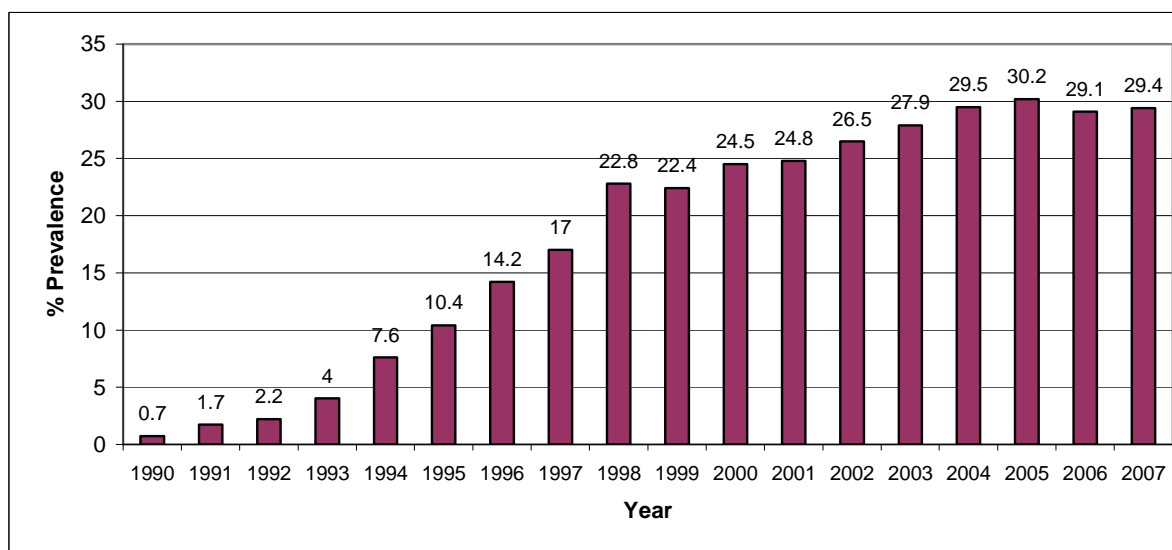


# ADDENDUM FOR PUBLISHED 2007 NATIONAL HIV AND SYPHILYS PREVALENCE SURVEY REPORT

## 1. National HIV prevalence



**Figure 1:** National HIV prevalence trends among antenatal clinic attendees in South Africa, 1990 - 2007

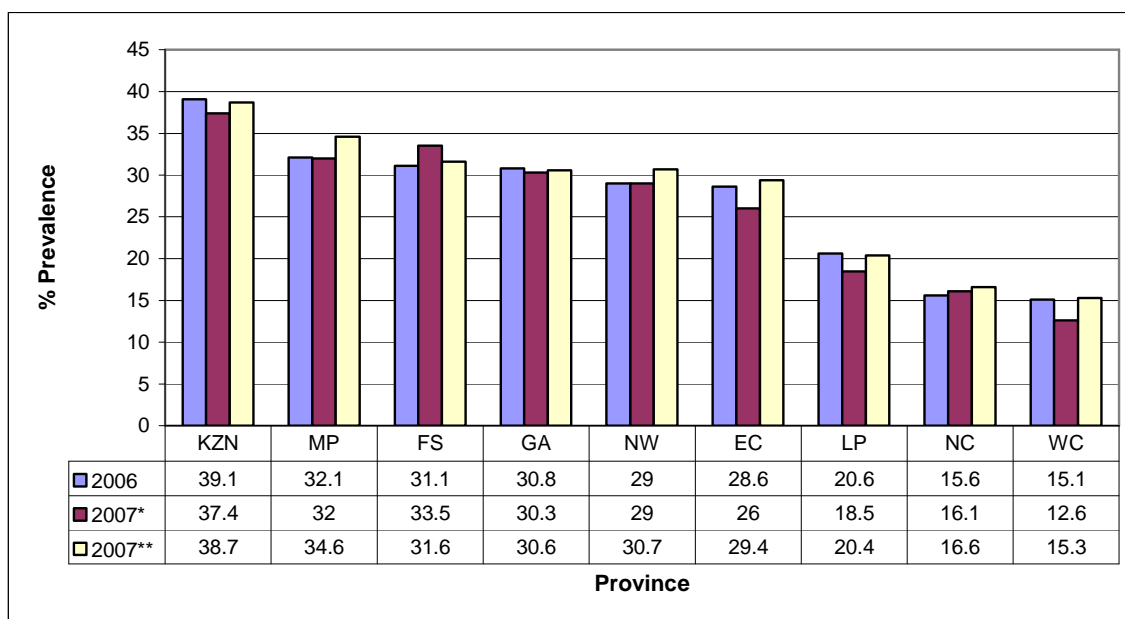
\*\* The age weight figure for HIV prevalence reported in the 2007 report is 28.0%

## 2. Provincial HIV prevalence

**Table 2:** Provincial HIV prevalence estimates: Antenatal clinic attendees in South Africa, 2005 – 2007

Province	2005	2006	2007	2007
	% Prev. (95% CI)	% Prev. (95% CI)	% Prev. (95% CI) age weight	% Prev. (95% CI) no age weight
Eastern Cape	29.5 (26.4 – 32.5)	28.6 (26.8 – 30.4)	26.0 (24.0 – 28.1)	29.4 (28.9 – 29.9)
Free State	30.3 (26.9 – 33.6)	31.1 (29.2 – 33.1)	33.5 (28.3 – 39.1)	31.6 (29.6 – 33.6)
Gauteng	32.4 (30.6 – 34.3)	30.8 (29.6 – 32.1)	30.3 (29.1 – 32.8)	30.6 (29.5 – 31.6)
KwaZulu-Natal	39.1 (36.8 – 41.4)	39.1 (37.5 – 40.7)	37.4 (35.0 – 39.8)	38.7 (37.6 – 39.9)
Limpopo	21.5 (18.5 – 24.6)	20.6 (18.9 – 22.3)	18.5 (16.7 – 20.4)	20.4 (19.2 – 21.7)
Mpumalanga	34.8 (31.0 – 38.5)	32.1 (29.8 – 34.4)	32.0 (29.2 – 34.9)	34.6 (32.7 – 36.6)
Northern Cape	18.5 (14.6 – 22.4)	15.6 (12.7 – 18.5)	16.1 (13.9 – 18.7)	16.6 (14.6 – 18.8)
North West	31.8 (28.4 – 35.2)	29.0 (26.9 – 31.1)	29.0 (24.8 – 33.5)	30.7 (28.9 – 32.6)
Western Cape	15.7 (11.3 – 20.1)	15.1 (11.6 – 18.7)	12.6 (10.1 – 15.6)	15.3 (14.2 – 16.5)
<b>National</b>	<b>30.2 (29.1 – 31.2)</b>	<b>29.1 (28.3 – 29.9)</b>	<b>28.0 (26.9 – 29.1)</b>	<b>29.4 (28.9 – 29.9)</b>

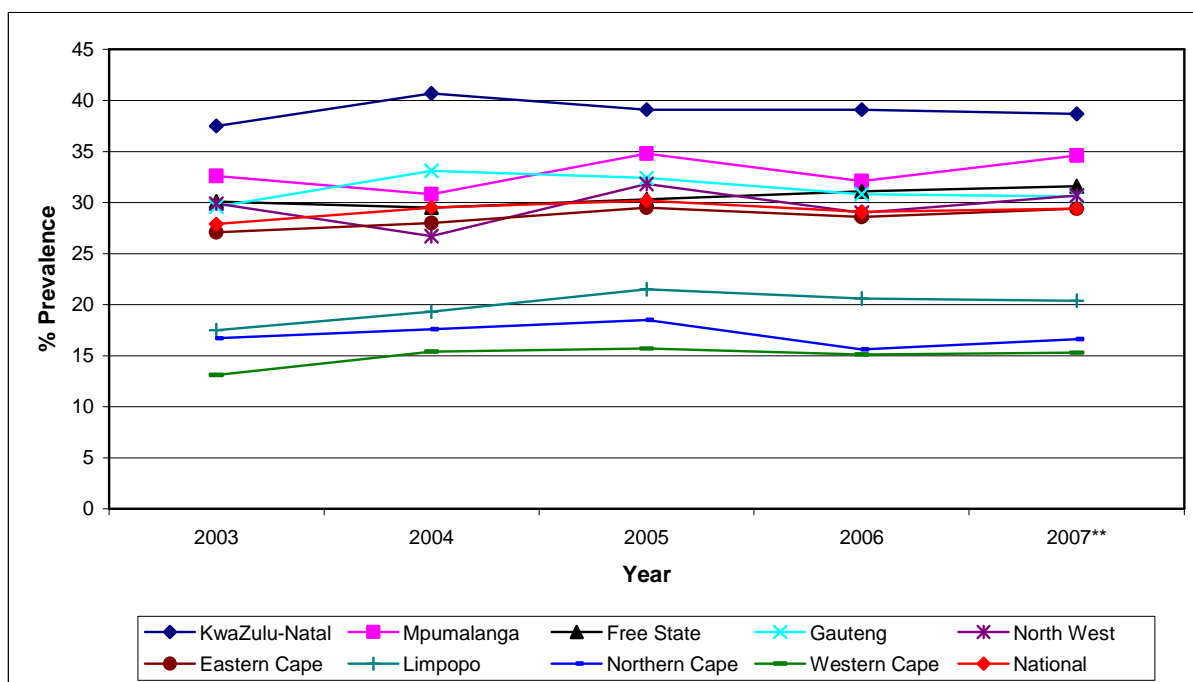
**N.B.** The 95% CI was used because statistically the true estimated value falls within the two confidence limits and therefore assures us that there is 95% certainty that the estimated value is not by chance.



**Figure 3:** HIV prevalence by province among antenatal clinic attendees in South Africa, 2006-2007

\* = Age weight

\*\* = No age weight



**Figure 5:** Provincial HIV prevalence among antenatal clinic attendees in South Africa, 2003 – 2007

\*\* 2007 figures: no age weight

### 3. HIV prevalence by district

**Table 3:** HIV prevalence estimates by district among antenatal clinic attendees, Eastern Cape, 2006 - 2007

District	2006	2007	2007
	% Prev. (95% CI)	% Prev. (95% CI) age weight	% Prev. (95% CI) no age weight
Alfred Nzo	25.1 (20.7 – 29.5)	21.8 (17.8 – 26.5)	24.9 (19.2 – 31.5)
Amatole	28.7 (26.0 – 31.5)	26.7 (22.5 – 31.3)	29.2 (26.5 – 32.0)
Cacadu	22.8 (17.7 – 28.0)	14.5 (9.23 – 22.3)	20.1 (15.7 – 25.3)
Chris Hani	27.1 (23.0 – 31.2)	26.3 (21.9 – 31.3)	30.2 (26.6 – 34.1)
Nelson Mandela Metro	31.9 (28.6 – 35.3)	27.9 (22.4 – 34.2)	29.0 (25.9 – 32.3)
O.R. Tambo	29.7 (26.8 – 32.6)	27.3 (27.5 – 33.2)	30.3 (27.6 – 33.2)
Ukhahlamba	27.9 (21.8 – 34.1)	29.5 (23.6 – 35.9)	29.5 (23.9 – 35.8)
<b>Eastern Cape Province</b>	<b>28.6 (26.8 – 30.4)</b>	<b>26.0 (24.0 – 28.1)</b>	<b>29.4 (28.9 – 29.9)</b>

*N.B.* The 95% CI was used because statistically the true estimated value falls within the two confidence limits and therefore assures us that there is 95% certainty that the estimated value is not by chance.

**Table 4:** HIV prevalence estimates by district among antenatal clinic attendees, Free State, 2006 - 2007

District	2006	2007	2007
		age weight	no age weight
Fezile Dabi	29.5 (24.9 – 34.1)	33.0 (28.2 – 38.1)	33.2 (28.5 – 38.3)
Lejweleputswa	34.1 (30.3 – 38.0)	37.0 (33.1 – 41.1)	37.0 (33.2 – 41.0)
Motheo	30.5 (26.8 – 34.3)	27.4 (23.8 – 31.3)	27.4 (23.9 – 31.3)
Thabo Mofutsanyane	32.2 (28.3 – 36.1)	30.7 (26.9 – 34.8)	30.7 (26.9 – 34.7)
Xhariep	19.7 (12.4 – 26.9)	24.0 (16.7 – 32.6)	24.0 (17.2 – 32.4)
<b>Free State Province</b>	<b>31.1 (29.2 – 33.1)</b>	<b>33.5 (28.3 – 39.1)</b>	<b>31.6 (29.6 – 33.6)</b>

*N.B.* The 95% CI was used because statistically the true estimated value falls within the two confidence limits and therefore assures us that there is 95% certainty that the estimated value is not by chance.

**Table 5:** HIV prevalence estimates by district among antenatal clinic attendees, Gauteng, 2006 - 2007

District	2006	2007	2007
	% Prev. (95% CI)	% Prev. (95% CI) age weight	% Prev. (95% CI) no age weight
City of Johannesburg	30.6 (28.8 – 32.5)	29.7 (27.9 – 31.5)	29.9 (28.2 – 31.7)
Ekurhuleni	32.3 (30.1 – 34.5)	33.4 (31.2 – 35.6)	33.4 (31.2 – 35.6)
Metsweding	***	32.9 (22.1 – 45.1)	32.9 (22.9 – 44.6)
Sedibeng	35.0 (30.2 – 39.7)	33.8 (30.0 – 37.8)	32.8 (29.0 – 37.0)
Tshwane	26.5 (24.0 – 29.0)	26.8 (24.6 – 29.1)	26.7 (24.5 – 29.0)
West Rand	34.6 (30.0 – 39.2)	32.4 (28.4 – 36.7)	32.4 (28.5 – 36.6)
<b>Gauteng Province</b>	<b>30.8 (29.6 – 32.1)</b>	<b>30.3 (29.1 – 32.8)</b>	<b>30.6 (29.5 – 31.6)</b>

\*\*\*. Metsweding Health District was the only district not sampled in 2006 due to demarcation processes in North-west province. It was transferred to Gauteng province in 2007.

*N.B. The 95% CI was used because statistically the true estimated value falls within the two confidence limits and therefore assures us that there is 95% certainty that the estimated value is not by chance.*

**Table 6:** HIV prevalence estimates by district among antenatal clinic attendees, KwaZulu-Natal, 2006 - 2007

District	2006	2007	2007
	% Prev. (95% CI)	% Prev. (95% CI) age weight	% Prev. (95% CI) no age weight
Amajuba	46.0 (41.1 – 50.9)	39.4 (34.6 – 44.3)	39.4 (34.7 – 44.21)
Sisonke	31.9 (25.8 – 37.9)	34.1 (29.1 – 39.6)	34.2 (29.2 – 39.5)
Ugu	38.9 (34.6 – 43.1)	37.3 (33.1 – 41.7)	37.3 (33.2 – 41.6)
Umkhanyakude	36.3 (31.7 – 41.0)	39.8 (35.0 - 44.8)	39.8 (35.2 – 44.6)
Umzinyathi	27.9 (23.0 – 32.8)	31.7 (26.8 – 37.0)	31.7 (26.9 – 36.8)
Uthukela	35.1 (30.7 – 39.4)	36.3 (31.0 – 40.9)	36.3 (32.0 – 40.8)
Uthungulu	34.6 (30.7 – 38.5)	36.0 (32.0 – 40.1)	36.0 (32.1 – 40.0)
Zululand	36.9 (33.0 – 40.9)	34.7 (30.8 – 38.7)	34.7 (30.9 – 38.6)
eThekwini	41.6 (39.5 – 43.6)	41.6 ( 39.6 – 43.7)	41.6 (39.6 – 43.7)
iLembe	39.1 (34.5 – 43.8)	41.5 (36.7 – 46.4)	41.5 (36.9 – 46.3)
uMgungundlovu	44.4 (40.7 – 48.1)	40.8 (37.1 – 44.6)	40.8 (37.2 – 44.5)
<b>KwaZulu-Natal Province</b>	<b>39.1 (37.5 – 40.7)</b>	<b>37.4 (35.0 – 39.8)</b>	<b>38.7 (37.6 – 39.9)</b>

*N.B. The 95% CI was used because statistically the true estimated value falls within the two confidence limits and therefore assures us that there is 95% certainty that the estimated value is not by chance.*

**Table 7:** HIV prevalence estimates by district among antenatal clinic attendees, Limpopo, 2006 - 2007

District	2006	2007	2007
	% Prev. (95% CI)	% Prev. (95% CI) age weight	% Prev. (95% CI) no age weight
Capricorn	24.2 (21.3 – 27.0)	19.8 (17.3 – 22.6)	19.8 (17.4 – 22.5)
Mopani	24.7 (21.6 – 27.9)	23.8 (20.6 – 27.3)	23.8 (20.7 – 27.2)
Sekhukhune	16.1 (13.5 – 18.6)	21.4 (18.6 – 24.5)	21.4 (18.6 – 24.4)
Vhembe	14.1 (11.9 – 16.4)	15.2 (13.0 – 17.7)	15.2 (13.0 – 17.7)
Waterberg	27.5 (23.7 – 31.3)	25.4 (21.6 – 29.6)	25.4 (21.7 – 29.5)
<b>Limpopo Province</b>	<b>20.6 (18.9 – 22.3)</b>	<b>18.5 (16.7 – 20.4)</b>	<b>20.4 (19.2 – 21.7)</b>

*N.B. The 95% CI was used because statistically the true estimated value falls within the two confidence limits and therefore assures us that there is 95% certainty that the estimated value is not by chance.*

**Table 8:** HIV prevalence estimates by district among antenatal clinic attendees, Mpumalanga, 2006 - 2007

District	2006	2007	2007
	% Prev. (95% CI)	% Prev. (95% CI) age weight	% Prev. (95% CI) no age weight
Ehlanzeni	31.9 (29.1 – 34.8)	36.1 (33.2 – 39.1)	36.1 (33.3 – 39.1)
Gert Sibande	38.9 (34.7 – 43.0)	40.6 (36.5 – 44.8)	40.6 (36.6 – 44.7)
Nkangala	26.8 (23.4 – 30.2)	27.6 (24.3 – 31.1)	27.6 (24.4 – 31.0)
<b>Mpumalanga Province</b>	<b>32.1 (29.8 – 34.4)</b>	<b>32.0 (29.2 – 34.9)</b>	<b>34.6 (32.7 – 36.6)</b>

*N.B. The 95% CI was used because statistically the true estimated value falls within the two confidence limits and therefore assures us that there is 95% certainty that the estimated value is not by chance.*

**Table 9:** HIV prevalence estimates by district among antenatal clinic attendees, Northern Cape, 2006 - 2007

District	2006	2007	2007
	% Prev. (95% CI)	% Prev. (95% CI) age weight	% Prev. (95% CI) no age weight
F Baard	22.7 (18.7 – 26.7)	22.4 (18.7 – 26.6)	22.4 (18.8 – 26.5)
Kgalagadi	18.4 (7.5 – 29.2)	17.2 (12.0 – 23.5)	17.3 (12.5 – 23.6)
Namakwa	5.3 (0.8 – 9.7)	7.3 (2.7 – 15.2)	7.3 (3.3 – 15.4)
Pixley Ka Seme	10.7 (6.9 – 14.5)	14.2 (10.0 – 19.4)	14.2 (10.3 – 19.3)
Siyanda	12.3 (8.4 – 16.2)	11.0 (7.5 – 15.5)	11.0 (7.7 - 15.5)
<b>Northern Cape Province</b>	<b>15.6 (12.7 – 18.5)</b>	<b>16.1 (13.9 – 18.7)</b>	<b>16.6 (14.6 – 18.8)</b>

*N.B.* The 95% CI was used because statistically the true estimated value falls within the two confidence limits and therefore assures us that there is 95% certainty that the estimated value is not by chance.

**Table 10:** HIV prevalence estimates by district among antenatal clinic attendees, North West, 2006 - 2007

District	2006	2007	2007
	% Prev. (95% CI)	% Prev. (95% CI) age weight	% Prev. (95% CI) no age weight
Bojanala	33.6 (30.9 – 36.3)	33.3 (30.3 – 36.5)	33.3 (30.3 – 36.5)
Dr. Ruth Sekgomotsi Mompoti	21.8 (18.2 – 25.5)	26.9 (22.4 – 31.9)	26.9 (22.6 – 31.7)
Ngaka Modiri Molema	23.6 (20.1 – 27.1)	27.0 (23.4 – 31.0)	27.0 (23.5 – 30.9)
Dr. Kenneth Kaunda	31.5 (27.4 – 35.6)	32.5 (28.6 – 36.6)	32.5 (28.7 – 36.5)
<b>North West Province</b>	<b>29.0 (26.9 – 31.1)</b>	<b>29.0 ( 4.8 – 33.5)</b>	<b>30.7 (28.9 – 32.6)</b>

*N.B.* The 95% CI was used because statistically the true estimated value falls within the two confidence limits and therefore assures us that there is 95% certainty that the estimated value is not by chance.

**Table 11:** HIV prevalence estimates by district among antenatal clinic attendees, Western Cape, 2006 - 2007

District	2006	2007	2007
		% Prev. (95% CI) age weight	% Prev. (95% CI) no age weight
Cape Winelands (Boland)	13.2 (10.4 – 16.1)	12.8 (10.1 – 16.1)	12.8 (10.2 – 16.0)
Central Karoo	8.3 (0.5 – 16.1)	23.6 (13.2 – 37.0)	23.6 (14.3 – 36.6)
Eden	11.5 (8.1 – 14.8)	13.1 (9.7 – 17.4)	13.1 (9.8 – 17.2)
Metropol	17.0 (15.5 – 18.4)	16.1 (14.7 – 17.5)	16.1 (14.7 – 17.5)
Overberg	13.0 (7.5 – 18.5)	19.4 (13.3 – 26.9)	19.4 (13.8 – 26.7)
West Coast	7.3 (4.0 – 10.7)	10.2 (6.4 – 15.2)	10.2 (6.7 – 15.1)
<b>Western Cape Province</b>	<b>15.1 (11.6 – 18.7)</b>	<b>12.6 (10.1 – 15.6)</b>	<b>15.3 (14.2 – 16.5)</b>

*N.B.* The 95% CI was used because statistically the true estimated value falls within the two confidence limits and therefore assures us that there is 95% certainty that the estimated value is not by chance.

**Table 12:** National HIV prevalence estimates by age group among antenatal clinic attendees, South Africa, 2005 – 2007

Age Group (Years)	2005 % Prev. (95% CI)	2006 % Prev. (95% CI)	2007 % Prev. (95% CI) age weight	2007 % Prev. (95% CI). no age weight
15 – 19	15.9 (14.6 – 17.2)	13.7 (12.8 – 14.6)	13.4 (12.3 – 14.0)	12.9 (12.1 – 13.8)
20 – 24	30.6 (29.0 – 32.2)	28.0 (26.9 – 29.1)	28.1 (27.2 – 28.9)	28.1 (27.3 – 29.0)
25 – 29	39.5 (37.7 – 41.3)	38.7 (37.3 – 40.2)	37.5 (36.5 – 38.6)	37.9 (36.8 – 39.0)
30 – 34	36.4 (34.3 – 38.5)	37.0 (35.5 – 38.5)	39.6 (38.3 – 41.0)	40.2 (38.8 – 41.6)
35 – 39	28.0 (25.2 – 30.8)	29.3 (27.7 – 31.5)	33.0 (31.3 – 34.8)	33.2 (31.4 – 35.0)
>40	19.8 (16.1 – 23.6)	21.3 (18.5 – 24.1)	22.1 (19.3 – 25.1)	21.5 (16.9 – 27.1)

**N.B.** The 95% CI was used because statistically the true estimated value falls within the two confidence limits and therefore assures us that there is 95% certainty that the estimated value is not by chance.