

Research Programme

Overview



"Strengthening health systems in southern Africa"
1992 - 2007



Main goal

- Conduct **relevant, focussed health research** as part of Health Systems Trust's integrated approach
 - aimed at building the **national health system**
 - by supporting and strengthening the implementation of **functional health districts**
 - in **South and southern Africa.**



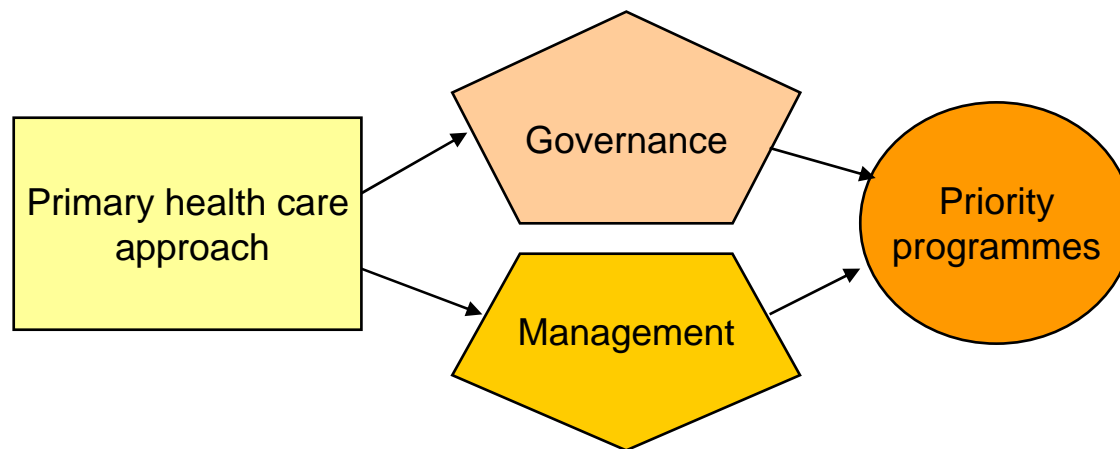
Special emphasis

- **Broadening role** within the SADC
- **Essential national health research**
- **Knowledge management**
- **Diversifying** the range of stakeholder, donor and other relationships.



Focus areas

- **Primary health care**
- **Governance**
- **Management systems**
- **Health Priority programmes**



Primary Health Care Approach

- **Equity** of access to affordable, appropriate, effective health services
- Inter-sectoral **collaboration**
- Community **participation** and community based care
- Social **development** & health



Governance

- **Provincial health research committees**
- **Community advisory boards**
- **Community health/clinic committees**
- **Hospital boards.**



Management Systems

- **Knowledge management & meta-analysis**
- **Human resource & capacity development**
- **Health facilities, infrastructure & services**
- **Health information technology & systems**
- **Health planning**
- **Best practice**
- **Monitoring and evaluation**

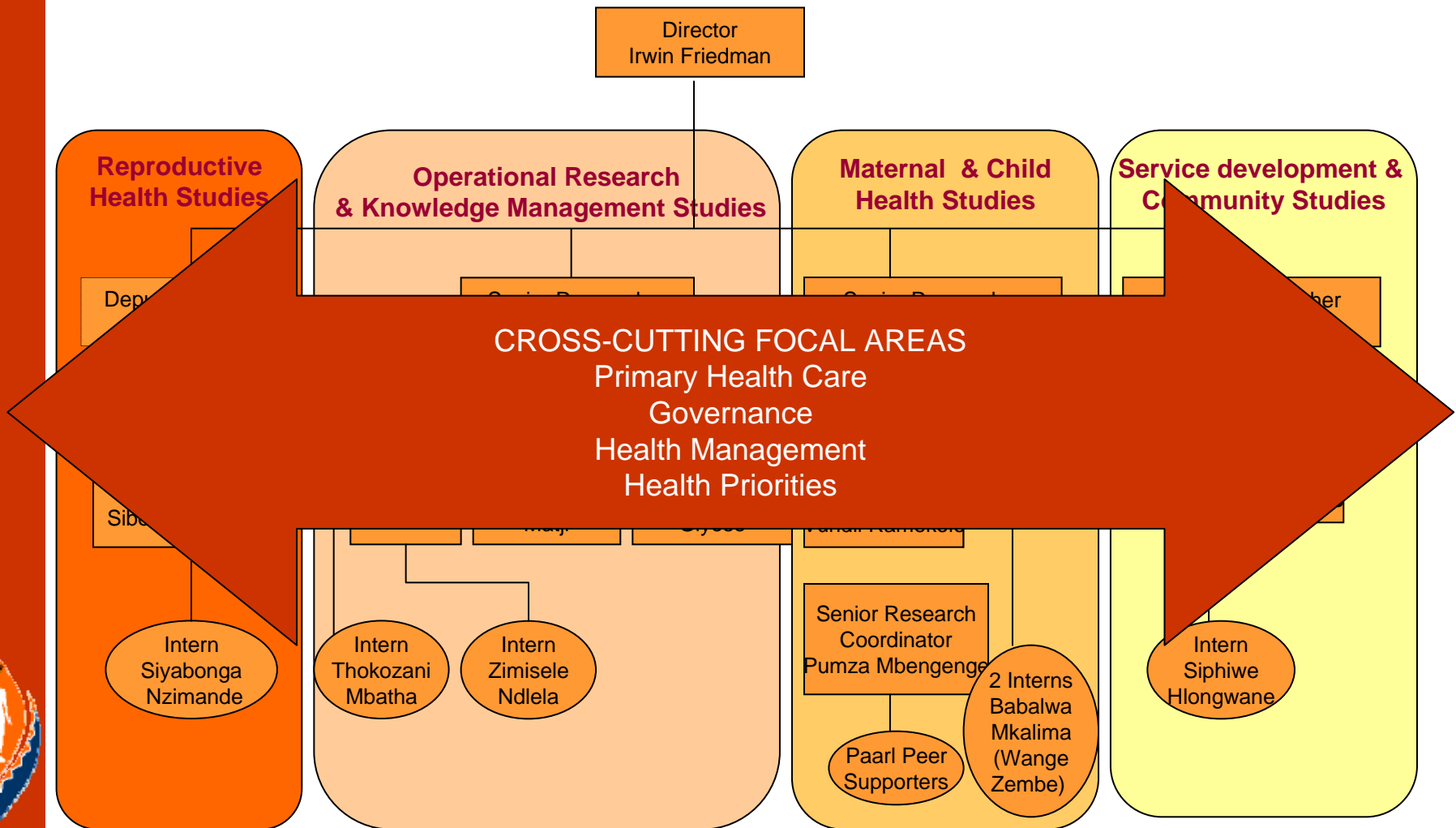


Priority programmes

- **HIV and AIDS**
- **Tuberculosis**
- **Sexual and reproductive health**
- **Child health**
- **Gender & health, women's health and the progressive role of men**
- **Nutrition**
- **Chronic disease treatment adherence**



Organogramme



Maternal and children's health

- **Goodstart Randomised Controlled Trial**
 - peer education on exclusive infant feeding by HIV+ve mothers on child health outcomes
 - versus encouraging access to child support grants
 - includes a variety of studies on PMTCT, peer-educator training on use of WHO training materials
 - facility based interventions
- **Mothers2mothers** programme evaluation



Reproductive health & rights

- **Formative evaluation of VCT**
 - changes following facilities improvements
- **Termination of Pregnancy Act**
 - progress with implementation
- **HIV treatment adherence**
 - barriers and enablers



Tuberculosis & chronic disease

- **National TB Control Programme**
 - TB Technical Assistance Support Contract (TASC)
 - M&E
 - technical support
 - operations research
 - TB leakages and improved case holding
 - Quality of MDR TB services
 - Evaluation of current TB patient support mechanisms
- Improving management of community-based chronic disease management



Health service assessments

- **National Health Facilities survey** preliminary assessment & full facilities and HR audit
- **Decentralisation** of Reproductive Health Services
- **Occupational health & compensation** mechanisms
- **Costing of TB services**
- **CHW surveillance**
- **Formative evaluation of Youth Mentoring**



Human resources & health information

- **Career choices** in regard to nursing
- **Evaluation of professional training** - Centre for Rural Health learning complex
- **Health Information System resource assessment**
- **Health management training needs assessment**



Governance

- **Provincial Health Research Committees**
- **National health research database**
- **Health priorities & research trends** (knowledge management)
- **Functioning of community health committees** and community advisory boards



Service development

- **EPWP (social sector)** - Getting Research into Policy & Practice
- **Millennium Development Goals** - measuring progress to achieving (focussed on MCH)
- **Role of social grants in improving MCH**
- **Impact of incentives**, nutrition and other interventions on TB outcomes
- **CHW - best practice**



For your 15 years of contribution

- Thank you - the CEOs, directors, staff, board members, donors and partners who made our work possible
 - Previous
 - Current



1996

- Essential National Health Research
- Allocation of funding to many institutions
- Developing ReMIS (Provincial baselines)
- Primary School Nutrition Programme
- Food fortification
- Health financing
- Encouraging new researchers
 - Research internships & conferences



1997

- Measuring the move towards equity
- District health reports
- Community health worker policy
- Reproductive health (15 grants)
 - Costs of implementing Termination of Pregnancy Act
- Intern development in health policy



1998

- National Health Facilities Survey
- Health sector financing
- Distribution of human resources
- Impact of private health care
- Situation analyses of district health
- Integration of PHC
- Mental health
- Reproductive health - control of STIs
- Child and maternal health



1999

- Rapid appraisal of community-based HIV / AIDS care and support services
- Strengthening private sector provision of services of public significance
- Partnerships (private, religious)
- Production of doctors
 - Community service for doctors study
- Proposal development workshop for young researchers



2000

- National PHC Facilities Survey
- Decentralisation of health services
- PMTCT initial pilot site evaluation
- loveLife partnership
- Global Equity Gauges
- Protecting Efficient Comprehensive Integrated Primary Health Care
- DISCA tool
- Evaluation of Adolescent Friendly Clinics



2001

- Situation analyses of drug management
- Mental health at district level
- Good practice in district TB care
- Integrated nutrition programme
- National STI initiative
- Evaluation of PMTCT, VCT pilots & male sexuality
- Mapping quality in HIV & AIDS services
- Rural health care evaluation



2002

- PMTCT cohort study
- HIV Impulse Study – care of children
- STI Initiative with public & private
- National Health Facilities Survey
- Decentralisation & Health study
- Evaluation of VCT services



2003

- PMTCT
 - Cohort & sub-studies
 - Capacity development
- Evaluation of home-based care
- Treatment Monitor – comprehensive HIV and AIDS care
- Assessing the impact of municipal services
- Impact of decentralisation on RH



2004

- Goodstart & PROMISE – infant feeding in relation to outcomes
- ARV behavioural study
- Technical Assistance Support Contract for Tuberculosis
- Barriers to the implementation of TOP
- Evaluation of Public/Private partnerships for health in Transport sector



2005

- Leakages from the TB Programme
- Best practice in CHW programmes
- Overcoming obstacles of the Expanded Public Works Programme (Social Sector cluster)
- Evaluation of the Centre of Rural Health learning complex
- Priority setting for health research
- Capacity building for health research



Acknowledgements

- Department of Health
- University Research Corporation
- Medical Sciences for Health
- Medical Research Council of SA
- University of Western Cape
- Population Council (Horizons)
- University of Leeds
- Atlantic Philanthropies
- Centres for Disease Control
- USAID
- European Commission
- and many others



Thank you all

