

Gauteng Province

Frank Tlamama and Elliot Sello



Gauteng province remains the most densely populated of all provinces and contains over 20% of the total population of South Africa: close on 10 million people. It is socio-economically strong and almost all households (97.9%) have access to piped water. Approximately 20% of the population have access to a medical aid scheme, the 2nd highest in the country.

The per capita expenditure on PHC in the province increased from R303 in 2006/07 to R312 in 2007/08, just above the national average of R302. Only 23% of the total district budget was spent on district hospitals compared to the national average of 42.7%. The cost per PDE for district hospitals remains the 2nd highest in the country, after the Northern Cape. The increasing trend in PHC utilisation rate in the province was interrupted by a decrease to 1.7 visits per person, per year, in 2007/08, ranked it the lowest in the country and was probably influenced by the fact that the province has the highest number of private facilities and beds.

The clinical workload of nurses remained static over the past two years and was 25.6 patients per day in 2007/08, above the national average of 23.7 patients per nurse, per day. The clinic supervision rate improved from 52.0% in 2006/07 to 58.2% in 2007/08 but remains inadequate for the improvement of the quality of PHC.

The TB cure rate improved steadily from 61.3% in 2003 to 71.1% in 2006, the 2nd highest among the provinces; all the districts in Gauteng achieved cure rates well over the SA average. There was a corresponding steady increase in smear conversion rate from 53.6% in 2003 to 75.1% in 2007. The challenge for this province, now, is to get both indicators to over 85% – in order to be in line with WHO targets.

The HIV testing rate of pregnant mothers increased from 61.1% in 2006/07 to 73.3% in 2007/08. However, Metsweding district at 49.9% is the only district in the country that did not achieve a testing rate of more than 60%. Findings from the province suggest a need for districts in the province to improve the reporting of the ANC first visit data element in DHIS. The nevirapine uptake rate of HIV positive mothers improved to 86.2% but the uptake in newborns fluctuated in the last five years, making interpretation difficult. This important

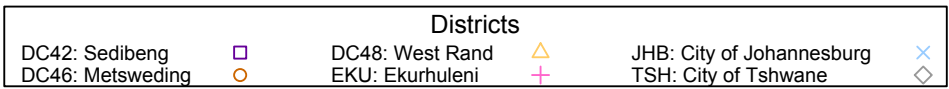
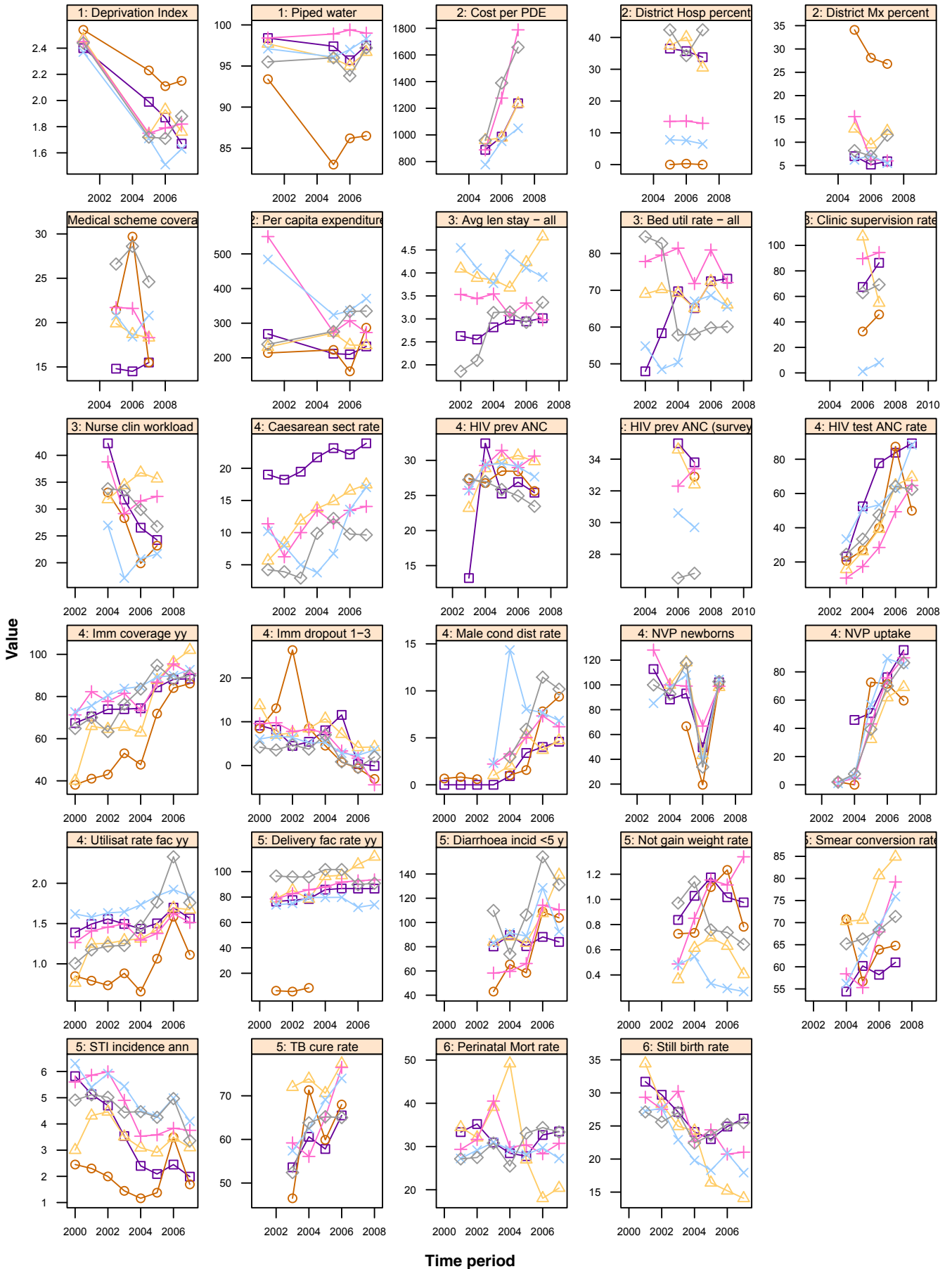
HIV prevention programme needs greater attention and prioritisation. There is also a need for improved monitoring and evaluation of the PMTCT data by managers at all levels of the system.

The condom distribution rate decreased to 7.1 condoms per man, per year, in 2007/08, which is inadequate for a HIV preventive activity. The incidence of new STIs decreased from 4.3% in 2006/07 to 3.5% in 2007/08.

The delivery rate in facility increased from 82.9% in 2006/07 to 84.3% in 2007/08. The Caesarean section rate also increased from 13.6% to 14.1% during the same period. The stillbirth rate and perinatal mortality rate declined slightly to 20.9 and 29.7 per 1000 births respectively, and are both still below the respective national averages for 2007/08.

Immunisation coverage improved marginally to 91.6% in 2007/08 and the immunisation drop out rate decreased from 1.4% in 2006/07 to 0.7% in 2007/08 – the lowest in the country. The hospital indicators showed that bed utilisation decreased from 66.0% in 2006/07 to 64.5% in 2007/08, which is below the national average of 65.3%, and the average length of stay increased marginally from 3.2 days to 3.4 days.

Annual indicators for districts in Gauteng (GP)



Section B: District and Province Profiles

Gauteng Province		Year					District Rank (1=best) most recent	National value most recent
		2003/04	2004/05	2005/06	2006/07	2007/08		
Demographic and socio-economic	Population total			9 597 647	9 796 324	9 949 370		47 844 347
	Medical aid coverage (%)			21.7	21.2	20.2	-	14.3
	Access to piped water (%) - (2005-06 GHS, 2007 Comm. Survey)			96.9	96.7	97.9	-	85.8
	Deprivation index - (high value = most deprived)			-	-	-	-	
	Socio-economic quintile - (1=poor, 5=best)			-	-	-	-	
Input	Non-hospital PHC expenditure per capita - (real 2007/08 prices)			283	303	312	-	302
	% District health services expenditure on District Management			9.5	7.2	8.3		5.1
	% District health services expenditure on District Hospitals			24.5	21.8	23.0		42.7
	Cost per PDE			902	1 181	1 476		1128
Process	Nurse clinical workload		32.0	23.9	25.9	25.6	-	23.7
	Average length of stay (ALOS)	2.8	3.2	3.3	3.2	3.4	-	4.4
	Bed utilisation rate (BUR)	64.8	62.2	62.4	66.0	64.5	-	65.3
	Clinic supervision rate	-	-	-	52.0	58.2	-	48.2
Output	Male condom distribution rate	1.5	6.6	6.0	7.8	7.1	-	11.8
	Immunisation coverage < 1 year	79.2	78.6	88.9	91.1	91.6	-	84.2
	Immunisation drop out rate (DTP1-3)	6.1	6.7	3.5	1.4	0.7	-	3.4
	Caesarean section rate	10.3	12.8	14.4	13.6	14.1		15.6
	Proportion ANC clients tested for HIV	23.2	35.5	44.8	61.1	73.3	-	79.6
	HIV prevalence among ANC clients tested (DHIS)	24.5	29.3	28.7	28.0	27.5	-	24.4
	HIV prevalence among ANC clients tested (survey)	-	-	-	30.8 (29.6-32.1)	30.3 (29.1-32.8)	-	28.3
	Nevirapine uptake rate among newborn babies of HIV+ve women	98.8	91.7	105.7	46.3	101.6	-	102.3
	Nevirapine uptake rate among pregnant HIV+ve women	1.2	11.6	48.7	78.6	86.2	-	76.1
Utilisation rate	1.5	1.5	1.6	1.9	1.7	-	2.2	
Outcome	Incidence of STI treated - new	4.7	3.9	3.7	4.3	3.5	-	4.4
	TB cure rate (2004 - 2006)	61.3	62.6	66.7	71.1		-	62.7
	TB smear conversion rate (2004 - 2007)	53.6	57.8	62.2	69.2	75.1	-	60.5
	TB case load (new Sm+)	-	-	-	-	18 208		135 604
	Diarrhoea incidence under 5 years	79.2	78.4	84.3	124.9	107.4	-	254.0
	Not gaining weight under 5 years rate	0.6	0.8	0.7	0.7	0.7	-	1.3
	Delivery rate in facility	82.3	86.2	87.3	82.9	84.3	-	80.6
Impact	Stillbirth rate	26.4	21.9	21.5	21.8	20.9	-	23.0
	Perinatal mortality rate in facility	34.2	29.7	29.8	29.8	29.7	-	31.1

Number of health facilities and beds	Clinic	CHCs	Mobile Service	District Hospital	Regional Hospital	Provincial Tertiary Hospital	Central Hospital	Specialised Hospital	Private Hospitals	Beds
Public sector facilities (2007) and beds (2005)	307	33	50	9	12	0	4	10		15 317
Private sector facilities and beds (2008)									82	13 454

Gauteng



The City of Johannesburg has the most people of any district in SA and is also the most densely populated. It falls within the top 20% of districts in terms of socio-economic development and almost all households, (98.3%) have access to piped water. Some 20.8% of the population have access to a medical aid scheme.

The nurse clinical workload increased from 17.2 patients per nurse, per day, in 2005/06

to 21.7 in 2007/08, but was still below the national average of 23.7 patients per nurse, per day. The PHC utilisation rate decreased slightly to 1.8 visits per person in 2007/08, after a four year steady increase between 2003/04 and 2006/07.

The data reflecting the clinic supervision rate of 8.1% in 2007/08 is incorrect and is an indictment of the monitoring and evaluation by management at all levels that this should have been forwarded to national level. Both the bed utilisation rate and average length of stay in district hospitals decreased to 65.5% and 3.9 days, respectively.

The TB cure rate improved over the past four years to 74.0% in 2006 and the smear conversion rate improved to 75.5% in 2007. These improvements are encouraging, considering the fact that the metro had the highest new smear +ve TB case load of 7 490 cases in the province, this being the 3rd highest in the country.

JHB City of Johannesburg

The proportion of antenatal clients tested for HIV increased from 62.9% in 2006/07 to 88.4% in 2007/08. The nevirapine uptake data of HIV+ve mothers and that of their babies has fluctuated, making interpretation difficult.

There was an improvement in the incidence of new STIs treated, to 4.1% in 2007/08, although there was a decline in the condom distribution rate to 6.8 per male, per year, in 2007/08.

The facility delivery rate in Johannesburg increased by two percentage points and, at 73.9%, is the lowest among the metros. The Caesarean section rate increased to 17%. The stillbirth and perinatal mortality rates improved to 17.9 and 27.2 per 1000 births respectively, relatively low when compared to the rest of the country. Immunisation results have continued to improve since 2003/04, and in 2007/08 the metro achieved 92.7% coverage, but the drop out rate increased to 3.6% in 2007/08.

JHB City of Johannesburg Metropolitan Municipality		Year					District Rank (1=best)	National value
		2003/04	2004/05	2005/06	2006/07	2007/08	(1=best)	most recent
Demographic and socio-economic	Population total			3 176 946	3 240 413	3 288 132		47 844 347
	Medical aid coverage (%)			20.8	18.4	20.8	8	14.3
	Access to piped water (%) - (2005-06 GHS, 2007 Comm. Survey)			96.1	97.0	98.3	7	85.8
	Deprivation index - (high value = most deprived)			1.71	1.51	1.63	11	
	Socio-economic quintile - (1=poor, 5=best)			5	5	5		
Input	Non-hospital PHC expenditure per capita - (real 2007/08 prices)			324	336	371	10	302
	% District health services expenditure on District Management			6.2	7.2	5.5		5.1
	% District health services expenditure on District Hospitals			7.8	7.6	6.5		42.7
	Cost per PDE			777	952	1 050		1128
Process	Nurse clinical workload		26.9	17.2	20.7	21.7	32	23.7
	Average length of stay (ALOS)	4.1	3.8	4.4	4.1	3.9	24	4.4
	Bed utilisation rate (BUR)	48.5	50.4	67.0	68.6	65.5	27	65.3
	Clinic supervision rate	-	-	-	1.2	8.1	51	48.2
Output	Male condom distribution rate	2.3	14.3	8.0	7.7	6.8	35	11.8
	Immunisation coverage < 1 year	83.8	84.7	89.3	89.9	92.7	11	84.2
	Immunisation drop out rate (DTP1-3)	5.1	5.3	2.8	2.4	3.6	28	3.4
	Caesarean section rate	5.0	3.8	6.7	13.6	17.0		15.6
	Proportion ANC clients tested for HIV	33.4	51.0	53.4	62.9	88.4	23	79.6
	HIV prevalence among ANC clients tested (DHIS)	25.7	29.4	29.6	29.1	27.7	39	24.4
	HIV prevalence among ANC clients tested (survey)	-	-	-	30.6 (28.8-32.5)	29.7 (27.9-31.5)	30	28.3
	Nevirapine uptake rate among newborn babies of HIV+ve women	85.2	97.8	108.1	39.3	104.3	9	102.3
	Nevirapine uptake rate among pregnant HIV+ve women	1.0	6.9	56.8	89.4	85.4	15	76.1
Utilisation rate	1.6	1.7	1.8	1.9	1.8	39	2.2	
Outcome	Incidence of STI treated - new	5.4	4.5	4.3	5.0	4.1	30	4.4
	TB cure rate (2004 - 2006)	57.4	62.5	69.1	74.0		10	62.7
	TB smear conversion rate (2004 - 2007)	51.5	56.2	63.3	69.4	75.9	8	60.5
	TB case load (new Sm+)	-	-	-	-	7 490		135 604
	Diarrhoea incidence under 5 years	83.1	91.4	88.8	128.6	92.5	2	254.0
	Not gaining weight under 5 years rate	0.5	0.5	0.3	0.3	0.3	1	1.3
	Delivery rate in facility	79.7	79.7	79.8	71.9	73.9	35	80.6
Impact	Stillbirth rate	22.9	19.8	18.3	20.9	17.9	7	23.0
	Perinatal mortality rate in facility	30.9	29.3	28.2	29.7	27.2	14	31.1

Number of health facilities and beds	Clinic	CHCs	Mobile Service	District Hospital	Regional Hospital	Provincial Tertiary Hospital	Central Hospital	Specialised Hospital	Private Hospitals	Beds
Public sector facilities (2007) and beds (2005)	107	9	15	1	3	0	2	4		5 108
Private sector facilities and beds (2008)									29	5 540

Gauteng



Tshwane metro has a population of over two million people, with most households (97.2%) having access to piped water. The district contains 25 private hospitals which provide almost the same number of beds as does the public sector. The medical aid coverage in the district was 24.6% in 2007.

TSH City of Tshwane Metropolitan Municipality

The per capita expenditure on PHC remained static at R335 per person, per year, in 2007/08 – the 2nd highest in Gauteng.

The average number of visits per person to a PHC facility declined to 1.8 in 2007/08. The clinical workload of nurses decreased in the last four years from 33.8 to 26.7 patients a day. The clinic supervision rate improved to 69.2% – the 6th highest in the country. The cost per PDE for district hospitals was R1658 in 2007/08 – the 5th highest in the country for two years running. Both the average length of stay and the bed utilisation rate increased to 3.4 days and 60.1%, respectively.

The TB cure rate remained static at around 65% in 2006, while the TB smear conversion rate improved to 71.4% in 2007. Much more needs to be done to improve the TB control programme. The proportion of women tested for HIV declined to 62.4% in

2007/08, far below the national average of 79.6%. The nevirapine uptake rate of HIV positive mothers improved to 86.5% in 2007/08 but the data regarding nevirapine uptake in newborns have fluctuated, making interpretation difficult. Much more needs to be done to improve the PMTCT programme in this district. The incidence of STIs declined to 3.4% in 2007/08, despite a slight decrease in condom distribution rate to 10.2 condoms per male, per year.

The delivery rate in facilities improved marginally to 90.8% in 2007/08, while there was a small decrease in the Caesarean section rate to 9.6%. The immunisation coverage increased marginally to 90% and the immunisation drop out rate was 2.0% in 2007/08. The stillbirth rate remained fairly constant, at around 25 per 1000 births respectively, as did the perinatal mortality rate of 33.4 per 1000 births.

TSH Tshwane Metropolitan Municipality		Year					District Rank (1=best)	National value
		2003/04	2004/05	2005/06	2006/07	2007/08	most recent	most recent
Demographic and socio-economic	Population total			2 052 935	2 101 120	2 140 964		47 844 347
	Medical aid coverage (%)			26.6	28.6	24.6	4	14.3
	Access to piped water (%) - (2005-06 GHS, 2007 Comm. Survey)			96.0	93.8	97.2	13	85.8
	Deprivation index - (high value = most deprived)			1.72	1.71	1.88	19	
	Socio-economic quintile - (1=poor, 5=best)			5	4	4		
Input	Non-hospital PHC expenditure per capita - (real 2007/08 prices)			276	334	335	18	302
	% District health services expenditure on District Management			8.2	7.0	11.5		5.1
	% District health services expenditure on District Hospitals			42.4	34.3	42.4		42.7
	Cost per PDE			959	1 390	1 658		1128
Process	Nurse clinical workload		33.8	33.5	29.9	26.7	18	23.7
	Average length of stay (ALOS)	2.1	3.1	3.1	2.9	3.4	18	4.4
	Bed utilisation rate (BUR)	82.7	57.8	58.1	59.8	60.1	37	65.3
	Clinic supervision rate	-	-	-	62.9	69.2	6	48.2
Output	Male condom distribution rate	0.0	3.0	5.9	11.5	10.2	16	11.8
	Immunisation coverage < 1 year	76.3	83.5	94.8	88.2	90.0	16	84.2
	Immunisation drop out rate (DTP1-3)	3.7	7.0	0.8	-0.5	2.0	19	3.4
	Caesarean section rate	2.9	9.9	12.2	9.8	9.6		15.6
	Proportion ANC clients tested for HIV	24.5	33.4	47.4	64.2	62.4	49	79.6
	HIV prevalence among ANC clients tested (DHIS)	27.2	27.0	25.9	24.9	23.5	28	24.4
	HIV prevalence among ANC clients tested (survey)	-	-	-	26.5 (24.0-29.0)	26.8 (24.6-29.1)	22	28.3
	Nevirapine uptake rate among newborn babies of HIV+ve women	100.0	92.7	117.7	33.8	102.6	12	102.3
	Nevirapine uptake rate among pregnant HIV+ve women	2.0	7.7	39.3	70.0	86.5	14	76.1
Utilisation rate	1.2	1.5	1.8	2.3	1.8	42	2.2	
Outcome	Incidence of STI treated - new	4.4	4.5	4.3	5.0	3.4	19	4.4
	TB cure rate (2004 - 2006)	52.4	63.8	65.2	65.0		28	62.7
	TB smear conversion rate (2004 - 2007)	44.4	65.2	66.3	68.3	71.4	11	60.5
	TB case load (new Sm+)	-	-	-	-	2 556		135 604
	Diarrhoea incidence under 5 years	109.8	73.9	106.2	154.2	131.2	8	254.0
	Not gaining weight under 5 years rate	1.0	1.1	0.8	0.7	0.6	6	1.3
	Delivery rate in facility	95.8	101.7	101.6	89.8	90.8	8	80.6
Impact	Stillbirth rate	27.0	22.4	23.6	25.2	25.5	37	23.0
	Perinatal mortality rate in facility	30.8	25.5	33.1	34.4	33.4	35	31.1

Number of health facilities and beds	Clinic	CHCs	Mobile Service	District Hospital	Regional Hospital	Provincial Tertiary Hospital	Central Hospital	Specialised Hospital	Private Hospitals	Beds
Public sector facilities (2007) and beds (2005)	55	7	8	4	2	0	2	3		4 542
Private sector facilities and beds (2008)									25	4 109

Gauteng

EKU Ekurhuleni Metropolitan Municipality



Ekurhuleni district has a large urban population of over 2.5 million people and has the 2nd highest population density in South Africa. The population is fairly well-off, with 99% of households having access to piped water and 18.3% of the population having access to a medical aid scheme in 2007.

There are 16 private hospitals providing nearly as many beds as does the public sector. Although the PHC utilisation rate was

stable, at a rate of 1.5 visits per person in 2007/08, it is the 3rd lowest in the country.

PHC expenditure decreased by R34 to R273 per person in 2007/08. The cost per PDE for district hospitals increased significantly to R1788, the 2nd highest in the country. The nurse clinical workload increased to 32.3 patients per nurse, per day, and remains well above the national average of 23.7 patients per nurse, per day. The clinic supervision rate of 94.4%, the highest in SA, means that almost all the clinics received regular supervision in 2007/08, and this is encouraging.

Ekurhuleni's TB cure rate improved from 56.1% in 2004 to 76.5% in 2006, and there was a large improvement in the TB smear conversion rate to 79.2% in 2007. The challenge now is to get both indicators to over 85% and in line with WHO targets.

The proportion of ANC clients tested for HIV improved from 49.3% in 2006/07 to 64.7%,

but this rate is far below the national average of 79.6%. The nevirapine uptake data has fluctuated and this makes interpretation difficult.

The condom distribution rate dropped to 6.2 condoms per man, per year, in 2007/08 and this rate is almost half the national average of 11.8. Much more can be done to improve this important HIV prevention activity. The immunisation coverage decreased to 90.9%, and the negative drop out rate, -4.4%, is possibly due to migration from neighbouring districts into the district. The stillbirth and perinatal mortality rates increased in 2007/08 to 21 and 24 deaths per 1000 births respectively, although overall there has been a decline of nearly nine percentage points in the stillbirth rate since 2001/02. The delivery rate in facilities steadily improved from 85.8% in 2003/04 to 93.5% in 2007/08, the 5th highest in the country, while the Caesarean section rate increased to 14.1%

EKU Ekurhuleni Metropolitan Municipality		2003/04	2004/05	2005/06	2006/07	2007/08	District Rank (1=best) most recent	National value most recent
Demographic and socio-economic	Population total			2 476 129	2 532 767	2 577 446		47 844 347
	Medical aid coverage (%)			21.7	21.6	18.3	10	14.3
	Access to piped water (%) - (2005-06 GHS, 2007 Comm. Survey)			98.9	99.4	99.0	2	85.8
	Deprivation index - (high value = most deprived)			1.75	1.79	1.82	17	
	Socio-economic quintile - (1=poor, 5=best)			5	4	4		
Input	Non-hospital PHC expenditure per capita - (real 2007/08 prices)			274	307	273	34	302
	% District health services expenditure on District Management			15.5	6.3	6.0		5.1
	% District health services expenditure on District Hospitals			13.6	13.7	13.0		42.7
	Cost per PDE			887	1 276	1 788		1128
Process	Nurse clinical workload		38.8	29.1	31.5	32.3	13	23.7
	Average length of stay (ALOS)	3.4	3.5	3.1	3.3	3.0	12	4.4
	Bed utilisation rate (BUR)	79.6	81.5	71.8	81.0	72.1	13	65.3
	Clinic supervision rate	-	-	-	89.6	94.4	1	48.2
Output	Male condom distribution rate	2.2	3.3	5.0	7.3	6.2	38	11.8
	Immunisation coverage < 1 year	81.5	73.4	86.8	95.4	90.9	13	84.2
	Immunisation drop out rate (DTP1-3)	8.2	7.5	3.3	1.7	-4.4	1	3.4
	Caesarean section rate	10.0	13.5	11.6	13.5	14.1		15.6
	Proportion ANC clients tested for HIV	10.6	17.4	28.5	49.3	64.7	48	79.6
	HIV prevalence among ANC clients tested (DHIS)	25.9	29.3	31.4	29.0	30.6	44	24.4
	HIV prevalence among ANC clients tested (survey)	-	-	-	32.3 (30.1-34.5)	33.4 (31.2-35.6)	38	28.3
	Nevirapine uptake rate among newborn babies of HIV+ve women	128.1	100.0	99.1	66.8	98.9	32	102.3
	Nevirapine uptake rate among pregnant HIV+ve women	1.8	4.6	43.2	75.7	90.0	12	76.1
Utilisation rate	1.5	1.3	1.4	1.6	1.5	50	2.2	
Outcome	Incidence of STI treated - new	4.9	3.5	3.6	3.8	3.8	25	4.4
	TB cure rate (2004 - 2006)	59.2	56.1	65.1	76.5		6	62.7
	TB smear conversion rate (2004 - 2007)	62.2	58.4	55.3	67.9	79.2	5	60.5
	TB case load (new Sm+)	-	-	-	-	4 295		135 604
	Diarrhoea incidence under 5 years	58.3	59.7	66.1	114.2	110.4	6	254.0
	Not gaining weight under 5 years rate	0.5	0.8	1.2	1.1	1.3	25	1.3
Impact	Delivery rate in facility	85.8	87.8	91.8	92.8	93.5	5	80.6
	Stillbirth rate	30.2	22.7	24.4	20.7	21.0	17	23.0
	Perinatal mortality rate in facility	40.5	29.8	30.4	28.3	30.7	24	31.1

Number of health facilities and beds	Clinic	CHCs	Mobile Service	District Hospital	Regional Hospital	Provincial Tertiary Hospital	Central Hospital	Specialised Hospital	Private Hospitals	Beds
Public sector facilities (2007) and beds (2005)	78	9	7	1	5	0	0	1		2 812
Private sector facilities and beds (2008)									16	2 410

Gauteng



Metsweding has a population of just over 200 000 people with 86.5% of households having access to piped water and above average socio-economic development. The medical aid coverage has varied a lot, probably due to the small population size; it was on average 22% between 2005/06 and 2007/08. It is the only district without a district hospital in SA and so some services are possibly being provided by the neighbouring City of Tshwane Health District. It has only one community health centre, nine

DC46 Metsweding District Municipality

clinics, three mobile services, a rehabilitation hospital and one small private hospital.

The PHC expenditure increased by R126 per capita to R287 in 2007/08 but is still below the national average of R302. However, since a substantial part of Metsweding's expenditure was allocated from combined expenditure for the Tshwane / Metsweding area, these figures should be viewed with caution.

The PHC utilisation rate decreased from 1.6 visits per person in 2006/07 to 1.1 visits in 2007/08, the lowest rate in the country. This is probably due to inadequacies in the data management. The nurse clinical workload increased to 23.2 patients per nurse per day, just below the national average of 23.7 patients per nurse. As in the past two years, a high proportion, 26.8%, of the total district budget was spent on management in 2007/08, the highest management costs in SA. The clinic supervision rate increased to 45.8% but still, this means that more than

half of the clinics did not receive regular supervision.

The TB cure rate increased to 68% in 2006 and there was a corresponding small improvement in the smear conversion rate to 64.8% in 2007. The proportion of pregnant women who were tested for HIV decreased significantly to 49.9%, but poor data quality over the past two years makes it difficult to determine the true rate. The nevirapine uptake data for HIV+ve pregnant women and their babies fluctuated significantly and cannot be interpreted.

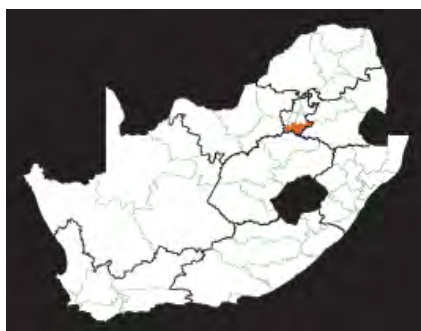
The distribution of condoms increased to 9.4 condoms per man, per year, in 2007/08 and this was accompanied by a significant decline in the incidence of new STIs treated, from 3.5% in 2006/07 to 1.7% in 2007/08. The immunisation coverage rate improved slightly from 84% in 2006/07 to 86.1% in 2007/08.

DC46 Metsweding District Municipality		Year					District Rank (1=best)	National value
		2003/04	2004/05	2005/06	2006/07	2007/08	most recent	most recent
Demographic and socio-economic	Population total			202 419	208 264	212 819		47 844 347
	Medical aid coverage (%)			21.4	29.7	15.5	16	14.3
	Access to piped water (%) - (2005-06 GHS, 2007 Comm. Survey)			83.0	86.2	86.5	36	85.8
	Deprivation index - (high value = most deprived)			2.23	2.11	2.15	23	
	Socio-economic quintile - (1=poor, 5=best)			4	4	3		
Input	Non-hospital PHC expenditure per capita - (real 2007/08 prices)			223	161	287	28	302
	% District health services expenditure on District Management			34.1	28.1	26.8		5.1
	% District health services expenditure on District Hospitals			0.0	0.3	0.0		42.7
	Cost per PDE			0	0	0		1128
Process	Nurse clinical workload		33.1	28.3	19.9	23.2	26	23.7
	Average length of stay (ALOS)	-	-	-	-	-	-	4.4
	Bed utilisation rate (BUR)	-	-	-	-	-	-	65.3
	Clinic supervision rate	-	-	-	32.5	45.8	29	48.2
Output	Male condom distribution rate	0.0	1.0	1.6	7.8	9.4	19	11.8
	Immunisation coverage < 1 year	53.1	47.7	71.9	84.0	86.1	22	84.2
	Immunisation drop out rate (DTP1-3)	8.5	4.5	0.8	-0.6	-3.1	4	3.4
	Caesarean section rate	-	-	-	-	-		15.6
	Proportion ANC clients tested for HIV	20.7	26.9	39.9	87.4	49.9	52	79.6
	HIV prevalence among ANC clients tested (DHIS)	27.4	26.8	28.5	28.4	25.6	33	24.4
	HIV prevalence among ANC clients tested (survey)	-	-	-	- (-)	32.9 (22.1-45.1)	35	28.3
	Nevirapine uptake rate among newborn babies of HIV+ve women	-	-	66.7	19.4	100.0	21	102.3
	Nevirapine uptake rate among pregnant HIV+ve women	2.1	0.0	72.6	71.6	59.7	38	76.1
Utilisation rate	0.9	0.7	1.1	1.6	1.1	52	2.2	
Outcome	Incidence of STI treated - new	1.4	1.2	1.4	3.5	1.7	2	4.4
	TB cure rate (2004 - 2006)	46.5	71.3	59.9	68.0		20	62.7
	TB smear conversion rate (2004 - 2007)	35.7	70.8	56.7	63.9	64.8	18	60.5
	TB case load (new Sm+)	-	-	-	-	215		135 604
	Diarrhoea incidence under 5 years	43.0	65.4	58.4	108.8	103.8	4	254.0
	Not gaining weight under 5 years rate	0.7	0.7	1.1	1.2	0.8	12	1.3
	Delivery rate in facility	8.5	0.0	0.0	0.0	0.0	52	80.6
Impact	Stillbirth rate	0.0	0.0	0.0	-	-	-	23.0
	Perinatal mortality rate in facility	0.0	0.0	0.0	-	-	-	31.1

Number of health facilities and beds	Clinic	CHCs	Mobile Service	District Hospital	Regional Hospital	Provincial Tertiary Hospital	Central Hospital	Specialised Hospital	Private Hospitals	Beds
Public sector facilities (2007) and beds (2005)	9	1	3	0	0	0	0	1		298
Private sector facilities and beds (2008)									1	43

Gauteng

DC42 Sedibeng District Municipality



Sedibeng has a population of nearly a million people and has an above-average socio-economic status nationally. Almost all households, 97.5%, had access to piped water and 15.5% of the population had access to a medical aid scheme in 2007, the lowest in Gauteng.

The per capita expenditure on PHC increased to R233 in 2007/08 but was ranked amongst the lowest in the country.

The nurse clinical workload dropped steadily from 42.2 patients per day in 2004/05 to 24.2 patients per day in 2007/08.

The clinic supervision rate in Sedibeng increased to 86.3%, which is the 2nd highest in the country. The challenge now is to achieve a 100% rate. The utilisation rate of 1.6 visits per person in 2007/08 is the 4th lowest in the country. The cost per PDE in district hospitals increased by R250 to R1237 per day, while the average length of stay has been stable at around 3.0 days for the past four years. The bed utilisation rate increased marginally to 73.1%.

There was a slight increase in both the TB cure rate, to 65.5%, and smear conversion rate, to 61%. However, this priority programme still needs greater attention. Sedibeng had a low incidence (2.0%) of new STI cases, despite the district having the 3rd lowest condom distribution rate in the country of 4.6 condoms per man, per year, in 2007/08.

Much more needs to be done to improve this important HIV prevention activity.

There was a consistent increase in the proportion of pregnant mothers tested for HIV, from 23.2% in 2003/04 to 89.3% in 2007/08. Another consistent increase was in the rate of nevirapine uptake by HIV+ve mothers from 46% in 2004/05 to 95.5% in 2007/08. However, the data related to the nevirapine uptake by babies has fluctuated, making interpretation difficult. The delivery rate in facilities was stable at 86.6% for the last three years. The Caesarean section rate increased to 23.9% in 2007/08, and has been the highest in Gauteng for the past eight years. There were increases in the stillbirth (26.1 per 1000) and perinatal mortality (33.5 per 1000) rates in 2007/08, both of which were high compared to the rest of the province. The immunisation coverage increased marginally, to 88.4%, in 2007/08.

DC42 Sedibeng District Municipality		Year					District Rank (1=best)	National value
		2003/04	2004/05	2005/06	2006/07	2007/08	(1=best) most recent	most recent
Demographic and socio-economic	Population total			911 447	920 229	924 456		47 844 347
	Medical aid coverage (%)			14.8	14.5	15.5	17	14.3
	Access to piped water (%) - (2005-06 GHS, 2007 Comm. Survey)			97.4	95.7	97.5	11	85.8
	Deprivation index - (high value = most deprived)			1.99	1.87	1.67	12	
	Socio-economic quintile - (1=poor, 5=best)			4	4	4		
Input	Non-hospital PHC expenditure per capita - (real 2007/08 prices)			212	210	233	42	302
	% District health services expenditure on District Management			7.0	5.2	5.9		5.1
	% District health services expenditure on District Hospitals			36.5	35.7	33.8		42.7
	Cost per PDE			888	987	1 237		1128
Process	Nurse clinical workload		42.2	31.8	26.5	24.2	23	23.7
	Average length of stay (ALOS)	2.6	2.8	3.0	2.9	3.0	15	4.4
	Bed utilisation rate (BUR)	58.3	69.7	65.1	72.5	73.1	12	65.3
	Clinic supervision rate	-	-	-	67.4	86.3	2	48.2
Output	Male condom distribution rate	0.0	0.9	3.4	4.0	4.6	50	11.8
	Immunisation coverage < 1 year	74.0	74.4	84.4	88.1	88.4	20	84.2
	Immunisation drop out rate (DTP1-3)	5.4	8.0	11.6	0.3	-0.1	11	3.4
	Caesarean section rate	19.5	21.7	23.1	22.2	23.9		15.6
	Proportion ANC clients tested for HIV	23.2	52.5	77.7	83.8	89.3	22	79.6
	HIV prevalence among ANC clients tested (DHIS)	13.2	32.4	25.3	26.9	25.4	30	24.4
	HIV prevalence among ANC clients tested (survey)	-	-	-	35.0 (30.2-39.7)	33.8 (30.0-37.8)	39	28.3
	Nevirapine uptake rate among newborn babies of HIV+ve women	112.8	88.2	93.1	49.7	102.1	14	102.3
	Nevirapine uptake rate among pregnant HIV+ve women	0.0	46.0	50.8	76.2	95.5	8	76.1
Utilisation rate	1.5	1.4	1.5	1.7	1.6	49	2.2	
Outcome	Incidence of STI treated - new	3.5	2.4	2.1	2.4	2.0	5	4.4
	TB cure rate (2004 - 2006)	53.6	60.6	57.8	65.5		26	62.7
	TB smear conversion rate (2004 - 2007)	60.1	54.4	60.2	58.2	61.0	25	60.5
	TB case load (new Sm+)	-	-	-	-	2 194		135 604
	Diarrhoea incidence under 5 years	80.2	89.7	80.5	88.1	83.9	1	254.0
	Not gaining weight under 5 years rate	0.8	1.0	1.2	1.0	1.0	15	1.3
	Delivery rate in facility	78.5	85.8	86.7	86.7	86.6	14	80.6
Impact	Stillbirth rate	27.1	24.1	23.0	24.9	26.1	40	23.0
	Perinatal mortality rate in facility	30.9	28.5	27.8	32.7	33.5	36	31.1

Number of health facilities and beds	Clinic	CHCs	Mobile Service	District Hospital	Regional Hospital	Provincial Tertiary Hospital	Central Hospital	Specialised Hospital	Private Hospitals	Beds
Public sector facilities (2007) and beds (2005)	31	5	10	2	1	0	0	0		1 057
Private sector facilities and beds (2008)									7	709

Gauteng



West Rand's population is just over 800 000. The district falls into the 2nd highest socio-economic quintile with almost all households, 96.7%, having access to piped water, while medical aid coverage, 18.3%, was well above average for SA.

Expenditure on PHC was stable over the last two years, and at R236 per person in 2007/08, but remained amongst the lowest in the country. The cost per PDE in district hospitals increased by R256 to R1235. The

DC48 West Rand District Municipality

utilisation rate was stable at 1.7 visits per person – the 6th lowest in SA. The nurse clinical workload dropped to 35.7 patients per nurse, per day, in 2007/08 following a three-year gradual increase.

The clinic supervision rate dropped from an unrealistic 106% in 2006/07 to 54.9%. There was an increase in the average length of stay to 4.8 days while the bed occupancy rate decreased to 66.1%.

The TB cure rate improved to 77.4% in 2006, the best in Gauteng and there was a corresponding increase in the smear conversion rate to 84.9% in 2007 – the 2nd best in SA.

The condom distribution rate increased to 4.7 condoms per male per year but was the 4th lowest in SA in 2007/08. The incidence of new STIs treated decreased to 3.1% despite the low condom distribution. The proportion of pregnant women tested for HIV increased steadily from 15.8% in 2003/04 to 69.5% in

2007/08, but was amongst the ten lowest in SA. The rate of nevirapine uptake amongst HIV+ve women was 69.2% and the data related to the uptake of nevirapine amongst babies has fluctuated making it difficult to interpret.

The Caesarean section rate increased steadily from 5.6% in 2001/02 to 17.5% and all women reportedly delivered their babies in a facility. The delivery rate in facilities of 111.7% in 2007/08; although this is the highest in the country, it is over 100%, possibly due to the substantial underestimate of population size which affects the denominator. The stillbirth rate decreased to 14.1 per 1000 births while the perinatal mortality rate increased to 20.4 per 1000 births in 2007/08.

The immunisation coverage rate for children under one-year improved from 96.2% in 2006/07 to 102% in 2007/08. The immunisation drop out rate remained stable at 4.2% over the same period.

DC48 West Rand District Municipality		Year					District Rank (1=best)	National value
		2003/04	2004/05	2005/06	2006/07	2007/08	most recent	most recent
Demographic and socio-economic	Population total			777 771	793 531	805 553		47 844 347
	Medical aid coverage (%)			19.9	18.7	18.3	11	14.3
	Access to piped water (%) - (2005-06 GHS, 2007 Comm. Survey)			95.9	95.0	96.7	16	85.8
	Deprivation index - (high value = most deprived)			1.74	1.93	1.76	14	
	Socio-economic quintile - (1=poor, 5=best)			5	4	4		
Input	Non-hospital PHC expenditure per capita - (real 2007/08 prices)			272	237	236	41	302
	% District health services expenditure on District Management			12.9	9.5	12.4		5.1
	% District health services expenditure on District Hospitals			37.4	40.1	30.5		42.7
	Cost per PDE			960	979	1 235		1128
Process	Nurse clinical workload		31.8	34.4	36.8	35.7	8	23.7
	Average length of stay (ALOS)	3.9	3.9	3.7	4.2	4.8	38	4.4
	Bed utilisation rate (BUR)	70.3	69.2	65.1	72.5	66.1	26	65.3
	Clinic supervision rate	-	-	-	106.9	54.9	24	48.2
Output	Male condom distribution rate	1.0	2.0	5.3	3.7	4.7	49	11.8
	Immunisation coverage < 1 year	65.6	62.9	87.7	96.2	102.0	4	84.2
	Immunisation drop out rate (DTP1-3)	8.5	10.7	7.2	4.2	4.2	31	3.4
	Caesarean section rate	11.9	13.7	14.9	16.5	17.5		15.6
	Proportion ANC clients tested for HIV	15.8	26.2	39.2	64.7	69.5	43	79.6
	HIV prevalence among ANC clients tested (DHIS)	23.2	28.9	30.1	30.7	29.9	41	24.4
	HIV prevalence among ANC clients tested (survey)	-	-	-	34.6 (30.0-39.2)	32.4 (28.4-36.7)	33	28.3
	Nevirapine uptake rate among newborn babies of HIV+ve women	-	100.0	118.2	43.3	98.2	35	102.3
	Nevirapine uptake rate among pregnant HIV+ve women	0.0	0.0	32.3	61.9	69.2	28	76.1
	Utilisation rate	1.3	1.3	1.4	1.7	1.7	47	2.2
Outcome	Incidence of STI treated - new	3.5	3.1	2.9	3.5	3.1	17	4.4
	TB cure rate (2004 - 2006)	72	73.9	70.6	77.4		3	62.7
	TB smear conversion rate (2004 - 2007)	57.5	70.3	70.6	80.7	84.9	2	60.5
	TB case load (new Sm+)	-	-	-	-	1 458		135 604
	Diarrhoea incidence under 5 years	84.0	88.3	83.1	107.6	139.2	9	254.0
	Not gaining weight under 5 years rate	0.4	0.6	0.7	0.6	0.4	2	1.3
	Delivery rate in facility	78.5	96.3	97.1	105.6	111.7	1	80.6
Impact	Stillbirth rate	25.0	24.3	16.4	15.2	14.1	3	23.0
	Perinatal mortality rate in facility	39.1	49.2	27.0	18.0	20.4	3	31.1

Number of health facilities and beds	Clinic	CHCs	Mobile Service	District Hospital	Regional Hospital	Provincial Tertiary Hospital	Central Hospital	Specialised Hospital	Private Hospitals	Beds
Public sector facilities (2007) and beds (2005)	27	2	7	1	1	0	0	1		1 500
Private sector facilities and beds (2008)									4	643