

Western Cape Province



The Western Cape, with a population of approximately 4.9 million people contains 10% of the SA population. In 2007, it had the best socio-economic development in SA and the highest proportion of households with access to piped water (98.9%) in 2007. The average medical aid coverage of 22.3% in 2007 was also the highest in the country but the intra-provincial differences ranged from 14.1% in the Central Karoo to 24.8% in the West Coast.

The average per capita expenditure on PHC was the highest in the country in 2007/08 at R428 per person. However, this concealed wide differences between the West Coast with a per capita expenditure on PHC of R526 and Overberg, at R320, although, this intra-provincial inequity has decreased since 2001/02.

The utilisation rate of the Western Cape facilities was 2.7 visits per person year in 2007/08, 0.3 percentage points down from 2003/04. The average clinic supervision rate of 33.7% was the 3rd lowest among the provinces and far too low to ensure consistent quality of PHC services. The bed utilisation rate in district hospitals steadily increased from 68.8% in 2003/04 to 81.0% in 2007/08, the highest in SA. The average length of stay was 3.3 days in 2007/08, although the ALOS in the City of Cape Town was much longer than the other districts at 4.4 days.

The province generally performed well in the management of priority diseases, compared to the rest of the country. The TB cure rate at 77.3% in 2006 was the best in SA and this was coupled with a smear conversion rate of 71.1% in 2007, despite the province having the 2nd highest incidence of new smear +ve cases in the country. The challenge now is to now get both indicators to over 85% to be in line with WHO targets.

The province did very well with an average of 95.7% of antenatal clients tested for HIV in 2007/08 which was the best rate in the country. The provincial HIV prevalence is amongst the lowest in the country, although the provincial value of 12.6% published in the antenatal survey appears implausibly low.¹ However, the uptake rate of nevirapine in HIV+ve pregnant mothers decreased from 69.8% in 2006/07 to 64.9% in 2007/08. The slight decrease in

Fiorenza Monticelli and Elliot Sello

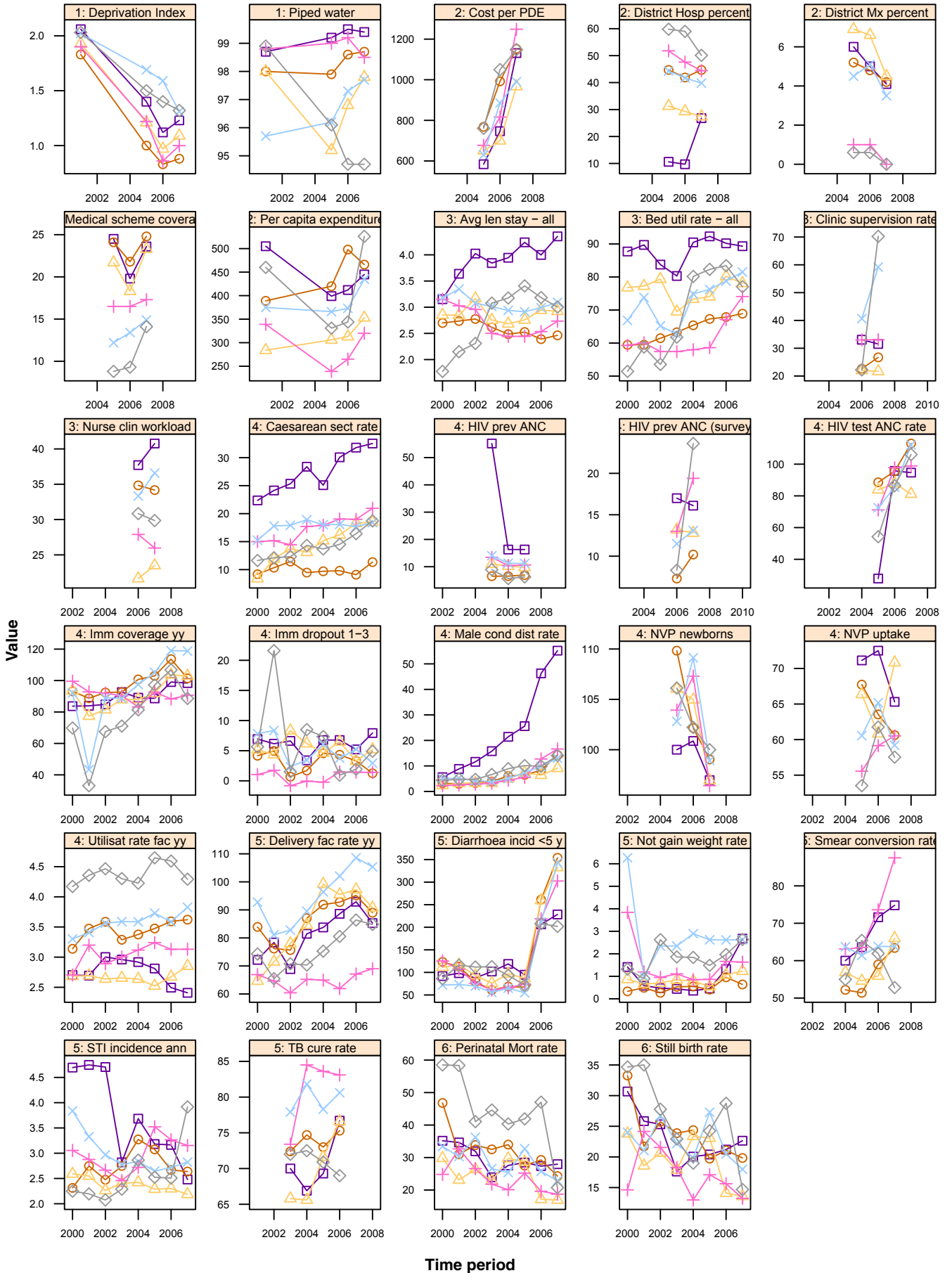
the nevirapine given to babies to 97.2% in 2007/08 is most probably due to improved data quality.

The Western Cape distributed 40.5 condoms per male in 2007/08 which was by far the highest number in the country. This was largely due to the initiative by the City of Cape Town and NGOs working in the HIV and Aids sector which has over a three-year period concentrated on the dramatic scaling up of condom distribution in Khayelitsha and has resulted in the metro having had far greater distribution rates than any other district in the country. This probably impacted on the incidence of STIs which had decreased from 3.4% in 2004/05 to 2.5% in 2007/08 and was the lowest in the country.

The Caesarean section rate increased by 3.3 percentage points since 2003/04 to 20.7% in 2007/08, with the City of Cape Town having the highest rate in SA. The delivery rate in facility of 87.2% was the highest in the country despite a decrease from 93.7% in 2006/07. The stillbirth rate and the perinatal mortality rate were both the lowest in SA. According to the data, all children under one year (100.5%) were immunised in 2007/08, however the drop out rate from DTP1 to DTP3 worsened to 6.5% and was the highest in the country for the past two years. Diarrhoea incidence in children appears to have increased substantially in all districts from 2006/07 and should be investigated.

¹ Dorrington R, Bourne D. Has HIV prevalence peaked in South Africa? Can the report on the latest antenatal survey be trusted to answer this question? S Afr Med J. 2008; 98: 754-5.
URL: <http://www.samj.org.za/>

Annual indicators for districts in Western Cape (WC)



Section B: District and Province Profiles

WC Western Cape		Year					District Rank (1=best) most recent	National value most recent
		2003/04	2004/05	2005/06	2006/07	2007/08		
Demographic and socio-economic	Population total			4 646 393	4 745 473	4 850 324		47 844 347
	Medical aid coverage (%)			22.4	18.8	22.4	-	14.3
	Access to piped water (%) - (2005-06 GHS, 2007 Comm. Survey)			98.3	98.8	98.9	-	85.8
	Deprivation index - (high value = most deprived)			-	-	-	-	
	Socio-economic quintile - (1=poor, 5=best)			-	-	-	-	
Input	Non-hospital PHC expenditure per capita - (real 2007/08 prices)			376	392	428	-	302
	% District health services expenditure on District Management			5.4	4.9	3.8		5.1
	% District health services expenditure on District Hospitals			25.7	23.8	31.6		42.7
	Cost per PDE			662	843	1 096		1128
Process	Nurse clinical workload		-	-	30.8	29.9	-	23.7
	Average length of stay (ALOS)	3.1	3.1	3.2	3.2	3.3	-	4.4
	Bed utilisation rate (BUR)	68.8	77.0	78.7	80.4	81.0	-	65.3
	Clinic supervision rate	-	-	-	30.8	33.7	-	48.2
Output	Male condom distribution rate	11.6	15.9	19.3	33.4	40.5	-	11.8
	Immunisation coverage < 1 year	91.2	90.0	91.6	101.8	100.5	-	84.2
	Immunisation drop out rate (DTP1-3)	3.6	6.0	6.0	4.7	6.5	-	3.4
	Caesarean section rate	17.4	17.1	18.6	19.5	20.7		15.6
	Proportion ANC clients tested for HIV	-	-	47.6	93.2	95.7	-	79.6
	HIV prevalence among ANC clients tested (DHIS)	-	-	26.9	13.8	13.9	-	24.4
	HIV prevalence among ANC clients tested (survey)	-	-	-	15.1 (11.6-18.7)	12.6 (10.1-15.6)	-	28.3
	Nevirapine uptake rate among newborn babies of HIV+ve women	-	-	101.2	102.2	97.2	-	102.3
	Nevirapine uptake rate among pregnant HIV+ve women	-	-	68.9	69.8	64.9	-	76.1
Utilisation rate	3.0	3.0	2.9	2.7	2.7	-	2.2	
Outcome	Incidence of STI treated - new	2.7	3.4	3.0	3.0	2.5	-	4.4
	TB cure rate (2004 - 2006)	71.9	70.1	71.9	77.3		-	62.7
	TB smear conversion rate (2004 - 2007)	38.5	58.0	60.7	66.9	71.1	-	60.5
	TB case load (new Sm+)	-	-	-	-	16 619		135 604
	Diarrhoea incidence under 5 years	89.7	105.2	87.2	217.4	262.3	-	254.0
	Not gaining weight under 5 years rate	0.8	0.7	0.8	1.4	2.2	-	1.3
	Delivery rate in facility	82.1	86.4	89.6	93.7	87.2	-	80.6
Impact	Stillbirth rate	18.6	20.5	21.4	20.0	20.3	-	23.0
	Perinatal mortality rate in facility	24.7	27.9	28.9	25.8	25.3	-	31.1

Number of health facilities and beds	Clinic	CHCs	Mobile Service	District Hospital	Regional Hospital	Provincial Tertiary Hospital	Central Hospital	Specialised Hospital	Private Hospitals	Beds
Public sector facilities (2007) and beds (2005)	263	64	98	35	5	0	3	18		10 021
Private sector facilities and beds (2008)									34	4 042

Western Cape

DC2 Cape Winelands District Municipality



Cape Winelands district has the 2nd highest population of over 650 000 people, and falls into the highest socio-economic quintile with 97.8% of households having access to piped water. The medical aid coverage was 23.3% in 2007, 7th highest in SA.

The PHC expenditure increased by R40 per capita to R353 in 2007/08 and the utilisation rate increased from 2.7 visits per person per year in 2006/07 to 2.9 in 2007/08. The

nurse clinical workload of 23.5 patients per nurse per day was the lowest in the province. The supervision rate of 21.7% was inadequate with three out of four clinics not receiving regular supervision. The cost per PDE of R967 in district hospitals was the lowest in the province in 2007/08. There was a small decrease in the bed utilisation rate to 78.1% in 2007/08 while the average length of stay was stable at 2.9 days.

The TB cure rate of 76.6% was ranked the 5th highest in the country in 2006 and there was significant improvement in the smear conversion rate from 54.6% in 2005 to 66.0% in 2007. The proportion of antenatal clients tested for HIV decreased to 81.1% in 2007/08. The uptake rate of nevirapine for HIV+ve mothers increased by 10 percentage points to 70.8%, whilst the nevirapine uptake rate among babies was close to 100% in 2007/08.

The condom distribution rate increased to 9.1 condoms per man in 2007/08 but remained the lowest in the province. The district had the lowest incidence of STIs (2.2%) in the province and was ranked 6th in the country.

The Caesarean section rate increased to 18.5% in the last year and the delivery rate in a facility of 90.7% was among the ten highest in the country. The perinatal mortality rate of 16.9 in 2007/08 was the lowest in the country while the stillbirth rate of 13.6 was the 2nd lowest. All children were immunised in 2007/08 and the drop out rate was 5.2%.

DC2 Cape Winelands District Municipality		Year					District Rank (1=best) most recent	National value most recent
		2003/04	2004/05	2005/06	2006/07	2007/08		
Demographic and socio-economic	Population total			627 110	639 618	652 298		47 844 347
	Medical aid coverage (%)			21.7	18.3	23.3	7	14.3
	Access to piped water (%) - (2005-06 GHS, 2007 Comm. Survey)			95.2	96.8	97.8	8	85.8
	Deprivation index - (high value = most deprived)			1.21	0.97	1.09	4	
	Socio-economic quintile - (1=poor, 5=best)			5	5	5		
Input	Non-hospital PHC expenditure per capita - (real 2007/08 prices)			306	313	353	14	302
	% District health services expenditure on District Management			6.9	6.6	4.5		5.1
	% District health services expenditure on District Hospitals			31.3	29.3	27.4		42.7
	Cost per PDE			650	700	967		1128
Process	Nurse clinical workload		-	-	21.6	23.5	25	23.7
	Average length of stay (ALOS)	2.8	2.7	2.8	2.9	2.9	10	4.4
	Bed utilisation rate (BUR)	69.5	73.3	74.1	80.2	78.1	7	65.3
	Clinic supervision rate	-	-	-	22.0	21.7	47	48.2
Output	Male condom distribution rate	3.3	5.0	7.3	6.4	9.1	23	11.8
	Immunisation coverage < 1 year	87.9	88.0	91.9	103.7	102.9	3	84.2
	Immunisation drop out rate (DTP1-3)	6.2	4.6	6.5	3.3	5.2	43	3.4
	Caesarean section rate	13.1	15.2	16.2	18.3	18.5		15.6
	Proportion ANC clients tested for HIV	-	-	83.9	87.9	81.1	33	79.6
	HIV prevalence among ANC clients tested (DHIS)	-	-	11.0	10.3	9.8	5	24.4
	HIV prevalence among ANC clients tested (survey)	-	-	-	13.2 (10.4-16.1)	12.8 (10.1-16.1)	4	28.3
	Nevirapine uptake rate among newborn babies of HIV+ve women	-	-	106.0	105.0	96.9	39	102.3
	Nevirapine uptake rate among pregnant HIV+ve women	-	-	66.4	60.8	70.8	26	76.1
Utilisation rate	2.7	2.6	2.5	2.7	2.9	12	2.2	
Outcome	Incidence of STI treated - new	2.4	2.4	2.3	2.3	2.2	6	4.4
	TB cure rate (2004 - 2006)	65.8	65.6	71.6	76.6		5	62.7
	TB smear conversion rate (2004 - 2007)	36.6	56.9	54.6	55.9	66.0	16	60.5
	TB case load (new Sm+)	-	-	-	-	2 811		135 604
	Diarrhoea incidence under 5 years	76.1	96.9	87.0	259.4	332.7	36	254.0
	Not gaining weight under 5 years rate	0.8	0.8	0.5	1.1	1.2	23	1.3
	Delivery rate in facility	84.6	99.2	95.5	97.3	90.7	9	80.6
Impact	Stillbirth rate	17.9	23.4	23.1	14.1	13.6	2	23.0
	Perinatal mortality rate in facility	22.8	29.7	28.7	17.1	16.9	1	31.1

Number of health facilities and beds	Clinic	CHCs	Mobile Service	District Hospital	Regional Hospital	Provincial Tertiary Hospital	Central Hospital	Specialised Hospital	Private Hospitals	Beds
Public sector facilities (2007) and beds (2005)	55	3	24	4	2	0	0	2		1 025
Private sector facilities and beds (2008)									4	448

Western Cape

DC5 Central Karoo District Municipality

ISRDP



Central Karoo has by far the smallest population of all the districts in the country. Although it is classified as one of the 12 rural ISRDP nodes, it is among the better socio-economically developed districts in SA, with 94.7% of households having had access to piped water in 2007.

The PHC expenditure per capita increased significantly from R344 in 2006/07 to R526 in 2007/08 and was the 2nd highest in the country. The PHC utilisation rate

at 4.3 visits per person per year, was the highest in SA for the past four years. There was no expenditure on district management in 2007/08, probably because the district continued to be managed from Eden district.

The nurse clinical workload, although lower than the previous year, remained well above the national average in 2007/08. The clinic supervision rate increased substantially from 22.2% to 70.2% and was ranked the 5th best in the country. The bed utilisation rate and ALOS in district hospitals both decreased in 2007/08 to 77% and 3 days respectively.

The TB cure rate decreased by 1.9 percentage points to 69.0 % in 2006 and the smear conversion rate decreased by 9.1 percentage points to 52.8% in 2007. This is concerning and urgent attention needs to be given to the TB control programme in this district.

The prevalence of HIV (antenatal survey) of 23.6% was the highest in the province, although this should be interpreted with

caution since it is a huge increase from 2006 and the confidence intervals are extremely wide. All babies of HIV+ve mothers reportedly received nevirapine in 2007/08, but the nevirapine uptake rate of HIV+ve mothers was much lower and fluctuated over the past three years, making interpretation difficult.

The male condom distribution rate increased slightly to 14.1 condoms per male, 8th highest in the country. The delivery rate in facility dropped slightly to 84.8%, but remained above the national average of 80.6% in 2007/08. There has been a strong downward trend in both the stillbirth and perinatal mortality rates and both were ranked as the 4th best in the country in 2007/08, although there is a fair amount of variability in the data due to the small population size. The immunisation drop out rate fluctuated substantially in the last five years making interpretation difficult.

DC5 Central Karoo District Municipality		Year					District Rank (1=best)	National value
		2003/04	2004/05	2005/06	2006/07	2007/08	most recent	most recent
Demographic and socio-economic	Population total			61 380	62 364	63 289		47 844 347
	Medical aid coverage (%)			8.8	9.3	14.1	22	14.3
	Access to piped water (%) - (2005-06 GHS, 2007 Comm. Survey)			96.1	94.7	94.7	22	85.8
	Deprivation index - (high value = most deprived)			1.50	1.40	1.32	7	
	Socio-economic quintile - (1=poor, 5=best)			5	5	5		
Input	Non-hospital PHC expenditure per capita - (real 2007/08 prices)			331	344	526	2	302
	% District health services expenditure on District Management			0.6	0.6	0.0		5.1
	% District health services expenditure on District Hospitals			59.8	59.0	50.1		42.7
	Cost per PDE			761	1 050	1 148		1128
Process	Nurse clinical workload		-	-	30.8	29.9	14	23.7
	Average length of stay (ALOS)	3.1	3.2	3.4	3.2	3.0	13	4.4
	Bed utilisation rate (BUR)	61.8	80.2	82.3	83.4	77.0	10	65.3
Output	Clinic supervision rate	-	-	-	22.2	70.2	5	48.2
	Male condom distribution rate	6.6	8.9	10.1	9.9	14.1	8	11.8
	Immunisation coverage < 1 year	71.1	81.4	97.2	106.8	88.6	19	84.2
	Immunisation drop out rate (DTP1-3)	8.5	7.3	0.9	1.9	4.9	39	3.4
	Caesarean section rate	14.3	13.7	14.5	16.4	18.7		15.6
	Proportion ANC clients tested for HIV	-	-	54.2	86.4	106.1	5	79.6
	HIV prevalence among ANC clients tested (DHIS)	-	-	8.9	5.7	6.3	2	24.4
	HIV prevalence among ANC clients tested (survey)	-	-	-	8.3 (0.5 -16.1)	23.6 (13.2-37.0)	16	28.3
	Nevirapine uptake rate among newborn babies of HIV+ve women	-	-	106.1	102.2	100.0	21	102.3
	Nevirapine uptake rate among pregnant HIV+ve women	-	-	53.5	61.8	57.5	43	76.1
Outcome	Utilisation rate	4.3	4.2	4.6	4.6	4.3	1	2.2
	Incidence of STI treated - new	2.3	2.9	2.5	2.5	3.9	27	4.4
	TB cure rate (2004 - 2006)	72	72.5	70.9	69.0		19	62.7
	TB smear conversion rate (2004 - 2007)	39.4	55.0	65.4	61.9	52.8	36	60.5
	TB case load (new Sm+)	-	-	-	-	274		135 604
	Diarrhoea incidence under 5 years	112.6	93.4	71.6	208.0	201.8	23	254.0
	Not gaining weight under 5 years rate	1.9	1.8	1.5	2.0	2.6	44	1.3
	Delivery rate in facility	70.3	75.3	80.5	86.4	84.8	22	80.6
Impact	Stillbirth rate	22.9	19.0	24.3	28.7	14.7	4	23.0
	Perinatal mortality rate in facility	44.6	40.3	41.9	47.0	20.7	4	31.1

Number of health facilities and beds	Clinic	CHCs	Mobile Service	District Hospital	Regional Hospital	Provincial Tertiary Hospital	Central Hospital	Specialised Hospital	Private Hospitals	Beds
Public sector facilities (2007) and beds (2005)	6	1	6	4	0	0	0	1	0	194
Private sector facilities and beds (2008)									0	0

Western Cape



The Cape Town metro with a population of over 3 million people, falls into the highest socio-economic quintile and was ranked as the least deprived district in SA in 2007, although there are large differences in deprivation in areas within the metro. Almost all households in 2007 had access to piped water and close on 24% of people had access to a medical aid scheme. The PHC expenditure increased to R445 per capita per year in 2007/08, ranking Cape Town within the top five spending districts in SA

and the highest among the metros. The nurse clinical workload of 40.8 patients per nurse per day was the highest in the province and ranked 3rd highest in SA.

The City of Cape Town had the highest new smear +ve TB case load in the province (8991 cases), the 2nd highest in the country. However, both the TB cure rate and the TB smear conversion rate improved to 76.7% and 74.8% respectively.

The proportion of antenatal clients tested for HIV in 2007/08 was 94.7%. The 2007/08 HIV prevalence rate was 16.1% (survey), although it was found to vary considerably across the metro as identified in other reports. The nevirapine uptake rate of HIV+ve mothers and that of their babies was 65.3% and 97% respectively. As a result of a strategic focus by the metro, the male condom distribution rate continued to be the highest in SA for the fourth year running, nearly three times that of the next best district.

CPT City of Cape Town

The Caesarean section rate of 32.5% was the highest in the province in 2007/08, but the delivery rate in facilities dropped to 85.3%, most probably due to missing data from some of the district hospitals. The stillbirth rate increased to 22.6 per 1000 births in 2007/08 and the perinatal mortality rate increased to 28.0 per 1000 births. The immunisation coverage decreased slightly to 98.4% in 2007/08 and the drop out rate of 7.9% was more than twice the national average.

CPT City of Cape Town Metropolitan Municipality		Year					District Rank (1=best) most recent	National value most recent
		2003/04	2004/05	2005/06	2006/07	2007/08		
Demographic and socio-economic	Population total			3 047 476	3 110 655	3 179 237		47 844 347
	Medical aid coverage (%)			24.5	19.8	23.6	6	14.3
	Access to piped water (%) - (2005-06 GHS, 2007 Comm. Survey)			99.2	99.5	99.4	1	85.8
	Deprivation index - (high value = most deprived)			1.40	1.12	1.23	5	
	Socio-economic quintile - (1=poor, 5=best)			5	5	5		
Input	Non-hospital PHC expenditure per capita - (real 2007/08 prices)			399	412	445	4	302
	% District health services expenditure on District Management			6.0	5.0	4.1		5.1
	% District health services expenditure on District Hospitals			10.6	9.7	26.8		42.7
	Cost per PDE			584	747	1 131		1128
Process	Nurse clinical workload		-	-	37.7	40.8	3	23.7
	Average length of stay (ALOS)	3.8	3.9	4.2	4.0	4.4	29	4.4
	Bed utilisation rate (BUR)	80.3	90.5	92.3	90.2	89.3	2	65.3
	Clinic supervision rate	-	-	-	33.1	31.5	44	48.2
Output	Male condom distribution rate	15.8	21.4	25.6	46.3	55.2	1	11.8
	Immunisation coverage < 1 year	92.6	89.1	88.6	99.1	98.4	9	84.2
	Immunisation drop out rate (DTP1-3)	3.4	6.8	6.8	5.2	7.9	47	3.4
	Caesarean section rate	28.4	25.1	30.1	31.8	32.5		15.6
	Proportion ANC clients tested for HIV	-	-	27.9	95.7	94.7	13	79.6
	HIV prevalence among ANC clients tested (DHIS)	-	-	55.2	16.3	16.3	14	24.4
	HIV prevalence among ANC clients tested (survey)	-	-	-	17.0 (15.5-18.4)	16.1 (14.7-17.5)	9	28.3
	Nevirapine uptake rate among newborn babies of HIV+ve women	-	-	100.0	100.9	97.0	38	102.3
	Nevirapine uptake rate among pregnant HIV+ve women	-	-	71.1	72.5	65.3	30	76.1
Utilisation rate	3.0	2.9	2.8	2.5	2.4	22	2.2	
Outcome	Incidence of STI treated - new	2.8	3.7	3.2	3.2	2.5	8	4.4
	TB cure rate (2004 - 2006)	70	66.9	69.3	76.7		4	62.7
	TB smear conversion rate (2004 - 2007)	39.2	60.0	63.6	71.6	74.8	9	60.5
	TB case load (new Sm+)	-	-	-	-	8 991		135 604
	Diarrhoea incidence under 5 years	102.0	118.8	94.8	206.5	228.4	25	254.0
	Not gaining weight under 5 years rate	0.4	0.4	0.5	1.3	2.7	45	1.3
	Delivery rate in facility	81.5	83.7	88.6	92.9	85.3	18	80.6
Impact	Stillbirth rate	17.6	20.0	20.4	21.2	22.6	22	23.0
	Perinatal mortality rate in facility	23.9	27.6	28.4	27.4	28.0	16	31.1

Number of health facilities and beds	Clinic	CHCs	Mobile Service	District Hospital	Regional Hospital	Provincial Tertiary Hospital	Central Hospital	Specialised Hospital	Private Hospitals	Beds
Public sector facilities (2007) and beds (2005)	111	52	6	8	2	0	3	13		7 501
Private sector facilities and beds (2008)									23	3 106

Western Cape



Eden district has approximately 460 000 people and is in the highest socio-economic quintile with almost all (97.7%) of its households having access to piped water. Like Cape Town, the recent Community Survey population estimate of 513 000 indicates that previous projections underestimated the growth in this district. The PHC expenditure increased by R63 per capita to R435 in 2007/08, the 5th highest spending district in SA. The utilisation rate

DC4 Eden District Municipality

has remained between 3.6 and 3.8 visits per person per year over the last five years. The nurse clinical workload increased to 36.6 patients per nurse per day in 2007/08. The clinic supervision rate of 59.2%, although improved from 2006/07 and the highest in the province, indicates that only two out of three clinics received regular supervision in 2007/08, which is inadequate for improvement in the quality of PHC services.

The TB programme improved with the TB cure rate reaching 80.6% in 2006 (the 2nd highest in SA), whilst the smear conversion rate showed no improvement in 2007 from the 63.8% achieved in 2006. According to the data, more antenatal clients were tested for HIV than were recorded as having attended the clinics for a first visit, resulting in a testing rate of 112.1%, and this needs to be checked for quality purposes. Nevirapine uptake in HIV+ve mothers was around 60%, while the data suggest complete coverage for babies born to HIV+ve women.

Eden had the lowest incidence of diarrhoea in the province in previous years, but this has increased substantially in 2007/08 to 343.3 cases per 1000 children under 5. The male condom distribution rate improved to 13 condoms per male per year in 2007/08 and the incidence of STIs remained between 2.8% and 2.6% over the last four years.

The Caesarean section rate increased marginally in 2007/08, and all women delivered their babies in a facility. The delivery rate figure of over 100% is possibly due to the under-estimate of population size which affects the denominator. There was a decrease in the stillbirth and perinatal mortality rates to 18.0 and 22.9 per 1000 births respectively, with both indicators ranked within the ten lowest in SA.

DC4 Eden District Municipality		Year					District Rank (1=best)	National value
		2003/04	2004/05	2005/06	2006/07	2007/08	most recent	most recent
Demographic and socio-economic	Population total			444 324	454 424	464 491		47 844 347
	Medical aid coverage (%)			12.2	13.4	14.9	19	14.3
	Access to piped water (%) - (2005-06 GHS, 2007 Comm. Survey)			96.2	97.3	97.7	9	85.8
	Deprivation index - (high value = most deprived)			1.69	1.59	1.31	6	
	Socio-economic quintile - (1=poor, 5=best)			5	5	5		
Input	Non-hospital PHC expenditure per capita - (real 2007/08 prices)			366	373	435	5	302
	% District health services expenditure on District Management			4.5	5.1	3.5		5.1
	% District health services expenditure on District Hospitals			44.3	41.7	39.8		42.7
	Cost per PDE			630	886	991		1128
Process	Nurse clinical workload		-	-	33.3	36.6	6	23.7
	Average length of stay (ALOS)	3.0	2.9	2.9	3.0	3.1	16	4.4
	Bed utilisation rate (BUR)	62.6	74.9	76.2	78.8	81.5	4	65.3
Output	Clinic supervision rate	-	-	-	40.6	59.2	19	48.2
	Male condom distribution rate	3.8	5.1	7.4	9.8	13.0	9	11.8
	Immunisation coverage < 1 year	88.6	97.5	105.1	119.0	118.8	2	84.2
	Immunisation drop out rate (DTP1-3)	3.4	6.0	3.8	5.2	2.9	22	3.4
	Caesarean section rate	18.9	18.0	18.1	17.7	18.4		15.6
	Proportion ANC clients tested for HIV	-	-	72.5	85.6	112.1	3	79.6
	HIV prevalence among ANC clients tested (DHIS)	-	-	14.0	11.3	11.2	8	24.4
	HIV prevalence among ANC clients tested (survey)	-	-	-	11.5 (8.1-14.8)	13.1 (9.7-17.4)	5	28.3
	Nevirapine uptake rate among newborn babies of HIV+ve women	-	-	102.8	109.1	98.9	31	102.3
	Nevirapine uptake rate among pregnant HIV+ve women	-	-	60.5	65.2	59.2	40	76.1
Outcome	Utilisation rate	3.6	3.6	3.7	3.6	3.8	2	2.2
	Incidence of STI treated - new	2.8	2.8	2.6	2.7	2.8	14	4.4
	TB cure rate (2004 - 2006)	77.9	81.8	78.3	80.6		2	62.7
	TB smear conversion rate (2004 - 2007)	39.0	63.7	61.4	63.8	63.8	21	60.5
	TB case load (new Sm+)	-	-	-	-	2 305		135 604
	Diarrhoea incidence under 5 years	55.5	65.0	54.7	211.2	343.3	39	254.0
	Not gaining weight under 5 years rate	2.3	2.9	2.6	2.6	2.6	43	1.3
	Delivery rate in facility	89.5	96.4	102.0	108.6	105.3	2	80.6
	Impact	Stillbirth rate	22.2	19.8	27.3	20.5	18.0	8
Perinatal mortality rate in facility		26.6	25.4	32.7	25.7	22.9	6	31.1

Number of health facilities and beds	Clinic	CHCs	Mobile Service	District Hospital	Regional Hospital	Provincial Tertiary Hospital	Central Hospital	Specialised Hospital	Private Hospitals	Beds
Public sector facilities (2007) and beds (2005)	33	5	24	6	1	0	0	1		703
Private sector facilities and beds (2008)									5	397

Western Cape

DC3 Overberg District Municipality



Overberg district in the Western Cape with population of just over 200 000 people was one of the highest ranked districts in terms of socio-economic status in 2007. Household access to piped water was 98.5% in 2007 and medical aid coverage was 17.3%. Although the PHC expenditure increased by R55 to R320 per capita in 2007/08, it remains the lowest expenditure of all the districts in the province since 2005/06.

The utilisation rate was stable at 3.1 visits per person in 2007/08, as was the clinic supervision rate of 33%. This lack of supervision, with two out of three clinics not receiving regular supervision, is not conducive to improving the quality of PHC. There was a large increase in the cost per PDE from R816 in 2006/07 to R1249 in 2007/08. The nurse clinical workload of 26 patients per day per nurse was the 2nd lowest in the province in 2007/08.

The average length of stay in district hospitals of 2.7 days was ranked amongst the lowest in SA. The bed utilisation rate increased to 74.1% in 2007/08.

The TB cure rate of 83.1% in 2006 was ranked the highest in the country. It is pleasing to see that Overberg also ranked best on the smear conversion rate which improved from 73.6% in 2006 to 87.5% in 2007. The challenge now is to get the TB cure rate to over 85% to be in line with WHO targets.

Although the Overberg is to be congratulated on the HIV antenatal testing rate of 98.9% achieved in 2007/08, the nevirapine uptake rate of HIV+ve pregnant women of 60.5% needs improvement. The condom distribution rate increased from 12.8 to 16.6 condoms per man, per year, and the STIs incidence was 3.2%, well below the national average in 2007/08.

The delivery rate in facilities was the lowest in the province (69%) but the Caesarean section rate increased to 21% which was the 2nd highest in the province in 2007/08. The stillbirth rate and the perinatal mortality rate were ranked as the lowest and 2nd lowest in the country respectively in 2007/08. The immunisation coverage increased marginally to 90.7% in 2007/08 and the drop out rate was stable at 1.4%.

DC3 Overberg District Municipality		Year					District Rank (1=best)	National value
		2003/04	2004/05	2005/06	2006/07	2007/08	(1=best)	most recent
Demographic and socio-economic	Population total			194 695	200 213	205 910		47 844 347
	Medical aid coverage (%)			16.5	16.5	17.3	14	14.3
	Access to piped water (%) - (2005-06 GHS, 2007 Comm. Survey)			99.0	99.2	98.5	5	85.8
	Deprivation index - (high value = most deprived)			1.22	0.86	1.00	3	
	Socio-economic quintile - (1=poor, 5=best)			5	5	5		
Input	Non-hospital PHC expenditure per capita - (real 2007/08 prices)			239	265	320	19	302
	% District health services expenditure on District Management			1.0	1.0	0.0		5.1
	% District health services expenditure on District Hospitals			51.8	47.6	44.4		42.7
	Cost per PDE			677	816	1 249		1128
Process	Nurse clinical workload		-	-	27.9	26.0	20	23.7
	Average length of stay (ALOS)	2.5	2.4	2.4	2.5	2.7	9	4.4
	Bed utilisation rate (BUR)	57.4	58.0	58.6	67.1	74.1	11	65.3
	Clinic supervision rate	-	-	-	33.0	33.0	42	48.2
Output	Male condom distribution rate	3.2	4.4	5.5	12.7	16.6	3	11.8
	Immunisation coverage < 1 year	90.3	83.2	92.7	88.3	90.7	14	84.2
	Immunisation drop out rate (DTP1-3)	-0.1	-0.2	1.5	1.4	1.4	16	3.4
	Caesarean section rate	17.7	17.9	19.0	19.0	21.0		15.6
	Proportion ANC clients tested for HIV	-	-	71.2	97.8	98.9	10	79.6
	HIV prevalence among ANC clients tested (DHIS)	-	-	13.4	10.4	10.6	7	24.4
	HIV prevalence among ANC clients tested (survey)	-	-	-	13.0 (7.5 -18.5)	19.4 (13.3-26.9)	11	28.3
	Nevirapine uptake rate among newborn babies of HIV+ve women	-	-	103.9	107.3	96.4	40	102.3
	Nevirapine uptake rate among pregnant HIV+ve women	-	-	55.6	59.1	60.5	37	76.1
Utilisation rate	3.0	3.1	3.2	3.1	3.1	8	2.2	
Outcome	Incidence of STI treated - new	2.5	2.7	3.5	3.3	3.2	18	4.4
	TB cure rate (2004 - 2006)	73.4	84.5	83.6	83.1		1	62.7
	TB smear conversion rate (2004 - 2007)	36.0	63.1	63.5	73.6	87.5	1	60.5
	TB case load (new Sm+)	-	-	-	-	817		135 604
	Diarrhoea incidence under 5 years	61.0	65.8	74.0	218.7	302.5	33	254.0
	Not gaining weight under 5 years rate	1.1	0.8	0.9	1.7	1.6	36	1.3
	Delivery rate in facility	65.2	64.9	61.9	67.1	69.0	37	80.6
Impact	Stillbirth rate	18.3	13.0	17.1	15.6	13.2	1	23.0
	Perinatal mortality rate in facility	21.8	20.1	25.2	19.6	18.7	2	31.1

Number of health facilities and beds	Clinic	CHCs	Mobile Service	District Hospital	Regional Hospital	Provincial Tertiary Hospital	Central Hospital	Specialised Hospital	Private Hospitals	Beds
Public sector facilities (2007) and beds (2005)	31	1	14	5	0	0	0	0		193
Private sector facilities and beds (2008)									1	45

Western Cape



The West Coast district has a population of nearly 300 000 people and is ranked among the least deprived districts in SA. Close on 25% of the population had access to a medical aid scheme in 2007. West Coast spent 44.7% of district health expenditure on its eight district hospitals and had a bed utilisation rate of approximately 69% in 2007/08. The average length of stay remained fairly constant at 2.5 days, while the cost per PDE continued its upward trend since 2005/06 to R1152 in 2007/08.

DCI West Coast Municipality

The district had the 3rd highest PHC expenditure in the country of R466 per capita in 2007/08. The utilisation rate remained high at 3.6 visits per person over the last two years and the nurse clinical workload was stable at around 34.2 patients per nurse per day. For a second year in a row, the low rate of clinic supervision of below 30% was unsatisfactory and insufficient to improve quality of PHC.

The TB cure rate improved to 75.3% in 2006 and the smear conversion rate improved from 51.4% in 2005 to 63.4% in 2007. The data surrounding the antenatal clients HIV testing rate, suggest that more women were tested than the number attending their first ANC visit, and needs investigation. The HIV prevalence in 2007/08 of 10.2% (antenatal survey) was the 2nd lowest in SA. However, the nevirapine uptake rate for HIV+ve pregnant mothers of 60.6% indicated a need for greater effort in this important HIV prevention programme, although the uptake rate of newborns was good at 99%.

The male condom distribution rate improved significantly by 10.4 more condoms per male per year in 2007/08 compared to 2003/04, while the incidence of STIs treated dropped to a low of 2.6% over the same period. The Caesarean section rate, lowest in the province, increased to 11.3% in 2007/08 and 89% of women delivered in a facility. The stillbirth and perinatal mortality rates have shown a slight downward trend over the last 8 years, although there is a fair amount of uncertainty in the data at district level due to small numbers.

The immunisation coverage remained over 100%, possibly due to inaccuracies in the number of children under one year of age which forms the denominator for the indicator. The drop out rate decreased to 1.3 in 2007/08.

DC1 West Coast District Municipality		Year					District Rank (1=best)	National value
		2003/04	2004/05	2005/06	2006/07	2007/08	most recent	most recent
Demographic and socio-economic	Population total			271 408	278 199	285 099		47 844 347
	Medical aid coverage (%)			24.1	21.8	24.8	2	14.3
	Access to piped water (%) - (2005-06 GHS, 2007 Comm. Survey)			97.9	98.6	98.7	4	85.8
	Deprivation index - (high value = most deprived)			1.00	0.83	0.88	1	
	Socio-economic quintile - (1=poor, 5=best)			5	5	5		
Input	Non-hospital PHC expenditure per capita - (real 2007/08 prices)			420	498	466	3	302
	% District health services expenditure on District Management			5.2	4.8	4.2		5.1
	% District health services expenditure on District Hospitals			44.7	41.9	44.7		42.7
	Cost per PDE			768	992	1 152		1128
Process	Nurse clinical workload		-	-	34.8	34.2	10	23.7
	Average length of stay (ALOS)	2.6	2.5	2.5	2.4	2.5	5	4.4
	Bed utilisation rate (BUR)	63.3	65.4	67.3	67.9	68.9	18	65.3
	Clinic supervision rate	-	-	-	22.6	26.7	46	48.2
Output	Male condom distribution rate	3.9	6.0	6.5	8.3	14.3	7	11.8
	Immunisation coverage < 1 year	92.7	100.7	103.0	113.6	101.4	6	84.2
	Immunisation drop out rate (DTP1-3)	1.7	4.6	4.3	3.3	1.3	15	3.4
	Caesarean section rate	9.5	9.7	9.8	9.1	11.3		15.6
	Proportion ANC clients tested for HIV	-	-	88.5	95.6	113.0	2	79.6
	HIV prevalence among ANC clients tested (DHIS)	-	-	6.5	6.5	6.9	3	24.4
	HIV prevalence among ANC clients tested (survey)	-	-	-	7.3 (4.0 -10.7)	10.2 (6.4 -15.2)	2	28.3
	Nevirapine uptake rate among newborn babies of HIV+ve women	-	-	109.8	102.2	99.0	29	102.3
	Nevirapine uptake rate among pregnant HIV+ve women	-	-	67.7	63.5	60.6	36	76.1
	Utilisation rate	3.3	3.4	3.5	3.6	3.6	4	2.2
Outcome	Incidence of STI treated - new	2.7	3.3	3.1	2.7	2.6	10	4.4
	TB cure rate (2004 - 2006)	72.4	74.7	73.0	75.3		8	62.7
	TB smear conversion rate (2004 - 2007)	39.0	52.2	51.4	59.0	63.4	24	60.5
	TB case load (new Sm+)	-	-	-	-	1 421		135 604
	Diarrhoea incidence under 5 years	61.1	68.6	67.3	261.3	353.9	40	254.0
	Not gaining weight under 5 years rate	0.5	0.6	0.4	1.0	0.6	5	1.3
	Delivery rate in facility	87.0	91.9	92.8	95.2	89.0	10	80.6
Impact	Stillbirth rate	23.9	24.4	19.7	21.1	19.8	14	23.0
	Perinatal mortality rate in facility	32.5	34.0	27.5	29.3	24.3	7	31.1

Number of health facilities and beds	Clinic	CHCs	Mobile Service	District Hospital	Regional Hospital	Provincial Tertiary Hospital	Central Hospital	Specialised Hospital	Private Hospitals	Beds
Public sector facilities (2007) and beds (2005)	27	2	24	8	0	0	0	1		405
Private sector facilities and beds (2008)									1	46