

11 South Africa

Naomi Massyn

South Africa had an estimated population of 50.8 million people in 2011. The population density, age and gender structure vary dramatically across districts in the country. Only 16.9% of people belonged to a medical aid scheme.

Provincial and local government expenditure on district health services per capita (uninsured) has increased over eight years in real terms^a from R659 in 2004/05 to R1 327 in 2012/13. Gauteng (GP) at R1 199 and Free State (FS) at R1 207 have the lowest expenditure per capita. KwaZulu-Natal (KZN) at R1 301 and North West Province (NW) at R1 247 also fall below the national average. Limpopo (LP) spent the most per capita (R1 501).

Provincial primary health care (PHC) expenditure per capita (uninsured), in real terms, increased nationally over eight years from R324 in 2004/05 to R780 in 2012/13. Provincially, Gauteng had the highest expenditure per capita at R928, and Mpumalanga (MP) had the lowest at R643.

The expenditure per PHC headcount has increased nationally in real terms over eight years from R132 in 2004/05 to R255 in 2012/13. Limpopo spent the lowest per headcount (R221) and the Gauteng the highest (R335).

The national proportion of district health services expenditure on district management varied between a low of 4.8% in 2005/06 and the current high of 5.8% in 2012/13. A wide variation of expenditure on district management exists between the provinces. The provinces with the lowest percentage expenditure are KwaZulu-Natal (2.1%), Free State (3.5%) and Western Cape (WC) (4.8%). The provinces with the highest percentage are Mpumalanga (8.7%), Northern Cape (NC) (9.3%) and North West (9.5%).

The national average for the proportion of district health services expenditure on district hospitals is 37.5%. Provincially, the spending ranged from 20.7% (Gauteng) to 49.4% (Limpopo).

The national proportion of district health services expenditure on non-hospital PHC is 56.7%. Provincially, the spending ranged from 43.3% (Limpopo) to 73.2% (Gauteng).

The PHC supervisor visit rate (fixed clinic/CHC/CDC) average for South Africa was 76%, representing a small increase of 1.9 percentage points from the average in 2011/12. Of the 52 districts, 29 were above the national average, with 26 of these achieving the national target of 80%. Seven districts recorded 50% and lower, four of which were in KwaZulu-Natal.

The South African average length of stay (ALOS) was 4.2 days. At district level, Frances Baard (NC) has the shortest ALOS (1.1 days) followed by Xhariep (FS) (2.1 days). In contrast, both Uthungulu and iLembe districts in KwaZulu-Natal had the longest ALOS (6.8 days), followed by Buffalo City (6.3 days) in the Eastern Cape (EC).

The SA average for the bed utilisation rate (BUR) has been about 65% over the last five years, with a low of 64.7% in 2010/11 and a high of 68.0% in 2008/09. The 2012/13 BUR is 67.3%, which is a minimal increase from 67.2% in 2011/12. The highest BUR was 94.3% for the City of Cape Town (WC) and the lowest was Frances Baard (NC) at 43.6%.

In 2012/13, the average expenditure per patient day equivalent (PDE) in South Africa for all district hospitals was R1 823, which is higher than the 2011/12 value of R1 740. Gauteng districts had high values on the whole, and the Western Cape (apart from the City of Cape Town) showed a low expenditure per PDE.

The 2012/13 value for the ratio of ambulatory to inpatient days was 1.3. A ratio below 1 means that fewer clients were seen at the emergency unit/OPD clinics than were admitted into hospital, whereas a ratio above 1 means that more clients were seen at the emergency unit/OPD clinics than were admitted into hospital. The highest ratio (7.9) was in Amajuba District (KZN) which is a clear outlier and further investigation of the single hospital in the district is required. The lowest ratios were found in the districts of JT Gaetsewe (NC) at 0.5 and in Nelson Mandela Bay (EC) at 0.6.

The average national OPD new client not referred rate was 64.1%. At district level, the highest rate was in Frances Baard (NC) with 94.9% and the lowest was in Dr Kenneth Kaunda (NW) with 6.1%. There are no distinct provincial patterns. There are no values for the Western Cape for the ratio of ambulatory to inpatient days.

Overall, the proportion of under-18 deliveries in facilities is declining, having steadily dropped from 9.2% in 2007/08 to 7.7% in 2012/13. Provincially, the highest proportion of 2012/13 under-18 deliveries was in the Eastern Cape (10.3%) and the lowest was in Gauteng (4.8%). With the exception of the Northern Cape, which reports a slight increase to 10.2%, the rates are stable or declining. An overview of annual trends for the provinces shows that in Gauteng, there is a strong downward trend. This is less marked in the other provinces, where certain districts show fluctuating trends.

The national Caesarean section rate has increased steadily from 12.7% in 2001/02 to 20.8% in 2012/13. Considerable variation exists between the provinces, with Caesarean section rates ranging from 13.3% in the Northern Cape to 27.0% in KwaZulu-Natal. The Northern Cape showed a decrease from 13.7 to 13.3% in contrast to the rest of the provinces where the rate increased.

a i.e. adjusted for inflation and reported in 2012/13 prices.

The stillbirth rate for SA was 21.8 per 1 000 births, representing a slight decrease from the 2011/12 rate of 22.5. This is the lowest rate since 2001/02. The greatest decline was in the Free State (from 29.1 to 25.1). The rate increased in Limpopo, Mpumalanga and the Northern Cape, with the latter having the highest rate overall at 25.3.

The antenatal care coverage before 20 weeks in SA has been far from optimal, although this has increased steadily from 31.4% in 2007/08 to 44.0% in 2012/13.

The 2011 National Antenatal Sero-prevalence Survey and the District Health Information System data on antenatal clients who were known to be HIV-positive at their first antenatal visit are used to report HIV prevalence among antenatal clients. The national average for facility antenatal HIV prevalence from the DHIS in 2012/13 was 27.3%, which is slightly lower than the 2011 Antenatal Survey finding of 29.5%. The national average for antenatal client initiated on ART in 2012/13 was 81.6%. Only 19 districts have reached the target of 85% set by the NDoH.

The national early infant diagnosis (EID) coverage during 2012/13, using National Health Laboratory Services (NHLS) data, was 73.9%, ranging from 61.1% in North West Province to 86.7% in Gauteng. Gauteng has had the highest EID coverage of all provinces for the past three years. KwaZulu-Natal had the second highest EID coverage in 2012/13 (78.6%).

The NHLS data for early mother-to-child transmission (MTCT) of HIV was 2.4% in 2012/13. The Western Cape was the best performing province with an early transmission rate below 2.0% in all six districts. All districts in Gauteng, KwaZulu-Natal, Mpumalanga and North West provinces achieved early vertical transmission rates below the target of 3.0%. The DHIS data for early MTCT was 2.5% during 2012/13.

The immunisation coverage in the country for 2012/13 was 94.0%, which is fairly similar to the 2011/12 level of 95.2%. The coverage in 2012/13 differs between the provinces, ranging from 82.6% in the Eastern Cape and 83.0% in Mpumalanga to 107.9% in Gauteng.

The national measles 1st to 2nd drop-out rate for 2012/13 was 17.0%, an increase from 2011/12 when it was 15.4%. Of concern is that the drop-out rate has been increasing since 2009/10 when it was 8.9%. It is difficult to determine whether this is due to variable service delivery or poor data quality, or a combination of both factors. From a provincial perspective, the drop-out rate ranges from a low of 10.4% in KwaZulu-Natal to a high of 23.1% in the Western Cape.

The annual vitamin A coverage in 2012/13 declined to 42.8% from the 2011/12 level of 43.4%. The national average remains slightly above the 2012/13 target of 42%. The variation in coverage among provinces ranged from a low of 35.8% in the North West to a high of 49.9% in the Free State.

In 2012/13, the average incidence of diarrhoea with dehydration in children under 5 years in South Africa was 12.0 episodes per 1 000 children under five years. This was lower than the 2011/12 figure of 14.0 episodes and continued the downward trend evident since a peak incidence of 21.1 episodes per 1 000 children in 2009/10. The provincial incidence varied from a low of 7.7 episodes in North West to a high of 16.8 episodes in the Western Cape. Only the Free State and Northern Cape provinces had an increase in incidence from 2011/12.

The average case fatality rate for diarrhoea with dehydration in children under five years in SA was 4.3% in 2012/13. This rate reflects a sustained trend of decrease since 2007/08 when the rate was 8.9%. The diarrhoea case fatality rate declined in seven provinces; in KwaZulu-Natal, it was static at 4.3%, and in the North West Province it increased by 0.9 percentage points from 4.9% in 2011/12 to 5.8% in 2012/13. There was a weak negative correlation between the incidence of diarrhoea and the case fatality rates for diarrhoea in children under five years.

The average incidence of pneumonia in children under 5 years in the country was 66.8 cases per 1 000 children under 5 years in 2012/13, which continued the downward trend from a peak incidence of 97.4 cases per 1 000 children under 5 years in 2009. The provincial incidence varied from a low of 30.8 cases in Mpumalanga, to a high of 119.0 cases in KwaZulu-Natal. All provinces showed a decline in incidence. There is little correlation between pneumococcal conjugate vaccine (PCV) coverage rates and the incidence of pneumonia in children under five years.

In 2012/13, the average case fatality rate for pneumonia in children under 5 years in SA was 3.8%, which continued the downward trend evident since 2009/10 when it was 6.6%. Whilst no data are available for the Western Cape for 2012/13, the national figure spans a range from 2.3% in Gauteng to 5.3% in Mpumalanga. Although the pneumonia case fatality rate declined in six provinces, it increased by 1.6 percentage points in the Northern Cape, from 2.8% in 2011/12 to 4.4% in 2012/13. The greatest decline occurred in the Free State, where it fell by 7.1 percentage points from 10.6% in 2010/11 to 3.5% in 2012/13. Four provinces, the Eastern Cape, Gauteng, KwaZulu-Natal and Limpopo, have experienced a reduction in the pneumonia case fatality rate every year since 2009/10.

The average incidence of severe acute malnutrition in children under 5 years in South Africa was 4.4 cases per 1 000 children under 5 years which, although up from the 2011/12 incidence of 4.3 cases per 1 000 children under 5 years, remains below the 2009/10 rate of 5.5. The incidence of severe acute malnutrition in the provinces ranged from a low of 2.5 cases in Gauteng to 7.2 cases in the Northern Cape. In Limpopo, the 2012/13 incidence continued the upward trend presented since 2009/10, when incidence of severe acute malnutrition measured 4.0 cases per 1 000 children under 5 years. Three other

provinces, the Eastern Cape, Mpumalanga and the Northern Cape, also had an increased incidence in 2012/13, reversing the falling trend evident in these provinces since 2009/10.

The average case fatality rate for severe acute malnutrition in children under 5 years in South Africa for the 2012/13 period was 12.7%. This was down from the previous year's rate of 13.3%, which continued the descending trend from 19.3% in 2009/10. The provincial figures for the 2012/13 period, excluding those for the Western Cape (for which no data are available), ranged between 8.4% in the Northern Cape and 18.5% in Limpopo. The case fatality rate rose in two provinces and fell in six provinces. The greatest fall, from 28.9% to 8.4%, occurred in the Northern Cape since 2009/10.

Overall, the couple year protection rate in SA has been low but has increased from 26.3 in 2002/03 to 37.8% in 2012/13. After being fairly static for a number of years, the couple year protection rate increased in all provinces from 2011/12 to 2012/13. The greatest increases were seen in the Western Cape, where the rate increased by 11.9 percentage points to 70.2%, and in KwaZulu-Natal, where it increased by 10.4 percentage points to 37.5%. The Western Cape is the best-performing province, with all six districts in the top nine districts nationally. The Western Cape couple year protection rate is 1.7-fold higher than the next highest province, which is Limpopo. The increase in the Eastern Cape was negligible from 31.2% to 31.3%. Gauteng Province is now the poorest-performing province, with the couple year protection rate at 28.3%.

The cervical screening rate in SA in 2012/13 was 55.4%, a marginal increase from 55.0% in 2011/12. This exceeds the NDoH target for cervical cancer screening coverage of 54%, as shown in the NDoH Annual Performance Plan for 2012/13. The increase in cervical screening coverage in KwaZulu-Natal over the past few years has continued to improve from 77.1% in 2011/12 to 81.8% in 2012/13. KZN remains the best-performing province. The Free State showed a substantial increase from 44.2% to 51.0%. The Eastern Cape showed a marginal increase (from 37.8% to 38.8%) as did the North West (from 48.8% to 49.0%). The rate has declined over the past two financial years since 2010/11 in Gauteng, Mpumalanga, Northern Cape and the Western Cape.

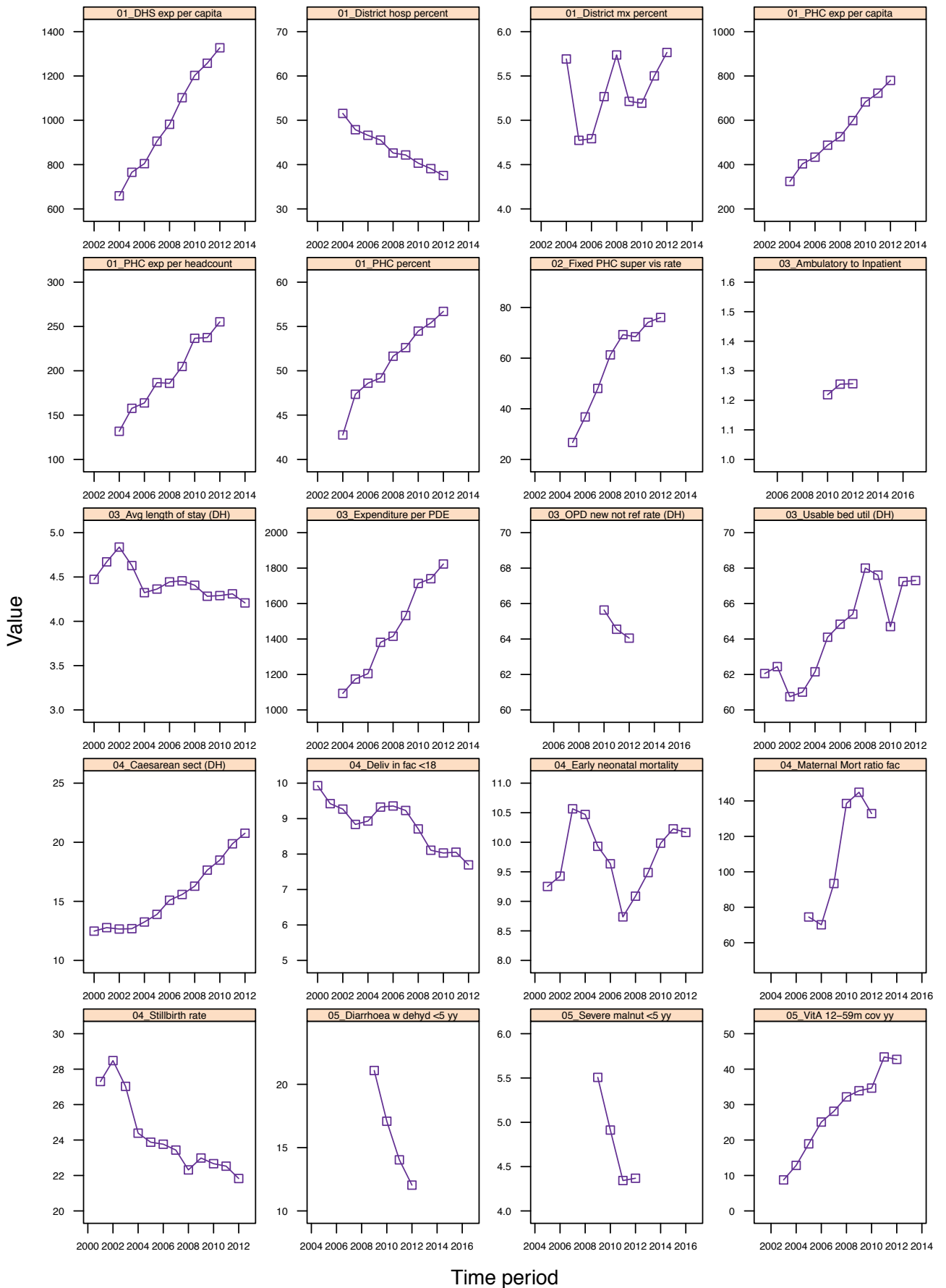
During 2012, a total of 349 594 cases of TB (all types) were recorded in the Electronic TB Register (ETR.Net). Of these, 119 901 were classified as new pulmonary TB smear-positive cases. The average case finding index for South Africa is 2.4%, varying from a high of 3.6% in the Eastern Cape to lows of 1.9% in Limpopo and 1.7% in Mpumalanga and the Western Cape. In 2012, the incidence rate (all TB) was 687.3 per 100 000 people. The average TB treatment success rate for the country has steadily improved from 68.8% in 2007 to 75.4% in 2011.

At a provincial level, the TB successful treatment rate (all TB) varied from highs of 81.5% in the Western Cape and 80.7% in Gauteng, to lows of 65.7% in Limpopo and 67.8% in the North West. The cure rate for new pulmonary smear-positive TB patients has increased over the last six years from 61.6% in 2006 to 74.2% in 2011. The cure rate in all provinces improved over the last year, except in the Northern Cape where the rate dropped from 70.7% in 2010 to 68.3% in 2011. The national TB defaulter rate (new pulmonary smear-positive) for 2011 was 6.1%, just short of the 6.0% target, and has declined from 7.1% in 2009 and 6.8% in 2010. In four provinces in particular – Gauteng, KwaZulu-Natal, Limpopo and Mpumalanga – the defaulter rate has improved over the last year.

The total number of condoms distributed through health facilities in South Africa was approximately 387 million in 2012/13, compared to the 272 million distributed in 2011/12. This represents an increase of about 40%. On average, 22.1 male condoms were distributed per male 15 years and older in 2012/13. This is almost four-and-a-half times that of the base rate of 4.6 in 2000/01. The Western Cape had the largest condom distribution rate of 56.1 per male, which was an almost 20% increase from the 2011/12 rate of 45.7. The provinces with the lowest condom distribution rates were the Northern Cape and Gauteng with average rates of 8.0 and 10.3 respectively. KwaZulu-Natal and North West provinces reported the most significant increases, from 11.1 and 6.0 in 2011/12 to 25.9 and 17.7 in 2012/13 respectively.

The total number of South African adults who had remained on ART at the end of the month increased by about 33%, from 1 439 445 in 2011/12 to 2 161 170 in 2012/13. All provinces demonstrated an increase. Mpumalanga reported an increase of more than 50%, from 127 458 in 2011/12 to 199 538 in 2012/13. Of all the provinces in SA, Gauteng made the most notable progress and has increased the number of adults on ARVs by more than 100%, with 505 644 adults in 2012/13 compared to 246 295 in 2011/12. The Northern Cape had the lowest number of adults on ARVs, which is in line with their low prevalence rate and small population, but still showed an increase from 17 348 in 2011/12 to 23 377 in 2012/13. The total number of children under the age of 15 who remained on antiretroviral treatment at the end of 2012/13 was 148 342. KwaZulu-Natal and Gauteng had the most children on ART, as a result of their large populations and high HIV prevalence.

Figure 1: Annual indicators for South Africa



Section B: Profile South Africa

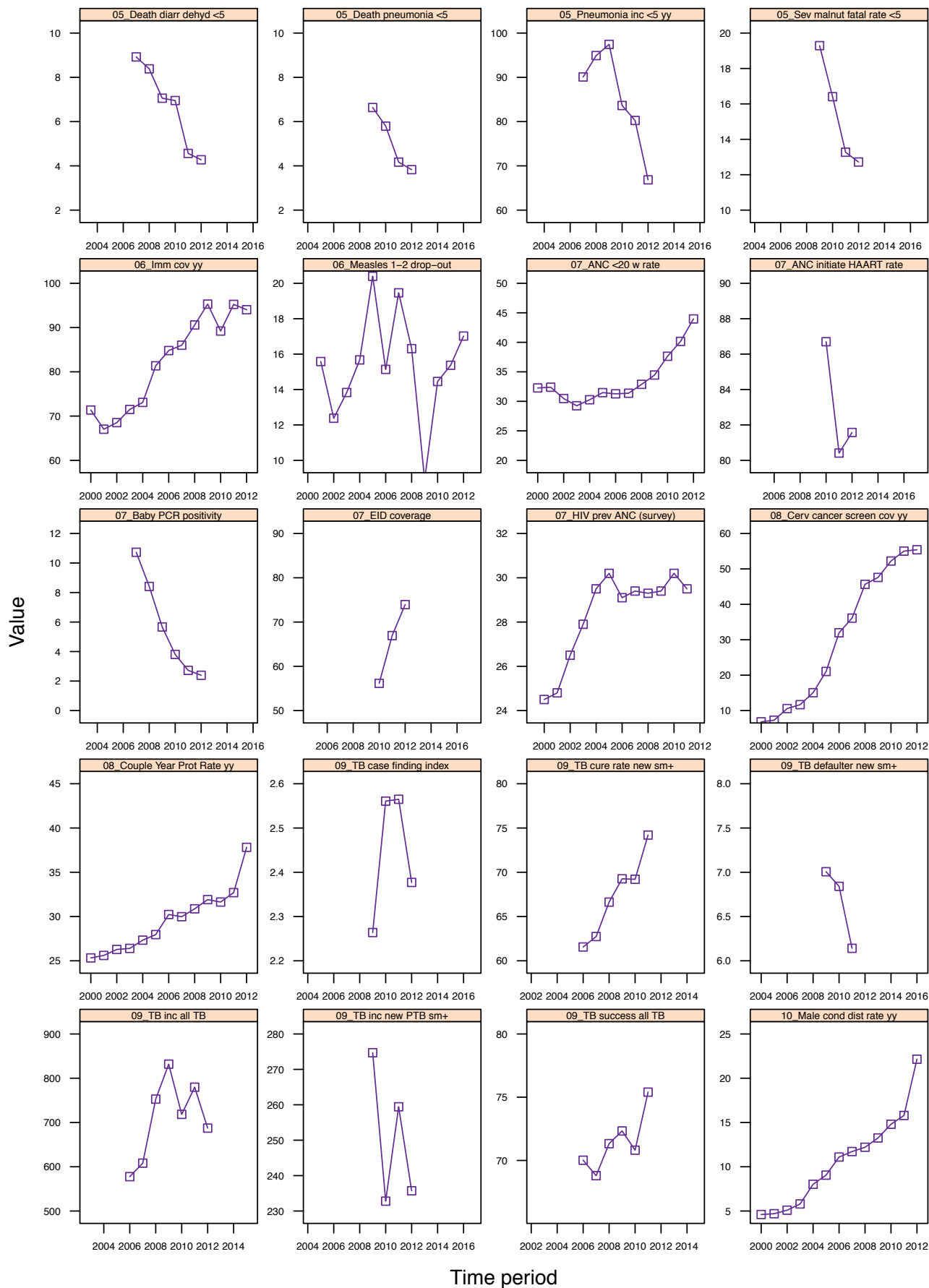
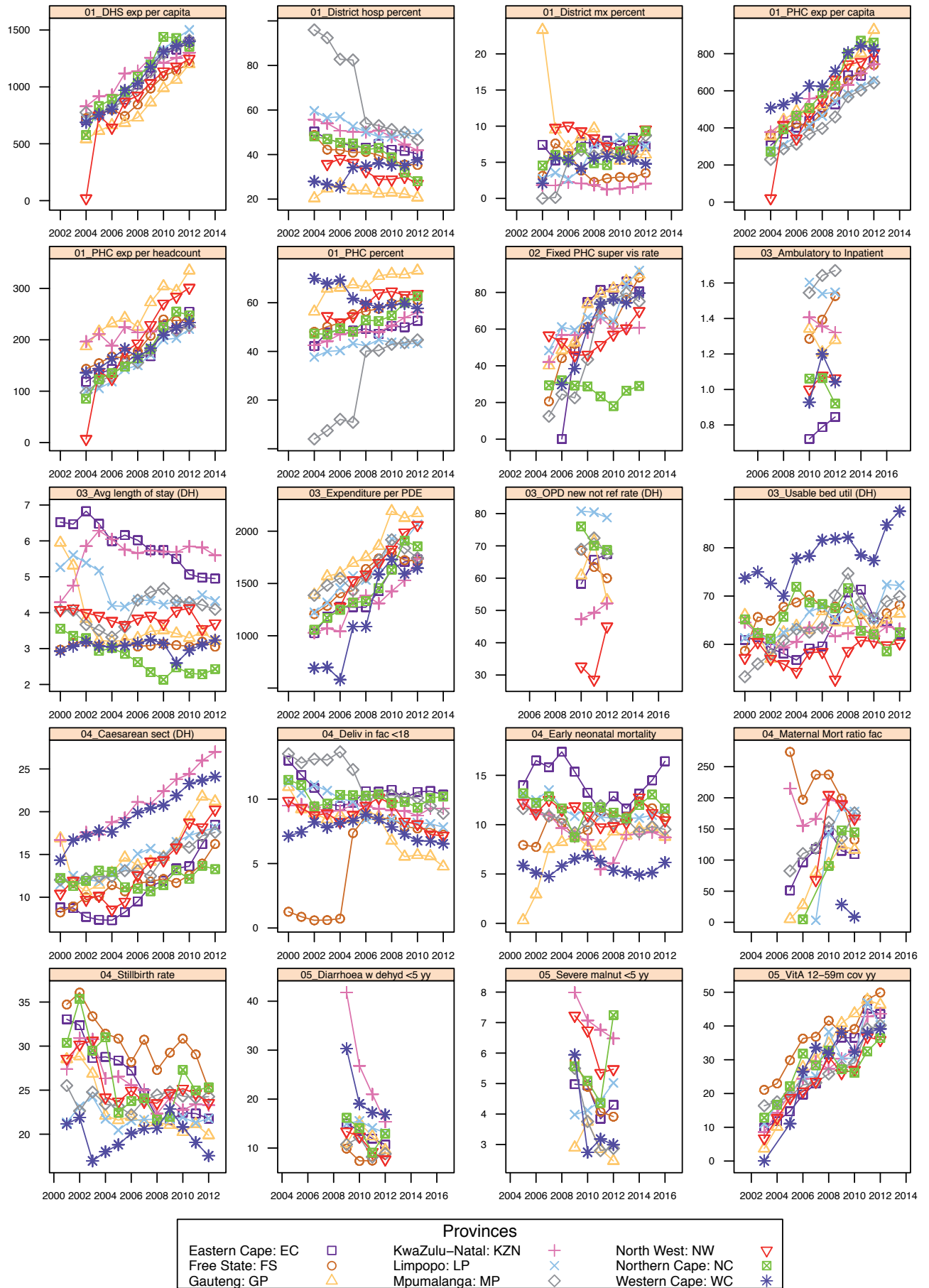
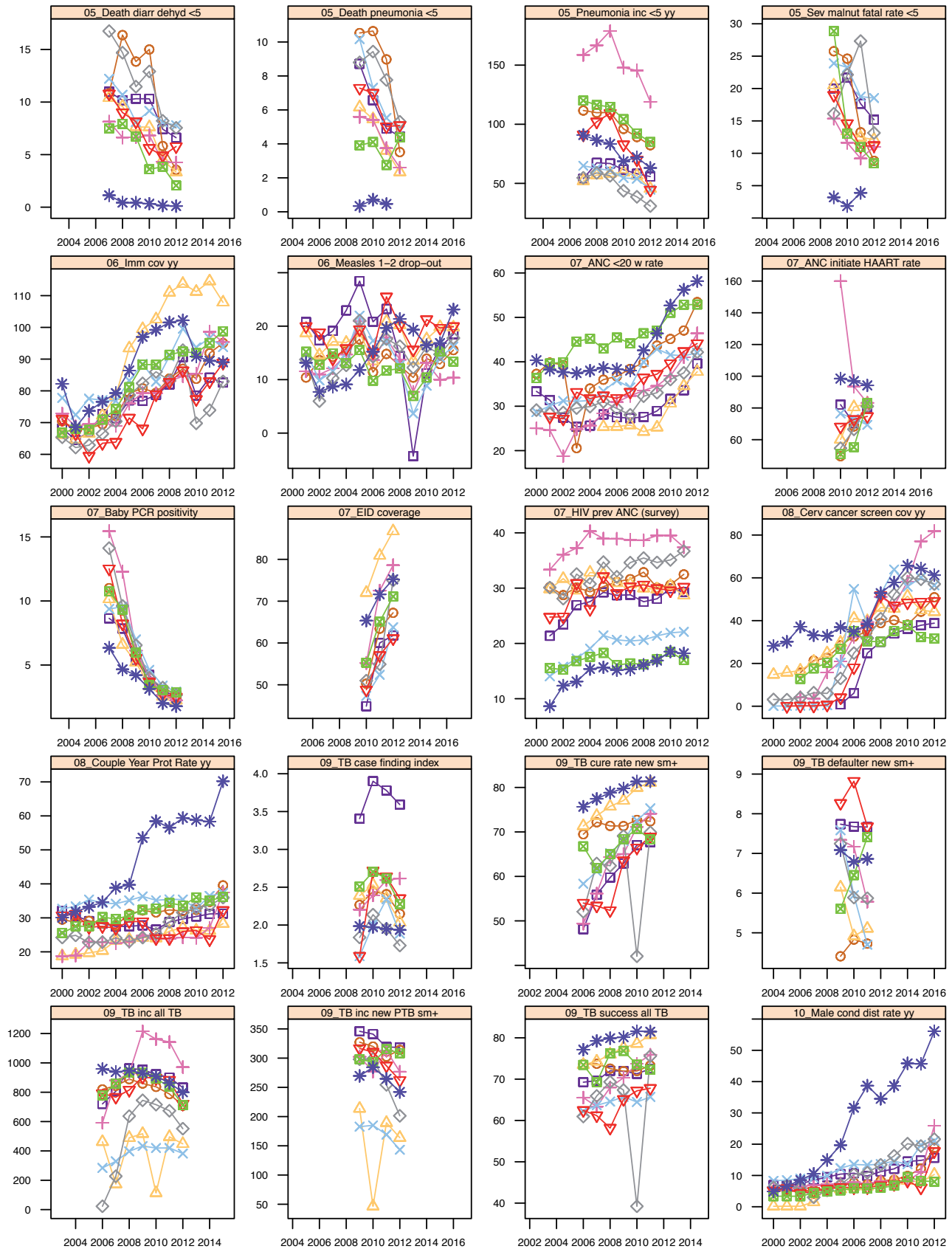
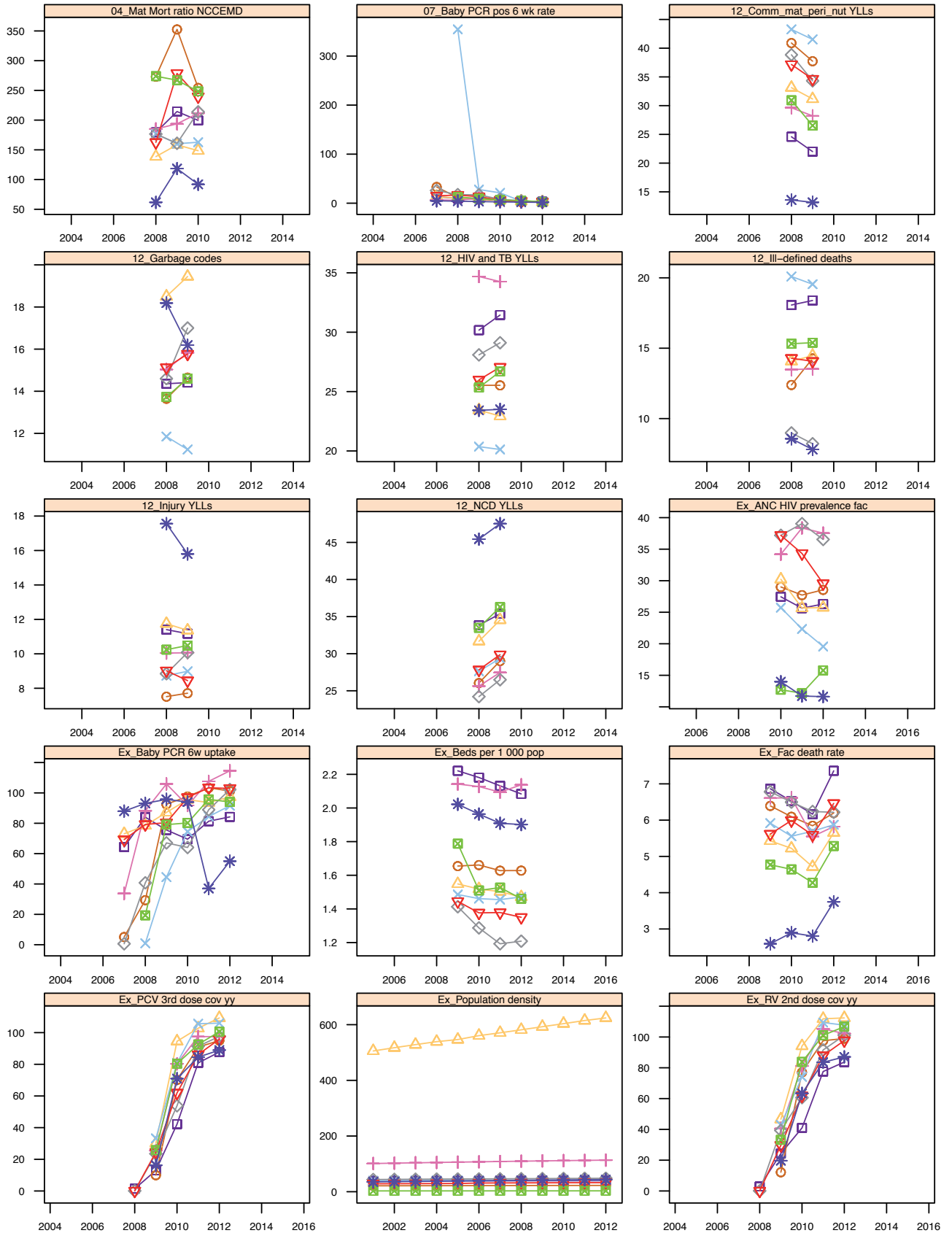


Figure 2: Annual indicators for provinces



Section B: Profile South Africa





Section B: Profile South Africa
Table 1: Provincial pages, 2012/13

| | | Province page: EC, Eastern Cape | | | | | | | | | | | |
|--------------------------|--|---|------|---------|---------|---------|---------|---------|----------|-------------|-------------|-----------|------|
| Category | Indic | Year of IndYear | | | | | | | | | | | |
| | | 2002 | 2003 | 2004 | 2005 | 2006 | 2007 | 2008 | 2009 | 2010 | 2011 | 2012 | 2013 |
| 01_Finance | Percentage of DHS expenditure on district hospitals | | | 50.4 | 47.0 | 45.4 | 43.7 | 43.1 | 44.8 | 42.2 | 41.7 | 40.2 | |
| | Percentage of DHS expenditure on district management | | | 7.4 | 5.3 | 5.9 | 7.8 | 7.6 | 8.0 | 7.3 | 8.4 | 7.2 | |
| | Percentage of DHS expenditure on PHC | | | 42.2 | 47.7 | 48.7 | 48.5 | 49.3 | 47.3 | 50.5 | 49.9 | 52.6 | |
| | Provincial and LG expenditure on District Health Services per capita (uninsured) | | | 707.0 | 751.0 | 808.0 | 888.0 | 1,020.0 | 1,098.0 | 1,296.0 | 1,327.0 | 1,396.0 | |
| | Provincial expenditure per PHC headcount | | | 118.2 | 134.2 | 143.1 | 156.1 | 171.0 | 168.1 | 228.4 | 220.0 | 254.7 | |
| | Provincial PHC expenditure per capita (uninsured) | | | 306.0 | 369.0 | 402.0 | 437.0 | 509.0 | 527.0 | 684.0 | 682.0 | 764.0 | |
| 02_Management PHC | PHC supervisor visit rate (fixed clinic/CHC/CDC) | | | | | 0.1 | 48.8 | 74.8 | 81.4 | 81.9 | 85.9 | 80.5 | |
| 03_Management Inpatients | Average length of stay (District Hospitals) | 6.8 | 6.5 | 6.0 | 6.2 | 6.0 | 5.7 | 5.7 | 5.5 | 5.1 | 5.0 | 5.0 | |
| | Expenditure per patient day equivalent (District Hospitals) | | | 1,024.0 | 1,181.0 | 1,277.0 | 1,273.0 | 1,273.0 | 1,427.0 | 1,636.0 | 1,706.0 | 1,730.0 | |
| | Inpatient bed utilisation rate (District Hospitals) | 59.2 | 58.1 | 56.8 | 59.2 | 59.6 | 65.0 | 70.7 | 71.3 | 65.6 | 64.7 | 62.1 | |
| | OPD new client not referred rate (District Hospitals) | | | | | | | | | 58.3 | 65.7 | 67.4 | |
| | Ratio Ambulatory to Inpatient days (District Hospitals) | | | | | | | | | 0.7 | 0.8 | 0.9 | |
| 04_Delivery | Caesarean section rate (District Hospitals) | 7.7 | 7.4 | 7.3 | 8.3 | 9.5 | 11.3 | 11.9 | 13.4 | 13.6 | 16.2 | 18.5 | |
| | Delivery in facility under 18 years rate | 10.9 | 9.6 | 9.5 | 9.7 | 10.6 | 10.6 | 10.7 | 10.1 | 10.6 | 10.6 | 10.3 | |
| | Inpatient early neonatal death rate | 16.5 | 15.8 | 17.4 | 15.4 | 13.2 | 11.4 | 12.9 | 11.6 | 13.2 | 14.5 | 16.4 | |
| | Maternal mortality in facility ratio | | | | | | 51.2 | 96.4 | 117.8 | 147.9 | 114.9 | 109.5 | |
| | Maternal mortality ratio institutional | | | | | | | 179.4 | 214.5 | 199.5 | | | |
| | Stillbirth rate in facility | 32.4 | 28.6 | 28.8 | 28.4 | 27.2 | 24.6 | 21.9 | 21.6 | 22.4 | 22.3 | 21.8 | |
| 05_Child Health | Child under 5 years diarrhoea case fatality rate | | | | | | 11.0 | 10.2 | 10.3 | 10.3 | 7.4 | 6.6 | |
| | Child under 5 years diarrhoea with dehydration incidence | | | | | | | | 15.0 | 13.5 | 11.9 | 10.7 | |
| | Child under 5 years pneumonia case fatality rate | | | | | | | | 8.7 | 6.6 | 4.9 | 4.4 | |
| | Child under 5 years pneumonia incidence | | | | | | 53.9 | 67.4 | 66.8 | 61.6 | 58.2 | 55.7 | |
| | Child under 5 years severe acute malnutrition case fatality rate | | | | | | | | 20.0 | 21.7 | 17.7 | 15.2 | |
| | Child under 5 years severe acute malnutrition incidence | | | | | | | | 5.0 | 4.9 | 3.8 | 4.3 | |
| | Vitamin A coverage 12 to 59 months | | 9.9 | 11.8 | 14.7 | 19.7 | 23.0 | 31.6 | 36.6 | 36.5 | 45.1 | 43.6 | |
| 06_Immunisation | Immunisation coverage under 1 year | 67.0 | 72.7 | 71.3 | 77.0 | 76.8 | 78.7 | 82.0 | 90.6 | 78.5 | 84.2 | 82.6 | |
| | Immunisation coverage under 1 year - adjusted | | | | | | | | | | 76.7 | | |
| | Measles 1st to 2nd drop-out rate | 17.3 | 19.1 | 22.9 | 28.4 | 20.8 | 23.2 | 14.4 | -4.3 | 11.2 | 16.0 | 18.5 | |
| 07_PMTCT | Antenatal client initiated on ART rate | | | | | | | | | 82.1 | 70.4 | 80.5 | |
| | Antenatal visits before 20 weeks rate | 27.4 | 25.4 | 25.6 | 28.1 | 27.5 | 27.3 | 27.6 | 28.9 | 31.7 | 33.6 | 39.6 | |
| | Early Infant HIV diagnosis coverage | | | | | | | | | 44.9 | 60.0 | 61.8 | |
| | HIV prevalence among antenatal clients (survey) | 23.4 | 26.9 | 27.6 | 29.2 | 28.7 | 28.8 | 27.5 | 28.1 | 29.9 | 29.3 | | |
| | Infant 1st PCR test positive around 6 weeks rat | | | | | | 13.1 | 9.8 | 9.7 | 6.7 | 3.9 | 3.0 | |
| | Percentage PCR tests under 2 months positive | | | | | 8.6 | 7.8 | 5.4 | 4.2 | 2.9 | 2.6 | | |
| 08_Reproductive health | Cervical cancer screening coverage (annualised) | | | 0.8 | 6.1 | 24.8 | 30.1 | 34.0 | 36.2 | 37.8 | 38.8 | | |
| | Couple year protection rate (annualised) | 29.1 | 28.3 | 27.5 | 27.5 | 27.8 | 26.6 | 28.8 | 29.7 | 30.4 | 31.2 | 31.3 | |
| 09_TB_CF | Incidence (diagnosed cases) of TB - all types | | | | | 721.0 | 807.0 | 963.0 | 953.0 | 922.0 | 900.0 | 832.0 | |
| | Incidence (diagnosed cases) of TB - new PTB sm+ | | | | | | | | 345.9 | 341.1 | 319.1 | 318.3 | |
| | Number of TB cases reported (new PTB sm+) | | | | | | | | 23,000.0 | 22,706.0 | 21,236.0 | 21,234.0 | |
| | TB case finding index | | | | | | | | 3.4 | 3.9 | 3.8 | 3.6 | |
| 09_TB_TO | TB cure rate (new sm+) | | | | | 48.1 | 55.9 | 59.7 | 62.9 | 67.0 | 67.7 | | |
| | TB defaulter rate (new sm+) | | | | | | | | 7.7 | 7.7 | 7.7 | | |
| | TB successful treatment rate (all TB) | | | | | 69.3 | 69.6 | 72.0 | 71.9 | 71.3 | 72.5 | | |
| 10_HIV | Adult remaining on ART at end of the month - total | | | | | | | | | 148,997.0 | 176,590.0 | 222,107.0 | |
| | Child under 15 years remaining on ART at end of the month - total | | | | | | | | | 9,729.0 | 11,954.0 | 15,765.0 | |
| | Male condom distribution rate | 7.3 | 8.5 | 9.5 | 10.4 | 10.7 | 9.8 | 11.2 | 12.1 | 14.5 | 14.8 | 15.7 | |
| 11_Socio-demogr.. | Adults (18-65) no secondary schooling | | | | | | | | | | 29.4 | | |
| | Medical scheme coverage (ave) | | | | | | | | 11.4 | | | | |
| | Percentage of people without piped water in dwelling or within 200m | | | | | | | | | | 36.6 | | |
| 12_Burden of disease | Percentage of deaths garbage codes | | | | | | | | 14.4 | 14.4 | | | |
| | Percentage of deaths ill-defined | | | | | | | | 18.1 | 18.4 | | | |
| | Percentage of Years of Life Lost (YLL) due to HIV and TB | | | | | | | | 30.2 | 31.4 | | | |
| | Percentage of Years of Life Lost (YLL) due to injuries | | | | | | | | 11.4 | 11.2 | | | |
| | Percentage of Years of Life Lost (YLL) due to non-communicable diseases | | | | | | | | 33.8 | 35.4 | | | |
| | Percentage of YLLs due to communicable, maternal, perinatal, nutrition causes | | | | | | | | 24.6 | 22.0 | | | |
| | Extra | Antenatal client HIV prevalence in facility | | | | | | | | | 27.4 | 25.6 | 26.3 |
| | Area (km2) | | | | | | | | | | 168,966.0 | | |
| | Baby initiated on HAART under 18 months rate | | | | | | | | | 40.8 | 35.9 | | |
| | Baby PCR test around 6 weeks uptake rate | | | | | | 64.3 | 84.0 | 75.6 | 69.5 | 81.4 | 84.2 | |
| | Facility crude death rate | | | | | | | | 6.9 | 6.5 | 6.2 | 7.4 | |
| | PCV 3rd dose coverage (annualised) | | | | | | | 1.4 | 13.0 | 42.2 | 80.9 | 87.7 | |
| | Population density | 38.6 | 38.7 | 38.8 | 38.9 | 39.0 | 39.1 | 39.3 | 39.3 | 39.4 | 39.4 | 39.5 | |
| | Population total (Census) | | | | | | | | | | 6,562,053.0 | | |
| | Population total (DHIS) | | | | | | | | | 6,654,852.0 | 6,671,956.0 | | |
| | Population under 1 year (Census) | | | | | | | | | 145,067.0 | | | |
| | Population under 1 year (DHIS) | | | | | | | | | 133,057.0 | | | |
| | RV 2nd dose coverage (annualised) | | | | | | | 2.9 | 24.3 | 40.9 | 77.6 | 83.7 | |
| | Usable beds per 1 000 population | | | | | | | | 2.2 | 2.2 | 2.1 | 2.1 | |

Province page: FS, Free State

| Category | Indic | Year of IndYear | | | | | | | | | | |
|--------------------------|--|-----------------|------|---------|---------|---------|---------|---------|---------|---------|-------------|-------------|
| | | 2002 | 2003 | 2004 | 2005 | 2006 | 2007 | 2008 | 2009 | 2010 | 2011 | 2012 |
| 01_Finance | Percentage of DHS expenditure on district hospitals | | | 48.8 | 42.2 | 42.1 | 40.9 | 41.2 | 39.7 | 37.3 | 35.5 | 35.4 |
| | Percentage of DHS expenditure on district management | | | 3.1 | 7.6 | 6.2 | 3.9 | 2.3 | 2.8 | 3.0 | 2.9 | 3.5 |
| | Percentage of DHS expenditure on PHC | | | 48.1 | 50.2 | 51.7 | 55.3 | 56.5 | 57.6 | 59.7 | 61.6 | 61.1 |
| | Provincial and LG expenditure on District Health Services per capita (uninsured) | | | 726.0 | 765.0 | 801.0 | 744.0 | 845.0 | 987.0 | 1,096.0 | 1,144.0 | 1,207.0 |
| | Provincial expenditure per PHC headcount | | | 143.7 | 154.5 | 167.7 | 164.1 | 177.4 | 208.0 | 239.7 | 237.3 | 239.6 |
| | Provincial PHC expenditure per capita (uninsured) | | | 365.0 | 393.0 | 423.0 | 412.0 | 481.0 | 568.0 | 656.0 | 705.0 | 740.0 |
| 02_Management PHC | PHC supervisor visit rate (fixed clinic/CHC/CDC) | | | | 20.6 | 44.2 | 52.0 | 61.3 | 70.4 | 62.3 | 75.9 | 88.2 |
| 03_Management Inpatients | Average length of stay (District Hospitals) | 3.2 | 3.1 | 3.0 | 3.2 | 3.1 | 3.1 | 3.1 | 3.1 | 3.1 | 3.2 | 3.1 |
| | Expenditure per patient day equivalent (District Hospitals) | | | 1,208.0 | 1,286.0 | 1,407.0 | 1,432.0 | 1,639.0 | 1,740.0 | 1,796.0 | 1,724.0 | 1,714.0 |
| | Inpatient bed utilisation rate (District Hospitals) | 64.9 | 67.8 | 68.7 | 70.2 | 67.6 | 67.9 | 67.5 | 66.2 | 62.6 | 66.5 | 68.2 |
| | OPD new client not referred rate (District Hospitals) | | | | | | | | | 68.6 | 63.5 | 60.0 |
| | Ratio Ambulatory to Inpatient days (District Hospitals) | | | | | | | | | 1.3 | 1.4 | 1.5 |
| 04_Delivery | Caesarean section rate (District Hospitals) | 10.0 | 10.1 | 11.4 | 10.7 | 11.6 | 11.8 | 12.1 | 11.7 | 12.6 | 13.9 | 16.2 |
| | Delivery in facility under 18 years rate | 0.6 | 0.6 | 0.7 | 7.4 | 8.6 | 8.5 | 8.5 | 7.9 | 7.7 | 7.7 | 7.3 |
| | Inpatient early neonatal death rate | 7.8 | 10.8 | 10.2 | 8.8 | 9.4 | 11.3 | 10.9 | 10.8 | 12.4 | 11.7 | 10.8 |
| | Maternal mortality in facility ratio | | | | | | 273.8 | 197.1 | 237.2 | 237.2 | 199.1 | 132.7 |
| | Maternal mortality ratio institutional | | | | | | | 273.2 | 352.7 | 254.2 | | |
| | Stillbirth rate in facility | 36.1 | 33.4 | 31.4 | 30.9 | 28.2 | 30.7 | 27.3 | 29.3 | 30.9 | 29.1 | 25.1 |
| 05_Child Health | Child under 5 years diarrhoea case fatality rate | | | | | | 10.8 | 16.4 | 13.9 | 15.0 | 5.8 | 3.6 |
| | Child under 5 years diarrhoea with dehydration incidence | | | | | | | | 9.9 | 7.4 | 7.5 | 9.2 |
| | Child under 5 years pneumonia case fatality rate | | | | | | | | 10.5 | 10.6 | 9.0 | 3.5 |
| | Child under 5 years pneumonia incidence | | | | | | 111.6 | 109.8 | 110.0 | 96.1 | 89.3 | 82.3 |
| | Child under 5 years severe acute malnutrition case fatality rate | | | | | | | | 25.8 | 24.6 | 13.3 | 8.8 |
| | Child under 5 years severe acute malnutrition incidence | | | | | | | | 5.8 | 4.9 | 4.1 | 3.9 |
| | Vitamin A coverage 12 to 59 months | | 21.1 | 23.0 | 29.9 | 36.3 | 36.8 | 41.6 | 38.0 | 39.1 | 47.9 | 49.9 |
| 06_Immunisation | Immunisation coverage under 1 year | 68.2 | 69.5 | 72.1 | 79.2 | 80.8 | 79.4 | 83.9 | 87.0 | 83.8 | 91.9 | 95.1 |
| | Immunisation coverage under 1 year - adjusted | | | | | | | | | | 87.3 | |
| | Measles 1st to 2nd drop-out rate | 13.7 | 14.3 | 15.3 | 17.5 | 11.4 | 14.8 | 12.6 | 10.4 | 13.9 | 12.9 | 15.5 |
| 07_PMTCT | Antenatal client initiated on ART rate | | | | | | | | | 49.6 | 68.4 | 82.1 |
| | Antenatal visits before 20 weeks rate | 39.3 | 20.6 | 34.0 | 36.0 | 36.7 | 38.4 | 39.8 | 43.7 | 45.2 | 47.1 | 53.5 |
| | Early infant HIV diagnosis coverage | | | | | | | | | 50.3 | 63.4 | 67.2 |
| | HIV prevalence among antenatal clients (survey) | 28.8 | 30.1 | 29.3 | 30.3 | 31.1 | 31.6 | 32.9 | 30.1 | 30.6 | 32.5 | |
| | Infant 1st PCR test positive around 6 weeks rat | | | | | | 33.1 | 11.4 | 7.3 | 6.2 | 3.0 | 2.3 |
| | Percentage PCR tests under 2 months positive | | | | | | 11.0 | 9.2 | 5.7 | 4.1 | 2.6 | 2.5 |
| 08_Reproductive health | Cervical cancer screening coverage (annualised) | 15.7 | 21.4 | 22.6 | 28.5 | 32.6 | 35.0 | 38.9 | 40.3 | 38.1 | 44.2 | 51.0 |
| | Couple year protection rate (annualised) | 29.1 | 28.5 | 27.8 | 31.1 | 32.2 | 31.6 | 32.3 | 32.0 | 32.4 | 34.7 | 39.6 |
| 09_TB_CF | Incidence (diagnosed cases) of TB - all types | | | | | 820.0 | 844.0 | 890.0 | 860.0 | 837.0 | 788.0 | 709.0 |
| | Incidence (diagnosed cases) of TB - new PTB sm+ | | | | | | | | 327.3 | 320.0 | 302.7 | 314.1 |
| | Number of TB cases reported (new PTB sm+) | | | | | | | | 9,500.0 | 9,337.0 | 8,869.0 | 9,240.0 |
| | TB case finding index | | | | | | | | 2.3 | 2.4 | 2.4 | 2.2 |
| 09_TB_TO | TB cure rate (new sm+) | | | | | 69.5 | 72.2 | 71.4 | 71.3 | 72.7 | 72.4 | |
| | TB defaulter rate (new sm+) | | | | | | | | 4.4 | 4.8 | 4.7 | |
| | TB successful treatment rate (all TB) | | | | | 73.6 | 73.7 | 72.6 | 71.9 | 72.0 | 73.3 | |
| 10_HIV | Adult remaining on ART at end of the month - total | | | | | | | | | 6,253.0 | 19,833.0 | 124,221.0 |
| | Child under 15 years remaining on ART at end of the month - total | | | | | | | | | 227.0 | 1,410.0 | 7,846.0 |
| | Male condom distribution rate | 5.0 | 5.3 | 5.9 | 7.0 | 7.7 | 7.1 | 8.3 | 8.6 | 9.9 | 12.2 | 18.9 |
| 11_Socio-demogr.. | Adults (18-65) no secondary schooling | | | | | | | | | | 24.4 | |
| | Medical scheme coverage (ave) | | | | | | | | 18.0 | | | |
| | Percentage of people without piped water in dwelling or within 200m | | | | | | | | | | 4.6 | |
| 12_Burden of disease | Percentage of deaths garbage codes | | | | | | | 13.6 | 14.6 | | | |
| | Percentage of deaths ill-defined | | | | | | | 12.4 | 14.3 | | | |
| | Percentage of Years of Life Lost (YLL) due to HIV and TB | | | | | | | 25.5 | 25.5 | | | |
| | Percentage of Years of Life Lost (YLL) due to injuries | | | | | | | 7.5 | 7.7 | | | |
| | Percentage of Years of Life Lost (YLL) due to non-communicable diseases | | | | | | | 26.1 | 29.0 | | | |
| | Percentage of YLLs due to communicable, maternal, perinatal, nutrition causes | | | | | | | 40.9 | 37.7 | | | |
| Extra | Antenatal client HIV prevalence in facility | | | | | | | | | 29.0 | 27.7 | 28.6 |
| | Area (km2) | | | | | | | | | | 129,825.0 | |
| | Baby initiated on HAART under 18 months rate | | | | | | | | | 36.3 | 55.8 | |
| | Baby PCR test around 6 weeks uptake rate | | | | | | 5.1 | 29.4 | 92.5 | 97.6 | 103.4 | 101.2 |
| | Facility crude death rate | | | | | | | | 6.4 | 6.1 | 5.8 | 6.2 |
| | PCV 3rd dose coverage (annualised) | | | | | | | | 10.0 | 70.2 | 90.8 | 95.0 |
| | Population density | 21.4 | 21.5 | 21.7 | 21.8 | 21.9 | 22.1 | 22.2 | 22.4 | 22.5 | 22.6 | 22.7 |
| | Population total (Census) | | | | | | | | | | 2,745,590.0 | |
| | Population total (DHIS) | | | | | | | | | | 2,930,369.0 | 2,941,282.0 |
| | Population under 1 year (Census) | | | | | | | | | | 58,976.0 | |
| | Population under 1 year (DHIS) | | | | | | | | | | 56,524.0 | |
| | RV 2nd dose coverage (annualised) | | | | | | | | 12.2 | 77.1 | 97.6 | 99.0 |
| | Usable beds per 1 000 population | | | | | | | | 1.7 | 1.7 | 1.6 | 1.6 |

Section B: Profile South Africa

Province page: GP, Gauteng

| Category | Indic | Year of IndYear | | | | | | | | | | | |
|--------------------------|--|-----------------|-------|---------|---------|---------|---------|---------|----------|---------|--------------|--------------|-----------|
| | | 2002 | 2003 | 2004 | 2005 | 2006 | 2007 | 2008 | 2009 | 2010 | 2011 | 2012 | 2013 |
| 01_Finance | Percentage of DHS expenditure on district hospitals | | | 20.3 | 24.7 | 26.7 | 24.0 | 23.9 | 22.4 | 22.9 | 22.3 | 20.7 | |
| | Percentage of DHS expenditure on district management | | | 23.3 | 9.5 | 7.1 | 8.6 | 9.7 | 6.6 | 5.2 | 6.1 | 6.1 | |
| | Percentage of DHS expenditure on PHC | | | 56.3 | 65.8 | 66.2 | 67.5 | 66.4 | 71.0 | 71.8 | 71.6 | 73.2 | |
| | Provincial and LG expenditure on District Health Services per capita (uninsured) | | | 540.0 | 613.0 | 664.0 | 683.0 | 730.0 | 863.0 | 990.0 | 1,062.0 | 1,199.0 | |
| | Provincial expenditure per PHC headcount | | | 187.5 | 216.0 | 232.0 | 242.5 | 225.3 | 273.1 | 304.4 | 295.1 | 334.8 | |
| | Provincial PHC expenditure per capita (uninsured) | | | 355.0 | 443.0 | 491.0 | 496.0 | 520.0 | 651.0 | 756.0 | 803.0 | 928.0 | |
| 02_Management PHC | PHC supervisor visit rate (fixed clinic/CHC/CDC) | | | | 40.2 | 48.6 | 52.7 | 73.7 | 79.3 | 82.2 | 86.2 | 89.7 | |
| 03_Management Inpatients | Average length of stay (District Hospitals) | 3.8 | 3.2 | 3.2 | 3.2 | 3.3 | 3.5 | 3.5 | 3.4 | 3.3 | 3.5 | 3.2 | |
| | Expenditure per patient day equivalent (District Hospitals) | | | 1,391.0 | 1,569.0 | 1,599.0 | 1,695.0 | 1,753.0 | 1,859.0 | 2,191.0 | 2,127.0 | 2,172.0 | |
| | Inpatient bed utilisation rate (District Hospitals) | 57.0 | 62.5 | 63.8 | 63.0 | 66.8 | 64.6 | 64.4 | 66.5 | 62.6 | 65.2 | 66.3 | |
| | OPD new client not referred rate (District Hospitals) | | | | | | | | | 60.9 | 71.5 | 53.2 | |
| | Ratio Ambulatory to Inpatient days (District Hospitals) | | | | | | | | | 1.3 | 1.2 | 1.3 | |
| 04_Delivery | Caesarean section rate (District Hospitals) | 10.7 | 11.5 | 12.9 | 14.6 | 13.7 | 14.2 | 14.7 | 16.2 | 19.3 | 21.8 | 21.2 | |
| | Delivery in facility under 18 years rate | 8.9 | 8.4 | 8.7 | 8.4 | 9.1 | 8.7 | 6.8 | 5.5 | 5.7 | 5.6 | 4.8 | |
| | Inpatient early neonatal death rate | 2.9 | 7.6 | 8.2 | 8.9 | 7.8 | 7.8 | 9.3 | 8.9 | 9.6 | 9.7 | 8.8 | |
| | Maternal mortality in facility ratio | | | | | | 5.2 | 27.8 | 80.0 | 93.8 | 123.3 | 116.5 | |
| | Maternal mortality ratio institutional | | | | | | | 138.6 | 158.4 | 148.6 | | | |
| | Stillbirth rate in facility | 28.8 | 26.9 | 22.1 | 21.6 | 22.0 | 21.3 | 21.4 | 21.1 | 20.3 | 21.2 | 19.9 | |
| 05_Child Health | Child under 5 years diarrhoea case fatality rate | | | | | | 10.4 | 9.6 | 7.6 | 7.6 | 4.5 | 3.3 | |
| | Child under 5 years diarrhoea with dehydration incidence | | | | | | | | 10.9 | 15.2 | 12.4 | 9.6 | |
| | Child under 5 years pneumonia case fatality rate | | | | | | | | 6.2 | 5.5 | 3.6 | 2.3 | |
| | Child under 5 years pneumonia incidence | | | | | | 52.1 | 56.9 | 58.3 | 59.3 | 56.6 | 45.5 | |
| | Child under 5 years severe acute malnutrition case fatality rate | | | | | | | | 20.5 | 13.4 | 12.5 | 12.1 | |
| | Child under 5 years severe acute malnutrition incidence | | | | | | | | 2.9 | 3.8 | 2.9 | 2.5 | |
| | Vitamin A coverage 12 to 59 months | | 3.7 | 10.2 | 20.5 | 27.8 | 30.3 | 34.8 | 40.8 | 43.7 | 47.7 | 46.3 | |
| 06_Immunisation | Immunisation coverage under 1 year | 66.5 | 72.2 | 78.4 | 93.4 | 99.5 | 102.6 | 111.0 | 113.7 | 111.3 | 114.6 | 107.9 | |
| | Immunisation coverage under 1 year - adjusted | | | | | | | | | | 88.6 | | |
| | Measles 1st to 2nd drop-out rate | 14.6 | 17.1 | 16.9 | 18.8 | 13.5 | 20.9 | 20.2 | 13.5 | 17.6 | 19.9 | 19.8 | |
| 07_PMTCT | Antenatal client initiated on ART rate | | | | | | | | | 60.1 | 80.5 | 83.0 | |
| | Antenatal visits before 20 weeks rate | | | | 25.4 | 25.4 | 25.8 | 24.3 | 25.2 | 30.6 | 34.6 | 37.8 | |
| | Early infant HIV diagnosis coverage | | | | | | | | | 72.0 | 80.9 | 86.7 | |
| | HIV prevalence among antenatal clients (survey) | 31.7 | 29.6 | 32.8 | 32.5 | 30.9 | 30.7 | 30.0 | 29.8 | 30.4 | 28.7 | | |
| | Infant 1st PCR test positive around 6 weeks rat | | | | | | | 13.3 | 10.3 | 9.8 | 6.4 | 4.1 | 2.4 |
| | Percentage PCR tests under 2 months positive | | | | | | | 10.1 | 6.6 | 5.2 | 3.4 | 2.6 | 2.2 |
| 08_Reproductive health | Cervical cancer screening coverage (annualised) | 16.7 | 20.8 | 24.8 | 29.7 | 41.1 | 39.8 | 46.1 | 45.6 | 51.4 | 44.9 | 44.1 | |
| | Couple year protection rate (annualised) | 19.7 | 20.3 | 23.3 | 23.7 | 24.2 | 24.0 | 26.1 | 27.1 | 26.3 | 26.2 | 28.3 | |
| 09_TB_CF | Incidence (diagnosed cases) of TB - all types | | | | | 462.0 | 174.0 | 489.0 | 517.0 | 114.0 | 496.0 | 448.0 | |
| | Incidence (diagnosed cases) of TB - new PTB sm+ | | | | | | | | 213.7 | 46.5 | 189.4 | 163.8 | |
| | Number of TB cases reported (new PTB sm+) | | | | | | | | 23,022.0 | 5,105.0 | 21,170.0 | 18,591.0 | |
| | TB case finding index | | | | | | | | 2.4 | 2.5 | 2.4 | 2.0 | |
| 09_TB_TO | TB cure rate (new sm+) | | | | | 71.3 | 73.6 | 75.7 | 77.1 | 79.9 | 81.1 | | |
| | TB defaulter rate (new sm+) | | | | | | | | 6.1 | 4.9 | 5.1 | | |
| | TB successful treatment rate (all TB) | | | | | 73.5 | 74.3 | 76.0 | 77.6 | 78.6 | 80.7 | | |
| 10_HIV | Adult remaining on ART at end of the month - total | | | | | | | | | | 115,310.0 | 246,295.0 | 505,644.0 |
| | Child under 15 years remaining on ART at end of the month - total | | | | | | | | | | 891.0 | 5,818.0 | 28,564.0 |
| | Male condom distribution rate | 0.2 | 1.5 | 6.3 | 5.6 | 6.4 | 6.5 | 7.8 | 8.2 | 8.3 | 7.9 | 10.3 | |
| 11_Socio-demogr.. | Adults (18-65) no secondary schooling | | | | | | | | | | 12.9 | | |
| | Medical scheme coverage (ave) | | | | | | | | 26.6 | | | | |
| | Percentage of people without piped water in dwelling or within 200m | | | | | | | | | | 3.9 | | |
| 12_Burden of disease | Percentage of deaths garbage codes | | | | | | | 18.5 | 19.4 | | | | |
| | Percentage of deaths ill-defined | | | | | | | 14.1 | 14.5 | | | | |
| | Percentage of Years of Life Lost (YLL) due to HIV and TB | | | | | | | 23.4 | 22.9 | | | | |
| | Percentage of Years of Life Lost (YLL) due to injuries | | | | | | | 11.7 | 11.4 | | | | |
| | Percentage of Years of Life Lost (YLL) due to non-communicable diseases | | | | | | | 31.7 | 34.5 | | | | |
| | Percentage of YLLs due to communicable, maternal, perinatal, nutrition causes | | | | | | | 33.1 | 31.2 | | | | |
| Extra | Antenatal client HIV prevalence in facility | | | | | | | | | 30.2 | 25.7 | 25.7 | |
| | Area (km2) | | | | | | | | | | 18,178.0 | | |
| | Baby initiated on HAART under 18 months rate | | | | | | | | | 51.4 | 54.0 | | |
| | Baby PCR test around 6 weeks uptake rate | | | | | | 73.1 | 78.5 | 87.2 | 95.6 | 93.6 | 97.3 | |
| | Facility crude death rate | | | | | | | | 5.4 | 5.2 | 4.7 | 5.7 | |
| | PCV 3rd dose coverage (annualised) | | | | | | | | 30.1 | 94.5 | 102.8 | 109.3 | |
| | Population density | 517.3 | 528.4 | 539.0 | 546.5 | 560.7 | 570.8 | 581.6 | 592.7 | 603.6 | 614.9 | 624.2 | |
| | Population total (Census) | | | | | | | | | | 12,272,263.0 | | |
| | Population total (DHIS) | | | | | | | | | | 11,177,946.0 | 11,347,393.0 | |
| | Population under 1 year (Census) | | | | | | | | | | 255,863.0 | | |
| | Population under 1 year (DHIS) | | | | | | | | | | 197,043.0 | | |
| | RV 2nd dose coverage (annualised) | | | | | | | | | 46.6 | 94.1 | 111.8 | 112.4 |
| | Usable beds per 1 000 population | | | | | | | | | 1.6 | 1.5 | 1.5 | 1.5 |

Province page: KZN, KwaZulu-Natal

| Category | Indic | Year of IndYear | | | | | | | | | | | |
|--------------------------|--|-----------------|-------|---------|---------|---------|---------|---------|----------|-----------|--------------|--------------|------|
| | | 2002 | 2003 | 2004 | 2005 | 2006 | 2007 | 2008 | 2009 | 2010 | 2011 | 2012 | 2013 |
| 01_Finance | Percentage of DHS expenditure on district hospitals | | | 55.7 | 54.0 | 50.7 | 50.3 | 50.0 | 50.8 | 48.0 | 44.5 | 41.9 | |
| | Percentage of DHS expenditure on district management | 1.8 | 1.8 | 2.2 | 2.1 | 1.9 | 1.2 | 1.2 | 1.4 | 1.6 | 2.1 | | |
| | Percentage of DHS expenditure on PHC | | | 42.5 | 44.2 | 47.0 | 47.7 | 48.1 | 48.0 | 50.6 | 53.9 | 56.0 | |
| | Provincial and LG expenditure on District Health Services per capita (uninsured) | | | 830.0 | 917.0 | 930.0 | 1,119.0 | 1,140.0 | 1,256.0 | 1,210.0 | 1,254.0 | 1,300.0 | |
| | Provincial expenditure per PHC headcount | | | 196.5 | 211.5 | 188.4 | 224.6 | 214.1 | 216.0 | 221.2 | 220.1 | 223.8 | |
| | Provincial PHC expenditure per capita (uninsured) | | | 378.0 | 432.0 | 462.0 | 557.0 | 573.0 | 615.0 | 632.0 | 694.0 | 744.0 | |
| 02_Management PHC | PHC supervisor visit rate (fixed clinic/CHC/CDC) | | | | 42.0 | 56.8 | 56.9 | 58.1 | 66.2 | 60.4 | 60.5 | 60.8 | |
| 03_Management Inpatients | Average length of stay (District Hospitals) | 5.9 | 6.3 | 6.1 | 5.8 | 5.7 | 5.7 | 5.7 | 5.7 | 5.9 | 5.8 | 5.6 | |
| | Expenditure per patient day equivalent (District Hospitals) | | | 1,028.0 | 1,070.0 | 1,042.0 | 1,348.0 | 1,383.0 | 1,310.0 | 1,426.0 | 1,530.0 | 1,734.0 | |
| | Inpatient bed utilisation rate (District Hospitals) | 60.4 | 59.4 | 60.5 | 63.5 | 63.4 | 61.7 | 62.3 | 63.7 | 61.7 | 63.7 | 63.2 | |
| | OPD new client not referred rate (District Hospitals) | | | | | | | | | 47.3 | 49.3 | 52.2 | |
| | Ratio Ambulatory to Inpatient days (District Hospitals) | | | | | | | | | 1.4 | 1.4 | 1.3 | |
| 04_Delivery | Caesarean section rate (District Hospitals) | 17.6 | 17.3 | 18.8 | 19.3 | 21.1 | 20.9 | 22.4 | 23.8 | 24.4 | 26.0 | 27.0 | |
| | Delivery in facility under 18 years rate | 9.4 | 9.0 | 9.1 | 9.6 | 9.5 | 9.3 | 9.1 | 9.1 | 8.7 | 9.3 | 9.3 | |
| | Inpatient early neonatal death rate | 11.1 | 11.0 | 9.7 | 8.8 | 8.5 | 5.5 | 6.1 | 9.0 | 9.0 | 9.2 | 8.7 | |
| | Maternal mortality in facility ratio | | | | | | 214.9 | 155.1 | 166.0 | 196.9 | 192.2 | 165.5 | |
| | Maternal mortality ratio institutional | | | | | | | 185.1 | 193.7 | 211.5 | | | |
| | Stillbirth rate in facility | 30.9 | 30.8 | 26.3 | 26.6 | 25.6 | 25.0 | 22.3 | 24.1 | 22.8 | 23.4 | 23.3 | |
| 05_Child Health | Child under 5 years diarrhoea case fatality rate | | | | | | 8.1 | 6.6 | 6.7 | 6.8 | 4.3 | 4.3 | |
| | Child under 5 years diarrhoea with dehydration incidence | | | | | | | | 41.8 | 26.8 | 21.0 | 15.4 | |
| | Child under 5 years pneumonia case fatality rate | | | | | | | | 5.6 | 5.4 | 3.8 | 2.6 | |
| | Child under 5 years pneumonia incidence | | | | | | 158.6 | 166.7 | 178.8 | 147.8 | 145.5 | 119.0 | |
| | Child under 5 years severe acute malnutrition case fatality rate | | | | | | | | 15.4 | 11.6 | 9.2 | 11.0 | |
| | Child under 5 years severe acute malnutrition incidence | | | | | | | | 8.0 | 7.1 | 6.8 | 6.5 | |
| | Vitamin A coverage 12 to 59 months | | 8.6 | 14.3 | 19.9 | 24.4 | 29.5 | 27.3 | 30.3 | 32.8 | 42.8 | 43.6 | |
| 06_Immunisation | Immunisation coverage under 1 year | 69.5 | 70.0 | 69.0 | 76.0 | 79.3 | 79.2 | 83.1 | 84.6 | 85.4 | 98.6 | 95.4 | |
| | Immunisation coverage under 1 year - adjusted | | | | | | | | | | 89.5 | | |
| | Measles 1st to 2nd drop-out rate | 11.0 | 12.1 | 14.7 | 20.9 | 13.7 | 17.8 | 13.7 | 7.7 | 13.1 | 10.0 | 10.4 | |
| 07_PMTCT | Antenatal client initiated on ART rate | | | | | | | | | 160.0 | 93.6 | 83.2 | |
| | Antenatal visits before 20 weeks rate | 18.8 | 24.8 | 25.6 | 28.4 | 30.9 | 32.3 | 33.5 | 34.6 | 36.9 | 41.0 | 46.4 | |
| | Early infant HIV diagnosis coverage | | | | | | | | | 55.2 | 72.5 | 78.6 | |
| | HIV prevalence among antenatal clients (survey) | 36.1 | 37.3 | 40.3 | 38.9 | 38.9 | 38.7 | 38.7 | 39.5 | 39.5 | 37.4 | | |
| | Infant 1st PCR test positive around 6 weeks rat | | | | | | 6.7 | 5.9 | 10.1 | 6.8 | 4.0 | 2.2 | |
| | Percentage PCR tests under 2 months positive | | | | | | 15.4 | 12.3 | 6.1 | 4.0 | 2.7 | 2.3 | |
| 08_Reproductive health | Cervical cancer screening coverage (annualised) | 4.2 | 3.5 | 15.8 | 20.9 | 32.4 | 39.3 | 51.1 | 47.0 | 58.2 | 77.1 | 81.8 | |
| | Couple year protection rate (annualised) | 23.0 | 22.9 | 22.5 | 22.9 | 24.7 | 23.9 | 23.8 | 24.2 | 24.2 | 27.1 | 37.5 | |
| 09_TB_CF | Incidence (diagnosed cases) of TB - all types | | | | | 592.0 | 881.0 | 928.0 | 1,215.0 | 1,162.0 | 1,142.0 | 971.0 | |
| | Incidence (diagnosed cases) of TB - new PTB sm+ | | | | | | | | 302.3 | 276.9 | 312.7 | 276.7 | |
| | Number of TB cases reported (new PTB sm+) | | | | | | | | 31,589.0 | 29,191.0 | 33,217.0 | 29,620.0 | |
| | TB case finding index | | | | | | | | 2.2 | 2.4 | 2.6 | 2.6 | |
| 09_TB_TO | TB cure rate (new sm+) | | | | | 49.4 | 56.1 | 64.3 | 65.0 | 71.1 | 74.1 | | |
| | TB defaulter rate (new sm+) | | | | | | | | 7.3 | 7.2 | 5.8 | | |
| | TB successful treatment rate (all TB) | | | | | 65.5 | 63.3 | 68.0 | 70.4 | 73.7 | 75.9 | | |
| 10_HIV | Adult remaining on ART at end of the month - total | | | | | | | | | 410,885.0 | 514,752.0 | 672,544.0 | |
| | Child under 15 years remaining on ART at end of the month - total | | | | | | | | | 37,813.0 | 45,032.0 | 53,794.0 | |
| | Male condom distribution rate | 6.5 | 6.9 | 7.1 | 7.5 | 7.9 | 7.4 | 8.2 | 8.2 | 8.2 | 11.1 | 25.9 | |
| 11_Socio-demogr... | Adults (18-65) no secondary schooling | | | | | | | | | | 24.0 | | |
| | Medical scheme coverage (ave) | | | | | | | | 12.5 | | | | |
| | Percentage of people without piped water in dwelling or within 200m | | | | | | | | | | 25.1 | | |
| 12_Burden of disease | Percentage of deaths garbage codes | | | | | | | 15.0 | 15.8 | | | | |
| | Percentage of deaths ill-defined | | | | | | | 13.5 | 13.5 | | | | |
| | Percentage of Years of Life Lost (YLL) due to HIV and TB | | | | | | | 34.7 | 34.3 | | | | |
| | Percentage of Years of Life Lost (YLL) due to injuries | | | | | | | 10.0 | 10.1 | | | | |
| | Percentage of Years of Life Lost (YLL) due to non-communicable diseases | | | | | | | 25.6 | 27.5 | | | | |
| | Percentage of YLLs due to communicable, maternal, perinatal, nutrition causes | | | | | | | 29.6 | 28.2 | | | | |
| Extra | Antenatal client HIV prevalence in facility | | | | | | | | | 34.2 | 38.4 | 37.5 | |
| | Area (km2) | | | | | | | | | | 94,361.0 | | |
| | Baby initiated on HAART under 18 months rate | | | | | | | | | 64.1 | 51.0 | | |
| | Baby PCR test around 6 weeks uptake rate | | | | | | 33.8 | 88.2 | 105.9 | 91.7 | 107.6 | 114.6 | |
| | Facility crude death rate | | | | | | | | 6.6 | 6.6 | 5.5 | 5.8 | |
| | PCV 3rd dose coverage (annualised) | | | | | | | | 25.4 | 80.3 | 97.5 | 97.5 | |
| | Population density | 102.6 | 103.9 | 105.1 | 106.2 | 107.4 | 108.5 | 109.7 | 110.7 | 111.7 | 112.6 | 113.4 | |
| | Population total (Census) | | | | | | | | | | 10,267,300.0 | | |
| | Population total (DHIS) | | | | | | | | | | 10,622,198.0 | 10,703,918.0 | |
| | Population under 1 year (Census) | | | | | | | | | | 237,444.0 | | |
| | Population under 1 year (DHIS) | | | | | | | | | | 216,239.0 | | |
| | RV 2nd dose coverage (annualised) | | | | | | | | 40.6 | 81.2 | 105.2 | 102.2 | |
| | Usable beds per 1 000 population | | | | | | | | 2.1 | 2.1 | 2.1 | 2.1 | |

Section B: Profile South Africa

Province page: LP, Limpopo

| Category | Indic | Year of IndYear | | | | | | | | | | | |
|----------------------------------|--|-----------------|------|---------|---------|---------|---------|---------|---------|---------|-------------|-------------|-----------|
| | | 2002 | 2003 | 2004 | 2005 | 2006 | 2007 | 2008 | 2009 | 2010 | 2011 | 2012 | 2013 |
| 01_Finance | Percentage of DHS expenditure on district hospitals | | | 59.6 | 56.5 | 57.0 | 52.7 | 50.2 | 47.9 | 47.9 | 49.3 | 49.4 | |
| | Percentage of DHS expenditure on district management | | | 2.7 | 3.6 | 2.7 | 4.0 | 7.5 | 7.3 | 8.4 | 7.5 | 7.2 | |
| | Percentage of DHS expenditure on PHC | | | 37.7 | 40.0 | 40.3 | 43.3 | 42.3 | 44.8 | 43.7 | 43.1 | 43.3 | |
| | Provincial and LG expenditure on District Health Services per capita (uninsured) | | | 718.0 | 741.0 | 854.0 | 943.0 | 1,090.0 | 1,204.0 | 1,327.0 | 1,425.0 | 1,501.0 | |
| | Provincial expenditure per PHC headcount | | | 100.3 | 105.4 | 118.6 | 142.8 | 150.1 | 171.0 | 200.0 | 203.3 | 220.6 | |
| | Provincial PHC expenditure per capita (uninsured) | | | 279.0 | 308.0 | 357.0 | 412.0 | 464.0 | 543.0 | 582.0 | 622.0 | 656.0 | |
| 02_Management PHC | PHC supervisor visit rate (fixed clinic/CHC/CDC) | | | | 48.3 | 61.1 | 59.5 | 66.4 | 66.9 | 64.6 | 84.5 | 91.9 | |
| 03_Management Inpatients | Average length of stay (District Hospitals) | 5.4 | 5.2 | 4.2 | 4.2 | 4.4 | 4.3 | 4.2 | 4.3 | 4.3 | 4.5 | 4.3 | |
| | Expenditure per patient day equivalent (District Hospitals) | | | 1,224.0 | 1,318.0 | 1,458.0 | 1,571.0 | 1,533.0 | 1,664.0 | 1,926.0 | 1,913.0 | 2,065.0 | |
| | Inpatient bed utilisation rate (District Hospitals) | 60.6 | 62.5 | 63.4 | 66.7 | 67.8 | 65.2 | 68.1 | 66.9 | 65.2 | 72.4 | 72.2 | |
| | OPD new client not referred rate (District Hospitals) | | | | | | | | | 80.7 | 80.4 | 78.8 | |
| | Ratio Ambulatory to Inpatient days (District Hospitals) | | | | | | | | | 1.6 | 1.5 | 1.6 | |
| 04_Delivery | Caesarean section rate (District Hospitals) | 12.0 | 11.9 | 12.7 | 13.4 | 15.1 | 15.7 | 14.8 | 16.5 | 17.2 | 17.7 | 18.1 | |
| | Delivery in facility under 18 years rate | 11.1 | 10.7 | 10.0 | 9.8 | 8.4 | 8.4 | 8.4 | 8.2 | 8.2 | 8.1 | 7.8 | |
| | Inpatient early neonatal death rate | 12.5 | 13.5 | 11.6 | 10.9 | 11.8 | 10.8 | 10.7 | 10.7 | 10.7 | 11.0 | 11.5 | |
| | Maternal mortality in facility ratio | | | | | | | | 3.3 | 142.1 | 184.6 | 177.9 | |
| | Maternal mortality ratio institutional | | | | | | | | 176.9 | 160.3 | 162.8 | | |
| | Stillbirth rate in facility | 23.2 | 24.2 | 21.7 | 20.5 | 21.5 | 21.7 | 21.7 | 21.7 | 21.9 | 21.3 | 21.8 | |
| 05_Child Health | Child under 5 years diarrhoea case fatality rate | | | | | | 12.2 | 10.7 | 8.1 | 9.2 | 8.1 | 7.8 | |
| | Child under 5 years diarrhoea with dehydration incidence | | | | | | | | 14.9 | 15.5 | 14.1 | 13.1 | |
| | Child under 5 years pneumonia case fatality rate | | | | | | | | 10.2 | 7.3 | 5.5 | 4.8 | |
| | Child under 5 years pneumonia incidence | | | | | | 64.9 | 62.6 | 60.9 | 54.6 | 53.9 | 44.8 | |
| | Child under 5 years severe acute malnutrition case fatality rate | | | | | | | | 23.9 | 23.3 | 18.7 | 18.5 | |
| | Child under 5 years severe acute malnutrition incidence | | | | | | | | 4.0 | 4.1 | 4.4 | 5.0 | |
| | Vitamin A coverage 12 to 59 months | | 11.1 | 17.0 | 20.0 | 24.7 | 25.1 | 38.3 | 30.6 | 30.3 | 46.8 | 40.2 | |
| 06_Immunisation | Immunisation coverage under 1 year | 77.5 | 77.1 | 76.8 | 83.2 | 88.5 | 82.9 | 90.9 | 99.6 | 93.7 | 96.7 | 93.8 | |
| | Immunisation coverage under 1 year - adjusted | | | | | | | | | | 72.1 | | |
| | Measles 1st to 2nd drop-out rate | 9.9 | 11.6 | 14.9 | 22.0 | 17.3 | 17.2 | 12.7 | 3.7 | 8.9 | 14.1 | 16.2 | |
| 07_PMTCT | Antenatal client initiated on ART rate | | | | | | | | | 76.6 | 73.1 | 69.4 | |
| | Antenatal visits before 20 weeks rate | 31.2 | 31.1 | 31.3 | 33.4 | 35.8 | 34.2 | 40.0 | 42.9 | 41.6 | 41.3 | 42.0 | |
| | Early infant HIV diagnosis coverage | | | | | | | | | 47.4 | 52.4 | 63.8 | |
| | HIV prevalence among antenatal clients (survey) | 15.8 | 17.2 | 19.1 | 21.5 | 20.7 | 20.4 | 20.6 | 21.4 | 21.9 | 22.1 | | |
| | Infant 1st PCR test positive around 6 weeks rat | | | | | | | | 354.4 | 27.9 | 21.1 | 4.2 | 2.4 |
| | Percentage PCR tests under 2 months positive | | | | | | | 9.4 | 9.6 | 7.0 | 4.6 | 3.4 | 2.9 |
| 08_Reproductive health | Cervical cancer screening coverage (annualised) | 0.3 | 0.4 | 0.4 | 20.4 | 54.8 | 38.2 | 52.5 | 63.9 | 55.9 | 60.1 | 56.5 | |
| | Couple year protection rate (annualised) | 35.4 | 34.4 | 34.2 | 35.1 | 36.3 | 35.2 | 35.4 | 35.4 | 32.7 | 36.5 | 37.3 | |
| 09_TB_CF | Incidence (diagnosed cases) of TB - all types | | | | | 284.0 | 329.0 | 397.0 | 433.0 | 420.0 | 420.0 | 382.0 | |
| | Incidence (diagnosed cases) of TB - new PTB sm+ | | | | | | | | 182.7 | 185.0 | 169.2 | 143.2 | |
| | Number of TB cases reported (new PTB sm+) | | | | | | | | 9,553.0 | 9,711.0 | 8,903.0 | 7,567.0 | |
| | TB case finding index | | | | | | | | 1.6 | 2.0 | 2.3 | 1.9 | |
| 09_TB_TO | TB cure rate (new sm+) | | | | | 58.3 | 61.1 | 65.2 | 68.0 | 72.6 | 75.3 | | |
| | TB defaulter rate (new sm+) | | | | | | | | 7.6 | 5.9 | 4.7 | | |
| | TB successful treatment rate (all TB) | | | | | 62.2 | 63.7 | 64.6 | 65.7 | 64.5 | 65.7 | | |
| 10_HIV | Adult remaining on ART at end of the month - total | | | | | | | | | | 70,912.0 | 113,821.0 | 149,102.0 |
| | Child under 15 years remaining on ART at end of the month - total | | | | | | | | | | 5,672.0 | 7,989.0 | 10,329.0 |
| | Male condom distribution rate | 9.0 | 9.2 | 9.9 | 12.4 | 13.5 | 13.3 | 13.6 | 14.6 | 13.6 | 19.7 | 21.0 | |
| 11_Socio-demogr.. | Adults (18-65) no secondary schooling | | | | | | | | | | 25.1 | | |
| | Medical scheme coverage (ave) | | | | | | | | 8.7 | | | | |
| | Percentage of people without piped water in dwelling or within 200m | | | | | | | | | | 27.9 | | |
| 12_Burden of disease | Percentage of deaths garbage codes | | | | | | | | 11.8 | 11.2 | | | |
| | Percentage of deaths ill-defined | | | | | | | | 20.1 | 19.5 | | | |
| | Percentage of Years of Life Lost (YLL) due to HIV and TB | | | | | | | | 20.4 | 20.1 | | | |
| | Percentage of Years of Life Lost (YLL) due to injuries | | | | | | | | 8.7 | 9.0 | | | |
| | Percentage of Years of Life Lost (YLL) due to non-communicable diseases | | | | | | | | 27.6 | 29.4 | | | |
| | Percentage of YLLs due to communicable, maternal, perinatal, nutrition causes | | | | | | | | 43.3 | 41.5 | | | |
| Extra | Antenatal client HIV prevalence in facility | | | | | | | | | 25.7 | 22.3 | 19.6 | |
| | Area (km2) | | | | | | | | | | 125,755.0 | | |
| | Baby initiated on HAART under 18 months rate | | | | | | | | | 62.6 | 48.3 | | |
| | Baby PCR test around 6 weeks uptake rate | | | | | | | 0.9 | 44.5 | 74.5 | 84.4 | 91.5 | |
| | Facility crude death rate | | | | | | | | 5.9 | 5.6 | 5.7 | 5.9 | |
| | PCV 3rd dose coverage (annualised) | | | | | | | | 33.2 | 80.8 | 105.6 | 106.0 | |
| | Population density | 39.8 | 40.1 | 40.4 | 40.6 | 40.9 | 41.1 | 41.4 | 41.6 | 41.7 | 41.8 | 42.0 | |
| | Population total (Census) | | | | | | | | | | 5,404,868.0 | | |
| | Population total (DHIS) | | | | | | | | | | 5,261,983.0 | 5,282,562.0 | |
| | Population under 1 year (Census) | | | | | | | | | | 141,124.0 | | |
| | Population under 1 year (DHIS) | | | | | | | | | | 105,452.0 | | |
| | RV 2nd dose coverage (annualised) | | | | | | | | | 42.8 | 74.1 | 109.4 | 107.7 |
| Usable beds per 1 000 population | | | | | | | | | 1.5 | 1.5 | 1.5 | 1.5 | |

Province page: MP, Mpumalanga

| Category | Indic | Year of IndYear | | | | | | | | | | | |
|--------------------------|--|---|------|---------|---------|---------|---------|---------|----------|----------|-------------|-------------|-----------|
| | | 2002 | 2003 | 2004 | 2005 | 2006 | 2007 | 2008 | 2009 | 2010 | 2011 | 2012 | 2013 |
| 01_Finance | Percentage of DHS expenditure on district hospitals | | | 96.0 | 92.4 | 82.8 | 82.4 | 54.0 | 53.0 | 51.3 | 50.0 | 46.6 | |
| | Percentage of DHS expenditure on district management | | | 0.0 | 0.1 | 5.1 | 6.7 | 5.9 | 6.6 | 5.8 | 6.5 | 8.7 | |
| | Percentage of DHS expenditure on PHC | | | 4.0 | 7.4 | 12.1 | 10.9 | 40.1 | 40.4 | 42.9 | 43.6 | 44.7 | |
| | Provincial and LG expenditure on District Health Services per capita (uninsured) | | | 775.0 | 759.0 | 826.0 | 872.0 | 972.0 | 1,135.0 | 1,293.0 | 1,359.0 | 1,411.0 | |
| | Provincial expenditure per PHC headcount | | | 97.1 | 119.4 | 129.6 | 154.7 | 155.7 | 179.6 | 222.6 | 218.1 | 227.0 | |
| | Provincial PHC expenditure per capita (uninsured) | | | 230.0 | 287.0 | 312.0 | 368.0 | 397.0 | 459.0 | 568.0 | 603.0 | 643.0 | |
| 02_Management PHC | PHC supervisor visit rate (fixed clinic/CHC/CDC) | | | | 12.4 | 24.5 | 22.5 | 43.4 | 74.4 | 75.8 | 79.7 | 75.1 | |
| 03_Management Inpatients | Average length of stay (District Hospitals) | 3.7 | 3.5 | 3.3 | 3.6 | 4.4 | 4.6 | 4.7 | 4.3 | 4.3 | 4.2 | 4.1 | |
| | Expenditure per patient day equivalent (District Hospitals) | | | 1,387.0 | 1,482.0 | 1,551.0 | 1,433.0 | 1,564.0 | 1,725.0 | 1,918.0 | 1,838.0 | 1,744.0 | |
| | Inpatient bed utilisation rate (District Hospitals) | 57.9 | 60.7 | 63.1 | 62.5 | 63.5 | 70.2 | 74.7 | 68.7 | 65.4 | 68.9 | 69.9 | |
| | OPD new client not referred rate (District Hospitals) | | | | | | | | | 68.9 | 72.4 | 67.6 | |
| | Ratio Ambulatory to Inpatient days (District Hospitals) | | | | | | | | | 1.5 | 1.6 | 1.7 | |
| | 04_Delivery | Caesarean section rate (District Hospitals) | 12.2 | 12.4 | 12.4 | 13.1 | 13.1 | 12.5 | 14.6 | 16.2 | 15.8 | 17.2 | 17.6 |
| | Delivery in facility under 18 years rate | 13.1 | 13.0 | 13.7 | 12.3 | 10.0 | 10.2 | 10.3 | 10.1 | 10.1 | 9.5 | 8.9 | |
| | Inpatient early neonatal death rate | 11.5 | 10.9 | 10.6 | 9.2 | 10.1 | 11.9 | 10.1 | 10.6 | 9.2 | 9.8 | 9.5 | |
| | Maternal mortality in facility ratio | | | | | | 82.6 | 110.3 | 119.0 | 161.1 | 135.0 | 175.8 | |
| | Maternal mortality ratio institutional | | | | | | | 176.6 | 161.0 | 213.9 | | | |
| | Stillbirth rate in facility | 22.6 | 24.8 | 23.4 | 23.2 | 22.2 | 23.9 | 24.5 | 24.8 | 24.3 | 24.1 | 24.3 | |
| 05_Child Health | Child under 5 years diarrhoea case fatality rate | | | | | | 16.8 | 14.7 | 11.5 | 12.9 | 8.2 | 7.6 | |
| | Child under 5 years diarrhoea with dehydration incidence | | | | | | | | 10.7 | 12.2 | 8.2 | 8.8 | |
| | Child under 5 years pneumonia case fatality rate | | | | | | | | 8.8 | 9.4 | 7.8 | 5.3 | |
| | Child under 5 years pneumonia incidence | | | | | | 54.7 | 58.8 | 56.4 | 43.7 | 38.6 | 30.8 | |
| | Child under 5 years severe acute malnutrition case fatality rate | | | | | | | | 16.1 | 22.1 | 27.3 | 13.1 | |
| | Child under 5 years severe acute malnutrition incidence | | | | | | | | 5.5 | 3.8 | 2.8 | 2.9 | |
| | Vitamin A coverage 12 to 59 months | | 16.4 | 17.6 | 19.1 | 22.5 | 23.2 | 25.8 | 27.8 | 29.1 | 39.1 | 40.2 | |
| 06_Immunisation | Immunisation coverage under 1 year | 62.9 | 66.5 | 70.4 | 78.7 | 82.4 | 86.0 | 83.3 | 92.8 | 69.8 | 73.9 | 83.0 | |
| | Immunisation coverage under 1 year - adjusted | | | | | | | | | | 61.0 | | |
| | Measles 1st to 2nd drop-out rate | 6.0 | 10.3 | 12.7 | 21.0 | 14.3 | 17.6 | 16.3 | 12.3 | 16.2 | 14.7 | 17.8 | |
| 07_PMTCT | Antenatal client initiated on ART rate | | | | | | | | | 54.6 | 66.5 | 81.1 | |
| | Antenatal visits before 20 weeks rate | 28.6 | 29.6 | 29.9 | 31.0 | 29.5 | 28.1 | 32.3 | 33.0 | 36.0 | 37.5 | 42.2 | |
| | Early infant HIV diagnosis coverage | | | | | | | | | 51.0 | 54.9 | 74.9 | |
| | HIV prevalence among antenatal clients (survey) | 28.1 | 32.5 | 30.8 | 34.7 | 32.0 | 34.6 | 35.4 | 34.7 | 35.1 | 36.7 | | |
| | Infant 1st PCR test positive around 6 weeks rate | | | | | | 25.9 | 17.4 | 17.0 | 7.9 | 4.6 | 3.0 | |
| | Percentage PCR tests under 2 months positive | | | | | | 14.1 | 9.6 | 6.5 | 4.0 | 3.2 | 2.7 | |
| 08_Reproductive health | Cervical cancer screening coverage (annualised) | 4.0 | 6.3 | 6.0 | 13.0 | 24.8 | 31.8 | 40.9 | 52.2 | 60.2 | 59.3 | 57.1 | |
| | Couple year protection rate (annualised) | 22.7 | 22.9 | 24.0 | 23.1 | 24.2 | 25.3 | 28.8 | 31.6 | 33.0 | 33.7 | 35.9 | |
| 09_TB_CF | Incidence (diagnosed cases) of TB - all types | | | | | 23.0 | 227.0 | 637.0 | 745.0 | 715.0 | 674.0 | 552.0 | |
| | Incidence (diagnosed cases) of TB - new PTB sm+ | | | | | | | | 298.1 | 298.6 | 254.3 | 201.3 | |
| | Number of TB cases reported (new PTB sm+) | | | | | | | | 10,751.0 | 10,854.0 | 9,313.0 | 7,428.0 | |
| | TB case finding index | | | | | | | | 1.8 | 2.1 | 2.0 | 1.7 | |
| 09_TB_TO | TB cure rate (new sm+) | | | | | 52.1 | 62.9 | 62.4 | 69.1 | 42.1 | 69.9 | | |
| | TB defaulter rate (new sm+) | | | | | | | | 7.2 | 5.9 | 5.9 | | |
| | TB successful treatment rate (all TB) | | | | | 61.0 | 65.9 | 69.3 | 67.4 | 39.2 | 75.6 | | |
| 10_HIV | Adult remaining on ART at end of the month - total | | | | | | | | | | 24,437.0 | 127,458.0 | 199,538.0 |
| | Child under 15 years remaining on ART at end of the month - total | | | | | | | | | | 2,116.0 | 8,752.0 | 12,501.0 |
| | Male condom distribution rate | 5.9 | 3.0 | 5.3 | 7.1 | 10.3 | 10.9 | 13.4 | 16.3 | 20.2 | 19.4 | 21.6 | |
| 11_Socio-demogr... | Adults (18-65) no secondary schooling | | | | | | | | | | 25.0 | | |
| | Medical scheme coverage (ave) | | | | | | | | 13.3 | | | | |
| | Percentage of people without piped water in dwelling or within 200m | | | | | | | | | | 19.6 | | |
| 12_Burden of disease | Percentage of deaths garbage codes | | | | | | | 14.6 | 17.0 | | | | |
| | Percentage of deaths ill-defined | | | | | | | 9.0 | 8.2 | | | | |
| | Percentage of Years of Life Lost (YLL) due to HIV and TB | | | | | | | 28.1 | 29.1 | | | | |
| | Percentage of Years of Life Lost (YLL) due to injuries | | | | | | | 8.8 | 10.1 | | | | |
| | Percentage of Years of Life Lost (YLL) due to non-communicable diseases | | | | | | | 24.2 | 26.5 | | | | |
| | Percentage of YLLs due to communicable, maternal, perinatal, nutrition causes | | | | | | | 38.8 | 34.3 | | | | |
| Extra | Antenatal client HIV prevalence in facility | | | | | | | | | 37.2 | 39.0 | 36.5 | |
| | Area (km2) | | | | | | | | | | 76,495.0 | | |
| | Baby initiated on HAART under 18 months rate | | | | | | | | | 213.2 | 130.4 | | |
| | Baby PCR test around 6 weeks uptake rate | | | | | | 0.6 | 40.8 | 67.1 | 64.0 | 88.9 | 102.2 | |
| | Facility crude death rate | | | | | | | | 6.8 | 6.5 | 6.2 | 6.2 | |
| | PCV 3rd dose coverage (annualised) | | | | | | | | 0.1 | 23.5 | 53.8 | 91.4 | 97.6 |
| | Population density | 44.3 | 44.8 | 45.3 | 45.7 | 46.0 | 46.4 | 46.7 | 47.1 | 47.5 | 47.9 | 48.2 | |
| | Population total (Census) | | | | | | | | | | 4,039,939.0 | | |
| | Population total (DHIS) | | | | | | | | | | 3,661,839.0 | 3,689,833.0 | |
| | Population under 1 year (Census) | | | | | | | | | | 94,419.0 | | |
| | Population under 1 year (DHIS) | | | | | | | | | | 77,776.0 | | |
| | RV 2nd dose coverage (annualised) | | | | | | | | 0.1 | 39.3 | 60.6 | 91.6 | 101.1 |
| | Usable beds per 1 000 population | | | | | | | | | 1.4 | 1.3 | 1.2 | 1.2 |

Section B: Profile South Africa

Province page: NC, Northern Cape

| Category | Indic | Year of IndYear | | | | | | | | | | | |
|----------------------------------|--|-----------------|------|---------|---------|---------|---------|---------|---------|---------|-------------|-------------|----------|
| | | 2002 | 2003 | 2004 | 2005 | 2006 | 2007 | 2008 | 2009 | 2010 | 2011 | 2012 | 2013 |
| 01_Finance | Percentage of DHS expenditure on district hospitals | | | 48.1 | 47.0 | 45.3 | 45.0 | 42.3 | 42.9 | 38.7 | 32.0 | 28.0 | |
| | Percentage of DHS expenditure on district management | | | 4.6 | 6.0 | 5.3 | 7.0 | 4.9 | 4.6 | 6.5 | 8.0 | 9.3 | |
| | Percentage of DHS expenditure on PHC | | | 47.3 | 47.0 | 49.4 | 48.1 | 52.9 | 52.5 | 54.7 | 60.0 | 62.7 | |
| | Provincial and LG expenditure on District Health Services per capita (uninsured) | | | 577.0 | 831.0 | 893.0 | 959.0 | 1,091.0 | 1,194.0 | 1,440.0 | 1,429.0 | 1,354.0 | |
| | Provincial expenditure per PHC headcount | | | 85.1 | 123.4 | 135.0 | 147.7 | 164.1 | 182.7 | 224.6 | 255.0 | 247.9 | |
| | Provincial PHC expenditure per capita (uninsured) | | | 272.0 | 394.0 | 466.0 | 506.0 | 586.0 | 628.0 | 800.0 | 870.0 | 860.0 | |
| 02_Management PHC | PHC supervisor visit rate (fixed clinic/CHC/CDC) | | | | 29.3 | 32.1 | 29.3 | 28.8 | 23.3 | 18.1 | 26.4 | 29.0 | |
| 03_Management Inpatients | Average length of stay (District Hospitals) | 3.3 | 2.9 | 3.0 | 2.9 | 2.6 | 2.3 | 2.1 | 2.5 | 2.3 | 2.3 | 2.4 | |
| | Expenditure per patient day equivalent (District Hospitals) | | | 1,057.0 | 1,171.0 | 1,248.0 | 1,316.0 | 1,331.0 | 1,456.0 | 1,629.0 | 1,908.0 | 1,855.0 | |
| | Inpatient bed utilisation rate (District Hospitals) | 61.2 | 65.7 | 71.9 | 68.7 | 68.3 | 67.4 | 71.7 | 62.8 | 62.1 | 58.6 | 62.5 | |
| | OPD new client not referred rate (District Hospitals) | | | | | | | | | 76.0 | 70.1 | 68.7 | |
| | Ratio Ambulatory to Inpatient days (District Hospitals) | | | | | | | | | 1.1 | 1.1 | 0.9 | |
| 04_Delivery | Caesarean section rate (District Hospitals) | 11.9 | 13.1 | 13.0 | 11.2 | 11.0 | 10.7 | 11.4 | 13.1 | 12.1 | 13.7 | 13.3 | |
| | Delivery in facility under 18 years rate | 9.4 | 9.6 | 10.3 | 10.3 | 10.3 | 10.4 | 9.7 | 9.8 | 9.3 | 10.1 | 10.2 | |
| | Inpatient early neonatal death rate | 12.2 | 12.9 | 11.6 | 8.7 | 11.8 | 11.8 | 11.2 | 10.6 | 12.0 | 13.0 | 11.7 | |
| | Maternal mortality in facility ratio | | | | | | | 4.6 | | 90.7 | 147.7 | 144.6 | |
| | Maternal mortality ratio institutional | | | | | | | 273.9 | 267.1 | 248.2 | | | |
| | Stillbirth rate in facility | 35.4 | 29.5 | 31.0 | 22.4 | 23.8 | 24.1 | 21.7 | 22.0 | 27.3 | 25.0 | 25.3 | |
| 05_Child Health | Child under 5 years diarrhoea case fatality rate | | | | | | 7.5 | 7.9 | 6.7 | 3.6 | 3.9 | 2.1 | |
| | Child under 5 years diarrhoea with dehydration incidence | | | | | | | | 16.2 | 14.0 | 9.1 | 12.9 | |
| | Child under 5 years pneumonia case fatality rate | | | | | | | | 3.9 | 4.1 | 2.8 | 4.4 | |
| | Child under 5 years pneumonia incidence | | | | | | 120.0 | 116.2 | 114.7 | 104.3 | 92.2 | 85.0 | |
| | Child under 5 years severe acute malnutrition case fatality rate | | | | | | | | 28.9 | 13.0 | 10.9 | 8.4 | |
| | Child under 5 years severe acute malnutrition incidence | | | | | | | | 5.6 | 5.1 | 4.4 | 7.3 | |
| | Vitamin A coverage 12 to 59 months | | 12.8 | 16.7 | 22.2 | 31.8 | 28.4 | 32.8 | 27.2 | 26.2 | 32.5 | 36.4 | |
| | Immunisation coverage under 1 year | 67.7 | 70.9 | 74.3 | 81.2 | 88.3 | 88.3 | 91.4 | 92.4 | 91.9 | 95.1 | 98.8 | |
| 06_Immunisation | Immunisation coverage under 1 year - adjusted | | | | | | | | | | 83.3 | | |
| | Measles 1st to 2nd drop-out rate | 12.8 | 14.9 | 13.1 | 15.5 | 9.8 | 11.7 | 12.1 | 6.9 | 10.4 | 15.3 | 13.4 | |
| 07_PMTCT | Antenatal client initiated on ART rate | | | | | | | | | 51.0 | 55.3 | 83.1 | |
| | Antenatal visits before 20 weeks rate | 39.9 | 44.6 | 45.2 | 43.0 | 45.5 | 44.1 | 46.4 | 47.1 | 51.0 | 52.9 | 52.9 | |
| | Early infant HIV diagnosis coverage | | | | | | | | | 55.3 | 65.1 | 71.1 | |
| | HIV prevalence among antenatal clients (survey) | 15.2 | 16.8 | 17.6 | 18.3 | 16.1 | 16.4 | 16.2 | 17.2 | 18.4 | 17.0 | | |
| | Infant 1st PCR test positive around 6 weeks rat | | | | | | | | 12.8 | 9.3 | 6.6 | 5.3 | 2.7 |
| | Percentage PCR tests under 2 months positive | | | | | | | 10.7 | 9.3 | 6.0 | 3.4 | 3.1 | 2.9 |
| 08_Reproductive health | Cervical cancer screening coverage (annualised) | 12.8 | 17.7 | 20.3 | 26.9 | 35.1 | 30.4 | 30.1 | 35.1 | 37.9 | 32.4 | 31.6 | |
| | Couple year protection rate (annualised) | 27.5 | 30.2 | 29.7 | 30.6 | 32.4 | 32.8 | 34.4 | 33.6 | 36.0 | 35.1 | 36.2 | |
| 09_TB_CF | Incidence (diagnosed cases) of TB - all types | | | | | 778.0 | 859.0 | 935.0 | 933.0 | 892.0 | 839.0 | 712.0 | |
| | Incidence (diagnosed cases) of TB - new PTB sm+ | | | | | | | | 298.1 | 293.2 | 315.3 | 308.4 | |
| | Number of TB cases reported (new PTB sm+) | | | | | | | | 3,419.0 | 3,381.0 | 3,651.0 | 3,585.0 | |
| | TB case finding index | | | | | | | | 2.5 | 2.7 | 2.6 | 2.3 | |
| 09_TB_TO | TB cure rate (new sm+) | | | | | 66.8 | 61.9 | 65.0 | 68.4 | 70.7 | 68.3 | | |
| | TB defaulter rate (new sm+) | | | | | | | | 5.6 | 6.5 | 7.4 | | |
| | TB successful treatment rate (all TB) | | | | | | | | 73.5 | 72.3 | | | |
| 10_HIV | Adult remaining on ART at end of the month - total | | | | | | | | | | 3,321.0 | 17,348.0 | 23,377.0 |
| | Child under 15 years remaining on ART at end of the month - total | | | | | | | | | | 1,381.0 | 2,435.0 | 3,001.0 |
| | Male condom distribution rate | 3.4 | 4.4 | 4.8 | 5.2 | 5.9 | 5.8 | 6.0 | 6.7 | 9.5 | 8.3 | 8.0 | |
| 11_Socio-demogr.. | Adults (18-65) no secondary schooling | | | | | | | | | | 30.8 | | |
| | Medical scheme coverage (ave) | | | | | | | | 15.4 | | | | |
| | Percentage of people without piped water in dwelling or within 200m | | | | | | | | | | 8.5 | | |
| 12_Burden of disease | Percentage of deaths garbage codes | | | | | | | | 13.7 | 14.6 | | | |
| | Percentage of deaths ill-defined | | | | | | | | 15.3 | 15.4 | | | |
| | Percentage of Years of Life Lost (YLL) due to HIV and TB | | | | | | | | 25.3 | 26.7 | | | |
| | Percentage of Years of Life Lost (YLL) due to injuries | | | | | | | | 10.2 | 10.5 | | | |
| | Percentage of Years of Life Lost (YLL) due to non-communicable diseases | | | | | | | | 33.5 | 36.3 | | | |
| | Percentage of YLLs due to communicable, maternal, perinatal, nutrition causes | | | | | | | | 30.9 | 26.5 | | | |
| Extra | Antenatal client HIV prevalence in facility | | | | | | | | | 12.7 | 12.2 | 15.8 | |
| | Area (km2) | | | | | | | | | | 372,889.0 | | |
| | Baby initiated on HAART under 18 months rate | | | | | | | | | 31.4 | 46.1 | | |
| | Baby PCR test around 6 weeks uptake rate | | | | | | | 19.4 | 79.1 | 80.2 | 95.8 | 94.0 | |
| | Facility crude death rate | | | | | | | | 4.8 | 4.6 | 4.3 | 5.3 | |
| | PCV 3rd dose coverage (annualised) | | | | | | | | 25.8 | 80.4 | 92.6 | 100.6 | |
| | Population density | 2.9 | 2.9 | 3.0 | 3.0 | 3.0 | 3.0 | 3.1 | 3.1 | 3.1 | 3.1 | 3.1 | |
| | Population total (Census) | | | | | | | | | | 1,145,861.0 | | |
| | Population total (DHIS) | | | | | | | | | | 1,158,029.0 | 1,162,539.0 | |
| | Population under 1 year (Census) | | | | | | | | | | 24,678.0 | | |
| | Population under 1 year (DHIS) | | | | | | | | | | 21,690.0 | | |
| | RV 2nd dose coverage (annualised) | | | | | | | | | 33.2 | 83.8 | 101.1 | 106.7 |
| Usable beds per 1 000 population | | | | | | | | | 1.8 | 1.5 | 1.5 | 1.5 | |

Province page: NW, North West

| Category | Indic | Year of IndYear | | | | | | | | | | | |
|--------------------------|--|-----------------|------|------|-------|---------|---------|---------|----------|----------|-------------|-------------|-----------|
| | | 2002 | 2003 | 2004 | 2005 | 2006 | 2007 | 2008 | 2009 | 2010 | 2011 | 2012 | 2013 |
| 01_Finance | Percentage of DHS expenditure on district hospitals | | | | 35.7 | 38.1 | 36.3 | 32.4 | 28.9 | 28.8 | 29.9 | 26.9 | |
| | Percentage of DHS expenditure on district management | | | | 9.8 | 10.0 | 9.3 | 8.3 | 7.2 | 6.6 | 6.9 | 9.5 | |
| | Percentage of DHS expenditure on PHC | | | | 54.5 | 51.9 | 54.4 | 59.3 | 63.9 | 64.6 | 63.1 | 63.6 | |
| | Provincial and LG expenditure on District Health Services per capita (uninsured) | | | 20.0 | 749.0 | 642.0 | 870.0 | 922.0 | 1,033.0 | 1,136.0 | 1,179.0 | 1,247.0 | |
| | Provincial expenditure per PHC headcount | | | 7.0 | 137.8 | 123.8 | 177.0 | 193.0 | 228.7 | 270.5 | 283.9 | 301.3 | |
| | Provincial PHC expenditure per capita (uninsured) | | | 20.0 | 415.0 | 342.0 | 472.0 | 549.0 | 660.0 | 743.0 | 755.0 | 802.0 | |
| 02_Management PHC | PHC supervisor visit rate (fixed clinic/CHC/CDC) | | | | 56.6 | 52.9 | 45.7 | 46.0 | 51.4 | 56.9 | 60.4 | 69.8 | |
| 03_Management Inpatients | Average length of stay (District Hospitals) | 4.0 | 3.9 | 3.8 | 3.7 | 3.8 | 3.9 | 3.7 | 4.1 | 4.1 | 3.5 | 3.7 | |
| | Expenditure per patient day equivalent (District Hospitals) | | | | | 1,278.0 | 1,530.0 | 1,586.0 | 1,695.0 | 1,826.0 | 1,988.0 | 2,058.0 | |
| | Inpatient bed utilisation rate (District Hospitals) | 57.0 | 55.9 | 54.3 | 58.3 | 58.4 | 52.7 | 58.6 | 60.8 | 60.6 | 59.8 | 60.2 | |
| | OPD new client not referred rate (District Hospitals) | | | | | | | | | 32.6 | 28.6 | 45.0 | |
| | Ratio Ambulatory to Inpatient days (District Hospitals) | | | | | | | | | 1.0 | 1.1 | 1.1 | |
| | | | | | | | | | | | | | |
| 04_Delivery | Caesarean section rate (District Hospitals) | 9.7 | 10.2 | 8.6 | 9.5 | 12.6 | 14.2 | 14.3 | 15.8 | 18.7 | 18.2 | 20.2 | |
| | Delivery in facility under 18 years rate | 8.7 | 8.9 | 8.2 | 8.8 | 9.5 | 10.1 | 9.6 | 8.3 | 8.1 | 7.2 | 7.2 | |
| | Inpatient early neonatal death rate | 11.1 | 12.5 | 11.5 | 11.9 | 11.0 | 9.7 | 9.8 | 10.2 | 12.8 | 11.2 | 10.4 | |
| | Maternal mortality in facility ratio | | | | | | | | | 67.9 | 204.6 | 189.7 | 166.6 |
| | Maternal mortality ratio institutional | | | | | | | 162.6 | 278.5 | 239.6 | | | |
| | Stillbirth rate in facility | 30.2 | 30.6 | 24.2 | 23.7 | 24.9 | 23.7 | 23.5 | 24.7 | 25.2 | 24.6 | 23.5 | |
| 05_Child Health | Child under 5 years diarrhoea case fatality rate | | | | | | 10.8 | 9.0 | 8.1 | 5.6 | 4.9 | 5.8 | |
| | Child under 5 years diarrhoea with dehydration incidence | | | | | | | | | 13.4 | 12.4 | 9.2 | 7.7 |
| | Child under 5 years pneumonia case fatality rate | | | | | | | | | 7.3 | 7.0 | 5.0 | 5.1 |
| | Child under 5 years pneumonia incidence | | | | | | | 91.2 | 102.1 | 109.3 | 82.8 | 70.0 | 44.5 |
| | Child under 5 years severe acute malnutrition case fatality rate | | | | | | | | | 19.0 | 14.6 | 11.1 | 11.2 |
| | Child under 5 years severe acute malnutrition incidence | | | | | | | | | 7.2 | 6.7 | 5.4 | 5.5 |
| | Vitamin A coverage 12 to 59 months | | 6.7 | 12.7 | 18.7 | 20.6 | 23.5 | 30.9 | 26.1 | 27.0 | 36.8 | 35.8 | |
| 06_Immunisation | Immunisation coverage under 1 year | 59.4 | 63.5 | 63.8 | 71.5 | 68.0 | 78.8 | 82.7 | 86.4 | 77.3 | 82.9 | 88.8 | |
| | Immunisation coverage under 1 year - adjusted | | | | | | | | | | 63.1 | | |
| | Measles 1st to 2nd drop-out rate | 18.8 | 13.9 | 15.8 | 19.4 | 15.1 | 25.5 | 20.1 | 15.6 | 21.2 | 19.6 | 20.0 | |
| 07_PMTCT | Antenatal client initiated on ART rate | | | | | | | | | 68.1 | 72.8 | 74.7 | |
| | Antenatal visits before 20 weeks rate | 27.2 | 33.2 | 31.7 | 32.4 | 31.8 | 33.2 | 36.4 | 37.2 | 39.6 | 42.3 | 44.1 | |
| | Early infant HIV diagnosis coverage | | | | | | | | | 48.8 | 57.0 | 61.1 | |
| | HIV prevalence among antenatal clients (survey) | 24.8 | 30.9 | 26.2 | 32.1 | 29.1 | 30.3 | 30.6 | 30.0 | 29.5 | 30.2 | | |
| | Infant 1st PCR test positive around 6 weeks rat | | | | | | | 14.9 | 16.6 | 13.3 | 6.1 | 3.9 | 2.8 |
| | Percentage PCR tests under 2 months positive | | | | | | | 12.5 | 8.2 | 5.5 | 3.7 | 2.7 | 2.5 |
| 08_Reproductive health | Cervical cancer screening coverage (annualised) | 0.2 | 0.2 | 0.6 | 4.0 | 18.1 | 36.4 | 51.7 | 47.0 | 48.4 | 48.8 | 49.0 | |
| | Couple year protection rate (annualised) | 27.2 | 27.5 | 26.9 | 28.9 | 28.9 | 23.9 | 23.9 | 26.0 | 26.3 | 23.6 | 32.2 | |
| 09_TB_CF | Incidence (diagnosed cases) of TB - all types | | | | | 792.0 | 786.0 | 815.0 | 904.0 | 894.0 | 882.0 | 720.0 | |
| | Incidence (diagnosed cases) of TB - new PTB sm+ | | | | | | | | 316.5 | 310.5 | 286.9 | 262.0 | |
| | Number of TB cases reported (new PTB sm+) | | | | | | | | 10,633.0 | 10,508.0 | 9,770.0 | 8,977.0 | |
| | TB case finding index | | | | | | | | 1.6 | 2.7 | 2.6 | 2.4 | |
| 09_TB_TO | TB cure rate (new sm+) | | | | | 54.0 | 53.4 | 52.3 | 63.5 | 66.4 | 68.9 | | |
| | TB defaulter rate (new sm+) | | | | | | | | 8.3 | 8.8 | 7.7 | | |
| | TB successful treatment rate (all TB) | | | | | 62.5 | 61.2 | 58.2 | 65.1 | 67.2 | 67.8 | | |
| 10_HIV | Adult remaining on ART at end of the month - total | | | | | | | | | | 72,696.0 | 115,058.0 | 138,289.0 |
| | Child under 15 years remaining on ART at end of the month - total | | | | | | | | | | 6,281.0 | 7,445.0 | 9,093.0 |
| | Male condom distribution rate | 4.3 | 4.9 | 5.7 | 6.2 | 6.1 | 6.2 | 6.7 | 7.2 | 8.3 | 6.0 | 17.7 | |
| 11_Socio-demogr... | Adults (18-65) no secondary schooling | | | | | | | | | | 29.6 | | |
| | Medical scheme coverage (ave) | | | | | | | | 13.7 | | | | |
| | Percentage of people without piped water in dwelling or within 200m | | | | | | | | | | 16.7 | | |
| 12_Burden of disease | Percentage of deaths garbage codes | | | | | | | 15.1 | 15.8 | | | | |
| | Percentage of deaths ill-defined | | | | | | | 14.3 | 14.1 | | | | |
| | Percentage of Years of Life Lost (YLL) due to HIV and TB | | | | | | | 26.0 | 27.1 | | | | |
| | Percentage of Years of Life Lost (YLL) due to injuries | | | | | | | 9.0 | 8.4 | | | | |
| | Percentage of Years of Life Lost (YLL) due to non-communicable diseases | | | | | | | 27.8 | 29.9 | | | | |
| | Percentage of YLLs due to communicable, maternal, perinatal, nutrition causes | | | | | | | 37.2 | 34.6 | | | | |
| Extra | Antenatal client HIV prevalence in facility | | | | | | | | | 37.2 | 34.3 | 29.6 | |
| | Area (km2) | | | | | | | | | | 104,882.0 | | |
| | Baby initiated on HAART under 18 months rate | | | | | | | | | 43.4 | 48.5 | | |
| | Baby PCR test around 6 weeks uptake rate | | | | | | 69.2 | 79.2 | 80.4 | 97.0 | 103.4 | 103.0 | |
| | Facility crude death rate | | | | | | | | 5.6 | 6.0 | 5.6 | 6.5 | |
| | PCV 3rd dose coverage (annualised) | | | | | | | 0.1 | 24.5 | 62.0 | 86.2 | 95.8 | |
| | Population density | 28.7 | 29.0 | 29.3 | 29.6 | 31.2 | 31.5 | 31.8 | 32.0 | 32.3 | 32.5 | 32.7 | |
| | Population total (Census) | | | | | | | | | | 3,509,953.0 | | |
| | Population total (DHIS) | | | | | | | | | | 3,405,416.0 | 3,426,110.0 | |
| | Population under 1 year (Census) | | | | | | | | | | 83,901.0 | | |
| | Population under 1 year (DHIS) | | | | | | | | | | 64,316.0 | | |
| | RV 2nd dose coverage (annualised) | | | | | | | 0.0 | 29.7 | 61.8 | 87.9 | 97.7 | |
| | Usable beds per 1 000 population | | | | | | | | 1.4 | 1.4 | 1.4 | 1.4 | |

Section B: Profile South Africa

Province page: WC, Western Cape

| Category | Indic | Year of IndYear | | | | | | | | | | | |
|----------------------------------|--|-----------------|------|-------|-------|-------|---------|---------|----------|----------|-------------|-------------|-----------|
| | | 2002 | 2003 | 2004 | 2005 | 2006 | 2007 | 2008 | 2009 | 2010 | 2011 | 2012 | 2013 |
| 01_Finance | Percentage of DHS expenditure on district hospitals | | | 27.9 | 26.6 | 25.5 | 34.2 | 34.8 | 36.1 | 35.2 | 35.1 | 37.6 | |
| | Percentage of DHS expenditure on district management | | | 2.1 | 5.6 | 5.3 | 4.1 | 5.6 | 5.8 | 5.6 | 5.3 | 4.8 | |
| | Percentage of DHS expenditure on PHC | | | 70.0 | 67.8 | 69.2 | 61.7 | 59.6 | 58.0 | 59.2 | 59.6 | 57.7 | |
| | Provincial and LG expenditure on District Health Services per capita (uninsured) | | | 688.0 | 757.0 | 804.0 | 970.0 | 1,034.0 | 1,175.0 | 1,309.0 | 1,361.0 | 1,400.0 | |
| | Provincial expenditure per PHC headcount | | | 136.0 | 143.6 | 163.0 | 182.6 | 166.0 | 183.6 | 209.3 | 223.8 | 233.5 | |
| | Provincial PHC expenditure per capita (uninsured) | | | 508.0 | 526.0 | 561.0 | 627.0 | 624.0 | 706.0 | 805.0 | 842.0 | 825.0 | |
| 02_Management PHC | PHC supervisor visit rate (fixed clinic/CHC/CDC) | | | | | 29.8 | 38.4 | 60.5 | 73.7 | 76.4 | 74.3 | 79.6 | |
| 03_Management Inpatients | Average length of stay (District Hospitals) | 3.2 | 3.1 | 3.1 | 3.1 | 3.2 | 3.3 | 3.1 | 2.6 | 3.0 | 3.1 | 3.2 | |
| | Expenditure per patient day equivalent (District Hospitals) | | | 691.0 | 698.0 | 581.0 | 1,087.0 | 1,087.0 | 1,587.0 | 1,729.0 | 1,593.0 | 1,647.0 | |
| | Inpatient bed utilisation rate (District Hospitals) | 72.6 | 70.0 | 77.8 | 78.3 | 81.6 | 81.9 | 82.1 | 78.5 | 77.3 | 84.7 | 87.6 | |
| | OPD new client not referred rate (District Hospitals) | | | | | | | | | | | | |
| | Ratio Ambulatory to Inpatient days (District Hospitals) | | | | | | | | | 0.9 | 1.2 | 1.0 | |
| 04_Delivery | Caesarean section rate (District Hospitals) | 17.2 | 17.8 | 17.6 | 18.7 | 19.9 | 20.4 | 20.7 | 21.9 | 23.3 | 23.7 | 24.1 | |
| | Delivery in facility under 18 years rate | 8.2 | 7.8 | 8.2 | 8.3 | 8.8 | 8.5 | 7.8 | 7.3 | 6.8 | 6.7 | 6.5 | |
| | Inpatient early neonatal death rate | 5.1 | 4.7 | 5.8 | 6.5 | 6.9 | 6.3 | 5.4 | 5.2 | 4.9 | 5.1 | 6.2 | |
| | Maternal mortality in facility ratio | | | | | | | | | | 28.6 | 8.7 | |
| | Maternal mortality ratio institutional | | | | | | | 61.7 | 118.5 | 92.0 | | | |
| | Stillbirth rate in facility | 21.9 | 17.0 | 18.0 | 18.8 | 20.1 | 20.6 | 20.7 | 22.9 | 20.8 | 19.1 | 17.6 | |
| 05_Child Health | Child under 5 years diarrhoea case fatality rate | | | | | | 1.1 | 0.4 | 0.4 | 0.3 | 0.2 | 0.1 | |
| | Child under 5 years diarrhoea with dehydration incidence | | | | | | | | 30.3 | 19.1 | 17.2 | 16.8 | |
| | Child under 5 years pneumonia case fatality rate | | | | | | | | 0.3 | 0.7 | 0.5 | | |
| | Child under 5 years pneumonia incidence | | | | | | 90.9 | 86.4 | 83.3 | 68.7 | 72.1 | 63.0 | |
| | Child under 5 years severe acute malnutrition case fatality rate | | | | | | | | 3.2 | 1.8 | 3.9 | | |
| | Child under 5 years severe acute malnutrition incidence | | | | | | | | 5.9 | 2.7 | 3.2 | 3.0 | |
| | Vitamin A coverage 12 to 59 months | | 0.0 | | 11.1 | 26.5 | 33.6 | 32.0 | 38.2 | 32.3 | 38.0 | 39.1 | |
| 06_Immunisation | Immunisation coverage under 1 year | 73.7 | 76.5 | 79.3 | 86.4 | 97.0 | 99.2 | 101.6 | 102.2 | 90.8 | 89.5 | 89.0 | |
| | Immunisation coverage under 1 year - adjusted | | | | | | | | | 79.2 | | | |
| | Measles 1st to 2nd drop-out rate | 7.7 | 8.7 | 9.1 | 11.8 | 15.2 | 19.7 | 21.4 | 19.3 | 16.4 | 16.8 | 23.1 | |
| 07_PMTCT | Antenatal client initiated on ART rate | | | | | | | | | 98.5 | 97.0 | 94.2 | |
| | Antenatal visits before 20 weeks rate | 37.7 | 37.4 | 38.0 | 38.6 | 38.3 | 38.0 | 42.6 | 46.4 | 52.7 | 56.2 | 58.2 | |
| | Early infant HIV diagnosis coverage | | | | | | | | | 65.3 | 71.6 | 75.2 | |
| | HIV prevalence among antenatal clients (survey) | 12.4 | 13.1 | 15.4 | 15.7 | 15.2 | 15.3 | 16.1 | 16.9 | 18.5 | 18.2 | | |
| | Infant 1st PCR test positive around 6 weeks rat | | | | | | 4.8 | 4.1 | 3.3 | 2.7 | 2.1 | 1.7 | |
| | Percentage PCR tests under 2 months positive | | | | | | 6.3 | 4.7 | 4.2 | 3.1 | 2.0 | 1.8 | |
| 08_Reproductive health | Cervical cancer screening coverage (annualised) | 37.1 | 33.2 | 32.9 | 37.0 | 34.7 | 38.4 | 52.9 | 57.9 | 65.8 | 64.4 | 61.3 | |
| | Couple year protection rate (annualised) | 33.2 | 34.6 | 38.9 | 39.7 | 53.6 | 58.4 | 56.5 | 59.4 | 58.8 | 58.3 | 70.2 | |
| 09_TB_CF | Incidence (diagnosed cases) of TB - all types | | | | | 959.0 | 938.0 | 948.0 | 930.0 | 910.0 | 863.0 | 800.0 | |
| | Incidence (diagnosed cases) of TB - new PTB sm+ | | | | | | | | 269.5 | 284.4 | 264.6 | 242.1 | |
| | Number of TB cases reported (new PTB sm+) | | | | | | | | 14,511.0 | 15,515.0 | 14,697.0 | 13,659.0 | |
| | TB case finding index | | | | | | | | 2.0 | 2.0 | 2.0 | 1.9 | |
| 09_TB_TO | TB cure rate (new sm+) | | | | | 75.7 | 77.4 | 78.8 | 79.8 | 81.3 | 81.4 | | |
| | TB defaulter rate (new sm+) | | | | | | | | 7.1 | 6.8 | 6.9 | | |
| | TB successful treatment rate (all TB) | | | | | 77.1 | 79.2 | 79.9 | 80.2 | 81.6 | 81.5 | | |
| 10_HIV | Adult remaining on ART at end of the month - total | | | | | | | | | | 85,223.0 | 108,290.0 | 126,348.0 |
| | Child under 15 years remaining on ART at end of the month - total | | | | | | | | | | 5,597.0 | 6,903.0 | 7,449.0 |
| | Male condom distribution rate | 8.5 | 10.6 | 14.9 | 19.7 | 31.7 | 38.7 | 34.5 | 38.6 | 45.8 | 45.7 | 56.1 | |
| 11_Socio-demogr.. | Adults (18-65) no secondary schooling | | | | | | | | | | 17.5 | | |
| | Medical scheme coverage (ave) | | | | | | | | 25.5 | | | | |
| | Percentage of people without piped water in dwelling or within 200m | | | | | | | | | | 2.8 | | |
| 12_Burden of disease | Percentage of deaths garbage codes | | | | | | | | 18.2 | 16.2 | | | |
| | Percentage of deaths ill-defined | | | | | | | | 8.6 | 7.8 | | | |
| | Percentage of Years of Life Lost (YLL) due to HIV and TB | | | | | | | | 23.4 | 23.5 | | | |
| | Percentage of Years of Life Lost (YLL) due to injuries | | | | | | | | 17.6 | 15.8 | | | |
| | Percentage of Years of Life Lost (YLL) due to non-communicable diseases | | | | | | | | 45.4 | 47.5 | | | |
| | Percentage of YLLs due to communicable, maternal, perinatal, nutrition causes | | | | | | | | 13.6 | 13.2 | | | |
| Extra | Antenatal client HIV prevalence in facility | | | | | | | | | 14.0 | 11.7 | 11.6 | |
| | Area (km2) | | | | | | | | | | 129,462.0 | | |
| | Baby initiated on HAART under 18 months rate | | | | | | | | | | | | |
| | Baby PCR test around 6 weeks uptake rate | | | | | | 88.0 | 93.1 | 95.8 | 93.9 | 37.0 | 55.0 | |
| | Facility crude death rate | | | | | | | | 2.6 | 2.9 | 2.8 | 3.7 | |
| | PCV 3rd dose coverage (annualised) | | | | | | | | 16.2 | 71.0 | 84.5 | 89.0 | |
| | Population density | 36.1 | 36.9 | 37.7 | 38.5 | 39.4 | 40.1 | 40.8 | 41.6 | 42.1 | 42.9 | 43.6 | |
| | Population total (Census) | | | | | | | | | | 5,822,734.0 | | |
| | Population total (DHIS) | | | | | | | | | | 5,553,968.0 | 5,641,880.0 | |
| | Population under 1 year (Census) | | | | | | | | | | 117,651.0 | | |
| | Population under 1 year (DHIS) | | | | | | | | | | 103,623.0 | | |
| | RV 2nd dose coverage (annualised) | | | | | | | | | 19.7 | 63.4 | 83.6 | 87.1 |
| Usable beds per 1 000 population | | | | | | | | | 2.0 | 2.0 | 1.9 | 1.9 | |

Table 2: SA averages, 2012/13

| | | Year of IndYear | | | | | | | | | | | |
|-----------------------------------|--|-----------------|------|---------|---------|---------|---------|---------|-----------|-------------|--------------|--------------|------|
| | | 2002 | 2003 | 2004 | 2005 | 2006 | 2007 | 2008 | 2009 | 2010 | 2011 | 2012 | 2013 |
| 01_Finance | Percentage of DHS expenditure on district hospitals | | | 51.5 | 47.9 | 46.6 | 45.5 | 42.6 | 42.2 | 40.3 | 39.1 | 37.5 | |
| | Percentage of DHS expenditure on district management | | | 5.7 | 4.8 | 4.8 | 5.3 | 5.7 | 5.2 | 5.2 | 5.5 | 5.8 | |
| | Percentage of DHS expenditure on PHC | | | 42.8 | 47.3 | 48.6 | 49.2 | 51.6 | 52.6 | 54.5 | 55.4 | 56.7 | |
| | Provincial and LG expenditure on District Health Services per capita (uninsured) | | | 659.1 | 765.3 | 804.3 | 905.6 | 981.8 | 1,101.9 | 1,202.5 | 1,257.5 | 1,327.3 | |
| | Provincial expenditure per PHC headcount | | | 131.7 | 157.6 | 163.7 | 186.6 | 185.9 | 204.9 | 236.7 | 237.4 | 255.2 | |
| | Provincial PHC expenditure per capita (uninsured) | | | 324.0 | 403.4 | 433.6 | 487.6 | 525.8 | 598.5 | 682.9 | 722.2 | 780.0 | |
| 02_Management (Inpatient days) | PHC supervisor visit rate (fixed clinic/CHC/CDC) | | | 26.7 | 36.8 | 48.0 | 61.3 | 69.3 | 68.4 | 74.1 | 76.0 | | |
| | Average length of stay (District Hospitals) | 4.8 | 4.6 | 4.3 | 4.4 | 4.4 | 4.5 | 4.4 | 4.3 | 4.3 | 4.3 | 4.2 | |
| | Expenditure per patient day equivalent (District Hospitals) | | | 1,093.4 | 1,174.3 | 1,204.7 | 1,381.2 | 1,415.8 | 1,532.3 | 1,713.8 | 1,740.2 | 1,823.3 | |
| 03_Management (Inpatient days) | Inpatient bed utilisation rate (District Hospitals) | 60.7 | 61.0 | 62.2 | 64.1 | 64.8 | 65.4 | 68.0 | 67.6 | 64.7 | 67.2 | 67.3 | |
| | OPD new client not referred rate (District Hospitals) | | | | | | | | 65.6 | 64.6 | 64.1 | | |
| | Ratio Ambulatory to Inpatient days (District Hospitals) | | | | | | | | 1.2 | 1.3 | 1.3 | | |
| 04_Delivery | Caesarean section rate (District Hospitals) | 12.7 | 12.7 | 13.3 | 13.9 | 15.1 | 15.6 | 16.3 | 17.6 | 18.5 | 19.9 | 20.8 | |
| | Delivery in facility under 18 years rate | 9.3 | 8.8 | 8.9 | 9.3 | 9.4 | 9.2 | 8.7 | 8.1 | 8.0 | 8.1 | 7.7 | |
| | Inpatient early neonatal death rate | 9.4 | 10.6 | 10.5 | 9.9 | 9.6 | 8.7 | 9.1 | 9.5 | 10.0 | 10.2 | 10.2 | |
| | Maternal mortality in facility ratio | | | | | | 74.5 | 70.1 | 93.4 | 138.5 | 144.9 | 132.9 | |
| | Maternal mortality ratio institutional | | | | | | | 165.6 | 189.5 | 182.8 | | | |
| | Stillbirth rate in facility | 28.5 | 27.0 | 24.4 | 23.9 | 23.8 | 23.4 | 22.3 | 23.0 | 22.7 | 22.5 | 21.8 | |
| 05_Child Health | Child under 5 years diarrhoea case fatality rate | | | | | | 8.9 | 8.4 | 7.1 | 7.0 | 4.6 | 4.3 | |
| | Child under 5 years diarrhoea with dehydration incidence | | | | | | | | 21.1 | 17.1 | 14.0 | 12.0 | |
| | Child under 5 years pneumonia case fatality rate | | | | | | | | 6.6 | 5.8 | 4.2 | 3.8 | |
| | Child under 5 years pneumonia incidence | | | | | | 90.1 | 94.9 | 97.4 | 83.6 | 80.3 | 66.8 | |
| | Child under 5 years severe acute malnutrition case fatality rate | | | | | | | | 19.3 | 16.4 | 13.3 | 12.7 | |
| | Child under 5 years severe acute malnutrition incidence | | | | | | | | 5.5 | 4.9 | 4.3 | 4.4 | |
| 06_Immunisation | Vitamin A coverage 12 to 59 months | | 8.8 | 12.8 | 18.9 | 25.1 | 28.1 | 32.2 | 33.9 | 34.6 | 43.4 | 42.8 | |
| | Immunisation coverage under 1 year | 68.5 | 71.5 | 73.1 | 81.4 | 84.8 | 86.0 | 90.6 | 95.3 | 89.2 | 95.2 | 94.0 | |
| | Immunisation coverage under 1 year - adjusted | | | | | | | | | | 80.1 | | |
| 07_PMTCT | Measles 1st to 2nd drop-out rate | 12.4 | 13.8 | 15.7 | 20.4 | 15.1 | 19.5 | 16.3 | 8.9 | 14.5 | 15.4 | 17.0 | |
| | Antenatal client initiated on ART rate | | | | | | | | | 86.7 | 80.4 | 81.6 | |
| | Antenatal visits before 20 weeks rate | 30.5 | 29.3 | 30.3 | 31.5 | 31.3 | 31.4 | 32.9 | 34.5 | 37.6 | 40.2 | 44.0 | |
| | Early infant HIV diagnosis coverage | | | | | | | | | 56.2 | 66.9 | 73.9 | |
| | HIV prevalence among antenatal clients (survey) | 26.5 | 27.9 | 29.5 | 30.2 | 29.1 | 29.4 | 29.3 | 29.4 | 30.2 | 29.5 | | |
| | Infant 1st PCR test positive around 6 weeks rate | | | | | | 10.4 | 9.0 | 10.9 | 7.6 | 4.0 | 2.5 | |
| 08_Reprod (Infant health) | Percentage PCR tests under 2 months positive | | | | | | 10.7 | 8.4 | 5.7 | 3.8 | 2.7 | 2.4 | |
| | Cervical cancer screening coverage (annualised) | 10.6 | 11.7 | 15.0 | 21.0 | 32.0 | 36.1 | 45.6 | 47.6 | 52.2 | 55.0 | 55.4 | |
| | Couple year protection rate (annualised) | 26.3 | 26.4 | 27.3 | 28.0 | 30.2 | 30.0 | 30.9 | 31.9 | 31.6 | 32.7 | 37.8 | |
| 09_TB_CF | Incidence (diagnosed cases) of TB - all types | | | | | 577.7 | 608.2 | 752.8 | 831.8 | 718.4 | 779.8 | 687.3 | |
| | Incidence (diagnosed cases) of TB - new PTB sm+ | | | | | | | | 274.7 | 232.8 | 259.4 | 235.7 | |
| | Number of TB cases reported (new PTB sm+) | | | | | | | | 135,978.0 | 116,308.0 | 130,826.0 | 119,901.0 | |
| 09_TB_TO | TB case finding index | | | | | | | | 2.3 | 2.6 | 2.6 | 2.4 | |
| | TB cure rate (new sm+) | | | | | 61.6 | 62.7 | 66.6 | 69.3 | 69.2 | 74.2 | | |
| | TB defaulter rate (new sm+) | | | | | | | | 7.0 | 6.8 | 6.1 | | |
| 10_HIV | TB successful treatment rate (all TB) | | | | 70.0 | 68.8 | 71.3 | 72.3 | 70.8 | 75.4 | | | |
| | Adult remaining on ART at end of the month - total | | | | | | | | | 938,034.0 | 1,439,445.0 | 2,161,170.0 | |
| | Child under 15 years remaining on ART at end of the month - total | | | | | | | | | 69,707.0 | 97,738.0 | 148,342.0 | |
| 11_Socio-demo. | Male condom distribution rate | 5.1 | 5.8 | 8.0 | 9.1 | 11.1 | 11.7 | 12.2 | 13.3 | 14.8 | 15.8 | 22.1 | |
| | Adults (18-65) no secondary schooling | | | | | | | | | | 21.6 | | |
| | Medical scheme coverage (ave) | | | | | | | | 16.9 | | | | |
| 12_Burden of disease | Percentage of people without piped water in dwelling or within 200m | | | | | | | | | | 16.9 | | |
| | Percentage of deaths garbage codes | | | | | | | 15.4 | 15.9 | | | | |
| | Percentage of deaths ill-defined | | | | | | | 14.3 | 14.3 | | | | |
| | Percentage of Years of Life Lost (YLL) due to HIV and TB | | | | | | | 27.6 | 27.6 | | | | |
| | Percentage of Years of Life Lost (YLL) due to injuries | | | | | | | 10.6 | 10.5 | | | | |
| | Percentage of Years of Life Lost (YLL) due to non-communicable diseases | | | | | | | 29.8 | 32.0 | | | | |
| Extra | Percentage of YLLs due to communicable, maternal, perinatal, nutrition causes | | | | | | | 32.0 | 29.9 | | | | |
| | Antenatal client HIV prevalence in facility | | | | | | | | | 29.1 | 27.9 | 27.3 | |
| | Area (km2) | | | | | | | | | 1,220,813.3 | | | |
| | Baby initiated on HAART under 18 months rate | | | | | | | | | 52.7 | 54.4 | | |
| | Baby PCR test around 6 weeks uptake rate | | | | | | 43.4 | 70.4 | 85.7 | 86.0 | 92.8 | 98.7 | |
| | Facility crude death rate | | | | | | | | 5.6 | 5.5 | 5.1 | 5.8 | |
| | PCV 3rd dose coverage (annualised) | | | | | | | 0.2 | 23.3 | 72.8 | 94.1 | 98.4 | |
| | Population density | 37.3 | 37.8 | 38.2 | 38.6 | 39.2 | 39.7 | 40.1 | 40.5 | 40.9 | 41.3 | 41.7 | |
| | Population total (Census) | | | | | | | | | | 51,770,560.0 | | |
| | Population total (DHIS) | | | | | | | | | | 50,426,600.0 | 50,867,473.0 | |
| | Population under 1 year (Census) | | | | | | | | | | 1,159,123.0 | | |
| | Population under 1 year (DHIS) | | | | | | | | | | 975,720.0 | | |
| RV 2nd dose coverage (annualised) | | | | | | | 0.5 | 34.7 | 72.3 | 98.2 | 100.3 | | |
| Usable beds per 1 000 population | | | | | | | | | 1.8 | 1.8 | 1.7 | 1.7 | |