

## Gauteng Province

Gauteng province is the most densely populated province in the country and comparatively the smallest in area. The province's population of approximately ten million people makes up over 20% of the total population of South Africa. The province is socio-economically strong and almost all households (97.9%) had access to piped water in 2007.

The non-hospital per capita expenditure (PCE) on PHC in the province increased from R345<sup>66</sup> in 2007/08 to R365 per capita in 2008/09, which is just below the national average of R367. The total expenditure on PHC per capita of R577 in 2008/09 was the lowest among the provinces and below both the national and metro averages of R794 and R728 respectively. This is not entirely unexpected as the large proportion of higher level hospital services in Gauteng in general results in reduced expenditure at district hospital level. In 2008/09 the non-hospital cost per patient visit to a PHC facility was R150 and varied from a high of R223 in Metsweding (highest in the country) to a low of R103 in City of Tshwane.

The province has 11 district hospitals with some 2063 usable beds. The percentage of the total district budget that was spent on district hospitals was 22.4% in 2008/09, which is also the lowest in the country and around half the national average of 42.7%. The cost per PDE for district hospitals of R1304 is, after North West province, the second highest in the country. When viewing the district hospital related indicators it should be noted that Metsweding district has no district hospital.

The province's bed utilisation rate in district hospitals decreased from 64.5% in 2007/08 to 60.2% in 2008/09, which is below the national average of 66.9% and the lowest amongst all the provinces. The average length of stay in district hospitals was 3.5 days.

The PHC utilisation rate in Gauteng improved from 1.7 in 2007/08 to 2.0 visits per person per year in 2008/09. Despite this improvement the province still has the lowest PHC utilisation rates in the country. Ekurhuleni, with a utilisation rate of 1.7 and Metsweding with a utilisation rate of 1.6, were ranked 51 and 52 out of 52 districts respectively in 2008/09.

The clinical workload of nurses increased from 25.6 patients per nurse per day in 2007/08 to 27.4 in 2008/09, above the national average of 23.3 patients per nurse per day. Ekurhuleni had the highest nurse clinical workload in the province of close on 33 patients per nurse per day despite the low utilisation rate in that district.

There was a significant improvement in clinic supervision rate from 58.2% in 2007/08 to 73.9% in 2008/09, the highest in the country. The clinic supervision rate of 96.1% in Ekurhuleni was the highest in the country.

Gauteng had the second lowest rate of new smear positive TB cases diagnosed in 2008 in the country (196.8 per 100 000 population). The TB cure rate improved steadily from 61.3% in 2003 to 75.6% in 2007, the second best among the provinces after Western Cape. In City of Tshwane the TB cure rate increased from 65% in 2006 to 72.6% in 2007, with a corresponding increase in smear conversion rate from 71.4% in 2007 to 82% in 2008, the fourth highest in the country. All the districts in Gauteng achieved cure rates well over the South African average.

In 2008/09 the HIV testing rate of pregnant mothers was 78.4%, the lowest of all the provinces and below the national average of 86.7%. District variations ranged from 72.2% in Metsweding to 92.3% in Sedibeng. City of Johannesburg is the only district in the province that shows a decrease in testing rate (from 88.4% in 2007/08 to 81.2% in 2008/09), although this may be due to unrealistically high values in some months during 2007/08.

In 2008/09 the HIV prevalence in Gauteng, as reported by the national ANC survey<sup>41</sup>, was 29.9% with Sedibeng having the highest prevalence of the province's districts at 31.8%. The proportion of infants born to known HIV positive women who were PCR tested for HIV at six weeks after birth (Baby PCR test around six weeks uptake) ranged from 15.3% in City of Tshwane to 64.9% in Metsweding district. There seems to be uncertainty with the reporting of the number of HIV positive antenatal clients (not on HAART) who were CD4 tested for the first time during current pregnancy (Antenatal client CD4 1st test rate) in the DHIS - no figures are available for any of the districts.

The condom distribution rate in the province has fluctuated in the past six years with recent developments showing an increase from 7.1 condoms per male 15 years and older per year in 2007/08 to 8.2 in 2008/09.

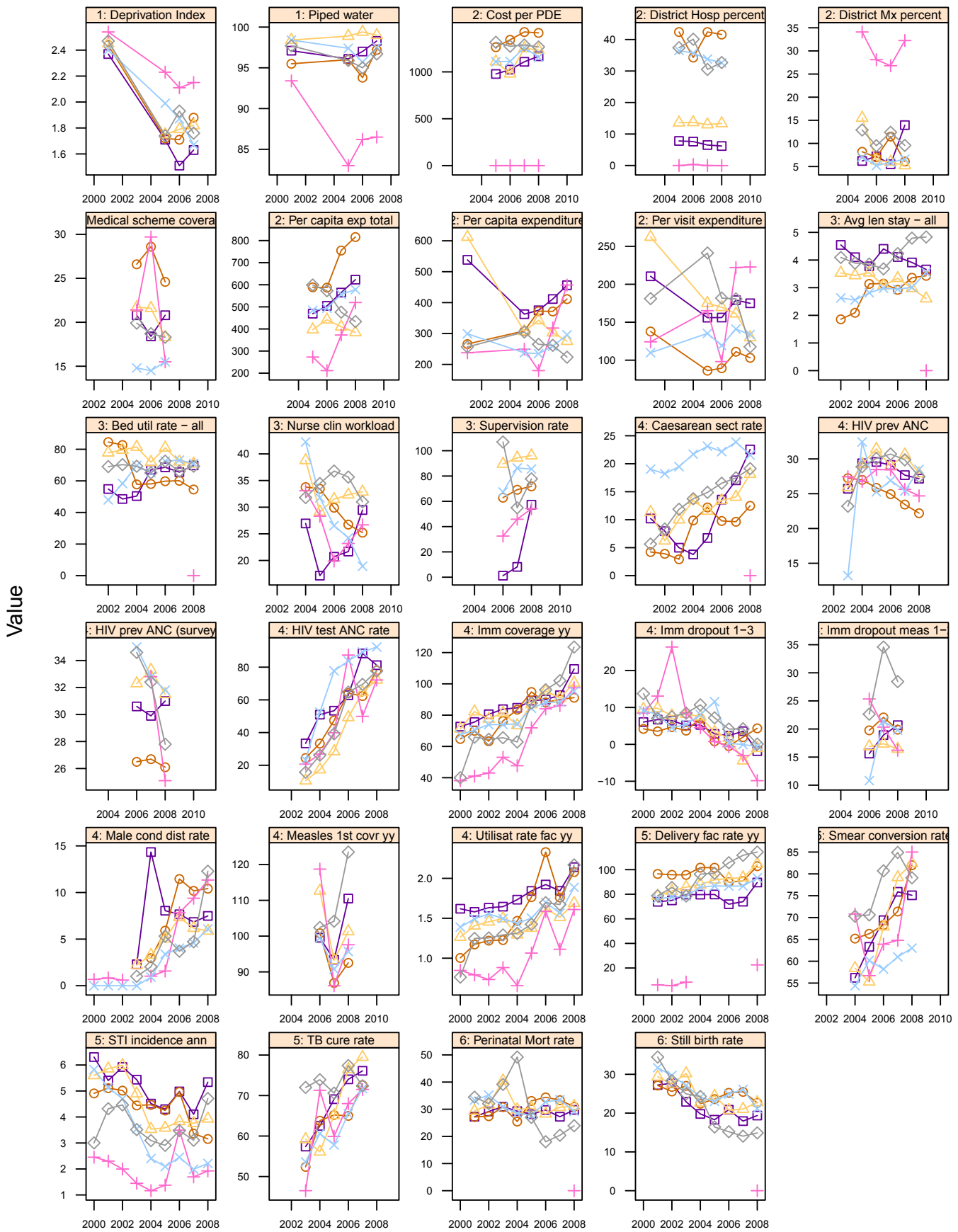
<sup>66</sup> Figures are in REAL prices that have been adjusted for the effects of inflation to 2008/09 prices.

This remains far below the national average of 12.3 per man per year and is also inadequate for an HIV preventive activity. West Rand district improved their condom distribution rate from a low of 4.7 condoms per man per year in 2007/08 to 12.3 in 2008/09 and is now the only district in the province that is not below the national average. The incidence of new STIs increased from 3.5% in 2007/08 to 4.0% in 2008/09.

Gauteng province's delivery rate in facility increased by 13 percentage points from 2007/08 to 97.3% in 2008/09, the largest increase in the country. West Rand, Ekurhuleni and City of Tshwane all have rates above 100%. The Caesarean section rate in district hospitals has also increased from 14.1% to 15.5% during the same period. The province's stillbirth rate and perinatal mortality rate increased slightly to 21 and 30 per 1000 births respectively and both are below the respective national averages for 2008/09.

The full immunisation coverage increased from 91.6% in 2007/08 to 101.5% in 2008/09, with City of Johannesburg, West Rand and Ekurhuleni all reflecting coverage rates above 100%. Likewise the Measles 1st dose coverage is over 100% for the province, as also in the abovementioned districts. This could indicate that there is a high influx of people into these districts for immunisation services, or it could indicate that the underlying population data needs to be investigated. The DTP1-3 immunisation drop-out rate decreased from 0.7% in 2007/08 to 0.2% in 2008/09, the lowest in the country, whilst the measles drop-out rate stood at 19.8% in 2008/09.

### Annual indicators for districts in Gauteng (GP)



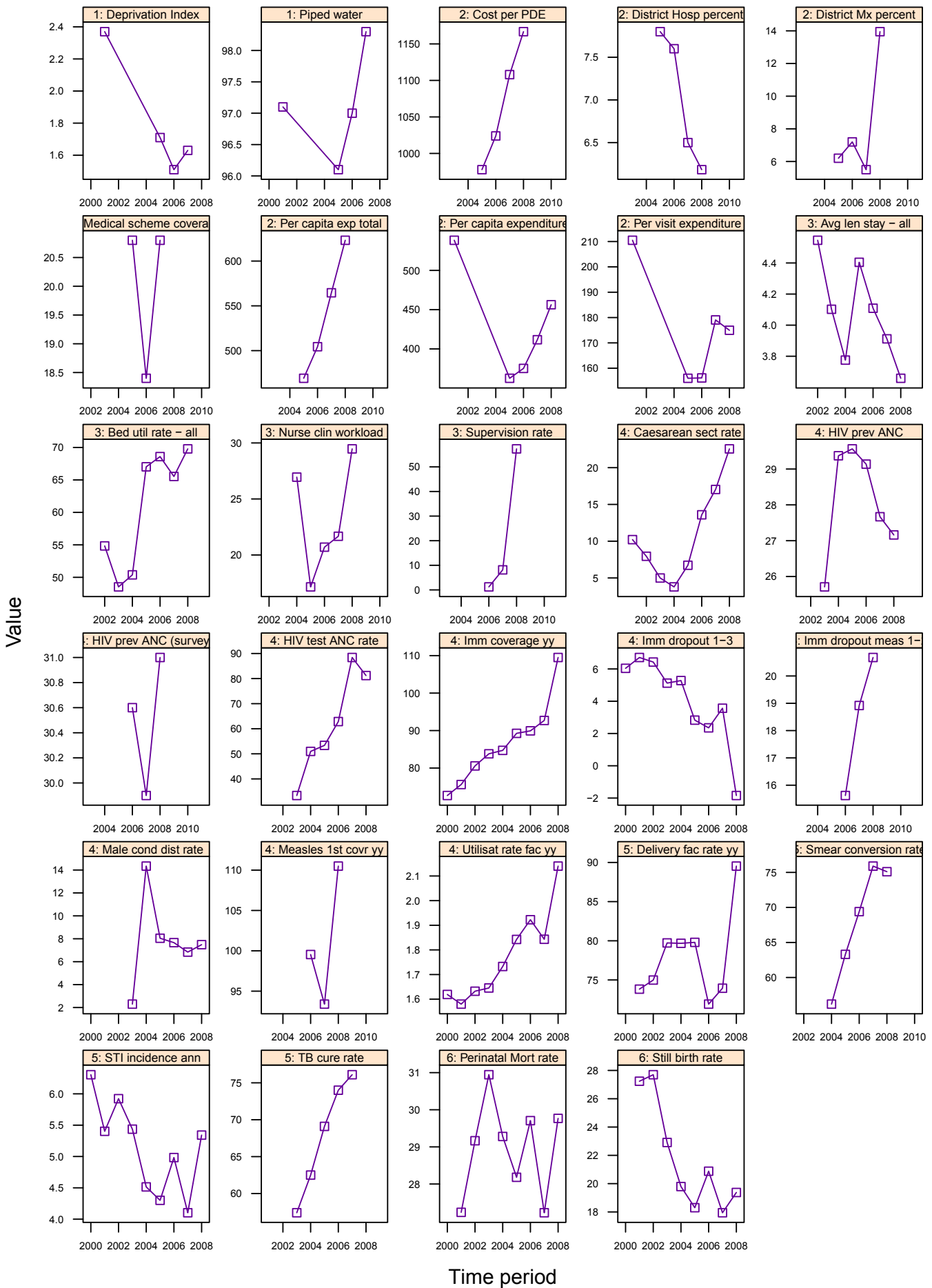
| Districts                 |   |                  |   |
|---------------------------|---|------------------|---|
| City of Johannesburg: JHB | □ | Ekurhuleni: Eku  | △ |
| City of Tshwane: TSH      | ○ | Metsweding: DC46 | + |
|                           |   | Sedibeng: DC42   | × |
|                           |   | West Rand: DC48  | ◇ |

## Annual indicators for Gauteng Province

| GP                                     | Gauteng  | Year                           |         |         |         |           |                  |                  |                  | District Rank (1=best) | National value |     |
|--|--|--------------------------------|---------|---------|---------|-----------|------------------|------------------|------------------|------------------------|----------------|-----|
|  |  | 2001/02                        | 2002/03 | 2003/04 | 2004/05 | 2005/06   | 2006/07          | 2007/08          | 2008/09          |                        |                |     |
| Demographic and socio-economic         | Population total   |                                |         |         |         | 9 597 647 | 9 796 324        | 9 949 370        | 10 104 232       |                        | 48 272 353     |     |
|  | Population Density   |                                |         |         |         | -         | -                | -                | 611              |                        | 40             |     |
|  | Medical aid coverage (%)   |                                |         |         |         | 21.7      | 21.2             | 20.2             | -                | -                      | 14.3           |     |
|  | Access to piped water (%) - (2005-06 GHS, 2007 Comm. Survey)             |                                |         |         |         | 96.9      | 96.7             | 97.9             | -                | -                      | 88.7           |     |
|  | Deprivation index - (high value = most deprived)                         | -                              | -       | -       | -       | -         | -                | -                | -                | -                      | -              | -   |
|  | Socio-economic quintile - (1=poor, 5=best)                               | -                              | -       | -       | -       | -         | -                | -                | -                | -                      | -              | -   |
| Input                                  | Total PHC expenditure per capita - (real 2008/09 prices)                 | -                              | -       | -       | -       | 482       | 503              | 550              | 577              | -                      | 794            |     |
|  | Non-hospital PHC expenditure per capita - (real 2008/09 prices)          | 449                            | -       | -       | -       | 317       | 339              | 345              | 365              | -                      | 367            |     |
|  | % District health services expenditure on District Management            | -                              | -       | -       | -       | 9.5       | 7.2              | 8.3              | 9.6              | -                      | 5.6            |     |
|  | % District health services expenditure on District Hospitals             | -                              | -       | -       | -       | 24.5      | 21.8             | 23.0             | 22.4             | -                      | 41.8           |     |
|  | PHC (Non-Hospital) Expenditure per Patient Visit - (real 2008/09 prices) | 197                            | -       | -       | -       | 140       | 134              | 153              | 150              | -                      | 128            |     |
|  | Cost per PDE - (real 2008/09 prices)                                     | -                              | -       | -       | -       | 1 150     | 1 214            | 1 327            | 1 304            | -                      | 1096           |     |
| Process                                | Nurse clinical workload  | -                              | -       | -       | 32.0    | 23.9      | 25.9             | 25.6             | 27.4             | -                      | 23.3           |     |
|  | Average length of stay (ALOS)  | -                              | -       | 2.8     | 3.2     | 3.3       | 3.2              | 3.4              | 3.5              | -                      | 4.3            |     |
|  | Bed utilisation rate (BUR)   | -                              | -       | 64.8    | 62.2    | 62.4      | 66.0             | 64.5             | 60.2             | -                      | 66.9           |     |
|  | Clinic supervision rate  | -                              | -       | -       | -       | -         | 52.0             | 58.2             | 73.9             | -                      | 61.4           |     |
| Output                                 | Male condom distribution rate  | -                              | -       | 1.5     | 6.6     | 6.0       | 7.8              | 7.1              | 8.2              | -                      | 12.3           |     |
|  | Immunisation coverage < 1 year   | -                              | -       | 79.2    | 78.6    | 88.9      | 91.1             | 91.6             | 101.5            | -                      | 89.5           |     |
|  | Immunisation drop-out rate (DTP1-3)                                      | -                              | -       | 6.1     | 6.7     | 3.5       | 1.4              | 0.7              | 0.2              | -                      | 2.7            |     |
|  | Measles Coverage   |                                |         |         |         |           | 103.7            | 92.2             | 102.4            | -                      | 91.8           |     |
|  | Measles drop-out rate  |                                |         |         |         |           | 17.0             | 20.3             | 19.8             | -                      | 16.3           |     |
|  | Caesarean section rate   | -                              | -       | 10.3    | 12.8    | 14.4      | 13.6             | 14.1             | 15.5             | -                      | 16.1           |     |
|  | Proportion ANC clients tested for HIV                                    | -                              | -       | 23.2    | 35.5    | 44.8      | 61.1             | 73.3             | 78.4             | -                      | 86.7           |     |
|  | HIV prevalence among ANC clients tested (DHIS)                           | -                              | -       | 24.5    | 29.3    | 28.7      | 28.0             | 27.5             | 26.1             | -                      | 24.3           |     |
|  | HIV prevalence among ANC clients tested (survey)                         | -                              | -       | -       | -       | -         | 30.8 (29.6-32.1) | 30.5 (29.2-31.9) | 29.9 (28.4-31.2) | -                      | 29.3           |     |
|  | Baby PCR test around 6 weeks uptake                                      |                                |         |         |         |           |                  |                  | 22.9             | -                      |                |     |
|  | Antenatal client CD4 1st test rate                                       |                                |         |         |         |           |                  |                  | 0.0              | -                      |                |     |
|  | Utilisation rate   | -                              | -       | 1.5     | 1.5     | 1.6       | 1.9              | 1.7              | 2.0              | -                      | 2.4            |     |
|  | Outcome  | Incidence of STI treated - new | -       | -       | 4.7     | 3.9       | 3.7              | 4.3              | 3.5              | 4.0                    | -              | 4.6 |
| TB cure rate (2003 - 2007)             |  | -                              | -       | 61.3    | 62.6    | 66.7      | 71.1             | 75.6             |                  | -                      | 64.0           |     |
| TB smear conversion rate (2004 - 2008) |  | -                              | -       | -       | 57.8    | 62.2      | 69.2             | 75.1             | 77.0             | -                      | 62.5           |     |
| TB case load (new Sm+)                 |  | -                              | -       | -       | -       | -         | -                | 18 208           | 19 882           | -                      | 138 803        |     |
| Delivery rate in facility              |  | -                              | -       | 82.3    | 86.2    | 87.3      | 82.9             | 84.3             | 97.3             | -                      | 86.6           |     |
| Impact                                 | Stillbirth rate  | -                              | -       | 26.4    | 21.9    | 21.5      | 21.8             | 20.9             | 21.0             | -                      | 22.3           |     |
|  | Perinatal mortality rate in facility                                     | -                              | -       | 34.2    | 29.7    | 29.8      | 29.8             | 29.7             | 30.0             | -                      | 31.4           |     |

| Number of health facilities and beds                      | Clinic | CHCs | Mobile Service | District Hospital | Regional Hospital | Provincial Tertiary Hospital | Central Hospital | Specialised Hospital | Private hospitals | Beds   |
|---|--------|------|----------------|-------------------|-------------------|------------------------------|------------------|----------------------|-------------------|--------|
| Number of public sector facilities (2009) and beds (2009) | 326    | 30   | 50             | 11                | 12                | 0                            | 4                | 10                   |                   | 16 392 |
| Number of private sector facilities and beds (2008)       |        |      |                |                   |                   |                              |                  |                      | 82                | 13 454 |

### Annual indicators for district: City of Johannesburg – JHB

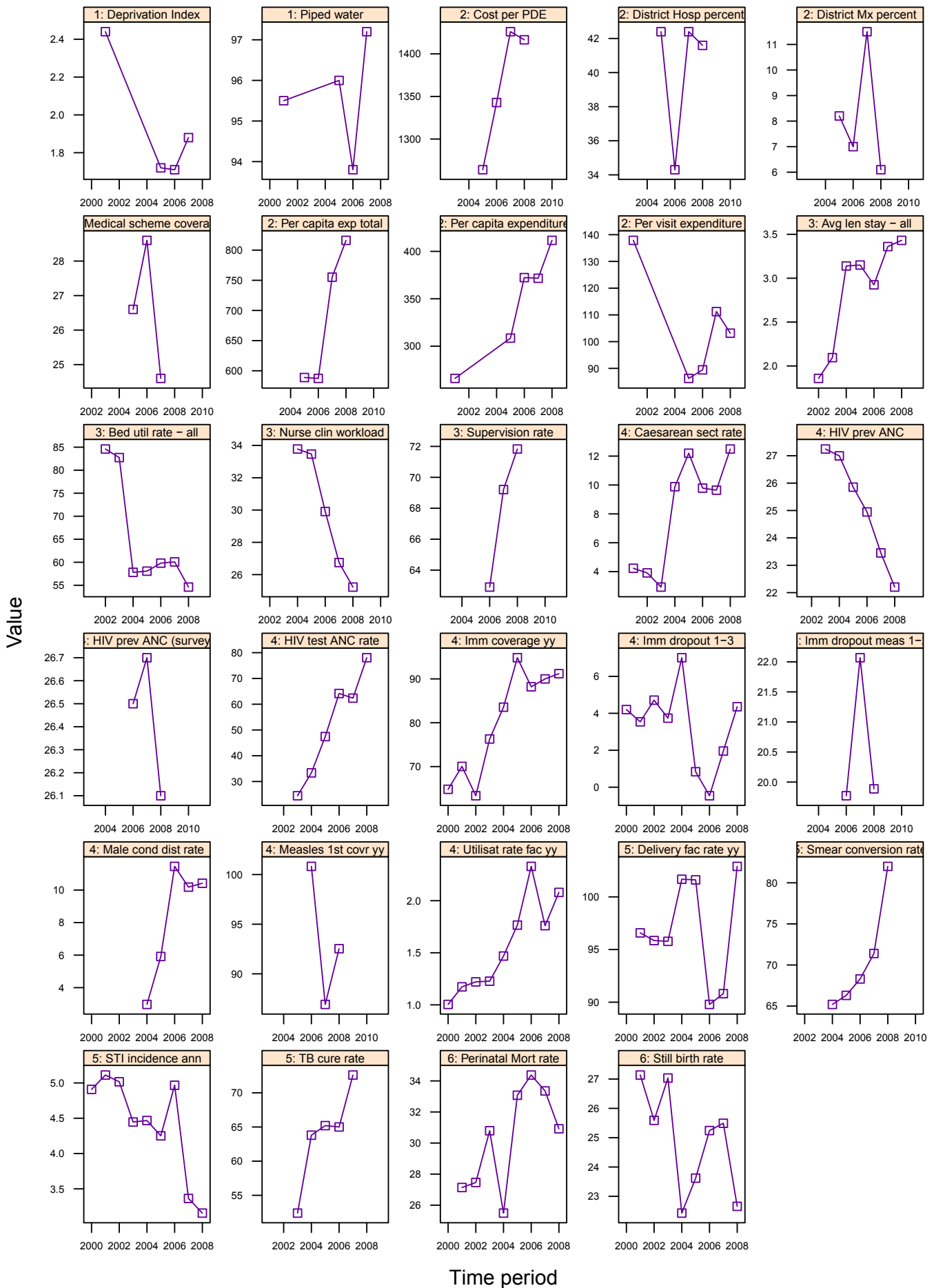


## Annual indicators for City of Johannesburg

| JHB                                    | City of Johannesburg Metropolitan Municipality                           | Year             |         |         |         |           |                  |                  |                | District Rank (1=best) | National value |
|--|--|------------------|---------|---------|---------|-----------|------------------|------------------|----------------|------------------------|----------------|
|  |  | 2001/02          | 2002/03 | 2003/04 | 2004/05 | 2005/06   | 2006/07          | 2007/08          | 2008/09        |                        |                |
| Demographic and socio-economic         | Population total   |                  |         |         |         | 3 176 946 | 3 240 413        | 3 288 132        | 3 336 457      |                        | 48 272 353     |
|  | Population Density   |                  |         |         |         | -         | -                | -                | 2 028          |                        | 40             |
|  | Medical aid coverage (%)   |                  |         |         |         | 20.8      | 18.4             | 20.8             | -              | 8                      | 14.3           |
|  | Access to piped water (%) - (2005-06 GHS, 2007 Comm. Survey)             |                  |         |         |         | 96.1      | 97.0             | 98.3             | -              | 7                      | 88.7           |
|  | Deprivation index - (high value = most deprived)                         | 2.37             | -       | -       | -       | 1.71      | 1.51             | 1.63             | -              | 11                     | -              |
|  | Socio-economic quintile - (1=poor, 5=best)                               | -                | -       | -       | -       | 5         | 5                | 5                | -              | -                      | -              |
| Input                                  | Total PHC expenditure per capita - (real 2008/09 prices)                 | -                | -       | -       | -       | 469       | 504              | 565              | 623            | 43                     | 794            |
|  | Non-hospital PHC expenditure per capita - (real 2008/09 prices)          | 538              | -       | -       | -       | 363       | 375              | 412              | 456            | 30                     | 367            |
|  | % District health services expenditure on District Management            | -                | -       | -       | -       | 6.2       | 7.2              | 5.5              | 13.9           |                        | 5.6            |
|  | % District health services expenditure on District Hospitals             | -                | -       | -       | -       | 7.8       | 7.6              | 6.5              | 6.2            |                        | 41.8           |
|  | PHC (Non-Hospital) Expenditure per Patient Visit - (real 2008/09 prices) | 211              | -       | -       | -       | 156       | 156              | 179              | 175            | 2                      | 128            |
|  | Cost per PDE - (real 2008/09 prices)                                     | -                | -       | -       | -       | 978       | 1 024            | 1 108            | 1 167          |                        | 1096           |
| Process                                | Nurse clinical workload  | -                | -       | -       | 26.9    | 17.2      | 20.7             | 21.7             | 29.5           | 14                     | 23.3           |
|  | Average length of stay (ALOS)  | -                | -       | 4.1     | 3.8     | 4.4       | 4.1              | 3.9              | 3.7            | 24                     | 4.3            |
|  | Bed utilisation rate (BUR)   | -                | -       | 48.5    | 50.4    | 67.0      | 68.6             | 65.5             | 69.8           | 24                     | 66.9           |
|  | Clinic supervision rate  | -                | -       | -       | -       | -         | 1.2              | 8.1              | 57.3           | 31                     | 61.4           |
| Output                                 | Male condom distribution rate  | -                | -       | 2.3     | 14.3    | 8.0       | 7.7              | 6.8              | 7.5            | 38                     | 12.3           |
|  | Immunisation coverage < 1 year   | -                | -       | 83.8    | 84.7    | 89.3      | 89.9             | 92.7             | 109.5          | 6                      | 89.5           |
|  | Immunisation drop-out rate (DTP1-3)                                      | -                | -       | 5.1     | 5.3     | 2.8       | 2.4              | 3.6              | -1.8           | 5                      | 2.7            |
|  | Measles Coverage   |                  |         |         |         |           | 99.5             | 93.4             | 110.5          | 48                     | 91.8           |
|  | Measles drop-out rate  |                  |         |         |         |           | 15.6             | 18.9             | 20.7           | 48                     | 16.3           |
|  | Caesarean section rate   | -                | -       | 5.0     | 3.8     | 6.7       | 13.6             | 17.0             | 22.6           |                        | 16.1           |
|  | Proportion ANC clients tested for HIV                                    | -                | -       | 33.4    | 51.0    | 53.4      | 62.9             | 88.4             | 81.2           | 43                     | 86.7           |
|  | HIV prevalence among ANC clients tested (DHIS)                           | -                | -       | 25.7    | 29.4    | 29.6      | 29.1             | 27.7             | 27.2           | 36                     | 24.3           |
|  | HIV prevalence among ANC clients tested (survey)                         | -                | -       | -       | -       | -         | 30.6 (28.8-32.5) | 29.9 (27.7-32.1) | 31 (28.7-33.4) | 31                     | 29.3           |
|  | Baby PCR test around 6 weeks uptake                                      |                  |         |         |         |           |                  |                  | 27.7           |                        |                |
|  | Antenatal client CD4 1st test rate                                       |                  |         |         |         |           |                  |                  | 0.0            |                        |                |
|  | Outcome  | Utilisation rate | -       | -       | 1.6     | 1.7       | 1.8              | 1.9              | 1.8            | 2.1                    | 37             |
| Incidence of STI treated - new         |  | -                | -       | 5.4     | 4.5     | 4.3       | 5.0              | 4.1              | 5.3            | 36                     | 4.6            |
| TB cure rate (2003 - 2007)             |  | -                | -       | 57.4    | 62.5    | 69.1      | 74.0             | 76.1             |                | 10                     | 64.0           |
| TB smear conversion rate (2004 - 2008) |  | -                | -       | -       | 56.2    | 63.3      | 69.4             | 75.9             | 75.1           | 10                     | 62.5           |
| TB case load (new Sm+)                 |  | -                | -       | -       | -       | -         | -                | 7 490            | 8 584          |                        | 138 803        |
| Delivery rate in facility              |  | -                | -       | 79.7    | 79.7    | 79.8      | 71.9             | 73.9             | 89.5           | 20                     | 86.6           |
| Impact                                 | Stillbirth rate  | -                | -       | 22.9    | 19.8    | 18.3      | 20.9             | 17.9             | 19.4           | 15                     | 22.3           |
|  | Perinatal mortality rate in facility                                     | -                | -       | 30.9    | 29.3    | 28.2      | 29.7             | 27.2             | 29.8           | 22                     | 31.4           |

| Number of health facilities and beds                      | Clinic | CHCs | Mobile Service | District Hospital | Regional Hospital | Provincial Tertiary Hospital | Central Hospital | Specialised Hospital | Private hospitals | Beds  |
|---|--------|------|----------------|-------------------|-------------------|------------------------------|------------------|----------------------|-------------------|-------|
| Number of public sector facilities (2009) and beds (2009) | 111    | 9    | 14             | 2                 | 3                 | 0                            | 2                | 4                    |                   | 5 388 |
| Number of private sector facilities and beds (2008)       |        |      |                |                   |                   |                              |                  |                      | 29                | 5 540 |

### Annual indicators for district: City of Tshwane – TSH



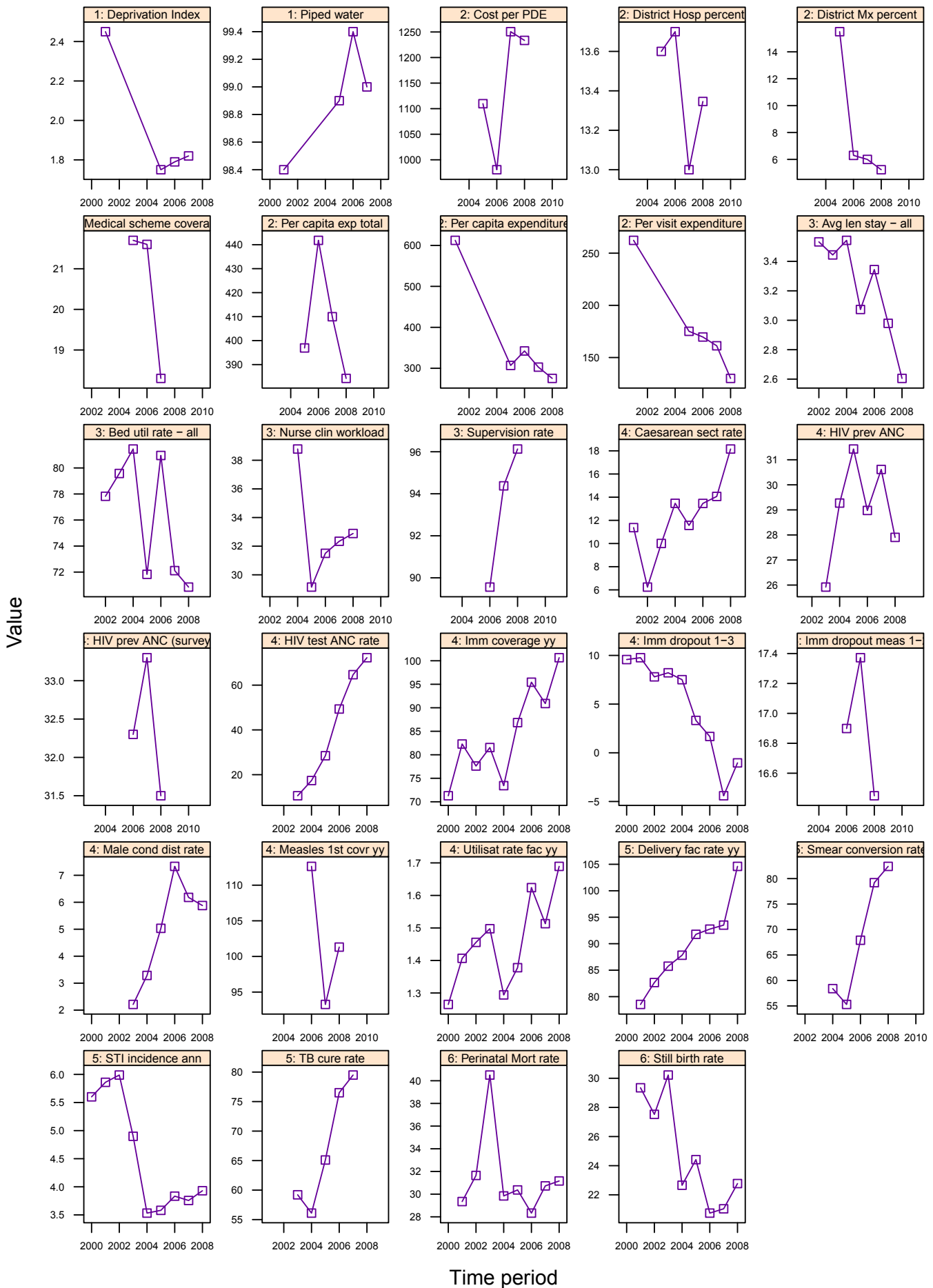
## Annual indicators for City of Tshwane

| TSH                            | Tshwane Metropolitan Municipality  | Year    |         |         |         |           |              |                  |                  | District Rank<br>(1=best) | National value |
|--------------------------------|--|---------|---------|---------|---------|-----------|--------------|------------------|------------------|---------------------------|----------------|
|                                |  | 2001/02 | 2002/03 | 2003/04 | 2004/05 | 2005/06   | 2006/07      | 2007/08          | 2008/09          |                           |                |
| Demographic and socio-economic | Population total   |         |         |         |         | 2 052 935 | 2 101 120    | 2 140 964        | 2 181 690        |                           | 48 272 353     |
|                                | Population Density   |         |         |         |         | -         | -            | -                | 1 003            |                           | 40             |
|                                | Medical aid coverage (%)   |         |         |         |         | 26.6      | 28.6         | 24.6             | -                | 4                         | 14.3           |
|                                | Access to piped water (%) - (2005-06 GHS, 2007 Comm. Survey)             |         |         |         |         | 96.0      | 93.8         | 97.2             | -                | 13                        | 88.7           |
|                                | Deprivation index - (high value = most deprived)                         | 2.44    | -       | -       | -       | 1.72      | 1.71         | 1.88             | -                | 19                        | -              |
|                                | Socio-economic quintile - (1=poor, 5=best)                               | -       | -       | -       | -       | 5         | 4            | 4                | -                | -                         | -              |
| Input                          | Total PHC expenditure per capita - (real 2008/09 prices)                 | -       | -       | -       | -       | 589       | 587          | 755              | 816              | 30                        | 794            |
|                                | Non-hospital PHC expenditure per capita - (real 2008/09 prices)          | 266     | -       | -       | -       | 309       | 372          | 372              | 412              | 24                        | 367            |
|                                | % District health services expenditure on District Management            | -       | -       | -       | -       | 8.2       | 7.0          | 11.5             | 6.1              |                           | 5.6            |
|                                | % District health services expenditure on District Hospitals             | -       | -       | -       | -       | 42.4      | 34.3         | 42.4             | 41.6             |                           | 41.8           |
|                                | PHC (Non-Hospital) Expenditure per Patient Visit - (real 2008/09 prices) | 138     | -       | -       | -       | 86        | 89           | 111              | 103              | 45                        | 128            |
|                                | Cost per PDE - (real 2008/09 prices)                                     | -       | -       | -       | -       | 1 264     | 1 343        | 1 426            | 1 417            |                           | 1096           |
| Process                        | Nurse clinical workload  | -       | -       | -       | 33.8    | 33.5      | 29.9         | 26.7             | 25.2             | 20                        | 23.3           |
|                                | Average length of stay (ALOS)  | -       | -       | 2.1     | 3.1     | 3.1       | 2.9          | 3.4              | 3.4              | 18                        | 4.3            |
|                                | Bed utilisation rate (BUR)   | -       | -       | 82.7    | 57.8    | 58.1      | 59.8         | 60.1             | 54.6             | 47                        | 66.9           |
|                                | Clinic supervision rate  | -       | -       | -       | -       | -         | 62.9         | 69.2             | 71.8             | 19                        | 61.4           |
| Output                         | Male condom distribution rate  | -       | -       | 0.0     | 3.0     | 5.9       | 11.5         | 10.2             | 10.4             | 22                        | 12.3           |
|                                | Immunisation coverage < 1 year   | -       | -       | 76.3    | 83.5    | 94.8      | 88.2         | 90.0             | 91.2             | 21                        | 89.5           |
|                                | Immunisation drop-out rate (DTP1-3)                                      | -       | -       | 3.7     | 7.0     | 0.8       | -0.5         | 2.0              | 4.4              | 39                        | 2.7            |
|                                | Measles Coverage   |         |         |         |         |           | 100.8        | 86.9             | 92.5             | 31                        | 91.8           |
|                                | Measles drop-out rate  |         |         |         |         |           | 19.8         | 22.1             | 19.9             | 45                        | 16.3           |
|                                | Caesarean section rate   | -       | -       | 2.9     | 9.9     | 12.2      | 9.8          | 9.6              | 12.5             |                           | 16.1           |
|                                | Proportion ANC clients tested for HIV                                    | -       | -       | 24.5    | 33.4    | 47.4      | 64.2         | 62.4             | 78.1             | 45                        | 86.7           |
|                                | HIV prevalence among ANC clients tested (DHIS)                           | -       | -       | 27.2    | 27.0    | 25.9      | 24.9         | 23.5             | 22.2             | 24                        | 24.3           |
|                                | HIV prevalence among ANC clients tested (survey)                         | -       | -       | -       | -       | -         | 26.5 (24-29) | 26.7 (23.5-30.1) | 26.1 (23.2-29.2) | 20                        | 29.3           |
|                                | Baby PCR test around 6 weeks uptake                                      |         |         |         |         |           |              |                  | 15.3             |                           |                |
|                                | Antenatal client CD4 1st test rate                                       |         |         |         |         |           |              |                  | 0.0              |                           |                |
| Outcome                        | Utilisation rate   | -       | -       | 1.2     | 1.5     | 1.8       | 2.3          | 1.8              | 2.1              | 41                        | 2.4            |
|                                | Incidence of STI treated - new   | -       | -       | 4.4     | 4.5     | 4.3       | 5.0          | 3.4              | 3.2              | 16                        | 4.6            |
|                                | TB cure rate (2003 - 2007)   | -       | -       | 52.4    | 63.8    | 65.2      | 65.0         | 72.6             |                  | 14                        | 64.0           |
|                                | TB smear conversion rate (2004 - 2008)                                   | -       | -       |         | 65.2    | 66.3      | 68.3         | 71.4             | 82.0             | 4                         | 62.5           |
|                                | TB case load (new Sm+)   | -       | -       | -       | -       | -         | -            | 2 556            | 3 465            |                           | 138 803        |
|                                | Delivery rate in facility  | -       | -       | 95.8    | 101.7   | 101.6     | 89.8         | 90.8             | 102.9            | 5                         | 86.6           |
| Impact                         | Stillbirth rate  | -       | -       | 27.0    | 22.4    | 23.6      | 25.2         | 25.5             | 22.7             | 32                        | 22.3           |
|                                | Perinatal mortality rate in facility                                     | -       | -       | 30.8    | 25.5    | 33.1      | 34.4         | 33.4             | 30.9             | 27                        | 31.4           |

| Number of health facilities and beds                      | Clinic | CHCs | Mobile Service | District Hospital | Regional Hospital | Provincial Tertiary Hospital | Central Hospital | Specialised Hospital | Private hospitals | Beds  |
|---|--------|------|----------------|-------------------|-------------------|------------------------------|------------------|----------------------|-------------------|-------|
| Number of public sector facilities (2009) and beds (2009) | 59     | 6    | 6              | 5                 | 2                 | 0                            | 2                | 3                    |                   | 5 140 |
| Number of private sector facilities and beds (2008)       |        |      |                |                   |                   |                              |                  |                      | 25                | 4 109 |



### Annual indicators for district: Ekurhuleni – Eku

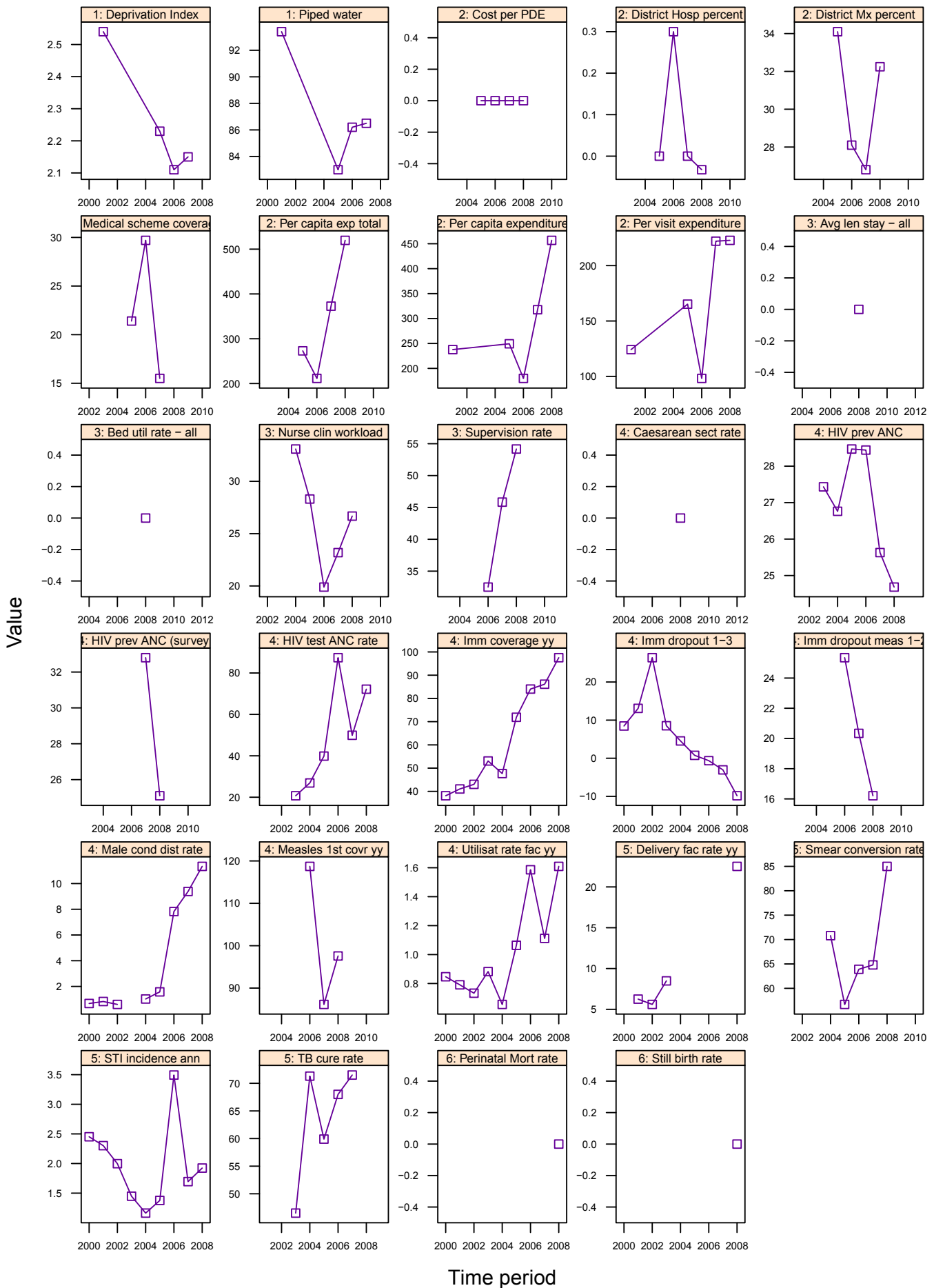


## Annual indicators for Ekurhuleni Metropolitan Municipality

| EKU                                    | Ekurhuleni Metropolitan Municipality                                     | Year                           |         |         |         |           |                  |                |                  | District Rank (1=best) | National value |
|--|--|--------------------------------|---------|---------|---------|-----------|------------------|----------------|------------------|------------------------|----------------|
|  |  | 2001/02                        | 2002/03 | 2003/04 | 2004/05 | 2005/06   | 2006/07          | 2007/08        | 2008/09          |                        |                |
| Demographic and socio-economic         | Population total   |                                |         |         |         | 2 476 129 | 2 532 767        | 2 577 446      | 2 622 298        |                        | 48 272 353     |
|  | Population Density   |                                |         |         |         | -         | -                | -              | 1 363            |                        | 40             |
|  | Medical aid coverage (%)   |                                |         |         |         | 21.7      | 21.6             | 18.3           | -                | 10                     | 14.3           |
|  | Access to piped water (%) - (2005-06 GHS, 2007 Comm. Survey)             |                                |         |         |         | 98.9      | 99.4             | 99.0           | -                | 2                      | 88.7           |
|  | Deprivation index - (high value = most deprived)                         | 2.45                           | -       | -       | -       | 1.75      | 1.79             | 1.82           | -                | 17                     | -              |
|  | Socio-economic quintile - (1=poor, 5=best)                               | -                              | -       | -       | -       | 5         | 4                | 4              | -                | -                      | -              |
| Input                                  | Total PHC expenditure per capita - (real 2008/09 prices)                 | -                              | -       | -       | -       | 397       | 442              | 410            | 384              | 52                     | 794            |
|  | Non-hospital PHC expenditure per capita - (real 2008/09 prices)          | 612                            | -       | -       | -       | 307       | 342              | 303            | 275              | 51                     | 367            |
|  | % District health services expenditure on District Management            | -                              | -       | -       | -       | 15.5      | 6.3              | 6.0            | 5.2              |                        | 5.6            |
|  | % District health services expenditure on District Hospitals             | -                              | -       | -       | -       | 13.6      | 13.7             | 13.0           | 13.3             |                        | 41.8           |
|  | PHC (Non-Hospital) Expenditure per Patient Visit - (real 2008/09 prices) | 262                            | -       | -       | -       | 175       | 170              | 161            | 130              | 24                     | 128            |
|  | Cost per PDE - (real 2008/09 prices)                                     | -                              | -       | -       | -       | 1 110     | 981              | 1 251          | 1 234            |                        | 1096           |
| Process                                | Nurse clinical workload  | -                              | -       | -       | 38.8    | 29.1      | 31.5             | 32.3           | 32.9             | 6                      | 23.3           |
|  | Average length of stay (ALOS)  | -                              | -       | 3.4     | 3.5     | 3.1       | 3.3              | 3.0            | 2.6              | 9                      | 4.3            |
|  | Bed utilisation rate (BUR)   | -                              | -       | 79.6    | 81.5    | 71.8      | 81.0             | 72.1           | 70.8             | 20                     | 66.9           |
|  | Clinic supervision rate  | -                              | -       | -       | -       | -         | 89.6             | 94.4           | 96.1             | 1                      | 61.4           |
| Output                                 | Male condom distribution rate  | -                              | -       | 2.2     | 3.3     | 5.0       | 7.3              | 6.2            | 5.9              | 48                     | 12.3           |
|  | Immunisation coverage < 1 year   | -                              | -       | 81.5    | 73.4    | 86.8      | 95.4             | 90.9           | 100.7            | 10                     | 89.5           |
|  | Immunisation drop-out rate (DTP1-3)                                      | -                              | -       | 8.2     | 7.5     | 3.3       | 1.7              | -4.4           | -1.0             | 8                      | 2.7            |
|  | Measles Coverage   |                                |         |         |         |           | 112.6            | 93.3           | 101.3            | 41                     | 91.8           |
|  | Measles drop-out rate  |                                |         |         |         |           | 16.9             | 17.4           | 16.4             | 34                     | 16.3           |
|  | Caesarean section rate   | -                              | -       | 10.0    | 13.5    | 11.6      | 13.5             | 14.1           | 18.2             |                        | 16.1           |
|  | Proportion ANC clients tested for HIV                                    | -                              | -       | 10.6    | 17.4    | 28.5      | 49.3             | 64.7           | 72.3             | 48                     | 86.7           |
|  | HIV prevalence among ANC clients tested (DHIS)                           | -                              | -       | 25.9    | 29.3    | 31.4      | 29.0             | 30.6           | 27.9             | 40                     | 24.3           |
|  | HIV prevalence among ANC clients tested (survey)                         | -                              | -       | -       | -       | -         | 32.3 (30.1-34.5) | 33.3 (31-35.8) | 31.5 (28.7-34.7) | 32                     | 29.3           |
|  | Baby PCR test around 6 weeks uptake                                      |                                |         |         |         |           |                  |                | 28.7             |                        |                |
|  | Antenatal client CD4 1st test rate                                       |                                |         |         |         |           |                  |                | 0.0              |                        |                |
|  | Utilisation rate   | -                              | -       | 1.5     | 1.3     | 1.4       | 1.6              | 1.5            | 1.7              | 51                     | 2.4            |
|  | Outcome  | Incidence of STI treated - new | -       | -       | 4.9     | 3.5       | 3.6              | 3.8            | 3.8              | 3.9                    | 23             |
| TB cure rate (2003 - 2007)             |  | -                              | -       | 59.2    | 56.1    | 65.1      | 76.5             | 79.5           |                  | 4                      | 64.0           |
| TB smear conversion rate (2004 - 2008) |  | -                              | -       |         | 58.4    | 55.3      | 67.9             | 79.2           | 82.4             | 3                      | 62.5           |
| TB case load (new Sm+)                 |  | -                              | -       | -       | -       | -         | -                | 4 295          | 3 977            |                        | 138 803        |
| Delivery rate in facility              |  | -                              | -       | 85.8    | 87.8    | 91.8      | 92.8             | 93.5           | 104.6            | 4                      | 86.6           |
| Impact                                 | Stillbirth rate  | -                              | -       | 30.2    | 22.7    | 24.4      | 20.7             | 21.0           | 22.8             | 33                     | 22.3           |
|  | Perinatal mortality rate in facility                                     | -                              | -       | 40.5    | 29.8    | 30.4      | 28.3             | 30.7           | 31.2             | 28                     | 31.4           |

| Number of health facilities and beds                      | Clinic | CHCs | Mobile Service | District Hospital | Regional Hospital | Provincial Tertiary Hospital | Central Hospital | Specialised Hospital | Private hospitals | Beds  |
|---|--------|------|----------------|-------------------|-------------------|------------------------------|------------------|----------------------|-------------------|-------|
| Number of public sector facilities (2009) and beds (2009) | 83     | 8    | 7              | 1                 | 5                 | 0                            | 0                | 1                    |                   | 2 902 |
| Number of private sector facilities and beds (2008)       |        |      |                |                   |                   |                              |                  |                      | 16                | 2 410 |

### Annual indicators for district: Metsweding – DC46

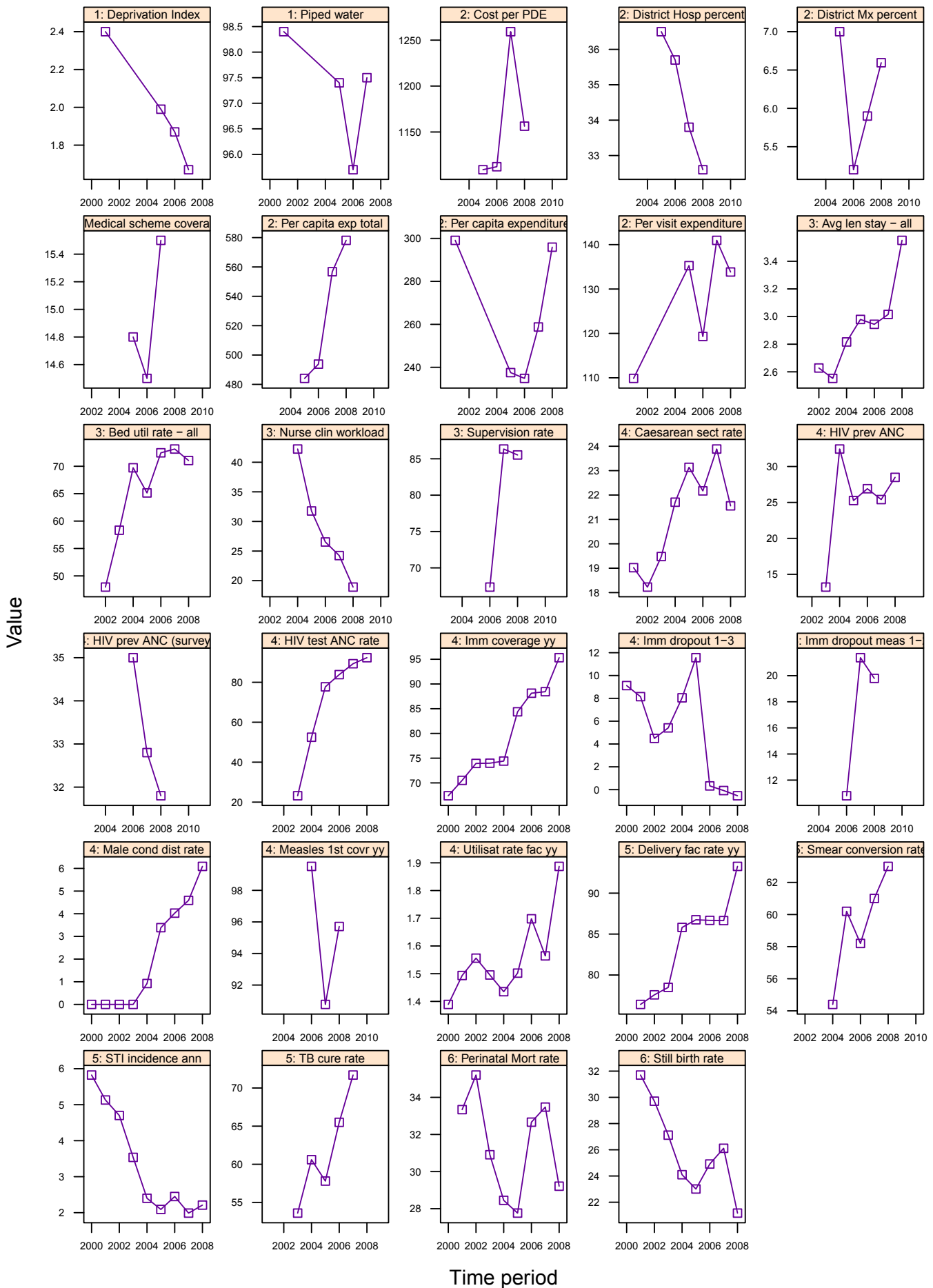


## Annual indicators for Metsweding District Municipality

| DC46                           | Metsweding District Municipality   | Year    |         |         |         |         |         |                  |                  | District Rank (1=best) | National value |
|--------------------------------|--|---------|---------|---------|---------|---------|---------|------------------|------------------|------------------------|----------------|
|                                |  | 2001/02 | 2002/03 | 2003/04 | 2004/05 | 2005/06 | 2006/07 | 2007/08          | 2008/09          |                        |                |
| Demographic and socio-economic | Population total   |         |         |         |         | 202 419 | 208 264 | 212 819          | 217 433          |                        | 48 272 353     |
|                                | Population Density   |         |         |         |         | -       | -       | -                | 52               |                        | 40             |
|                                | Medical aid coverage (%)   |         |         |         |         | 21.4    | 29.7    | 15.5             | -                | 16                     | 14.3           |
|                                | Access to piped water (%) - (2005-06 GHS, 2007 Comm. Survey)             |         |         |         |         | 83.0    | 86.2    | 86.5             | -                | 36                     | 88.7           |
|                                | Deprivation index - (high value = most deprived)                         | 2.54    | -       | -       | -       | 2.23    | 2.11    | 2.15             | -                | 23                     | -              |
|                                | Socio-economic quintile - (1=poor, 5=best)                               | -       | -       | -       | -       | 4       | 4       | 3                | -                | -                      | -              |
| Input                          | Total PHC expenditure per capita - (real 2008/09 prices)                 | -       | -       | -       | -       | 273     | 211     | 373              | 520              | 49                     | 794            |
|                                | Non-hospital PHC expenditure per capita - (real 2008/09 prices)          | 238     | -       | -       | -       | 249     | 180     | 318              | 457              | 3                      | 367            |
|                                | % District health services expenditure on District Management            | -       | -       | -       | -       | 34.1    | 28.1    | 26.8             | 32.2             |                        | 5.6            |
|                                | % District health services expenditure on District Hospitals             | -       | -       | -       | -       | 0.0     | 0.3     | 0.0              | 0.0              |                        | 41.8           |
|                                | PHC (Non-Hospital) Expenditure per Patient Visit - (real 2008/09 prices) | 124     | -       | -       | -       | 165     | 98      | 222              | 223              | 1                      | 128            |
|                                | Cost per PDE - (real 2008/09 prices)                                     | -       | -       | -       | -       | -       | -       | -                | -                |                        | 1096           |
| Process                        | Nurse clinical workload  | -       | -       | -       | 33.1    | 28.3    | 19.9    | 23.2             | 26.7             | 19                     | 23.3           |
|                                | Average length of stay (ALOS)  | -       | -       | -       | -       | -       | -       | -                | -                | -                      | 4.3            |
|                                | Bed utilisation rate (BUR)   | -       | -       | -       | -       | -       | -       | -                | -                | -                      | 66.9           |
|                                | Clinic supervision rate  | -       | -       | -       | -       | -       | 32.5    | 45.8             | 54.2             | 35                     | 61.4           |
| Output                         | Male condom distribution rate  | -       | -       | 0.0     | 1.0     | 1.6     | 7.8     | 9.4              | 11.3             | 20                     | 12.3           |
|                                | Immunisation coverage < 1 year   | -       | -       | 53.1    | 47.7    | 71.9    | 84.0    | 86.1             | 97.5             | 15                     | 89.5           |
|                                | Immunisation drop-out rate (DTP1-3)                                      | -       | -       | 8.5     | 4.5     | 0.8     | -0.6    | -3.1             | -9.8             | 1                      | 2.7            |
|                                | Measles Coverage   |         |         |         |         |         | 118.7   | 86.1             | 97.6             | 39                     | 91.8           |
|                                | Measles drop-out rate  |         |         |         |         |         | 25.3    | 20.3             | 16.2             | 32                     | 16.3           |
|                                | Caesarean section rate   | -       | -       | -       | -       | -       | -       | -                | -                |                        | 16.1           |
|                                | Proportion ANC clients tested for HIV                                    | -       | -       | 20.7    | 26.9    | 39.9    | 87.4    | 49.9             | 72.2             | 49                     | 86.7           |
|                                | HIV prevalence among ANC clients tested (DHIS)                           | -       | -       | 27.4    | 26.8    | 28.5    | 28.4    | 25.6             | 24.7             | 30                     | 24.3           |
|                                | HIV prevalence among ANC clients tested (survey)                         | -       | -       | -       | -       | -       | -       | 32.8 (20.1-48.7) | 25.1 (16.9-35.6) | 18                     | 29.3           |
|                                | Baby PCR test around 6 weeks uptake                                      |         |         |         |         |         |         |                  | 64.9             |                        |                |
|                                | Antenatal client CD4 1st test rate                                       |         |         |         |         |         |         |                  | 0.0              |                        |                |
|                                | Utilisation rate   | -       | -       | 0.9     | 0.7     | 1.1     | 1.6     | 1.1              | 1.6              | 52                     | 2.4            |
| Outcome                        | Incidence of STI treated - new   | -       | -       | 1.4     | 1.2     | 1.4     | 3.5     | 1.7              | 1.9              | 2                      | 4.6            |
|                                | TB cure rate (2003 - 2007)   | -       | -       | 46.5    | 71.3    | 59.9    | 68.0    | 71.5             |                  | 18                     | 64.0           |
|                                | TB smear conversion rate (2004 - 2008)                                   | -       | -       |         | 70.8    | 56.7    | 63.9    | 64.8             | 85.0             | 2                      | 62.5           |
|                                | TB case load (new Sm+)   | -       | -       | -       | -       | -       | -       | 215              | 630              |                        | 138 803        |
|                                | Delivery rate in facility  | -       | -       | 8.5     | 0.0     | 0.0     | 0.0     | 0.0              | 22.5             | 52                     | 86.6           |
| Impact                         | Stillbirth rate  | -       | -       | 0.0     | 0.0     | 0.0     | -       | -                | -                | -                      | 22.3           |
|                                | Perinatal mortality rate in facility                                     | -       | -       | 0.0     | 0.0     | 0.0     | -       | -                | -                | -                      | 31.4           |

| Number of health facilities and beds                      | Clinic | CHCs | Mobile Service | District Hospital | Regional Hospital | Provincial Tertiary Hospital | Central Hospital | Specialised Hospital | Private hospitals | Beds |
|---|--------|------|----------------|-------------------|-------------------|------------------------------|------------------|----------------------|-------------------|------|
| Number of public sector facilities (2009) and beds (2009) | 10     | 0    | 3              | 0                 | 0                 | 0                            | 0                | 1                    |                   | 298  |
| Number of private sector facilities and beds (2008)       |        |      |                |                   |                   |                              |                  |                      | 1                 | 43   |

### Annual indicators for district: Sedibeng – DC42

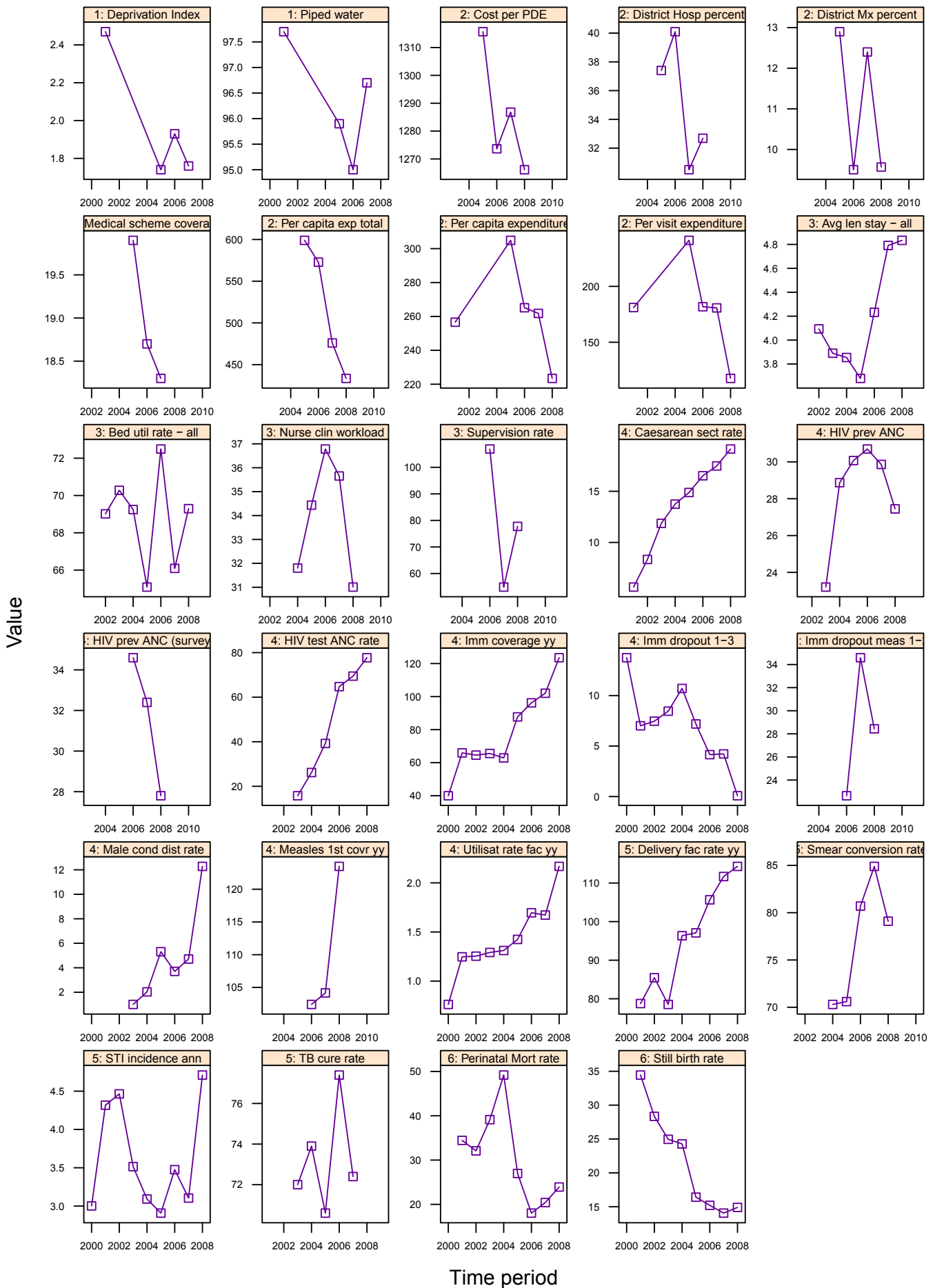


## Annual indicators for Sedibeng District Municipality

| DC42                           | Sedibeng District Municipality   | Year    |         |         |         |         |                |                  |                  | District Rank (1=best) | National value |
|--------------------------------|--|---------|---------|---------|---------|---------|----------------|------------------|------------------|------------------------|----------------|
|                                |  | 2001/02 | 2002/03 | 2003/04 | 2004/05 | 2005/06 | 2006/07        | 2007/08          | 2008/09          |                        |                |
| Demographic and socio-economic | Population total   |         |         |         |         | 911 447 | 920 229        | 924 456          | 929 105          |                        | 48 272 353     |
|                                | Population Density   |         |         |         |         | -       | -              | -                | 222              |                        | 40             |
|                                | Medical aid coverage (%)   |         |         |         |         | 14.8    | 14.5           | 15.5             | -                | 17                     | 14.3           |
|                                | Access to piped water (%) - (2005-06 GHS, 2007 Comm. Survey)             |         |         |         |         | 97.4    | 95.7           | 97.5             | -                | 11                     | 88.7           |
|                                | Deprivation index - (high value = most deprived)                         | 2.40    | -       | -       | -       | 1.99    | 1.87           | 1.67             | -                | 12                     | -              |
|                                | Socio-economic quintile - (1=poor, 5=best)                               | -       | -       | -       | -       | 4       | 4              | 4                | -                | -                      | -              |
| Input                          | Total PHC expenditure per capita - (real 2008/09 prices)                 | -       | -       | -       | -       | 484     | 494            | 557              | 578              | 47                     | 794            |
|                                | Non-hospital PHC expenditure per capita - (real 2008/09 prices)          | 299     | -       | -       | -       | 238     | 235            | 259              | 296              | 31                     | 367            |
|                                | % District health services expenditure on District Management            | -       | -       | -       | -       | 7.0     | 5.2            | 5.9              | 6.6              |                        | 5.6            |
|                                | % District health services expenditure on District Hospitals             | -       | -       | -       | -       | 36.5    | 35.7           | 33.8             | 32.6             |                        | 41.8           |
|                                | PHC (Non-Hospital) Expenditure per Patient Visit - (real 2008/09 prices) | 110     | -       | -       | -       | 135     | 119            | 141              | 134              | 19                     | 128            |
|                                | Cost per PDE - (real 2008/09 prices)                                     | -       | -       | -       | -       | 1 109   | 1 112          | 1 259            | 1 156            |                        | 1096           |
| Process                        | Nurse clinical workload  | -       | -       | -       | 42.2    | 31.8    | 26.5           | 24.2             | 18.9             | 40                     | 23.3           |
|                                | Average length of stay (ALOS)  | -       | -       | 2.6     | 2.8     | 3.0     | 2.9            | 3.0              | 3.6              | 20                     | 4.3            |
|                                | Bed utilisation rate (BUR)   | -       | -       | 58.3    | 69.7    | 65.1    | 72.5           | 73.1             | 71.0             | 19                     | 66.9           |
|                                | Clinic supervision rate  | -       | -       | -       | -       | -       | 67.4           | 86.3             | 85.5             | 4                      | 61.4           |
| Output                         | Male condom distribution rate  | -       | -       | 0.0     | 0.9     | 3.4     | 4.0            | 4.6              | 6.1              | 44                     | 12.3           |
|                                | Immunisation coverage < 1 year   | -       | -       | 74.0    | 74.4    | 84.4    | 88.1           | 88.4             | 95.3             | 17                     | 89.5           |
|                                | Immunisation drop-out rate (DTP1-3)                                      | -       | -       | 5.4     | 8.0     | 11.6    | 0.3            | -0.1             | -0.5             | 10                     | 2.7            |
|                                | Measles Coverage   |         |         |         |         |         | 99.5           | 90.8             | 95.7             | 36                     | 91.8           |
|                                | Measles drop-out rate  |         |         |         |         |         | 10.8           | 21.4             | 19.8             | 44                     | 16.3           |
|                                | Caesarean section rate   | -       | -       | 19.5    | 21.7    | 23.1    | 22.2           | 23.9             | 21.6             |                        | 16.1           |
|                                | Proportion ANC clients tested for HIV                                    | -       | -       | 23.2    | 52.5    | 77.7    | 83.8           | 89.3             | 92.3             | 30                     | 86.7           |
|                                | HIV prevalence among ANC clients tested (DHIS)                           | -       | -       | 13.2    | 32.4    | 25.3    | 26.9           | 25.4             | 28.5             | 41                     | 24.3           |
|                                | HIV prevalence among ANC clients tested (survey)                         | -       | -       | -       | -       | -       | 35 (30.2-39.7) | 32.8 (28.7-37.1) | 31.8 (28.7-35.1) | 34                     | 29.3           |
|                                | Baby PCR test around 6 weeks uptake                                      |         |         |         |         |         |                |                  | 19.7             |                        |                |
|                                | Antenatal client CD4 1st test rate                                       |         |         |         |         |         |                |                  | 0.0              |                        |                |
|                                | Utilisation rate   | -       | -       | 1.5     | 1.4     | 1.5     | 1.7            | 1.6              | 1.9              | 46                     | 2.4            |
| Outcome                        | Incidence of STI treated - new   | -       | -       | 3.5     | 2.4     | 2.1     | 2.4            | 2.0              | 2.2              | 5                      | 4.6            |
|                                | TB cure rate (2003 - 2007)   | -       | -       | 53.6    | 60.6    | 57.8    | 65.5           | 71.7             |                  | 17                     | 64.0           |
|                                | TB smear conversion rate (2004 - 2008)                                   | -       | -       | -       | 54.4    | 60.2    | 58.2           | 61.0             | 63.0             | 23                     | 62.5           |
|                                | TB case load (new Sm+)   | -       | -       | -       | -       | -       | -              | 2 194            | 2 013            |                        | 138 803        |
|                                | Delivery rate in facility  | -       | -       | 78.5    | 85.8    | 86.7    | 86.7           | 86.6             | 93.3             | 16                     | 86.6           |
| Impact                         | Stillbirth rate  | -       | -       | 27.1    | 24.1    | 23.0    | 24.9           | 26.1             | 21.2             | 23                     | 22.3           |
|                                | Perinatal mortality rate in facility                                     | -       | -       | 30.9    | 28.5    | 27.8    | 32.7           | 33.5             | 29.2             | 20                     | 31.4           |

| Number of health facilities and beds                      | Clinic | CHCs | Mobile Service | District Hospital | Regional Hospital | Provincial Tertiary Hospital | Central Hospital | Specialised Hospital | Private hospitals | Beds  |
|---|--------|------|----------------|-------------------|-------------------|------------------------------|------------------|----------------------|-------------------|-------|
| Number of public sector facilities (2009) and beds (2009) | 34     | 5    | 12             | 2                 | 1                 | 0                            | 0                | 0                    |                   | 1 083 |
| Number of private sector facilities and beds (2008)       |        |      |                |                   |                   |                              |                  |                      | 7                 | 709   |

### Annual indicators for district: West Rand – DC48



## Annual indicators for West Rand District Municipality

| DC48                           | West Rand District Municipality  | Year    |         |         |         |         |                |                  |                  | District Rank (1=best) | National value |
|--------------------------------|--|---------|---------|---------|---------|---------|----------------|------------------|------------------|------------------------|----------------|
|                                |  | 2001/02 | 2002/03 | 2003/04 | 2004/05 | 2005/06 | 2006/07        | 2007/08          | 2008/09          |                        |                |
| Demographic and socio-economic | Population total   |         |         |         |         | 777 771 | 793 531        | 805 553          | 817 249          |                        | 48 272 353     |
|                                | Population Density   |         |         |         |         | -       | -              | -                | 333              |                        | 40             |
|                                | Medical aid coverage (%)   |         |         |         |         | 19.9    | 18.7           | 18.3             | -                | 11                     | 14.3           |
|                                | Access to piped water (%) - (2005-06 GHS, 2007 Comm. Survey)             |         |         |         |         | 95.9    | 95.0           | 96.7             | -                | 16                     | 88.7           |
|                                | Deprivation index - (high value = most deprived)                         | 2.47    | -       | -       | -       | 1.74    | 1.93           | 1.76             | -                | 14                     | -              |
|                                | Socio-economic quintile - (1=poor, 5=best)                               | -       | -       | -       | -       | 5       | 4              | 4                | -                | -                      | -              |
| Input                          | Total PHC expenditure per capita - (real 2008/09 prices)                 | -       | -       | -       | -       | 599     | 573            | 476              | 433              | 51                     | 794            |
|                                | Non-hospital PHC expenditure per capita - (real 2008/09 prices)          | 257     | -       | -       | -       | 305     | 265            | 262              | 223              | 52                     | 367            |
|                                | % District health services expenditure on District Management            | -       | -       | -       | -       | 12.9    | 9.5            | 12.4             | 9.6              |                        | 5.6            |
|                                | % District health services expenditure on District Hospitals             | -       | -       | -       | -       | 37.4    | 40.1           | 30.5             | 32.7             |                        | 41.8           |
|                                | PHC (Non-Hospital) Expenditure per Patient Visit - (real 2008/09 prices) | 181     | -       | -       | -       | 241     | 182            | 181              | 118              | 31                     | 128            |
|                                | Cost per PDE - (real 2008/09 prices)                                     | -       | -       | -       | -       | 1 316   | 1 274          | 1 287            | 1 266            |                        | 1096           |
| Process                        | Nurse clinical workload  | -       | -       | -       | 31.8    | 34.4    | 36.8           | 35.7             | 31.0             | 11                     | 23.3           |
|                                | Average length of stay (ALOS)  | -       | -       | 3.9     | 3.9     | 3.7     | 4.2            | 4.8              | 4.8              | 39                     | 4.3            |
|                                | Bed utilisation rate (BUR)   | -       | -       | 70.3    | 69.2    | 65.1    | 72.5           | 66.1             | 69.3             | 26                     | 66.9           |
|                                | Clinic supervision rate  | -       | -       | -       | -       | -       | 106.9          | 54.9             | 77.7             | 9                      | 61.4           |
| Output                         | Male condom distribution rate  | -       | -       | 1.0     | 2.0     | 5.3     | 3.7            | 4.7              | 12.3             | 16                     | 12.3           |
|                                | Immunisation coverage < 1 year   | -       | -       | 65.6    | 62.9    | 87.7    | 96.2           | 102.0            | 123.5            | 2                      | 89.5           |
|                                | Immunisation drop-out rate (DTP1-3)                                      | -       | -       | 8.5     | 10.7    | 7.2     | 4.2            | 4.2              | 0.1              | 12                     | 2.7            |
|                                | Measles Coverage   |         |         |         |         |         | 102.4          | 104.2            | 123.5            | 51                     | 91.8           |
|                                | Measles drop-out rate  |         |         |         |         |         | 22.6           | 34.6             | 28.4             | 52                     | 16.3           |
|                                | Caesarean section rate   | -       | -       | 11.9    | 13.7    | 14.9    | 16.5           | 17.5             | 19.1             |                        | 16.1           |
|                                | Proportion ANC clients tested for HIV                                    | -       | -       | 15.8    | 26.2    | 39.2    | 64.7           | 69.5             | 77.7             | 46                     | 86.7           |
|                                | HIV prevalence among ANC clients tested (DHIS)                           | -       | -       | 23.2    | 28.9    | 30.1    | 30.7           | 29.9             | 27.4             | 38                     | 24.3           |
|                                | HIV prevalence among ANC clients tested (survey)                         | -       | -       | -       | -       | -       | 34.6 (30-39.2) | 32.4 (28.4-36.6) | 27.8 (23.7-32.4) | 24                     | 29.3           |
|                                | Baby PCR test around 6 weeks uptake                                      |         |         |         |         |         |                |                  | 18.8             |                        |                |
|                                | Antenatal client CD4 1st test rate                                       |         |         |         |         |         |                |                  | 0.0              |                        |                |
| Outcome                        | Utilisation rate   | -       | -       | 1.3     | 1.3     | 1.4     | 1.7            | 1.7              | 2.2              | 35                     | 2.4            |
|                                | Incidence of STI treated - new   | -       | -       | 3.5     | 3.1     | 2.9     | 3.5            | 3.1              | 4.7              | 32                     | 4.6            |
|                                | TB cure rate (2003 - 2007)   | -       | -       | 72      | 73.9    | 70.6    | 77.4           | 72.4             |                  | 15                     | 64.0           |
|                                | TB smear conversion rate (2004 - 2008)                                   | -       | -       | -       | 70.3    | 70.6    | 80.7           | 84.9             | 79.1             | 6                      | 62.5           |
|                                | TB case load (new Sm+)   | -       | -       | -       | -       | -       | -              | 1 458            | 1 213            |                        | 138 803        |
|                                | Delivery rate in facility  | -       | -       | 78.5    | 96.3    | 97.1    | 105.6          | 111.7            | 114.3            | 1                      | 86.6           |
| Impact                         | Stillbirth rate  | -       | -       | 25.0    | 24.3    | 16.4    | 15.2           | 14.1             | 14.9             | 2                      | 22.3           |
|                                | Perinatal mortality rate in facility                                     | -       | -       | 39.1    | 49.2    | 27.0    | 18.0           | 20.4             | 23.9             | 8                      | 31.4           |

| Number of health facilities and beds                      | Clinic | CHCs | Mobile Service | District Hospital | Regional Hospital | Provincial Tertiary Hospital | Central Hospital | Specialised Hospital | Private hospitals | Beds  |
|---|--------|------|----------------|-------------------|-------------------|------------------------------|------------------|----------------------|-------------------|-------|
| Number of public sector facilities (2009) and beds (2009) | 29     | 2    | 8              | 1                 | 1                 | 0                            | 0                | 1                    |                   | 1 581 |
| Number of private sector facilities and beds (2008)       |        |      |                |                   |                   |                              |                  |                      | 4                 | 643   |