

Limpopo Province

Limpopo province had a population of just over 5.3 million people in 2008. In 2007, 83.6% of the population had access to piped water, the third lowest access in the country. The province has five districts, one of which is a rural ISRD district which falls into the lowest socio-economic quintile (Greater Sekhukhune), whilst the other four districts range between socio-economic quintiles 2 and 3. Sekhukhune, remains relatively under-funded and performs relatively poorly across several indicators. Vhembe district on the other hand, with relatively high deprivation, has continued the trend of good performance for many indicators.

The total PHC expenditure per capita in 2008/09 was R852⁷⁰, R58 more than the national average and fourth highest in the country. The province's non-hospital per capita expenditure on PHC had the highest annual compound growth rate (17%) in South Africa since 2005/06, while its 2008/09 expenditure of R367 was on a par with the national average. There was a wide variation of expenditure amongst the five districts, ranging from R271 in Greater Sekhukhune to R463 in Capricorn.

Almost half (49.6%) of the district's 2008/09 PHC expenditure was spent on the 32 district hospitals in the province. This proportion has decreased over the last two years from 55.3% in 2006/07. The cost per patient day equivalent in district hospitals decreased from R1255 in 2007/08 to R1125 in 2008/09, close to the national average of R1096. The 2008/09 bed utilisation rate increased from the 2007/08 rate by 3.8 percentage points to 68.1% and the average length of stay stood at 4.2 days. Vhembe had the highest bed utilisation rate in the province at 74.8%.

In 2008/09 the PHC facility utilisation rate in the province was 2.8 visits per person and this ranged from 3.6 visits per client in Vhembe (ranked sixth in South Africa) to 1.9 visits in Waterberg. The cost per patient visit to non-hospital PHC facilities was R124, ranging from R170 in Capricorn to R94 in Vhembe.

The average clinic supervision rate improved from 58.7% in 2007/08 to 66.7% in 2008/09, with Mopani being the only district recording a decrease (from 63.4% to 61.0%) whilst Greater Sekhukhune showed an increase of over 33 percentage points from 38.7% to 71.9%. The average nurse clinical workload of 17.8 patients per nurse per day in 2008/09 was the lowest among all the provinces and has remained virtually unchanged as the lowest in the country for several years. The nurse clinical workload in Waterberg at 15.3 patients per nurse per day in 2008/09 is the lowest in the country for the third successive year.

The DTP1-3 immunisation coverage increased from 78.6% in 2007/08 to 84.3% in 2008/09, although still remaining amongst the lowest in the country. The drop-out rate from DTP1 to DTP3 increased from 2.6% to 3.1% during the same period. Close to 86% of children received their first measles dose in Limpopo province in 2008/09 and 12.8% dropped out before receiving their second dose.

There were 178.3 new smear positive TB cases per 100 000 people in Limpopo in 2008, which was the lowest incidence in South Africa. Between 2006 and 2007 there was a marginal increase in the TB cure rate from 60.4% to 62.2%. Almost 50% of all new pulmonary TB cases diagnosed in 2008 tested smear positive. The smear conversion rate showed a small improvement from 56.4% in 2007 to 58.5% in 2008, although there were decreases in Mopani and Vhembe. The province needs to continue improving the management of the TB programme in order to get better results.

In 2008, Limpopo had the third lowest HIV/AIDS prevalence rate in the country at 20.7%, as measured by the national ANC survey of South Africa. The HIV prevalence among the districts in the province ranged from 25.2% in Mopani to 14.7% in Vhembe (seventh lowest district prevalence in the country). HIV testing rate among ANC clients remained static between 2007/08 and 2008/09, unlike the big increases seen in previous years.

There has been poor recording in the DHIS of the indicator measuring the proportion of infants born to known HIV positive women who were PCR tested for HIV six weeks after birth (Baby PCR test around 6 weeks uptake) as well as the indicator measuring HIV positive antenatal clients CD4 (not on HAART) tested for the first time during current pregnancy (Antenatal client CD4 1st test rate). Data are available for only two districts. It is hoped that there will be more complete data in the DHIS for the 2009/2010 DHB to report on for these key PMTCT indicators.

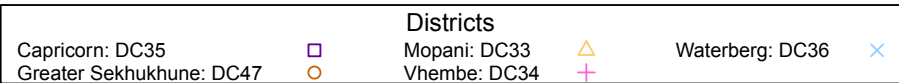
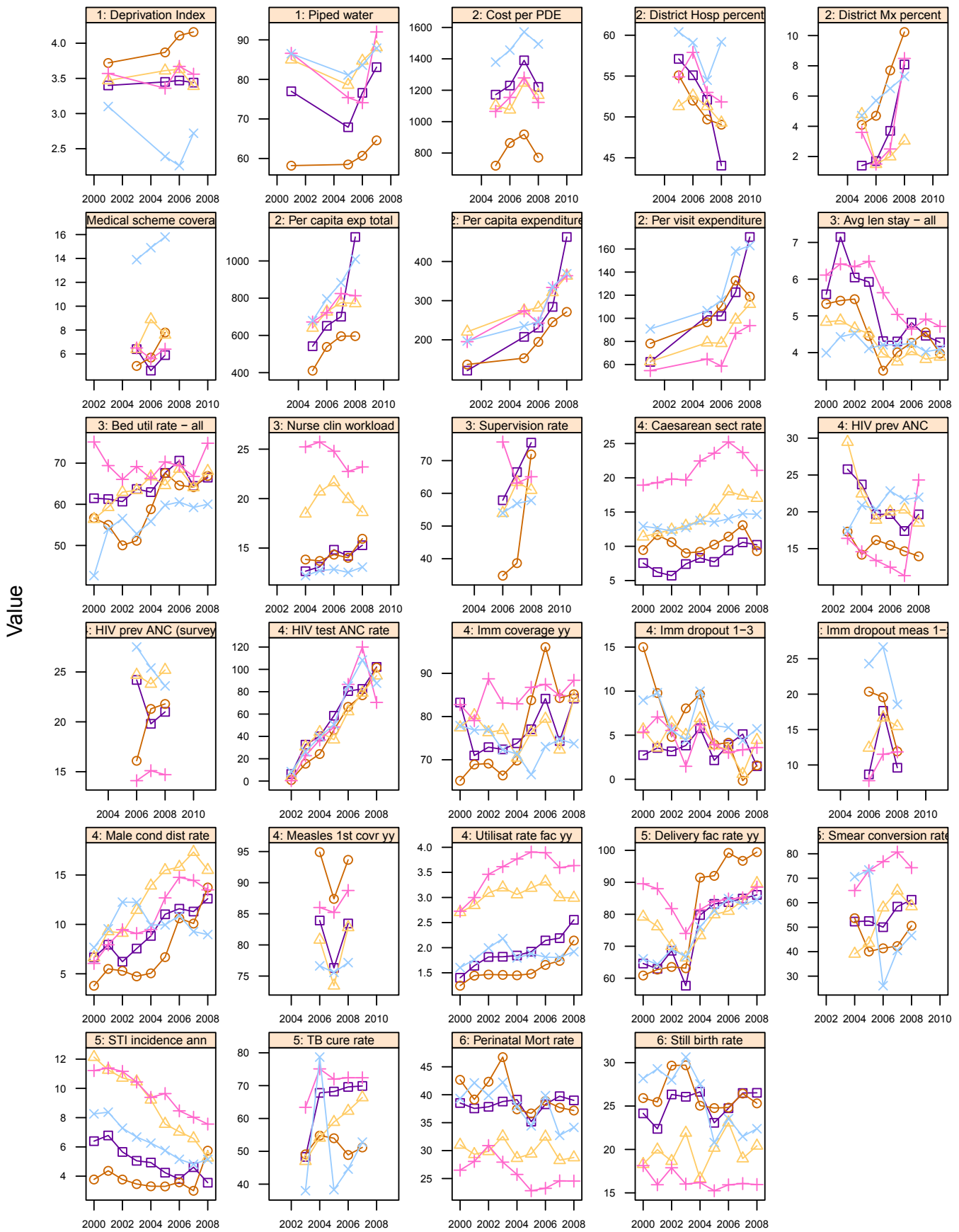
In 2008/09 Limpopo province distributed an average of 13.2 condoms per male 15 years and older, which is just above the national average of 12.3 condoms per man per year. The male condom distribution rate of 15.5 condoms per man per year in Mopani was the highest in the province and the eighth highest in

⁷⁰ Figures are in REAL prices that have been adjusted for the effects of inflation to 2008/09 prices.

the country. There was a steady decline in incidence of new STIs treated, from 7.4% in 2003/04 to 5.5% in 2008/09, which is unfortunately still above the national average of 4.6%.

The delivery rate in facility was 89.8% in 2008/09 and ranged from 84.6% in Waterberg to 99.5% in Greater Sekhukhune. The Caesarean section rate in the province's district hospitals stood at 14.7% in 2008/09 – less than the national average of 16.1%. The rate varied from 21.1% in Vhembe to 9.3% in Greater Sekhukhune, a more than two-fold difference. The stillbirth rate of 21.8 per 1000 births and the perinatal mortality rate of 32.3 per 1000 births remained almost unchanged in 2008/09. Both are close to the national averages of 22.3/1000 and 31.4/1000 respectively. Capricorn had the highest stillbirth rate (26.5/1000) and perinatal mortality rate (39/1000) in the province, whilst Vhembe had the fourth lowest stillbirth rate in the country (16/1000).

Annual indicators for districts in Limpopo (LP)

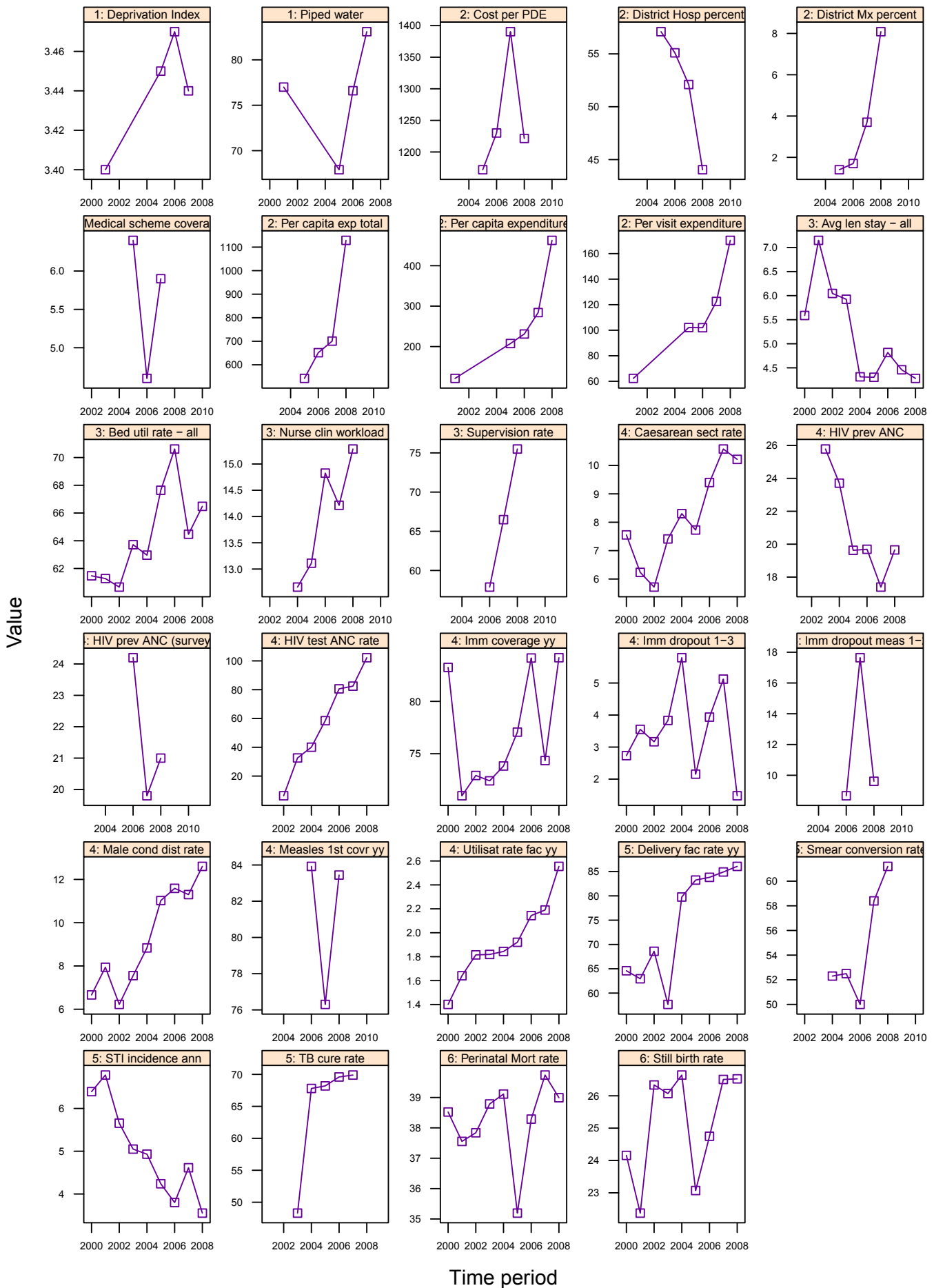


Annual indicators for Limpopo Province

LP	Limpopo	Year								District Rank (1=best)	National value	
		2001/02	2002/03	2003/04	2004/05	2005/06	2006/07	2007/08	2008/09			
Demographic and socio-economic	Population total					5 139 990	5 287 109	5 323 009	5 357 949		48 272 353	
	Population Density					-	-	-	43		40	
	Medical aid coverage (%)					6.6	6.7	7.3	-		14.3	
	Access to piped water (%) - (2005-06 GHS, 2007 Comm. Survey)					72.4	75.2	83.6	-		88.7	
	Deprivation index - (high value = most deprived)	-	-	-	-	-	-	-	-	-	-	-
	Socio-economic quintile - (1=poor, 5=best)	-	-	-	-	-	-	-	-	-	-	-
Input	Total PHC expenditure per capita - (real 2008/09 prices)	-	-	-	-	581	675	743	852	-	794	
	Non-hospital PHC expenditure per capita - (real 2008/09 prices)	161	-	-	-	229	238	301	367	-	367	
	% District health services expenditure on District Management	-	-	-	-	3.6	2.6	4.0	7.4		5.6	
	% District health services expenditure on District Hospitals	-	-	-	-	55.3	55.3	52.1	49.6		41.8	
	PHC (Non-Hospital) Expenditure per Patient Visit - (real 2008/09 prices)	69	-	-	-	82	83	109	124	-	128	
	Cost per PDE - (real 2008/09 prices)	-	-	-	-	1 057	1 131	1 255	1 125		1096	
Process	Nurse clinical workload	-	-	-	17.4	18.2	18.7	17.5	17.8	-	23.3	
	Average length of stay (ALOS)	-	-	5.3	4.3	4.3	4.4	4.4	4.2	-	4.3	
	Bed utilisation rate (BUR)	-	-	61.6	62.9	66.8	67.3	64.3	68.1	-	66.9	
	Clinic supervision rate	-	-	-	-	-	57.4	58.7	66.7	-	61.4	
Output	Male condom distribution rate	-	-	8.7	9.5	11.4	13.0	12.9	13.2	-	12.3	
	Immunisation coverage < 1 year	-	-	74.9	74.4	79.5	84.9	78.6	84.3	-	89.5	
	Immunisation drop-out rate (DTP1-3)	-	-	4.3	7.3	3.8	3.9	2.6	3.1	-	2.7	
	Measles Coverage						85.0	80.0	85.9	-	91.8	
	Measles drop-out rate						13.2	17.1	12.8	-	16.3	
	Caesarean section rate	-	-	12.2	13.0	13.7	15.4	15.8	14.7		16.1	
	Proportion ANC clients tested for HIV	-	-	25.9	36.9	47.6	75.0	90.1	90.2	-	86.7	
	HIV prevalence among ANC clients tested (DHIS)	-	-	22.8	19.6	17.4	17.4	16.2	19.3	-	24.3	
	HIV prevalence among ANC clients tested (survey)	-	-	-	-	-	20.6 (18.9-22.3)	20.4 (18.9-21.9)	20.7 (19.1-22.4)	-	29.3	
	Baby PCR test around 6 weeks uptake								2.7			
	Antenatal client CD4 1st test rate								0.9			
	Outcome	Utilisation rate	-	-	2.5	2.5	2.6	2.7	2.6	2.8	-	2.4
Incidence of STI treated - new		-	-	7.4	6.8	6.3	5.7	5.6	5.5	-	4.6	
TB cure rate (2003 - 2007)		-	-	53.6	69.5	60.8	60.4	62.2		-	64.0	
TB smear conversion rate (2004 - 2008)		-	-	-	43.2	62.0	54.3	56.4	58.5	-	62.5	
TB case load (new Sm+)		-	-	-	-	-	-	7 734	9 551		138 803	
Impact	Delivery rate in facility	-	-	65.7	80.7	84.1	86.4	86.8	89.8	-	86.6	
	Stillbirth rate	-	-	23.4	21.8	20.6	22.0	21.7	21.8	-	22.3	
	Perinatal mortality rate in facility	-	-	36.2	33.1	31.0	33.5	32.3	32.3	-	31.4	

Number of health facilities and beds	Clinic	CHCs	Mobile Service	District Hospital	Regional Hospital	Provincial Tertiary Hospital	Central Hospital	Specialised Hospital	Private hospitals	Beds
Number of public sector facilities (2009) and beds (2009)	425	28	137	32	5	2	0	4		7 954
Number of private sector facilities and beds (2008)									7	454

Annual indicators for district: Capricorn – DC35

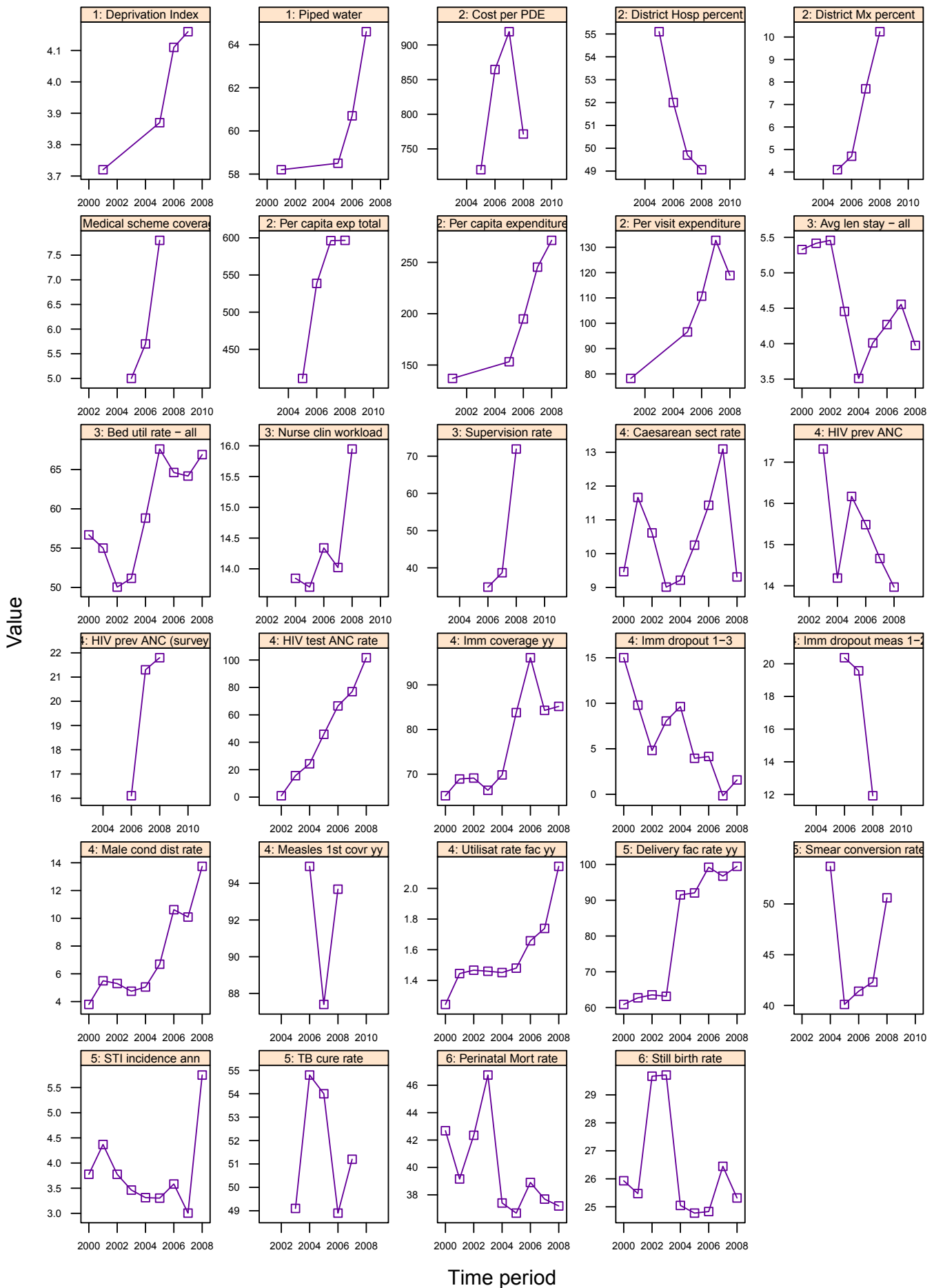


Annual indicator for Capricorn District

DC35	Capricorn District Municipality	Year								District Rank (1=best)	National value
		2001/02	2002/03	2003/04	2004/05	2005/06	2006/07	2007/08	2008/09		
Demographic and socio-economic	Population total					1 192 992	1 195 981	1 201 352	1 206 089		48 272 353
	Population Density					-	-	-	71		40
	Medical aid coverage (%)					6.4	4.6	5.9	-	41	14.3
	Access to piped water (%) - (2005-06 GHS, 2007 Comm. Survey)					67.9	76.6	83.1	-	37	88.7
	Deprivation index - (high value = most deprived)	3.40	-	-	-	3.45	3.47	3.44	-	38	-
	Socio-economic quintile - (1=poor, 5=best)	-	-	-	-	2	2	2	-	-	-
Input	Total PHC expenditure per capita - (real 2008/09 prices)	-	-	-	-	542	651	701	1 129	7	794
	Non-hospital PHC expenditure per capita - (real 2008/09 prices)	121	-	-	-	207	231	284	463	1	367
	% District health services expenditure on District Management	-	-	-	-	1.4	1.7	3.7	8.1		5.6
	% District health services expenditure on District Hospitals	-	-	-	-	57.1	55.1	52.1	44.0		41.8
	PHC (Non-Hospital) Expenditure per Patient Visit - (real 2008/09 prices)	62	-	-	-	102	102	123	170	3	128
	Cost per PDE - (real 2008/09 prices)	-	-	-	-	1 172	1 230	1 390	1 221		1096
Process	Nurse clinical workload	-	-	-	12.7	13.1	14.8	14.2	15.3	51	23.3
	Average length of stay (ALOS)	-	-	5.9	4.3	4.3	4.8	4.5	4.3	30	4.3
	Bed utilisation rate (BUR)	-	-	63.7	63.0	67.6	70.6	64.5	66.5	32	66.9
	Clinic supervision rate	-	-	-	-	-	57.9	66.5	75.5	12	61.4
Output	Male condom distribution rate	-	-	7.6	8.8	11.0	11.6	11.3	12.6	15	12.3
	Immunisation coverage < 1 year	-	-	72.4	73.8	77.1	84.1	74.3	84.2	36	89.5
	Immunisation drop-out rate (DTP1-3)	-	-	3.8	5.8	2.2	3.9	5.1	1.5	19	2.7
	Measles Coverage						83.9	76.3	83.4	15	91.8
	Measles drop-out rate						8.7	17.6	9.6	11	16.3
	Caesarean section rate	-	-	7.4	8.3	7.7	9.4	10.6	10.2		16.1
	Proportion ANC clients tested for HIV	-	-	32.6	40.1	58.5	80.6	82.5	102.2	9	86.7
	HIV prevalence among ANC clients tested (DHIS)	-	-	25.8	23.7	19.6	19.7	17.4	19.7	20	24.3
	HIV prevalence among ANC clients tested (survey)	-	-	-	-	-	24.2 (21.3-27)	19.8 (16.6-23.3)	21 (18.4-23.8)	12	29.3
	Baby PCR test around 6 weeks uptake								0.0		
	Antenatal client CD4 1st test rate								0.0		
	Outcome	Utilisation rate	-	-	1.8	1.8	1.9	2.1	2.2	2.6	28
Incidence of STI treated - new		-	-	5.0	4.9	4.2	3.8	4.6	3.6	19	4.6
TB cure rate (2003 - 2007)		-	-	48.3	67.8	68.2	69.6	69.9		21	64.0
TB smear conversion rate (2004 - 2008)		-	-	-	52.3	52.5	50.0	58.4	61.2	26	62.5
TB case load (new Sm+)		-	-	-	-	-	-	1 468	1 488		138 803
Delivery rate in facility		-	-	57.7	79.8	83.3	83.8	84.9	86.1	27	86.6
Impact	Stillbirth rate	-	-	26.1	26.6	23.1	24.7	26.5	26.5	44	22.3
	Perinatal mortality rate in facility	-	-	38.8	39.1	35.2	38.3	39.7	39.0	45	31.4

Number of health facilities and beds	Clinic	CHCs	Mobile Service	District Hospital	Regional Hospital	Provincial Tertiary Hospital	Central Hospital	Specialised Hospital	Private hospitals	Beds
Number of public sector facilities (2009) and beds (2009)	90	4	31	7	0	2	0	1		2 344
Number of private sector facilities and beds (2008)									1	186

Annual indicators for district: Greater Sekhukhune – DC47

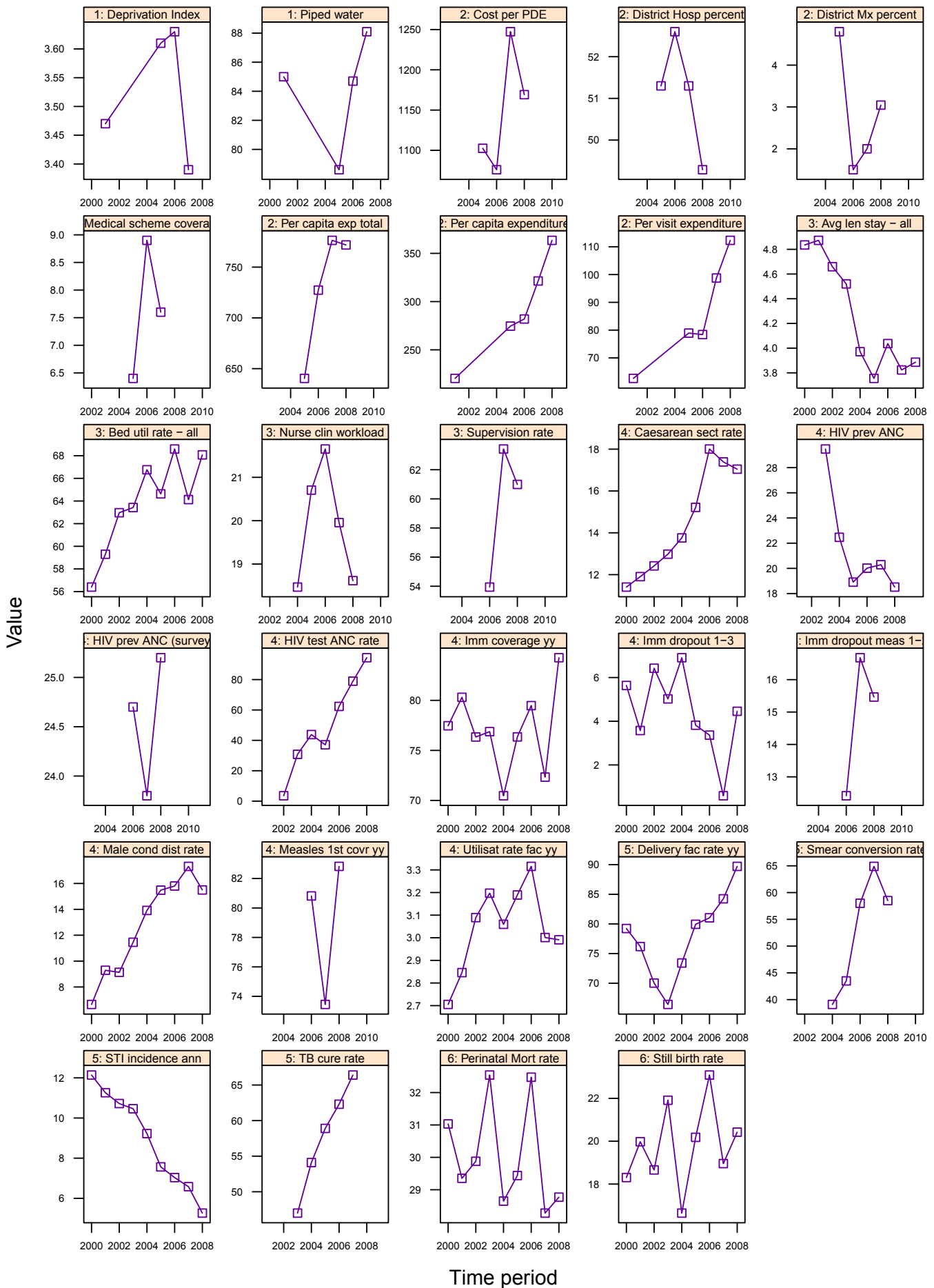


Annual indicator for Greater Sekhukhune District

DC47	Greater Sekhukhune District Municipality	Year								District Rank (1=best)	National value
		2001/02	2002/03	2003/04	2004/05	2005/06	2006/07	2007/08	2008/09		
Demographic and socio-economic	Population total					1 033 890	1 035 885	1 036 083	1 036 874		48 272 353
	Population Density					-	-	-	77		40
	Medical aid coverage (%)					5.0	5.7	7.8	-	36	14.3
	Access to piped water (%) - (2005-06 GHS, 2007 Comm. Survey)					58.5	60.7	64.6	-	45	88.7
	Deprivation index - (high value = most deprived)	3.72	-	-	-	3.87	4.11	4.16	-	47	-
	Socio-economic quintile - (1=poor, 5=best)	-	-	-	-	1	1	1	-	-	-
Input	Total PHC expenditure per capita - (real 2008/09 prices)	-	-	-	-	411	539	596	597	46	794
	Non-hospital PHC expenditure per capita - (real 2008/09 prices)	137	-	-	-	153	195	245	271	4	367
	% District health services expenditure on District Management	-	-	-	-	4.1	4.7	7.7	10.2		5.6
	% District health services expenditure on District Hospitals	-	-	-	-	55.1	52.0	49.7	49.1		41.8
	PHC (Non-Hospital) Expenditure per Patient Visit - (real 2008/09 prices)	78	-	-	-	97	111	133	119	30	128
	Cost per PDE - (real 2008/09 prices)	-	-	-	-	720	865	919	771		1096
Process	Nurse clinical workload	-	-	-	13.8	13.7	14.3	14.0	15.9	49	23.3
	Average length of stay (ALOS)	-	-	4.5	3.5	4.0	4.3	4.6	4.0	28	4.3
	Bed utilisation rate (BUR)	-	-	51.2	58.8	67.6	64.6	64.2	66.9	31	66.9
	Clinic supervision rate	-	-	-	-	-	34.8	38.7	71.9	17	61.4
Output	Male condom distribution rate	-	-	4.7	5.1	6.7	10.6	10.1	13.7	10	12.3
	Immunisation coverage < 1 year	-	-	66.4	69.8	83.8	96.1	84.3	85.2	33	89.5
	Immunisation drop-out rate (DTP1-3)	-	-	8.1	9.6	4.0	4.2	-0.2	1.6	20	2.7
	Measles Coverage						94.9	87.4	93.7	33	91.8
	Measles drop-out rate						20.4	19.6	11.9	20	16.3
	Caesarean section rate	-	-	9.0	9.2	10.3	11.4	13.1	9.3		16.1
	Proportion ANC clients tested for HIV	-	-	15.6	24.3	45.8	66.5	76.9	101.7	11	86.7
	HIV prevalence among ANC clients tested (DHIS)	-	-	17.3	14.2	16.2	15.5	14.7	14.0	9	24.3
	HIV prevalence among ANC clients tested (survey)	-	-	-	-	-	16.1 (13.5-18.6)	21.3 (18.8-24.2)	21.8 (18.4-25.6)	13	29.3
	Baby PCR test around 6 weeks uptake								0.0		
	Antenatal client CD4 1st test rate								0.0		
	Utilisation rate	-	-	1.5	1.5	1.5	1.7	1.7	2.1	36	2.4
Outcome	Incidence of STI treated - new	-	-	3.5	3.3	3.3	3.6	3.0	5.7	38	4.6
	TB cure rate (2003 - 2007)	-	-	49.1	54.8	54.0	48.9	51.2		46	64.0
	TB smear conversion rate (2004 - 2008)	-	-	-	53.7	40.1	41.4	42.3	50.6	44	62.5
	TB case load (new Sm+)	-	-	-	-	-	-	1 589	2 018		138 803
	Delivery rate in facility	-	-	63.1	91.5	92.0	99.2	96.7	99.5	8	86.6
Impact	Stillbirth rate	-	-	29.7	25.0	24.8	24.8	26.4	25.3	40	22.3
	Perinatal mortality rate in facility	-	-	46.7	37.4	36.7	38.9	37.7	37.2	40	31.4

Number of health facilities and beds	Clinic	CHCs	Mobile Service	District Hospital	Regional Hospital	Provincial Tertiary Hospital	Central Hospital	Specialised Hospital	Private hospitals	Beds
Number of public sector facilities (2009) and beds (2009)	77	6	24	5	2	0	0	0		1 231
Number of private sector facilities and beds (2008)									0	0

Annual indicators for district: Mopani – DC33

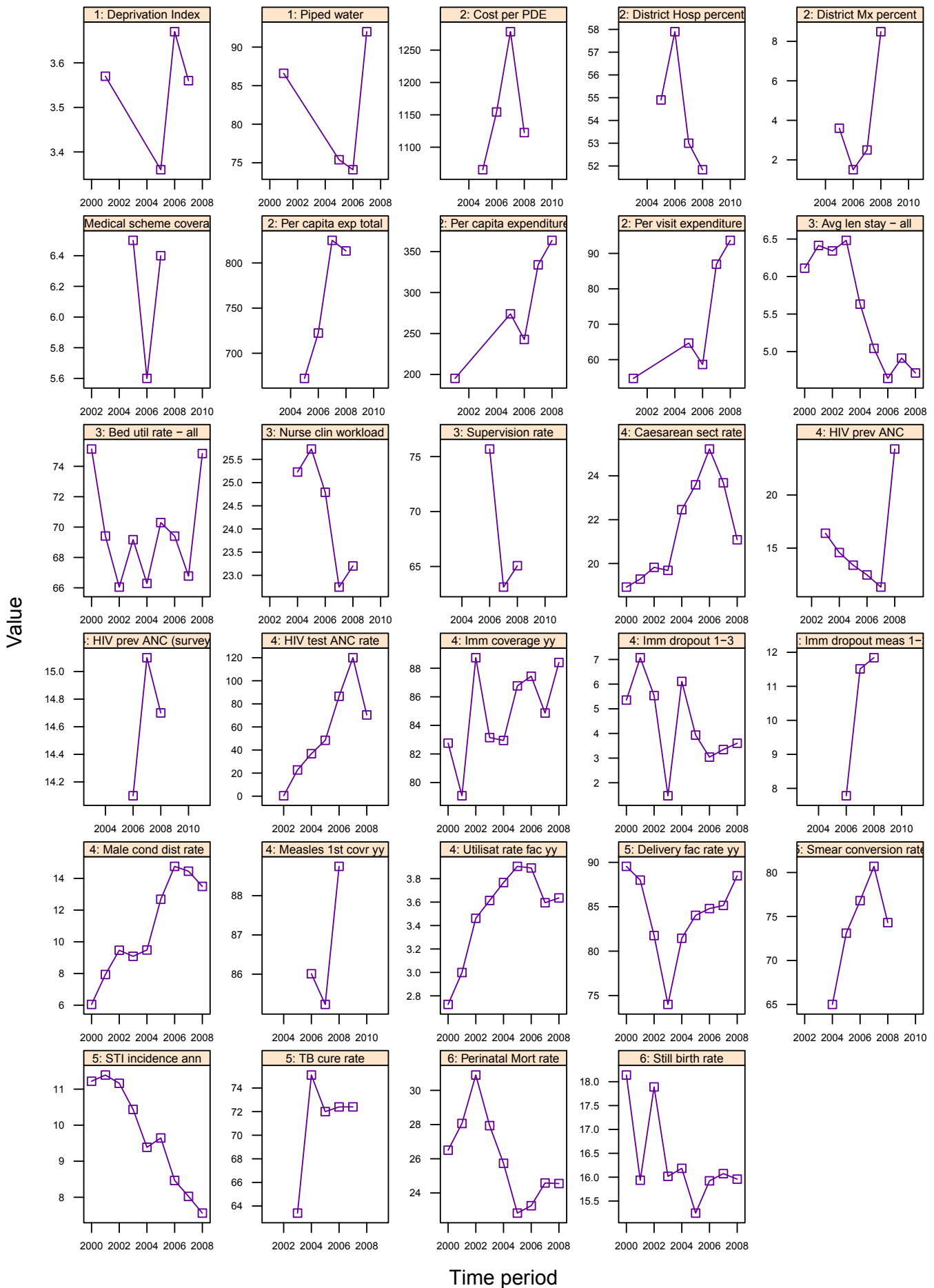


Annual indicator for Mopani District

DC33	Mopani District Municipality	Year								District Rank (1=best)	National value
		2001/02	2002/03	2003/04	2004/05	2005/06	2006/07	2007/08	2008/09		
Demographic and socio-economic	Population total					985 568	1 108 082	1 116 652	1 124 849		48 272 353
	Population Density					-	-	-	46		40
	Medical aid coverage (%)					6.4	8.9	7.6	-	37	14.3
	Access to piped water (%) - (2005-06 GHS, 2007 Comm. Survey)					78.6	84.7	88.1	-	33	88.7
	Deprivation index - (high value = most deprived)	3.47	-	-	-	3.61	3.63	3.39	-	36	-
	Socio-economic quintile - (1=poor, 5=best)	-	-	-	-	1	2	2	-	-	-
Input	Total PHC expenditure per capita - (real 2008/09 prices)	-	-	-	-	640	727	776	772	34	794
	Non-hospital PHC expenditure per capita - (real 2008/09 prices)	220	-	-	-	275	282	321	363	26	367
	% District health services expenditure on District Management	-	-	-	-	4.8	1.5	2.0	3.0		5.6
	% District health services expenditure on District Hospitals	-	-	-	-	51.3	52.6	51.3	49.3		41.8
	PHC (Non-Hospital) Expenditure per Patient Visit - (real 2008/09 prices)	63	-	-	-	79	78	99	112	35	128
	Cost per PDE - (real 2008/09 prices)	-	-	-	-	1 103	1 076	1 247	1 169		1096
Process	Nurse clinical workload	-	-	-	18.5	20.7	21.7	20.0	18.6	42	23.3
	Average length of stay (ALOS)	-	-	4.5	4.0	3.8	4.0	3.8	3.9	26	4.3
	Bed utilisation rate (BUR)	-	-	63.4	66.8	64.6	68.6	64.1	68.1	27	66.9
	Clinic supervision rate	-	-	-	-	-	53.9	63.4	61.0	28	61.4
Output	Male condom distribution rate	-	-	11.5	13.9	15.5	15.8	17.3	15.5	8	12.3
	Immunisation coverage < 1 year	-	-	76.9	70.5	76.3	79.5	72.3	84.3	35	89.5
	Immunisation drop-out rate (DTP1-3)	-	-	5.0	6.9	3.8	3.4	0.6	4.5	40	2.7
	Measles Coverage						80.8	73.5	82.8	11	91.8
	Measles drop-out rate						12.4	16.7	15.5	30	16.3
	Caesarean section rate	-	-	13.0	13.8	15.2	18.0	17.4	17.0		16.1
	Proportion ANC clients tested for HIV	-	-	30.8	43.8	37.1	62.3	79.0	94.4	25	86.7
	HIV prevalence among ANC clients tested (DHIS)	-	-	29.5	22.5	18.9	20.0	20.3	18.5	16	24.3
	HIV prevalence among ANC clients tested (survey)	-	-	-	-	-	24.7 (21.6-27.9)	23.8 (20.4-27.6)	25.2 (21.2-29.6)	19	29.3
	Baby PCR test around 6 weeks uptake								9.7		
	Antenatal client CD4 1st test rate								4.7		
	Utilisation rate	-	-	3.2	3.1	3.2	3.3	3.0	3.0	14	2.4
Outcome	Incidence of STI treated - new	-	-	10.5	9.2	7.6	7.0	6.6	5.3	35	4.6
	TB cure rate (2003 - 2007)	-	-	47	54.1	58.9	62.3	66.4		27	64.0
	TB smear conversion rate (2004 - 2008)	-	-	-	39.1	43.5	58.0	64.9	58.5	30	62.5
	TB case load (new Sm+)	-	-	-	-	-	-	1 530	2 031		138 803
	Delivery rate in facility	-	-	66.4	73.4	79.9	81.0	84.2	89.7	19	86.6
Impact	Stillbirth rate	-	-	21.9	16.6	20.2	23.1	19.0	20.4	19	22.3
	Perinatal mortality rate in facility	-	-	32.5	28.6	29.4	32.5	28.3	28.8	16	31.4

Number of health facilities and beds	Clinic	CHCs	Mobile Service	District Hospital	Regional Hospital	Provincial Tertiary Hospital	Central Hospital	Specialised Hospital	Private hospitals	Beds
Number of public sector facilities (2009) and beds (2009)	89	9	27	6	1	0	0	1		1 656
Number of private sector facilities and beds (2008)									1	64

Annual indicators for district: Vhembe – DC34

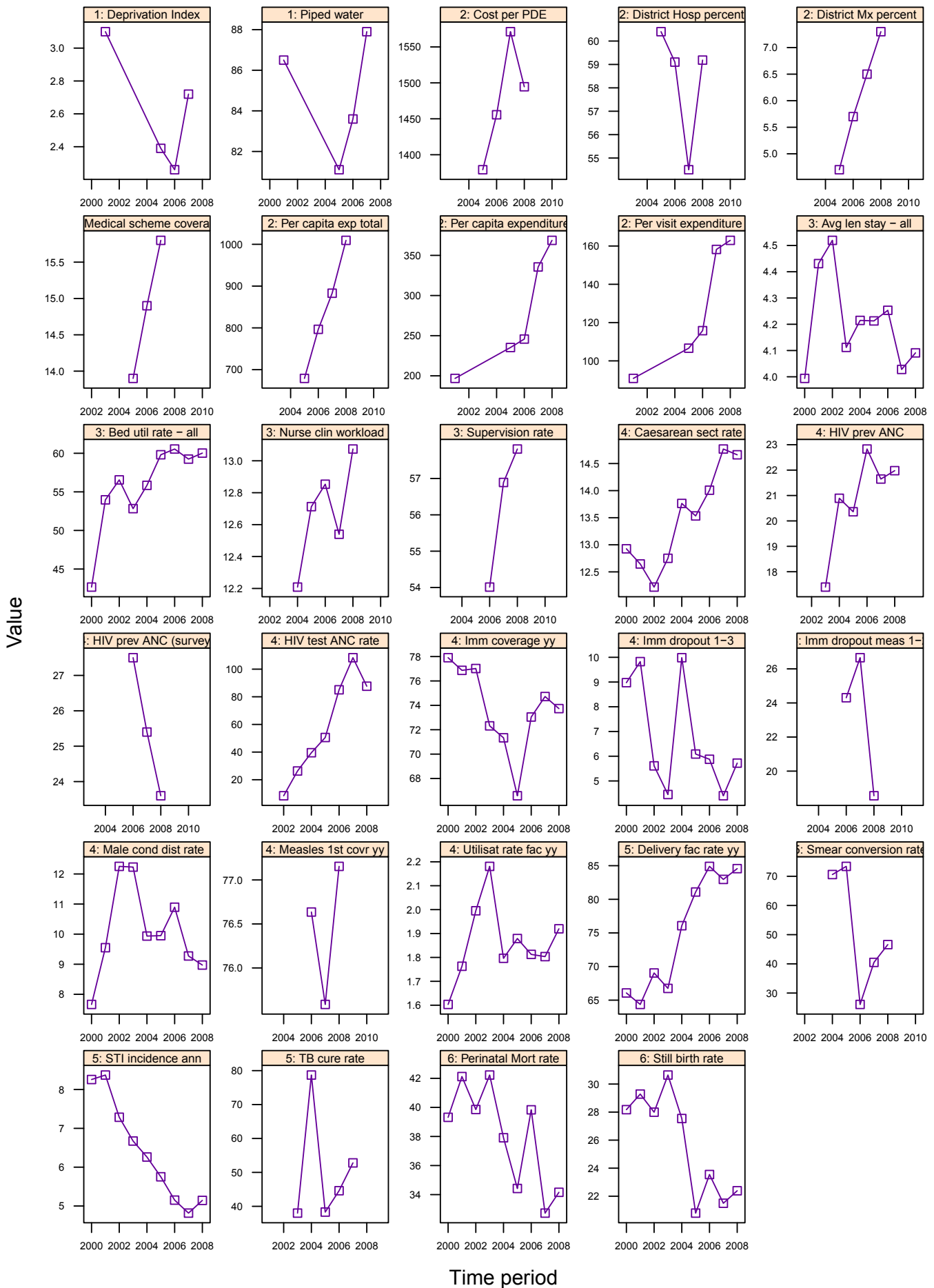


Annual indicator for Vhembe District

DC34	Vhembe District Municipality	Year								District Rank (1=best)	National value
		2001/02	2002/03	2003/04	2004/05	2005/06	2006/07	2007/08	2008/09		
Demographic and socio-economic	Population total					1 282 063	1 293 104	1 305 619	1 318 044		48 272 353
	Population Density					-	-	-	62		40
	Medical aid coverage (%)					6.5	5.6	6.4	-	40	14.3
	Access to piped water (%) - (2005-06 GHS, 2007 Comm. Survey)					75.4	74.1	92.0	-	25	88.7
	Deprivation index - (high value = most deprived)	3.57	-	-	-	3.36	3.67	3.56	-	40	-
	Socio-economic quintile - (1=poor, 5=best)	-	-	-	-	2	2	2	-	-	-
Input	Total PHC expenditure per capita - (real 2008/09 prices)	-	-	-	-	672	722	825	813	31	794
	Non-hospital PHC expenditure per capita - (real 2008/09 prices)	195	-	-	-	274	243	334	364	25	367
	% District health services expenditure on District Management	-	-	-	-	3.6	1.5	2.5	8.5		5.6
	% District health services expenditure on District Hospitals	-	-	-	-	54.9	57.9	53.0	51.8		41.8
	PHC (Non-Hospital) Expenditure per Patient Visit - (real 2008/09 prices)	55	-	-	-	65	59	87	94	49	128
	Cost per PDE - (real 2008/09 prices)	-	-	-	-	1 065	1 154	1 278	1 123		1096
Process	Nurse clinical workload	-	-	-	25.2	25.7	24.8	22.7	23.2	27	23.3
	Average length of stay (ALOS)	-	-	6.5	5.6	5.0	4.6	4.9	4.7	37	4.3
	Bed utilisation rate (BUR)	-	-	69.2	66.3	70.3	69.4	66.8	74.8	12	66.9
	Clinic supervision rate	-	-	-	-	-	75.7	63.1	65.1	25	61.4
Output	Male condom distribution rate	-	-	9.1	9.5	12.7	14.8	14.5	13.5	12	12.3
	Immunisation coverage < 1 year	-	-	83.1	82.9	86.8	87.4	84.9	88.4	24	89.5
	Immunisation drop-out rate (DTP1-3)	-	-	1.5	6.1	3.9	3.0	3.3	3.6	32	2.7
	Measles Coverage						86.0	85.2	88.7	24	91.8
	Measles drop-out rate						7.8	11.5	11.8	18	16.3
	Caesarean section rate	-	-	19.7	22.5	23.6	25.2	23.7	21.1		16.1
	Proportion ANC clients tested for HIV	-	-	22.7	36.8	48.4	86.6	120.0	70.4	50	86.7
	HIV prevalence among ANC clients tested (DHIS)	-	-	16.4	14.6	13.4	12.5	11.3	24.3	29	24.3
	HIV prevalence among ANC clients tested (survey)	-	-	-	-	-	14.1 (11.9-16.4)	15.1 (13.2-17.4)	14.7 (12.5-17.2)	7	29.3
	Baby PCR test around 6 weeks uptake								0.2		
	Antenatal client CD4 1st test rate								0.0		
Outcome	Utilisation rate	-	-	3.6	3.8	3.9	3.9	3.6	3.6	6	2.4
	Incidence of STI treated - new	-	-	10.4	9.4	9.6	8.5	8.0	7.6	49	4.6
	TB cure rate (2003 - 2007)	-	-	63.4	75.1	72.0	72.4	72.4		15	64.0
	TB smear conversion rate (2004 - 2008)	-	-	-	65.0	73.1	76.8	80.7	74.3	11	62.5
	TB case load (new Sm+)	-	-	-	-	-	-	1 673	2 371		138 803
	Delivery rate in facility	-	-	74.0	81.4	84.0	84.8	85.1	88.5	23	86.6
Impact	Stillbirth rate	-	-	16.0	16.2	15.2	15.9	16.1	16.0	4	22.3
	Perinatal mortality rate in facility	-	-	27.9	25.7	22.8	23.3	24.6	24.6	10	31.4

Number of health facilities and beds	Clinic	CHCs	Mobile Service	District Hospital	Regional Hospital	Provincial Tertiary Hospital	Central Hospital	Specialised Hospital	Private hospitals	Beds
Number of public sector facilities (2009) and beds (2009)	112	8	22	7	1	0	0	1		1 774
Number of private sector facilities and beds (2008)									0	0

Annual indicators for district: Waterberg – DC36



Annual indicator for Waterberg District

DC36	Waterberg District Municipality	Year								District Rank (1=best)	National value
		2001/02	2002/03	2003/04	2004/05	2005/06	2006/07	2007/08	2008/09		
Demographic and socio-economic	Population total					645 477	654 057	663 303	672 093		48 272 353
	Population Density					-	-	-	14		40
	Medical aid coverage (%)					13.9	14.9	15.8	-	15	14.3
	Access to piped water (%) - (2005-06 GHS, 2007 Comm. Survey)					81.1	83.6	87.9	-	35	88.7
	Deprivation index - (high value = most deprived)	3.10	-	-	-	2.39	2.26	2.72	-	29	-
	Socio-economic quintile - (1=poor, 5=best)	-	-	-	-	3	3	3	-	-	-
Input	Total PHC expenditure per capita - (real 2008/09 prices)	-	-	-	-	679	797	883	1 010	11	794
	Non-hospital PHC expenditure per capita - (real 2008/09 prices)	197	-	-	-	235	246	336	369	10	367
	% District health services expenditure on District Management	-	-	-	-	4.7	5.7	6.5	7.3		5.6
	% District health services expenditure on District Hospitals	-	-	-	-	60.4	59.1	54.5	59.2		41.8
	PHC (Non-Hospital) Expenditure per Patient Visit - (real 2008/09 prices)	91	-	-	-	107	116	158	163	6	128
	Cost per PDE - (real 2008/09 prices)	-	-	-	-	1 379	1 456	1 571	1 495		1096
Process	Nurse clinical workload	-	-	-	12.2	12.7	12.9	12.5	13.1	52	23.3
	Average length of stay (ALOS)	-	-	4.1	4.2	4.2	4.3	4.0	4.1	29	4.3
	Bed utilisation rate (BUR)	-	-	52.8	55.8	59.8	60.5	59.2	60.0	42	66.9
	Clinic supervision rate	-	-	-	-	-	54.0	56.9	57.8	29	61.4
Output	Male condom distribution rate	-	-	12.2	9.9	9.9	10.9	9.3	9.0	29	12.3
	Immunisation coverage < 1 year	-	-	72.3	71.3	66.6	73.0	74.7	73.7	47	89.5
	Immunisation drop-out rate (DTP1-3)	-	-	4.5	10.0	6.1	5.9	4.4	5.7	42	2.7
	Measles Coverage						76.6	75.6	77.2	6	91.8
	Measles drop-out rate						24.3	26.7	18.6	38	16.3
	Caesarean section rate	-	-	12.8	13.8	13.5	14.0	14.8	14.7		16.1
	Proportion ANC clients tested for HIV	-	-	26.3	39.6	50.6	85.1	108.3	87.7	35	86.7
	HIV prevalence among ANC clients tested (DHIS)	-	-	17.4	20.9	20.4	22.8	21.6	22.0	23	24.3
	HIV prevalence among ANC clients tested (survey)	-	-	-	-	-	27.5 (23.7-31.3)	25.4 (21.3-29.9)	23.6 (18.2-30.1)	16	29.3
	Baby PCR test around 6 weeks uptake								0.0		
	Antenatal client CD4 1st test rate								0.0		
Outcome	Utilisation rate	-	-	2.2	1.8	1.9	1.8	1.8	1.9	44	2.4
	Incidence of STI treated - new	-	-	6.7	6.3	5.8	5.2	4.8	5.1	34	4.6
	TB cure rate (2003 - 2007)	-	-	38	78.7	38.3	44.6	52.8		43	64.0
	TB smear conversion rate (2004 - 2008)	-	-	-	70.6	73.4	26.1	40.5	46.6	49	62.5
	TB case load (new Sm+)	-	-	-	-	-	-	1 474	1 643		138 803
Impact	Delivery rate in facility	-	-	66.7	76.1	81.1	84.9	83.0	84.6	29	86.6
	Stillbirth rate	-	-	30.6	27.5	20.8	23.5	21.5	22.4	30	22.3
	Perinatal mortality rate in facility	-	-	42.2	37.9	34.4	39.8	32.7	34.2	36	31.4

Number of health facilities and beds	Clinic	CHCs	Mobile Service	District Hospital	Regional Hospital	Provincial Tertiary Hospital	Central Hospital	Specialised Hospital	Private hospitals	Beds
Number of public sector facilities (2009) and beds (2009)	57	1	33	7	1	0	0	1		949
Number of private sector facilities and beds (2008)									5	204