

Part B: National, Provincial and District Profiles

Naomi Massyn

13 South Africa

In 2015, South Africa had an estimated population of more than 55.1 million, with a population density of 45.2 people per km² and an estimated medical scheme coverage of 17.5% (Figure 1). The provincial Index of Multiple Deprivation Rank for 2011 is shown in Figure 2.^a

Figure 1: Medical scheme coverage by province, 2015

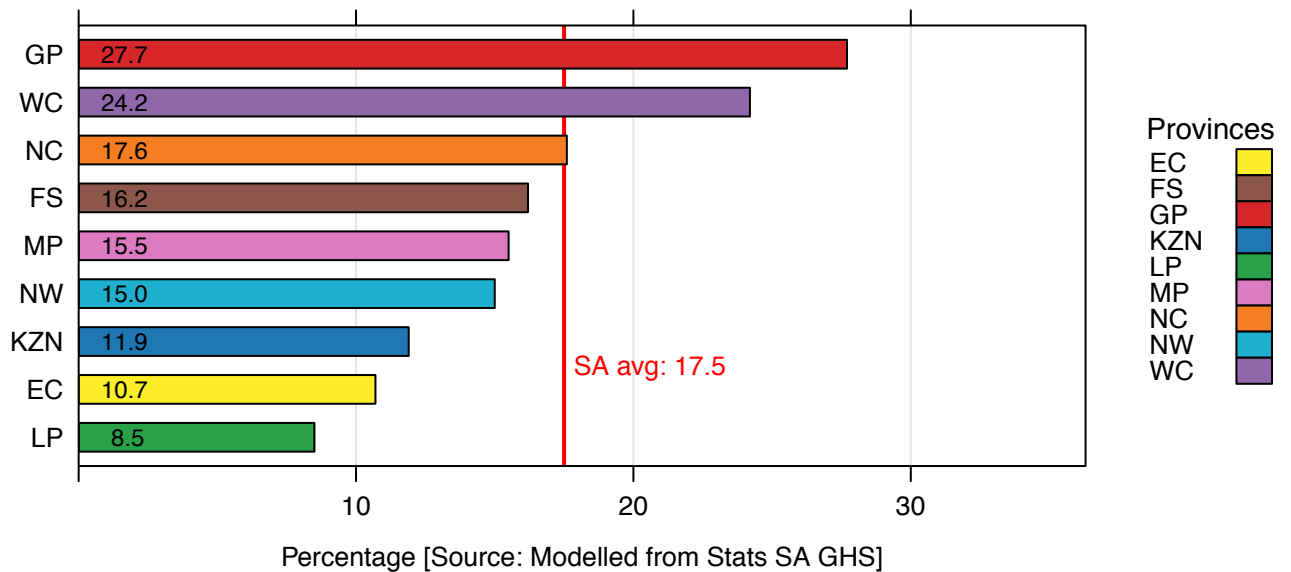
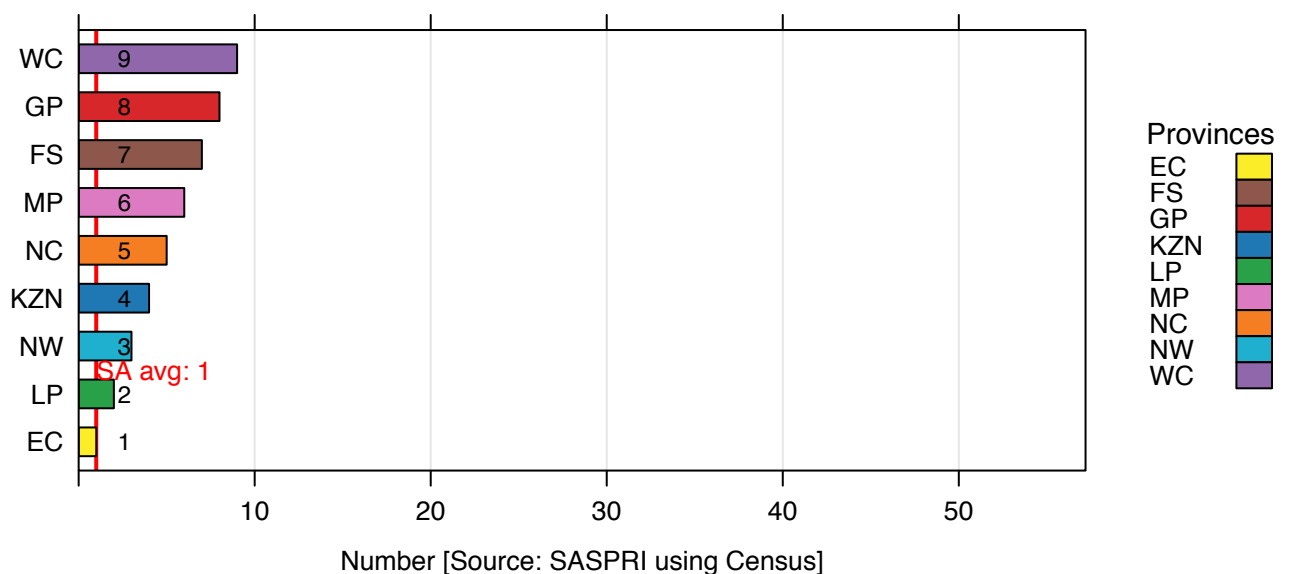


Figure 2: Index of Multiple Deprivation Rank by province, 2011^b



a Noble M, Zembe W, Wright G, Avenell D. Multiple Deprivation and Income Poverty at Small Area Level in South Africa in 2011. Cape Town: Southern African Social Policy Research Institute and Southern African Social Policy Research Insights (SASPRI); 2013.

b See section 'Deprivation index and socio-economic quintiles' on page v.

Section B: National, Provincial and District Profiles

Table 1 shows the number of health facilities nationally by category in 2015/16, while Table 2 shows the national headcount and death figures for 2013/14–2015/16.

Table 1: Number of health facilities nationally by level of care, 2015/16

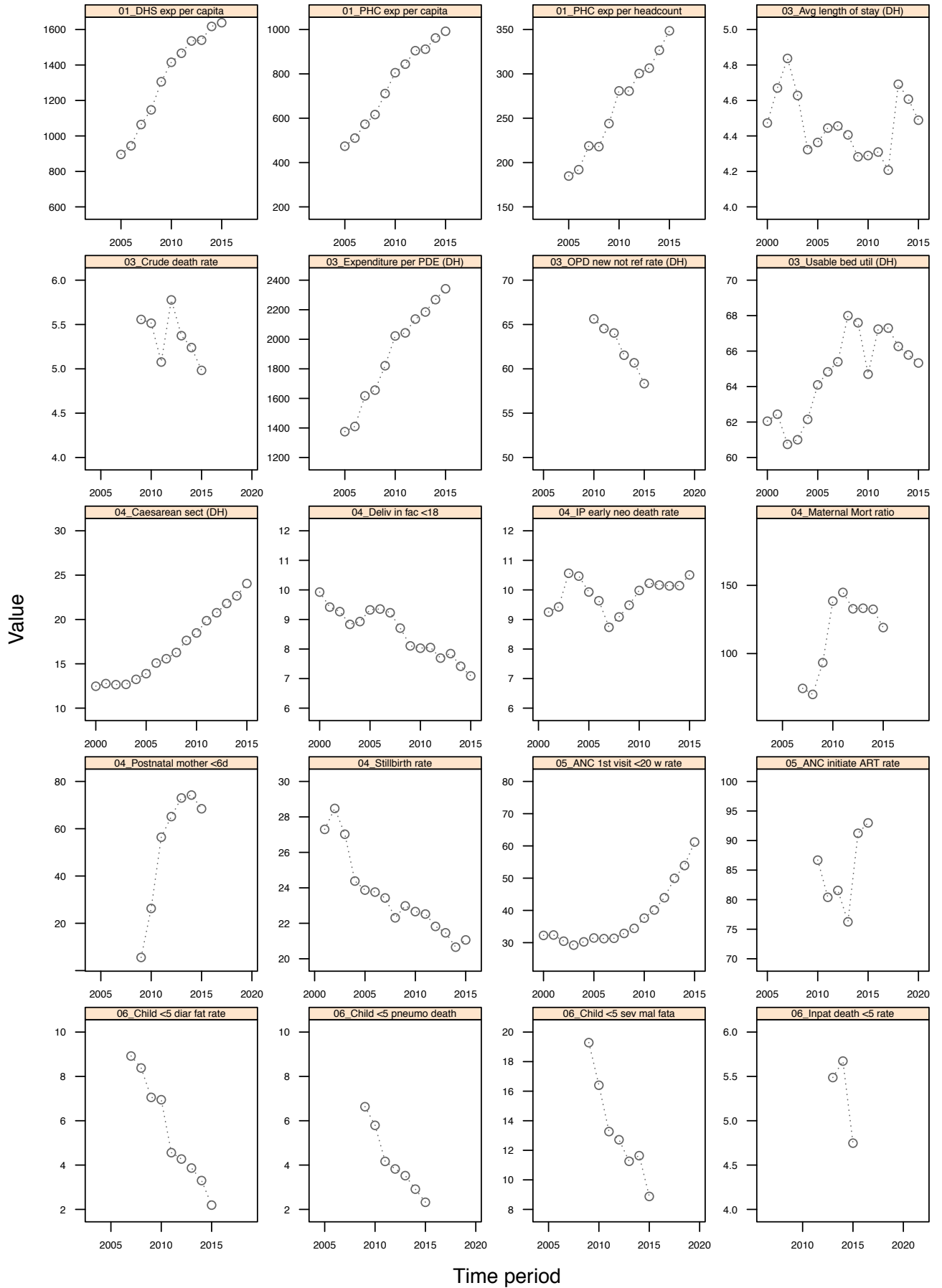
Category	Clinics	CHCs	District hospitals	Regional hospitals	Central/tertiary hospitals	Other hospitals
Number	3 198	274	253	47	27	262

Table 2: National headcount and death figures, 2013/14–2015/16

Data Element	2013/14	2014/15	2015/16
PHC headcount under 5 years	22 619 331	22 418 071	22 170 860
PHC headcount 5 years and older	105 816 917	107 060 088	104 598 206
Patient day equivalent	32 452 805	32 300 342	32 298 663
Still births	20 504	20 263	19 403
Late neonatal deaths	2 133	2 481	2 321
Early neonatal deaths	9 487	9 806	9 475
Deaths – total	192 380	189 064	190 522
Child under 5 years with severe acute malnutrition death	1 671	1 851	1 380
Child under 5 years with pneumonia death	1 524	1 411	1 240
Child under 5 years with diarrhoea death	1 769	1 514	1 049

Figure 3 shows the national annual trends for indicators included in this publication. The provincial and national averages are given in Tables 3 and 4 for the period 2010–2015. Map 1 shows the provinces, districts and sub-districts in South Africa.

Figure 3: National annual trends for all indicators



Section B: National, Provincial and District Profiles

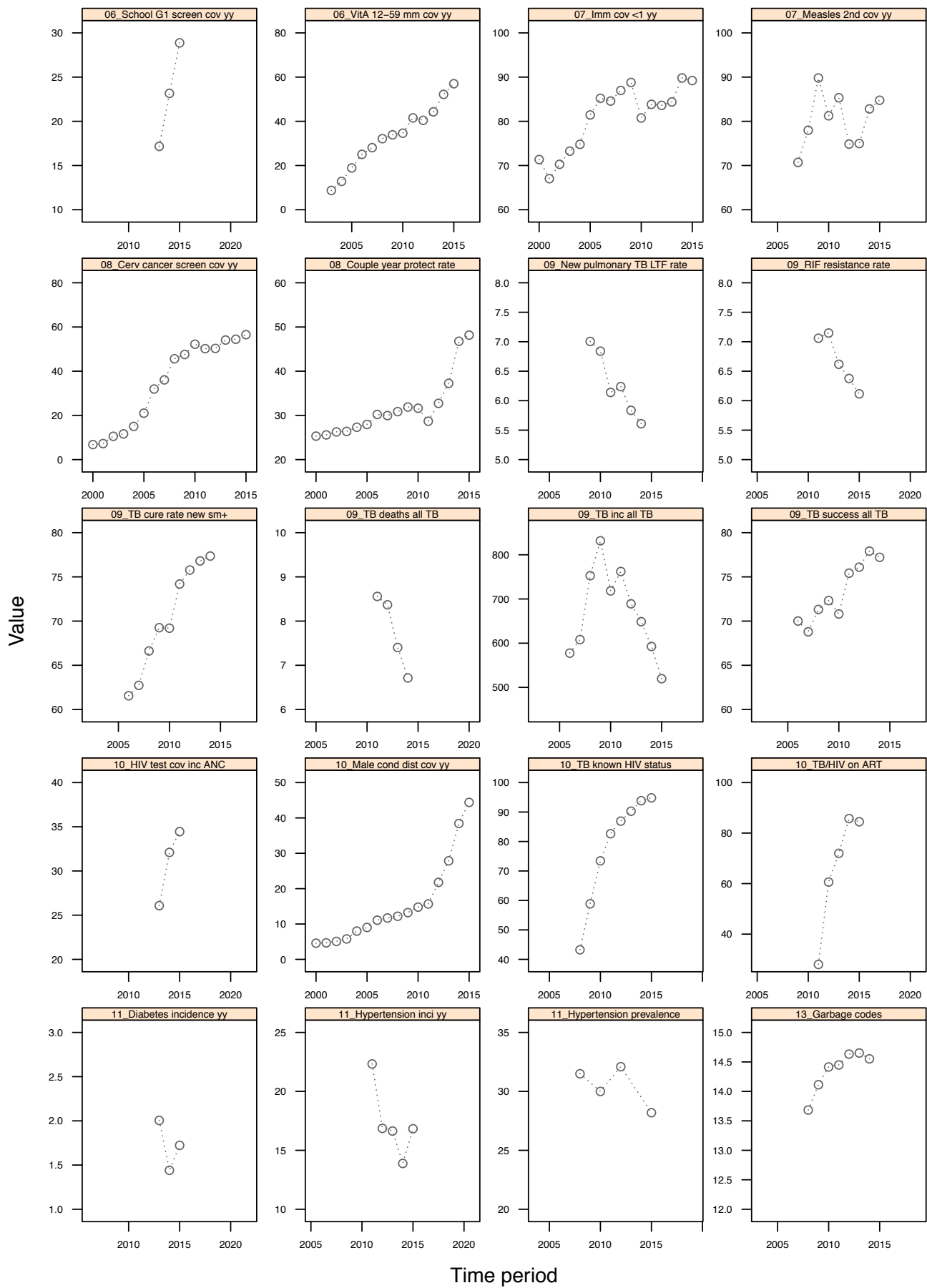


Table 3: Provincial average values for all indicators, 2010/11–2015/16

Provincial average values for all indicators: Eastern Cape

Category	Indicator	2010	2011	2012	2013	2014	2015
01_Finance	Provincial and Local Government expenditure on District Health Services per capita (total population)	1 392	1 410	1 475	1 468	1 451	1 438
	Provincial and Local Government expenditure on District Health Services per capita (uninsured)	1 569	1 590	1 664	1 656	1 637	1 623
	Provincial expenditure per PHC headcount	271	260	300	296	292	276
	Provincial PHC expenditure per capita (total population)	734	724	807	777	785	752
	Provincial PHC expenditure per capita (uninsured)	828	817	910	876	886	848
02_Management PHC	Percentage ideal clinics						10.2
	Percentage of fixed PHC facilities with patients that have access to a medical practitioner						1.8
03_Management Inpatients	Average length of stay (district hospitals)	5.1	5.0	5.0	5.3	5.3	5.1
	Expenditure per Patient Day Equivalent (district hospitals)	1 942	2 015	2 038	2 149	2 130	2 217
	Inpatient bed utilisation rate (district hospitals)	65.6	64.7	62.1	59.5	59.0	57.2
	Inpatient crude death rate		6.2	7.4	6.7	6.3	6.3
	OPD new client not referred rate (district hospitals)	58.3	65.7	67.4	65.8	64.3	63.8
04_Delivery	Delivery by Caesarean section rate (district hospitals)	13.6	16.2	18.5	19.4	20.6	22.7
	Delivery in facility under 18 years rate	10.6	10.6	10.3	10.1	9.6	9.0
	Inpatient early neonatal death rate	13.2	14.5	16.4	14.1	13.3	12.8
	Maternal mortality in facility ratio	147.9	114.9	109.5	156.2	148.3	135.2
	Mother postnatal visit within 6 days rate	17.1	48.5	55.5	54.6	58.0	58.2
	Stillbirth rate in facility	22.4	22.3	21.8	20.6	19.6	21.6
05_PMTCT	Antenatal 1st visits before 20 weeks rate	31.7	33.6	39.6	43.3	48.8	59.7
	Antenatal client initiated on ART rate	82.1	70.4	80.5	79.0	91.7	93.9
	HIV PCR birth testing coverage						1.2
	Percentage PCR tests positive within the first six days						1.4
06_Child Health	Child under 5 years diarrhoea case fatality rate	10.3	7.4	6.6	6.9	5.2	3.6
	Child under 5 years pneumonia case fatality rate	6.6	4.9	4.4	5.7	4.2	3.7
	Child under 5 years severe acute malnutrition case fatality rate	21.7	17.7	15.2	14.0	11.8	10.1
	Inpatient death under 5 years rate				6.3	6.2	5.3
	School Grade 1 screening coverage				17.1	13.4	19.0
	Vitamin A coverage 12 to 59 months	36.5	41.8	40.1	44.7	53.0	63.7
07_Immunisation	Immunisation coverage under 1 year	69.2	71.7	72.3	72.3	80.9	86.8
	Measles 2nd dose coverage	78.1	80.0	65.6	67.6	73.6	81.1
08_Reproductive health	Cervical cancer screening coverage	36.2	36.9	37.6	46.0	56.3	57.4
	Couple year protection rate	30.4	28.9	29.1	30.9	39.4	53.5
09_TB	TB incidence (all types)	922.3	913.7	862.7	823.1	785.0	691.7
	TB rifampicin resistance confirmed client rate		7.6	6.9	6.2	6.0	5.7
	TB cure rate (new pulmonary smear-positive)	67.0	67.7	65.8	70.5	72.2	
	TB loss to follow up rate (new pulmonary smear-positive)	7.7	7.7	8.5	7.7	6.5	
	TB MDR treatment success rate				33.9		
	TB successful treatment rate (all TB)	71.3	72.5	71.9	77.0	76.2	
	TB death rate (all TB)		10.8	10.8	9.3	7.6	
10_HIV	HIV testing coverage (including ANC)				30.5	36.0	37.3
	Male condom distribution coverage	14.5	15.8	16.6	17.6	33.6	54.0
	Percentage of TB cases with known HIV status	68.8	80.4	86.3	88.4	93.4	95.3
	TB/HIV co-infected client on ART rate		27.1	66.9	87.5	91.7	95.7
11_NCDs	Diabetes mellitus incidence				2.0	1.6	1.8
	Hypertension incidence		25.1	19.5	18.2	15.7	19.6
	Hypertension prevalence rate (crude)	32.7		36.1			30.3
12_Human Resources	Percentage of fixed PHC facilities with staffing in line with WISN						0.4
	Percentage fixed PHC facilities with performance management agreement for all staff						10.0

Section B: National, Provincial and District Profiles

Provincial average values for all indicators: Free State

Category	Indicator	2010	2011	2012	2013	2014	2015
01_Finance	Provincial and Local Government expenditure on District Health Services per capita (total population)	1 144	1 191	1 253	1 241	1 302	1 337
	Provincial and Local Government expenditure on District Health Services per capita (uninsured)	1 382	1 440	1 516	1 503	1 578	1 622
	Provincial expenditure per PHC headcount	285	280	282	306	323	356
	Provincial PHC expenditure per capita (total population)	685	734	770	765	796	841
	Provincial PHC expenditure per capita (uninsured)	827	888	931	927	965	1 021
02_Management PHC	Percentage ideal clinics						20.8
	Percentage of fixed PHC facilities with patients that have access to a medical practitioner						10.0
03_Management Inpatients	Average length of stay (district hospitals)	3.1	3.2	3.1	3.9	3.2	3.3
	Expenditure per Patient Day Equivalent (district hospitals)	2 132	2 035	2 007	2 131	2 298	2 311
	Inpatient bed utilisation rate (district hospitals)	62.6	66.5	68.2	65.1	60.0	61.4
	Inpatient crude death rate		5.8	6.2	6.4	6.1	5.8
	OPD new client not referred rate (district hospitals)	68.6	63.5	60.0	67.4	71.2	68.1
04_Delivery	Delivery by Caesarean section rate (district hospitals)	12.6	13.9	16.2	17.6	17.1	16.0
	Delivery in facility under 18 years rate	7.7	7.7	7.3	7.1	7.1	6.5
	Inpatient early neonatal death rate	12.4	11.7	10.8	12.3	10.5	10.6
	Maternal mortality in facility ratio	237.2	199.1	132.7	143.4	217.8	130.2
	Mother postnatal visit within 6 days rate	47.4	82.0	82.3	83.9	80.8	71.2
	Stillbirth rate in facility	30.9	29.1	25.1	27.4	25.4	27.1
	Antenatal 1st visits before 20 weeks rate	45.2	47.1	53.5	56.8	58.6	62.9
05_PMTCT	Antenatal client initiated on ART rate	49.6	68.4	82.1	80.8	88.7	86.8
	HIV PCR birth testing coverage						3.6
	Percentage PCR tests positive within the first six days						1.1
	Child under 5 years diarrhoea case fatality rate	15.0	5.8	3.6	4.5	4.1	2.8
06_Child Health	Child under 5 years pneumonia case fatality rate	10.6	9.0	3.5	3.1	3.1	2.4
	Child under 5 years severe acute malnutrition case fatality rate	24.6	13.3	8.8	11.9	12.2	8.1
	Inpatient death under 5 years rate				7.2	5.1	5.1
	School Grade 1 screening coverage				21.0	24.4	24.8
	Vitamin A coverage 12 to 59 months	39.1	57.8	59.3	54.8	58.7	58.7
	Immunisation coverage under 1 year	94.3	96.6	96.2	86.6	90.1	86.2
07_Immunisation	Measles 2nd dose coverage	75.4	82.4	85.8	80.0	81.3	92.3
	Cervical cancer screening coverage	38.1	43.6	50.3	51.1	40.9	58.1
08_Reproductive health	Couple year protection rate	32.4	31.9	36.6	34.9	43.7	57.4
	TB incidence (all types)	837.2	841.5	760.6	720.9	631.7	574.8
09_TB	TB rifampicin resistance confirmed client rate		5.8	6.2	5.7	5.6	5.5
	TB cure rate (new pulmonary smear-positive)	72.7	72.4	73.5	75.8	75.2	
	TB loss to follow up rate (new pulmonary smear-positive)	4.8	4.7	5.6	4.3	5.2	
	TB MDR treatment success rate				41.7		
	TB successful treatment rate (all TB)	72.0	73.3	73.2	76.8	78.0	
	TB death rate (all TB)		12.8	12.6	11.1	10.7	
	HIV testing coverage (including ANC)				31.8	26.2	31.6
10_HIV	Male condom distribution coverage	9.9	13.0	20.1	18.5	34.1	54.0
	Percentage of TB cases with known HIV status	71.8	81.5	87.1	89.1	91.8	93.0
	TB/HIV co-infected client on ART rate		49.8	78.8	78.4	85.9	84.5
	Diabetes mellitus incidence				1.7	1.1	1.1
11_NCDs	Hypertension incidence		15.3	16.2	18.0	12.8	17.0
	Hypertension prevalence rate (crude)	36.3		32.6			28.4
	Percentage of fixed PHC facilities with staffing in line with WISN						3.6
12_Human Resources	Percentage fixed PHC facilities with performance management agreement for all staff						20.8

Provincial average values for all indicators: Gauteng Province

Category	Indicator	2010	2011	2012	2013	2014	2015
01_Finance	Provincial and Local Government expenditure on District Health Services per capita (total population)	793	844	944	875	934	983
	Provincial and Local Government expenditure on District Health Services per capita (uninsured)	1 133	1 208	1 351	1 252	1 337	1 409
	Provincial expenditure per PHC headcount	361	349	394	372	400	464
	Provincial PHC expenditure per capita (total population)	605	638	731	691	732	773
	Provincial PHC expenditure per capita (uninsured)	866	912	1 046	989	1 048	1 107
02_Management PHC	Percentage ideal clinics						33.2
	Percentage of fixed PHC facilities with patients that have access to a medical practitioner						24.3
03_Management Inpatients	Average length of stay (district hospitals)	3.3	3.5	3.2	4.5	4.3	4.4
	Expenditure per Patient Day Equivalent (district hospitals)	2 491	2 399	2 478	2 402	2 766	2 656
	Inpatient bed utilisation rate (district hospitals)	62.6	65.2	66.3	67.8	60.7	65.8
	Inpatient crude death rate		4.7	5.7	5.4	5.4	4.7
	OPD new client not referred rate (district hospitals)	60.9	71.5	53.2	49.2	46.9	52.3
04_Delivery	Delivery by Caesarean section rate (district hospitals)	19.3	21.8	21.2	22.3	24.0	25.6
	Delivery in facility under 18 years rate	5.7	5.6	4.8	5.7	4.8	5.0
	Inpatient early neonatal death rate	9.6	9.7	8.8	9.3	9.7	9.5
	Maternal mortality in facility ratio	93.8	123.3	116.5	104.5	112.6	107.6
	Mother postnatal visit within 6 days rate	14.4	72.0	85.1	86.5	85.5	76.9
	Stillbirth rate in facility	20.3	21.2	19.9	20.2	19.6	19.5
05_PMTCT	Antenatal 1st visits before 20 weeks rate	30.6	34.6	37.8	43.7	48.4	54.9
	Antenatal client initiated on ART rate	60.1	80.5	83.0	63.1	87.4	92.4
	HIV PCR birth testing coverage						1.0
	Percentage PCR tests positive within the first six days						1.1
06_Child Health	Child under 5 years diarrhoea case fatality rate	7.6	4.5	3.3	3.5	2.9	1.8
	Child under 5 years pneumonia case fatality rate	5.5	3.6	2.3	2.5	2.1	1.9
	Child under 5 years severe acute malnutrition case fatality rate	13.4	12.5	12.1	6.1	9.3	7.5
	Inpatient death under 5 years rate				6.2	7.8	6.1
	School Grade 1 screening coverage				32.9	31.1	37.8
	Vitamin A coverage 12 to 59 months	43.7	47.1	45.6	49.9	56.6	58.8
07_Immunisation	Immunisation coverage under 1 year	105.3	106.5	102.6	109.0	107.7	106.4
	Measles 2nd dose coverage	91.4	91.3	86.8	85.1	94.9	92.0
08_Reproductive health	Cervical cancer screening coverage	51.4	38.2	37.4	41.8	43.6	45.1
	Couple year protection rate	26.3	20.1	21.7	25.0	38.7	42.1
09_TB	TB incidence (all types)	113.6	454.1	418.2	403.3	378.2	329.9
	TB rifampicin resistance confirmed client rate		6.1	6.8	6.5	5.7	5.9
	TB cure rate (new pulmonary smear-positive)	79.9	81.1	83.0	84.2	85.1	
	TB loss to follow up rate (new pulmonary smear-positive)	4.9	5.1	5.3	4.9	4.8	
	TB MDR treatment success rate				41.1		
	TB successful treatment rate (all TB)	78.6	80.7	81.8	82.6	83.4	
	TB death rate (all TB)		6.9	6.9	6.3	6.2	
10_HIV	HIV testing coverage (including ANC)				15.5	23.3	32.6
	Male condom distribution coverage	8.3	7.2	9.3	14.2	25.8	37.9
	Percentage of TB cases with known HIV status	72.7	82.5	89.8	92.8	95.5	95.9
	TB/HIV co-infected client on ART rate		34.1	65.5	75.4	88.7	84.9
11_NCDs	Diabetes mellitus incidence				2.5	0.9	1.5
	Hypertension incidence		23.6	16.8	15.6	13.1	19.1
	Hypertension prevalence rate (crude)	29.8		31.1			27.7
12_Human Resources	Percentage of fixed PHC facilities with staffing in line with WISN						3.3
	Percentage fixed PHC facilities with performance management agreement for all staff						25.1

Section B: National, Provincial and District Profiles

Provincial average values for all indicators: KwaZulu-Natal

Category	Indicator	2010	2011	2012	2013	2014	2015
01_Finance	Provincial and Local Government expenditure on District Health Services per capita (total population)	1 307	1 345	1 386	1 434	1 502	1 514
	Provincial and Local Government expenditure on District Health Services per capita (uninsured)	1 489	1 532	1 578	1 632	1 710	1 724
	Provincial expenditure per PHC headcount	263	261	264	273	307	330
	Provincial PHC expenditure per capita (total population)	683	744	793	833	907	954
	Provincial PHC expenditure per capita (uninsured)	778	848	903	948	1 032	1 086
02_Management PHC	Percentage ideal clinics						30.7
	Percentage of fixed PHC facilities with patients that have access to a medical practitioner						23.5
03_Management Inpatients	Average length of stay (district hospitals)	5.8	5.8	5.6	5.8	5.8	5.7
	Expenditure per Patient Day Equivalent (district hospitals)	1 692	1 808	2 042	2 117	2 129	2 241
	Inpatient bed utilisation rate (district hospitals)	61.7	63.7	63.2	64.6	62.8	60.2
	Inpatient crude death rate		5.5	5.8	5.3	5.1	5.2
	OPD new client not referred rate (district hospitals)	47.3	49.3	52.2	52.7	53.0	47.7
04_Delivery	Delivery by Caesarean section rate (district hospitals)	24.4	26.0	27.0	27.7	27.8	28.8
	Delivery in facility under 18 years rate	8.7	9.3	9.3	9.3	8.9	8.7
	Inpatient early neonatal death rate	9.0	9.2	8.7	10.4	10.3	10.8
	Maternal mortality in facility ratio	196.9	192.2	165.5	148.4	124.9	121.1
	Mother postnatal visit within 6 days rate	40.6	57.3	69.4	72.2	66.4	69.8
	Stillbirth rate in facility	22.8	23.4	23.3	23.2	21.1	22.3
05_PMTCT	Antenatal 1st visits before 20 weeks rate	36.9	41.0	46.4	56.2	57.3	64.8
	Antenatal client initiated on ART rate	160.0	93.6	83.2	85.4	95.2	97.6
	HIV PCR birth testing coverage						0.7
	Percentage PCR tests positive within the first six days						0.7
06_Child Health	Child under 5 years diarrhoea case fatality rate	6.8	4.3	4.3	3.3	3.0	2.2
	Child under 5 years pneumonia case fatality rate	5.4	3.7	2.6	3.2	2.7	2.7
	Child under 5 years severe acute malnutrition case fatality rate	11.6	9.2	11.0	9.7	10.4	7.7
	Inpatient death under 5 years rate				5.7	5.9	5.2
	School Grade 1 screening coverage				9.4	20.7	22.1
	Vitamin A coverage 12 to 59 months	32.8	41.1	41.4	47.8	54.5	63.8
07_Immunisation	Immunisation coverage under 1 year	77.8	87.5	85.6	85.8	89.9	85.0
	Measles 2nd dose coverage	76.8	90.5	78.1	77.0	86.3	82.6
08_Reproductive health	Cervical cancer screening coverage	58.2	73.9	78.2	75.3	70.3	72.7
	Couple year protection rate	24.2	25.6	35.8	45.0	57.8	52.1
09_TB	TB incidence (all types)	1 161.8	1 185.2	1 060.4	952.5	813.7	685.2
	TB rifampicin resistance confirmed client rate		7.9	8.9	8.9	8.3	7.8
	TB cure rate (new pulmonary smear-positive)	71.1	74.1	79.6	82.8	78.7	
	TB loss to follow up rate (new pulmonary smear-positive)	7.2	5.8	4.9	4.1	4.0	
	TB MDR treatment success rate				57.3		
	TB successful treatment rate (all TB)	73.7	75.9	78.4	81.8	73.8	
	TB death rate (all TB)		7.5	7.0	6.4	5.4	
10_HIV	HIV testing coverage (including ANC)				37.5	39.0	36.0
	Male condom distribution coverage	8.2	12.1	28.3	41.2	58.9	54.6
	Percentage of TB cases with known HIV status	71.9	81.1	83.9	88.8	93.1	94.2
	TB/HIV co-infected client on ART rate		17.5	50.4	66.1	81.5	82.2
11_NCDs	Diabetes mellitus incidence				1.8	1.6	2.2
	Hypertension incidence		29.6	22.4	21.9	19.1	18.6
	Hypertension prevalence rate (crude)	28.9		31.6			26.2
12_Human Resources	Percentage of fixed PHC facilities with staffing in line with WISN						2.7
	Percentage fixed PHC facilities with performance management agreement for all staff						28.5

Provincial average values for all indicators: Limpopo Province

Category	Indicator	2010	2011	2012	2013	2014	2015
01_Finance	Provincial and Local Government expenditure on District Health Services per capita (total population)	1 418	1 501	1 563	1 588	1 770	1 751
	Provincial and Local Government expenditure on District Health Services per capita (uninsured)	1 552	1 644	1 712	1 739	1 939	1 918
	Provincial expenditure per PHC headcount	237	240	260	265	286	297
	Provincial PHC expenditure per capita (total population)	621	655	683	685	733	755
	Provincial PHC expenditure per capita (uninsured)	680	717	748	750	803	827
02_Management PHC	Percentage ideal clinics						15.1
	Percentage of fixed PHC facilities with patients that have access to a medical practitioner						5.7
03_Management Inpatients	Average length of stay (district hospitals)	4.3	4.5	4.3	4.5	4.2	4.3
	Expenditure per Patient Day Equivalent (district hospitals)	2 286	2 259	2 431	2 515	2 666	2 791
	Inpatient bed utilisation rate (district hospitals)	65.2	72.4	72.2	64.2	69.1	70.4
	Inpatient crude death rate		5.7	5.9	5.7	5.6	5.4
	OPD new client not referred rate (district hospitals)	80.7	80.4	78.8	78.6	75.2	73.8
04_Delivery	Delivery by Caesarean section rate (district hospitals)	17.2	17.7	18.1	19.4	19.7	22.3
	Delivery in facility under 18 years rate	8.2	8.1	7.8	7.9	7.5	7.1
	Inpatient early neonatal death rate	10.7	11.0	11.5	11.7	11.6	12.6
	Maternal mortality in facility ratio	142.1	184.6	177.9	152.0	165.2	140.2
	Mother postnatal visit within 6 days rate	45.3	65.2	73.0	72.3	72.4	66.8
	Stillbirth rate in facility	21.9	21.3	21.8	21.1	21.4	20.3
05_PMTCT	Antenatal 1st visits before 20 weeks rate	41.6	41.3	42.0	45.8	50.7	60.7
	Antenatal client initiated on ART rate	76.6	73.1	69.4	78.6	92.9	92.8
	HIV PCR birth testing coverage						1.6
	Percentage PCR tests positive within the first six days						1.7
06_Child Health	Child under 5 years diarrhoea case fatality rate	9.2	8.1	7.8	5.2	4.7	3.0
	Child under 5 years pneumonia case fatality rate	7.3	5.5	4.8	4.7	4.2	3.1
	Child under 5 years severe acute malnutrition case fatality rate	23.3	18.7	18.5	15.3	14.9	11.6
	Inpatient death under 5 years rate				8.9	8.1	7.3
	School Grade 1 screening coverage				22.0	22.2	29.5
	Vitamin A coverage 12 to 59 months	30.3	42.9	35.8	33.8	44.4	50.0
07_Immunisation	Immunisation coverage under 1 year	76.9	74.7	71.1	70.3	82.2	79.2
	Measles 2nd dose coverage	91.2	94.2	72.4	73.5	83.3	87.9
08_Reproductive health	Cervical cancer screening coverage	55.9	54.3	50.7	55.5	47.9	50.1
	Couple year protection rate	32.7	32.4	33.3	36.3	49.2	50.4
09_TB	TB incidence (all types)	419.8	410.6	371.8	383.3	334.1	300.7
	TB rifampicin resistance confirmed client rate		7.5	6.6	4.9	4.9	5.2
	TB cure rate (new pulmonary smear-positive)	72.6	75.3	74.5	64.0	76.8	
	TB loss to follow up rate (new pulmonary smear-positive)	5.9	4.7	4.8	4.5	4.9	
	TB MDR treatment success rate				53.0		
	TB successful treatment rate (all TB)	64.5	65.7	64.5	57.6	71.8	
10_HIV	TB death rate (all TB)		13.2	13.4	11.0	11.2	
	HIV testing coverage (including ANC)				37.0	40.8	39.1
	Male condom distribution coverage	13.6	19.3	20.5	27.7	38.2	51.2
	Percentage of TB cases with known HIV status	72.2	88.7	90.4	93.1	95.0	95.4
11_NCDs	TB/HIV co-infected client on ART rate		31.4	53.2	59.7	82.8	79.9
	Diabetes mellitus incidence				2.7	2.6	2.5
	Hypertension incidence		16.8	10.3	17.0	14.3	18.3
12_Human Resources	Hypertension prevalence rate (crude)	22.4		23.6			21.4
	Percentage of fixed PHC facilities with staffing in line with WISN						0.0
	Percentage fixed PHC facilities with performance management agreement for all staff						15.3

Section B: National, Provincial and District Profiles

Provincial average values for all indicators: Mpumalanga Province

Category	Indicator	2010	2011	2012	2013	2014	2015
01_Finance	Provincial and Local Government expenditure on District Health Services per capita (total population)	1 218	1 267	1 304	1 337	1 407	1 456
	Provincial and Local Government expenditure on District Health Services per capita (uninsured)	1 406	1 462	1 505	1 543	1 624	1 681
	Provincial expenditure per PHC headcount	264	258	267	292	300	326
	Provincial PHC expenditure per capita (total population)	535	562	594	648	681	716
	Provincial PHC expenditure per capita (uninsured)	617	649	685	748	786	826
02_Management PHC	Percentage ideal clinics						16.0
	Percentage of fixed PHC facilities with patients that have access to a medical practitioner						6.6
03_Management Inpatients	Average length of stay (district hospitals)	4.3	4.2	4.1	4.3	4.3	4.5
	Expenditure per Patient Day Equivalent (district hospitals)	2 277	2 171	2 054	1 978	2 131	2 180
	Inpatient bed utilisation rate (district hospitals)	65.4	68.9	69.9	70.5	71.0	71.4
	Inpatient crude death rate		6.2	6.2	5.8	5.6	5.5
	OPD new client not referred rate (district hospitals)	68.9	72.4	67.6	65.2	67.0	66.0
04_Delivery	Delivery by Caesarean section rate (district hospitals)	15.8	17.2	17.6	18.1	17.9	19.3
	Delivery in facility under 18 years rate	10.1	9.5	8.9	9.1	9.1	8.6
	Inpatient early neonatal death rate	9.2	9.8	9.5	8.6	7.9	9.3
	Maternal mortality in facility ratio	161.1	135.0	175.8	149.1	115.4	125.3
	Mother postnatal visit within 6 days rate	4.8	51.9	61.6	53.9	59.7	62.6
	Stillbirth rate in facility	24.3	24.1	24.3	21.3	21.1	21.8
05_PMTCT	Antenatal 1st visits before 20 weeks rate	36.0	37.5	42.2	49.0	56.6	65.9
	Antenatal client initiated on ART rate	54.6	66.5	81.1	74.2	92.9	95.9
	HIV PCR birth testing coverage						2.3
	Percentage PCR tests positive within the first six days						1.1
06_Child Health	Child under 5 years diarrhoea case fatality rate	12.9	8.2	7.5	4.9	5.3	2.7
	Child under 5 years pneumonia case fatality rate	9.4	7.8	5.3	5.7	5.2	3.7
	Child under 5 years severe acute malnutrition case fatality rate	22.1	27.3	13.1	12.8	19.1	12.5
	Inpatient death under 5 years rate				7.8	8.3	7.1
	School Grade 1 screening coverage				14.9	12.4	13.3
	Vitamin A coverage 12 to 59 months	29.1	34.2	34.8	36.0	50.0	51.4
07_Immunisation	Immunisation coverage under 1 year	58.3	58.9	67.8	71.1	80.1	87.2
	Measles 2nd dose coverage	74.3	76.2	67.0	69.6	74.6	78.7
08_Reproductive health	Cervical cancer screening coverage	60.2	50.6	48.5	54.9	63.3	66.7
	Couple year protection rate	33.0	28.0	29.9	36.0	39.8	38.7
09_TB	TB incidence (all types)	715.5	613.6	512.7	477.1	461.5	401.6
	TB rifampicin resistance confirmed client rate		7.9	11.2	9.5	8.6	7.8
	TB cure rate (new pulmonary smear-positive)	42.1	69.9	76.8	73.3	79.8	
	TB loss to follow up rate (new pulmonary smear-positive)	5.9	5.9	5.4	5.4	3.8	
	TB MDR treatment success rate				45.2		
	TB successful treatment rate (all TB)	39.2	75.6	74.4	76.1	84.0	
	TB death rate (all TB)		8.6	8.3	7.5	6.6	
10_HIV	HIV testing coverage (including ANC)				27.8	30.0	32.4
	Male condom distribution coverage	20.2	17.8	19.6	29.2	34.3	33.0
	Percentage of TB cases with known HIV status	73.5	82.9	85.3	90.1	93.2	93.6
	TB/HIV co-infected client on ART rate		23.1	60.4	61.8	92.9	90.6
11_NCDs	Diabetes mellitus incidence				1.7	1.4	1.7
	Hypertension incidence		20.3	18.1	17.3	12.9	17.4
	Hypertension prevalence rate (crude)	19.9		25.3			22.6
12_Human Resources	Percentage of fixed PHC facilities with staffing in line with WISN						2.4
	Percentage fixed PHC facilities with performance management agreement for all staff						16.0

Provincial average values for all indicators: Northern Cape

Category	Indicator	2010	2011	2012	2013	2014	2015
01_Finance	Provincial and Local Government expenditure on District Health Services per capita (total population)	1 471	1 446	1 360	1 445	1 501	1 463
	Provincial and Local Government expenditure on District Health Services per capita (uninsured)	1 738	1 709	1 606	1 707	1 772	1 728
	Provincial expenditure per PHC headcount	267	300	292	322	337	359
	Provincial PHC expenditure per capita (total population)	817	880	863	949	952	907
	Provincial PHC expenditure per capita (uninsured)	965	1 039	1 020	1 121	1 124	1 072
02_Management PHC	Percentage ideal clinics						18.9
	Percentage of fixed PHC facilities with patients that have access to a medical practitioner						1.8
03_Management Inpatients	Average length of stay (district hospitals)	2.3	2.3	2.4	3.2	3.5	3.3
	Expenditure per Patient Day Equivalent (district hospitals)	1 934	2 253	2 185	2 121	2 278	2 209
	Inpatient bed utilisation rate (district hospitals)	62.1	58.6	62.5	64.8	62.4	61.4
	Inpatient crude death rate		4.3	5.3	5.5	5.0	5.1
	OPD new client not referred rate (district hospitals)	76.0	70.1	68.7	69.0	68.7	69.8
04_Delivery	Delivery by Caesarean section rate (district hospitals)	12.1	13.7	13.3	14.0	14.3	16.3
	Delivery in facility under 18 years rate	9.3	10.1	10.2	10.2	9.6	9.3
	Inpatient early neonatal death rate	12.0	13.0	11.7	12.8	14.6	14.3
	Maternal mortality in facility ratio	90.7	147.7	144.6	118.9	254.1	112.5
	Mother postnatal visit within 6 days rate	25.6	42.7	51.7	51.2	56.5	53.0
	Stillbirth rate in facility	27.3	25.0	25.3	26.1	25.5	24.3
05_PMTCT	Antenatal 1st visits before 20 weeks rate	51.0	52.9	52.9	55.5	57.6	62.4
	Antenatal client initiated on ART rate	51.0	55.3	83.1	80.3	89.8	92.2
	HIV PCR birth testing coverage						2.3
	Percentage PCR tests positive within the first six days						1.3
06_Child Health	Child under 5 years diarrhoea case fatality rate	3.6	3.8	2.1	3.2	3.4	1.8
	Child under 5 years pneumonia case fatality rate	4.1	2.8	4.4	2.9	2.9	1.3
	Child under 5 years severe acute malnutrition case fatality rate	13.0	10.9	8.4	11.8	10.9	8.3
	Inpatient death under 5 years rate				7.7	7.5	4.4
	School Grade 1 screening coverage				13.9	11.3	12.9
	Vitamin A coverage 12 to 59 months	26.2	31.9	34.7	38.7	45.3	47.0
07_Immunisation	Immunisation coverage under 1 year	85.8	88.5	86.6	84.9	85.4	83.3
	Measles 2nd dose coverage	82.5	83.1	77.2	75.7	77.1	76.9
08_Reproductive health	Cervical cancer screening coverage	37.9	30.7	30.1	31.6	30.0	34.8
	Couple year protection rate	36.0	30.9	31.6	32.8	44.9	38.3
09_TB	TB incidence (all types)	892.2	893.8	758.1	798.0	764.3	644.6
	TB rifampicin resistance confirmed client rate		6.6	5.5	5.6	5.0	5.3
	TB cure rate (new pulmonary smear-positive)	70.7	68.3	68.5	65.6	69.4	
	TB loss to follow up rate (new pulmonary smear-positive)	6.5	7.4	7.0	8.0	7.3	
	TB MDR treatment success rate				39.0		
	TB successful treatment rate (all TB)	73.5	72.3	74.1	71.8	71.2	
	TB death rate (all TB)		11.7	10.3	9.0	7.8	
10_HIV	HIV testing coverage (including ANC)				24.1	29.5	30.3
	Male condom distribution coverage	9.5	8.5	8.2	11.5	20.3	20.6
	Percentage of TB cases with known HIV status	73.4	78.8	78.8	77.3	88.7	93.2
	TB/HIV co-infected client on ART rate		34.7	63.5	73.9	90.1	86.6
11_NCDs	Diabetes mellitus incidence				3.9	3.9	1.4
	Hypertension incidence		22.3	19.5	18.7	17.7	16.0
	Hypertension prevalence rate (crude)	40.3		37.4			40.1
12_Human Resources	Percentage of fixed PHC facilities with staffing in line with WISN						0.6
	Percentage fixed PHC facilities with performance management agreement for all staff						18.3

Section B: National, Provincial and District Profiles

Provincial average values for all indicators: North West

Category	Indicator	2010	2011	2012	2013	2014	2015
01_Finance	Provincial and Local Government expenditure on District Health Services per capita (total population)	1 145	1 173	1 227	1 288	1 290	1 275
	Provincial and Local Government expenditure on District Health Services per capita (uninsured)	1 316	1 349	1 411	1 481	1 484	1 467
	Provincial expenditure per PHC headcount	321	333	355	376	371	383
	Provincial PHC expenditure per capita (total population)	749	752	789	840	849	854
	Provincial PHC expenditure per capita (uninsured)	861	864	908	967	977	983
02_Management PHC	Percentage ideal clinics						17.5
	Percentage of fixed PHC facilities with patients that have access to a medical practitioner						2.2
03_Management Inpatients	Average length of stay (district hospitals)	4.1	3.5	3.7	3.9	4.7	4.6
	Expenditure per Patient Day Equivalent (district hospitals)	2 167	2 348	2 424	2 480	2 416	2 604
	Inpatient bed utilisation rate (district hospitals)	60.6	59.8	60.2	61.4	64.2	64.0
	Inpatient crude death rate		5.6	6.5	6.4	6.6	6.5
	OPD new client not referred rate (district hospitals)	32.6	28.6	45.0	45.9	47.9	44.5
04_Delivery	Delivery by Caesarean section rate (district hospitals)	18.7	18.2	20.2	23.2	27.9	27.6
	Delivery in facility under 18 years rate	8.1	7.2	7.2	7.0	6.9	6.3
	Inpatient early neonatal death rate	12.8	11.2	10.4	9.5	10.8	9.8
	Maternal mortality in facility ratio	204.6	189.7	166.6	184.9	167.1	148.1
	Mother postnatal visit within 6 days rate	52.3	76.4	78.9	74.0	74.7	69.4
	Stillbirth rate in facility	25.2	24.6	23.5	23.5	22.8	22.5
05_PMTCT	Antenatal 1st visits before 20 weeks rate	39.6	42.3	44.1	50.6	54.3	60.7
	Antenatal client initiated on ART rate	68.1	72.8	74.7	79.2	90.2	86.9
	HIV PCR birth testing coverage						1.2
	Percentage PCR tests positive within the first six days						1.2
06_Child Health	Child under 5 years diarrhoea case fatality rate	5.6	4.9	5.8	4.8	3.4	4.0
	Child under 5 years pneumonia case fatality rate	7.0	5.0	5.1	4.8	3.6	3.1
	Child under 5 years severe acute malnutrition case fatality rate	14.6	11.1	11.2	11.6	12.3	12.3
	Inpatient death under 5 years rate				6.6	7.7	6.2
	School Grade 1 screening coverage				20.2	38.2	53.0
	Vitamin A coverage 12 to 59 months	27.0	34.0	32.2	39.3	52.2	52.4
07_Immunisation	Immunisation coverage under 1 year	66.5	68.2	72.4	74.2	82.1	83.2
	Measles 2nd dose coverage	73.7	74.1	62.9	66.3	77.7	76.0
08_Reproductive health	Cervical cancer screening coverage	48.4	46.8	46.5	59.6	65.8	66.1
	Couple year protection rate	26.3	21.3	28.0	32.9	42.7	35.1
09_TB	TB incidence (all types)	894.4	816.6	705.0	658.1	630.7	528.4
	TB rifampicin resistance confirmed client rate		8.0	7.1	5.4	5.2	4.8
	TB cure rate (new pulmonary smear-positive)	66.4	68.9	66.0	69.0	76.4	
	TB loss to follow up rate (new pulmonary smear-positive)	8.8	7.7	7.5	7.1	5.7	
	TB MDR treatment success rate				60.2		
	TB successful treatment rate (all TB)	67.2	67.8	66.4	65.8	70.2	
10_HIV	TB death rate (all TB)		11.2	11.8	10.2	10.1	
	HIV testing coverage (including ANC)				33.4	35.2	29.7
	Male condom distribution coverage	8.3	6.9	17.0	22.3	28.1	23.8
	Percentage of TB cases with known HIV status	65.0	76.8	83.1	89.5	92.2	93.7
	TB/HIV co-infected client on ART rate		29.4	63.2	69.1	81.1	82.3
11_NCDs	Diabetes mellitus incidence				1.2	1.0	1.6
	Hypertension incidence		17.6	15.2	16.8	13.9	16.0
	Hypertension prevalence rate (crude)	27.5		35.7			30.8
12_Human Resources	Percentage of fixed PHC facilities with staffing in line with WISN						1.3
	Percentage fixed PHC facilities with performance management agreement for all staff						11.8

Provincial average values for all indicators: Western Cape

Category	Indicator	2010	2011	2012	2013	2014	2015
01_Finance	Provincial and Local Government expenditure on District Health Services per capita (total population)	1 091	1 126	1 146	1 160	1 241	1 266
	Provincial and Local Government expenditure on District Health Services per capita (uninsured)	1 476	1 523	1 551	1 570	1 679	1 713
	Provincial expenditure per PHC headcount	248	265	275	295	324	343
	Provincial PHC expenditure per capita (total population)	684	711	692	702	753	777
	Provincial PHC expenditure per capita (uninsured)	926	962	937	949	1 019	1 051
02_Management PHC	Percentage ideal clinics						-
	Percentage of fixed PHC facilities with patients that have access to a medical practitioner						-
03_Management Inpatients	Average length of stay (district hospitals)	3.0	3.1	3.2	3.7	3.8	3.3
	Expenditure per Patient Day Equivalent (district hospitals)	2 053	1 881	1 940	1 956	2 021	2 060
	Inpatient bed utilisation rate (district hospitals)	77.3	84.7	87.6	88.7	89.3	87.5
	Inpatient crude death rate		2.8	3.7	3.1	3.1	2.9
	OPD new client not referred rate (district hospitals)				40.2	29.5	21.2
04_Delivery	Delivery by Caesarean section rate (district hospitals)	23.3	23.7	24.1	25.6	27.7	28.1
	Delivery in facility under 18 years rate	6.8	6.7	6.5	6.3	6.1	5.5
	Inpatient early neonatal death rate	4.9	5.1	6.2	4.8	5.3	7.3
	Maternal mortality in facility ratio		28.6	8.7	68.6	54.4	69.6
	Mother postnatal visit within 6 days rate				82.8	100.5	67.8
	Stillbirth rate in facility	20.8	19.1	17.6	17.4	17.2	17.5
05_PMTCT	Antenatal 1st visits before 20 weeks rate	52.7	56.2	58.2	61.0	65.8	67.7
	Antenatal client initiated on ART rate	98.5	97.0	94.2	68.5	82.8	77.5
	HIV PCR birth testing coverage						4.4
	Percentage PCR tests positive within the first six days						2.4
06_Child Health	Child under 5 years diarrhoea case fatality rate	0.3	0.2	0.1	0.2	0.2	0.1
	Child under 5 years pneumonia case fatality rate	0.7	0.5		0.4	0.4	0.3
	Child under 5 years severe acute malnutrition case fatality rate	1.8	3.9		2.2	1.8	0.9
	Inpatient death under 5 years rate				1.4	1.6	1.3
	School Grade 1 screening coverage				0.0	36.6	52.1
	Vitamin A coverage 12 to 59 months	32.3	36.3	37.8	44.4	47.4	47.3
07_Immunisation	Immunisation coverage under 1 year	85.0	86.2	88.8	84.9	90.9	89.3
	Measles 2nd dose coverage	78.7	77.0	70.1	71.2	76.3	86.2
08_Reproductive health	Cervical cancer screening coverage	65.8	57.5	54.5	57.2	56.8	54.0
	Couple year protection rate	58.8	51.6	57.7	63.6	60.0	58.6
09_TB	TB incidence (all types)	909.5	827.4	776.5	742.9	709.9	681.4
	TB rifampicin resistance confirmed client rate		4.7	5.1	5.0	5.2	5.0
	TB cure rate (new pulmonary smear-positive)	81.3	81.4	81.3	80.4	78.7	
	TB loss to follow up rate (new pulmonary smear-positive)	6.8	6.9	7.9	8.3	8.8	
	TB MDR treatment success rate				43.5		
	TB successful treatment rate (all TB)	81.6	81.5	81.5	82.6	81.8	
	TB death rate (all TB)		4.2	4.3	3.8	3.6	
10_HIV	HIV testing coverage (including ANC)				9.1	31.9	35.3
	Male condom distribution coverage	45.8	43.9	53.8	58.6	55.3	49.9
	Percentage of TB cases with known HIV status	89.8	91.7	94.5	95.6	96.6	96.1
	TB/HIV co-infected client on ART rate		42.6	69.8	77.8	84.9	75.7
11_NCDs	Diabetes mellitus incidence				1.3	1.1	1.0
	Hypertension incidence		17.7	11.8	9.1	7.4	6.9
	Hypertension prevalence rate (crude)	42.3		39.9			35.6
12_Human Resources	Percentage of fixed PHC facilities with staffing in line with WISN						-
	Percentage fixed PHC facilities with performance management agreement for all staff						-

Table 4: South African average values for all indicators, 2010/11–2015/16

Category	Indicator	2010	2011	2012	2013	2014	2015
01_Finance	Provincial and Local Government expenditure on District Health Services per capita (total population)	1 416	1 467	1 536	1 540	1 618	1 639
	Provincial and Local Government expenditure on District Health Services per capita (uninsured)	1 162	1 203	1 259	1 261	1 324	1 341
	Provincial expenditure per PHC headcount	806	844	905	912	962	993
	Provincial PHC expenditure per capita (total population)	281	281	301	307	327	349
	Provincial PHC expenditure per capita (uninsured)	661	692	741	747	788	812
02_Management PHC	Percentage ideal clinics						18.1
	Percentage of fixed PHC facilities with patients that have access to a medical practitioner						9.2
03_Management Inpatients	Average length of stay (district hospitals)	4.3	4.3	4.2	4.7	4.6	4.5
	Expenditure per Patient Day Equivalent (district hospitals)		5.1	5.8	5.4	5.2	5.0
	Inpatient bed utilisation rate (district hospitals)	2 023	2 044	2 137	2 185	2 269	2 342
	Inpatient crude death rate	65.6	64.6	64.1	61.5	60.7	58.3
	OPD new client not referred rate (district hospitals)	64.7	67.2	67.3	66.3	65.8	65.3
04_Delivery	Delivery by Caesarean section rate (district hospitals)	18.5	19.9	20.8	21.8	22.7	24.1
	Delivery in facility under 18 years rate	8.0	8.1	7.7	7.8	7.4	7.1
	Inpatient early neonatal death rate	10.0	10.2	10.2	10.1	10.1	10.5
	Maternal mortality in facility ratio	138.5	144.9	132.9	133.3	132.5	119.1
	Mother postnatal visit within 6 days rate	26.3	56.4	65.2	73.0	74.3	68.5
	Stillbirth rate in facility	22.7	22.5	21.8	21.5	20.7	21.1
05_PMTCT	Antenatal 1st visits before 20 weeks rate	37.6	40.2	44.0	50.0	53.9	61.2
	Antenatal client initiated on ART rate	86.7	80.4	81.6	76.3	91.2	93.0
	HIV PCR birth testing coverage						1.1
	Percentage PCR tests positive within the first six days						1.2
06_Child Health	Child under 5 years diarrhoea case fatality rate	7.0	4.6	4.3	3.9	3.3	2.2
	Child under 5 years pneumonia case fatality rate	5.8	4.2	3.8	3.5	2.9	2.3
	Child under 5 years severe acute malnutrition case fatality rate	16.4	13.3	12.7	11.3	11.6	8.9
	Inpatient death under 5 years rate				5.5	5.7	4.7
	School Grade 1 screening coverage				17.2	23.2	28.9
	Vitamin A coverage 12 to 59 months	34.6	41.6	40.5	44.3	52.2	57.0
07_Immunisation	Immunisation coverage under 1 year	80.8	83.9	83.6	84.4	89.8	89.2
	Measles 2nd dose coverage	81.3	85.4	74.9	75.0	82.8	84.8
08_Reproductive health	Cervical cancer screening coverage	52.2	50.2	50.3	54.1	54.5	56.6
	Couple year protection rate	31.6	28.7	32.7	37.3	46.8	48.2
09_TB	TB incidence (all types)		7.1	7.1	6.6	6.4	6.1
	TB rifampicin resistance confirmed client rate	718.4	762.3	689.3	648.9	592.7	519.8
	TB cure rate (new pulmonary smear-positive)	6.8	6.1	6.2	5.8	5.6	
	TB loss to follow up rate (new pulmonary smear-positive)	69.2	74.2	75.8	76.8	77.4	
	TB MDR treatment success rate		8.6	8.4	7.4	6.7	
	TB successful treatment rate (all TB)	70.8	75.4	76.1	77.9	77.2	
	TB death rate (all TB)				47.2		
10_HIV	HIV testing coverage (including ANC)				26.1	32.1	34.5
	Male condom distribution coverage	14.8	15.7	21.8	27.9	38.4	44.4
	Percentage of TB cases with known HIV status	73.5	82.7	86.9	90.3	93.9	94.8
	TB/HIV co-infected client on ART rate		28.0	60.6	72.0	85.8	84.5
11_NCDs	Diabetes mellitus incidence				2.0	1.4	1.7
	Hypertension incidence		22.3	16.9	16.6	13.9	16.8
	Hypertension prevalence rate (crude)	30.0		32.1			28.2
12_Human Resources	Percentage of fixed PHC facilities with staffing in line with WISN						1.5
	Percentage fixed PHC facilities with performance management agreement for all staff						16.3

Map 1: Provinces, districts and sub-districts



