

Northern Cape Province

The Northern Cape Province, with a population of just over one million people, has the smallest and least dense (3 people/km²) population in the country. Access to piped water was high at 94.4% in 2007. There are huge differences between districts and some interesting extremes; for example Namakwa has the lowest deprivation and highest medical scheme coverage, but also the highest per capita expenditure, highest cost per PDE (which may indicate inefficiencies), highest Caesarean section rate, low supervision rate, but lowest HIV prevalence and STI incidence.

In 2008/09 the province had the second highest PHC expenditure per capita (R907)⁷² as well as the third highest non-hospital per capita expenditure on PHC in the country at R399 per person. This reflects an increase of over 100% from the 2001/02 amount of R198. There were wide inter-district variations in the province with Namakwa having the highest total PHC expenditure per capita (R1394) as well as the highest non-hospital per capita expenditure on PHC (R736) amongst the districts in that year.

The Northern Cape has 18 district hospitals with 728 usable beds. The percentage of district health expenditure on these hospitals has decreased from 46.5% in 2007/08 to 41.3% in 2008/09, which is slightly below the national average of 41.8%. It ranges from 18.3% in Frances Baard to 63.2% in Siyanda. The cost per patient day equivalent (PDE) in district hospitals in this province was the third highest at R1232 in 2008/09, above the national average of R1096. This cost has decreased significantly from the R1505 recorded in 2007/08. The province's bed utilisation rate, 67.2% in 2008/09, reflects a slight increase from the previous year. Again the values of the districts vary widely (42.6% in Frances Baard to 79.6% in Siyanda). The average length of stay (ALOS) in a district hospital was 2.1 days in 2008/09, well below the national average of 4.3 days. It should be noted that four of the five districts fall within the top five rankings for this indicator. With such a short stay in hospital, one would expect the cost per PDE to decrease over the next few years if this ALOS trend continues.

The non-hospital cost per patient visit to a primary health care facility was R109 in 2008/09, the lowest in the country, and varied from a high of R154 in Namakwa to a low of R70 in Siyanda. The PHC facility utilisation rate in the Northern Cape was 3.2 visits per person per year in 2008/09, above the national average of 2.4. All five districts are ranked above the national average and range from 2.8 visits in John Taolo Gaetsewe (Kgalagadi) to 4.1 visits in Pixley ka Seme. The average clinic supervision rate improved very slightly from 20.9% in 2007/08 to 23.2% in 2008/09. This remains the lowest in the country and well below the national average of 61.4%. All of the districts, with the exception of John Taolo Gaetsewe (Kgalagadi), fall within the five worst-ranking positions in the country. Supervision is an essential part of ensuring quality of care and the Northern Cape risks compromising the quality of care with such poor basic supervision of services.

The province continued to perform erratically in the management of priority diseases, compared to the rest of the country. The TB cure rate at 62.8% in 2007 has fluctuated over the last four years. It is difficult to tell whether this is due to poor data quality or poor management of the programme. The smear conversion rate has improved steadily from 31.8% in 2003/04 to 55.5% in 2008, although it remains below the South African average of 62.5%. This positive upward trend should be maintained and, in fact, extended so as to consistently improve the cure rate as well.

In 2008 the Northern Cape had the second lowest HIV/AIDS prevalence rate in the country at 16.2%, as measured by the National HIV and Syphilis Prevalence Survey South Africa, 2008. The province reflects that 96.1% of antenatal clients were tested in 2008/09, an improvement of 7.6 percentage points from the previous year.

HIV positive antenatal clients (not on HAART) CD4 tested for the first time during current pregnancy (Antenatal client CD4 1st test rate) was measured for the first time in this reporting period. Northern Cape appears to reflect poor data quality in that the range varies from zero percent in Namakwa to 92.2% in Siyanda. The data for the proportion of infants born to known HIV positive women who were PCR tested for HIV six weeks after birth (Baby PCR test around 6 weeks uptake) are equally poor in that only Frances Baard recorded a realistic value at 26.8%. The PMTCT managers in the districts will have to pay special attention to the collection of accurate data and the monitoring of these indicators in the next year in order to allow better analysis of the data in the future.

The Northern Cape distributed an average of 6.5 condoms per man in 2008/09, which is well below both the target of 11 condoms per man and the national average of 12.3 condoms per man per year. This has

⁷² Figures are in REAL prices that have been adjusted for the effects of inflation to 2008/09 prices.

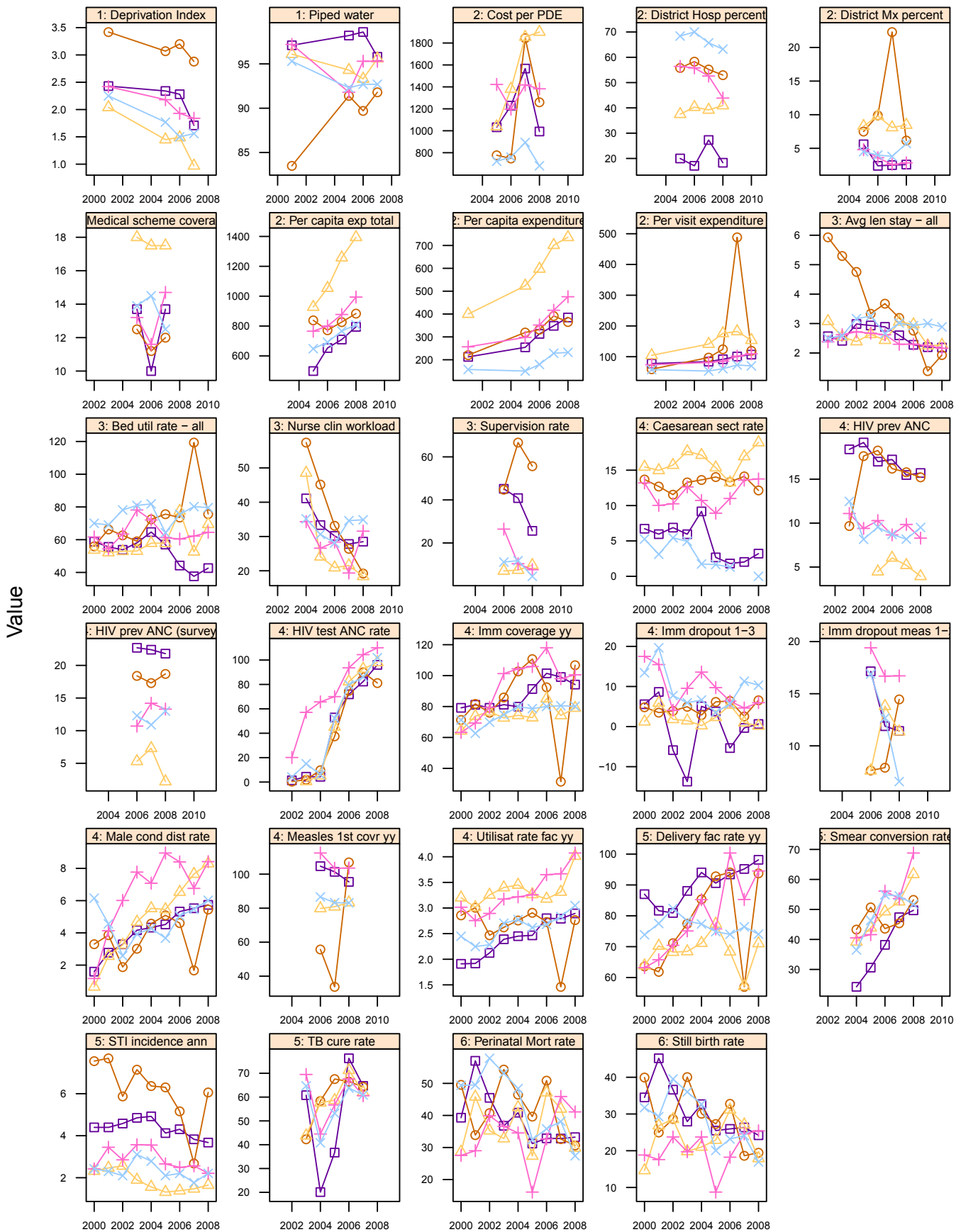
probably impacted on the incidence of STIs which although still below the national average of 4.6%, has crept up to 3.3% in 2008/09 from the 2007/08 figure of 2.8%.

The Caesarean section rate at 9.7% in 2008/09 was the lowest in the country. The delivery rate in facility of 89.2% has increased from the previous rate of 80.4% in 2007/08. Amongst the districts this ranges from 71.1% in Namakwa to 98.2% in Frances Baard.

According to the data, 93.2% of all the children under one year of age resident in the Northern Cape in 2008/09 were immunised. This ranges from 79.1% in Namakwa to 106.8% in John Taolo Gaetsewe (Kgalagadi). The drop-out rate from DTP1 to DTP3 in the Northern Cape was the second highest in the country at 4.6%, ranging from a high of 10.3% in Siyanda to 0.2% in Namakwa.

The stillbirth rate (21.7 per 1000 births) is the second lowest in the country and an improvement on 24.8 per 1000 births in 2007/08. The perinatal mortality rate (32.7 per 1000 births) has also improved from the 2007/08 figure of 36.8, but remains above the national average of 31.4 per 1000 births. The Northern Cape should be encouraged to continue with these positive trends. The high stillbirth rate (25.4 per 1000 births) and perinatal mortality rate in Pixley ka Seme (41.1 per 1000 births), should be monitored closely and interventions put in place to address the cause of the problem, although it is acknowledged that with the small numbers in sparsely populated areas there is wide variability for these indicators and it is difficult to discern the direction of trends.

Annual indicators for districts in Northern Cape (NC)



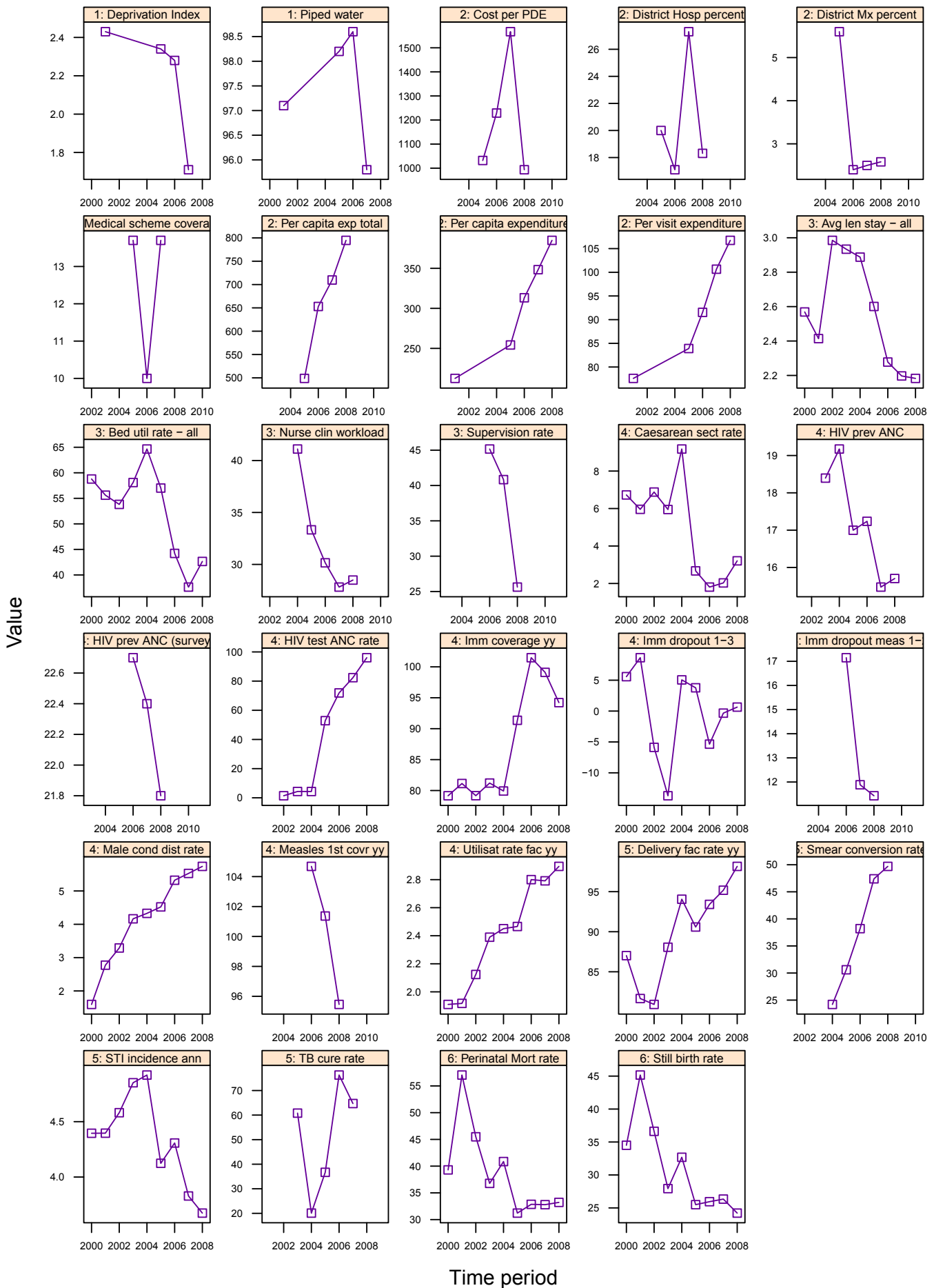
Districts			
Frances Baard: DC9	□	Namakwa: DC6	△
John Taolo Gaetsewe: DC45	○	Pixley ka Seme: DC7	+
		Siyanda: DC8	×

Annual indicators for Northern Cape Province

NC	Northern Cape	Year								District Rank (1=best)	National value
		2001/02	2002/03	2003/04	2004/05	2005/06	2006/07	2007/08	2008/09		
Demographic and socio-economic	Population total					1 087 431	1 097 847	1 102 272	1 108 599		48 272 353
	Population Density					-	-	-	3		40
	Medical aid coverage (%)					13.9	12.0	13.8	-	-	14.3
	Access to piped water (%) - (2005-06 GHS, 2007 Comm. Survey)					95.3	94.9	94.4	-	-	88.7
	Deprivation index - (high value = most deprived)	-	-	-	-	-	-	-	-	-	-
	Socio-economic quintile - (1=poor, 5=best)	-	-	-	-	-	-	-	-	-	-
Input	Total PHC expenditure per capita - (real 2008/09 prices)	-	-	-	-	680	748	826	907	-	794
	Non-hospital PHC expenditure per capita - (real 2008/09 prices)	198	-	-	-	279	323	377	399	-	367
	% District health services expenditure on District Management	-	-	-	-	6.0	5.4	7.2	4.8		5.6
	% District health services expenditure on District Hospitals	-	-	-	-	47.0	45.9	46.5	41.3		41.8
	PHC (Non-Hospital) Expenditure per Patient Visit - (real 2008/09 prices)	62	-	-	-	87	98	124	109	-	128
	Cost per PDE - (real 2008/09 prices)	-	-	-	-	1 010	962	1 505	1 232		1096
Process	Nurse clinical workload	-	-	-	40.9	31.4	28.5	25.4	26.2	-	23.3
	Average length of stay (ALOS)	-	-	3.0	2.9	2.8	2.6	2.0	2.1	-	4.3
	Bed utilisation rate (BUR)	-	-	64.4	70.2	65.0	65.5	66.0	67.2	-	66.9
	Clinic supervision rate	-	-	-	-	-	29.8	20.9	23.2	-	61.4
Output	Male condom distribution rate	-	-	4.6	4.9	5.3	5.8	5.4	6.5	-	12.3
	Immunisation coverage < 1 year	-	-	83.2	87.5	92.9	96.2	82.6	93.2	-	89.5
	Immunisation drop-out rate (DTP1-3)	-	-	-0.6	6.1	5.2	1.8	3.6	4.6	-	2.7
	Measles Coverage						90.7	85.9	95.2	-	91.8
	Measles drop-out rate						15.7	12.9	12.0	-	16.3
	Caesarean section rate	-	-	11.0	10.7	9.1	8.8	8.8	9.7	-	16.1
	Proportion ANC clients tested for HIV	-	-	19.2	17.3	51.8	77.9	88.5	96.1	-	86.7
	HIV prevalence among ANC clients tested (DHIS)	-	-	11.9	10.7	13.6	13.0	11.9	12.1	-	24.3
	HIV prevalence among ANC clients tested (survey)	-	-	-	-	-	15.6 (12.7-18.5)	16.5 (13.9-19.6)	16.2 (13.7-18.9)	-	29.3
	Baby PCR test around 6 weeks uptake								17.5		
	Antenatal client CD4 1st test rate								30.0		
	Utilisation rate	-	-	2.7	2.8	2.8	2.9	2.9	3.2	-	2.4
Outcome	Incidence of STI treated - new	-	-	4.4	4.1	3.6	3.4	2.8	3.3	-	4.6
	TB cure rate (2003 - 2007)	-	-	64.6	38.3	50.1	69.1	62.8		-	64.0
	TB smear conversion rate (2004 - 2008)	-	-		31.8	40.5	48.4	50.7	55.5	-	62.5
	TB case load (new Sm+)	-	-	-	-	-	-	3 749	4 088		138 803
	Delivery rate in facility	-	-	80.0	85.4	84.3	88.2	80.4	89.2	-	86.6
Impact	Stillbirth rate	-	-	29.7	29.9	22.3	25.9	24.8	21.7	-	22.3
	Perinatal mortality rate in facility	-	-	42.9	42.5	30.8	37.8	36.8	32.7	-	31.4

Number of health facilities and beds	Clinic	CHCs	Mobile Service	District Hospital	Regional Hospital	Provincial Tertiary Hospital	Central Hospital	Specialised Hospital	Private hospitals	Beds
Number of public sector facilities (2009) and beds (2009)	126	24	32	18	2	0	0	3		1 922
Number of private sector facilities and beds (2008)									4	335

Annual indicators for district: Frances Baard – DC9

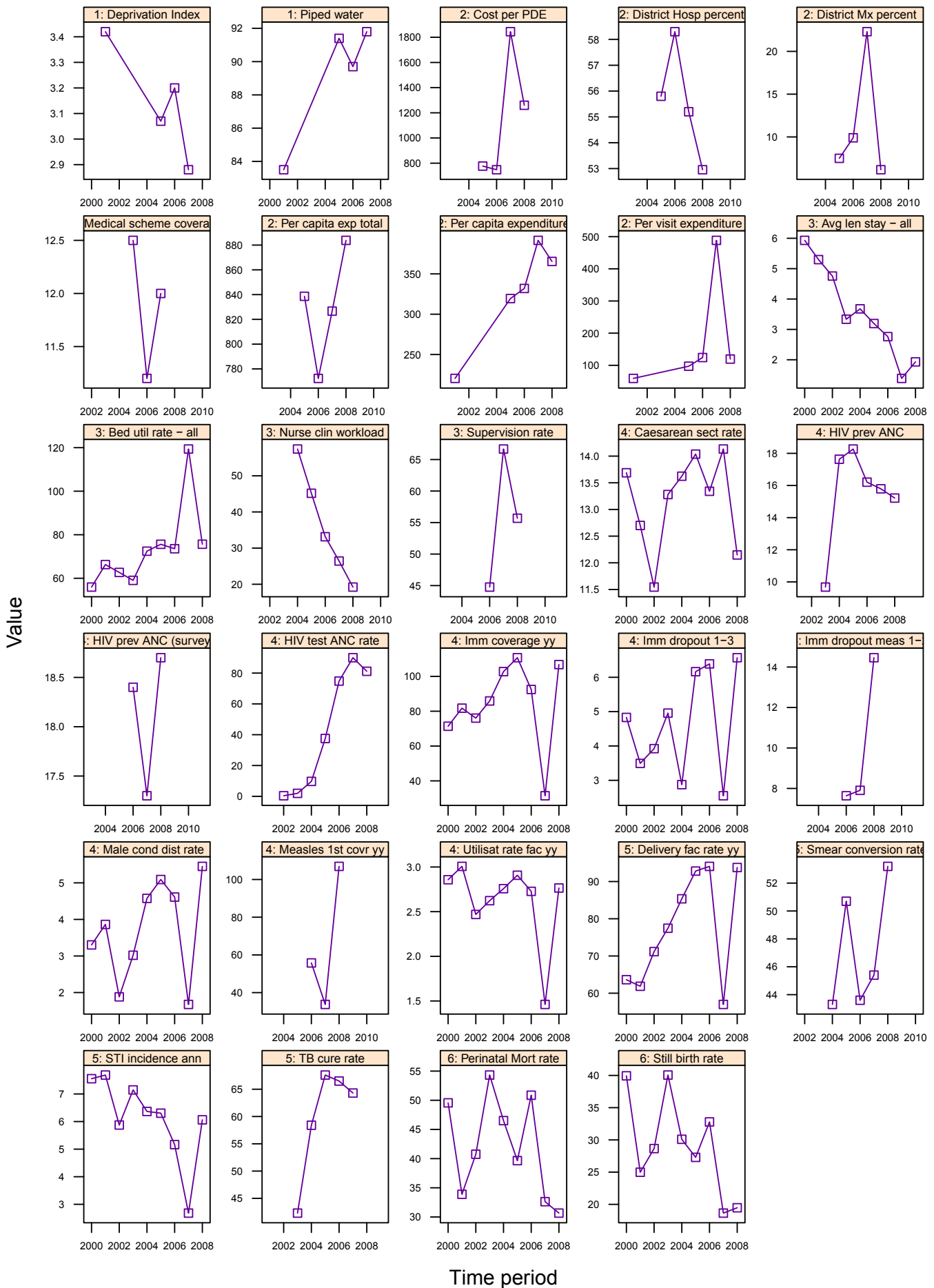


Annual indicators for Frances Baard District

DC9	Frances Baard District Municipality	Year								District Rank (1=best)	National value
		2001/02	2002/03	2003/04	2004/05	2005/06	2006/07	2007/08	2008/09		
Demographic and socio-economic	Population total					365 518	368 546	370 026	372 033		48 272 353
	Population Density					-	-	-	28		40
	Medical aid coverage (%)					13.7	10.0	13.7	-	25	14.3
	Access to piped water (%) - (2005-06 GHS, 2007 Comm. Survey)					98.2	98.6	95.8	-	18	88.7
	Deprivation index - (high value = most deprived)	2.43	-	-	-	2.34	2.28	1.71	-	13	-
	Socio-economic quintile - (1=poor, 5=best)	-	-	-	-	3	3	4	-	-	-
Input	Total PHC expenditure per capita - (real 2008/09 prices)	-	-	-	-	499	653	710	795	33	794
	Non-hospital PHC expenditure per capita - (real 2008/09 prices)	213	-	-	-	254	313	348	385	13	367
	% District health services expenditure on District Management	-	-	-	-	5.6	2.4	2.5	2.6		5.6
	% District health services expenditure on District Hospitals	-	-	-	-	20.0	17.1	27.3	18.3		41.8
	PHC (Non-Hospital) Expenditure per Patient Visit - (real 2008/09 prices)	78	-	-	-	84	92	101	107	42	128
	Cost per PDE - (real 2008/09 prices)	-	-	-	-	1 032	1 229	1 567	993		1096
Process	Nurse clinical workload	-	-	-	41.1	33.3	30.2	27.8	28.5	16	23.3
	Average length of stay (ALOS)	-	-	2.9	2.9	2.6	2.3	2.2	2.2	3	4.3
	Bed utilisation rate (BUR)	-	-	58.1	64.7	57.0	44.2	37.6	42.6	51	66.9
	Clinic supervision rate	-	-	-	-	-	45.2	40.8	25.6	49	61.4
Output	Male condom distribution rate	-	-	4.2	4.3	4.5	5.3	5.5	5.7	49	12.3
	Immunisation coverage < 1 year	-	-	81.2	79.9	91.4	101.5	99.1	94.2	19	89.5
	Immunisation drop-out rate (DTP1-3)	-	-	-13.7	5.0	3.8	-5.4	-0.3	0.6	16	2.7
	Measles Coverage						104.7	101.4	95.5	35	91.8
	Measles drop-out rate						17.1	11.9	11.4	17	16.3
	Caesarean section rate	-	-	5.9	9.2	2.7	1.8	2.0	3.2		16.1
	Proportion ANC clients tested for HIV	-	-	4.3	4.3	52.9	71.9	82.4	96.1	21	86.7
	HIV prevalence among ANC clients tested (DHIS)	-	-	18.4	19.2	17.0	17.2	15.5	15.7	11	24.3
	HIV prevalence among ANC clients tested (survey)	-	-	-	-	-	22.7 (18.7-26.7)	22.4 (18.3-27)	21.8 (18.2-26)	13	29.3
	Baby PCR test around 6 weeks uptake								26.8		
	Antenatal client CD4 1st test rate								20.9		
	Utilisation rate	-	-	2.4	2.5	2.5	2.8	2.8	2.9	16	2.4
Outcome	Incidence of STI treated - new	-	-	4.9	4.9	4.1	4.3	3.8	3.7	21	4.6
	TB cure rate (2003 - 2007)	-	-	60.8	20.1	36.7	76.3	64.7		28	64.0
	TB smear conversion rate (2004 - 2008)	-	-		24.2	30.6	38.2	47.4	49.7	45	62.5
	TB case load (new Sm+)	-	-	-	-	-	-	1 224	1 134		138 803
	Delivery rate in facility	-	-	88.1	94.1	90.6	93.4	95.2	98.2	9	86.6
Impact	Stillbirth rate	-	-	27.9	32.7	25.5	25.9	26.3	24.2	38	22.3
	Perinatal mortality rate in facility	-	-	36.8	40.9	31.2	32.9	32.8	33.2	34	31.4

Number of health facilities and beds	Clinic	CHCs	Mobile Service	District Hospital	Regional Hospital	Provincial Tertiary Hospital	Central Hospital	Specialised Hospital	Private hospitals	Beds
Number of public sector facilities (2009) and beds (2009)	28	2	4	4	1	0	0	2		909
Number of private sector facilities and beds (2008)									1	234

Annual indicators for district: John Taolo Gaetsewe – DC45

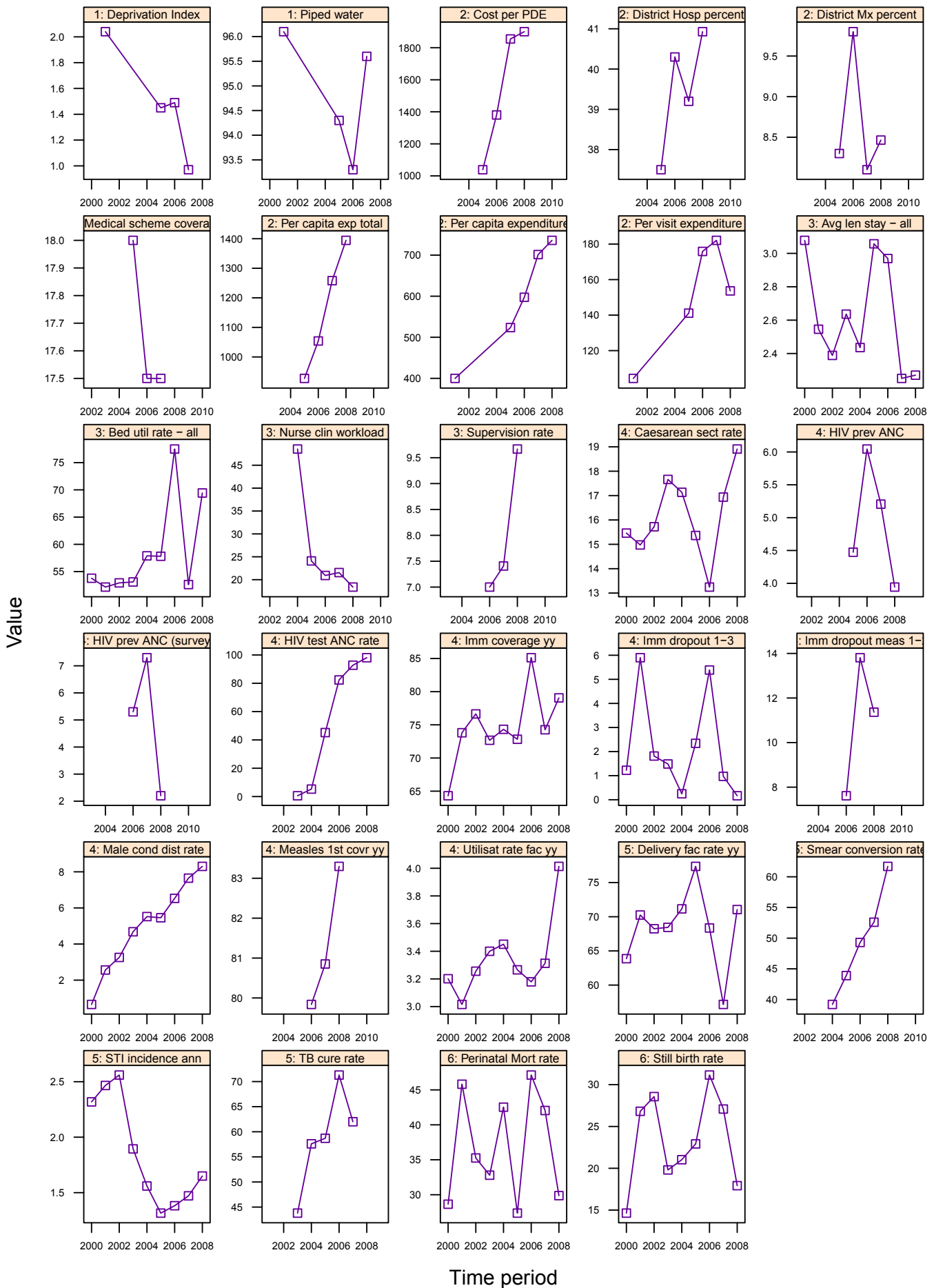


Annual indicators for John Taolo Gaetsewe (Kgalagadi) District

DC45	Kgalagadi District Municipality	Year								District Rank (1=best)	National value
		2001/02	2002/03	2003/04	2004/05	2005/06	2006/07	2007/08	2008/09		
Demographic and socio-economic	Population total					196 004	197 609	197 337	197 627		48 272 353
	Population Density					-	-	-	7		40
	Medical aid coverage (%)					12.5	11.2	12.0	-	28	14.3
	Access to piped water (%) - (2005-06 GHS, 2007 Comm. Survey)					91.4	89.7	91.8	-	27	88.7
	Deprivation index - (high value = most deprived)	3.42	-	-	-	3.07	3.20	2.88	-	31	-
	Socio-economic quintile - (1=poor, 5=best)	-	-	-	-	3	3	3	-	-	-
Input	Total PHC expenditure per capita - (real 2008/09 prices)	-	-	-	-	839	772	827	884	24	794
	Non-hospital PHC expenditure per capita - (real 2008/09 prices)	220	-	-	-	319	332	392	365	38	367
	% District health services expenditure on District Management	-	-	-	-	7.5	9.9	22.3	6.2		5.6
	% District health services expenditure on District Hospitals	-	-	-	-	55.8	58.3	55.2	53.0		41.8
	PHC (Non-Hospital) Expenditure per Patient Visit - (real 2008/09 prices)	59	-	-	-	97	124	489	119	29	128
	Cost per PDE - (real 2008/09 prices)	-	-	-	-	777	748	1 844	1 260		1096
Process	Nurse clinical workload	-	-	-	57.4	45.2	33.1	26.4	19.2	38	23.3
	Average length of stay (ALOS)	-	-	3.3	3.7	3.2	2.8	1.4	1.9	1	4.3
	Bed utilisation rate (BUR)	-	-	59.0	72.4	75.6	73.6	119.4	75.6	8	66.9
	Clinic supervision rate	-	-	-	-	-	44.8	66.7	55.7	32	61.4
Output	Male condom distribution rate	-	-	3.0	4.6	5.1	4.6	1.7	5.5	50	12.3
	Immunisation coverage < 1 year	-	-	85.9	102.7	110.7	92.5	31.5	106.8	7	89.5
	Immunisation drop-out rate (DTP1-3)	-	-	5.0	2.9	6.2	6.4	2.6	6.6	45	2.7
	Measles Coverage						55.7	33.7	107.0	47	91.8
	Measles drop-out rate						7.6	7.9	14.5	28	16.3
	Caesarean section rate	-	-	13.3	13.6	14.0	13.3	14.1	12.1		16.1
	Proportion ANC clients tested for HIV	-	-	1.9	9.7	37.5	74.8	90.0	81.2	44	86.7
	HIV prevalence among ANC clients tested (DHIS)	-	-	9.7	17.6	18.3	16.2	15.8	15.2	10	24.3
	HIV prevalence among ANC clients tested (survey)	-	-	-	-	-	18.4 (7.5-29.2)	17.3 (11.9-24.5)	18.7 (14.5-23.8)	11	29.3
	Baby PCR test around 6 weeks uptake								9.9		
	Antenatal client CD4 1st test rate								28.7		
	Outcome	Utilisation rate	-	-	2.6	2.8	2.9	2.7	1.5	2.8	19
Incidence of STI treated - new		-	-	7.1	6.4	6.3	5.2	2.7	6.1	41	4.6
TB cure rate (2003 - 2007)		-	-	42.3	58.4	67.6	66.5	64.3		29	64.0
TB smear conversion rate (2004 - 2008)		-	-		43.3	50.7	43.6	45.4	53.2	37	62.5
TB case load (new Sm+)		-	-	-	-	-	-	581	713		138 803
Impact	Delivery rate in facility	-	-	77.5	85.4	92.8	94.1	57.0	93.8	13	86.6
	Stillbirth rate	-	-	40.1	30.1	27.3	32.8	18.6	19.5	16	22.3
	Perinatal mortality rate in facility	-	-	54.3	46.5	39.7	50.9	32.6	30.7	25	31.4

Number of health facilities and beds	Clinic	CHCs	Mobile Service	District Hospital	Regional Hospital	Provincial Tertiary Hospital	Central Hospital	Specialised Hospital	Private hospitals	Beds
Number of public sector facilities (2009) and beds (2009)	36	1	6	2	0	0	0	0		278
Number of private sector facilities and beds (2008)									1	25

Annual indicators for district: Namakwa – DC6

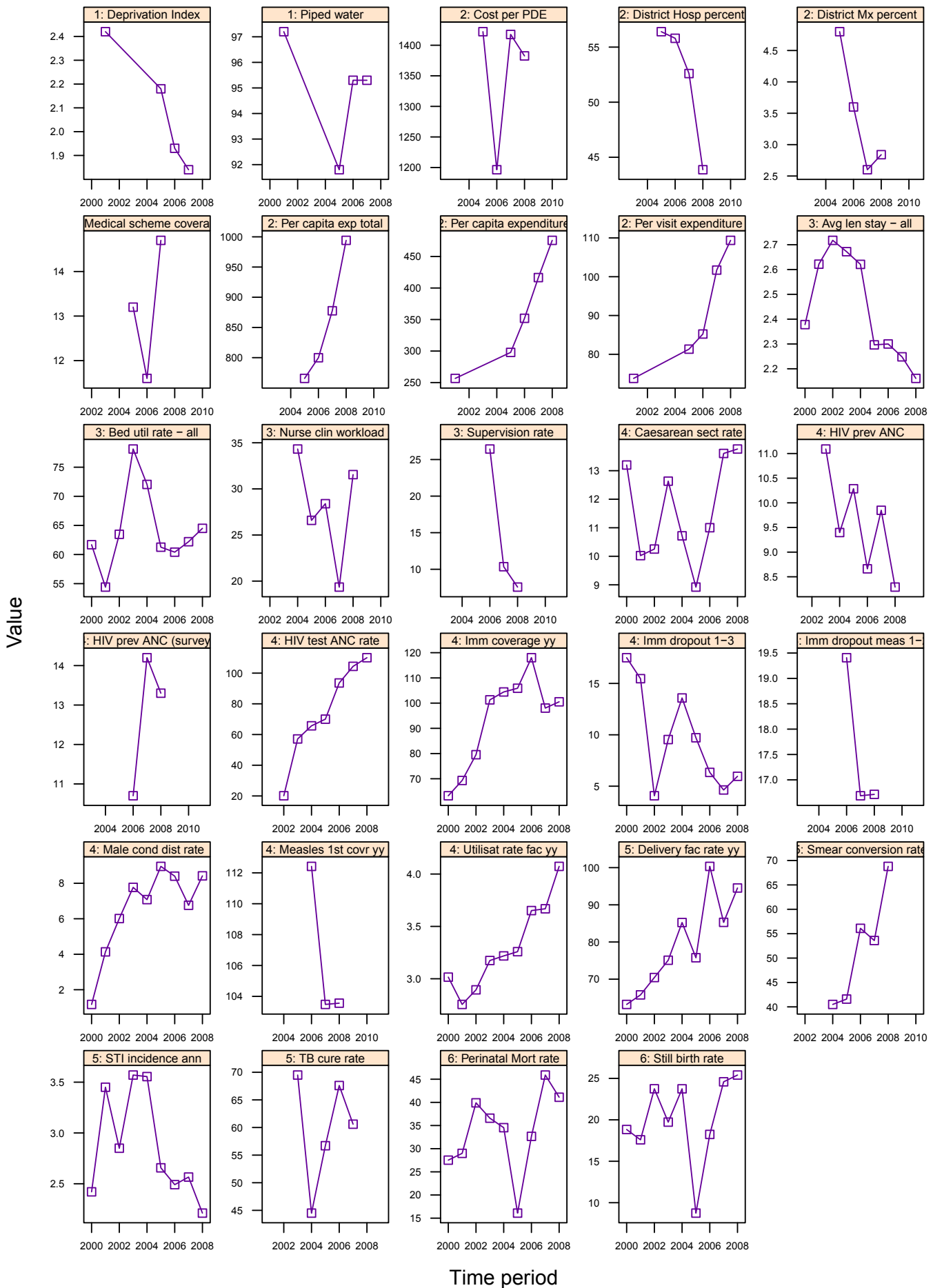


Annual indicators for Namakwa District

DC6	Namakwa District Municipality	Year								District Rank (1=best)	National value
		2001/02	2002/03	2003/04	2004/05	2005/06	2006/07	2007/08	2008/09		
Demographic and socio-economic	Population total					114 527	115 291	115 643	116 122		48 272 353
	Population Density					-	-	-	1		40
	Medical aid coverage (%)					18.0	17.5	17.5	-	13	14.3
	Access to piped water (%) - (2005-06 GHS, 2007 Comm. Survey)					94.3	93.3	95.6	-	20	88.7
	Deprivation index - (high value = most deprived)	2.04	-	-	-	1.45	1.49	0.97	-	2	-
	Socio-economic quintile - (1=poor, 5=best)	-	-	-	-	5	5	5	-	-	-
Input	Total PHC expenditure per capita - (real 2008/09 prices)	-	-	-	-	927	1 054	1 258	1 394	3	794
	Non-hospital PHC expenditure per capita - (real 2008/09 prices)	400	-	-	-	524	597	701	736	19	367
	% District health services expenditure on District Management	-	-	-	-	8.3	9.8	8.1	8.5		5.6
	% District health services expenditure on District Hospitals	-	-	-	-	37.5	40.3	39.2	40.9		41.8
	PHC (Non-Hospital) Expenditure per Patient Visit - (real 2008/09 prices)	104	-	-	-	141	176	182	154	9	128
	Cost per PDE - (real 2008/09 prices)	-	-	-	-	1 038	1 380	1 855	1 900		1096
Process	Nurse clinical workload	-	-	-	48.5	24.1	20.9	21.6	18.4	44	23.3
	Average length of stay (ALOS)	-	-	2.6	2.4	3.1	3.0	2.3	2.3	4	4.3
	Bed utilisation rate (BUR)	-	-	53.1	57.9	57.8	77.5	52.6	69.4	25	66.9
	Clinic supervision rate	-	-	-	-	-	7.0	7.4	9.7	50	61.4
Output	Male condom distribution rate	-	-	4.7	5.5	5.5	6.5	7.6	8.3	35	12.3
	Immunisation coverage < 1 year	-	-	72.7	74.3	72.8	85.1	74.3	79.1	41	89.5
	Immunisation drop-out rate (DTP1-3)	-	-	1.5	0.2	2.3	5.4	1.0	0.2	13	2.7
	Measles Coverage						79.8	80.9	83.3	14	91.8
	Measles drop-out rate						7.6	13.8	11.4	16	16.3
	Caesarean section rate	-	-	17.7	17.1	15.4	13.2	16.9	18.9		16.1
	Proportion ANC clients tested for HIV	-	-	0.6	5.3	45.2	82.4	92.8	98.1	17	86.7
	HIV prevalence among ANC clients tested (DHIS)	-	-	0.0	0.0	4.5	6.0	5.2	3.9	1	24.3
	HIV prevalence among ANC clients tested (survey)	-	-	-	-	-	5.3 (0.8-9.7)	7.3 (4.1-12.4)	2.2 (0.5-8.8)	1	29.3
	Baby PCR test around 6 weeks uptake								0.0		
	Antenatal client CD4 1st test rate								0.0		
Outcome	Utilisation rate	-	-	3.4	3.5	3.3	3.2	3.3	4.0	4	2.4
	Incidence of STI treated - new	-	-	1.9	1.6	1.3	1.4	1.5	1.6	1	4.6
	TB cure rate (2003 - 2007)	-	-	43.8	57.6	58.7	71.3	62.0		32	64.0
	TB smear conversion rate (2004 - 2008)	-	-	-	39.2	43.9	49.3	52.6	61.7	25	62.5
	TB case load (new Sm+)	-	-	-	-	-	-	330	388		138 803
Impact	Delivery rate in facility	-	-	68.4	71.2	77.4	68.4	57.2	71.1	39	86.6
	Stillbirth rate	-	-	19.8	21.0	22.9	31.2	27.1	17.9	11	22.3
	Perinatal mortality rate in facility	-	-	32.8	42.5	27.4	47.1	42.1	29.9	24	31.4

Number of health facilities and beds	Clinic	CHCs	Mobile Service	District Hospital	Regional Hospital	Provincial Tertiary Hospital	Central Hospital	Specialised Hospital	Private hospitals	Beds
Number of public sector facilities (2009) and beds (2009)	19	9	8	4	0	0	0	0		166
Number of private sector facilities and beds (2008)									1	26

Annual indicators for district: Pixley ka Seme – DC7

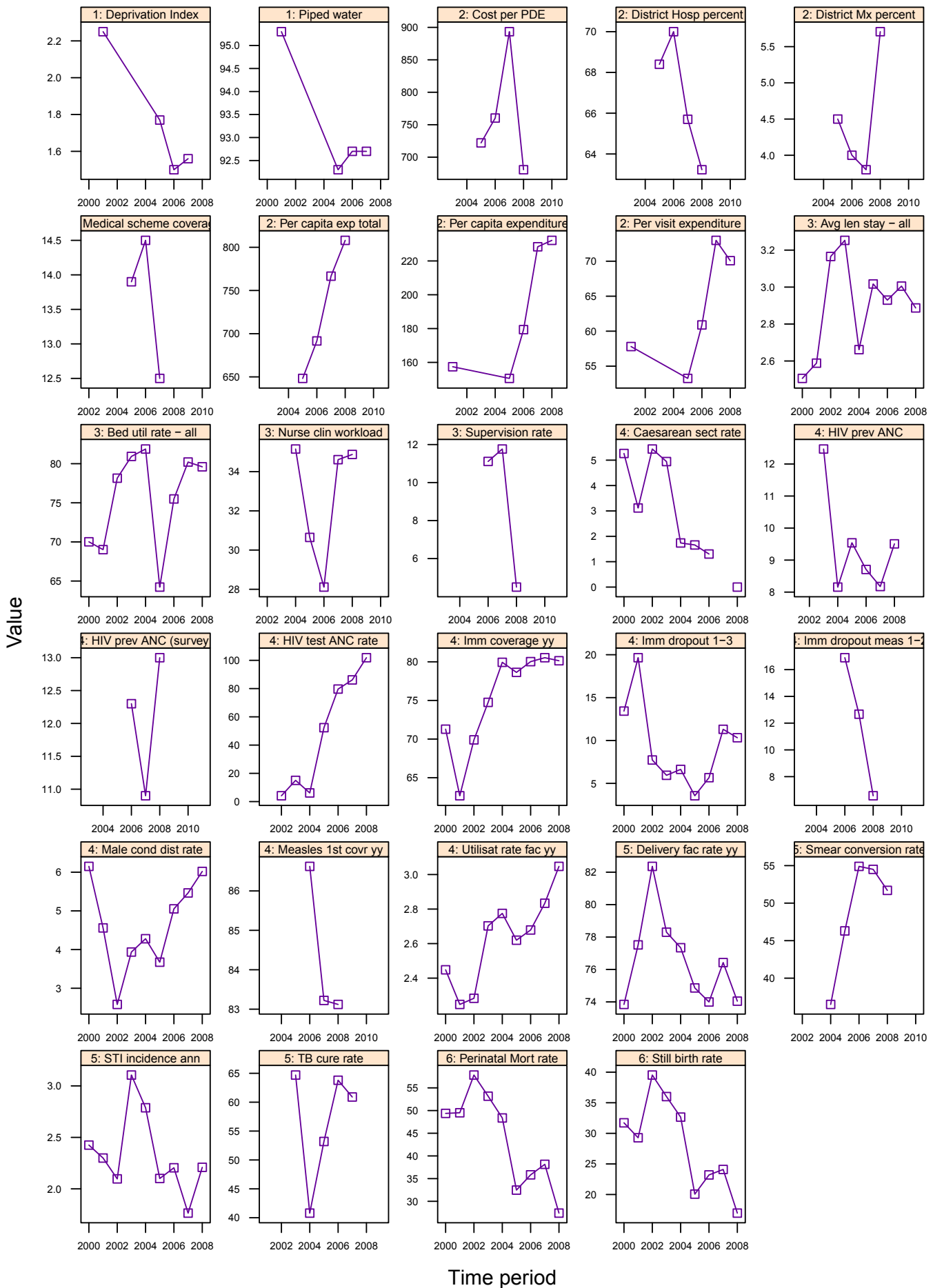


Annual indicators for Pixley ka Seme District

DC7	Pixley ka Seme District Municipality	Year								District Rank (1=best)	National value
		2001/02	2002/03	2003/04	2004/05	2005/06	2006/07	2007/08	2008/09		
Demographic and socio-economic	Population total					183 762	185 140	185 440	186 068		48 272 353
	Population Density					-	-	-	2		40
	Medical aid coverage (%)					13.2	11.6	14.7	-	20	14.3
	Access to piped water (%) - (2005-06 GHS, 2007 Comm. Survey)					91.8	95.3	95.3	-	21	88.7
	Deprivation index - (high value = most deprived)	2.42	-	-	-	2.18	1.93	1.84	-	18	-
	Socio-economic quintile - (1=poor, 5=best)	-	-	-	-	4	4	4	-	-	-
Input	Total PHC expenditure per capita - (real 2008/09 prices)	-	-	-	-	766	800	878	994	13	794
	Non-hospital PHC expenditure per capita - (real 2008/09 prices)	257	-	-	-	298	352	417	476	9	367
	% District health services expenditure on District Management	-	-	-	-	4.8	3.6	2.6	2.8		5.6
	% District health services expenditure on District Hospitals	-	-	-	-	56.4	55.8	52.6	43.9		41.8
	PHC (Non-Hospital) Expenditure per Patient Visit - (real 2008/09 prices)	74	-	-	-	81	85	102	109	38	128
	Cost per PDE - (real 2008/09 prices)	-	-	-	-	1 422	1 196	1 418	1 383		1096
Process	Nurse clinical workload	-	-	-	34.3	26.6	28.4	19.4	31.5	9	23.3
	Average length of stay (ALOS)	-	-	2.7	2.6	2.3	2.3	2.2	2.2	2	4.3
	Bed utilisation rate (BUR)	-	-	78.1	72.0	61.3	60.4	62.2	64.5	33	66.9
	Clinic supervision rate	-	-	-	-	-	26.4	10.4	7.6	51	61.4
Output	Male condom distribution rate	-	-	7.8	7.1	9.0	8.4	6.8	8.4	33	12.3
	Immunisation coverage < 1 year	-	-	101.3	104.4	105.9	118.0	98.0	100.5	11	89.5
	Immunisation drop-out rate (DTP1-3)	-	-	9.5	13.6	9.7	6.3	4.6	6.0	43	2.7
	Measles Coverage						112.4	103.5	103.6	45	91.8
	Measles drop-out rate						19.4	16.7	16.7	36	16.3
	Caesarean section rate	-	-	12.6	10.7	8.9	11.0	13.6	13.8		16.1
	Proportion ANC clients tested for HIV	-	-	57.1	65.7	70.0	93.6	104.4	110.1	4	86.7
	HIV prevalence among ANC clients tested (DHIS)	-	-	11.1	9.4	10.3	8.7	9.8	8.3	4	24.3
	HIV prevalence among ANC clients tested (survey)	-	-	-	-	-	10.7 (6.9-14.5)	14.2 (8.8-22.1)	13.3 (8.2-20.8)	6	29.3
	Baby PCR test around 6 weeks uptake								5.2		
	Antenatal client CD4 1st test rate								3.0		
	Utilisation rate	-	-	3.2	3.2	3.3	3.7	3.7	4.1	3	2.4
	Outcome	Incidence of STI treated - new	-	-	3.6	3.6	2.7	2.5	2.6	2.2	6
TB cure rate (2003 - 2007)		-	-	69.5	44.5	56.7	67.6	60.6		35	64.0
TB smear conversion rate (2004 - 2008)		-	-		40.5	41.6	56.1	53.6	68.8	19	62.5
TB case load (new Sm+)		-	-	-	-	-	-	679	804		138 803
Delivery rate in facility		-	-	75.1	85.2	75.8	100.3	85.3	94.5	12	86.6
Impact	Stillbirth rate	-	-	19.7	23.7	8.7	18.2	24.6	25.4	41	22.3
	Perinatal mortality rate in facility	-	-	36.6	34.5	16.1	32.7	45.9	41.1	48	31.4

Number of health facilities and beds	Clinic	CHCs	Mobile Service	District Hospital	Regional Hospital	Provincial Tertiary Hospital	Central Hospital	Specialised Hospital	Private hospitals	Beds
Number of public sector facilities (2009) and beds (2009)	29	6	2	5	0	0	0	0		272
Number of private sector facilities and beds (2008)									0	0

Annual indicators for district: Siyanda – DC8



Annual indicators for Siyanda District

DC8	Siyanda District Municipality	Year								District Rank (1=best)	National value
		2001/02	2002/03	2003/04	2004/05	2005/06	2006/07	2007/08	2008/09		
Demographic and socio-economic	Population total					227 620	231 261	233 826	236 749		48 272 353
	Population Density					-	-	-	2		40
	Medical aid coverage (%)					13.9	14.5	12.5	-	26	14.3
	Access to piped water (%) - (2005-06 GHS, 2007 Comm. Survey)					92.3	92.7	92.7	-	23	88.7
	Deprivation index - (high value = most deprived)	2.25	-	-	-	1.77	1.50	1.56	-	9	-
	Socio-economic quintile - (1=poor, 5=best)	-	-	-	-	4	5	5	-	-	-
Input	Total PHC expenditure per capita - (real 2008/09 prices)	-	-	-	-	648	692	767	808	32	794
	Non-hospital PHC expenditure per capita - (real 2008/09 prices)	157	-	-	-	151	179	228	232	11	367
	% District health services expenditure on District Management	-	-	-	-	4.5	4.0	3.8	5.7		5.6
	% District health services expenditure on District Hospitals	-	-	-	-	68.4	70.0	65.7	63.2		41.8
	PHC (Non-Hospital) Expenditure per Patient Visit - (real 2008/09 prices)	58	-	-	-	53	61	73	70	52	128
	Cost per PDE - (real 2008/09 prices)	-	-	-	-	722	760	893	681		1096
Process	Nurse clinical workload	-	-	-	35.2	30.6	28.1	34.6	34.9	3	23.3
	Average length of stay (ALOS)	-	-	3.3	2.7	3.0	2.9	3.0	2.9	11	4.3
	Bed utilisation rate (BUR)	-	-	80.9	81.9	64.2	75.5	80.2	79.6	6	66.9
	Clinic supervision rate	-	-	-	-	-	11.1	11.8	4.5	52	61.4
Output	Male condom distribution rate	-	-	3.9	4.3	3.7	5.1	5.5	6.0	45	12.3
	Immunisation coverage < 1 year	-	-	74.8	79.9	78.6	80.0	80.5	80.1	39	89.5
	Immunisation drop-out rate (DTP1-3)	-	-	5.9	6.6	3.6	5.7	11.3	10.3	52	2.7
	Measles Coverage						86.6	83.2	83.1	13	91.8
	Measles drop-out rate						16.9	12.7	6.6	4	16.3
	Caesarean section rate	-	-	4.9	1.7	1.7	1.3	0.0	0.0		16.1
	Proportion ANC clients tested for HIV	-	-	15.0	6.1	52.3	79.7	86.1	101.9	10	86.7
	HIV prevalence among ANC clients tested (DHIS)	-	-	12.5	8.2	9.5	8.7	8.2	9.5	6	24.3
	HIV prevalence among ANC clients tested (survey)	-	-	-	-	-	12.3 (8.4-16.2)	10.9 (7.7-15.3)	13 (8.4-19.5)	4	29.3
	Baby PCR test around 6 weeks uptake								16.1		
	Antenatal client CD4 1st test rate								92.2		
	Utilisation rate	-	-	2.7	2.8	2.6	2.7	2.8	3.0	11	2.4
	Outcome	Incidence of STI treated - new	-	-	3.1	2.8	2.1	2.2	1.8	2.2	4
TB cure rate (2003 - 2007)		-	-	64.7	40.8	53.2	63.8	60.9		34	64.0
TB smear conversion rate (2004 - 2008)		-	-		36.5	46.3	54.9	54.5	51.7	40	62.5
TB case load (new Sm+)		-	-	-	-	-	-	935	1 049		138 803
Delivery rate in facility		-	-	78.3	77.3	74.9	74.0	76.4	74.0	37	86.6
Impact	Stillbirth rate	-	-	36.0	32.7	20.1	23.2	24.1	17.0	8	22.3
	Perinatal mortality rate in facility	-	-	53.2	48.4	32.5	35.8	38.2	27.4	14	31.4

Number of health facilities and beds	Clinic	CHCs	Mobile Service	District Hospital	Regional Hospital	Provincial Tertiary Hospital	Central Hospital	Specialised Hospital	Private hospitals	Beds
Number of public sector facilities (2009) and beds (2009)	14	6	12	3	1	0	0	1		297
Number of private sector facilities and beds (2008)									1	50