

## North West Province

The North West province had a population of over 3.1 million people in 2008. In 2007 almost 90% of households had access to piped water. Its districts range from the less deprived socio-economic quintile 4 (Dr Kenneth Kaunda district) to the more deprived socio-economic quintile 2 (Ngaka Modiri Molema and Dr Ruth Segomotsi Mompoti districts).

The province's total PHC expenditure per capita of R822<sup>73</sup> in 2008/09 was the fifth highest in the country. The non-hospital per capita expenditure on PHC increased from R376 in 2007/08 to R412 in 2008/09 (second highest among the provinces). This 2008/09 expenditure ranged from R327 per capita in Bojanala Platinum district to R505 in Ngaka Modiri Molema district. The average non-hospital cost per patient visit to a primary health care facility was R133, R5 higher than the national average and second highest in the country.

The proportion of district health expenditure on district hospital services was 33.5% in 2008/09, while 8.0% was spent on district management. The proportion spent on district hospitals varied between districts – from 27.2% in Bojanala Platinum to 43.7% in Dr Ruth Segomotsi Mompoti. The average bed utilisation rate of the 17 district hospitals in the province improved slightly from 58.0% (lowest rate in the country) to 61.4% in 2008/09, the second lowest rate in the country. The average length of stay in district hospitals decreased from 4.0 days in 2007/08 to 3.7 days in 2008/09. The province had the highest cost per patient day equivalent (R1364) in district hospitals in 2008/09.

There was a slight decrease in the nurse clinical workload, from 21.1 patients per nurse per day in 2007/08 to 20.4 in 2008/09, below the national average of 23.3. The PHC utilisation of public health facilities increased from 2.5 visits per person per year in 2007/08 to 2.7 in 2008/09. The clinic supervision rate remained around a low of 46% for the third year running and was over 15 percentage points below the national average in 2008/09. It ranged from a mere 35.3% of facilities being supervised in Dr Ruth Segomotsi Mompoti district to 57.7% in Dr Kenneth Kaunda district, clearly insufficient to ensure quality PHC.

In 2007, North West province had the lowest TB cure rate in the country, almost ten percentage points below the national average of 64.0%. This rate decreased by 5.6 percentage points to 54.1% in 2007. The smear conversion rate was also the lowest in the country in both 2007 and 2008 and has remained almost unchanged from the rate of 48.4% achieved in 2004. The trend of both these indicators is worrying and is an indictment on the management in this province that the priority TB control programme is showing a decline whilst there is improvement achieved nationally. The trends seen in Ngaka Modiri Molema district are of particular concern as there was a steep decline between 2006 and 2007 in both the TB cure rate (by 14.2 percentage points to 48.4%) and in the smear conversion rate (by 10.0 percentage points to 44.1%).

The proportion of women tested for HIV in 2008/09 at 101.6% was the highest in the country. This improbably high figure is an indication that somehow more women than the total amount of ANC clients are tested at first visit. The high figures recorded for Ngaka Modiri Molema district (113.5%) and 109.9% in Dr Kenneth Kaunda district need to be re-evaluated. There was a notable improvement in the proportion of women tested for HIV in Bojanala Platinum district from 66.7% in 2007/08 to 92.4% in 2008/09. In 2008, as measured by the national ANC survey<sup>41</sup>, the HIV prevalence in the province was 31%, ranking it as the fourth highest province in South Africa.

In 2008/09, the proportion of infants born to known HIV positive women who were PCR tested for HIV six weeks after birth (Baby PCR test around 6 weeks uptake) ranged from 66.2% in Bojanala Platinum district to 115.5% in Dr Ruth Segomotsi Mompoti district. There were no data in DHIS for the indicator measuring HIV positive antenatal clients (not on HAART) who are CD4 tested for the first time during their current pregnancy (Antenatal client CD4 1st test rate).

The male condom distribution rate of 7.3 condoms per male 15 years and older per year in 2008/09 remained far below the national average of 12.3 condoms and was the second lowest in the country, despite a small improvement from the rate achieved in 2007/08. This is one of the easier programmes to manage yet important HIV prevention activities and appears to require greater managerial attention. The incidence of STIs, in spite of the slight increase from 3.8% in 2007/08 to 4.1% in 2008/09, remained below the national average of 4.6%.

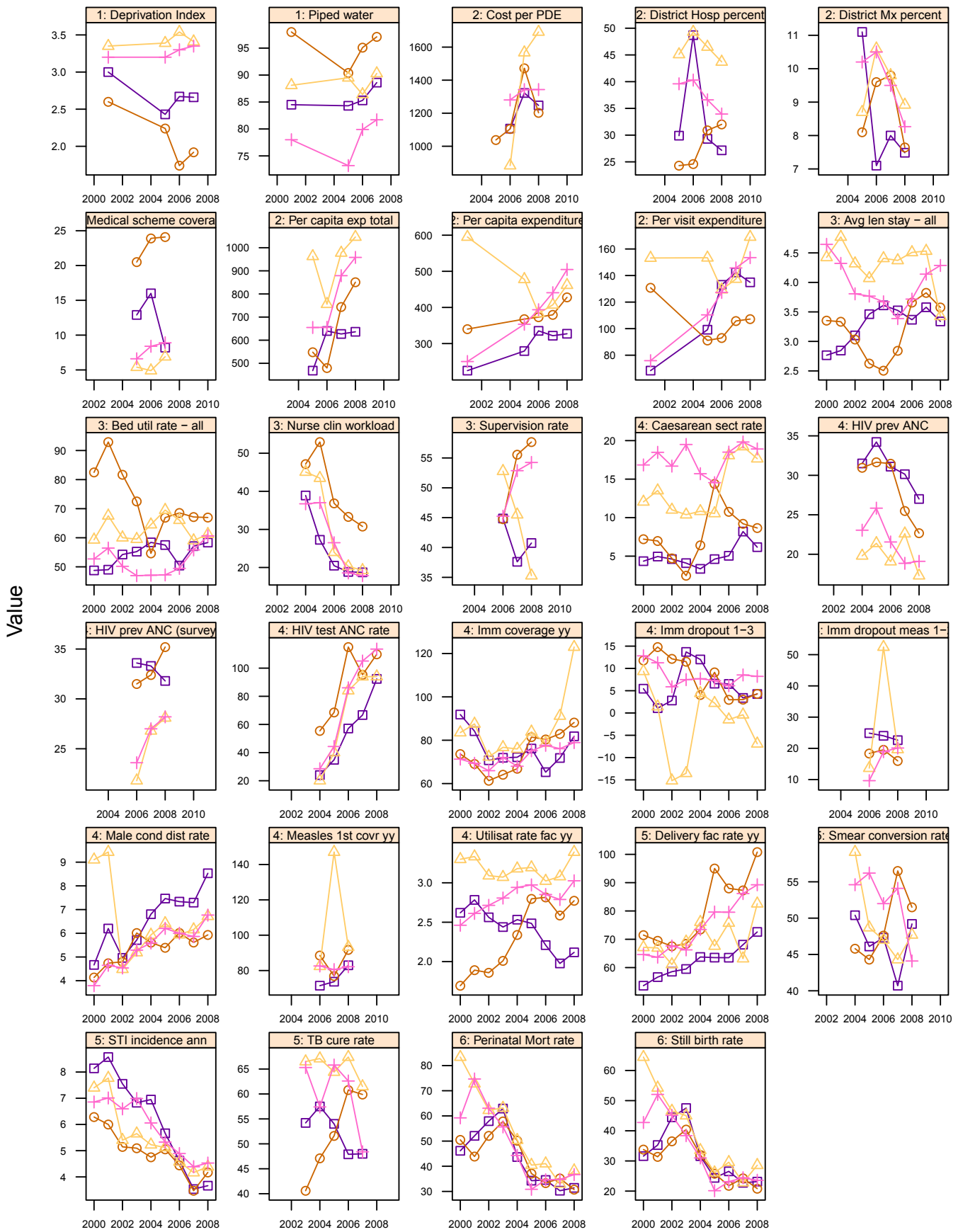
The delivery rate in facilities increased from 75.9% in 2007/08 to 84.2% in 2008/09, but remains below the

<sup>73</sup> Figures are in REAL prices that have been adjusted for the effects of inflation to 2008/09 prices.

national average of 86.6%. The Caesarean section rate in district hospitals dropped slightly from 14.1% in 2007/08 to 13.4% in 2008/09, with wide differences seen among the districts ranging from a low of 6.2% in Bojanala Platinum district to 18.9% in Ngaka Modiri Molema district. The reasons for such wide scale differences need to be investigated.

DTP1-3 immunisation coverage for children under one year improved from 77.9% in 2007/08 to 88.7% in 2008/09, just below the national average of 89.5%. The 123% coverage recorded for Dr Ruth Segomotsi Mompati district in 2008/09 needs to be checked for accuracy. The DTP1-3 drop-out rate has shown improvement over the past years to 3.7% in 2008/09. The stillbirth rate and perinatal mortality rate in 2008/09 at 23.5 and 33.7 per 1000 deliveries respectively are significantly lower than in 2002/03 and have remained fairly static over the last three years.

### Annual indicators for districts in North West (NW)



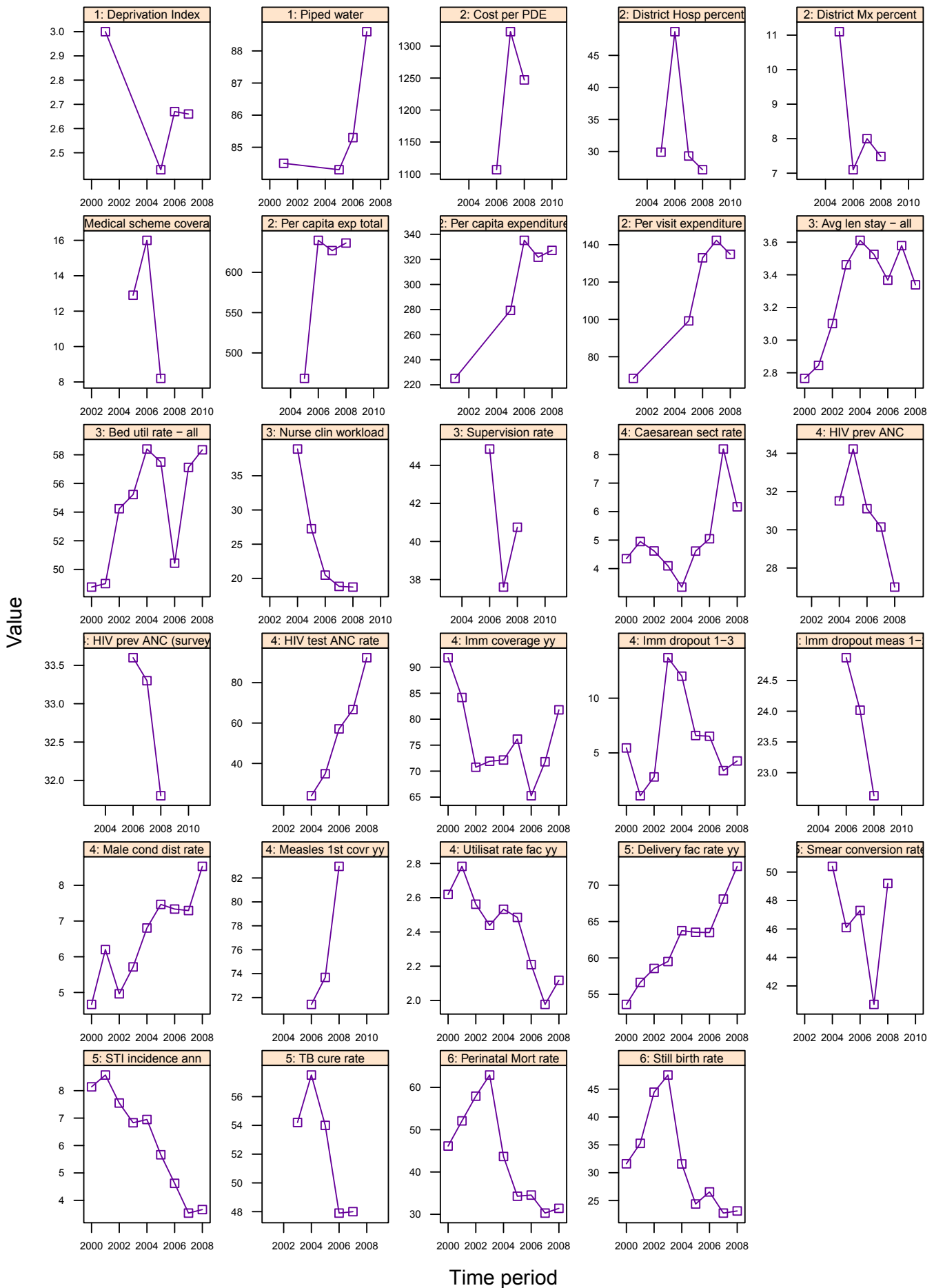
Districts			
Bojanala Platinum: DC37	□	Dr Ruth Segomotsi Mompoti: DC39	△
Dr Kenneth Kaunda: DC40	○	Ngaka Modiri Molema: DC38	+

## Annual indicators for North West Province

NW	North West	Year								District Rank (1=best)	National value
		2001/02	2002/03	2003/04	2004/05	2005/06	2006/07	2007/08	2008/09		
Demographic and socio-economic	Population total					3 098 713	3 125 513	3 139 835	3 157 050		48 272 353
	Population Density					-	-	-	30		40
	Medical aid coverage (%)					11.8	14.2	11.2	-	-	14.3
	Access to piped water (%) - (2005-06 GHS, 2007 Comm. Survey)					85.2	86.2	89.9	-	-	88.7
	Deprivation index - (high value = most deprived)	-	-	-	-	-	-	-	-	-	-
	Socio-economic quintile - (1=poor, 5=best)	-	-	-	-	-	-	-	-	-	-
Input	Total PHC expenditure per capita - (real 2008/09 prices)	-	-	-	-	611	634	769	822	-	794
	Non-hospital PHC expenditure per capita - (real 2008/09 prices)	321	-	-	-	346	365	376	412	-	367
	% District health services expenditure on District Management	-	-	-	-	9.8	9.0	9.1	8.0		5.6
	% District health services expenditure on District Hospitals	-	-	-	-	35.7	43.5	35.3	33.5		41.8
	PHC (Non-Hospital) Expenditure per Patient Visit - (real 2008/09 prices)	99	-	-	-	109	121	134	133	-	128
	Cost per PDE - (real 2008/09 prices)	-	-	-	-	1 038	1 084	1 409	1 364		1096
Process	Nurse clinical workload	-	-	-	40.4	35.7	25.3	21.1	20.4	-	23.3
	Average length of stay (ALOS)	-	-	3.6	3.7	3.6	3.8	4.0	3.7	-	4.3
	Bed utilisation rate (BUR)	-	-	54.2	55.7	59.1	57.5	58.0	61.4	-	66.9
	Clinic supervision rate	-	-	-	-	-	46.3	46.1	46.4	-	61.4
Output	Male condom distribution rate	-	-	5.6	6.1	6.6	6.5	6.4	7.3	-	12.3
	Immunisation coverage < 1 year	-	-	71.1	70.6	78.2	73.5	77.9	88.7	-	89.5
	Immunisation drop-out rate (DTP1-3)	-	-	7.5	8.0	6.7	4.3	4.1	3.6	-	2.7
	Measles Coverage						79.5	87.1	86.2	-	91.8
	Measles drop-out rate						17.6	29.3	20.1	-	16.3
	Caesarean section rate	-	-	10.2	9.3	10.4	12.7	14.1	13.4		16.1
	Proportion ANC clients tested for HIV	-	-	0.0	32.8	46.7	79.7	85.6	101.6	-	86.7
	HIV prevalence among ANC clients tested (DHIS)	-	-	-	28.1	29.7	27.0	24.6	22.6	-	24.3
	HIV prevalence among ANC clients tested (survey)	-	-	-	-	-	29 (26.9-31.1)	30.6 (28.6-32.8)	31 (28.8-33.3)	-	29.3
	Baby PCR test around 6 weeks uptake								81.0		
	Antenatal client CD4 1st test rate								0.0		
	Utilisation rate	-	-	2.5	2.7	2.8	2.6	2.5	2.7	-	2.4
Outcome	Incidence of STI treated - new	-	-	6.3	6.0	5.4	4.6	3.8	4.1	-	4.6
	TB cure rate (2003 - 2007)	-	-	59.8	56.6	57.6	59.7	54.1		-	64.0
	TB smear conversion rate (2004 - 2008)	-	-	-	48.4	47.7	48.1	49.2	48.7	-	62.5
	TB case load (new Sm+)	-	-	-	-	-	-	10 120	10 713		138 803
	Delivery rate in facility	-	-	64.6	70.1	74.8	74.5	75.9	84.2	-	86.6
Impact	Stillbirth rate	-	-	42.8	31.9	24.0	24.9	23.6	23.5	-	22.3
	Perinatal mortality rate in facility	-	-	59.7	46.6	35.2	35.3	33.1	33.7	-	31.4

Number of health facilities and beds	Clinic	CHCs	Mobile Service	District Hospital	Regional Hospital	Provincial Tertiary Hospital	Central Hospital	Specialised Hospital	Private hospitals	Beds
Number of public sector facilities (2009) and beds (2009)	287	51	107	17	4	0	0	3		4 880
Number of private sector facilities and beds (2008)									17	2 165

### Annual indicators for district: Bojanala Platinum – DC37

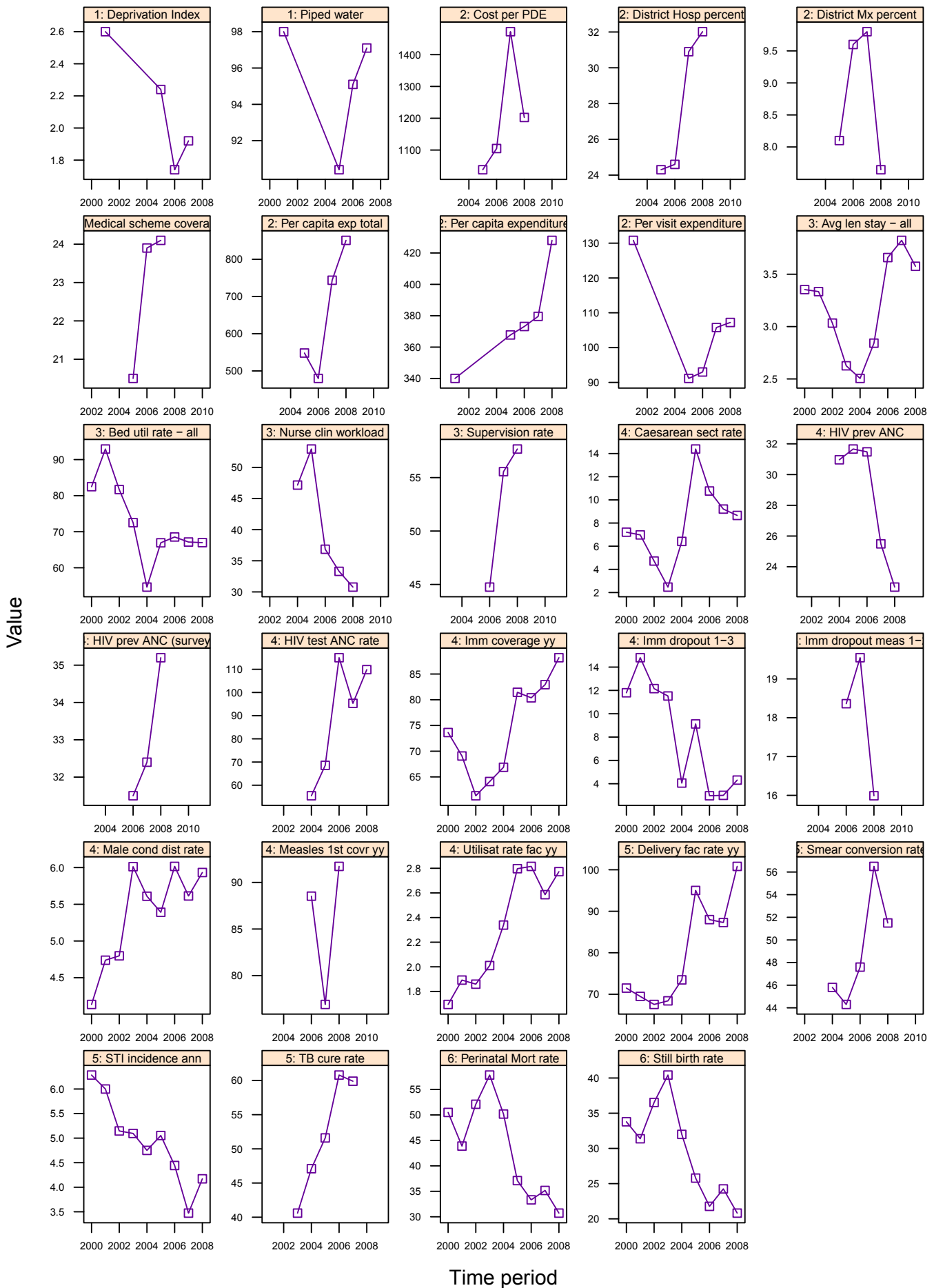


## Annual indicators for Bojanala District

DC37	Bojanala Platinum District Municipality	Year								District Rank (1=best)	National value
		2001/02	2002/03	2003/04	2004/05	2005/06	2006/07	2007/08	2008/09		
Demographic and socio-economic	Population total					1 247 125	1 261 012	1 271 534	1 282 466		48 272 353
	Population Density					-	-	-	70		40
	Medical aid coverage (%)					12.9	16.0	8.2	-	34	14.3
	Access to piped water (%) - (2005-06 GHS, 2007 Comm. Survey)					84.3	85.3	88.6	-	32	88.7
	Deprivation index - (high value = most deprived)	3.00	-	-	-	2.43	2.67	2.66	-	28	-
	Socio-economic quintile - (1=poor, 5=best)	-	-	-	-	3	3	3	-	-	-
Input	Total PHC expenditure per capita - (real 2008/09 prices)	-	-	-	-	468	640	627	636	41	794
	Non-hospital PHC expenditure per capita - (real 2008/09 prices)	225	-	-	-	279	335	322	327	33	367
	% District health services expenditure on District Management	-	-	-	-	11.1	7.1	8.0	7.5		5.6
	% District health services expenditure on District Hospitals	-	-	-	-	29.9	48.7	29.3	27.2		41.8
	PHC (Non-Hospital) Expenditure per Patient Visit - (real 2008/09 prices)	68	-	-	-	99	133	142	135	17	128
	Cost per PDE - (real 2008/09 prices)	-	-	-	-	-	1 107	1 323	1 247		1096
Process	Nurse clinical workload	-	-	-	38.9	27.3	20.5	18.8	18.7	41	23.3
	Average length of stay (ALOS)	-	-	3.5	3.6	3.5	3.4	3.6	3.3	16	4.3
	Bed utilisation rate (BUR)	-	-	55.2	58.4	57.5	50.4	57.1	58.3	44	66.9
	Clinic supervision rate	-	-	-	-	-	44.9	37.6	40.7	44	61.4
Output	Male condom distribution rate	-	-	5.7	6.8	7.5	7.3	7.3	8.5	31	12.3
	Immunisation coverage < 1 year	-	-	71.9	72.1	76.2	65.3	71.8	81.8	37	89.5
	Immunisation drop-out rate (DTP1-3)	-	-	13.7	12.0	6.6	6.5	3.4	4.3	37	2.7
	Measles Coverage						71.4	73.7	83.0	12	91.8
	Measles drop-out rate						24.9	24.0	22.6	49	16.3
	Caesarean section rate	-	-	4.1	3.4	4.6	5.0	8.2	6.2		16.1
	Proportion ANC clients tested for HIV	-	-	0.0	24.0	34.9	57.1	66.7	92.4	29	86.7
	HIV prevalence among ANC clients tested (DHIS)	-	-	-	31.5	34.2	31.1	30.1	27.0	35	24.3
	HIV prevalence among ANC clients tested (survey)	-	-	-	-	-	33.6 (30.9-36.3)	33.3 (30.1-36.6)	31.8 (28.2-35.6)	34	29.3
	Baby PCR test around 6 weeks uptake								66.2		
	Antenatal client CD4 1st test rate								0.1		
	Utilisation rate	-	-	2.4	2.5	2.5	2.2	2.0	2.1	38	2.4
Outcome	Incidence of STI treated - new	-	-	6.8	6.9	5.7	4.6	3.5	3.7	20	4.6
	TB cure rate (2003 - 2007)	-	-	54.2	57.5	54.0	47.9	48.0		50	64.0
	TB smear conversion rate (2004 - 2008)	-	-	-	50.4	46.1	47.3	40.7	49.2	46	62.5
	TB case load (new Sm+)	-	-	-	-	-	-	3 447	3 426		138 803
	Delivery rate in facility	-	-	59.5	63.7	63.5	63.5	68.1	72.6	38	86.6
Impact	Stillbirth rate	-	-	47.5	31.6	24.4	26.5	22.7	23.1	35	22.3
	Perinatal mortality rate in facility	-	-	62.9	43.7	34.3	34.5	30.3	31.4	29	31.4

Number of health facilities and beds	Clinic	CHCs	Mobile Service	District Hospital	Regional Hospital	Provincial Tertiary Hospital	Central Hospital	Specialised Hospital	Private hospitals	Beds
Number of public sector facilities (2009) and beds (2009)	113	14	31	4	1	0	0	1		767
Number of private sector facilities and beds (2008)									5	512

### Annual indicators for district: Dr Kenneth Kaunda – DC40



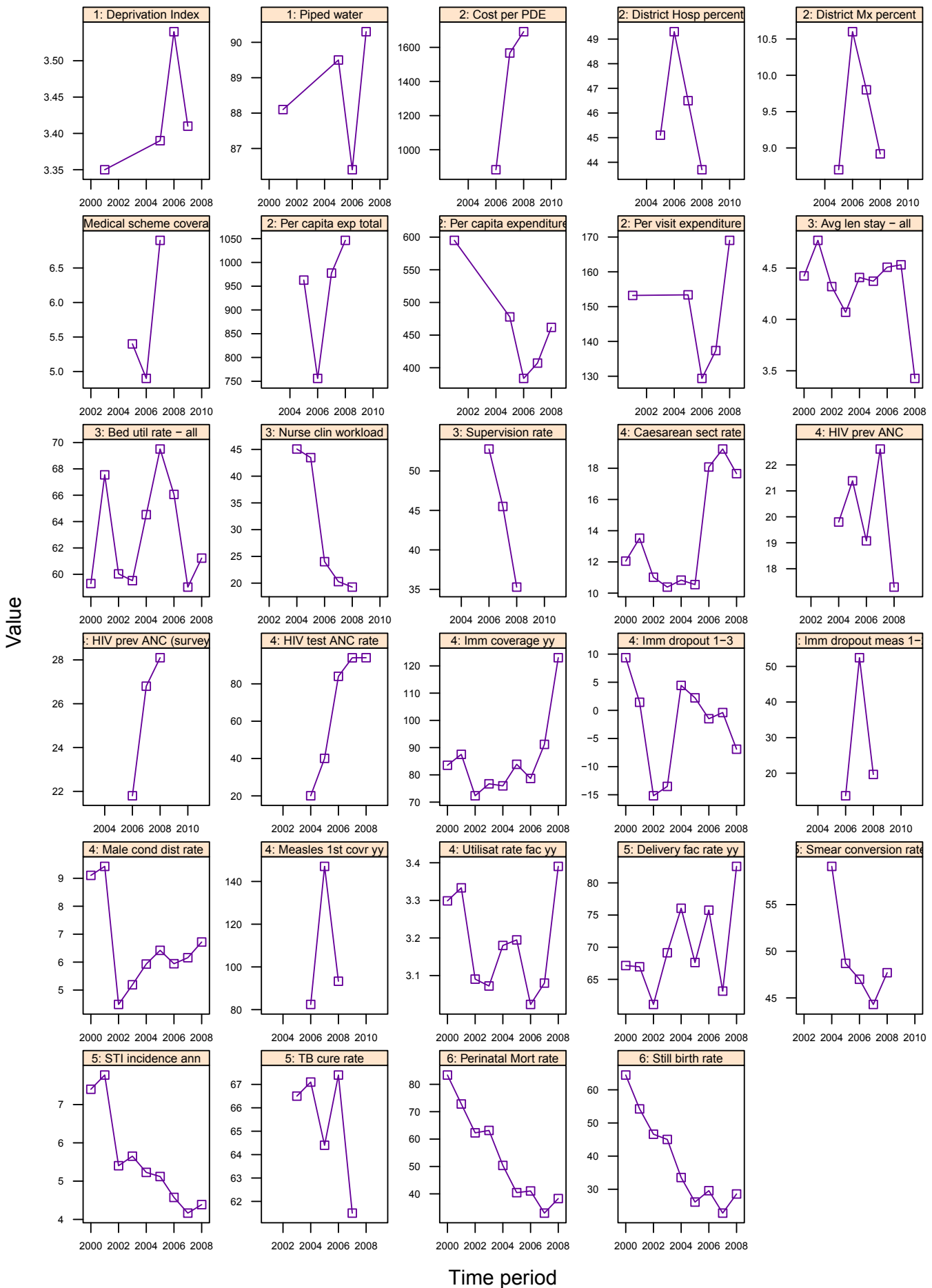
## Annual indicators for Dr Kenneth Kaunda District

DC40	Dr Kenneth Kaunda (Southern) District Municipality	Year								District Rank (1=best)	National value
		2001/02	2002/03	2003/04	2004/05	2005/06	2006/07	2007/08	2008/09		
Demographic and socio-economic	Population total					622 741	628 386	632 179	636 165		48 272 353
	Population Density					-	-	-	39		40
	Medical aid coverage (%)					20.5	23.9	24.1	-	5	14.3
	Access to piped water (%) - (2005-06 GHS, 2007 Comm. Survey)					90.4	95.1	97.1	-	14	88.7
	Deprivation index - (high value = most deprived)	2.60	-	-	-	2.24	1.74	1.92	-	20	-
	Socio-economic quintile - (1=poor, 5=best)	-	-	-	-	4	4	4	-	-	-
Input	Total PHC expenditure per capita - (real 2008/09 prices)	-	-	-	-	548	480	744	851	26	794
	Non-hospital PHC expenditure per capita - (real 2008/09 prices)	340	-	-	-	368	373	380	428	36	367
	% District health services expenditure on District Management	-	-	-	-	8.1	9.6	9.8	7.6		5.6
	% District health services expenditure on District Hospitals	-	-	-	-	24.3	24.6	30.9	32.0		41.8
	PHC (Non-Hospital) Expenditure per Patient Visit - (real 2008/09 prices)	131	-	-	-	91	93	106	107	40	128
	Cost per PDE - (real 2008/09 prices)	-	-	-	-	1 038	1 105	1 472	1 202		1096
Process	Nurse clinical workload	-	-	-	47.2	52.9	36.9	33.3	30.8	12	23.3
	Average length of stay (ALOS)	-	-	2.6	2.5	2.8	3.7	3.8	3.6	22	4.3
	Bed utilisation rate (BUR)	-	-	72.5	54.6	66.9	68.5	67.1	67.0	30	66.9
	Clinic supervision rate	-	-	-	-	-	44.8	55.6	57.7	30	61.4
Output	Male condom distribution rate	-	-	6.0	5.6	5.4	6.0	5.6	5.9	47	12.3
	Immunisation coverage < 1 year	-	-	64.1	66.9	81.4	80.4	82.9	88.2	26	89.5
	Immunisation drop-out rate (DTP1-3)	-	-	11.5	4.1	9.1	3.0	3.0	4.3	38	2.7
	Measles Coverage						88.5	76.9	91.7	29	91.8
	Measles drop-out rate						18.4	19.5	16.0	31	16.3
	Caesarean section rate	-	-	2.5	6.4	14.4	10.8	9.2	8.7		16.1
	Proportion ANC clients tested for HIV	-	-	0.0	55.4	68.6	115.0	95.3	109.9	5	86.7
	HIV prevalence among ANC clients tested (DHIS)	-	-	-	31.0	31.7	31.5	25.5	22.7	26	24.3
	HIV prevalence among ANC clients tested (survey)	-	-	-	-	-	31.5 (27.4-35.6)	32.4 (27.5-37.8)	35.2 (30.3-40.4)	42	29.3
	Baby PCR test around 6 weeks uptake								81.8		
	Antenatal client CD4 1st test rate								0.0		
	Outcome	Utilisation rate	-	-	2.0	2.3	2.8	2.8	2.6	2.8	18
Incidence of STI treated - new		-	-	5.1	4.8	5.1	4.4	3.5	4.2	26	4.6
TB cure rate (2003 - 2007)		-	-	40.6	47.1	51.6	60.8	59.9		36	64.0
TB smear conversion rate (2004 - 2008)		-	-		45.8	44.3	47.6	56.5	51.5	42	62.5
TB case load (new Sm+)		-	-	-	-	-	-	2 989	3 263		138 803
Impact	Delivery rate in facility	-	-	68.4	73.5	95.0	88.0	87.3	100.8	6	86.6
	Stillbirth rate	-	-	40.4	32.0	25.8	21.8	24.3	20.8	22	22.3
	Perinatal mortality rate in facility	-	-	57.8	50.2	37.1	33.3	35.2	30.7	26	31.4

Number of health facilities and beds	Clinic	CHCs	Mobile Service	District Hospital	Regional Hospital	Provincial Tertiary Hospital	Central Hospital	Specialised Hospital	Private hospitals	Beds
Number of public sector facilities (2009) and beds (2009)	45	8	26	3	2	0	0	1		2 432
Number of private sector facilities and beds (2008)									10	1 520



### Annual indicators for district: Dr Ruth Segomotsi Mompoti – DC39

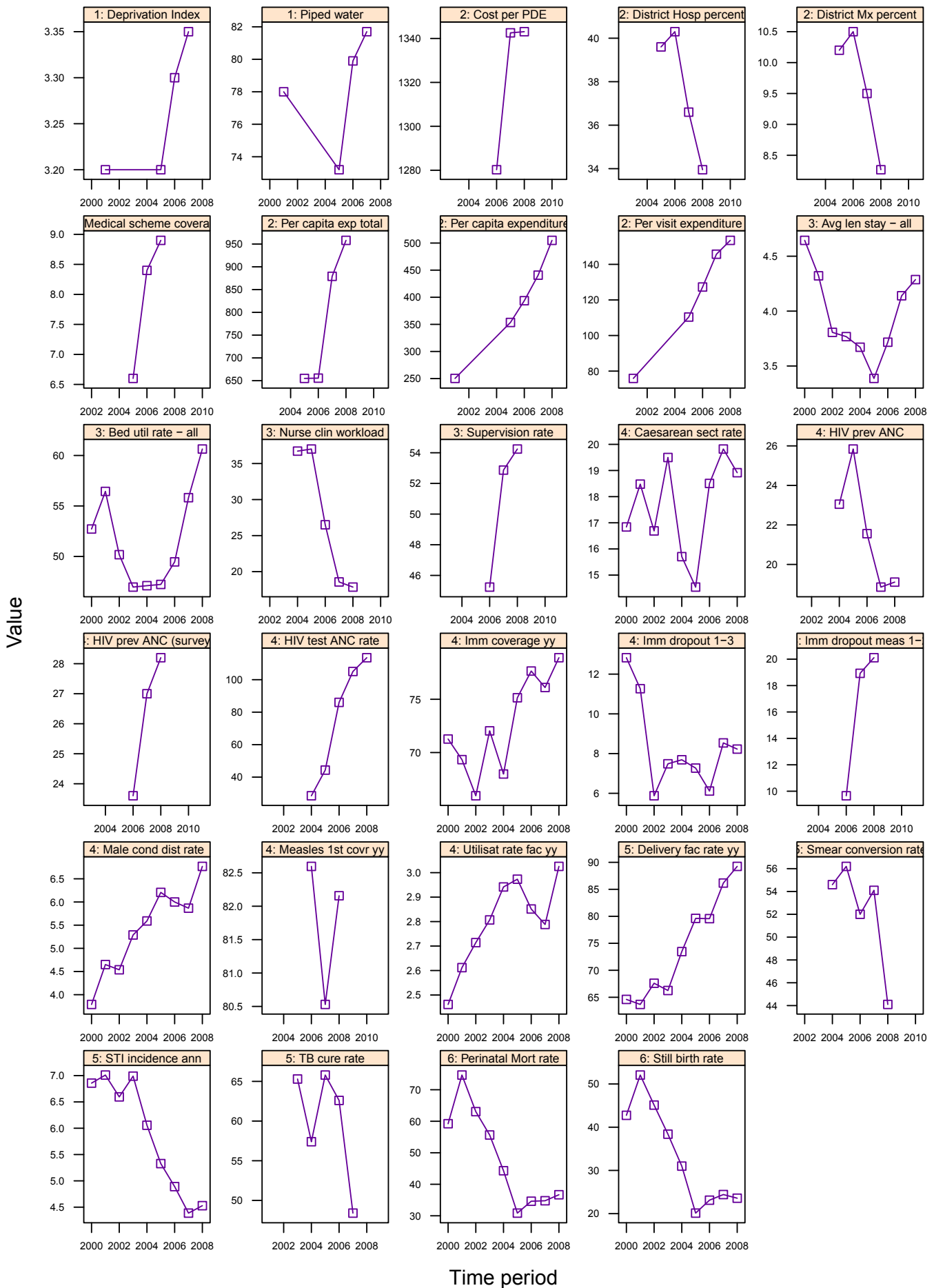


## Annual indicators for Dr Ruth Segomotsi Mompoti District

DC39	Dr Ruth Segomotsi Mompoti (Bophirima) District Municipality	Year								District Rank (1=best)	National value
		2001/02	2002/03	2003/04	2004/05	2005/06	2006/07	2007/08	2008/09		
Demographic and socio-economic	Population total					462 459	465 726	466 072	467 459		48 272 353
	Population Density					-	-	-	11		40
	Medical aid coverage (%)					5.4	4.9	6.9	-	39	14.3
	Access to piped water (%) - (2005-06 GHS, 2007 Comm. Survey)					89.5	86.4	90.3	-	29	88.7
	Deprivation index - (high value = most deprived)	3.35	-	-	-	3.39	3.54	3.41	-	37	-
	Socio-economic quintile - (1=poor, 5=best)	-	-	-	-	2	2	2	-	-	-
Input	Total PHC expenditure per capita - (real 2008/09 prices)	-	-	-	-	963	756	978	1 046	9	794
	Non-hospital PHC expenditure per capita - (real 2008/09 prices)	595	-	-	-	478	384	407	462	48	367
	% District health services expenditure on District Management	-	-	-	-	8.7	10.6	9.8	8.9		5.6
	% District health services expenditure on District Hospitals	-	-	-	-	45.1	49.3	46.5	43.7		41.8
	PHC (Non-Hospital) Expenditure per Patient Visit - (real 2008/09 prices)	153	-	-	-	153	129	137	169	4	128
	Cost per PDE - (real 2008/09 prices)	-	-	-	-	-	883	1 567	1 692		1096
Process	Nurse clinical workload	-	-	-	45.1	43.5	24.0	20.3	19.3	37	23.3
	Average length of stay (ALOS)	-	-	4.1	4.4	4.4	4.5	4.5	3.4	17	4.3
	Bed utilisation rate (BUR)	-	-	59.5	64.5	69.5	66.1	59.0	61.2	39	66.9
	Clinic supervision rate	-	-	-	-	-	52.8	45.5	35.3	48	61.4
Output	Male condom distribution rate	-	-	5.2	5.9	6.4	5.9	6.2	6.7	42	12.3
	Immunisation coverage < 1 year	-	-	76.7	76.0	83.9	78.7	91.2	123.0	3	89.5
	Immunisation drop-out rate (DTP1-3)	-	-	-13.5	4.4	2.2	-1.5	-0.4	-6.9	2	2.7
	Measles Coverage						82.4	147.1	93.3	32	91.8
	Measles drop-out rate						13.7	52.4	19.7	43	16.3
	Caesarean section rate	-	-	10.4	10.8	10.5	18.1	19.2	17.7		16.1
	Proportion ANC clients tested for HIV	-	-	0.0	20.1	40.1	84.0	94.0	94.0	26	86.7
	HIV prevalence among ANC clients tested (DHIS)	-	-	-	19.8	21.4	19.1	22.6	17.3	14	24.3
	HIV prevalence among ANC clients tested (survey)	-	-	-	-	-	21.8 (18.2-25.5)	26.8 (21.4-33.1)	28.1 (23.5-33.3)	25	29.3
	Baby PCR test around 6 weeks uptake								115.5		
	Antenatal client CD4 1st test rate								0.0		
	Utilisation rate	-	-	3.1	3.2	3.2	3.0	3.1	3.4	9	2.4
Outcome	Incidence of STI treated - new	-	-	5.7	5.2	5.1	4.6	4.2	4.4	28	4.6
	TB cure rate (2003 - 2007)	-	-	66.5	67.1	64.4	67.4	61.5		33	64.0
	TB smear conversion rate (2004 - 2008)	-	-	-	59.1	48.7	47.0	44.3	47.7	48	62.5
	TB case load (new Sm+)	-	-	-	-	-	-	1 660	1 826		138 803
	Delivery rate in facility	-	-	69.1	76.1	67.6	75.8	63.2	82.6	30	86.6
Impact	Stillbirth rate	-	-	45.0	33.5	26.1	29.6	22.8	28.6	49	22.3
	Perinatal mortality rate in facility	-	-	63.2	50.4	40.4	41.0	33.0	38.3	43	31.4

Number of health facilities and beds	Clinic	CHCs	Mobile Service	District Hospital	Regional Hospital	Provincial Tertiary Hospital	Central Hospital	Specialised Hospital	Private hospitals	Beds
Number of public sector facilities (2009) and beds (2009)	48	12	25	5	0	0	0	0		311
Number of private sector facilities and beds (2008)									1	40

### Annual indicators for district: Ngaka Modiri Molema – DC38



## Annual indicators for Ngaka Modiri Molema District

DC38	Ngaka Modiri Molema (Central) District Municipality	Year								District Rank (1=best)	National value
		2001/02	2002/03	2003/04	2004/05	2005/06	2006/07	2007/08	2008/09		
Demographic and socio-economic	Population total					766 388	770 389	770 050	770 960		48 272 353
	Population Density					-	-	-	28		40
	Medical aid coverage (%)					6.6	8.4	8.9	-	32	14.3
	Access to piped water (%) - (2005-06 GHS, 2007 Comm. Survey)					73.2	79.9	81.7	-	38	88.7
	Deprivation index - (high value = most deprived)	3.20	-	-	-	3.20	3.30	3.35	-	35	-
	Socio-economic quintile - (1=poor, 5=best)	-	-	-	-	2	2	2	-	-	-
Input	Total PHC expenditure per capita - (real 2008/09 prices)	-	-	-	-	655	656	879	958	17	794
	Non-hospital PHC expenditure per capita - (real 2008/09 prices)	250	-	-	-	354	394	441	505	18	367
	% District health services expenditure on District Management	-	-	-	-	10.2	10.5	9.5	8.3		5.6
	% District health services expenditure on District Hospitals	-	-	-	-	39.6	40.3	36.6	34.0		41.8
	PHC (Non-Hospital) Expenditure per Patient Visit - (real 2008/09 prices)	76	-	-	-	110	127	146	153	10	128
	Cost per PDE - (real 2008/09 prices)	-	-	-	-	-	1 280	1 343	1 343		1096
Process	Nurse clinical workload	-	-	-	36.7	37.0	26.5	18.6	17.9	46	23.3
	Average length of stay (ALOS)	-	-	3.8	3.7	3.4	3.7	4.1	4.3	31	4.3
	Bed utilisation rate (BUR)	-	-	47.0	47.1	47.2	49.5	55.8	60.6	40	66.9
	Clinic supervision rate	-	-	-	-	-	45.2	52.9	54.2	34	61.4
Output	Male condom distribution rate	-	-	5.3	5.6	6.2	6.0	5.9	6.8	40	12.3
	Immunisation coverage < 1 year	-	-	72.0	68.0	75.1	77.6	76.1	78.9	42	89.5
	Immunisation drop-out rate (DTP1-3)	-	-	7.5	7.7	7.3	6.1	8.5	8.2	49	2.7
	Measles Coverage						82.6	80.5	82.2	7	91.8
	Measles drop-out rate						9.7	18.9	20.1	47	16.3
	Caesarean section rate	-	-	19.5	15.7	14.5	18.5	19.8	18.9		16.1
	Proportion ANC clients tested for HIV	-	-	0.0	28.5	44.3	86.0	105.1	113.5	3	86.7
	HIV prevalence among ANC clients tested (DHIS)	-	-	-	23.1	25.8	21.6	18.9	19.1	18	24.3
	HIV prevalence among ANC clients tested (survey)	-	-	-	-	-	23.6 (20.1-27.1)	27 (24.3-29.9)	28.2 (24-32.8)	26	29.3
	Baby PCR test around 6 weeks uptake								85.2		
	Antenatal client CD4 1st test rate								0.0		
	Outcome	Utilisation rate	-	-	2.8	2.9	3.0	2.9	2.8	3.0	12
Incidence of STI treated - new		-	-	7.0	6.1	5.3	4.9	4.4	4.5	30	4.6
TB cure rate (2003 - 2007)		-	-	65.3	57.4	65.8	62.6	48.4		49	64.0
TB smear conversion rate (2004 - 2008)		-	-		54.6	56.2	52.0	54.1	44.1	50	62.5
TB case load (new Sm+)		-	-	-	-	-	-	2 024	2 198		138 803
Impact	Delivery rate in facility	-	-	66.3	73.5	79.6	79.6	86.2	89.3	21	86.6
	Stillbirth rate	-	-	38.4	31.0	20.1	23.1	24.4	23.6	37	22.3
	Perinatal mortality rate in facility	-	-	55.6	44.3	30.8	34.6	34.8	36.7	39	31.4

Number of health facilities and beds	Clinic	CHCs	Mobile Service	District Hospital	Regional Hospital	Provincial Tertiary Hospital	Central Hospital	Specialised Hospital	Private hospitals	Beds
Number of public sector facilities (2009) and beds (2009)	81	17	25	5	1	0	0	1		1 370
Number of private sector facilities and beds (2008)									1	93