

Section B:

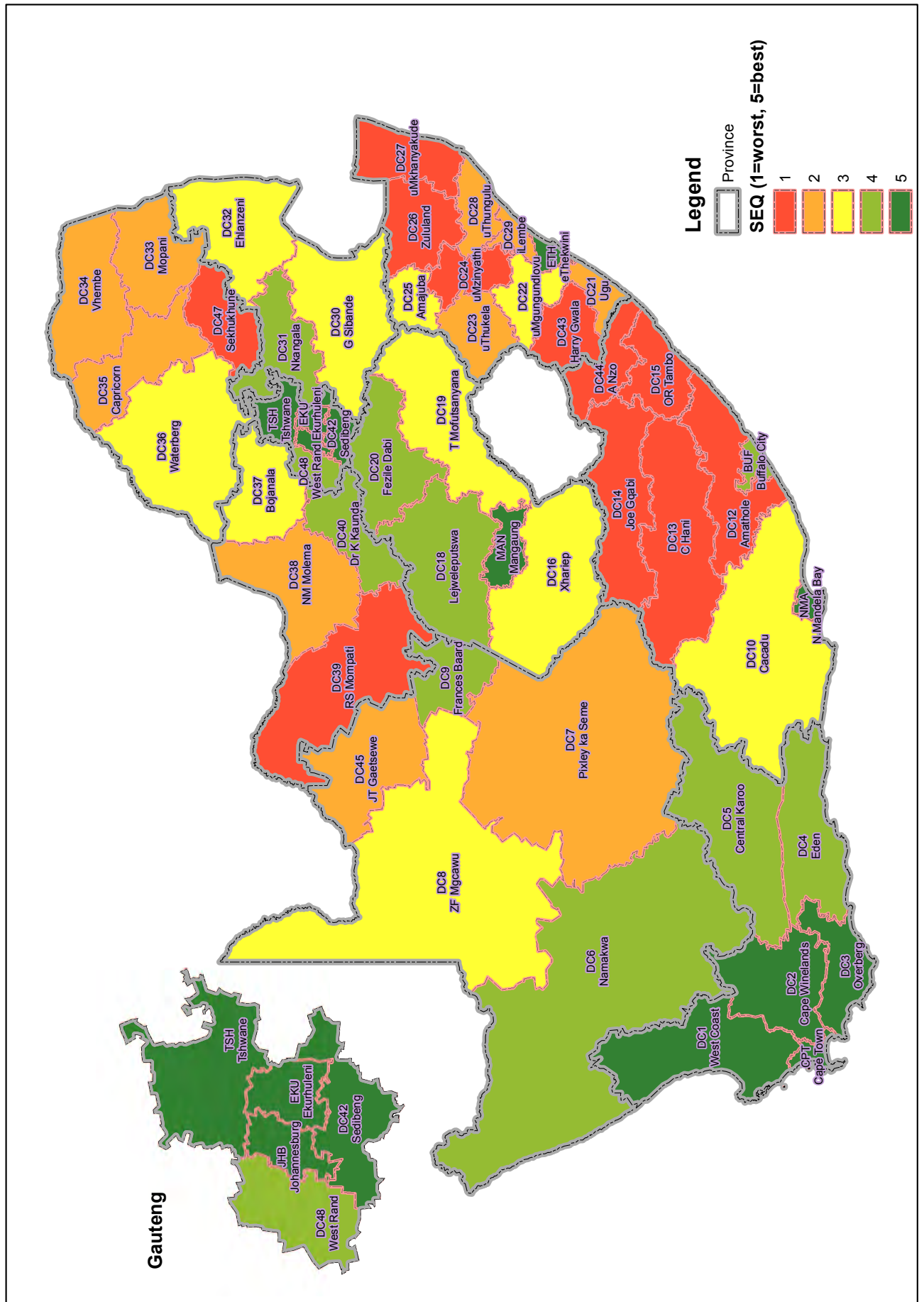
National and District Profiles

Contents

South Africa	352
16 Eastern Cape Province	
Buffalo City Metropolitan Municipality (BUF)	371
Cacadu District Municipality (DC10)	376
Amathole District Municipality (DC12)	381
Chris Hani District Municipality (DC13)	386
Joe Gqabi District Municipality (DC 14)	391
OR Tambo District Municipality (DC15)	396
Alfred Nzo District Municipality (DC44)	401
Nelson Mandela Bay Metropolitan District (NMA)	406
17 Free State	
Xhariep District Municipality (DC16)	411
Lejweleputswa District Municipality (DC18)	416
Thabo Mofutsanyana District Municipality (DC19)	421
Fezile Dabi District Municipality (DC20)	426
Mangaung Metropolitan Municipality (MAN)	431
18 Gauteng Province	
Sedibeng District Municipality (DC42)	436
West Rand District Municipality (DC48)	441
Ekurhuleni Metropolitan Municipality (EKU)	446
Johannesburg Metropolitan Municipality (JHB)	451
Tshwane Metropolitan Municipality (TSH)	456
19 KwaZulu-Natal Province	
Ugu District Municipality (DC21)	461
uMgungundlovu District Municipality (DC22)	466
uThukela District Municipality (DC23)	471
uMzinyathi District Municipality (DC24)	476
Amajuba District Municipality (DC25)	481
Zululand District Municipality (DC26)	486
uMkhanyakude District Municipality (DC27)	491
uThungulu District Municipality (DC28)	496
iLembe District Municipality (DC29)	501
Harry Gwala District Municipality (DC43)	506
eThekweni Metropolitan Municipality (ETH)	511

20 Limpopo Province	
Mopani District Municipality (DC33)	516
Vhembe District Municipality (DC34)	521
Capricorn District Municipality (DC35)	526
Waterberg District Municipality (DC36)	531
Sekhukhune District Municipality (DC47)	536
21 Mpumalanga Province	
Gert Sibande District Municipality (DC30)	541
Nkangala District Municipality (DC31)	546
Ehlanzeni District Municipality (DC32)	551
22 Northern Cape Province	
John Taolo Gaetsewe District Municipality (DC45)	556
Namakwa District Municipality (DC6)	561
Pixley ka Seme District Municipality (DC7)	566
ZF Mgcawu District Municipality (DC8)	571
Frances Baard District Municipality (DC9)	576
23 North West Province	
Bojanala District Municipality (DC37)	581
NM Molema District Municipality (DC38)	586
RS Mompoti District Municipality (DC39)	591
Dr Kenneth Kaunda District Municipality (DC40)	596
24 Western Cape Province	
Cape Town Metropolitan Municipality (CPT)	601
West Coast District Municipality (DC1)	606
Cape Winelands District Municipality (DC2)	611
Overberg District Municipality (DC3)	616
Eden District Municipality (DC4)	621
Central Karoo District Municipality (DC5)	626
Appendix 1:	
Definitions and sources	631

Map of 52 districts in South Africa as per 2011 demarcation, showing socio-economic quintile



South Africa

Naomi Massyn

South Africa (SA) had an estimated population of almost 53 million people in 2013 with a population density of 44 people per km². The population density, age and gender structure varied dramatically across districts in the country. Only 16.9% of people belonged to a medical aid scheme. According to Census 2011 data, the percentage of people without access to piped water within 200 metres of their homes was 16.9%.

The total provincial and local government (LG) expenditure on health in the financial year 2013/14 was R133.5 billion, up by 0.3% from the previous financial year in real terms. The provincial and local government expenditure on district health services per capita (uninsured) was R1 375 in 2013/14, with Limpopo (R1 567) having the highest expenditure and Gauteng (R1 074) had the lowest. Much more was spent on DHS per capita uninsured in deprived areas (average R1 783 in SEQ 1 compared to R1 281 in SEQ 5).

The national average for the 2013/14 year for the Provincial and LG expenditure on DHS per capita (total population) was R1 137. Limpopo (R1 431) had the highest expenditure and Gauteng (R788) had the lowest.

The provincial PHC expenditure per capita (uninsured), in real terms, was R814 in 2013/14. Provincially, the Northern Cape had the highest per capita expenditure at R1 011, while Mpumalanga had the lowest at R674.

The PHC expenditure per capita (total population) was measured at R673. The Northern Cape had the highest per capita expenditure at R856, while Mpumalanga had the lowest at R584.

The national average expenditure per PHC headcount was R276. North West (R338) had the highest average expenditure, followed by Gauteng (R335). Limpopo had the lowest estimate at R239.

The percentage of total district health services expenditure on district management was 5.5%, down from 5.8% in 2012/13. The expenditure on district management was the highest in North West (9.4%), followed by Northern Cape (8.4%) and Limpopo (7.9%). The Western Cape Province spent 4.7%, the Free State 3.1%, while KwaZulu-Natal at 1.7% had the lowest percentage expenditure on district management.

The percentage of the total district health services expenditure on district hospitals was 37.4%. At 49.2%, Limpopo Province had the highest percentage expenditure on district hospitals, followed by Mpumalanga at 44.4% and KwaZulu-Natal at 41.3%. The lowest percentage expenditure on district hospitals was in Gauteng at 20.7%.

The percentage spent on PHC services as a proportion of total expenditure on district health services has shown an annual upward trend since 2004/05 (42.8%) and was 57.1% in 2013/14. Gauteng Province had the highest percentage expenditure on PHC at 74.3%, and Limpopo had the lowest percentage at 43.0%.

The national PHC supervisor visit rate has increased marginally over the past five years from 69.3% in 2009/10 to 73.7% in 2013/14, with the highest rate of 76.0% achieved in 2012/13. Limpopo had the highest PHC supervisor visit rate at 92.8%, with Northern Cape once again having the lowest rate at 41.8%, which was well below the national average.

With regard to hospital indicators, the South African average length of stay in district hospitals was 4.7 days in 2013/14. The provincial pattern shows that KwaZulu-Natal (5.8 days) and Eastern Cape (5.3 days) had the longest ALOS being the only provinces with values greater than the national average. Of the 15 districts with the longest ALOS, 10 were in KwaZulu-Natal and five were in the Eastern Cape.

The national average for the bed utilisation rate (BUR) was 66.3% and this value has been remarkably stable for the past five years. There was great inter-provincial variation between the highest rate in the Western Cape (88.7%) and the lowest in the Eastern Cape (59.5%). The Northern Cape's BUR of 64.6% obscures the fact that it has districts with both the highest and lowest BUR.

In 2013/14, the average cost per PDE in South Africa for all district hospitals was R1 969, which is higher than the 2012/13 value of R1 926 and the 2011/12 value of R1 842. There was almost 30% difference between Limpopo, which had the highest provincial value of R2 267, and the Western Cape, which had the lowest value of R1 763.

The average national OPD new client not referred rate was 61.5%, a decrease from 64.1% in the previous year. There were no distinct provincial patterns. However, the Gauteng districts did not exceed 67.0% and the Limpopo districts in contrast did not drop below 69.5%.

The delivery rate in facility under 18 years in South Africa was on the decline but showed a marginal increase from 7.7% in 2012/13 to 7.8% in 2013/14, however, the rate was above the national target of 6.9%. Overall there were 74 070 women under the age of 18 who gave birth in South Africa in 2013/14. This was 1 166 more than in 2012/13. Provincially, the highest delivery rate in facility under 18 years for the past year was in the Northern Cape (10.2%), followed by the Eastern Cape (10.1%)

The overall delivery by Caesarean section (C-section) rate for South Africa for public sector hospitals alone was 23.9%. The highest absolute number of C-sections was at regional hospitals (84 919), followed by district hospitals (82 840), tertiary hospitals (30 180) and central hospitals (23 662), with the Caesarean section rates being 36.4%, 21.8%, 39.6% and 42.8% respectively. The highest Caesarean section rate at district hospitals was in Nelson Mandela Bay at 41.1%.

The national stillbirth rate in facility was 21.5 deaths per 1 000 total births, representing a slight decrease from the 2012/13 rate of 21.8. This was the lowest rate since 2001/02 but remained higher than the National Department of Health (NDoH) target of 19.7. The rate was lowest in the Western Cape at 17.4 per 1 000 births and highest in the Free State where there was an increase of 2.3 percentage points to 27.4 per 1 000 births.

The 2013/14 inpatient early neonatal death rate was 10.1 per 1 000 live births, a marginal decrease from 10.2 in 2012/13. This was lower than the NDoH target of 10.9. Provincially, this was lowest in the Western Cape at 4.8 and 2.9-fold higher in the Eastern Cape at 14.1. Decreases were seen in the Eastern Cape (2.3 percentage points), Mpumalanga (0.9 percentage points), North West (0.9 percentage points) and the Western Cape (1.4 percentage points).

There was a marginal increase in the maternal mortality ratio in facility (MMR) in 2013/14, from 132.9 in the previous year to 133.3 per 100 000 live births. There were 1 249 maternal deaths from 937 082 live births. Provincially, the facility MMR in the District Health Information Software (DHIS) for 2013/14 ranged from 68.6 per 100 000 live births in the Western Cape to 184.9 per 100 000 live births in the North West. Four provinces showed increases in their maternal deaths: Eastern Cape, Free State, North West and the Western Cape. In comparison, the 2010 MMR from the National Committee on Confidential Enquiries into Maternal Deaths (NCCEMD) data was 182.8 deaths per 100 000 live births; in 2011 it was 165.6, and in 2012 it was 151.7 deaths per 100 000 live births. Provincially, it was reported to be highest in Limpopo (185.8) and lowest in the Western Cape (82.0) in 2012.

A national target of 60% for antenatal 1st visit before 20 weeks rate for 2013/14 has been set in the Annual Performance Plan (APP) for 2013/14–2015/16. There has been a steady increase in the national rate by 15.5 percentage points over the last five years, from 34.5% in 2009/10 to 50.0% in 2013/14. The Western Cape, Free State, KwaZulu-Natal, Northern Cape and North West Provinces had rates above the national average of 50%; of these, only the Western Cape has achieved the target rate.

The 2012 National Antenatal Sero-prevalence Survey results showed that the HIV prevalence among antenatal clients tested was 29.5%, similar to that reported in the 2011 National Antenatal Sero-prevalence Survey. Overall, the HIV prevalence as reported in the Antenatal Survey has remained steady around 29% since 2006. KwaZulu-Natal had the highest prevalence (37.4%), followed closely by Mpumalanga (35.6%) and Free State (32.0%). Western Cape and Northern Cape had the lowest prevalence rates of 16.9% and 17.8% respectively.

The national average for the antenatal client initiated on ART rate was 76.3% with a national target rate for 2013/14 of 90%. The rate dropped to 76.3% from 81.6% in the previous year.

The National Health Laboratory Services (NHLS) showed that the national average for early infant diagnosis coverage was 88.3%. Coverage ranged from 74.8% in North West to 96.6% in Gauteng.

The percentage of early infant PCR tests that had a positive result was 2.2%, slightly lower than that reported in the previous year (2.4%). This was lower than the NDoH target of 2.5%. The rate has been below 3% over the last three years, indicating a sustained improvement in the PMTCT programme. Provincial rates ranged from 2.0% in Gauteng to 3.0% in Limpopo over the last three to five years and all provinces have shown a downward trend in early vertical transmission rates.

The immunisation coverage in the country for 2013/14 was 84.4%. The NDoH target for this indicator is 90%. The immunisation coverage differed between the provinces, ranging from 70.3% in Limpopo to 109.0% in Gauteng.

The DTaP-IPV/Hib 3 – Measles 1st dose drop-out rate for 2013/14 was 6.3%. At provincial level, the drop-out rate ranged from -1.9% in Western Cape to 18.6% in Limpopo. At district level, the range was even larger, from a low of -11.9% in Overberg (WC) to a high of 24.6% in Sekhukhune (LP). The target set by the NDoH for this indicator is less than 10%.

The child under 5 years diarrhoea with dehydration incidence declined steadily from 2009/10 until 2012/13, and then increased to 14.1 per 1 000 children under five years of age during 2013/14. This was higher than the NDoH target of 10.1 per 1 000. Substantial provincial variation in the incidence of diarrhoea with dehydration was evident; Gauteng reported the lowest incidence (8.1 per 1 000 children) whilst Free State reported the highest incidence (24.4 per 1 000 children). The incidence of diarrhoea with dehydration was slightly higher in non-metro districts as compared with metro districts, and in NHI districts as compared with non-NHI districts.

The child under 5 years diarrhoea case fatality rate has declined over the past five years. A national figure of 3.9% was reported for 2013/14, representing 1 775 deaths from diarrhoea in young children. The NDoH target is 3.8%. The Eastern Cape reported the highest case fatality rate for diarrhoea (6.9%). The Western Cape had the lowest figure with 0.2% of

children admitted with diarrhoea dying. Three districts – Overberg (WC), Central Karoo (WC) and Namakwa (NC) – reported no deaths from diarrhoea during 2013/14.

The child under 5 years pneumonia incidence increased between 2007/08 and 2009/10, but has since declined consistently with an incidence of 53.2 per 1 000 children under five years of age being reported during 2013/14. The NDoH target is less than 56.3 per 1 000. Mpumalanga reported the lowest incidence (18.5 per 1 000 children) whilst the highest incidence of 92.2 per 1 000 children was reported from KwaZulu-Natal.

The child under 5 years pneumonia case fatality rate has declined consistently over the past five years. The national rate in 2013/14 was 3.5% and in line with the national target of less than 3.4%. The Western Cape reported the lowest pneumonia case fatality rate of 0.4%.

The national average for child under 5 years severe acute malnutrition incidence was 4.5 per 1 000 children during 2013/14. The Western Cape reported the lowest incidence of 2.0 per 1 000 children, whilst the Free State reported an incidence of 9.1 per 1 000. When compared with 2012/13, the incidence increased from the previous year in four provinces (Eastern Cape, Free State, Mpumalanga and North West), remained constant in Gauteng, and decreased in the remaining four provinces (KwaZulu-Natal, Limpopo, Western Cape and Northern Cape).

The child under 5 years severe acute malnutrition case fatality rate has declined over the past five years from 19.3% in 2009/10 to 11.3% and reached the national target of less than 11.4%. The Western Cape had the lowest severe acute malnutrition case fatality rate at 2.2%, whilst Limpopo recorded the highest at 15.3%.

Vitamin A coverage in children aged 12 to 59 months has increased over the past decade but despite the consistent increase, coverage of only 44.6% was achieved during 2013/14, which was still below the national target of 60%. Substantial provincial variation is noted, with Free State and Gauteng achieving the highest coverage (54.8% and 49.9% respectively) and Mpumalanga and Limpopo having the lowest coverage (36.0% and 33.8% respectively).

The couple year protection rate in South Africa remained low, although it has increased from 26.3% in 2002/03 to 32.7% in 2012/13 and to 37.3% in 2013/14. The national couple year protection rate was above the target of 36.0%. The rate increased in all provinces from 2011/12 to 2012/13. This increase continued in 2013/14 for all provinces with the exception of the Free State, where it declined from 36.6% in 2012/13 to 34.9% in 2013/2014. The greatest increase was seen in KwaZulu-Natal, where the rate increased by 9.2 percentage points to 45.0%. This was followed by Mpumalanga (6.1 percentage point increase) and Western Cape (5.9 percentage point increase). There was a more than two-fold difference in the couple year protection rate between the Western Cape, which had the highest rate of 63.6%, and Gauteng which had the lowest rate, 25.0%, for the second consecutive year.

Overall, the cervical cancer screening coverage was 54.1%, an increase from 50.3% in 2012/13. This was lower than the NDoH target for cervical cancer screening coverage of 56%. KwaZulu-Natal remained the best performing province. All other provinces showed an increase, with the North West showing a substantial increase of 13.1 percentage points from 46.5% in 2012/13 to 59.6% in 2013/14 making it the second best performing province. The Western Cape was third at 57.2%. The Northern Cape remained the worst performing province at 31.6%.

In South Africa, the number of TB cases (all types) starting treatment and recorded in the Electronic TB register (ETR.Net) peaked in 2009 at 411 724. Since 2009, this number has decreased by almost 6% annually and 328 897 TB patients were started on treatment in 2013. The average TB (pulmonary) case finding index was 2.4%, varying from a high of 3.6% in the Eastern Cape to 1.6% in the Western Cape and Mpumalanga. The South African incidence of new pulmonary smear-positive TB was 234.2 per 100 000 in 2012. The incidence rate varied from a high of 364.9 per 100 000 in the Northern Cape to a low of 120.5 per 100 000 in Limpopo Province.

The smear conversion rate at 2 months (new pulmonary smear positive) (SCR) has been reported for the past 10 years. During this period, the national average increased from 44.6% in 2004 to 68.1% in 2010, but in 2013 declined to 66.7%. The South African National TB Control Programme target for SCR remains 85%. Across the provinces, SCRs varied from a high of 78.0% in the Free State to a low of 46.4% in the North West.

The TB cure rate (new pulmonary smear positive) continued to increase slowly and was 75.8% in 2012. The NDoH target is 80%. The cure rate varied across the provinces, with Gauteng and the Western Cape reporting cure rates of over 80%, and three provinces (the Eastern Cape, Northern Cape and North West) reporting rates of less than 70%.

The TB successful treatment rate (all TB) has continued to increase annually and was 76.1% in 2012. The NDoH target is 85%. At a provincial level, the treatment success varied from highs of 81.8% and 81.5% in Gauteng and the Western Cape respectively to lows of 64.5% and 66.4% in Limpopo and the North West respectively.

The national TB defaulter rate (new pulmonary smear-positive) in the same year was 6.2%, above the less than 5% target set by the South African National TB Control Programme. The Eastern Cape had the highest defaulter rate at 8.5%, followed by the Western Cape at 7.9%.

In 2013/14, the National Health Laboratory Service (NHLS) recorded just over 2 million Xpert tests, of which 222 793 were identified as positive for *Mycobacterium tuberculosis* (11.3%), and 15 078 of these were rifampicin-resistant (6.6%). However, for 8.4% of these tests (including 1 320 resistant cases), the district of origin could not be identified and these records were excluded from this analysis. The TB Rifampicin resistance confirmed client rate was high in all three districts in Mpumalanga, resulting in this province having the highest average percentage of rifampicin resistance (9.5%). Most of the districts with a higher proportion of rifampicin-resistant patients were in KwaZulu-Natal. uMkhanyakude, at 16.2%, had the highest proportion of rifampicin-resistant TB patients, compared to the lowest proportion (3.8%) in a number of districts in the Western Cape together with John Taolo Gaetsewe (NC) and Sekhukhune (LP).

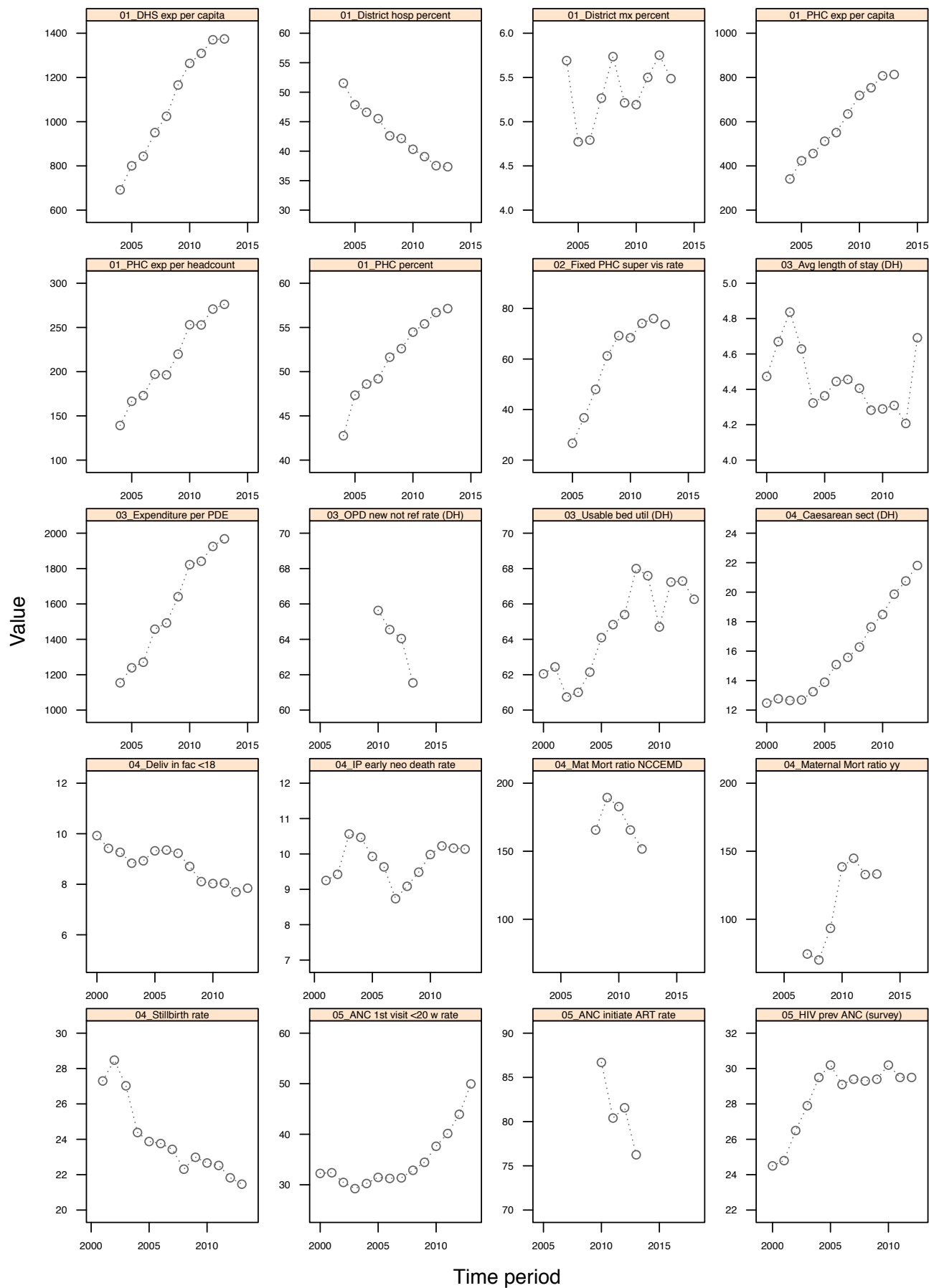
In 2013/14, a total of 506 378 224 male condoms were distributed (about half the target number) as compared with 387 460 799 male condoms distributed in 2012/13. The distribution of male condoms was highest in PHC facilities (51%) followed by non-medical sites (21%). This can be largely attributed to the HIV Counselling and Testing (HCT) campaign, which promoted service provision within specified communities as part of increasing coverage. On average, 27.9 male condoms were distributed per male 15 years and older as compared with 21.8 in 2012/13. Three provinces – Western Cape, KwaZulu-Natal and Mpumalanga – surpassed the SA average condom distribution coverage. The Western Cape performed the best with 58.6, and Northern Cape was the worst performing district with only 11.5 male condoms distributed per male 15 years and older. The NDoH target is 50 condoms.

The national HIV testing coverage was 22.8% in 2013/14, below the target of 36%. The best performing provinces were KZN and Limpopo with 33.9% and 32.9% of adults aged 15–49 years tested for HIV in 2013/14 respectively.

The percentage of TB cases with known HIV status (ETR.Net) has increased steadily since 2008, from 43.3% to 86.9% in 2013. The provincial rates varied between 77.5% in the Northern Cape to 94.6% in Western Cape. Three provinces – Western Cape, Limpopo and Gauteng – reached the national target of 90%.

The National Indicator Data Set (NIDS) includes an indicator – TB/HIV co-infected client initiated on ART rate – that tracks the percentage of TB/HIV co-infected clients who have been successfully initiated on ART, and data collection is by means of the DHIS. The quality of the DHIS data is very poor, with the Western Cape not having submitted any data and Gauteng having submitted very few data. However, the ETR.Net has data that can be compared to the DHIS data. This ETR.Net indicator (TB/HIV co-infected client on ART) measures the percentage of all HIV-positive TB patients who are on ART. Of the TB patients who started TB treatment in 2013, 66.2% of the HIV-positive TB patients were recorded to be on ART in the country, which was more than double the 31.2% of the DHIS indicator 'TB/HIV co-infected client initiated on ART rate'. The national average for HIV-positive TB patients on ART (ETR.Net) increased annually and was 28.0% in 2011, 60.6% in 2012 and 66.2% in 2013.

Figure 1: Annual indicators for South Africa



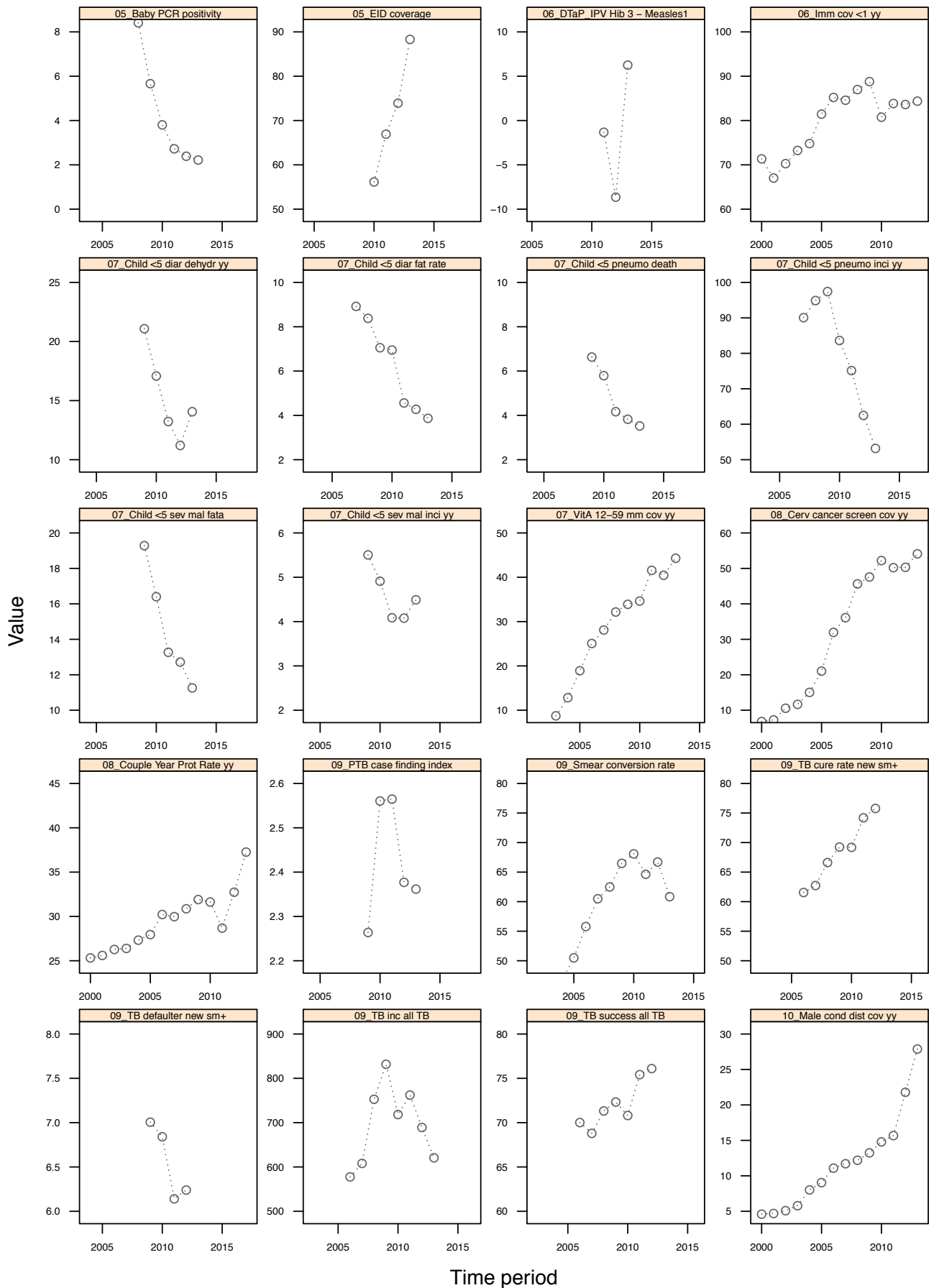
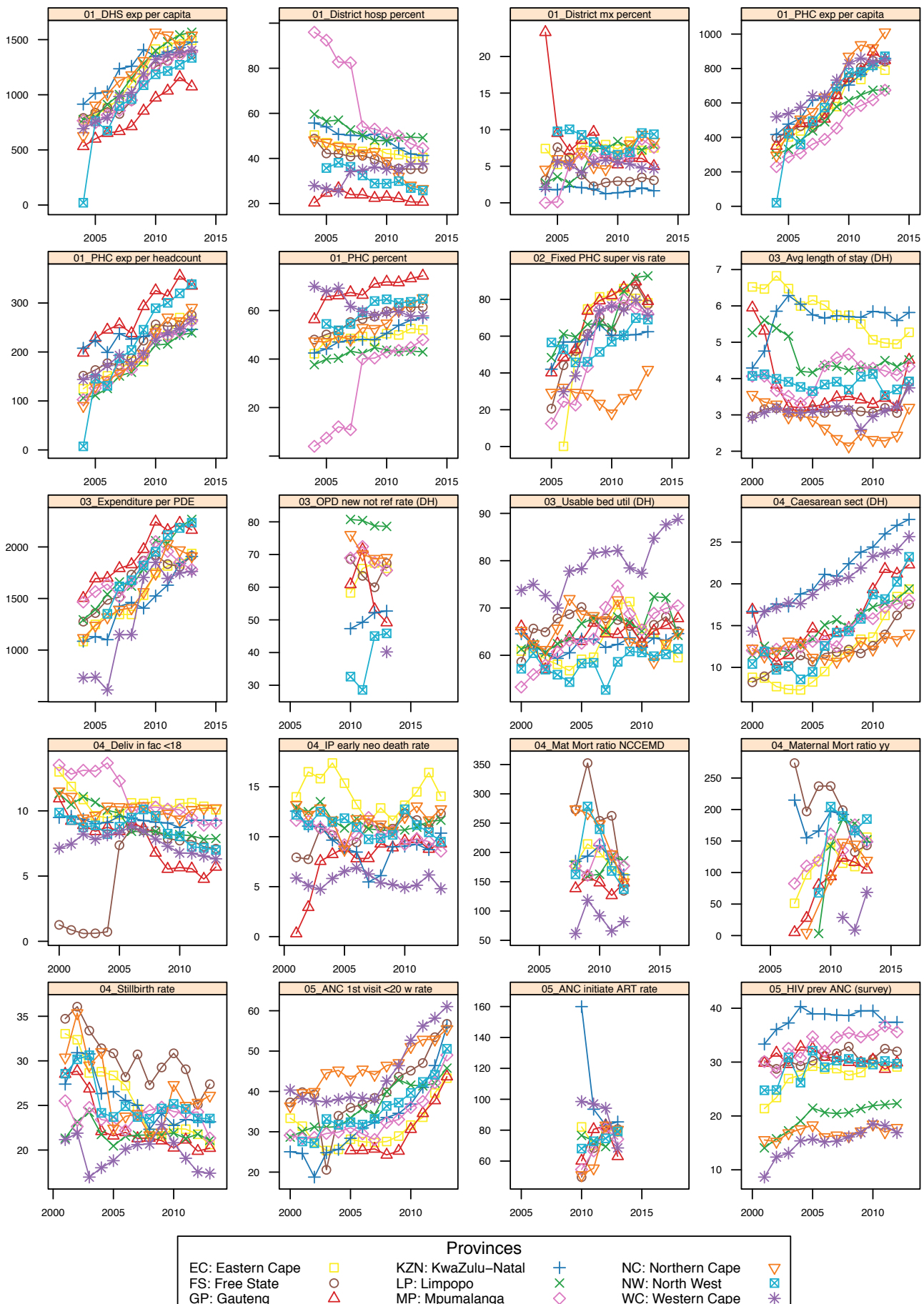
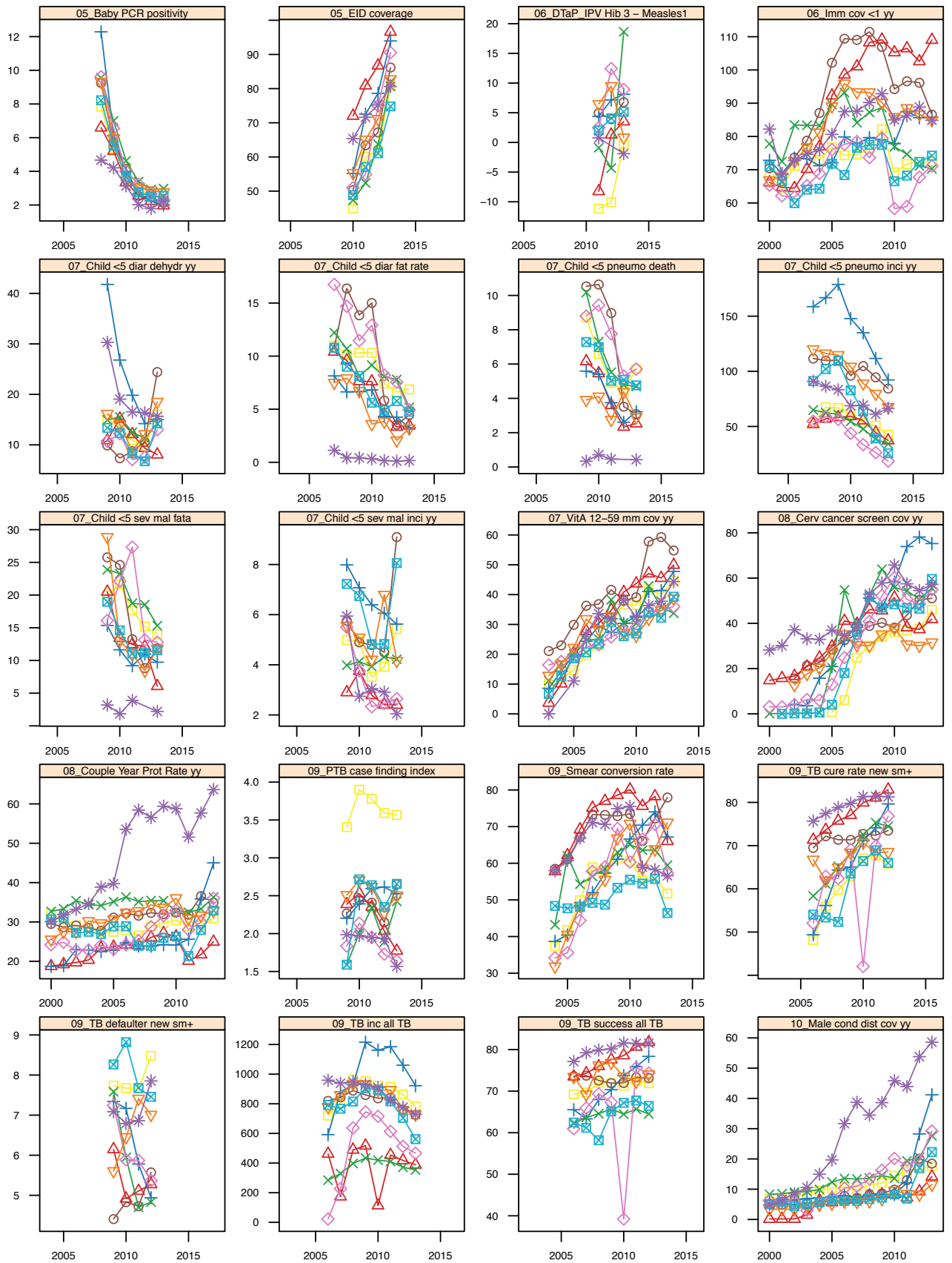


Figure 2: Annual indicators for provinces





Provinces			
EC: Eastern Cape	□	KZN: KwaZulu–Natal	+
FS: Free State	○	LP: Limpopo	x
GP: Gauteng	△	MP: Mpumalanga	◇
		NC: Northern Cape	▽
		NW: North West	⊠
		WC: Western Cape	*

Section B: Profile South Africa

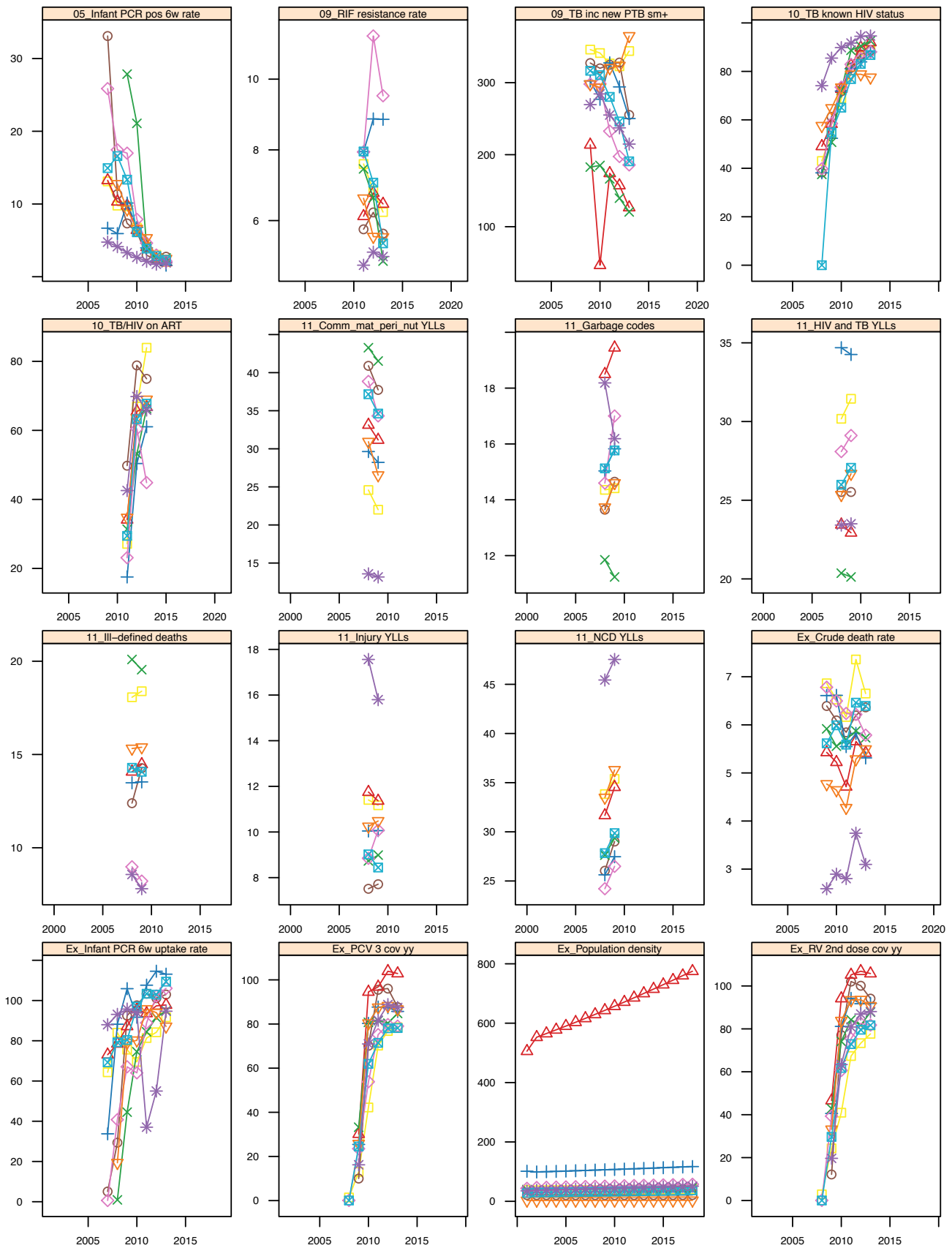


Table 1: Provincial pages

		Province page: EC, Eastern Cape						
Category	Indic	IndYear						
		2008	2009	2010	2011	2012	2013	2014
01_Finance	Percentage of DHS expenditure on district hospitals	43.1	44.8	42.2	41.7	40.3	40.4	
	Percentage of DHS expenditure on district management	7.6	8.0	7.3	8.4	7.2	7.5	
	Percentage of DHS expenditure on PHC	49.3	47.3	50.5	49.9	52.6	52.1	
	Provincial and LG expenditure on District Health Services per capita (total pop)	982.0	1,071.0	1,254.0	1,270.0	1,329.0	1,323.0	
	Provincial and LG expenditure on District Health Services per capita (uninsured)	1,107.0	1,208.0	1,415.0	1,434.0	1,501.0	1,493.0	
	Provincial PHC expenditure per capita (total pop)	490.0	513.0	662.0	653.0	727.0	700.0	
	Provincial PHC expenditure per capita (uninsured)	553.0	579.0	747.0	737.0	821.0	790.0	
	Provincial PHC expenditure per PHC headcount	180.7	180.4	244.3	234.1	270.2	266.3	
02_Managem..	PHC supervisor visit rate (fixed clinic/CHC/CDC)	74.8	81.4	81.9	85.9	80.5	78.2	
03_Management Inpatients	Average length of stay (district hospitals)	5.7	5.5	5.1	5.0	5.0	5.3	
	Expenditure per patient day equivalent (district hospitals)	1,345.0	1,532.0	1,750.0	1,816.0	1,837.0	1,936.0	
	Inpatient bed utilisation rate (district hospitals)	70.7	71.3	65.6	64.7	62.1	59.5	
04_Delivery	OPD new client not referred rate (district hospitals)			58.3	65.7	67.4	65.8	
	Caesarean section rate (district hospitals)	11.9	13.4	13.6	16.2	18.5	19.4	
	Delivery in facility under 18 years rate	10.7	10.1	10.6	10.6	10.3	10.1	
	Inpatient early neonatal death rate	12.9	11.6	13.2	14.5	16.4	14.1	
	Maternal mortality in facility ratio	96.4	117.8	147.9	114.9	109.5	156.2	
	Maternal mortality ratio institutional	179.4	214.5	199.5	176.1	156.6		
	Stillbirth rate in facility	21.9	21.6	22.4	22.3	21.8	20.6	
05_PMTCT	Antenatal 1st visit before 20 weeks rate	27.6	28.9	31.7	33.6	39.6	43.3	
	Antenatal client initiated on ART rate			82.1	70.4	80.5	79.0	
	Early infant HIV diagnosis coverage			44.9	60.0	61.8	80.8	
	HIV prevalence among antenatal clients (survey)	27.5	28.1	29.9	29.3	29.1		
	Infant 1st PCR test positive around 6 weeks rate	9.8	9.7	6.7	3.9	3.0	2.0	
	Percentage of PCR tests positive under 2 months	7.8	5.4	4.2	2.9	2.6	2.4	
06_Immunisat..	DTaP-IPV/Hib 3 - Measles 1st dose drop-out rate				-11.2	-10.1	-0.3	
	Immunisation coverage under 1 year	76.2	82.1	69.2	71.7	72.3	72.3	
07_Child Health	Child under 5 years diarrhoea with dehydration incidence		15.0	13.5	10.9	9.8	16.1	
	Child under 5 years pneumonia incidence	67.4	66.8	61.6	53.2	50.8	42.3	
	Child under 5 years severe acute malnutrition incidence		5.0	4.9	3.5	3.9	5.4	
	Vitamin A coverage 12 to 59 months	31.6	36.6	36.5	41.8	40.1	44.7	
07_Child Mortality	Child under 5 years diarrhoea case fatality rate	10.2	10.3	10.3	7.4	6.6	6.9	
	Child under 5 years pneumonia case fatality rate		8.7	6.6	4.9	4.4	5.7	
	Child under 5 years severe acute malnutrition case fatality rate		20.0	21.7	17.7	15.2	14.0	
08_Reproductive health	Cervical cancer screening coverage (annualised)	30.1	34.0	36.2	36.9	37.6	46.0	
	Couple year protection rate (annualised)	28.8	29.7	30.4	28.9	29.1	30.9	
09_TB_CF	Incidence (diagnosed cases) of TB - all types	963.0	953.0	922.0	914.0	863.0	782.0	
	Incidence (diagnosed cases) of TB - new PTB sm+		345.9	341.1	326.7	322.7	343.9	
	Number of TB cases reported (all TB)		63,425.0	61,395.0	59,883.0	56,819.0	51,783.0	
	Number of TB cases reported (new sm+)		23,000.0	22,706.0	21,409.0	21,256.0	22,768.0	
	TB (pulmonary) case finding index		3.4	3.9	3.8	3.6	3.6	
	TB Rifampicin resistance confirmed client rate				7.6	6.9	6.2	
09_TB_TO	Smear conversion rate at 2 months (new sm+)	58.1	61.2	60.6	55.3	56.0	51.7	
	TB cure rate (new sm+)	59.7	62.9	67.0	67.7	65.8		
	TB defaulter rate (new sm+)		7.7	7.7	7.7	8.5		
	TB treatment success rate (all TB)	72.0	71.9	71.3	72.5	71.9		
10_HIV	Adult remaining on ART at end of the month - total				148,997.0	176,590.0	221,212.0	271,719.0
	Child under 15 years remaining on ART at end of the month - total				9,729.0	11,954.0	15,741.0	17,236.0
	HIV testing coverage (annualised)						27.0	
	Male condom distribution coverage	11.2	12.1	14.5	15.8	16.6	17.6	
	Percentage of TB cases with known HIV status	43.0	54.6	68.8	80.4	86.3	88.5	
	TB/HIV co-infected client on ART rate				27.1	66.9	84.0	
12_Socio-de..	Adults (18-65) with no secondary schooling				29.4			
	Medical scheme coverage (ave)		11.4					
	Percentage of people without piped water in dwelling or within 200m				36.6			
	South African Index of Multiple Deprivation Rank (1=most deprived)				2.0			
Extra	Area (km2)				168,966.0			
	Caesarean section rate (all)	20.5	22.3	24.3	25.0	25.4	26.3	
	Infant 1st PCR test around 6 weeks uptake rate	84.0	75.6	69.5	81.4	84.2	91.7	
	Live birth occurrences registered	139,386.0	125,053.0	119,627.0	119,683.0	110,244.0		
	Population density	38.2	38.4	38.6	38.8	39.0	39.4	
	Population total (Census)				6,562,053.0			
	Population total (DHIS)	6,460,410.0	6,490,692.0	6,521,855.0	6,553,889.0	6,586,307.0	6,620,137.0	6,655,658.0
	Population under 1 year (Census)				145,067.0			
	Population under 1 year (DHIS)	175,483.0	170,380.0	161,786.0	153,425.0	148,979.0	145,702.0	141,857.0
	Tracer items stock-out rate (fixed clinic/CHC/CDC)				8.9	15.5	18.9	

Section B: Profile South Africa

Province page: FS, Free State

Category	Indic	IndYear						
		2008	2009	2010	2011	2012	2013	2014
01_Finance	Percentage of DHS expenditure on district hospitals	41.2	39.7	37.3	35.5	35.2	35.4	
	Percentage of DHS expenditure on district management	2.3	2.8	3.0	2.9	3.5	3.1	
	Percentage of DHS expenditure on PHC	56.5	57.6	59.7	61.6	61.3	61.5	
	Provincial and LG expenditure on District Health Services per capita (total pop)	778.0	928.0	1,031.0	1,074.0	1,129.0	1,119.0	
	Provincial and LG expenditure on District Health Services per capita (uninsured)	945.0	1,128.0	1,255.0	1,308.0	1,377.0	1,366.0	
	Provincial PHC expenditure per capita (total pop)	443.0	534.0	617.0	662.0	693.0	690.0	
	Provincial PHC expenditure per capita (uninsured)	538.0	649.0	751.0	806.0	846.0	842.0	
	Provincial PHC expenditure per PHC headcount	187.5	223.3	256.4	252.5	254.5	275.5	
02_Managem..	PHC supervisor visit rate (fixed clinic/CHC/CDC)	61.3	70.4	62.3	75.9	88.2	77.2	
03_Management Inpatients	Average length of stay (district hospitals)	3.1	3.1	3.1	3.2	3.1	3.9	
	Expenditure per patient day equivalent (district hospitals)	1,732.0	1,868.0	1,921.0	1,834.0	1,809.0	1,914.0	
	Inpatient bed utilisation rate (district hospitals)	67.5	66.2	62.6	66.5	68.2	65.1	
	OPD new client not referred rate (district hospitals)			68.6	63.5	60.0	67.4	
04_Delivery	Caesarean section rate (district hospitals)	12.1	11.7	12.6	13.9	16.2	17.6	
	Delivery in facility under 18 years rate	8.5	7.9	7.7	7.7	7.3	7.1	
	Inpatient early neonatal death rate	10.9	10.8	12.4	11.7	10.8	12.3	
	Maternal mortality in facility ratio	197.1	237.2	237.2	199.1	132.7	143.4	
	Maternal mortality ratio institutional	273.2	352.7	254.2	262.7	134.7		
	Stillbirth rate in facility	27.3	29.3	30.9	29.1	25.1	27.4	
05_PMTCT	Antenatal 1st visit before 20 weeks rate	39.8	43.7	45.2	47.1	53.5	56.8	
	Antenatal client initiated on ART rate			49.6	68.4	82.1	80.8	
	Early infant HIV diagnosis coverage			50.3	63.4	67.2	86.2	
	HIV prevalence among antenatal clients (survey)	32.9	30.1	30.6	32.5	32.0		
	Infant 1st PCR test positive around 6 weeks rate	11.4	7.3	6.2	3.0	2.3	2.8	
	Percentage of PCR tests positive under 2 months	9.2	5.7	4.1	2.6	2.5	2.1	
06_Immunisat..	DTaP-IPV/Hib 3 - Measles 1st dose drop-out rate				5.0	3.9	6.8	
	Immunisation coverage under 1 year	111.5	107.0	94.3	96.6	96.2	86.6	
07_Child Health	Child under 5 years diarrhoea with dehydration incidence		9.9	7.4	8.8	10.6	24.4	
	Child under 5 years pneumonia incidence	109.8	110.0	96.1	104.8	94.6	84.4	
	Child under 5 years severe acute malnutrition incidence		5.8	4.9	4.8	4.5	9.1	
	Vitamin A coverage 12 to 59 months	41.6	38.0	39.1	57.8	59.3	54.8	
07_Child Mortality	Child under 5 years diarrhoea case fatality rate	16.4	13.9	15.0	5.8	3.6	4.5	
	Child under 5 years pneumonia case fatality rate		10.5	10.6	9.0	3.5	3.1	
	Child under 5 years severe acute malnutrition case fatality rate		25.8	24.6	13.3	8.8	11.9	
08_Reproductive health	Cervical cancer screening coverage (annualised)	38.9	40.3	38.1	43.6	50.3	51.1	
	Couple year protection rate (annualised)	32.3	32.0	32.4	31.9	36.6	34.9	
09_TB_CF	Incidence (diagnosed cases) of TB - all types	890.0	860.0	837.0	842.0	761.0	724.0	
	Incidence (diagnosed cases) of TB - new PTB sm+		327.3	320.0	325.0	328.0	255.3	
	Number of TB cases reported (all TB)		24,954.0	24,430.0	23,092.0	20,906.0	19,937.0	
	Number of TB cases reported (new sm+)		9,500.0	9,337.0	8,918.0	9,016.0	7,030.0	
	TB (pulmonary) case finding index		2.3	2.4	2.4	2.2	2.7	
	TB Rifampicin resistance confirmed client rate				5.8	6.2	5.6	
09_TB_TO	Smear conversion rate at 2 months (new sm+)	73.2	72.9	73.5	66.1	72.3	78.0	
	TB cure rate (new sm+)	71.4	71.3	72.7	72.4	73.5		
	TB defaulter rate (new sm+)		4.4	4.8	4.7	5.6		
	TB treatment success rate (all TB)	72.6	71.9	72.0	73.3	73.2		
10_HIV	Adult remaining on ART at end of the month - total				6,253.0	19,833.0	136,248.0	
	Child under 15 years remaining on ART at end of the month - total				227.0	1,410.0	8,729.0	
	HIV testing coverage (annualised)						29.0	
	Male condom distribution coverage	8.3	8.6	9.9	13.0	20.1	18.5	
	Percentage of TB cases with known HIV status	38.3	61.3	71.8	81.5	87.1	88.6	
	TB/HIV co-infected client on ART rate				49.8	78.8	74.9	
12_Socio-de..	Adults (18-65) with no secondary schooling				24.4			
	Medical scheme coverage (ave)		18.0					
	Percentage of people without piped water in dwelling or within 200m				4.6			
	South African Index of Multiple Deprivation Rank (1=most deprived)				7.0			
Extra	Area (km2)				129,825.0			
	Caesarean section rate (all)	18.2	18.7	20.8	22.5	24.8	25.5	
	Infant 1st PCR test around 6 weeks uptake rate	29.4	92.5	97.6	103.4	101.2	103.0	
	Live birth occurrences registered	58,229.0	54,008.0	54,120.0	52,735.0	50,950.0		
	Population density	21.1	21.1	21.1	21.1	21.2	21.2	21.2
	Population total (Census)				2,745,590.0			
	Population total (DHIS)	2,734,529.0	2,737,389.0	2,740,459.0	2,744,120.0	2,748,506.0	2,753,142.0	2,757,924.0
	Population under 1 year (Census)				58,976.0			
	Population under 1 year (DHIS)	46,431.0	48,224.0	50,909.0	53,082.0	53,842.0	53,053.0	50,249.0
	Tracer items stock-out rate (fixed clinic/CHC/CDC)				12.3	13.5	31.9	

Province page: GP, Gauteng

Category	Indic	IndYear						
		2008	2009	2010	2011	2012	2013	2014
01_Finance	Percentage of DHS expenditure on district hospitals	23.9	22.4	22.9	22.3	20.7	20.7	
	Percentage of DHS expenditure on district management	9.7	6.6	5.2	6.1	6.1	5.0	
	Percentage of DHS expenditure on PHC	66.4	71.0	71.8	71.6	73.2	74.3	
	Provincial and LG expenditure on District Health Services per capita (total pop)	524.0	627.0	714.0	761.0	851.0	788.0	
	Provincial and LG expenditure on District Health Services per capita (uninsured)	713.0	854.0	973.0	1,036.0	1,159.0	1,074.0	
	Provincial PHC expenditure per capita (total pop)	373.0	473.0	545.0	574.0	658.0	622.0	
	Provincial PHC expenditure per capita (uninsured)	508.0	644.0	743.0	783.0	897.0	848.0	
	Provincial PHC expenditure per PHC headcount	238.1	293.2	325.6	314.1	355.5	335.0	
02_Managem..	PHC supervisor visit rate (fixed clinic/CHC/CDC)	73.7	79.3	82.2	86.2	89.7	79.0	
03_Management Inpatients	Average length of stay (district hospitals)	3.5	3.4	3.3	3.5	3.2	4.5	
	Expenditure per patient day equivalent (district hospitals)	1,830.0	1,977.0	2,244.0	2,162.0	2,232.0	2,164.0	
	Inpatient bed utilisation rate (district hospitals)	64.4	66.5	62.6	65.2	66.3	67.8	
	OPD new client not referred rate (district hospitals)			60.9	71.5	53.2	49.2	
04_Delivery	Caesarean section rate (district hospitals)	14.7	16.2	19.3	21.8	21.2	22.3	
	Delivery in facility under 18 years rate	6.8	5.5	5.7	5.6	4.8	5.7	
	Inpatient early neonatal death rate	9.3	8.9	9.6	9.7	8.8	9.3	
	Maternal mortality in facility ratio	27.8	80.0	93.8	123.3	116.5	104.5	
	Maternal mortality ratio institutional	138.6	158.4	148.6	126.8	148.3		
	Stillbirth rate in facility	21.4	21.1	20.3	21.2	19.9	20.2	
05_PMTCT	Antenatal 1st visit before 20 weeks rate	24.3	25.2	30.6	34.6	37.8	43.7	
	Antenatal client initiated on ART rate			60.1	80.5	83.0	63.1	
	Early infant HIV diagnosis coverage			72.0	80.9	86.7	96.6	
	HIV prevalence among antenatal clients (survey)	30.0	29.8	30.4	28.7	29.9		
	Infant 1st PCR test positive around 6 weeks rate	10.3	9.8	6.4	4.1	2.4	2.0	
	Percentage of PCR tests positive under 2 months	6.6	5.2	3.4	2.6	2.2	2.0	
06_Immunisat..	DTaP-IPV/Hib 3 - Measles 1st dose drop-out rate				-8.2	1.3	3.5	
	Immunisation coverage under 1 year	108.3	109.1	105.3	106.5	102.6	109.0	
07_Child Health	Child under 5 years diarrhoea with dehydration incidence		10.9	15.2	12.1	9.4	8.1	
	Child under 5 years pneumonia incidence	56.9	58.3	59.3	55.4	44.5	37.3	
	Child under 5 years severe acute malnutrition incidence		2.9	3.8	2.8	2.4	2.4	
	Vitamin A coverage 12 to 59 months	34.8	40.8	43.7	47.1	45.6	49.9	
07_Child Mortality	Child under 5 years diarrhoea case fatality rate	9.6	7.6	7.6	4.5	3.3	3.5	
	Child under 5 years pneumonia case fatality rate		6.2	5.5	3.6	2.3	2.5	
	Child under 5 years severe acute malnutrition case fatality rate		20.5	13.4	12.5	12.1	6.1	
08_Reproductive health	Cervical cancer screening coverage (annualised)	46.1	45.6	51.4	38.2	37.4	41.8	
	Couple year protection rate (annualised)	26.1	27.1	26.3	20.1	21.7	25.0	
09_TB_CF	Incidence (diagnosed cases) of TB - all types	489.0	517.0	114.0	454.0	418.0	388.0	
	Incidence (diagnosed cases) of TB - new PTB sm+		213.7	46.5	174.1	157.2	126.7	
	Number of TB cases reported (all TB)		55,781.0	12,471.0	55,416.0	52,120.0	49,416.0	
	Number of TB cases reported (new sm+)		23,022.0	5,105.0	21,250.0	19,597.0	16,122.0	
	TB (pulmonary) case finding index		2.4	2.5	2.4	2.0	1.8	
	TB Rifampicin resistance confirmed client rate				6.1	6.8	6.5	
09_TB_TO	Smear conversion rate at 2 months (new sm+)	77.0	78.6	80.1	75.6	78.3	66.0	
	TB cure rate (new sm+)	75.7	77.1	79.9	81.1	83.0		
	TB defaulter rate (new sm+)		6.1	4.9	5.1	5.3		
	TB treatment success rate (all TB)	76.0	77.6	78.6	80.7	81.8		
10_HIV	Adult remaining on ART at end of the month - total				115,310.0	246,295.0	505,644.0	559,363.0
	Child under 15 years remaining on ART at end of the month - total				891.0	5,818.0	28,564.0	28,209.0
	HIV testing coverage (annualised)						12.7	
	Male condom distribution coverage	7.8	8.2	8.3	7.2	9.3	14.2	
	Percentage of TB cases with known HIV status	49.1	58.3	72.7	82.5	89.8	92.0	
	TB/HIV co-infected client on ART rate				34.1	65.5	66.7	
12_Socio-de..	Adults (18-65) with no secondary schooling				12.9			
	Medical scheme coverage (ave)		26.6					
	Percentage of people without piped water in dwelling or within 200m				3.9			
	South African Index of Multiple Deprivation Rank (1=most deprived)				9.0			
Extra	Area (km2)				18,178.0			
	Caesarean section rate (all)	19.6	20.8	23.0	24.3	24.6	25.6	
	Infant 1st PCR test around 6 weeks uptake rate	78.5	87.2	95.6	93.6	97.3	97.8	
	Live birth occurrences registered	202,204.0	195,231.0	195,347.0	194,039.0	186,457.0		
	Population density	629.6	643.3	657.2	671.3	685.6	700.2	714.9
	Population total (Census)				#####			
	Population total (DHIS)	#####	#####	#####	#####	#####	#####	#####
	Population under 1 year (Census)				255,863.0			
	Population under 1 year (DHIS)	179,808.0	187,770.0	199,172.0	208,527.0	210,820.0	211,083.0	207,511.0
	Tracer items stock-out rate (fixed clinic/CHC/CDC)				20.4	22.6	14.8	

Section B: Profile South Africa

Province page: KZN, KwaZulu-Natal

Category	Indic	IndYear						
		2008	2009	2010	2011	2012	2013	2014
01_Finance	Percentage of DHS expenditure on district hospitals	50.0	50.8	48.0	44.5	42.0	41.3	
	Percentage of DHS expenditure on district management	1.9	1.2	1.4	1.6	2.0	1.7	
	Percentage of DHS expenditure on PHC	48.1	48.0	50.6	53.9	56.0	57.0	
	Provincial and LG expenditure on District Health Services per capita (total pop)	1,100.0	1,230.0	1,178.0	1,212.0	1,249.0	1,292.0	
	Provincial and LG expenditure on District Health Services per capita (uninsured)	1,259.0	1,408.0	1,348.0	1,387.0	1,429.0	1,478.0	
	Provincial PHC expenditure per capita (total pop)	552.0	602.0	615.0	671.0	714.0	750.0	
	Provincial PHC expenditure per capita (uninsured)	632.0	689.0	704.0	768.0	817.0	859.0	
	Provincial PHC expenditure per PHC headcount	226.3	231.8	236.6	235.0	237.5	246.1	
02_Managem..	PHC supervisor visit rate (fixed clinic/CHC/CDC)	58.1	66.2	60.4	60.5	60.8	62.4	
03_Management Inpatients	Average length of stay (district hospitals)	5.7	5.7	5.9	5.8	5.6	5.8	
	Expenditure per patient day equivalent (district hospitals)	1,461.0	1,406.0	1,525.0	1,629.0	1,840.0	1,908.0	
	Inpatient bed utilisation rate (district hospitals)	62.3	63.7	61.7	63.7	63.2	64.6	
	OPD new client not referred rate (district hospitals)			47.3	49.3	52.2	52.7	
04_Delivery	Caesarean section rate (district hospitals)	22.4	23.8	24.4	26.0	27.0	27.7	
	Delivery in facility under 18 years rate	9.1	9.1	8.7	9.3	9.3	9.3	
	Inpatient early neonatal death rate	6.1	9.0	9.0	9.2	8.7	10.4	
	Maternal mortality in facility ratio	155.1	166.0	196.9	192.2	165.5	148.4	
	Maternal mortality ratio institutional	185.1	193.7	211.5	189.0	161.8		
	Stillbirth rate in facility	22.3	24.1	22.8	23.4	23.3	23.2	
05_PMTCT	Antenatal 1st visit before 20 weeks rate	33.5	34.6	36.9	41.0	46.4	56.2	
	Antenatal client initiated on ART rate			160.0	93.6	83.2	85.4	
	Early infant HIV diagnosis coverage			55.2	72.5	78.6	93.9	
	HIV prevalence among antenatal clients (survey)	38.7	39.5	39.5	37.4	37.4		
	Infant 1st PCR test positive around 6 weeks rate	5.9	10.1	6.8	4.0	2.2	1.6	
	Percentage of PCR tests positive under 2 months	12.3	6.1	4.0	2.7	2.3	2.0	
06_Immunisat..	DTaP-IPV/Hib 3 - Measles 1st dose drop-out rate				4.4	7.2	8.1	
	Immunisation coverage under 1 year	79.7	79.0	77.8	87.5	85.6	85.8	
07_Child Health	Child under 5 years diarrhoea with dehydration incidence		41.8	26.8	19.8	14.2	15.0	
	Child under 5 years pneumonia incidence	166.7	178.8	147.8	134.9	111.7	92.2	
	Child under 5 years severe acute malnutrition incidence		8.0	7.1	6.4	6.1	5.6	
	Vitamin A coverage 12 to 59 months	27.3	30.3	32.8	41.1	41.4	47.8	
07_Child Mortality	Child under 5 years diarrhoea case fatality rate	6.6	6.7	6.8	4.3	4.3	3.3	
	Child under 5 years pneumonia case fatality rate		5.6	5.4	3.8	2.6	3.2	
	Child under 5 years severe acute malnutrition case fatality rate		15.4	11.6	9.2	11.0	9.7	
08_Reproductive health	Cervical cancer screening coverage (annualised)	51.1	47.0	58.2	73.9	78.2	75.3	
	Couple year protection rate (annualised)	23.8	24.2	24.2	25.6	35.8	45.0	
09_TB_CF	Incidence (diagnosed cases) of TB - all types	928.0	1,215.0	1,162.0	1,185.0	1,060.0	922.0	
	Incidence (diagnosed cases) of TB - new PTB sm+		302.3	276.9	327.5	294.1	250.2	
	Number of TB cases reported (all TB)		127,008.0	122,457.0	121,328.0	109,708.0	96,414.0	
	Number of TB cases reported (new sm+)		31,589.0	29,191.0	33,523.0	30,429.0	26,165.0	
	TB (pulmonary) case finding index		2.2	2.4	2.6	2.6	2.5	
	TB Rifampicin resistance confirmed client rate				7.9	8.9	8.9	
09_TB_TO	Smear conversion rate at 2 months (new sm+)	57.3	61.1	66.6	70.4	74.0	67.2	
	TB cure rate (new sm+)	64.3	65.0	71.1	74.1	79.6		
	TB defaulter rate (new sm+)		7.3	7.2	5.8	4.9		
	TB treatment success rate (all TB)	68.0	70.4	73.7	75.9	78.4		
10_HIV	Adult remaining on ART at end of the month - total				410,885.0	514,752.0	672,544.0	788,184.0
	Child under 15 years remaining on ART at end of the month - total				37,813.0	45,032.0	53,794.0	52,554.0
	HIV testing coverage (annualised)						33.9	
	Male condom distribution coverage	8.2	8.2	8.2	12.1	28.3	41.2	
	Percentage of TB cases with known HIV status	38.1	52.4	71.9	81.1	83.9	88.1	
	TB/HIV co-infected client on ART rate				17.5	50.4	61.0	
12_Socio-de..	Adults (18-65) with no secondary schooling				24.0			
	Medical scheme coverage (ave)		12.5					
	Percentage of people without piped water in dwelling or within 200m				25.1			
	South African Index of Multiple Deprivation Rank (1=most deprived)				1.0			
Extra	Area (km2)				94,361.0			
	Caesarean section rate (all)	24.8	25.8	26.9	28.6	29.2	29.9	
	Infant 1st PCR test around 6 weeks uptake rate	88.2	105.9	91.7	107.6	114.6	113.1	
	Live birth occurrences registered	236,188.0	217,127.0	211,800.0	205,724.0	185,764.0		
	Population density	105.1	106.2	107.3	108.5	109.6	110.8	112.0
	Population total (Census)				#####			
	Population total (DHIS)	9,918,332.0	#####	#####	#####	#####	#####	#####
	Population under 1 year (Census)				237,444.0			
	Population under 1 year (DHIS)	248,218.0	246,727.0	243,754.0	240,204.0	237,797.0	236,097.0	232,455.0
	Tracer items stock-out rate (fixed clinic/CHC/CDC)				3.1	4.9	6.5	

Province page: LP, Limpopo

Category	Indic	IndYear						
		2008	2009	2010	2011	2012	2013	2014
01_Finance	Percentage of DHS expenditure on district hospitals	50.2	47.9	47.9	49.3	49.4	49.2	
	Percentage of DHS expenditure on district management	7.5	7.3	8.4	7.5	7.2	7.9	
	Percentage of DHS expenditure on PHC	42.3	44.8	43.7	43.1	43.3	43.0	
	Provincial and LG expenditure on District Health Services per capita (total pop)	1,052.0	1,173.0	1,277.0	1,352.0	1,409.0	1,431.0	
	Provincial and LG expenditure on District Health Services per capita (uninsured)	1,151.0	1,284.0	1,399.0	1,481.0	1,543.0	1,567.0	
	Provincial PHC expenditure per capita (total pop)	448.0	529.0	560.0	590.0	615.0	617.0	
	Provincial PHC expenditure per capita (uninsured)	490.0	579.0	613.0	646.0	674.0	676.0	
	Provincial PHC expenditure per PHC headcount	158.6	183.6	213.9	216.4	234.1	238.9	
02_Managem..	PHC supervisor visit rate (fixed clinic/CHC/CDC)	66.4	66.9	64.6	84.5	91.9	92.8	
03_Management Inpatients	Average length of stay (district hospitals)	4.2	4.3	4.3	4.5	4.3	4.5	
	Expenditure per patient day equivalent (district hospitals)	1,620.0	1,786.0	2,060.0	2,036.0	2,191.0	2,267.0	
	Inpatient bed utilisation rate (district hospitals)	68.1	66.9	65.2	72.4	72.2	64.2	
	OPD new client not referred rate (district hospitals)			80.7	80.4	78.8	78.6	
04_Delivery	Caesarean section rate (district hospitals)	14.8	16.5	17.2	17.7	18.1	19.4	
	Delivery in facility under 18 years rate	8.4	8.2	8.2	8.1	7.8	7.9	
	Inpatient early neonatal death rate	10.7	10.7	10.7	11.0	11.5	11.7	
	Maternal mortality in facility ratio		3.3	142.1	184.6	177.9	152.0	
	Maternal mortality ratio institutional	176.9	160.3	162.8	194.0	185.8		
	Stillbirth rate in facility	21.7	21.7	21.9	21.3	21.8	21.1	
05_PMTCT	Antenatal 1st visit before 20 weeks rate	40.0	42.9	41.6	41.3	42.0	45.8	
	Antenatal client initiated on ART rate			76.6	73.1	69.4	78.6	
	Early infant HIV diagnosis coverage			47.4	52.4	63.8	82.0	
	HIV prevalence among antenatal clients (survey)	20.6	21.4	21.9	22.1	22.3		
	Infant 1st PCR test positive around 6 weeks rate		27.9	21.1	4.2	2.4	2.6	
	Percentage of PCR tests positive under 2 months	9.6	7.0	4.6	3.4	2.9	3.0	
06_Immunisat..	DTaP-IPV/Hib 3 - Measles 1st dose drop-out rate				-0.9	-4.3	18.6	
	Immunisation coverage under 1 year	87.3	88.7	76.9	74.7	71.1	70.3	
07_Child Health	Child under 5 years diarrhoea with dehydration incidence		14.9	15.5	12.5	11.3	14.2	
	Child under 5 years pneumonia incidence	62.6	60.9	54.6	47.7	38.5	34.2	
	Child under 5 years severe acute malnutrition incidence		4.0	4.1	3.9	4.3	4.2	
	Vitamin A coverage 12 to 59 months	38.3	30.6	30.3	42.9	35.8	33.8	
07_Child Mortality	Child under 5 years diarrhoea case fatality rate	10.7	8.1	9.2	8.1	7.8	5.2	
	Child under 5 years pneumonia case fatality rate		10.2	7.3	5.5	4.8	4.7	
	Child under 5 years severe acute malnutrition case fatality rate		23.9	23.3	18.7	18.5	15.3	
08_Reproductive health	Cervical cancer screening coverage (annualised)	52.5	63.9	55.9	54.3	50.7	55.5	
	Couple year protection rate (annualised)	35.4	35.4	32.7	32.4	33.3	36.3	
09_TB_CF	Incidence (diagnosed cases) of TB - all types	397.0	433.0	420.0	411.0	372.0	354.0	
	Incidence (diagnosed cases) of TB - new PTB sm+		182.7	185.0	166.5	139.6	120.5	
	Number of TB cases reported (all TB)		22,660.0	22,034.0	22,121.0	20,272.0	19,513.0	
	Number of TB cases reported (new sm+)		9,553.0	9,711.0	8,971.0	7,611.0	6,650.0	
	TB (pulmonary) case finding index		1.6	2.0	2.3	1.9	2.4	
	TB Rifampicin resistance confirmed client rate				7.5	6.6	4.9	
09_TB_TO	Smear conversion rate at 2 months (new sm+)	58.5	63.0	65.1	63.6	63.6	59.5	
	TB cure rate (new sm+)	65.2	68.0	72.6	75.3	74.5		
	TB defaulter rate (new sm+)		7.6	5.9	4.7	4.8		
	TB treatment success rate (all TB)	64.6	65.7	64.5	65.7	64.5		
10_HIV	Adult remaining on ART at end of the month - total				70,912.0	113,821.0	149,102.0	177,239.0
	Child under 15 years remaining on ART at end of the month - total				5,672.0	7,989.0	10,329.0	11,763.0
	HIV testing coverage (annualised)						32.9	
	Male condom distribution coverage	13.6	14.6	13.6	19.3	20.5	27.7	
	Percentage of TB cases with known HIV status	37.5	50.8	72.2	88.7	90.4	92.6	
	TB/HIV co-infected client on ART rate				31.4	53.2	66.3	
12_Socio-de..	Adults (18-65) with no secondary schooling				25.1			
	Medical scheme coverage (ave)		8.7					
	Percentage of people without piped water in dwelling or within 200m				27.9			
	South African Index of Multiple Deprivation Rank (1=most deprived)				3.0			
Extra	Area (km2)				125,755.0			
	Caesarean section rate (all)	13.8	14.7	14.6	14.9	15.4	16.5	
	Infant 1st PCR test around 6 weeks uptake rate	0.9	44.5	74.5	84.4	91.5	94.9	
	Live birth occurrences registered	126,124.0	119,310.0	121,499.0	125,580.0	118,439.0		
	Population density	41.4	41.8	42.3	42.8	43.4	43.9	44.4
	Population total (Census)				5,404,868.0			
	Population total (DHIS)	5,201,121.0	5,262,244.0	5,324,555.0	5,388,120.0	5,452,206.0	5,517,968.0	5,585,234.0
	Population under 1 year (Census)				141,124.0			
	Population under 1 year (DHIS)	125,264.0	128,959.0	132,582.0	135,433.0	138,536.0	138,452.0	133,889.0
	Tracer items stock-out rate (fixed clinic/CHC/CDC)				14.1	33.3	34.6	

Section B: Profile South Africa

Province page: MP, Mpumalanga

Category	Indic	IndYear						
		2008	2009	2010	2011	2012	2013	2014
01_Finance	Percentage of DHS expenditure on district hospitals	54.0	53.0	51.3	50.0	46.6	44.4	
	Percentage of DHS expenditure on district management	5.9	6.6	5.8	6.5	8.7	7.6	
	Percentage of DHS expenditure on PHC	40.1	40.4	42.9	43.6	44.7	48.0	
	Provincial and LG expenditure on District Health Services per capita (total pop)	824.0	972.0	1,098.0	1,141.0	1,175.0	1,205.0	
	Provincial and LG expenditure on District Health Services per capita (uninsured)	951.0	1,121.0	1,267.0	1,317.0	1,356.0	1,390.0	
	Provincial PHC expenditure per capita (total pop)	337.0	393.0	482.0	507.0	535.0	584.0	
	Provincial PHC expenditure per capita (uninsured)	389.0	454.0	556.0	585.0	618.0	674.0	
	Provincial PHC expenditure per PHC headcount	164.5	192.8	238.1	232.4	240.8	263.2	
02_Managem..	PHC supervisor visit rate (fixed clinic/CHC/CDC)	43.4	74.4	75.8	79.7	75.1	72.1	
03_Management Inpatients	Average length of stay (district hospitals)	4.7	4.3	4.3	4.2	4.1	4.3	
	Expenditure per patient day equivalent (district hospitals)	1,653.0	1,851.0	2,052.0	1,956.0	1,851.0	1,782.0	
	Inpatient bed utilisation rate (district hospitals)	74.7	68.7	65.4	68.9	69.9	70.5	
	OPD new client not referred rate (district hospitals)			68.9	72.4	67.6	65.2	
04_Delivery	Caesarean section rate (district hospitals)	14.6	16.2	15.8	17.2	17.6	18.1	
	Delivery in facility under 18 years rate	10.3	10.1	10.1	9.5	8.9	9.1	
	Inpatient early neonatal death rate	10.1	10.6	9.2	9.8	9.5	8.6	
	Maternal mortality in facility ratio	110.3	119.0	161.1	135.0	175.8	149.1	
	Maternal mortality ratio institutional	176.6	161.0	213.9	195.2	177.1		
	Stillbirth rate in facility	24.5	24.8	24.3	24.1	24.3	21.3	
05_PMTCT	Antenatal 1st visit before 20 weeks rate	32.3	33.0	36.0	37.5	42.2	49.0	
	Antenatal client initiated on ART rate			54.6	66.5	81.1	74.2	
	Early infant HIV diagnosis coverage			51.0	54.9	74.9	90.5	
	HIV prevalence among antenatal clients (survey)	35.4	34.7	35.1	36.7	35.6		
	Infant 1st PCR test positive around 6 weeks rate	17.4	17.0	7.9	4.6	3.0	2.1	
	Percentage of PCR tests positive under 2 months	9.6	6.5	4.0	3.2	2.7	2.3	
06_Immunisat..	DTaP-IPV/Hib 3 - Measles 1st dose drop-out rate				2.5	12.4	8.9	
	Immunisation coverage under 1 year	73.6	79.5	58.3	58.9	67.8	71.1	
07_Child Health	Child under 5 years diarrhoea with dehydration incidence		10.7	12.2	7.1	7.5	13.0	
	Child under 5 years pneumonia incidence	58.8	56.4	43.7	33.5	26.3	18.5	
	Child under 5 years severe acute malnutrition incidence		5.5	3.8	2.3	2.5	2.7	
	Vitamin A coverage 12 to 59 months	25.8	27.8	29.1	34.2	34.8	36.0	
07_Child Mortality	Child under 5 years diarrhoea case fatality rate	14.7	11.5	12.9	8.2	7.6	4.9	
	Child under 5 years pneumonia case fatality rate		8.8	9.4	7.8	5.3	5.7	
	Child under 5 years severe acute malnutrition case fatality rate		16.1	22.1	27.3	13.1	12.8	
08_Reproductive health	Cervical cancer screening coverage (annualised)	40.9	52.2	60.2	50.6	48.5	54.9	
	Couple year protection rate (annualised)	28.8	31.6	33.0	28.0	29.9	36.0	
09_TB_CF	Incidence (diagnosed cases) of TB - all types	637.0	745.0	715.0	614.0	513.0	467.0	
	Incidence (diagnosed cases) of TB - new PTB sm+		298.1	298.6	232.6	197.5	185.8	
	Number of TB cases reported (all TB)		26,869.0	26,008.0	24,679.0	20,891.0	19,263.0	
	Number of TB cases reported (new sm+)		10,751.0	10,854.0	9,357.0	8,047.0	7,669.0	
	TB (pulmonary) case finding index		1.8	2.1	2.0	1.7	1.6	
	TB Rifampicin resistance confirmed client rate				7.9	11.2	9.5	
09_TB_TO	Smear conversion rate at 2 months (new sm+)	59.0	69.5	60.3	66.6	70.6	57.3	
	TB cure rate (new sm+)	62.4	69.1	42.1	69.9	76.8		
	TB defaulter rate (new sm+)		7.2	5.9	5.9	5.4		
	TB treatment success rate (all TB)	69.3	67.4	39.2	75.6	74.4		
10_HIV	Adult remaining on ART at end of the month - total				24,437.0	127,458.0	199,538.0	228,532.0
	Child under 15 years remaining on ART at end of the month - total				2,116.0	8,752.0	12,501.0	13,343.0
	HIV testing coverage (annualised)						24.3	
	Male condom distribution coverage	13.4	16.3	20.2	17.8	19.6	29.2	
	Percentage of TB cases with known HIV status	39.8	58.5	73.5	82.9	85.3	88.0	
	TB/HIV co-infected client on ART rate				23.1	60.4	44.9	
12_Socio-de..	Adults (18-65) with no secondary schooling				25.0			
	Medical scheme coverage (ave)		13.3					
	Percentage of people without piped water in dwelling or within 200m				19.6			
	South African Index of Multiple Deprivation Rank (1=most deprived)				6.0			
Extra	Area (km2)				76,495.0			
	Caesarean section rate (all)	14.3	15.6	15.8	16.4	16.7	17.6	
	Infant 1st PCR test around 6 weeks uptake rate	40.8	67.1	64.0	88.9	102.2	106.1	
	Live birth occurrences registered	88,108.0	84,104.0	81,551.0	83,910.0	79,403.0		
	Population density	50.5	51.2	51.9	52.6	53.3	54.0	54.7
	Population total (Census)				4,039,939.0			
	Population total (DHIS)	3,865,501.0	3,917,408.0	3,969,606.0	4,022,088.0	4,074,763.0	4,127,970.0	4,181,594.0
	Population under 1 year (Census)				94,419.0			
	Population under 1 year (DHIS)	81,782.0	85,300.0	90,051.0	93,991.0	95,866.0	95,452.0	92,016.0
	Tracer items stock-out rate (fixed clinic/CHC/CDC)				14.9	17.7	18.3	

Province page: NC, Northern Cape

Category	Indic	IndYear						
		2008	2009	2010	2011	2012	2013	2014
01_Finance	Percentage of DHS expenditure on district hospitals	42.3	42.9	38.7	32.0	28.0	26.5	
	Percentage of DHS expenditure on district management	4.9	4.6	6.5	8.0	9.3	8.4	
	Percentage of DHS expenditure on PHC	52.9	52.5	54.7	60.0	62.7	65.1	
	Provincial and LG expenditure on District Health Services per capita (total pop)	997.0	1,106.0	1,326.0	1,303.0	1,225.0	1,302.0	
	Provincial and LG expenditure on District Health Services per capita (uninsured)	1,178.0	1,307.0	1,566.0	1,540.0	1,447.0	1,538.0	
	Provincial PHC expenditure per capita (total pop)	536.0	582.0	736.0	793.0	778.0	856.0	
	Provincial PHC expenditure per capita (uninsured)	633.0	687.0	870.0	937.0	919.0	1,011.0	
	Provincial PHC expenditure per PHC headcount	173.4	196.1	240.3	270.7	262.8	290.3	
02_Managem.	PHC supervisor visit rate (fixed clinic/CHC/CDC)	28.8	23.3	18.1	26.4	29.0	41.8	
03_Management Inpatients	Average length of stay (district hospitals)	2.1	2.5	2.3	2.3	2.4	3.2	
	Expenditure per patient day equivalent (district hospitals)	1,407.0	1,563.0	1,742.0	2,030.0	1,968.0	1,911.0	
	Inpatient bed utilisation rate (district hospitals)	71.7	62.8	62.1	58.6	62.5	64.8	
	OPD new client not referred rate (district hospitals)			76.0	70.1	68.7	69.0	
04_Delivery	Caesarean section rate (district hospitals)	11.4	13.1	12.1	13.7	13.3	14.0	
	Delivery in facility under 18 years rate	9.7	9.8	9.3	10.1	10.2	10.2	
	Inpatient early neonatal death rate	11.2	10.6	12.0	13.0	11.7	12.8	
	Maternal mortality in facility ratio	4.6		90.7	147.7	144.6	118.9	
	Maternal mortality ratio institutional	273.9	267.1	248.2	197.0	149.1		
	Stillbirth rate in facility	21.7	22.0	27.3	25.0	25.3	26.1	
05_PMTCT	Antenatal 1st visit before 20 weeks rate	46.4	47.1	51.0	52.9	52.9	55.5	
	Antenatal client initiated on ART rate			51.0	55.3	83.1	80.3	
	Early infant HIV diagnosis coverage			55.3	65.1	71.1	82.8	
	HIV prevalence among antenatal clients (survey)	16.2	17.2	18.4	17.0	17.8		
	Infant 1st PCR test positive around 6 weeks rate	12.8	9.3	6.6	5.3	2.7	2.5	
	Percentage of PCR tests positive under 2 months	9.3	6.0	3.4	3.1	2.9	2.8	
06_Immunisat..	DTaP-IPV/Hib 3 - Measles 1st dose drop-out rate				6.5	9.5	0.8	
	Immunisation coverage under 1 year	93.3	90.2	85.8	88.5	86.6	84.9	
07_Child Health	Child under 5 years diarrhoea with dehydration incidence		16.2	14.0	8.7	12.1	18.5	
	Child under 5 years pneumonia incidence	116.2	114.7	104.3	89.0	79.7	67.6	
	Child under 5 years severe acute malnutrition incidence		5.6	5.1	4.2	6.8	4.2	
	Vitamin A coverage 12 to 59 months	32.8	27.2	26.2	31.9	34.7	38.7	
07_Child Mortality	Child under 5 years diarrhoea case fatality rate	7.9	6.7	3.6	3.9	2.1	3.2	
	Child under 5 years pneumonia case fatality rate		3.9	4.1	2.8	4.4	2.9	
	Child under 5 years severe acute malnutrition case fatality rate		28.9	13.0	10.9	8.4	11.8	
08_Reproductive health	Cervical cancer screening coverage (annualised)	30.1	35.1	37.9	30.7	30.1	31.6	
	Couple year protection rate (annualised)	34.4	33.6	36.0	30.9	31.6	32.8	
09_TB_CF	Incidence (diagnosed cases) of TB - all types	935.0	933.0	892.0	894.0	758.0	728.0	
	Incidence (diagnosed cases) of TB - new PTB sm+		298.1	293.2	320.4	323.6	364.9	
	Number of TB cases reported (all TB)		10,660.0	10,282.0	10,218.0	8,742.0	8,461.0	
	Number of TB cases reported (new sm+)		3,419.0	3,381.0	3,663.0	3,731.0	4,243.0	
	TB (pulmonary) case finding index		2.5	2.7	2.6	2.3	2.5	
	TB Rifampicin resistance confirmed client rate				6.6	5.5	5.5	
09_TB_TO	Smear conversion rate at 2 months (new sm+)	55.5	66.8	70.8	58.6	63.8	71.1	
	TB cure rate (new sm+)	65.0	68.4	70.7	68.3	68.5		
	TB defaulter rate (new sm+)		5.6	6.5	7.4	7.0		
	TB treatment success rate (all TB)	76.2	76.8	73.5	72.3	74.1		
10_HIV	Adult remaining on ART at end of the month - total				3,321.0	17,348.0	23,387.0	33,609.0
	Child under 15 years remaining on ART at end of the month - total				1,381.0	2,435.0	3,001.0	1,794.0
	HIV testing coverage (annualised)						20.5	
	Male condom distribution coverage	6.0	6.7	9.5	8.5	8.2	11.5	
	Percentage of TB cases with known HIV status	57.5	64.9	73.4	78.8	78.8	77.5	
	TB/HIV co-infected client on ART rate				34.7	63.5	68.9	
12_Socio-de..	Adults (18-65) with no secondary schooling				30.8			
	Medical scheme coverage (ave)		15.4					
	Percentage of people without piped water in dwelling or within 200m				8.5			
	South African Index of Multiple Deprivation Rank (1=most deprived)				5.0			
Extra	Area (km2)				372,889.0			
	Caesarean section rate (all)	14.5	16.6	17.6	19.5	19.5	18.9	
	Infant 1st PCR test around 6 weeks uptake rate	19.4	79.1	80.2	95.8	94.0	87.1	
	Live birth occurrences registered	24,967.0	24,154.0	24,025.0	23,942.0	23,819.0		
	Population density	3.0	3.0	3.0	3.1	3.1	3.1	3.1
	Population total (Census)				1,145,861.0			
	Population total (DHIS)	1,114,308.0	1,123,975.0	1,133,581.0	1,143,254.0	1,153,090.0	1,162,914.0	1,172,624.0
	Population under 1 year (Census)				24,678.0			
	Population under 1 year (DHIS)	21,808.0	22,264.0	23,080.0	23,822.0	24,237.0	24,405.0	24,092.0
	Tracer items stock-out rate (fixed clinic/CHC/CDC)				17.7	10.4	17.3	

Section B: Profile South Africa

Province page: NW, North West

Category	Indic	IndYear						
		2008	2009	2010	2011	2012	2013	2014
01_Finance	Percentage of DHS expenditure on district hospitals	32.4	28.9	28.8	29.9	26.9	25.8	
	Percentage of DHS expenditure on district management	8.3	7.2	6.6	6.9	9.5	9.4	
	Percentage of DHS expenditure on PHC	59.3	63.9	64.6	63.1	63.6	64.9	
	Provincial and LG expenditure on District Health Services per capita (total pop)	836.0	945.0	1,031.0	1,057.0	1,106.0	1,160.0	
	Provincial and LG expenditure on District Health Services per capita (uninsured)	961.0	1,087.0	1,186.0	1,215.0	1,272.0	1,335.0	
	Provincial PHC expenditure per capita (total pop)	498.0	606.0	675.0	677.0	711.0	757.0	
	Provincial PHC expenditure per capita (uninsured)	573.0	696.0	776.0	779.0	818.0	871.0	
	Provincial PHC expenditure per PHC headcount	204.0	245.4	289.3	300.4	319.7	338.4	
02_Managem..	PHC supervisor visit rate (fixed clinic/CHC/CDC)	46.0	51.4	56.9	60.4	69.8	69.0	
03_Management Inpatients	Average length of stay (district hospitals)	3.7	4.1	4.1	3.5	3.7	3.9	
	Expenditure per patient day equivalent (district hospitals)	1,677.0	1,820.0	1,953.0	2,115.0	2,184.0	2,235.0	
	Inpatient bed utilisation rate (district hospitals)	58.6	60.8	60.6	59.8	60.2	61.4	
	OPD new client not referred rate (district hospitals)			32.6	28.6	45.0	45.9	
04_Delivery	Caesarean section rate (district hospitals)	14.3	15.8	18.7	18.2	20.2	23.2	
	Delivery in facility under 18 years rate	9.6	8.3	8.1	7.2	7.2	7.0	
	Inpatient early neonatal death rate	9.8	10.2	12.8	11.2	10.4	9.5	
	Maternal mortality in facility ratio		67.9	204.6	189.7	166.6	184.9	
	Maternal mortality ratio institutional	162.6	278.5	239.6	168.4	137.4		
	Stillbirth rate in facility	23.5	24.7	25.2	24.6	23.5	23.5	
05_PMTCT	Antenatal 1st visit before 20 weeks rate	36.4	37.2	39.6	42.3	44.1	50.6	
	Antenatal client initiated on ART rate			68.1	72.8	74.7	79.2	
	Early infant HIV diagnosis coverage			48.8	57.0	61.1	74.8	
	HIV prevalence among antenatal clients (survey)	30.6	30.0	29.5	30.2	29.7		
	Infant 1st PCR test positive around 6 weeks rate	16.6	13.3	6.1	3.9	2.8	2.3	
	Percentage of PCR tests positive under 2 months	8.2	5.5	3.7	2.7	2.5	2.5	
06_Immunisat..	DTaP-IPV/Hib 3 - Measles 1st dose drop-out rate				2.0	4.1	5.1	
	Immunisation coverage under 1 year	77.5	77.5	66.5	68.2	72.4	74.2	
07_Child Health	Child under 5 years diarrhoea with dehydration incidence		13.4	12.4	8.3	6.8	14.3	
	Child under 5 years pneumonia incidence	102.1	109.3	82.8	63.7	39.2	25.7	
	Child under 5 years severe acute malnutrition incidence		7.2	6.7	4.8	4.8	8.1	
	Vitamin A coverage 12 to 59 months	30.9	26.1	27.0	34.0	32.2	39.3	
07_Child Mortality	Child under 5 years diarrhoea case fatality rate	9.0	8.1	5.6	4.9	5.8	4.8	
	Child under 5 years pneumonia case fatality rate		7.3	7.0	5.0	5.1	4.8	
	Child under 5 years severe acute malnutrition case fatality rate		19.0	14.6	11.1	11.2	11.6	
08_Reproductive health	Cervical cancer screening coverage (annualised)	51.7	47.0	48.4	46.8	46.5	59.6	
	Couple year protection rate (annualised)	23.9	26.0	26.3	21.3	28.0	32.9	
09_TB_CF	Incidence (diagnosed cases) of TB - all types	815.0	904.0	894.0	817.0	705.0	562.0	
	Incidence (diagnosed cases) of TB - new PTB sm+		316.5	310.5	280.3	246.1	190.8	
	Number of TB cases reported (all TB)		30,295.0	30,269.0	28,556.0	25,004.0	20,201.0	
	Number of TB cases reported (new sm+)		10,633.0	10,508.0	9,800.0	8,729.0	6,864.0	
	TB (pulmonary) case finding index		1.6	2.7	2.6	2.4	2.7	
	TB Rifampicin resistance confirmed client rate				8.0	7.1	5.4	
09_TB_TO	Smear conversion rate at 2 months (new sm+)	48.7	53.3	55.5	54.5	55.7	46.4	
	TB cure rate (new sm+)	52.3	63.5	66.4	68.9	66.0		
	TB defaulter rate (new sm+)		8.3	8.8	7.7	7.5		
	TB treatment success rate (all TB)	58.2	65.1	67.2	67.8	66.4		
10_HIV	Adult remaining on ART at end of the month - total				72,696.0	115,058.0	138,289.0	176,260.0
	Child under 15 years remaining on ART at end of the month - total				6,281.0	7,445.0	9,093.0	9,042.0
	HIV testing coverage (annualised)						30.0	
	Male condom distribution coverage	6.7	7.2	8.3	6.9	17.0	22.3	
	Percentage of TB cases with known HIV status	0.0	54.8	65.0	76.8	83.1	86.8	
	TB/HIV co-infected client on ART rate				29.4	63.2	67.8	
12_Socio-de..	Adults (18-65) with no secondary schooling				29.6			
	Medical scheme coverage (ave)		13.7					
	Percentage of people without piped water in dwelling or within 200m				16.7			
	South African Index of Multiple Deprivation Rank (1=most deprived)				4.0			
Extra	Area (km2)				104,882.0			
	Caesarean section rate (all)	14.6	15.4	16.1	16.7	16.7	19.2	
	Infant 1st PCR test around 6 weeks uptake rate	79.2	80.4	97.0	103.4	103.0	109.4	
	Live birth occurrences registered	83,699.0	79,435.0	77,933.0	77,000.0	72,615.0		
	Population density	32.0	32.4	32.9	33.3	33.8	34.3	34.8
	Population total (Census)				3,509,953.0			
	Population total (DHIS)	3,355,324.0	3,401,318.0	3,448,439.0	3,496,855.0	3,546,631.0	3,597,589.0	3,649,660.0
	Population under 1 year (Census)				83,901.0			
	Population under 1 year (DHIS)	75,630.0	76,018.0	76,436.0	76,560.0	76,008.0	75,330.0	73,815.0
	Tracer items stock-out rate (fixed clinic/CHC/CDC)				14.4	30.3	26.3	

Province page: WC, Western Cape

Category	Indic	IndYear						
		2008	2009	2010	2011	2012	2013	2014
01_Finance	Percentage of DHS expenditure on district hospitals	34.8	36.1	35.2	35.1	37.6	37.6	
	Percentage of DHS expenditure on district management	5.6	5.8	5.6	5.3	4.8	4.7	
	Percentage of DHS expenditure on PHC	59.6	58.0	59.2	59.6	57.7	57.8	
	Provincial and LG expenditure on District Health Services per capita (total pop)	760.0	886.0	983.0	1,014.0	1,033.0	1,045.0	
	Provincial and LG expenditure on District Health Services per capita (uninsured)	1,021.0	1,189.0	1,319.0	1,362.0	1,386.0	1,403.0	
	Provincial PHC expenditure per capita (total pop)	476.0	546.0	616.0	641.0	624.0	632.0	
	Provincial PHC expenditure per capita (uninsured)	639.0	733.0	828.0	860.0	837.0	849.0	
	Provincial PHC expenditure per PHC headcount	175.4	197.1	223.9	239.1	247.8	265.8	
02_Managem..	PHC supervisor visit rate (fixed clinic/CHC/CDC)	60.5	73.7	76.4	74.3	79.6	71.7	
03_Management Inpatients	Average length of stay (district hospitals)	3.1	2.6	3.0	3.1	3.2	3.7	
	Expenditure per patient day equivalent (district hospitals)	1,149.0	1,704.0	1,850.0	1,695.0	1,748.0	1,763.0	
	Inpatient bed utilisation rate (district hospitals)	82.1	78.5	77.3	84.7	87.6	88.7	
	OPD new client not referred rate (district hospitals)						40.2	
04_Delivery	Caesarean section rate (district hospitals)	20.7	21.9	23.3	23.7	24.1	25.6	
	Delivery in facility under 18 years rate	7.8	7.3	6.8	6.7	6.5	6.3	
	Inpatient early neonatal death rate	5.4	5.2	4.9	5.1	6.2	4.8	
	Maternal mortality in facility ratio				28.6	8.7	68.6	
	Maternal mortality ratio institutional	61.7	118.5	92.0	66.1	82.0		
	Stillbirth rate in facility	20.7	22.9	20.8	19.1	17.6	17.4	
05_PMTCT	Antenatal 1st visit before 20 weeks rate	42.6	46.4	52.7	56.2	58.2	61.0	
	Antenatal client initiated on ART rate			98.5	97.0	94.2	68.5	
	Early infant HIV diagnosis coverage			65.3	71.6	75.2	80.6	
	HIV prevalence among antenatal clients (survey)	16.1	16.9	18.5	18.2	16.9		
	Infant 1st PCR test positive around 6 weeks rate	4.1	3.3	2.7	2.1	1.7	1.9	
	Percentage of PCR tests positive under 2 months	4.7	4.2	3.1	2.0	1.8	2.2	
06_Immunisat..	DTaP-IPV/Hib 3 - Measles 1st dose drop-out rate				0.8		-1.9	
	Immunisation coverage under 1 year	90.2	92.9	85.0	86.2	88.8	84.9	
07_Child Health	Child under 5 years diarrhoea with dehydration incidence		30.3	19.1	16.5	16.3	15.6	
	Child under 5 years pneumonia incidence	86.4	83.3	68.7	69.3	61.2	66.5	
	Child under 5 years severe acute malnutrition incidence		5.9	2.7	3.1	2.9	2.1	
	Vitamin A coverage 12 to 59 months	32.0	38.2	32.3	36.3	37.8	44.4	
07_Child Mortality	Child under 5 years diarrhoea case fatality rate	0.4	0.4	0.3	0.2	0.1	0.2	
	Child under 5 years pneumonia case fatality rate		0.3	0.7	0.5		0.4	
	Child under 5 years severe acute malnutrition case fatality rate		3.2	1.8	3.9		2.2	
08_Reproductive health	Cervical cancer screening coverage (annualised)	52.9	57.9	65.8	57.5	54.5	57.2	
	Couple year protection rate (annualised)	56.5	59.4	58.8	51.6	57.7	63.6	
09_TB_CF	Incidence (diagnosed cases) of TB - all types	948.0	930.0	910.0	827.0	777.0	730.0	
	Incidence (diagnosed cases) of TB - new PTB sm+		269.5	284.4	255.1	237.3	214.7	
	Number of TB cases reported (all TB)		50,072.0	49,615.0	47,921.0	45,846.0	43,909.0	
	Number of TB cases reported (new sm+)		14,511.0	15,515.0	14,774.0	14,009.0	12,920.0	
	TB (pulmonary) case finding index		2.0	2.0	2.0	1.9	1.6	
	TB Rifampicin resistance confirmed client rate				4.7	5.1	5.0	
09_TB_TO	Smear conversion rate at 2 months (new sm+)	70.6	74.9	75.5	58.9	58.2	56.6	
	TB cure rate (new sm+)	78.8	79.8	81.3	81.4	81.3		
	TB defaulter rate (new sm+)		7.1	6.8	6.9	7.9		
	TB treatment success rate (all TB)	79.9	80.2	81.6	81.5	81.5		
10_HIV	Adult remaining on ART at end of the month - total				85,223.0	108,290.0	126,950.0	149,052.0
	Child under 15 years remaining on ART at end of the month - total				5,597.0	6,903.0	7,448.0	7,651.0
	HIV testing coverage (annualised)						6.4	
	Male condom distribution coverage	34.5	38.6	45.8	43.9	53.8	58.6	
	Percentage of TB cases with known HIV status	74.1	85.5	89.8	91.7	94.5	94.6	
	TB/HIV co-infected client on ART rate				42.6	69.8	65.9	
12_Socio-de..	Adults (18-65) with no secondary schooling				17.5			
	Medical scheme coverage (ave)		25.5					
	Percentage of people without piped water in dwelling or within 200m				2.8			
	South African Index of Multiple Deprivation Rank (1=most deprived)				8.0			
Extra	Area (km2)				129,462.0			
	Caesarean section rate (all)	19.9	20.8	22.9	24.5	25.6	28.6	
	Infant 1st PCR test around 6 weeks uptake rate	93.1	95.8	93.9	37.0	55.0	94.7	
	Live birth occurrences registered	111,362.0	106,759.0	104,102.0	102,270.0	98,401.0		
	Population density	42.2	43.1	43.9	44.7	45.6	46.5	47.4
	Population total (Census)				5,822,734.0			
	Population total (DHIS)	5,466,023.0	5,573,372.0	5,681,998.0	5,792,096.0	5,904,017.0	6,016,926.0	6,130,791.0
	Population under 1 year (Census)				117,651.0			
	Population under 1 year (DHIS)	104,617.0	105,506.0	106,797.0	107,539.0	106,516.0	105,611.0	103,781.0
	Tracer items stock-out rate (fixed clinic/CHC/CDC)						2.4	

Section B: Profile South Africa

Table 2: SA averages

		IndYear						
		2008	2009	2010	2011	2012	2013	2014
01_Finance	Percentage of DHS expenditure on district hospitals	42.6	42.2	40.3	39.1	37.5	37.4	
	Percentage of DHS expenditure on district management	5.7	5.2	5.2	5.5	5.8	5.5	
	Percentage of DHS expenditure on PHC	51.6	52.6	54.5	55.4	56.7	57.1	
	Provincial and LG expenditure on District Health Services per capita (total pop)	849.5	966.2	1,046.7	1,083.7	1,134.0	1,136.6	
	Provincial and LG expenditure on District Health Services per capita (uninsured)	1,024.8	1,166.2	1,264.0	1,309.4	1,370.9	1,374.7	
	Provincial PHC expenditure per capita (total pop)	456.6	526.3	595.6	623.8	668.1	672.7	
	Provincial PHC expenditure per capita (uninsured)	550.8	635.2	719.2	753.7	807.7	813.6	
	Provincial PHC expenditure per PHC headcount	196.4	219.9	253.1	252.9	270.8	276.2	
02_Man ag.	PHC supervisor visit rate (fixed clinic/CHC/CDC)	61.3	69.3	68.4	74.1	76.0	73.7	
03_Management Inpatients	Average length of stay (district hospitals)	4.4	4.3	4.3	4.3	4.2	4.7	
	Expenditure per patient day equivalent (district hospitals)	1,492.7	1,641.4	1,822.9	1,841.6	1,925.8	1,968.7	
	Inpatient bed utilisation rate (district hospitals)	68.0	67.6	64.7	67.2	67.3	66.3	
	OPD new client not referred rate (district hospitals)			65.6	64.6	64.1	61.5	
04_Delivery	Caesarean section rate (district hospitals)	16.3	17.6	18.5	19.9	20.8	21.8	
	Delivery in facility under 18 years rate	8.7	8.1	8.0	8.1	7.7	7.8	
	Inpatient early neonatal death rate	9.1	9.5	10.0	10.2	10.2	10.1	
	Maternal mortality in facility ratio	70.1	93.4	138.5	144.9	132.9	133.3	
	Maternal mortality ratio institutional	165.6	189.5	182.8	165.6	151.7		
	Stillbirth rate in facility	22.3	23.0	22.7	22.5	21.8	21.5	
05_PMTCT	Antenatal 1st visit before 20 weeks rate	32.9	34.5	37.6	40.2	44.0	50.0	
	Antenatal client initiated on ART rate			86.7	80.4	81.6	76.3	
	Early infant HIV diagnosis coverage			56.2	66.9	73.9	88.3	
	HIV prevalence among antenatal clients (survey)	29.3	29.4	30.2	29.5	29.5		
	Infant 1st PCR test positive around 6 weeks rate	9.0	10.9	7.6	4.0	2.5	2.0	
Percentage of PCR tests positive under 2 months	8.4	5.7	3.8	2.7	2.4	2.2		
06_Imm.	DTaP-IPV/Hib 3 - Measles 1st dose drop-out rate				-1.3	-8.6	6.3	
	Immunisation coverage under 1 year	87.0	88.8	80.8	83.9	83.6	84.4	
07_Child Health	Child under 5 years diarrhoea with dehydration incidence		21.1	17.1	13.2	11.2	14.1	
	Child under 5 years pneumonia incidence	94.9	97.4	83.6	75.1	62.5	53.2	
	Child under 5 years severe acute malnutrition incidence		5.5	4.9	4.1	4.1	4.5	
	Vitamin A coverage 12 to 59 months	32.2	33.9	34.6	41.6	40.5	44.3	
07_Child Mortality	Child under 5 years diarrhoea case fatality rate	8.4	7.1	7.0	4.6	4.3	3.9	
	Child under 5 years pneumonia case fatality rate		6.6	5.8	4.2	3.8	3.5	
	Child under 5 years severe acute malnutrition case fatality rate		19.3	16.4	13.3	12.7	11.3	
08_Reproductive health	Cervical cancer screening coverage (annualised)	45.6	47.6	52.2	50.2	50.3	54.1	
	Couple year protection rate (annualised)	30.9	31.9	31.6	28.7	32.7	37.3	
09_TB_CF	Incidence (diagnosed cases) of TB - all types	752.8	831.8	718.4	762.3	689.3	620.8	
	Incidence (diagnosed cases) of TB - new PTB sm+		274.7	232.8	255.3	234.2	208.4	
	Number of TB cases reported (all TB)		411,724.0	358,961.0	393,214.0	360,308.0	328,897.0	
	Number of TB cases reported (new sm+)		135,978.0	116,308.0	131,665.0	122,425.0	110,431.0	
	TB (pulmonary) case finding index		2.3	2.6	2.6	2.4	2.4	
	TB Rifampicin resistance confirmed client rate				7.1	7.1	6.6	
09_TB_TO	Smear conversion rate at 2 months (new sm+)	62.5	66.5	68.1	64.6	66.7	60.9	
	TB cure rate (new sm+)	66.6	69.3	69.2	74.2	75.8		
	TB defaulter rate (new sm+)		7.0	6.8	6.1	6.2		
	TB treatment success rate (all TB)	71.3	72.3	70.8	75.4	76.1		
10_HIV	Adult remaining on ART at end of the month - total				938,034.0	1,439,445.0	2,036,666.0	2,520,206.0
	Child under 15 years remaining on ART at end of the month - total				69,707.0	97,738.0	140,471.0	150,321.0
	HIV testing coverage (annualised)						22.8	
	Male condom distribution coverage	12.2	13.3	14.8	15.7	21.8	27.9	
	Percentage of TB cases with known HIV status	43.3	58.9	73.5	82.7	86.9	89.5	
TB/HIV co-infected client on ART rate				28.0	60.6	66.2		
12_Socio-demogr.	Adults (18-65) with no secondary schooling				21.6			
	Medical scheme coverage (ave)		16.9					
	Percentage of people without piped water in dwelling or within 200m				16.9			
	South African Index of Multiple Deprivation Rank (1=most deprived)							
EXtra	Area (km2)				1,220,813.3			
	Caesarean section rate (all)	19.2	20.3	21.6	22.7	23.2	24.4	
	Infant 1st PCR test around 6 weeks uptake rate	70.4	85.7	86.0	92.8	98.7	102.5	
	Live birth occurrences registered	1,074,448.0	1,007,501.0	990,775.0	985,727.0	926,726.0		
	Population density	40.6	41.1	41.7	42.3	42.8	43.4	44.0
	Population total (Census)				51,770,560.0			
	Population total (DHIS)	49,561,255.7	50,222,996.0	50,895,697.9	51,579,598.9	52,274,945.1	52,981,991.5	53,701,002.6
	Population under 1 year (Census)				1,159,123.0			
	Population under 1 year (DHIS)	1,059,039.9	1,071,148.2	1,084,567.8	1,092,582.6	1,092,602.1	1,085,184.5	1,059,664.2
	Tracer items stock-out rate (fixed clinic/CHC/CDC)				10.5	16.4	18.2	