

Western Cape Province

The Western Cape, with a population of over 4.9 million people had the best socio-economic development in SA and the highest proportion of households with access to piped water (98.9%) in 2007.

In 2008/09, the province had the third highest total PHC expenditure per capita (R870)⁷⁴ and the highest non-hospital per capita expenditure on PHC in the country at R482 per person, although the latter has been growing at a slower rate than most other provinces and the inter-provincial gap is reducing. There were wide inter-district variations in the province with Central Karoo having the highest total PHC expenditure per capita as well as the highest non-hospital per capita expenditure on PHC amongst the districts in that year. The Western Cape has 32 district hospitals with some 2188 usable beds. The percentage of District Health Services expenditure on these hospitals has increased from 25.7% in 2005/06 to 32.6% in 2008/09, but it is below the national average of 41.8%. The cost per patient day equivalent in district hospitals in this province was R1063 in 2008/09, close to the national average of R1096. The non-hospital cost per patient visit to a primary health care facility was R125 and varied from a high of R143 in the City of Cape Town to a low of R85 in Eden.

The PHC facility utilisation rate in the Western Cape was 3.0 visits per person per year in 2008/09, above the national average of 2.4. The bed utilisation rate (BUR) of the province (79.9%) was the highest of all the provinces, with the City of Cape Town (86.6%) and Central Karoo (83.2%) having the highest and third highest BUR respectively of all districts in South Africa. The clinic supervision rate improved significantly from 33.7% in 2007/08 to 59.9% in 2008/09. However, not all districts have improved in the last year and the district values range from a high of 88.1% of clinics supervised in Central Karoo to a dismal 36.3% in the West Coast. The average length of stay in a district hospital was 3.2 days in 2008/09, well below the national average of 4.3 days.

The province continued to perform well in the management of priority diseases compared to the rest of the country. The TB cure rate at 77.7% in 2007 was the best in South Africa, with all districts in the province ranked within the top ten performing districts in the country. The smear conversion rate has improved from 38.5% in 2003/04 to 70.6% in 2008. This positive trend should be an inspiration to other provinces and districts with low conversion rates and provides evidence that very low smear conversion rates can indeed be improved. In 2007 the province had the second highest incidence (342.6 new smear positive cases per 100 000 people) in the country which decreased to 328.2 cases per 100 000 in 2008.

In 2008 the Western Cape had the lowest HIV/AIDS prevalence rate in the country of 16.1% as measured by the National HIV and Syphilis Prevalence Survey South Africa 2008. The City of Cape Town had the highest HIV prevalence among the province's districts of 17.4%, up from 16% in 2007, but well below the national average of 29.3%.

There are no data in this report for the Western Cape on the indicator measuring the proportion of infants born to known HIV positive women who were PCR tested for HIV at six weeks after birth (Baby PCR test around 6 weeks uptake) since this province uses a more intensive cohort register to track HIV exposed infants rather than the DHIS norm of live births to HIV positive women. There is also some uncertainty whether the denominator used in the Western Cape for measuring the Antenatal client CD4 1st test rate is entirely comparable with DHIS data for the rest of the country.

The Western Cape distributed an average of 36.5 condoms per male 15 years and older in 2008/09, down from 40.5 in 2007/08, but still by far the highest in the country. This figure is largely due to the high condom distribution rates of three districts; 47.0 condoms per man per year in the City of Cape Town (its sub-district, Khayelitsha having distributed 77.8 per man per year), 29.3 in Central Karoo and 22.3 in West Coast, all of which are much higher than the national rate of 12.3 condoms per male 15 years and older, per year. The Western Cape has recorded the lowest incidence of new STIs in the country at 2.6% for the province and a low of 2.5% in the City of Cape Town. The data for 'STI – new episode' in the Western Cape, however, and especially in the City of Cape Town, was recorded per person and not per episode which will have contributed to the low figures.

The Caesarean section rate in district hospitals at 20.4% is high compared to the majority of other provinces, with the City of Cape Town having the highest rate of the districts in the Western Cape at 30.1%. This high rate is most probably caused by the exceptionally high rate of 59.2% recorded in Khayelitsha sub-district. The delivery rate in facility of 97.8% was the highest in the country and varied from a high of over 100% in

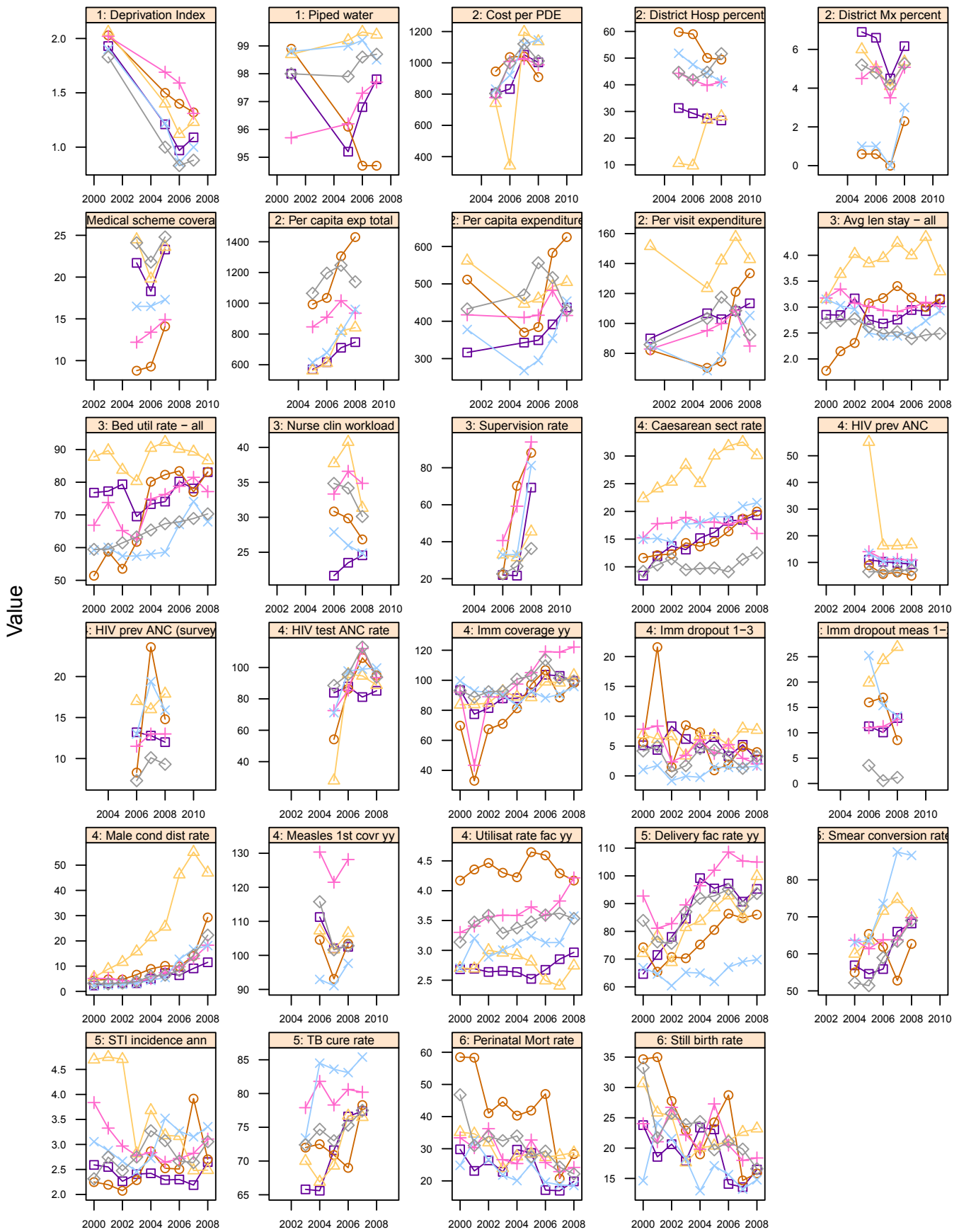
⁷⁴ Figures are in REAL prices that have been adjusted for the effects of inflation to 2008/09 prices.

Eden to a low of 69.8% in Overberg.

According to the data, more than all the children under one year of age resident in the Western Cape in 2008/09 (103.9%) were immunised. This high figure is contributed to by the improbably high immunisation rate recorded in Eden district of 122% in 2008/09. This district has recorded an immunisation coverage of over 100% for the last four years and the reasons for this anomaly need to be investigated. One likely reason is an underestimation of the population under one year (denominator) which may be contributed to by the influx of people from Eastern Cape Province and other African countries. The drop-out rate from DTP1 to DTP3 in the Western Cape was the highest in the country at 6.0%, ranging from a high of 7.7% in the City of Cape Town (of which its sub-district Khayelitsha recorded a massive 26.1% drop-out rate) to a low of 1.6% in Overberg. The Measles 1st dose coverage for all the districts, except for Overberg was above 100%. The average drop-out rate for Measles 1-2 immunisation in the province at 21.4% was a lot higher than the DTP1-3 drop-out rate at 6%. The district Measles immunisation drop-out values ranged from a low of 1.2% in West Coast to 26.9% recorded in the City of Cape Town (the drop-out rate in Khayelitsha sub-district was 31.3%).

The stillbirth rate (21 per 1000 births) and the perinatal mortality rate (26.3 per 1000 births) were both the lowest in the country and below the national average of 22.3 and 31.4 per 1000 births respectively.

Annual indicators for districts in Western Cape (WC)



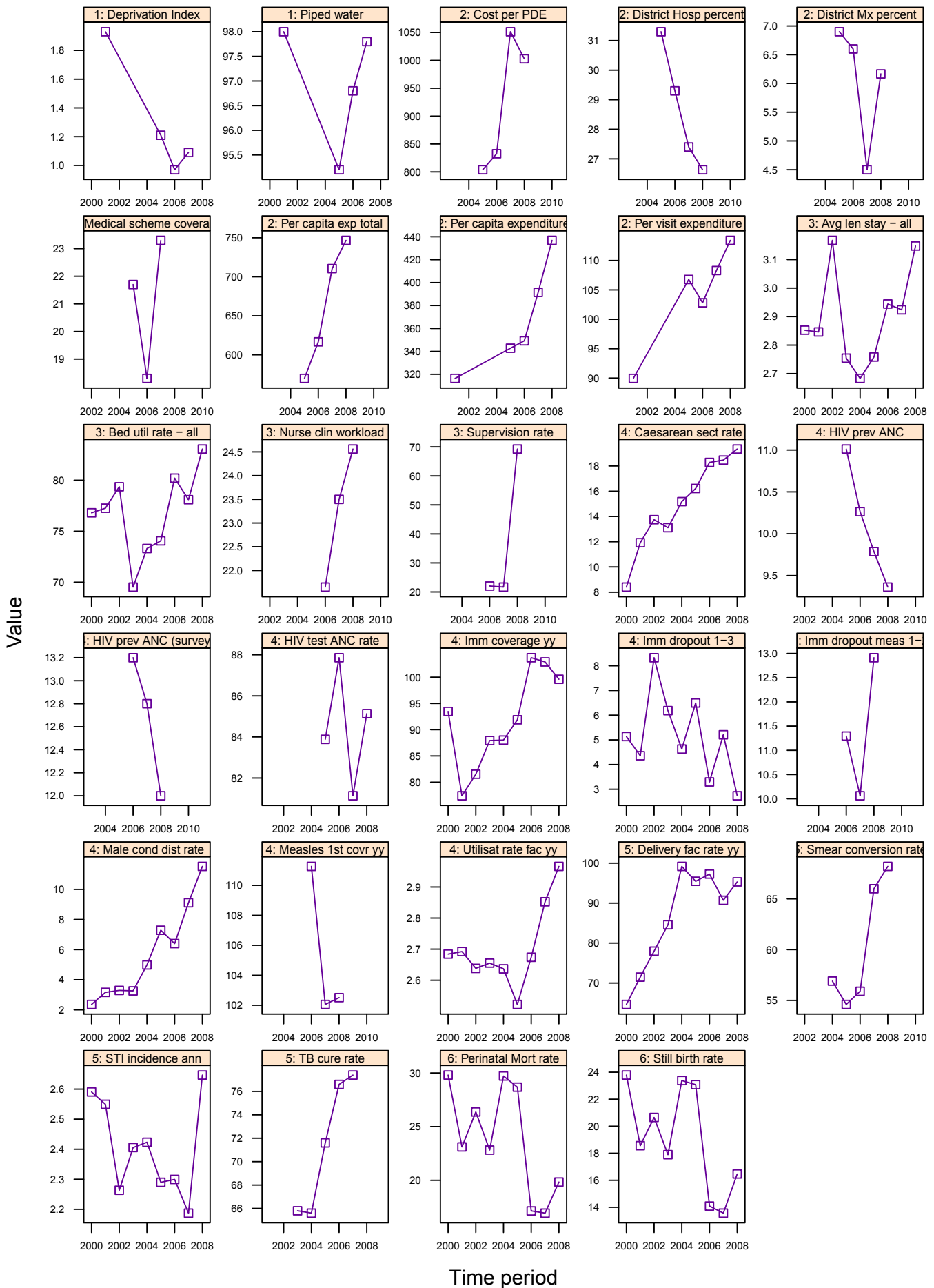
Districts			
Cape Winelands: DC2	□	City of Cape Town: CPT	△
Central Karoo: DC5	○	Eden: DC4	+
		Overberg: DC3	×
		West Coast: DC1	◇

Annual indicators for Western Cape Province

WC	Western Cape	Year								District Rank (1=best)	National value
		2001/02	2002/03	2003/04	2004/05	2005/06	2006/07	2007/08	2008/09		
Demographic and socio-economic	Population total					4 646 393	4 745 473	4 850 324	4 945 733		48 272 353
	Population Density					-	-	-	38		40
	Medical aid coverage (%)					22.4	18.8	22.4	-	-	14.3
	Access to piped water (%) - (2005-06 GHS, 2007 Comm. Survey)					98.3	98.8	98.9	-	-	88.7
	Deprivation index - (high value = most deprived)	-	-	-	-	-	-	-	-	-	-
	Socio-economic quintile - (1=poor, 5=best)	-	-	-	-	-	-	-	-	-	-
Input	Total PHC expenditure per capita - (real 2008/09 prices)	-	-	-	-	630	686	857	870	-	794
	Non-hospital PHC expenditure per capita - (real 2008/09 prices)	499	-	-	-	421	438	475	482	-	367
	% District health services expenditure on District Management	-	-	-	-	5.4	4.9	3.8	5.2		5.6
	% District health services expenditure on District Hospitals	-	-	-	-	25.7	23.8	31.6	32.6		41.8
	PHC (Non-Hospital) Expenditure per Patient Visit - (real 2008/09 prices)	127	-	-	-	113	125	137	125	-	128
	Cost per PDE - (real 2008/09 prices)	-	-	-	-	792	696	1 123	1 063		1096
Process	Nurse clinical workload	-	-	-	-	-	30.8	29.9	30.0	-	23.3
	Average length of stay (ALOS)	-	-	3.1	3.1	3.2	3.2	3.3	3.2	-	4.3
	Bed utilisation rate (BUR)	-	-	68.8	77.0	78.7	80.4	81.0	79.9	-	66.9
	Clinic supervision rate	-	-	-	-	-	30.8	33.7	59.9	-	61.4
Output	Male condom distribution rate	-	-	11.6	15.9	19.3	33.4	40.5	36.5	-	12.3
	Immunisation coverage < 1 year	-	-	91.2	90.0	91.6	101.8	100.5	103.9	-	89.5
	Immunisation drop-out rate (DTP1-3)	-	-	3.6	6.0	6.0	4.7	6.5	6.0	-	2.7
	Measles Coverage						109.6	102.9	107.3	-	91.8
	Measles drop-out rate						17.1	19.4	21.4	-	16.3
	Caesarean section rate	-	-	17.4	17.1	18.6	19.5	20.7	20.4		16.1
	Proportion ANC clients tested for HIV	-	-	-	-	47.6	93.2	95.7	89.6	-	86.7
	HIV prevalence among ANC clients tested (DHIS)	-	-	-	-	26.9	13.8	13.9	13.9	-	24.3
	HIV prevalence among ANC clients tested (survey)	-	-	-	-	-	(11.6-18.7)	(12.2-18.9)	(12.6-20.2)	-	29.3
	Baby PCR test around 6 weeks uptake								7.4		
	Antenatal client CD4 1st test rate								0.0		
	Utilisation rate	-	-	3.0	3.0	2.9	2.7	2.7	3.0	-	2.4
Outcome	Incidence of STI treated - new	-	-	2.7	3.4	3.0	3.0	2.5	2.6	-	4.6
	TB cure rate (2003 - 2007)	-	-	71.9	70.1	71.9	77.3	77.7		-	64.0
	TB smear conversion rate (2004 - 2008)	-	-	-	58.0	60.7	66.9	71.1	70.6	-	62.5
	TB case load (new Sm+)	-	-	-	-	-	-	16 619	16 234		138 803
	Delivery rate in facility	-	-	82.1	86.4	89.6	93.7	87.2	97.8	-	86.6
Impact	Stillbirth rate	-	-	18.6	20.5	21.4	20.0	20.3	21.0	-	22.3
	Perinatal mortality rate in facility	-	-	24.7	27.9	28.9	25.8	25.3	26.3	-	31.4

Number of health facilities and beds	Clinic	CHCs	Mobile Service	District Hospital	Regional Hospital	Provincial Tertiary Hospital	Central Hospital	Specialised Hospital	Private hospitals	Beds
Number of public sector facilities (2009) and beds (2009)	260	56	99	32	8	0	3	17		9 135
Number of private sector facilities and beds (2008)									34	4 042

Annual indicators for district: Cape Winelands – DC2

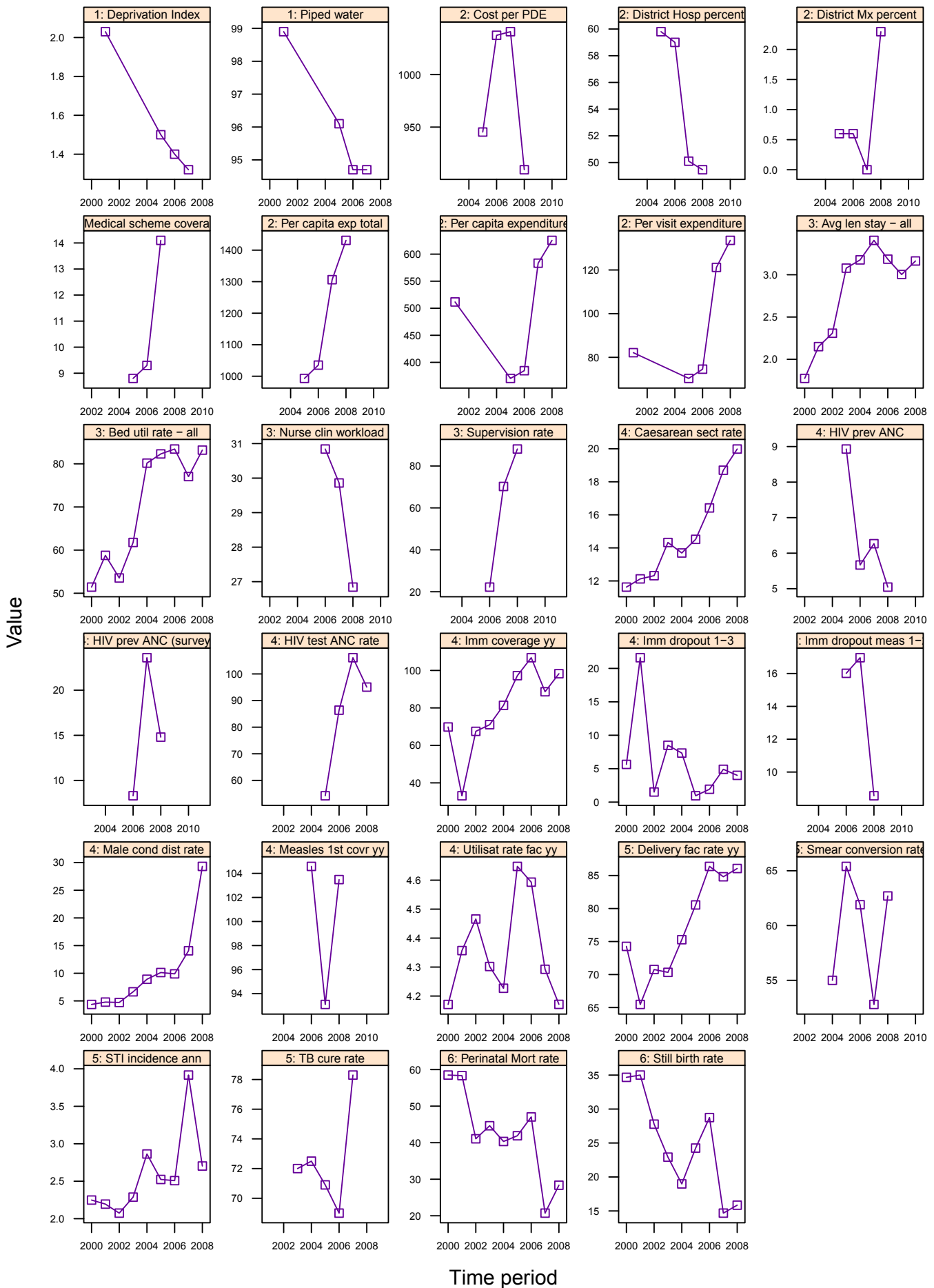


Annual indicators for Cape Winelands

DC2	Cape Winelands District Municipality	Year								District Rank (1=best)	National value
		2001/02	2002/03	2003/04	2004/05	2005/06	2006/07	2007/08	2008/09		
Demographic and socio-economic	Population total					627 110	639 618	652 298	663 802		48 272 353
	Population Density					-	-	-	30		40
	Medical aid coverage (%)					21.7	18.3	23.3	-	7	14.3
	Access to piped water (%) - (2005-06 GHS, 2007 Comm. Survey)					95.2	96.8	97.8	-	8	88.7
	Deprivation index - (high value = most deprived)	1.93	-	-	-	1.21	0.97	1.09	-	4	-
	Socio-economic quintile - (1=poor, 5=best)	-	-	-	-	5	5	5	-	-	-
Input	Total PHC expenditure per capita - (real 2008/09 prices)	-	-	-	-	570	617	710	747	37	794
	Non-hospital PHC expenditure per capita - (real 2008/09 prices)	316	-	-	-	343	349	391	437	29	367
	% District health services expenditure on District Management	-	-	-	-	6.9	6.6	4.5	6.2		5.6
	% District health services expenditure on District Hospitals	-	-	-	-	31.3	29.3	27.4	26.6		41.8
	PHC (Non-Hospital) Expenditure per Patient Visit - (real 2008/09 prices)	90	-	-	-	107	103	108	113	34	128
	Cost per PDE - (real 2008/09 prices)	-	-	-	-	804	833	1 051	1 003		1096
Process	Nurse clinical workload	-	-	-	-	-	21.6	23.5	24.6	22	23.3
	Average length of stay (ALOS)	-	-	2.8	2.7	2.8	2.9	2.9	3.1	14	4.3
	Bed utilisation rate (BUR)	-	-	69.5	73.3	74.1	80.2	78.1	83.1	4	66.9
	Clinic supervision rate	-	-	-	-	-	22.0	21.7	69.3	21	61.4
Output	Male condom distribution rate	-	-	3.3	5.0	7.3	6.4	9.1	11.5	18	12.3
	Immunisation coverage < 1 year	-	-	87.9	88.0	91.9	103.7	102.9	99.6	12	89.5
	Immunisation drop-out rate (DTP1-3)	-	-	6.2	4.6	6.5	3.3	5.2	2.7	27	2.7
	Measles Coverage						111.3	102.1	102.5	42	91.8
	Measles drop-out rate						11.3	10.1	12.9	23	16.3
	Caesarean section rate	-	-	13.1	15.2	16.2	18.3	18.5	19.3		16.1
	Proportion ANC clients tested for HIV	-	-	-	-	83.9	87.9	81.1	85.1	40	86.7
	HIV prevalence among ANC clients tested (DHIS)	-	-	-	-	11.0	10.3	9.8	9.4	5	24.3
	HIV prevalence among ANC clients tested (survey)	-	-	-	-	-	13.2 (10.4-16.1)	12.8 (8.1-19.7)	12 (8.2-17.3)	3	29.3
	Baby PCR test around 6 weeks uptake								-		
	Antenatal client CD4 1st test rate								101.6		
	Utilisation rate	-	-	2.7	2.6	2.5	2.7	2.9	3.0	15	2.4
	Outcome	Incidence of STI treated - new	-	-	2.4	2.4	2.3	2.3	2.2	2.6	9
TB cure rate (2003 - 2007)		-	-	65.8	65.6	71.6	76.6	77.4		8	64.0
TB smear conversion rate (2004 - 2008)		-	-	-	56.9	54.6	55.9	66.0	68.2	20	62.5
TB case load (new Sm+)		-	-	-	-	-	-	2 811	2 658		138 803
Delivery rate in facility		-	-	84.6	99.2	95.5	97.3	90.7	95.3	11	86.6
Impact	Stillbirth rate	-	-	17.9	23.4	23.1	14.1	13.6	16.5	6	22.3
	Perinatal mortality rate in facility	-	-	22.8	29.7	28.7	17.1	16.9	19.8	2	31.4

Number of health facilities and beds	Clinic	CHCs	Mobile Service	District Hospital	Regional Hospital	Provincial Tertiary Hospital	Central Hospital	Specialised Hospital	Private hospitals	Beds
Number of public sector facilities (2009) and beds (2009)	55	3	24	4	3	0	0	2		1 098
Number of private sector facilities and beds (2008)									4	448

Annual indicators for district: Central Karoo – DC5

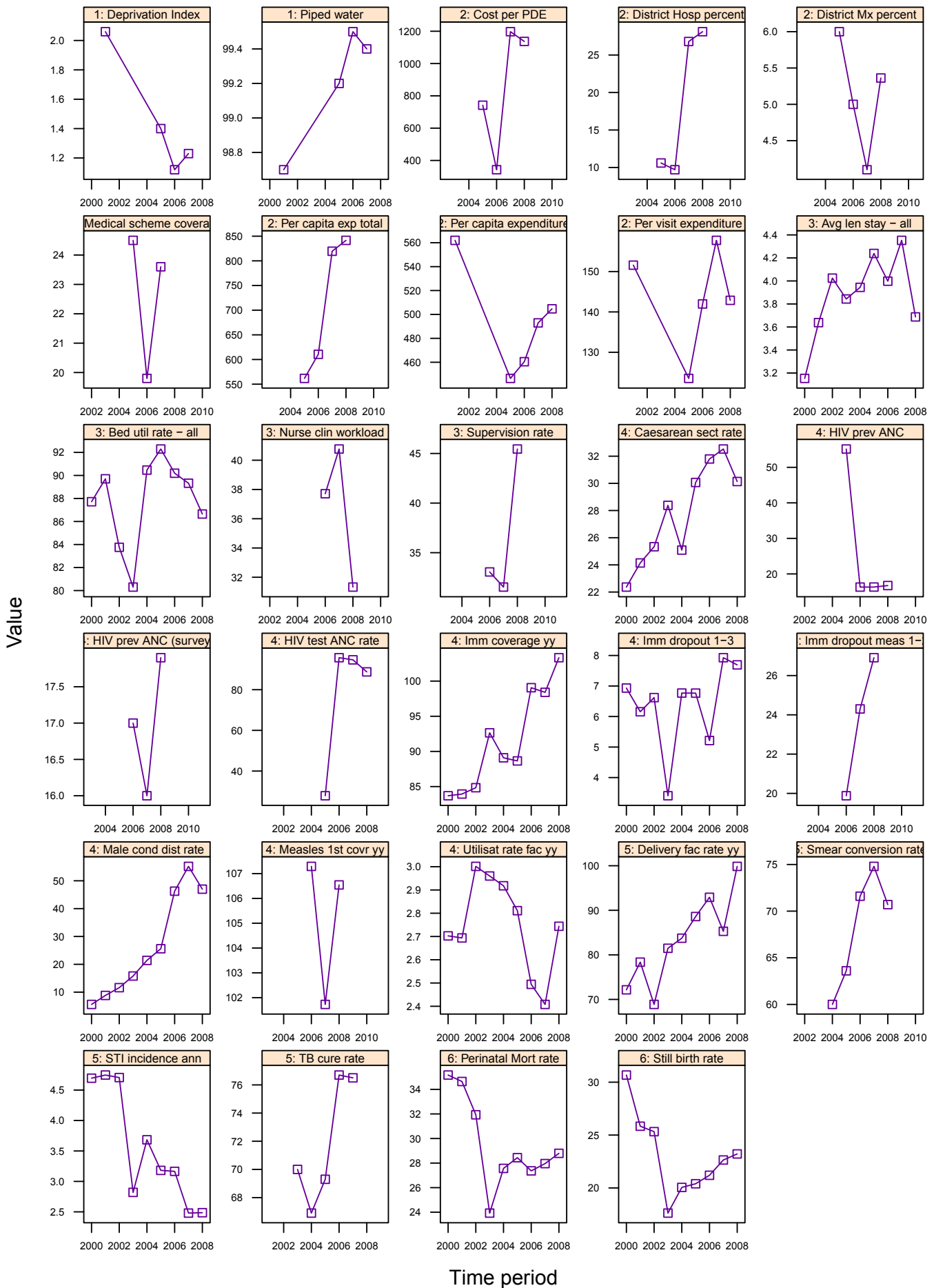


Annual indicators for Central Karoo

DC5	Central Karoo District Municipality	Year								District Rank (1=best)	National value
		2001/02	2002/03	2003/04	2004/05	2005/06	2006/07	2007/08	2008/09		
Demographic and socio-economic	Population total					61 380	62 364	63 289	64 137		48 272 353
	Population Density					-	-	-	2		40
	Medical aid coverage (%)					8.8	9.3	14.1	-	22	14.3
	Access to piped water (%) - (2005-06 GHS, 2007 Comm. Survey)					96.1	94.7	94.7	-	22	88.7
	Deprivation index - (high value = most deprived)	2.03	-	-	-	1.50	1.40	1.32	-	7	-
	Socio-economic quintile - (1=poor, 5=best)	-	-	-	-	5	5	5	-	-	-
Input	Total PHC expenditure per capita - (real 2008/09 prices)	-	-	-	-	993	1 035	1 306	1 431	2	794
	Non-hospital PHC expenditure per capita - (real 2008/09 prices)	512	-	-	-	370	385	583	625	6	367
	% District health services expenditure on District Management	-	-	-	-	0.6	0.6	0.0	2.3		5.6
	% District health services expenditure on District Hospitals	-	-	-	-	59.8	59.0	50.1	49.5		41.8
	PHC (Non-Hospital) Expenditure per Patient Visit - (real 2008/09 prices)	82	-	-	-	70	75	121	134	20	128
	Cost per PDE - (real 2008/09 prices)	-	-	-	-	945	1 037	1 041	909		1096
Process	Nurse clinical workload	-	-	-	-	-	30.8	29.9	26.8	18	23.3
	Average length of stay (ALOS)	-	-	3.1	3.2	3.4	3.2	3.0	3.2	15	4.3
	Bed utilisation rate (BUR)	-	-	61.8	80.2	82.3	83.4	77.0	83.2	3	66.9
	Clinic supervision rate	-	-	-	-	-	22.2	70.2	88.1	3	61.4
Output	Male condom distribution rate	-	-	6.6	8.9	10.1	9.9	14.1	29.3	2	12.3
	Immunisation coverage < 1 year	-	-	71.1	81.4	97.2	106.8	88.6	98.2	14	89.5
	Immunisation drop-out rate (DTP1-3)	-	-	8.5	7.3	0.9	1.9	4.9	4.0	35	2.7
	Measles Coverage						104.6	93.1	103.5	44	91.8
	Measles drop-out rate						16.0	17.0	8.6	8	16.3
	Caesarean section rate	-	-	14.3	13.7	14.5	16.4	18.7	20.0		16.1
	Proportion ANC clients tested for HIV	-	-	-	-	54.2	86.4	106.1	95.1	23	86.7
	HIV prevalence among ANC clients tested (DHIS)	-	-	-	-	8.9	5.7	6.3	5.0	2	24.3
	HIV prevalence among ANC clients tested (survey)	-	-	-	-	-	8.3 (0.5-16.1)	23.6 (15.2-34.7)	14.8 (7.5-27.1)	8	29.3
	Baby PCR test around 6 weeks uptake								-		
	Antenatal client CD4 1st test rate								111.9		
	Utilisation rate	-	-	4.3	4.2	4.6	4.6	4.3	4.2	2	2.4
	Outcome	Incidence of STI treated - new	-	-	2.3	2.9	2.5	2.5	3.9	2.7	10
TB cure rate (2003 - 2007)		-	-	72	72.5	70.9	69.0	78.3		5	64.0
TB smear conversion rate (2004 - 2008)		-	-	-	55.0	65.4	61.9	52.8	62.7	24	62.5
TB case load (new Sm+)		-	-	-	-	-	-	274	249		138 803
Delivery rate in facility		-	-	70.3	75.3	80.5	86.4	84.8	86.1	28	86.6
Impact	Stillbirth rate	-	-	22.9	19.0	24.3	28.7	14.7	15.8	3	22.3
	Perinatal mortality rate in facility	-	-	44.6	40.3	41.9	47.0	20.7	28.4	15	31.4

Number of health facilities and beds	Clinic	CHCs	Mobile Service	District Hospital	Regional Hospital	Provincial Tertiary Hospital	Central Hospital	Specialised Hospital	Private hospitals	Beds
Number of public sector facilities (2009) and beds (2009)	6	1	6	4	0	0	0	1		291
Number of private sector facilities and beds (2008)									0	0

Annual indicators for district: City of Cape Town – CPT

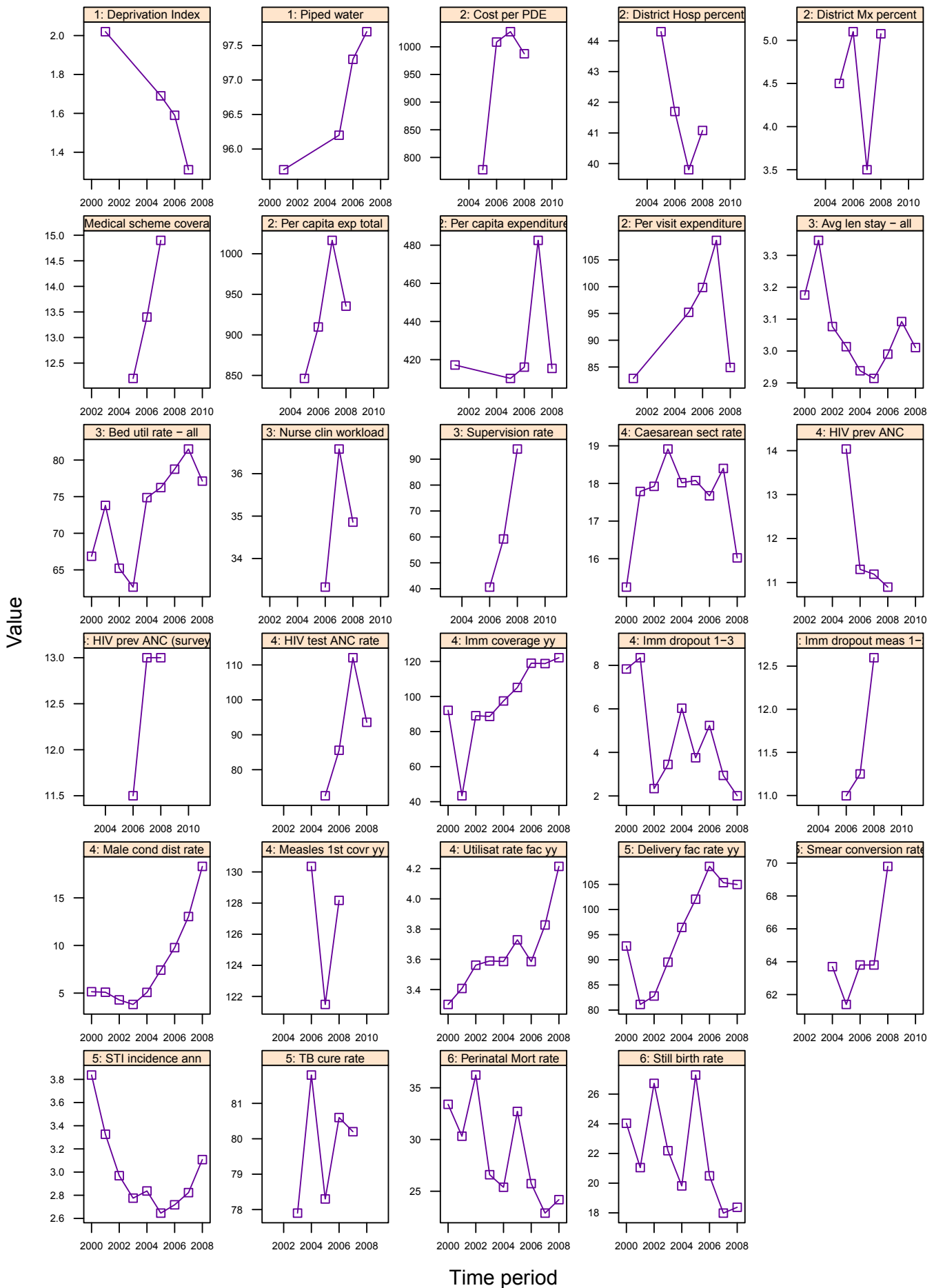


Annual indicators for City of Cape Town

CPT	City of Cape Town Metropolitan Municipality	Year								District Rank (1=best)	National value
		2001/02	2002/03	2003/04	2004/05	2005/06	2006/07	2007/08	2008/09		
Demographic and socio-economic	Population total					3 047 476	3 110 655	3 179 237	3 241 406		48 272 353
	Population Density					-	-	-	1 318		40
	Medical aid coverage (%)					24.5	19.8	23.6	-	6	14.3
	Access to piped water (%) - (2005-06 GHS, 2007 Comm. Survey)					99.2	99.5	99.4	-	1	88.7
	Deprivation index - (high value = most deprived)	2.06	-	-	-	1.40	1.12	1.23	-	5	-
	Socio-economic quintile - (1=poor, 5=best)	-	-	-	-	5	5	5	-	-	-
Input	Total PHC expenditure per capita - (real 2008/09 prices)	-	-	-	-	562	611	819	842	28	794
	Non-hospital PHC expenditure per capita - (real 2008/09 prices)	562	-	-	-	446	460	493	505	40	367
	% District health services expenditure on District Management	-	-	-	-	6.0	5.0	4.1	5.4		5.6
	% District health services expenditure on District Hospitals	-	-	-	-	10.6	9.7	26.8	28.1		41.8
	PHC (Non-Hospital) Expenditure per Patient Visit - (real 2008/09 prices)	152	-	-	-	124	142	158	143	15	128
	Cost per PDE - (real 2008/09 prices)	-	-	-	-	742	343	1 197	1 137		1096
Process	Nurse clinical workload	-	-	-	-	-	37.7	40.8	31.3	10	23.3
	Average length of stay (ALOS)	-	-	3.8	3.9	4.2	4.0	4.4	3.7	25	4.3
	Bed utilisation rate (BUR)	-	-	80.3	90.5	92.3	90.2	89.3	86.6	1	66.9
	Clinic supervision rate	-	-	-	-	-	33.1	31.5	45.4	41	61.4
Output	Male condom distribution rate	-	-	15.8	21.4	25.6	46.3	55.2	47.0	1	12.3
	Immunisation coverage < 1 year	-	-	92.6	89.1	88.6	99.1	98.4	103.3	8	89.5
	Immunisation drop-out rate (DTP1-3)	-	-	3.4	6.8	6.8	5.2	7.9	7.7	48	2.7
	Measles Coverage						107.3	101.7	106.5	46	91.8
	Measles drop-out rate						19.9	24.3	26.9	51	16.3
	Caesarean section rate	-	-	28.4	25.1	30.1	31.8	32.5	30.1		16.1
	Proportion ANC clients tested for HIV	-	-	-	-	27.9	95.7	94.7	88.7	32	86.7
	HIV prevalence among ANC clients tested (DHIS)	-	-	-	-	55.2	16.3	16.3	16.7	13	24.3
	HIV prevalence among ANC clients tested (survey)	-	-	-	-	-	17 (15.5-18.4)	16 (11.9-21.3)	17.9 (13.2-23.9)	10	29.3
	Baby PCR test around 6 weeks uptake								-		
	Antenatal client CD4 1st test rate								82.0		
Outcome	Utilisation rate	-	-	3.0	2.9	2.8	2.5	2.4	2.7	21	2.4
	Incidence of STI treated - new	-	-	2.8	3.7	3.2	3.2	2.5	2.5	7	4.6
	TB cure rate (2003 - 2007)	-	-	70	66.9	69.3	76.7	76.5		9	64.0
	TB smear conversion rate (2004 - 2008)	-	-	-	60.0	63.6	71.6	74.8	70.7	13	62.5
	TB case load (new Sm+)	-	-	-	-	-	-	8 991	8 910		138 803
	Delivery rate in facility	-	-	81.5	83.7	88.6	92.9	85.3	99.9	7	86.6
Impact	Stillbirth rate	-	-	17.6	20.0	20.4	21.2	22.6	23.2	36	22.3
	Perinatal mortality rate in facility	-	-	23.9	27.6	28.4	27.4	28.0	28.8	17	31.4

Number of health facilities and beds	Clinic	CHCs	Mobile Service	District Hospital	Regional Hospital	Provincial Tertiary Hospital	Central Hospital	Specialised Hospital	Private hospitals	Beds
Number of public sector facilities (2009) and beds (2009)	110	43	7	7	4	0	3	12		6 357
Number of private sector facilities and beds (2008)									23	3 106

Annual indicators for district: Eden – DC4

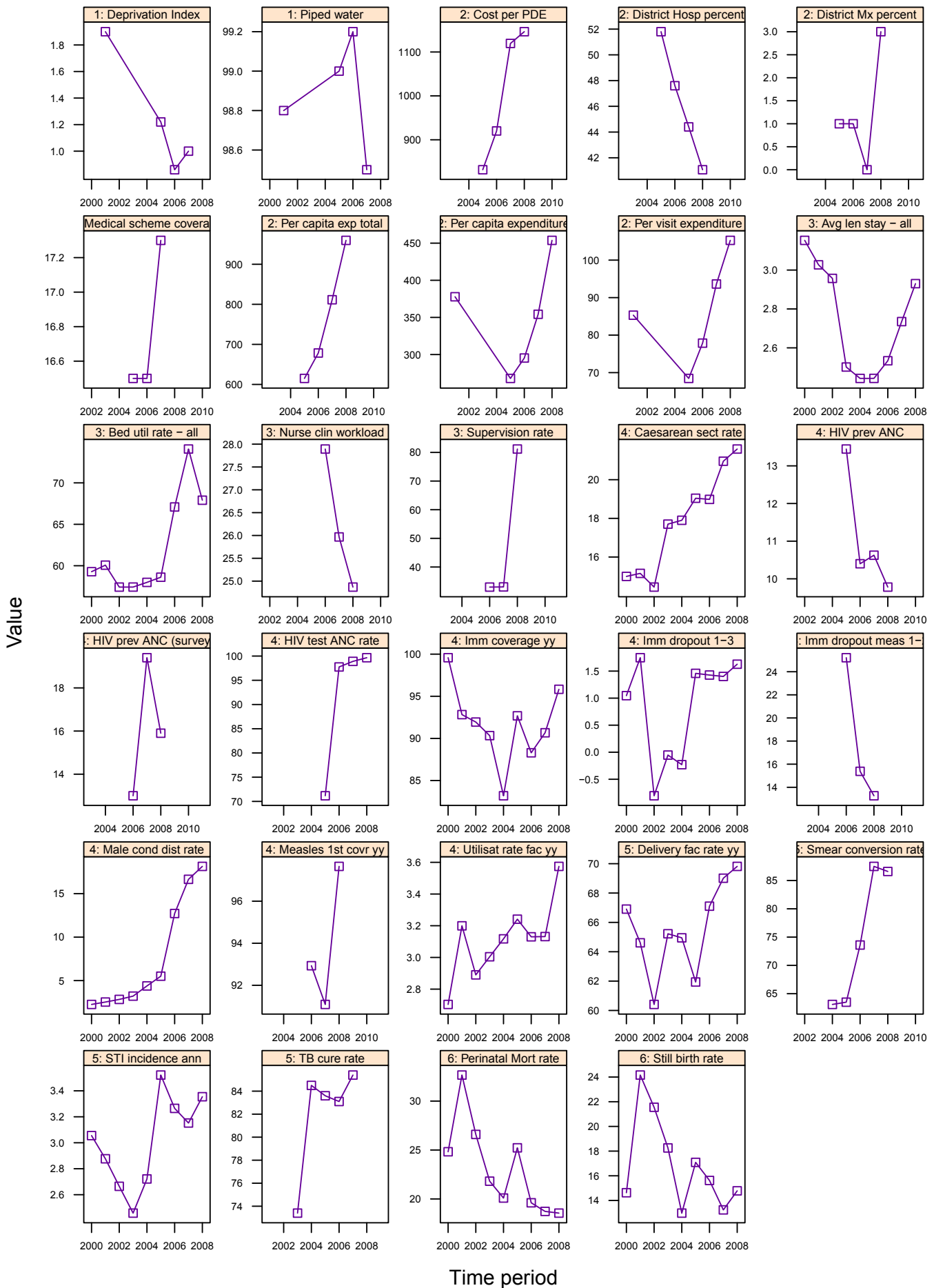


Annual indicators for Eden

DC4	Eden District Municipality	Year								District Rank (1=best)	National value
		2001/02	2002/03	2003/04	2004/05	2005/06	2006/07	2007/08	2008/09		
Demographic and socio-economic	Population total					444 324	454 424	464 491	473 755		48 272 353
	Population Density					-	-	-	20		40
	Medical aid coverage (%)					12.2	13.4	14.9	-	19	14.3
	Access to piped water (%) - (2005-06 GHS, 2007 Comm. Survey)					96.2	97.3	97.7	-	9	88.7
	Deprivation index - (high value = most deprived)	2.02	-	-	-	1.69	1.59	1.31	-	6	-
	Socio-economic quintile - (1=poor, 5=best)	-	-	-	-	5	5	5	-	-	-
Input	Total PHC expenditure per capita - (real 2008/09 prices)	-	-	-	-	846	910	1 017	935	20	794
	Non-hospital PHC expenditure per capita - (real 2008/09 prices)	417	-	-	-	410	416	483	415	45	367
	% District health services expenditure on District Management	-	-	-	-	4.5	5.1	3.5	5.1		5.6
	% District health services expenditure on District Hospitals	-	-	-	-	44.3	41.7	39.8	41.1		41.8
	PHC (Non-Hospital) Expenditure per Patient Visit - (real 2008/09 prices)	83	-	-	-	95	100	109	85	51	128
	Cost per PDE - (real 2008/09 prices)	-	-	-	-	778	1 009	1 027	987		1096
Process	Nurse clinical workload	-	-	-	-	-	33.3	36.6	34.9	4	23.3
	Average length of stay (ALOS)	-	-	3.0	2.9	2.9	3.0	3.1	3.0	13	4.3
	Bed utilisation rate (BUR)	-	-	62.6	74.9	76.2	78.8	81.5	77.1	7	66.9
	Clinic supervision rate	-	-	-	-	-	40.6	59.2	93.9	2	61.4
Output	Male condom distribution rate	-	-	3.8	5.1	7.4	9.8	13.0	18.3	5	12.3
	Immunisation coverage < 1 year	-	-	88.6	97.5	105.1	119.0	118.8	122.1	5	89.5
	Immunisation drop-out rate (DTP1-3)	-	-	3.4	6.0	3.8	5.2	2.9	2.0	24	2.7
	Measles Coverage						130.4	121.5	128.2	52	91.8
	Measles drop-out rate						11.0	11.2	12.6	22	16.3
	Caesarean section rate	-	-	18.9	18.0	18.1	17.7	18.4	16.0		16.1
	Proportion ANC clients tested for HIV	-	-	-	-	72.5	85.6	112.1	93.6	28	86.7
	HIV prevalence among ANC clients tested (DHIS)	-	-	-	-	14.0	11.3	11.2	10.9	8	24.3
	HIV prevalence among ANC clients tested (survey)	-	-	-	-	-	11.5 (8.1-14.8)	13 (8.6-19.3)	13 (8.8-18.8)	4	29.3
	Baby PCR test around 6 weeks uptake								-		
	Antenatal client CD4 1st test rate								102.0		
	Utilisation rate	-	-	3.6	3.6	3.7	3.6	3.8	4.2	1	2.4
	Outcome	Incidence of STI treated - new	-	-	2.8	2.8	2.6	2.7	2.8	3.1	15
TB cure rate (2003 - 2007)		-	-	77.9	81.8	78.3	80.6	80.2		3	64.0
TB smear conversion rate (2004 - 2008)		-	-		63.7	61.4	63.8	63.8	69.8	16	62.5
TB case load (new Sm+)		-	-	-	-	-	-	2 305	2 369		138 803
Delivery rate in facility		-	-	89.5	96.4	102.0	108.6	105.3	105.0	3	86.6
Impact	Stillbirth rate	-	-	22.2	19.8	27.3	20.5	18.0	18.4	12	22.3
	Perinatal mortality rate in facility	-	-	26.6	25.4	32.7	25.7	22.9	24.2	9	31.4

Number of health facilities and beds	Clinic	CHCs	Mobile Service	District Hospital	Regional Hospital	Provincial Tertiary Hospital	Central Hospital	Specialised Hospital	Private hospitals	Beds
Number of public sector facilities (2009) and beds (2009)	32	6	24	6	1	0	0	1		774
Number of private sector facilities and beds (2008)									5	397

Annual indicators for district: Overberg – DC3

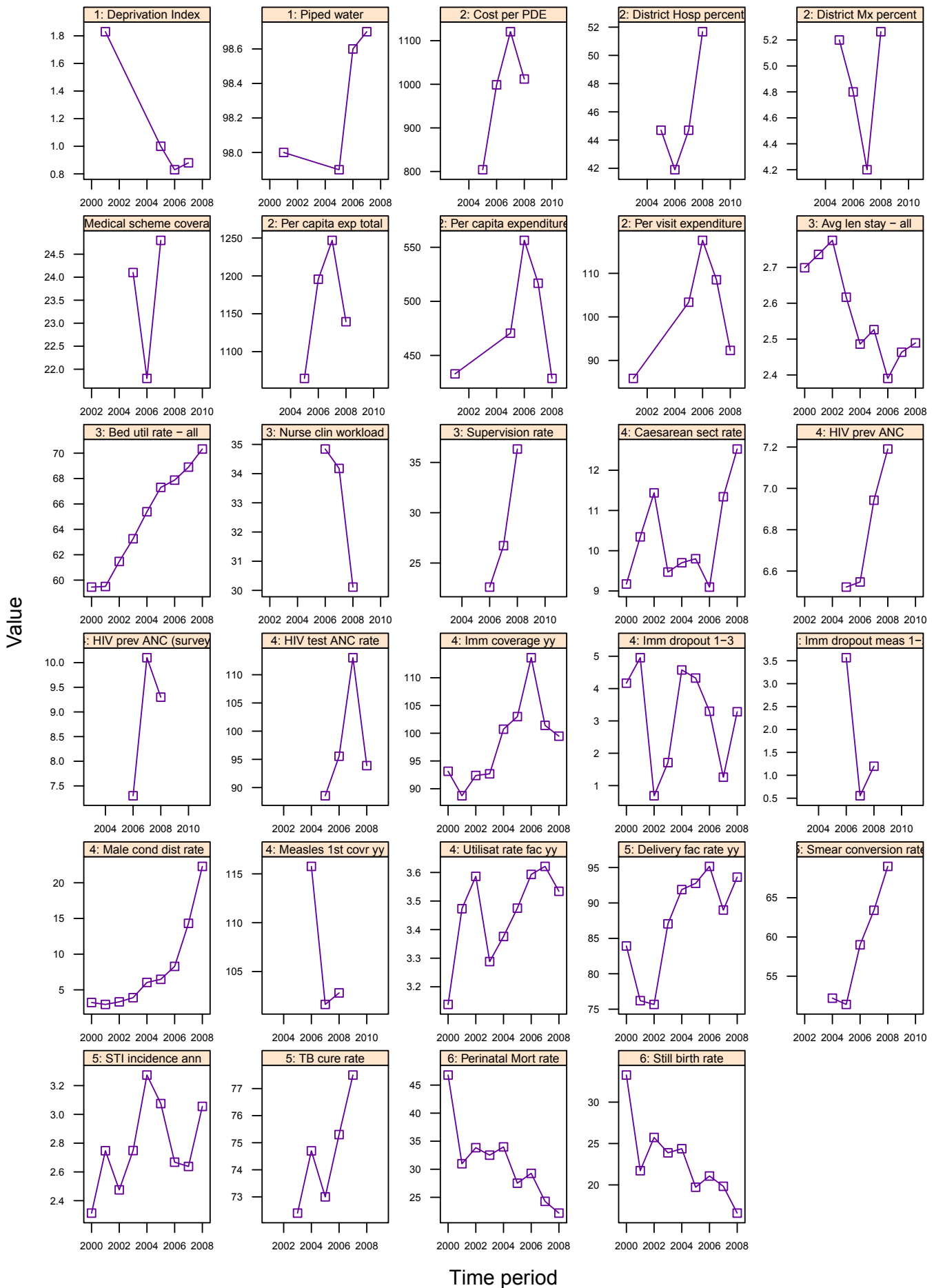


Annual indicators for Overberg

DC3	Overberg District Municipality	Year								District Rank (1=best)	National value
		2001/02	2002/03	2003/04	2004/05	2005/06	2006/07	2007/08	2008/09		
Demographic and socio-economic	Population total					194 695	200 213	205 910	211 230		48 272 353
	Population Density					-	-	-	19		40
	Medical aid coverage (%)					16.5	16.5	17.3	-	14	14.3
	Access to piped water (%) - (2005-06 GHS, 2007 Comm. Survey)					99.0	99.2	98.5	-	5	88.7
	Deprivation index - (high value = most deprived)	1.90	-	-	-	1.22	0.86	1.00	-	3	-
	Socio-economic quintile - (1=poor, 5=best)	-	-	-	-	5	5	5	-	-	-
Input	Total PHC expenditure per capita - (real 2008/09 prices)	-	-	-	-	615	678	811	960	16	794
	Non-hospital PHC expenditure per capita - (real 2008/09 prices)	378	-	-	-	268	295	354	454	5	367
	% District health services expenditure on District Management	-	-	-	-	1.0	1.0	0.0	3.0		5.6
	% District health services expenditure on District Hospitals	-	-	-	-	51.8	47.6	44.4	41.1		41.8
	PHC (Non-Hospital) Expenditure per Patient Visit - (real 2008/09 prices)	85	-	-	-	68	78	94	105	43	128
	Cost per PDE - (real 2008/09 prices)	-	-	-	-	832	920	1 119	1 146		1096
Process	Nurse clinical workload	-	-	-	-	-	27.9	26.0	24.9	21	23.3
	Average length of stay (ALOS)	-	-	2.5	2.4	2.4	2.5	2.7	2.9	12	4.3
	Bed utilisation rate (BUR)	-	-	57.4	58.0	58.6	67.1	74.1	67.9	28	66.9
	Clinic supervision rate	-	-	-	-	-	33.0	33.0	81.2	7	61.4
Output	Male condom distribution rate	-	-	3.2	4.4	5.5	12.7	16.6	18.1	6	12.3
	Immunisation coverage < 1 year	-	-	90.3	83.2	92.7	88.3	90.7	95.8	16	89.5
	Immunisation drop-out rate (DTP1-3)	-	-	-0.1	-0.2	1.5	1.4	1.4	1.6	21	2.7
	Measles Coverage						92.9	91.1	97.7	40	91.8
	Measles drop-out rate						25.2	15.4	13.3	25	16.3
	Caesarean section rate	-	-	17.7	17.9	19.0	19.0	21.0	21.6		16.1
	Proportion ANC clients tested for HIV	-	-	-	-	71.2	97.8	98.9	99.7	13	86.7
	HIV prevalence among ANC clients tested (DHIS)	-	-	-	-	13.4	10.4	10.6	9.8	7	24.3
	HIV prevalence among ANC clients tested (survey)	-	-	-	-	-	13 (7.5-18.5)	19.4 (14-26.2)	15.9 (10.3-23.8)	9	29.3
	Baby PCR test around 6 weeks uptake										
	Antenatal client CD4 1st test rate								104.6		
	Outcome	Utilisation rate	-	-	3.0	3.1	3.2	3.1	3.1	3.6	7
Incidence of STI treated - new		-	-	2.5	2.7	3.5	3.3	3.2	3.4	17	4.6
TB cure rate (2003 - 2007)		-	-	73.4	84.5	83.6	83.1	85.4		1	64.0
TB smear conversion rate (2004 - 2008)		-	-		63.1	63.5	73.6	87.5	86.6	1	62.5
TB case load (new Sm+)		-	-	-	-	-	-	817	736		138 803
Impact	Delivery rate in facility	-	-	65.2	64.9	61.9	67.1	69.0	69.8	40	86.6
	Stillbirth rate	-	-	18.3	13.0	17.1	15.6	13.2	14.8	1	22.3
	Perinatal mortality rate in facility	-	-	21.8	20.1	25.2	19.6	18.7	18.6	1	31.4

Number of health facilities and beds	Clinic	CHCs	Mobile Service	District Hospital	Regional Hospital	Provincial Tertiary Hospital	Central Hospital	Specialised Hospital	Private hospitals	Beds
Number of public sector facilities (2009) and beds (2009)	29	1	14	4	0	0	0	0		202
Number of private sector facilities and beds (2008)									1	45

Annual indicators for district: West Coast – DC1



Annual indicators for West Coast

DC1	West Coast District Municipality	Year								District Rank (1=best)	National value
		2001/02	2002/03	2003/04	2004/05	2005/06	2006/07	2007/08	2008/09		
Demographic and socio-economic	Population total					271 408	278 199	285 099	291 403		48 272 353
	Population Density					-	-	-	9		40
	Medical aid coverage (%)					24.1	21.8	24.8	-	2	14.3
	Access to piped water (%) - (2005-06 GHS, 2007 Comm. Survey)					97.9	98.6	98.7	-	4	88.7
	Deprivation index - (high value = most deprived)	1.83	-	-	-	1.00	0.83	0.88	-	1	-
	Socio-economic quintile - (1=poor, 5=best)	-	-	-	-	5	5	5	-	-	-
Input	Total PHC expenditure per capita - (real 2008/09 prices)	-	-	-	-	1 065	1 196	1 247	1 140	6	794
	Non-hospital PHC expenditure per capita - (real 2008/09 prices)	433	-	-	-	471	556	517	429	50	367
	% District health services expenditure on District Management	-	-	-	-	5.2	4.8	4.2	5.3		5.6
	% District health services expenditure on District Hospitals	-	-	-	-	44.7	41.9	44.7	51.7		41.8
	PHC (Non-Hospital) Expenditure per Patient Visit - (real 2008/09 prices)	86	-	-	-	103	118	109	92	50	128
	Cost per PDE - (real 2008/09 prices)	-	-	-	-	804	999	1 121	1 012		1096
Process	Nurse clinical workload	-	-	-	-	-	34.8	34.2	30.1	13	23.3
	Average length of stay (ALOS)	-	-	2.6	2.5	2.5	2.4	2.5	2.5	6	4.3
	Bed utilisation rate (BUR)	-	-	63.3	65.4	67.3	67.9	68.9	70.3	21	66.9
	Clinic supervision rate	-	-	-	-	-	22.6	26.7	36.3	47	61.4
Output	Male condom distribution rate	-	-	3.9	6.0	6.5	8.3	14.3	22.3	3	12.3
	Immunisation coverage < 1 year	-	-	92.7	100.7	103.0	113.6	101.4	99.5	13	89.5
	Immunisation drop-out rate (DTP1-3)	-	-	1.7	4.6	4.3	3.3	1.3	3.3	28	2.7
	Measles Coverage						115.8	101.6	102.8	43	91.8
	Measles drop-out rate						3.6	0.6	1.2	1	16.3
	Caesarean section rate	-	-	9.5	9.7	9.8	9.1	11.3	12.5		16.1
	Proportion ANC clients tested for HIV	-	-	-	-	88.5	95.6	113.0	93.9	27	86.7
	HIV prevalence among ANC clients tested (DHIS)	-	-	-	-	6.5	6.5	6.9	7.2	3	24.3
	HIV prevalence among ANC clients tested (survey)	-	-	-	-	-	7.3 (4-10.7)	10.1 (7.2-14.2)	9.3 (6.2-13.6)	2	29.3
	Baby PCR test around 6 weeks uptake								-		
	Antenatal client CD4 1st test rate								118.1		
	Utilisation rate	-	-	3.3	3.4	3.5	3.6	3.6	3.5	8	2.4
Outcome	Incidence of STI treated - new	-	-	2.7	3.3	3.1	2.7	2.6	3.1	13	4.6
	TB cure rate (2003 - 2007)	-	-	72.4	74.7	73.0	75.3	77.5		7	64.0
	TB smear conversion rate (2004 - 2008)	-	-		52.2	51.4	59.0	63.4	69.0	17	62.5
	TB case load (new Sm+)	-	-	-	-	-	-	1 421	1 312		138 803
	Delivery rate in facility	-	-	87.0	91.9	92.8	95.2	89.0	93.6	14	86.6
Impact	Stillbirth rate	-	-	23.9	24.4	19.7	21.1	19.8	16.6	7	22.3
	Perinatal mortality rate in facility	-	-	32.5	34.0	27.5	29.3	24.3	22.2	4	31.4

Number of health facilities and beds	Clinic	CHCs	Mobile Service	District Hospital	Regional Hospital	Provincial Tertiary Hospital	Central Hospital	Specialised Hospital	Private hospitals	Beds
Number of public sector facilities (2009) and beds (2009)	28	2	24	7	0	0	0	1		413
Number of private sector facilities and beds (2008)									1	46