

Eastern Cape Province

The Eastern Cape Province has a population of slightly less than 7.1 million people, the third highest in the country. It has one metro, Nelson Mandela Bay Metro, which accounts for 16% of the provincial population.

Eastern Cape Province's Deprivation Index scores varied widely between its seven districts, with Nelson Mandela Bay Metro being the least deprived and the mostly rural O.R. Tambo and Alfred Nzo districts being the most deprived. Widespread deprivation in many sub-districts is evidenced by six out of the 18 priority sub-districts being from the Eastern Cape. The province is ranked the lowest in SA (70.8%) in the percentage of households with access to piped water, with huge differences between sub-districts.

In 2008/09 the province had the fourth lowest total PHC expenditure per capita (R782)⁶³. The non-hospital per capita expenditure had increased in real terms by an annual compound growth rate of 10.9% per year since 2005/06 to R368 in 2008/09. Inter-district values for total PHC expenditure per capita varied widely from R543 (O.R. Tambo) to R1076 in Cacadu, one of the country's top ten expenditures. The non-hospital cost per patient visit to a primary health care facility was R132 and varied from a high of R167 in Ukhahlamba to a low of R94 in Nelson Mandela Bay Metro, and it appears that lower costs per patient are associated with higher PHC utilisation rates and nurse clinical workload.

According to DHIS records, the province has 61 district hospitals with some 6013 usable beds. The percentage of District Health Services expenditure on these hospitals has decreased from 47.0% in 2005/06 to 42.2% in 2008/09, marginally above the national average of 41.8%. The cost per patient day equivalent in district hospitals was R993 in 2008/09, the second lowest in the country. The average length of stay in a district hospital was 5.3 days in 2008/09, the second highest of the nine provinces. Individual district values ranged from 3.5 days (Nelson Mandela Bay Metro) to 7.4 days in O.R. Tambo District, the highest in the country. The average bed utilisation rate (BUR) of 68.8% ranges from 60.1% in Cacadu to 83.5% in Ukhahlamba, the second highest value in the country.

The average PHC facility utilisation rate was 2.6 visits per person year in 2008/09, above the national average of 2.4 but below the national target of 3.5. The average clinic supervision rate in the province improved significantly from 48.2% in 2007/08, to 73.7% in 2008/09, an overall improvement of 25.5 percentage points. Chris Hani district at 84.8% had the fifth highest supervision rate in the country.

The province's TB cure rate has improved from 40.8% to 62.0% between 2004 and 2007, but was still below the SA average of 64%, with districts ranging from 54.8% (Amathole) to 73.6% (Cacadu). The smear conversion rate has improved from 37.3% in 2004/05 to 58.1% 2008/09, although this is also below the national average of 62.5%. Districts values vary from Alfred Nzo with the lowest rate in the country at 40.7% to Chris Hani at 77.3%. In 2008 the province had the second highest incidence (357.2 new smear positive cases per 100 000 people) in the country, an increase from the 331.6 cases per 100 000 in 2007.

In 2008 the Eastern Cape's HIV/AIDS prevalence rate, according to the national ANC survey, was 27.6%⁴¹. Alfred Nzo district had the highest HIV prevalence at 29.8%, up from 24.8% in 2007. The current DHB has replaced the previous nevirapine-related indicators reported on with two of the new PMTCT/ART indicators, 'Baby PCR test around six weeks uptake' and 'Antenatal client CD4 1st test rate'. Available data is still incomplete as this is the first year of measurement in the DHIS.

The Eastern Cape distributed an average of 10.7 condoms per male 15 years and older in 2008/09, which is below the national average of 12.3. Condom distribution in districts varied from a low of 6.9 condoms in Nelson Mandela Bay Metro to a high of 20.1 condoms per man per year in Ukhahlamba. It is interesting to note that although Nelson Mandela Bay Metro had the lowest condom distribution rate in the province, it also has the lowest incidence of STIs at 2.9%. The province's average STI incidence was 4.5%, with Alfred Nzo district registering the province's highest incidence at 6.2%.

The province's Caesarean section rate at 12.0% was the second lowest rate in the country. District values varied from 8.1% in Amathole district to 32.8% in Nelson Mandela Bay Metro, the highest in the country. The Eastern Cape's delivery rate in facility of 71.0% was the lowest in the country in 2008/09, although at district level it varied from a low of 61.1% in Chris Hani to a high of 105.3% in Nelson Mandela Bay Metro.

The immunisation coverage in 2008/09 was 84.3%, which is below the national average of 89.5% and the national target of 90%, but is an improvement since the 67.9% achieved in 2004/05. Analysis of the coverage rates for the districts with the greatest change since 2007/08 (Alfred Nzo down to 70.9% and

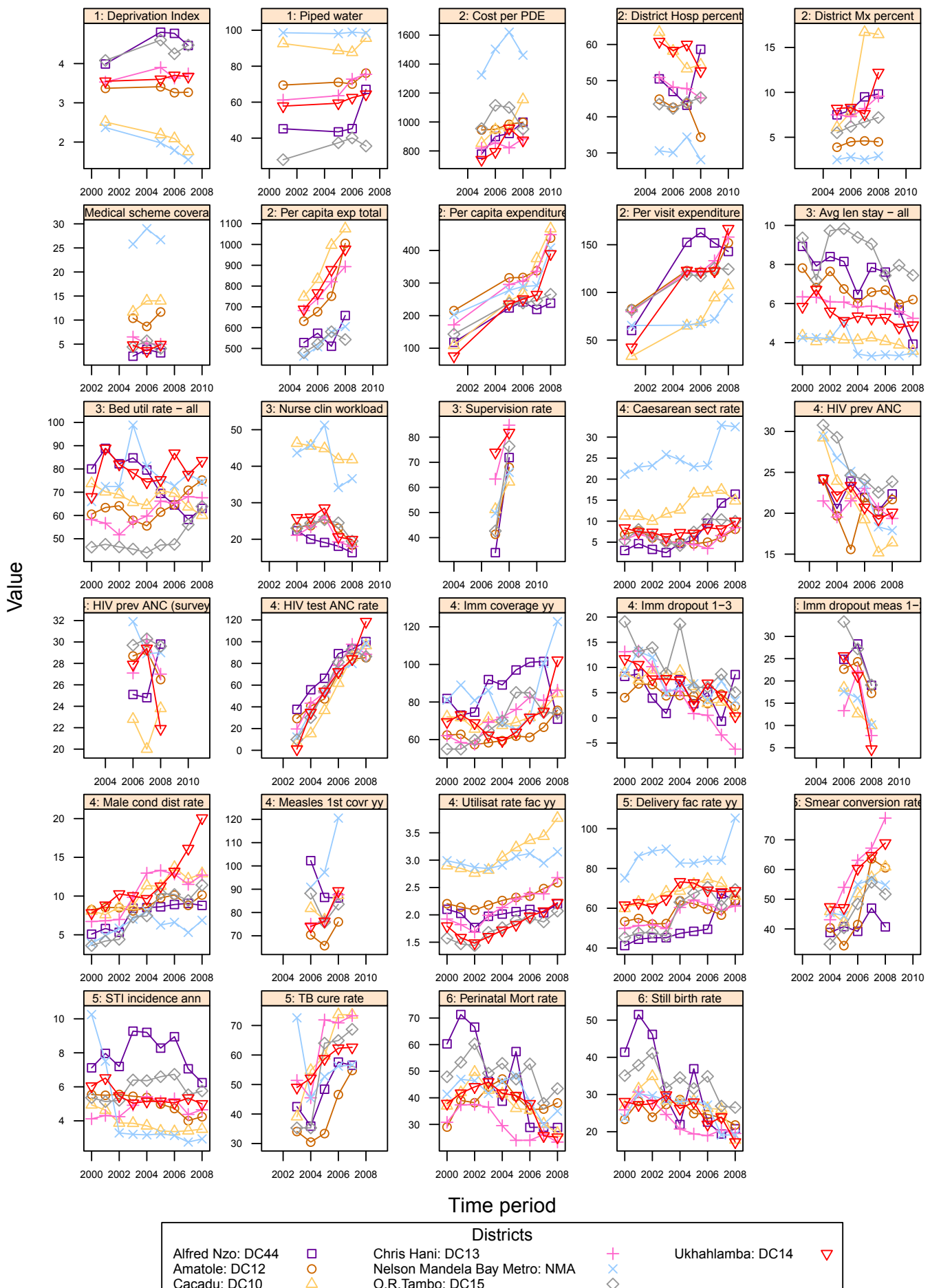
⁶³ Figures are in REAL prices that have been adjusted for the effects of inflation to 2008/09 prices.

Ukhahlamba up to 102.2%) suggests that a few facilities⁶⁴ are the big drivers of the large change in indicator value. The drop-out rate from DTP1 to DTP3 in the province was 2.7%, matching the national average. District values varied widely from -6.2% (the third lowest of all 52 districts) to 8.6% in Alfred Nzo, the third highest value in the country. The province achieved a Measles 1st dose coverage of 87.7%, which is over a ten percentage point improvement on the 2007/08 rate. The Measles drop-out rate at 16.3% was also a noticeable improvement on the 2007/08 rate of 21.1%, with Ukhahlamba district's 4.7% being the third lowest rate in the country.

The stillbirth rate (21.8 per 1000 births) has been dropping annually from 28.7 per 1000 in 2003/04. The province's perinatal mortality rate (PNMR) of 35.5 per 1000 births was the second highest in the country and has fluctuated somewhat over the last five years. O.R. Tambo district had the highest PNMR value (43.5/1000) in the country which warrants investigation.

⁶⁴ In Ukhahlamba district, Empilisweni Hospital started collecting a lot of Immunisation data, suggesting that the hospital either wasn't reporting previously or this is some sort of error. In Alfred Nzo district two facilities (Maluti CHC and Matatiele Municipality Clinic) had their numbers drop off noticeably.

Annual indicators for districts in Eastern Cape (EC)

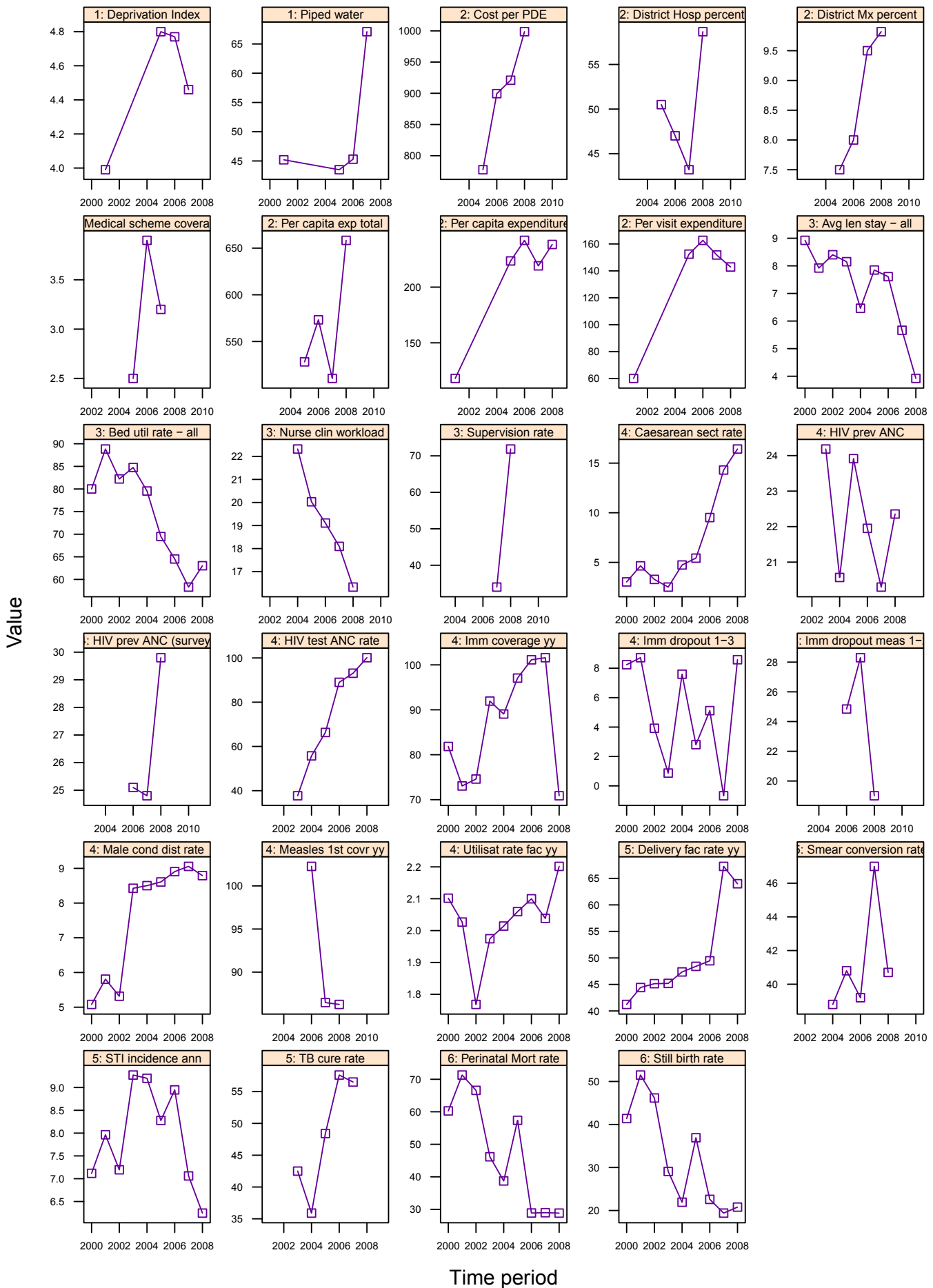


Annual indicators for Eastern Cape Province

EC	Eastern Cape	Year								District Rank (1=best)	National value	
		2001/02	2002/03	2003/04	2004/05	2005/06	2006/07	2007/08	2008/09			
Demographic and socio-economic	Population total					7 039 650	7 051 540	7 074 055	7 084 923		48 272 353	
	Population Density					-	-	-	42		40	
	Medical aid coverage (%)					9.8	10.2	10.9	-		14.3	
	Access to piped water (%) - (2005-06 GHS, 2007 Comm. Survey)					65.4	67.3	70.8	-		88.7	
	Deprivation index - (high value = most deprived)	-	-	-	-	-	-	-	-	-	-	-
	Socio-economic quintile - (1=poor, 5=best)	-	-	-	-	-	-	-	-	-	-	-
Input	Total PHC expenditure per capita - (real 2008/09 prices)	-	-	-	-	575	625	689	782		794	
	Non-hospital PHC expenditure per capita - (real 2008/09 prices)	168	-	-	-	270	278	294	368		367	
	% District health services expenditure on District Management	-	-	-	-	5.5	6.0	7.0	7.5		5.6	
	% District health services expenditure on District Hospitals	-	-	-	-	47.0	44.8	45.3	42.2		41.8	
	PHC (Non-Hospital) Expenditure per Patient Visit - (real 2008/09 prices)	72	-	-	-	106	107	113	132		128	
	Cost per PDE - (real 2008/09 prices)	-	-	-	-	895	968	989	993		1096	
Process	Nurse clinical workload	-	-	-	26.6	27.6	29.4	25.0	21.8		23.3	
	Average length of stay (ALOS)	-	-	6.4	5.9	6.1	5.9	5.6	5.3		4.3	
	Bed utilisation rate (BUR)	-	-	59.7	57.8	61.3	62.6	65.5	68.8		66.9	
	Clinic supervision rate	-	-	-	-	-	-	48.2	73.7		61.4	
Output	Male condom distribution rate	-	-	8.1	9.0	9.8	10.2	9.3	10.7		12.3	
	Immunisation coverage < 1 year	-	-	68.9	67.9	73.4	75.7	78.9	84.3		89.5	
	Immunisation drop-out rate (DTP1-3)	-	-	6.0	9.9	4.7	4.0	4.8	2.7		2.7	
	Measles Coverage						82.0	77.1	87.7		91.8	
	Measles drop-out rate						24.0	22.8	14.3		16.3	
	Caesarean section rate	-	-	7.4	7.3	8.2	9.6	11.4	12.0		16.1	
	Proportion ANC clients tested for HIV	-	-	17.3	36.5	52.1	75.9	88.3	91.1		86.7	
	HIV prevalence among ANC clients tested (DHIS)	-	-	25.7	23.5	22.1	22.8	20.3	21.2		24.3	
	HIV prevalence among ANC clients tested (survey)	-	-	-	-	-	28.6 (26.8-30.4)	28.8 (26.9-30.7)	27.6 (25.6-29.6)		29.3	
	Baby PCR test around 6 weeks uptake								81.2			
	Antenatal client CD4 1st test rate								7.5			
	Utilisation rate	-	-	2.1	2.2	2.3	2.4	2.4	2.6		2.4	
Outcome	Incidence of STI treated - new	-	-	5.3	5.3	5.2	5.2	4.4	4.5		4.6	
	TB cure rate (2003 - 2007)	-	-	50.7	40.8	53.7	59.6	62.0			64.0	
	TB smear conversion rate (2004 - 2008)	-	-	-	37.3	41.8	49.9	58.9	58.1		62.5	
	TB case load (new Sm+)	-	-	-	-	-	-	23 459	25 304		138 803	
	Delivery rate in facility	-	-	56.5	65.6	67.3	67.3	65.3	71.0		86.6	
Impact	Stillbirth rate	-	-	28.7	28.6	27.4	27.2	23.2	21.8		22.3	
	Perinatal mortality rate in facility	-	-	44.0	45.3	42.3	39.4	32.5	35.5		31.4	

Number of health facilities and beds	Clinic	CHCs	Mobile Service	District Hospital	Regional Hospital	Provincial Tertiary Hospital	Central Hospital	Specialised Hospital	Private hospitals	Beds
Number of public sector facilities (2009) and beds (2009)	711	33	149	61	2	7	0	20		9 480
Number of private sector facilities and beds (2008)									14	1 488

Annual indicators for district: Alfred Nzo – DC44

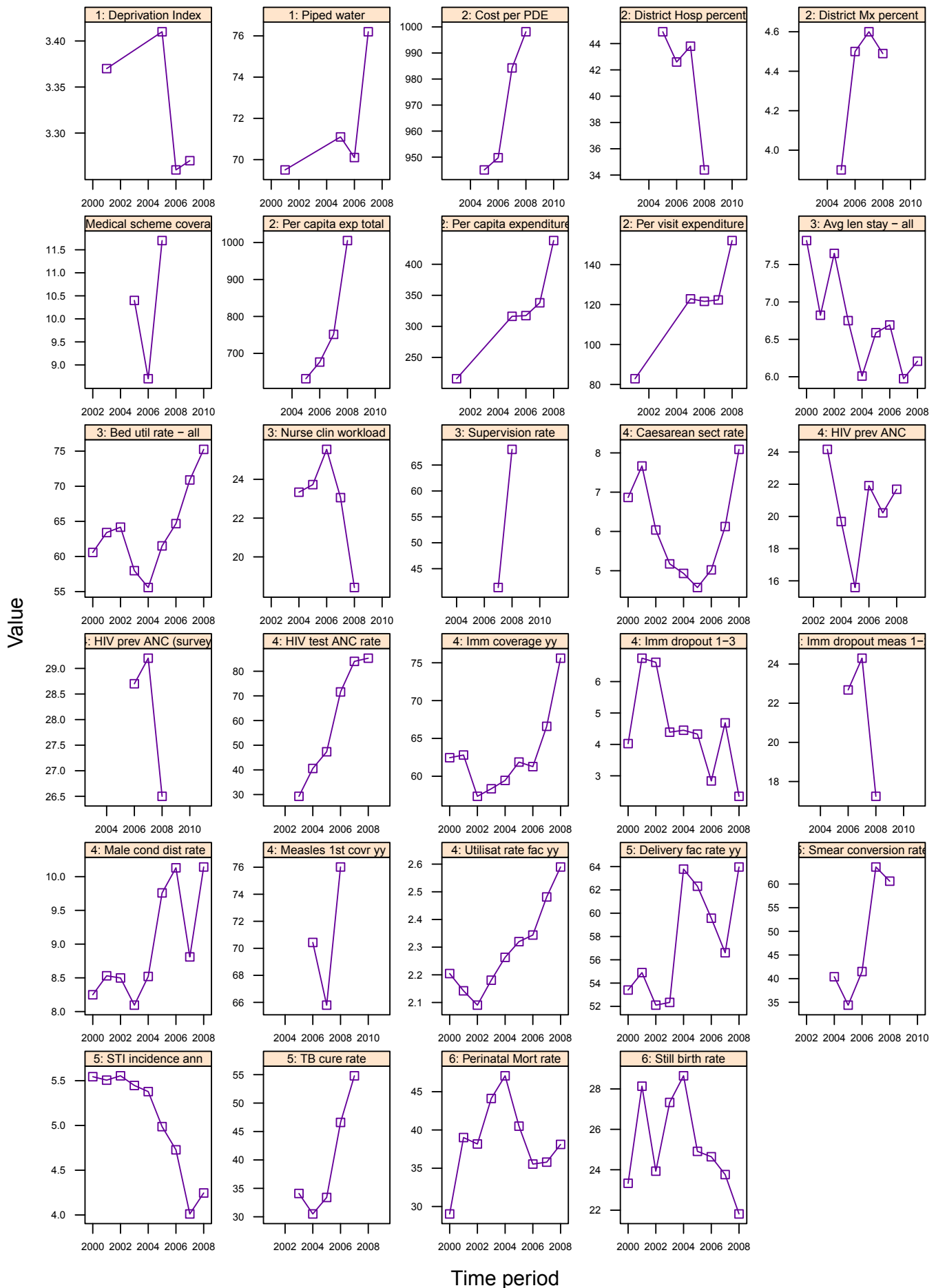


Annual indicators for Alfred Nzo District Municipality

DC44	Alfred Nzo District Municipality	Year								District Rank (1=best)	National value
		2001/02	2002/03	2003/04	2004/05	2005/06	2006/07	2007/08	2008/09		
Demographic and socio-economic	Population total					624 794	627 575	632 022	635 164		48 272 353
	Population Density					-	-	-	93		40
	Medical aid coverage (%)					2.5	3.9	3.2	-	52	14.3
	Access to piped water (%) - (2005-06 GHS, 2007 Comm. Survey)					43.5	45.3	67.1	-	44	88.7
	Deprivation index - (high value = most deprived)	3.99	-	-	-	4.80	4.77	4.46	-	49	-
	Socio-economic quintile - (1=poor, 5=best)	-	-	-	-	1	1	1	-	-	-
Input	Total PHC expenditure per capita - (real 2008/09 prices)	-	-	-	-	528	573	510	658	39	794
	Non-hospital PHC expenditure per capita - (real 2008/09 prices)	118	-	-	-	224	242	219	238	44	367
	% District health services expenditure on District Management	-	-	-	-	7.5	8.0	9.5	9.8		5.6
	% District health services expenditure on District Hospitals	-	-	-	-	50.5	47.0	43.2	58.7		41.8
	PHC (Non-Hospital) Expenditure per Patient Visit - (real 2008/09 prices)	60	-	-	-	152	163	152	143	14	128
	Cost per PDE - (real 2008/09 prices)	-	-	-	-	778	899	921	999		1096
Process	Nurse clinical workload	-	-	-	22.3	20.0	19.1	18.1	16.3	47	23.3
	Average length of stay (ALOS)	-	-	8.2	6.5	7.8	7.6	5.7	3.9	27	4.3
	Bed utilisation rate (BUR)	-	-	84.8	79.6	69.5	64.5	58.3	63.0	37	66.9
	Clinic supervision rate	-	-	-	-	-	-	34.0	71.9	18	61.4
Output	Male condom distribution rate	-	-	8.4	8.5	8.6	8.9	9.1	8.8	30	12.3
	Immunisation coverage < 1 year	-	-	91.9	89.1	97.1	101.1	101.6	70.9	49	89.5
	Immunisation drop-out rate (DTP1-3)	-	-	0.9	7.6	2.8	5.1	-0.7	8.6	50	2.7
	Measles Coverage						102.3	86.5	86.3	18	91.8
	Measles drop-out rate						24.8	28.3	19.0	41	16.3
	Caesarean section rate	-	-	2.5	4.7	5.4	9.5	14.3	16.4		16.1
	Proportion ANC clients tested for HIV	-	-	37.7	55.7	66.3	89.0	93.1	100.1	12	86.7
	HIV prevalence among ANC clients tested (DHIS)	-	-	24.2	20.6	23.9	22.0	20.3	22.4	25	24.3
	HIV prevalence among ANC clients tested (survey)	-	-	-	-	-	25.1 (20.7-29.5)	24.8 (20.9-29.3)	29.8 (22.3-38.6)	30	29.3
	Baby PCR test around 6 weeks uptake								52.9		
	Antenatal client CD4 1st test rate								0.0		
	Utilisation rate	-	-	2.0	2.0	2.1	2.1	2.0	2.2	34	2.4
Outcome	Incidence of STI treated - new	-	-	9.3	9.2	8.3	8.9	7.1	6.2	42	4.6
	TB cure rate (2003 - 2007)	-	-	42.5	35.9	48.4	57.6	56.5		39	64.0
	TB smear conversion rate (2004 - 2008)	-	-		38.8	40.8	39.2	47.0	40.7	52	62.5
	TB case load (new Sm+)	-	-	-	-	-	-	1 284	2 144		138 803
	Delivery rate in facility	-	-	45.2	47.4	48.4	49.5	67.3	64.0	46	86.6
Impact	Stillbirth rate	-	-	29.1	21.9	30.3	22.6	19.4	20.8	20	22.3
	Perinatal mortality rate in facility	-	-	46.2	38.7	57.4	28.9	29.0	28.8	18	31.4

Number of health facilities and beds	Clinic	CHCs	Mobile Service	District Hospital	Regional Hospital	Provincial Tertiary Hospital	Central Hospital	Specialised Hospital	Private hospitals	Beds
Number of public sector facilities (2009) and beds (2009)	47	2	6	4	0	0	0	1		903
Number of private sector facilities and beds (2008)									0	0

Annual indicators for district: Amatole – DC12

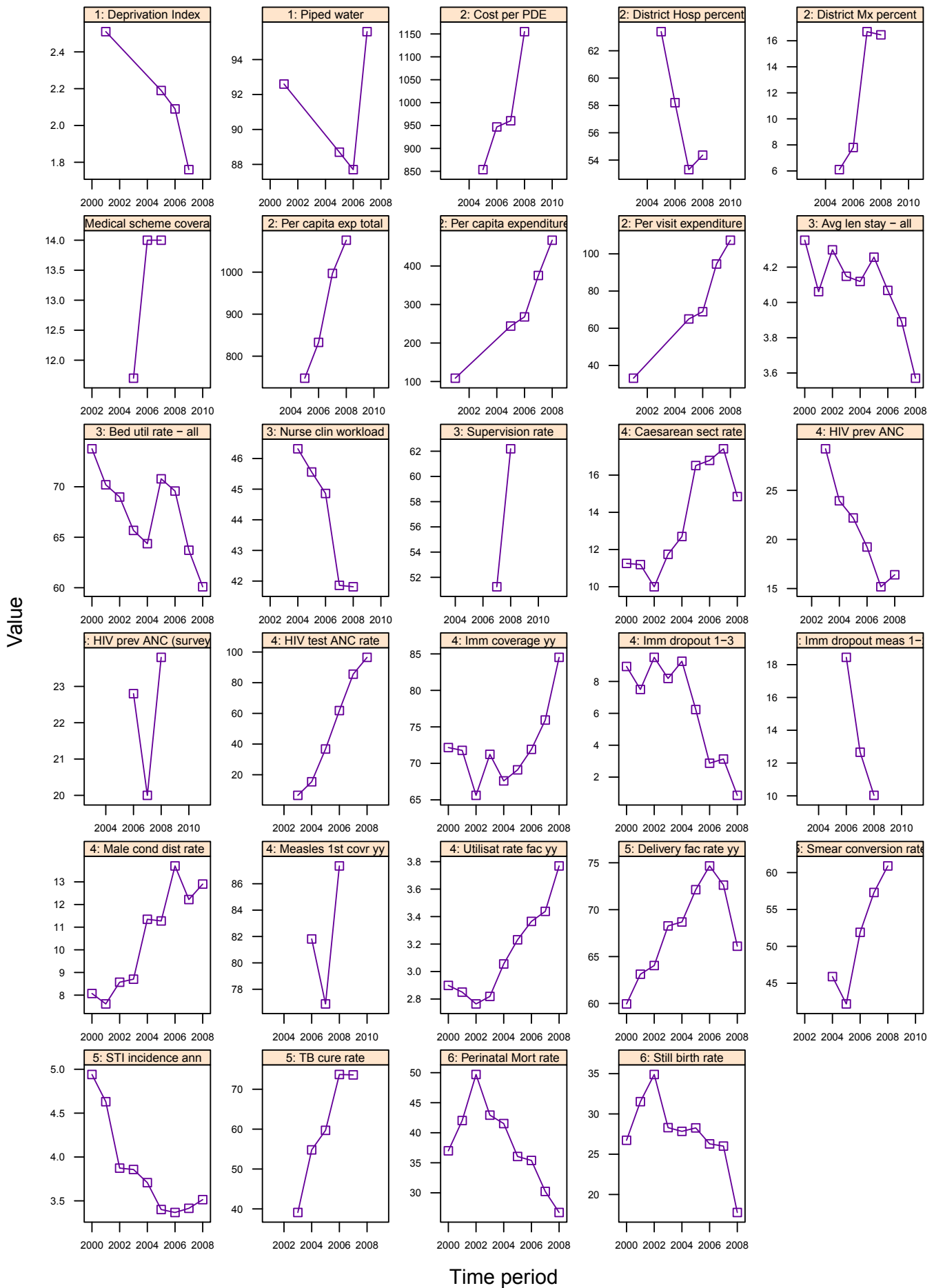


Annual indicators for Amathole District Municipality

DC12	Amathole District Municipality	Year								District Rank (1=best)	National value
		2001/02	2002/03	2003/04	2004/05	2005/06	2006/07	2007/08	2008/09		
Demographic and socio-economic	Population total					1 861 961	1 857 529	1 860 128	1 858 921		48 272 353
	Population Density					-	-	-	79		40
	Medical aid coverage (%)					10.4	8.7	11.7	-	30	14.3
	Access to piped water (%) - (2005-06 GHS, 2007 Comm. Survey)					71.1	70.1	76.2	-	39	88.7
	Deprivation index - (high value = most deprived)	3.37	-	-	-	3.41	3.26	3.27	-	34	-
	Socio-economic quintile - (1=poor, 5=best)	-	-	-	-	2	2	2	-	-	-
Input	Total PHC expenditure per capita - (real 2008/09 prices)	-	-	-	-	631	677	752	1 005	12	794
	Non-hospital PHC expenditure per capita - (real 2008/09 prices)	216	-	-	-	316	317	338	438	20	367
	% District health services expenditure on District Management	-	-	-	-	3.9	4.5	4.6	4.5		5.6
	% District health services expenditure on District Hospitals	-	-	-	-	44.9	42.6	43.8	34.4		41.8
	PHC (Non-Hospital) Expenditure per Patient Visit - (real 2008/09 prices)	83	-	-	-	123	122	122	152	11	128
	Cost per PDE - (real 2008/09 prices)	-	-	-	-	945	950	984	998		1096
Process	Nurse clinical workload	-	-	-	23.3	23.7	25.5	23.1	18.4	43	23.3
	Average length of stay (ALOS)	-	-	6.8	6.0	6.6	6.7	6.0	6.2	48	4.3
	Bed utilisation rate (BUR)	-	-	58.0	55.6	61.5	64.7	70.9	75.2	11	66.9
	Clinic supervision rate	-	-	-	-	-	-	41.4	68.0	23	61.4
Output	Male condom distribution rate	-	-	8.1	8.5	9.8	10.1	8.8	10.1	23	12.3
	Immunisation coverage < 1 year	-	-	58.3	59.4	61.9	61.3	66.6	75.6	44	89.5
	Immunisation drop-out rate (DTP1-3)	-	-	4.4	4.5	4.3	2.8	4.7	2.3	25	2.7
	Measles Coverage						70.4	65.8	76.0	4	91.8
	Measles drop-out rate						22.7	24.3	17.2	37	16.3
	Caesarean section rate	-	-	5.2	4.9	4.6	5.0	6.1	8.1		16.1
	Proportion ANC clients tested for HIV	-	-	29.3	40.6	47.3	71.6	84.0	85.3	39	86.7
	HIV prevalence among ANC clients tested (DHIS)	-	-	24.2	19.7	15.6	21.9	20.2	21.7	22	24.3
	HIV prevalence among ANC clients tested (survey)	-	-	-	-	-	28.7 (26-31.5)	29.2 (26.5-32)	26.5 (23-30.3)	21	29.3
	Baby PCR test around 6 weeks uptake								71.1		
	Antenatal client CD4 1st test rate								1.1		
	Utilisation rate	-	-	2.2	2.3	2.3	2.3	2.5	2.6	25	2.4
Outcome	Incidence of STI treated - new	-	-	5.4	5.4	5.0	4.7	4.0	4.2	27	4.6
	TB cure rate (2003 - 2007)	-	-	34.1	30.5	33.4	46.6	54.8		41	64.0
	TB smear conversion rate (2004 - 2008)	-	-	-	40.4	34.4	41.5	63.6	60.6	29	62.5
	TB case load (new Sm+)	-	-	-	-	-	-	5 958	6 847		138 803
	Delivery rate in facility	-	-	52.3	63.8	62.3	59.6	56.6	64.0	47	86.6
Impact	Stillbirth rate	-	-	27.3	28.6	24.9	24.6	23.8	21.8	27	22.3
	Perinatal mortality rate in facility	-	-	44.1	47.1	40.5	35.5	35.8	38.1	42	31.4

Number of health facilities and beds	Clinic	CHCs	Mobile Service	District Hospital	Regional Hospital	Provincial Tertiary Hospital	Central Hospital	Specialised Hospital	Private hospitals	Beds
Number of public sector facilities (2009) and beds (2009)	221	8	45	14	0	2	0	5		2 271
Number of private sector facilities and beds (2008)									5	393

Annual indicators for district: Cacadu – DC10

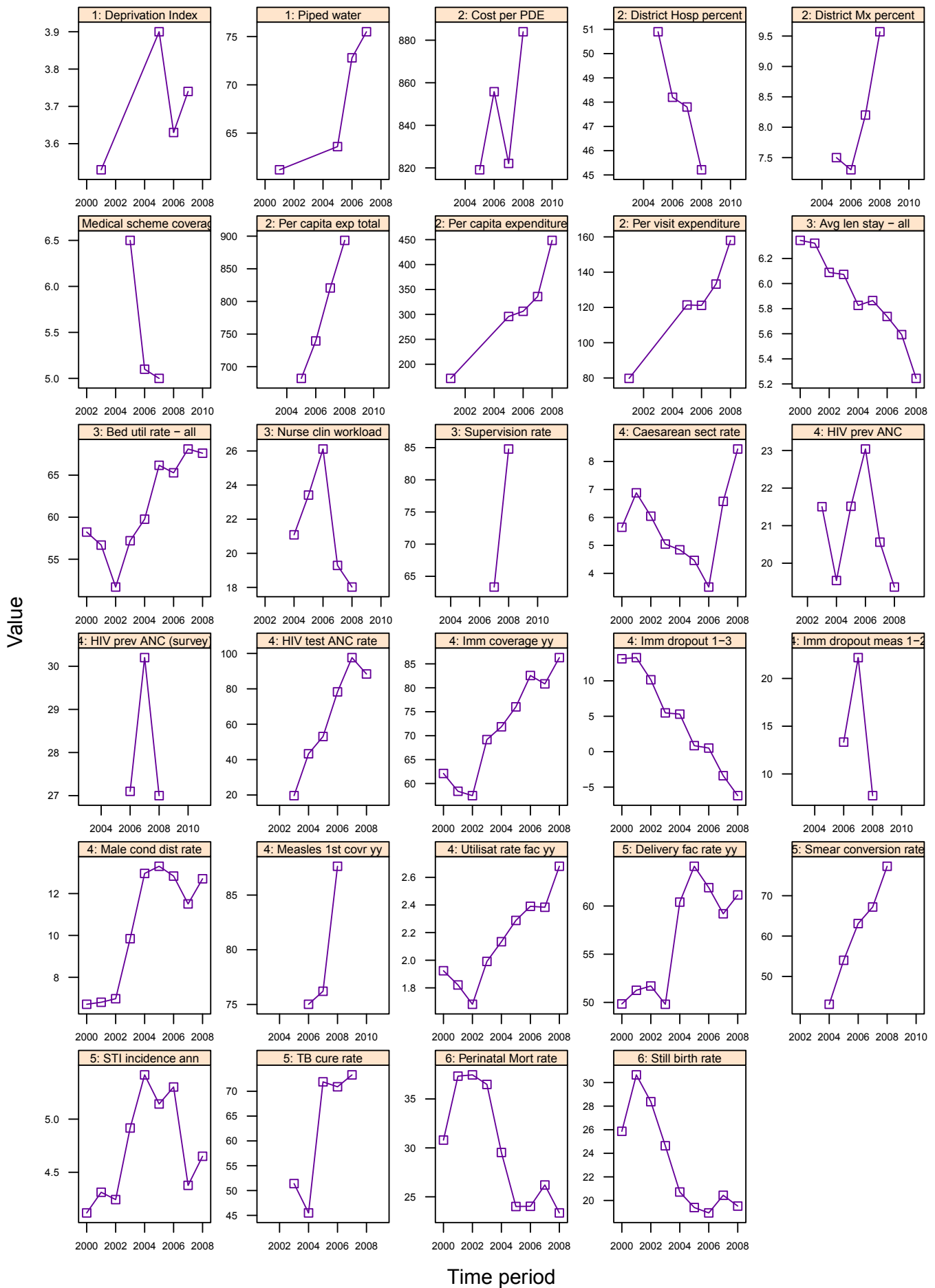


Annual indicators for Cacadu District Municipality

DC10	Cacadu District Municipality	Year								District Rank (1=best)	National value
		2001/02	2002/03	2003/04	2004/05	2005/06	2006/07	2007/08	2008/09		
Demographic and socio-economic	Population total					407 424	409 338	413 772	416 745		48 272 353
	Population Density					-	-	-	7		40
	Medical aid coverage (%)					11.7	14.0	14.0	-	23	14.3
	Access to piped water (%) - (2005-06 GHS, 2007 Comm. Survey)					88.7	87.7	95.6	-	19	88.7
	Deprivation index - (high value = most deprived)	2.51	-	-	-	2.19	2.09	1.76	-	15	-
	Socio-economic quintile - (1=poor, 5=best)	-	-	-	-	4	4	4	-	-	-
Input	Total PHC expenditure per capita - (real 2008/09 prices)	-	-	-	-	748	833	997	1 076	8	794
	Non-hospital PHC expenditure per capita - (real 2008/09 prices)	109	-	-	-	244	268	375	467	2	367
	% District health services expenditure on District Management	-	-	-	-	6.1	7.8	16.7	16.5		5.6
	% District health services expenditure on District Hospitals	-	-	-	-	63.4	58.2	53.3	54.4		41.8
	PHC (Non-Hospital) Expenditure per Patient Visit - (real 2008/09 prices)	33	-	-	-	65	69	95	107	39	128
	Cost per PDE - (real 2008/09 prices)	-	-	-	-	854	947	960	1 155		1096
Process	Nurse clinical workload	-	-	-	46.3	45.6	44.9	41.9	41.8	1	23.3
	Average length of stay (ALOS)	-	-	4.1	4.1	4.3	4.1	3.9	3.6	21	4.3
	Bed utilisation rate (BUR)	-	-	65.7	64.4	70.8	69.6	63.7	60.1	41	66.9
	Clinic supervision rate	-	-	-	-	-	-	51.3	62.2	27	61.4
Output	Male condom distribution rate	-	-	8.7	11.3	11.3	13.7	12.2	12.9	13	12.3
	Immunisation coverage < 1 year	-	-	71.2	67.6	69.1	71.9	75.9	84.5	34	89.5
	Immunisation drop-out rate (DTP1-3)	-	-	8.2	9.3	6.2	2.9	3.1	0.9	17	2.7
	Measles Coverage						81.8	76.9	87.4	19	91.8
	Measles drop-out rate						18.4	12.7	10.0	12	16.3
	Caesarean section rate	-	-	11.7	12.7	16.5	16.8	17.4	14.8		16.1
	Proportion ANC clients tested for HIV	-	-	6.6	15.4	36.8	61.8	85.6	96.5	19	86.7
	HIV prevalence among ANC clients tested (DHIS)	-	-	29.2	23.9	22.2	19.2	15.2	16.4	12	24.3
	HIV prevalence among ANC clients tested (survey)	-	-	-	-	-	22.8 (17.7-28)	20 (15.2-26)	23.8 (17.7-31.2)	17	29.3
	Baby PCR test around 6 weeks uptake								105.4		
	Antenatal client CD4 1st test rate								0.0		
	Utilisation rate	-	-	2.8	3.1	3.2	3.4	3.4	3.8	5	2.4
Outcome	Incidence of STI treated - new	-	-	3.9	3.7	3.4	3.4	3.4	3.5	18	4.6
	TB cure rate (2003 - 2007)	-	-	39.1	54.8	59.7	73.7	73.6		12	64.0
	TB smear conversion rate (2004 - 2008)	-	-		45.9	42.2	51.9	57.3	60.9	27	62.5
	TB case load (new Sm+)	-	-	-	-	-	-	2 786	2 369		138 803
	Delivery rate in facility	-	-	68.3	68.7	72.1	74.7	72.6	66.1	44	86.6
Impact	Stillbirth rate	-	-	28.3	27.8	28.3	26.3	26.0	17.8	10	22.3
	Perinatal mortality rate in facility	-	-	42.9	41.5	36.1	35.4	30.2	26.7	13	31.4

Number of health facilities and beds	Clinic	CHCs	Mobile Service	District Hospital	Regional Hospital	Provincial Tertiary Hospital	Central Hospital	Specialised Hospital	Private hospitals	Beds
Number of public sector facilities (2009) and beds (2009)	59	1	27	10	0	0	0	5		1 236
Number of private sector facilities and beds (2008)									0	0

Annual indicators for district: Chris Hani – DC13

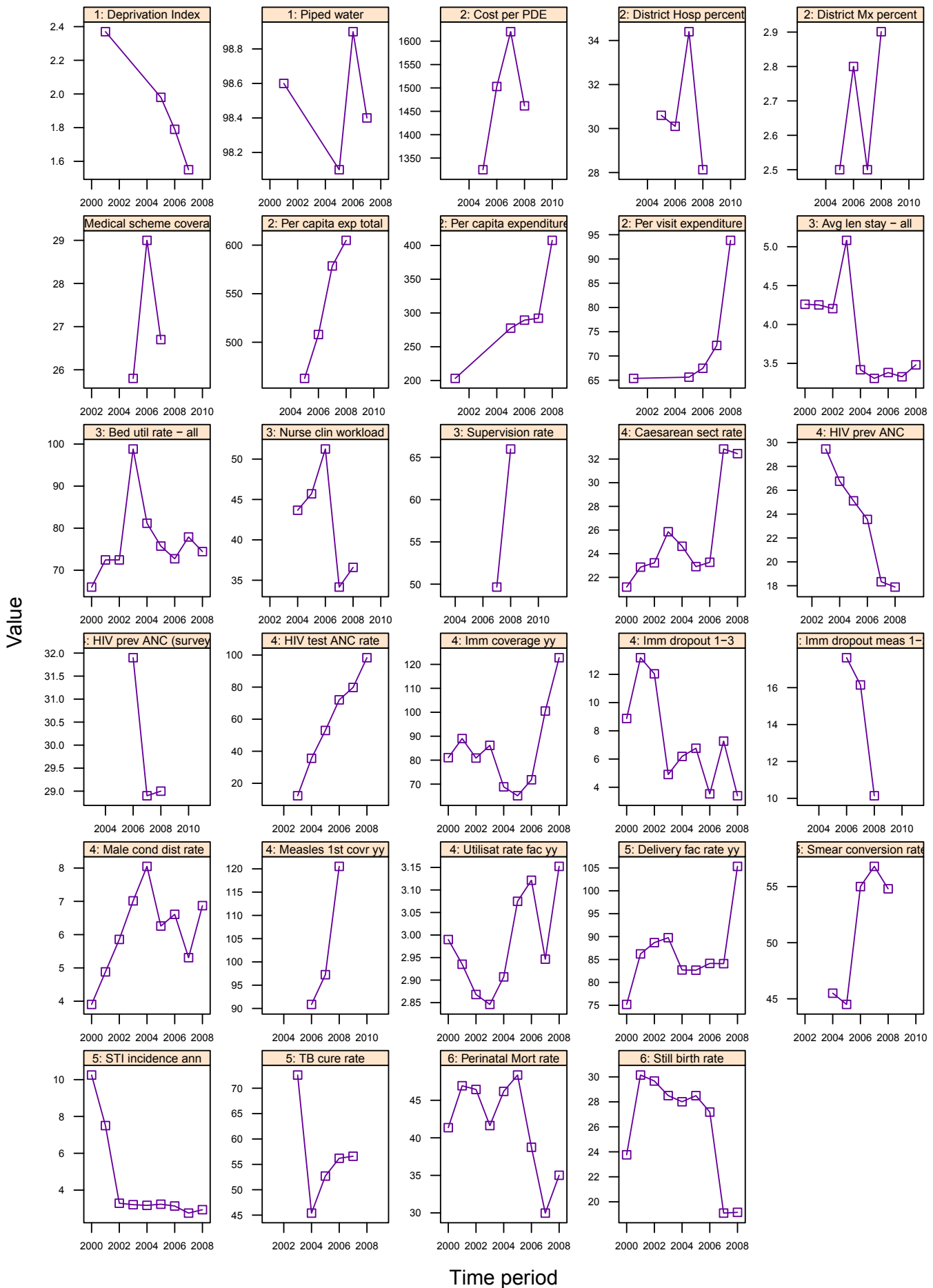


Annual indicators for Chris Hani District Municipality

DC13	Chris Hani District Municipality	Year								District Rank (1=best)	National value
		2001/02	2002/03	2003/04	2004/05	2005/06	2006/07	2007/08	2008/09		
Demographic and socio-economic	Population total					883 735	879 811	875 429	871 116		48 272 353
	Population Density					-	-	-	24		40
	Medical aid coverage (%)					6.5	5.1	5.0	-	48	14.3
	Access to piped water (%) - (2005-06 GHS, 2007 Comm. Survey)					63.6	72.8	75.5	-	40	88.7
	Deprivation index - (high value = most deprived)	3.53	-	-	-	3.90	3.63	3.74	-	44	-
	Socio-economic quintile - (1=poor, 5=best)	-	-	-	-	1	2	1	-	-	-
Input	Total PHC expenditure per capita - (real 2008/09 prices)	-	-	-	-	682	739	821	894	21	794
	Non-hospital PHC expenditure per capita - (real 2008/09 prices)	172	-	-	-	296	306	336	448	12	367
	% District health services expenditure on District Management	-	-	-	-	7.5	7.3	8.2	9.6		5.6
	% District health services expenditure on District Hospitals	-	-	-	-	50.9	48.2	47.8	45.2		41.8
	PHC (Non-Hospital) Expenditure per Patient Visit - (real 2008/09 prices)	80	-	-	-	121	121	133	158	8	128
	Cost per PDE - (real 2008/09 prices)	-	-	-	-	819	856	822	884		1096
Process	Nurse clinical workload	-	-	-	21.1	23.4	26.1	19.3	18.0	45	23.3
	Average length of stay (ALOS)	-	-	6.1	5.8	5.9	5.7	5.6	5.2	43	4.3
	Bed utilisation rate (BUR)	-	-	57.2	59.8	66.2	65.3	68.1	67.6	29	66.9
	Clinic supervision rate	-	-	-	-	-	-	63.3	84.8	5	61.4
Output	Male condom distribution rate	-	-	9.8	13.0	13.3	12.8	11.5	12.7	14	12.3
	Immunisation coverage < 1 year	-	-	69.2	71.9	76.0	82.6	80.8	86.3	31	89.5
	Immunisation drop-out rate (DTP1-3)	-	-	5.5	5.3	0.9	0.5	-3.4	-6.2	3	2.7
	Measles Coverage						75.0	76.2	87.6	21	91.8
	Measles drop-out rate						13.3	22.2	7.7	6	16.3
	Caesarean section rate	-	-	5.0	4.8	4.5	3.5	6.6	8.4		16.1
	Proportion ANC clients tested for HIV	-	-	19.6	43.3	53.1	78.3	97.6	88.4	33	86.7
	HIV prevalence among ANC clients tested (DHIS)	-	-	21.5	19.5	21.5	23.0	20.6	19.4	19	24.3
	HIV prevalence among ANC clients tested (survey)	-	-	-	-	-	27.1 (23-31.2)	30.2 (26.2-34.5)	27 (22.9-31.5)	23	29.3
	Baby PCR test around 6 weeks uptake								94.8		
	Antenatal client CD4 1st test rate								5.1		
Outcome	Utilisation rate	-	-	2.0	2.1	2.3	2.4	2.4	2.7	22	2.4
	Incidence of STI treated - new	-	-	4.9	5.4	5.1	5.3	4.4	4.7	31	4.6
	TB cure rate (2003 - 2007)	-	-	51.4	45.5	71.9	70.9	73.3		13	64.0
	TB smear conversion rate (2004 - 2008)	-	-		43.1	54.0	63.1	67.2	77.3	8	62.5
	TB case load (new Sm+)	-	-	-	-	-	-	2 164	2 861		138 803
Impact	Delivery rate in facility	-	-	49.8	60.4	64.1	61.9	59.2	61.1	49	86.6
	Stillbirth rate	-	-	24.6	20.7	19.4	18.9	20.4	19.5	17	22.3
	Perinatal mortality rate in facility	-	-	36.5	29.5	24.0	24.0	26.2	23.4	6	31.4

Number of health facilities and beds	Clinic	CHCs	Mobile Service	District Hospital	Regional Hospital	Provincial Tertiary Hospital	Central Hospital	Specialised Hospital	Private hospitals	Beds
Number of public sector facilities (2009) and beds (2009)	142	3	30	14	1	0	0	1		1 606
Number of private sector facilities and beds (2008)									1	30

Annual indicators for district: Nelson Mandela Bay Metro – NMA

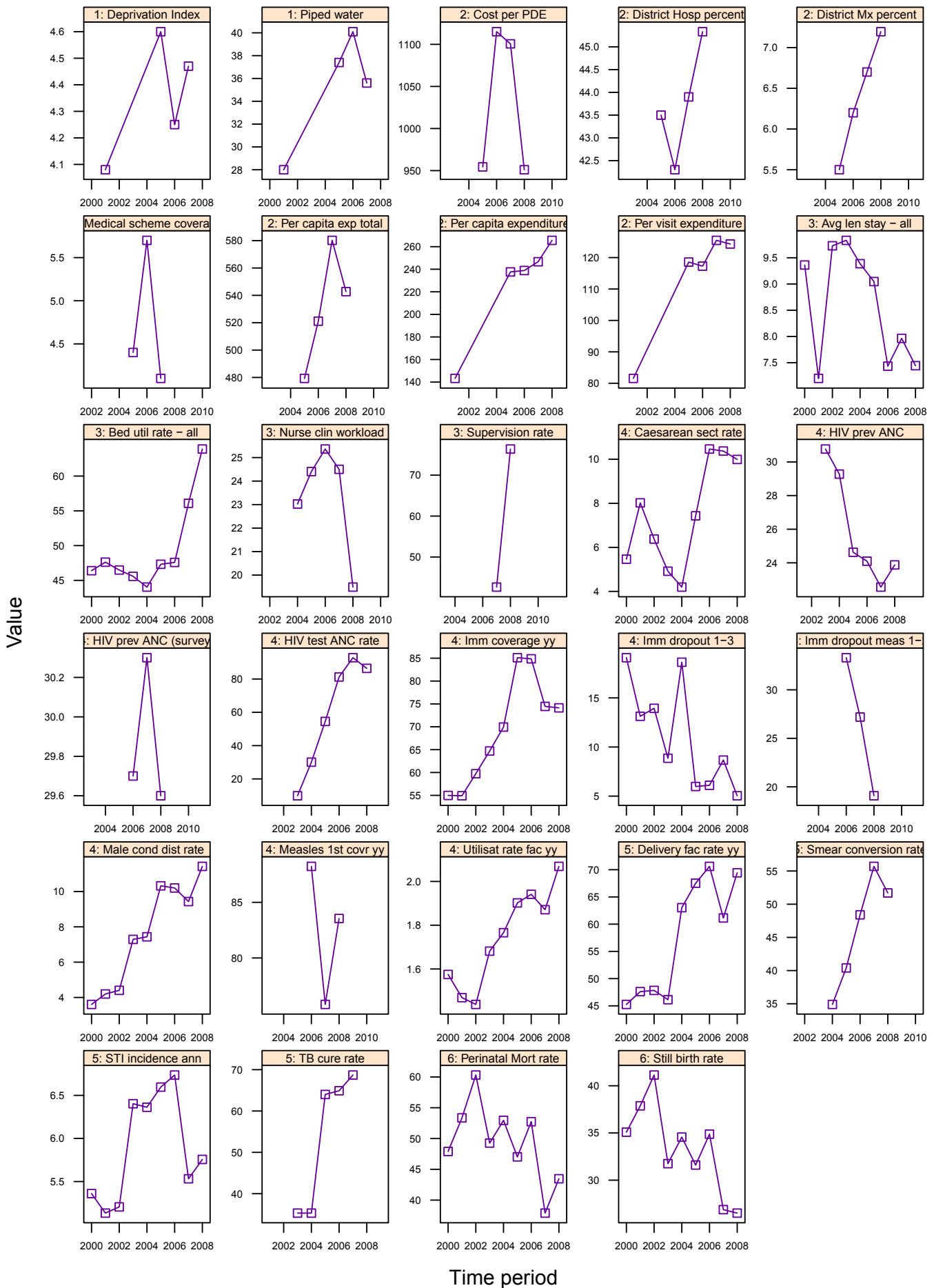


Annual indicators for Nelson Mandela Bay Metropolitan Municipality

NMA	Nelson Mandela Bay Metropolitan Municipality	Year								District Rank (1=best)	National value
		2001/02	2002/03	2003/04	2004/05	2005/06	2006/07	2007/08	2008/09		
Demographic and socio-economic	Population total					1 116 378	1 121 373	1 131 016	1 136 222		48 272 353
	Population Density					-	-	-	580		40
	Medical aid coverage (%)					25.8	29.0	26.7	-	1	14.3
	Access to piped water (%) - (2005-06 GHS, 2007 Comm. Survey)					98.1	98.9	98.4	-	6	88.7
	Deprivation index - (high value = most deprived)	2.37	-	-	-	1.98	1.79	1.55	-	8	-
	Socio-economic quintile - (1=poor, 5=best)	-	-	-	-	4	4	5	-	-	-
Input	Total PHC expenditure per capita - (real 2008/09 prices)	-	-	-	-	463	508	579	605	44	794
	Non-hospital PHC expenditure per capita - (real 2008/09 prices)	203	-	-	-	278	289	292	408	14	367
	% District health services expenditure on District Management	-	-	-	-	2.5	2.8	2.5	2.9		5.6
	% District health services expenditure on District Hospitals	-	-	-	-	30.6	30.1	34.4	28.1		41.8
	PHC (Non-Hospital) Expenditure per Patient Visit - (real 2008/09 prices)	65	-	-	-	66	67	72	94	48	128
	Cost per PDE - (real 2008/09 prices)	-	-	-	-	1 325	1 503	1 620	1 462		1096
Process	Nurse clinical workload	-	-	-	43.7	45.7	51.2	34.2	36.6	2	23.3
	Average length of stay (ALOS)	-	-	5.1	3.4	3.3	3.4	3.3	3.5	19	4.3
	Bed utilisation rate (BUR)	-	-	98.8	81.2	75.7	72.7	77.9	74.4	13	66.9
	Clinic supervision rate	-	-	-	-	-	-	49.7	66.0	24	61.4
Output	Male condom distribution rate	-	-	7.0	8.1	6.3	6.6	5.3	6.9	39	12.3
	Immunisation coverage < 1 year	-	-	86.2	68.9	65.1	71.8	100.5	122.8	4	89.5
	Immunisation drop-out rate (DTP1-3)	-	-	4.9	6.2	6.8	3.5	7.3	3.4	30	2.7
	Measles Coverage						90.9	97.2	120.5	49	91.8
	Measles drop-out rate						17.6	16.1	10.1	13	16.3
	Caesarean section rate	-	-	25.9	24.6	22.9	23.3	32.8	32.5		16.1
	Proportion ANC clients tested for HIV	-	-	12.2	35.6	53.0	72.0	79.8	98.3	16	86.7
	HIV prevalence among ANC clients tested (DHIS)	-	-	29.5	26.8	25.1	23.6	18.3	17.9	15	24.3
	HIV prevalence among ANC clients tested (survey)	-	-	-	-	-	31.9 (28.6-35.3)	28.9 (22.8-35.9)	29 (23.4-35.4)	27	29.3
	Baby PCR test around 6 weeks uptake								71.1		
	Antenatal client CD4 1st test rate								53.8		
	Utilisation rate	-	-	2.8	2.9	3.1	3.1	2.9	3.2	10	2.4
Outcome	Incidence of STI treated - new	-	-	3.2	3.2	3.2	3.1	2.8	2.9	12	4.6
	TB cure rate (2003 - 2007)	-	-	72.6	45.4	52.7	56.2	56.6		38	64.0
	TB smear conversion rate (2004 - 2008)	-	-	-	45.5	44.5	55.0	56.8	54.8	36	62.5
	TB case load (new Sm+)	-	-	-	-	-	-	5 385	5 260		138 803
	Delivery rate in facility	-	-	89.8	82.7	82.7	84.1	84.1	105.3	2	86.6
Impact	Stillbirth rate	-	-	28.5	28.0	28.5	27.2	19.1	19.2	14	22.3
	Perinatal mortality rate in facility	-	-	41.6	46.2	48.4	38.7	30.0	35.0	38	31.4

Number of health facilities and beds	Clinic	CHCs	Mobile Service	District Hospital	Regional Hospital	Provincial Tertiary Hospital	Central Hospital	Specialised Hospital	Private hospitals	Beds
Number of public sector facilities (2009) and beds (2009)	43	8	11	1	0	3	0	4		1 584
Number of private sector facilities and beds (2008)									7	955

Annual indicators for district: O.R.Tambo – DC15

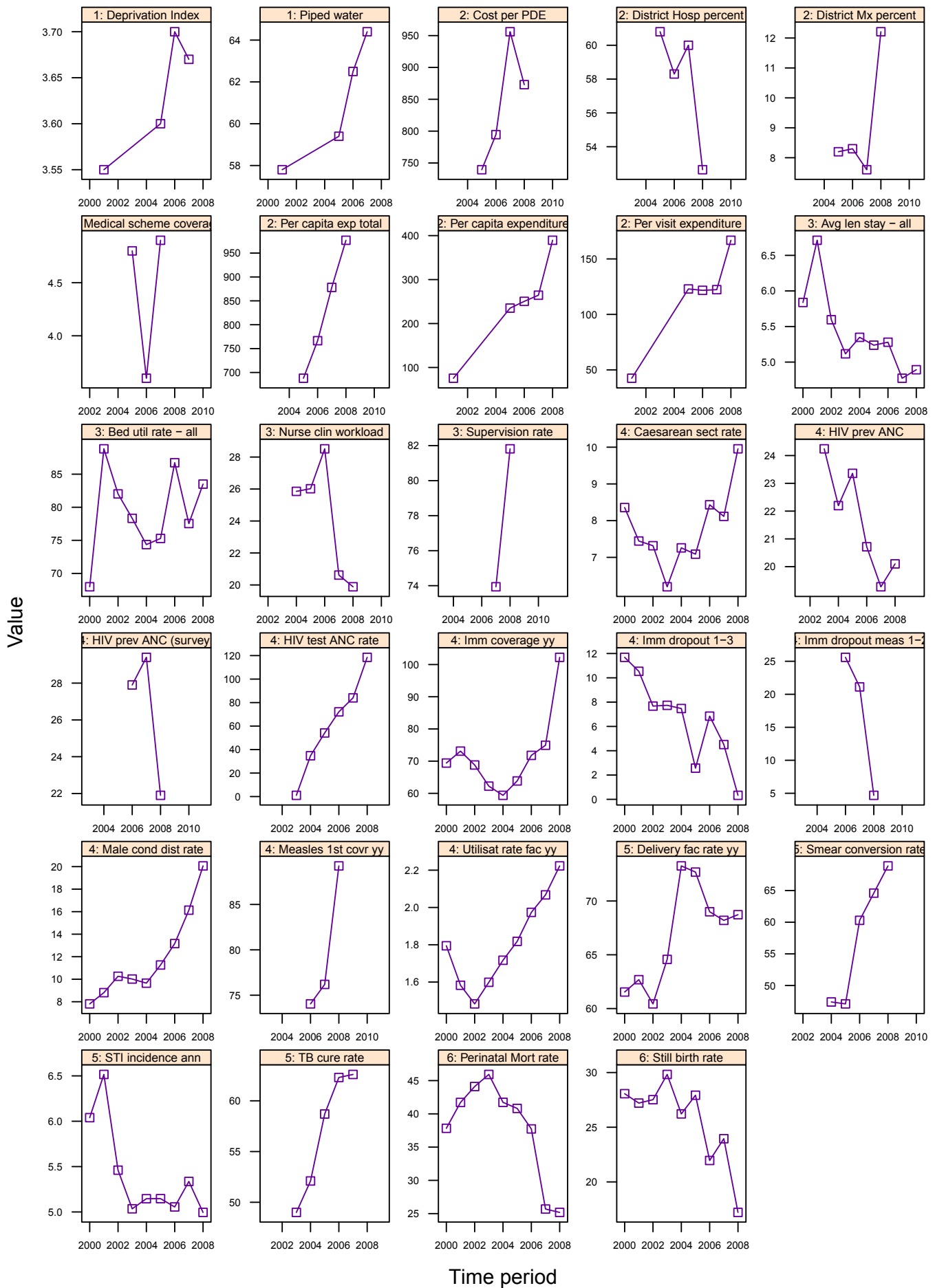


Annual indicators for O.R. Tambo District Municipality

DC15	O.R. Tambo District Municipality	Year								District Rank (1=best)	National value
		2001/02	2002/03	2003/04	2004/05	2005/06	2006/07	2007/08	2008/09		
Demographic and socio-economic	Population total					1 804 907	1 816 537	1 822 740	1 828 557		48 272 353
	Population Density					-	-	-	115		40
	Medical aid coverage (%)					4.4	5.7	4.1	-	51	14.3
	Access to piped water (%) - (2005-06 GHS, 2007 Comm. Survey)					37.4	40.1	35.6	-	52	88.7
	Deprivation index - (high value = most deprived)	4.08	-	-	-	4.60	4.25	4.47	-	50	-
	Socio-economic quintile - (1=poor, 5=best)	-	-	-	-	1	1	1	-	-	-
Input	Total PHC expenditure per capita - (real 2008/09 prices)	-	-	-	-	479	521	580	543	48	794
	Non-hospital PHC expenditure per capita - (real 2008/09 prices)	143	-	-	-	238	239	247	266	42	367
	% District health services expenditure on District Management	-	-	-	-	5.5	6.2	6.7	7.2		5.6
	% District health services expenditure on District Hospitals	-	-	-	-	43.5	42.3	43.9	45.3		41.8
	PHC (Non-Hospital) Expenditure per Patient Visit - (real 2008/09 prices)	82	-	-	-	119	117	125	124	27	128
	Cost per PDE - (real 2008/09 prices)	-	-	-	-	954	1 115	1 101	951		1096
Process	Nurse clinical workload	-	-	-	23.0	24.4	25.4	24.5	19.5	36	23.3
	Average length of stay (ALOS)	-	-	9.8	9.4	9.0	7.4	8.0	7.4	51	4.3
	Bed utilisation rate (BUR)	-	-	45.6	44.0	47.3	47.6	56.1	63.9	34	66.9
	Clinic supervision rate	-	-	-	-	-	-	42.7	76.4	10	61.4
Output	Male condom distribution rate	-	-	7.3	7.4	10.3	10.2	9.4	11.4	19	12.3
	Immunisation coverage < 1 year	-	-	64.7	69.9	85.1	84.9	74.5	74.1	46	89.5
	Immunisation drop-out rate (DTP1-3)	-	-	8.9	18.6	6.0	6.1	8.7	5.0	41	2.7
	Measles Coverage						88.2	75.8	83.5	16	91.8
	Measles drop-out rate						33.3	27.2	19.1	42	16.3
	Caesarean section rate	-	-	4.9	4.2	7.4	10.5	10.4	10.0		16.1
	Proportion ANC clients tested for HIV	-	-	9.9	30.1	54.5	81.2	92.8	86.4	36	86.7
	HIV prevalence among ANC clients tested (DHIS)	-	-	30.8	29.3	24.6	24.1	22.6	23.9	27	24.3
	HIV prevalence among ANC clients tested (survey)	-	-	-	-	-	29.7 (26.8-32.6)	30.3 (26.6-34.2)	29.6 (26.2-33.2)	29	29.3
	Baby PCR test around 6 weeks uptake								93.7		
	Antenatal client CD4 1st test rate								1.1		
	Utilisation rate	-	-	1.7	1.8	1.9	1.9	1.9	2.1	42	2.4
Outcome	Incidence of STI treated - new	-	-	6.4	6.4	6.6	6.7	5.5	5.8	39	4.6
	TB cure rate (2003 - 2007)	-	-	35.3	35.3	64.0	64.9	68.7		23	64.0
	TB smear conversion rate (2004 - 2008)	-	-	-	34.9	40.4	48.4	55.7	51.7	40	62.5
	TB case load (new Sm+)	-	-	-	-	-	-	5 152	4 948		138 803
	Delivery rate in facility	-	-	46.1	63.0	67.5	70.6	61.1	69.4	41	86.6
Impact	Stillbirth rate	-	-	31.7	34.6	31.6	34.9	26.9	26.5	43	22.3
	Perinatal mortality rate in facility	-	-	49.3	53.0	47.0	52.7	37.9	43.5	51	31.4

Number of health facilities and beds	Clinic	CHCs	Mobile Service	District Hospital	Regional Hospital	Provincial Tertiary Hospital	Central Hospital	Specialised Hospital	Private hospitals	Beds
Number of public sector facilities (2009) and beds (2009)	153	10	14	10	1	2	0	2		1 363
Number of private sector facilities and beds (2008)									1	110

Annual indicators for district: Ukhahlamba – DC14



Annual indicators for Ukhahlamba District Municipality

DC14	Ukhahlamba District Municipality	Year								District Rank (1=best)	National value
		2001/02	2002/03	2003/04	2004/05	2005/06	2006/07	2007/08	2008/09		
Demographic and socio-economic	Population total					340 451	339 377	338 948	338 198		48 272 353
	Population Density					-	-	-	13		40
	Medical aid coverage (%)					4.8	3.6	4.9	-	49	14.3
	Access to piped water (%) - (2005-06 GHS, 2007 Comm. Survey)					59.4	62.5	64.4	-	46	88.7
	Deprivation index - (high value = most deprived)	3.55	-	-	-	3.60	3.70	3.67	-	42	-
	Socio-economic quintile - (1=poor, 5=best)	-	-	-	-	2	1	2	-	-	-
Input	Total PHC expenditure per capita - (real 2008/09 prices)	-	-	-	-	688	767	878	977	15	794
	Non-hospital PHC expenditure per capita - (real 2008/09 prices)	76	-	-	-	235	250	264	389	7	367
	% District health services expenditure on District Management	-	-	-	-	8.2	8.3	7.6	12.2		5.6
	% District health services expenditure on District Hospitals	-	-	-	-	60.8	58.3	60.0	52.6		41.8
	PHC (Non-Hospital) Expenditure per Patient Visit - (real 2008/09 prices)	42	-	-	-	123	122	122	167	5	128
	Cost per PDE - (real 2008/09 prices)	-	-	-	-	739	795	956	873		1096
Process	Nurse clinical workload	-	-	-	25.9	26.0	28.5	20.6	19.9	34	23.3
	Average length of stay (ALOS)	-	-	5.1	5.3	5.2	5.3	4.8	4.9	40	4.3
	Bed utilisation rate (BUR)	-	-	78.3	74.4	75.3	86.7	77.5	83.5	2	66.9
	Clinic supervision rate	-	-	-	-	-	-	73.9	81.8	6	61.4
Output	Male condom distribution rate	-	-	10.0	9.7	11.3	13.2	16.1	20.1	4	12.3
	Immunisation coverage < 1 year	-	-	62.2	59.4	63.9	71.8	74.9	102.2	9	89.5
	Immunisation drop-out rate (DTP1-3)	-	-	7.7	7.5	2.6	6.8	4.5	0.3	14	2.7
	Measles Coverage						74.0	76.2	89.2	25	91.8
	Measles drop-out rate						25.6	21.1	4.7	3	16.3
	Caesarean section rate	-	-	6.2	7.3	7.1	8.4	8.1	10.0		16.1
	Proportion ANC clients tested for HIV	-	-	1.1	34.8	54.2	72.1	84.0	118.5	1	86.7
	HIV prevalence among ANC clients tested (DHIS)	-	-	24.2	22.2	23.4	20.7	19.3	20.1	21	24.3
	HIV prevalence among ANC clients tested (survey)	-	-	-	-	-	27.9 (21.8-34.1)	29.4 (24.3-35.1)	21.9 (15.2-30.5)	15	29.3
	Baby PCR test around 6 weeks uptake								104.9		
Antenatal client CD4 1st test rate								0.0			
Utilisation rate	-	-	1.6	1.7	1.8	2.0	2.1	2.2	33	2.4	
Outcome	Incidence of STI treated - new	-	-	5.0	5.1	5.1	5.1	5.3	5.0	33	4.6
	TB cure rate (2003 - 2007)	-	-	49	52.1	58.7	62.3	62.6		30	64.0
	TB smear conversion rate (2004 - 2008)	-	-	-	47.4	47.1	60.3	64.6	68.9	18	62.5
	TB case load (new Sm+)	-	-	-	-	-	-	730	875		138 803
	Delivery rate in facility	-	-	64.6	73.3	72.7	69.0	68.2	68.7	43	86.6
Impact	Stillbirth rate	-	-	29.8	26.2	27.9	22.0	24.0	17.2	9	22.3
	Perinatal mortality rate in facility	-	-	45.9	41.7	40.8	37.7	25.7	25.2	12	31.4

Number of health facilities and beds	Clinic	CHCs	Mobile Service	District Hospital	Regional Hospital	Provincial Tertiary Hospital	Central Hospital	Specialised Hospital	Private hospitals	Beds
Number of public sector facilities (2009) and beds (2009)	46	1	16	8	0	0	0	2		519
Number of private sector facilities and beds (2008)									0	0