

Free State Province

The Free State, with a population of almost three million people, has the second lowest population density in the country after the Northern Cape. The five districts in the Free State have average to low deprivation indices, with Fezile Dabi falling into the highest socio-economic quintile. Almost all households (97.3%) had access to piped water in 2007.

In 2008/09, the province had the second lowest total PHC expenditure per capita (R659)⁶⁵ and the second lowest non-hospital per capita expenditure (PCE) on PHC in the country at R291 per person. Free State had the lowest average annual growth rate in both total PCE and non-hospital PCE between 2005/06 and 2008/09 in the country. There were wide inter-district variations in the non-hospital PCE with a 2.2 fold difference between the highest (Xhariep at R487) and Lejweleputswa, the lowest, at R220. Lejweleputswa district had the lowest non-hospital PCE on PHC in the country, with a negative average annual growth rate in expenditure of -2.3% in real terms between 2005/06 and 2008/09. The average non-hospital cost per patient visit to a primary health care facility in the Free State was R114, the second lowest in the country, and varied from a high of R150 in Xhariep to a low of R94 in Thabo Mofutsanyane. This indicator has also shown a negative average annual growth rate for the province in real terms between 2005/06 and 2008/09.

The DHIS data reflects that the province has 25 district hospitals with some 1516 usable beds. The percentage of district health services expenditure on these hospitals has decreased slightly from 42.2% in 2005/06 to 40.2% in 2008/09 although there remain large inter-district variations. The cost per patient day equivalent in the district hospitals was R1214 in 2008/09 - higher than the national average R1096. The bed utilisation rate remained unchanged since 2007/08, with wide variation between the highest (Thabo Mofutsanyane at 56.6%) and lowest (Fezile Dabi at 80.2%) values. The average length of stay in a district hospital was 3.1 days in 2008/09, well below the national average of 4.3 days, although Motheo has a much higher ALOS of 4.4 than other districts, due mainly to the very high length of stay for Dr JS Moroka Hospital.

The PHC facility utilisation rate in the Free State was 2.2 visits per person per year in 2008/09, below the national average of 2.4 and the third lowest rate in the country, although there was a noticeable increase across most districts between 2007/08 and 2008/09. The clinic supervision rate improved markedly from 37.2% in 2006/07 to 62.5% in 2008/09. While four districts improved by between 13 and 19 percentage points since 2006/07, Motheo district showed an excellent 43.7 percentage point increase. Fezile Dabi had the lowest clinic supervision rate in the province in 2008/09 at 40.6%.

The province continued to perform well in the management of priority diseases when compared to the rest of the country. The TB cure rate at 71.3% in 2007 was the third best in South Africa and well above the national average of 64.0%. The smear conversion rate, the second best in the country, has improved from 58.5% in 2004 to 73.2% 2008. The incidence of TB in the Free State (313.8 new smear positive cases per 100 000 people), noticeably higher than the national average at 287.5 cases, is similar to the 2007 value of 314.2 cases.

In 2008 the Free State HIV prevalence rate was 32.9%, the third highest in the country, as measured by the 2008 National HIV and Syphilis Prevalence Survey. Xhariep district had the lowest HIV prevalence at 26.9%, up from 23.9% in 2007, while Fezile Dabi had the highest prevalence rate at 34.5% which was well above the national average of 29.3%. Available data for two of the new PMTCT/ART indicators, 'Baby PCR test around six weeks uptake' and 'Antenatal client CD4 1st test rate' is still incomplete as this is the first year of measurement in the DHIS, but data for the most recent months suggest that the province is making progress.

Although showing an increase over previous years, the Free State distributed among the lowest number of condoms (7.9) per male 15 years and older in 2008/09 in the country. Motheo district's distribution rate was the lowest in the country at 4.3 condoms per male per year, and has been consistently low for the past six years. Despite this, Free State's incidence of STIs at 3.3% is third lowest in the country with all five of its districts showing incidence rates below the national incidence of 4.6%.

Free State's Caesarean section rate at 12.1% is third lowest rate amongst the provinces. The low rate is contributed to by Xhariep district having a zero percent C-section rate which, on enquiry, was confirmed by the district and is due to there being insufficient medical officers on duty at any one time at any of the four district hospitals to conduct C-sections. Maternity cases requiring a C-section are transferred to Motheo district, which explains that district's relatively high rate of 19.0%, and the pattern over the past five to six years. The province's delivery rate in facility (all levels of facilities) of 84.2% shows a similar pattern to the

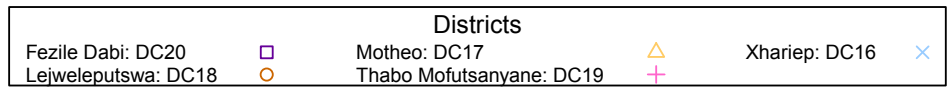
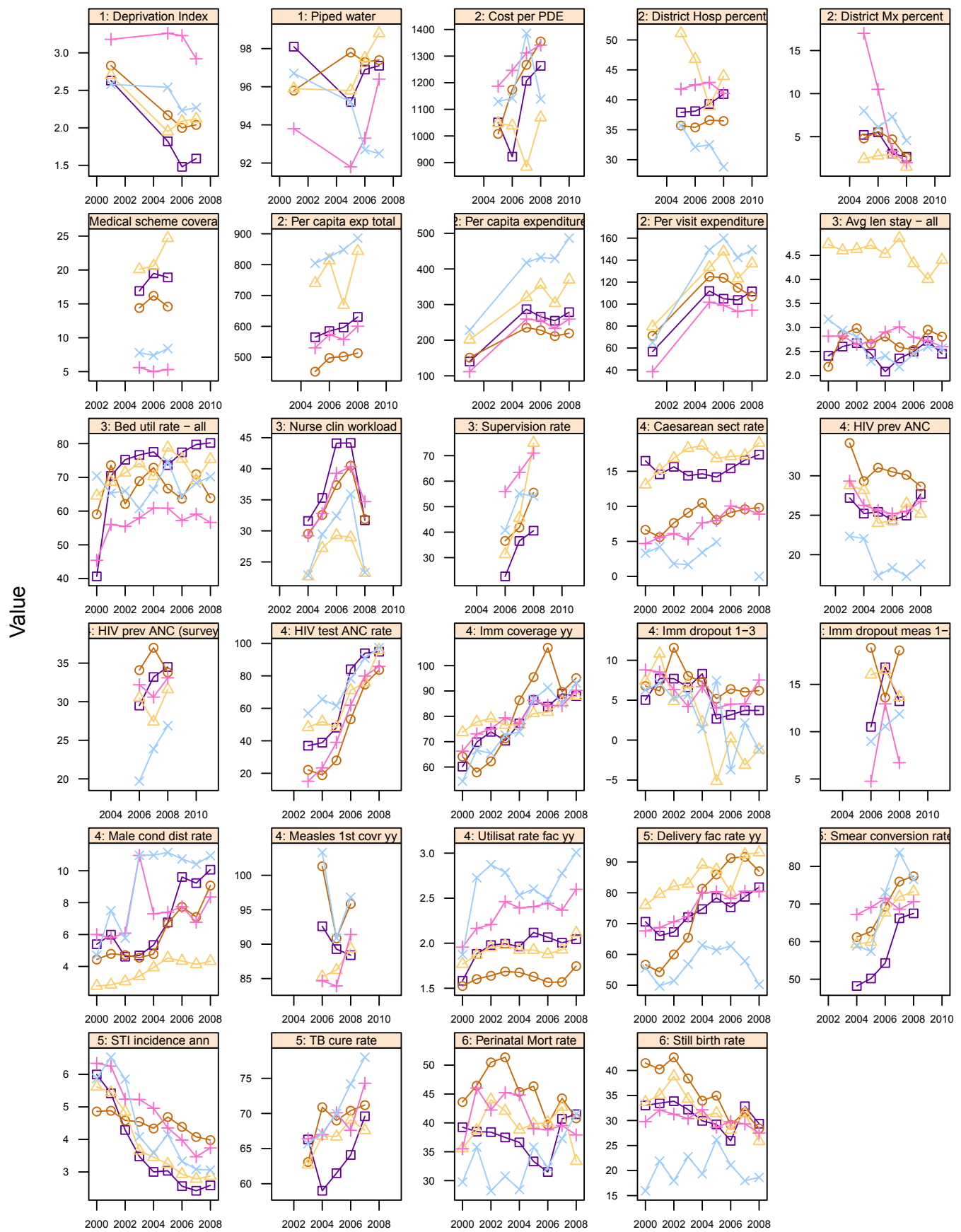
⁶⁵ Figures are in REAL prices that have been adjusted for the effects of inflation to 2008/09 prices.

C-section rate with Xhariep at 50.3% being the second lowest value in 2008/09 in the country and Motheo recording the highest delivery rate in facility in the province at 93.1%.

The data for 2008/09 show full immunisation coverage of 90.4%, slightly higher than the national average of 89.5%. There has been a steady, if somewhat erratic, increase since achieving 74.8% in 2003/04. The province's immunisation drop-out rate between DTP1 and DTP3 is third highest in the country at 4.1. The Measles 1st dose coverage reflects a sound provincial average of 91.5%, with the districts fairly closely grouped around the average. The Measles immunisation drop-out rate at 12.6% was second lowest in the country and well below the national average of 16.3%. District rates varied from 6.7% in Thabo Mofutsanyane to 18.6% in Lejweleputswa.

Free State province's stillbirth rate (27.3 per 1000 births) and the perinatal mortality rate (PNMR) (37.9 per 1000 births) were both the highest of all the provinces and well above the national average of 22.3 and 31.4 per 1000 births respectively. Both rates have dropped since 2007/08 by 3.4 and 3.8 percentage points respectively. At district level, Fazile Dabi's stillbirth rate of 29.4 per 1000 and the PNMR rates of 41.6 and 41.5 per 1000 in Xhariep and Fezile Dabi districts respectively, are all amongst the five highest in the country.

Annual indicators for districts in Free State (FS)

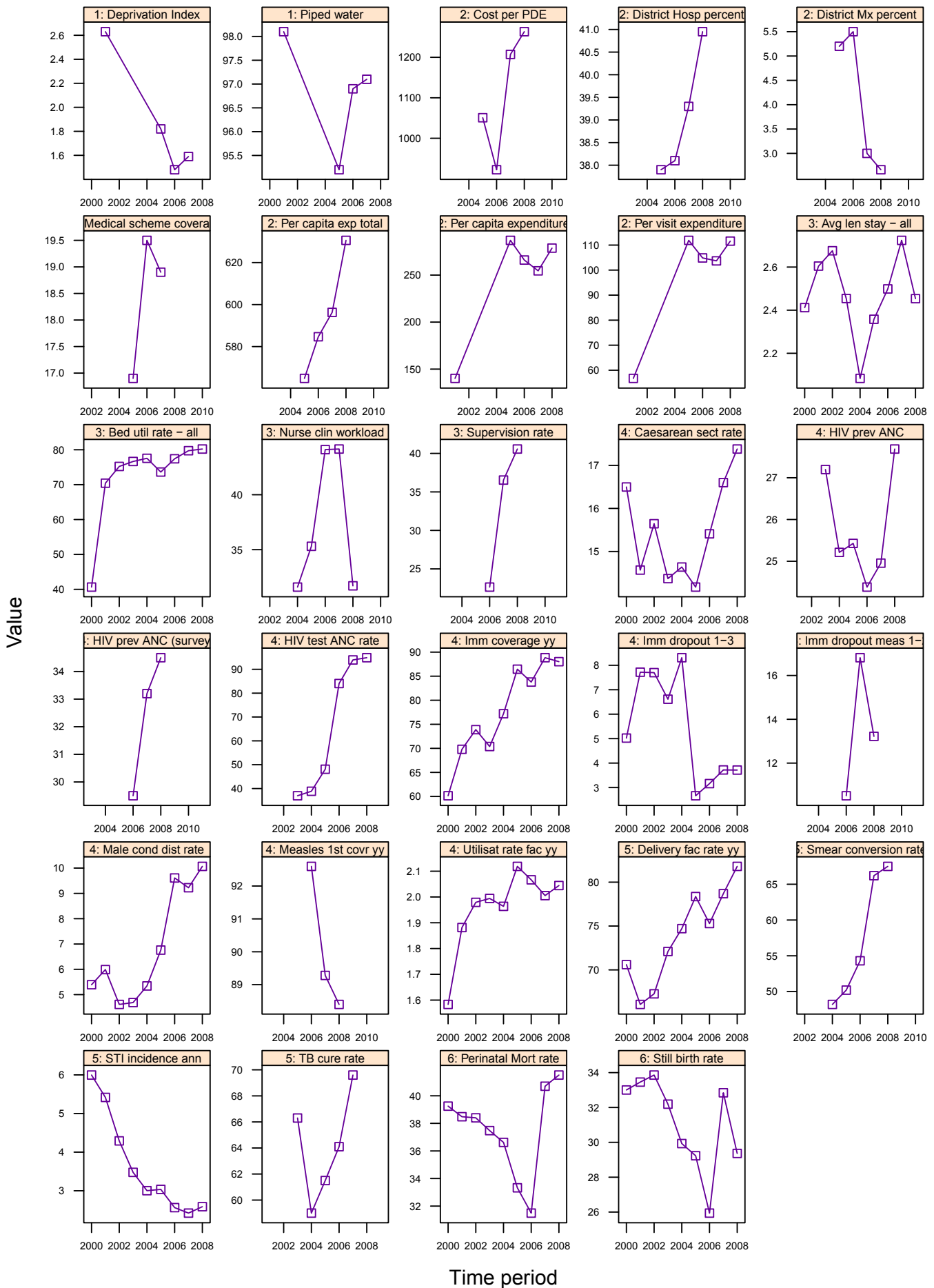


Annual indicators for Free State Province

FS	Free State	Year								District Rank (1=best)	National value
		2001/02	2002/03	2003/04	2004/05	2005/06	2006/07	2007/08	2008/09		
Demographic and socio-economic	Population total					2 952 841	2 958 715	2 968 604	2 972 983		48 272 353
	Population Density					-	-	-	23		40
	Medical aid coverage (%)					13.9	14.8	15.8	-	-	14.3
	Access to piped water (%) - (2005-06 GHS, 2007 Comm. Survey)					95.3	96.2	97.3	-	-	88.7
	Deprivation index - (high value = most deprived)	-	-	-	-	-	-	-	-	-	-
	Socio-economic quintile - (1=poor, 5=best)	-	-	-	-	-	-	-	-	-	-
Input	Total PHC expenditure per capita - (real 2008/09 prices)	-	-	-	-	582	628	593	659	-	794
	Non-hospital PHC expenditure per capita - (real 2008/09 prices)	156	-	-	-	281	284	259	291	-	367
	% District health services expenditure on District Management	-	-	-	-	7.6	6.1	3.7	2.2		5.6
	% District health services expenditure on District Hospitals	-	-	-	-	42.2	40.9	39.1	40.2		41.8
	PHC (Non-Hospital) Expenditure per Patient Visit - (real 2008/09 prices)	61	-	-	-	119	121	110	114	-	128
	Cost per PDE - (real 2008/09 prices)	-	-	-	-	1 080	1 096	1 138	1 214		1096
Process	Nurse clinical workload	-	-	-	27.2	31.4	36.1	36.9	29.1	-	23.3
	Average length of stay (ALOS)	-	-	3.1	3.0	3.2	3.1	3.1	3.1	-	4.3
	Bed utilisation rate (BUR)	-	-	67.8	68.7	70.1	67.3	67.7	67.8	-	66.9
	Clinic supervision rate	-	-	-	-	-	37.2	48.9	62.5	-	61.4
Output	Male condom distribution rate	-	-	6.1	5.6	6.5	7.3	6.7	7.9	-	12.3
	Immunisation coverage < 1 year	-	-	74.8	78.9	86.8	88.1	86.6	90.4	-	89.5
	Immunisation drop-out rate (DTP1-3)	-	-	6.4	5.6	1.9	3.2	2.6	4.1	-	2.7
	Measles Coverage						90.4	87.2	91.5	-	91.8
	Measles drop-out rate						12.2	14.7	12.6	-	16.3
	Caesarean section rate	-	-	10.1	11.4	10.7	11.6	11.8	12.1		16.1
	Proportion ANC clients tested for HIV	-	-	31.1	33.7	41.6	66.6	80.1	90.2	-	86.7
	HIV prevalence among ANC clients tested (DHIS)	-	-	28.9	26.9	25.4	25.4	26.3	26.5	-	24.3
	HIV prevalence among ANC clients tested (survey)	-	-	-	-	-	31.1 (29.2-33.1)	31.5 (29.1-34.1)	32.9 (30.5-35.3)	-	29.3
	Baby PCR test around 6 weeks uptake								29.0		
	Antenatal client CD4 1st test rate								89.4		
Outcome	Utilisation rate	-	-	2.1	2.0	2.0	2.0	2.0	2.2	-	2.4
	Incidence of STI treated - new	-	-	4.3	4.0	3.9	3.5	3.2	3.3	-	4.6
	TB cure rate (2003 - 2007)	-	-	64.8	67.2	67.5	69.1	71.3		-	64.0
	TB smear conversion rate (2004 - 2008)	-	-	-	58.5	61.1	67.2	73.3	73.2	-	62.5
	TB case load (new Sm+)	-	-	-	-	-	-	9 327	9 329		138 803
	Delivery rate in facility	-	-	72.6	81.1	82.4	80.1	84.8	84.2	-	86.6
Impact	Stillbirth rate	-	-	33.4	31.4	30.9	28.2	30.7	27.3	-	22.3
	Perinatal mortality rate in facility	-	-	43.9	41.3	39.8	38.0	41.7	37.9	-	31.4

Number of health facilities and beds	Clinic	CHCs	Mobile Service	District Hospital	Regional Hospital	Provincial Tertiary Hospital	Central Hospital	Specialised Hospital	Private hospitals	Beds
Number of public sector facilities (2009) and beds (2009)	236	13	99	25	5	0	1	3		4 868
Number of private sector facilities and beds (2008)									14	2 119

Annual indicators for district: Fezile Dabi – DC20

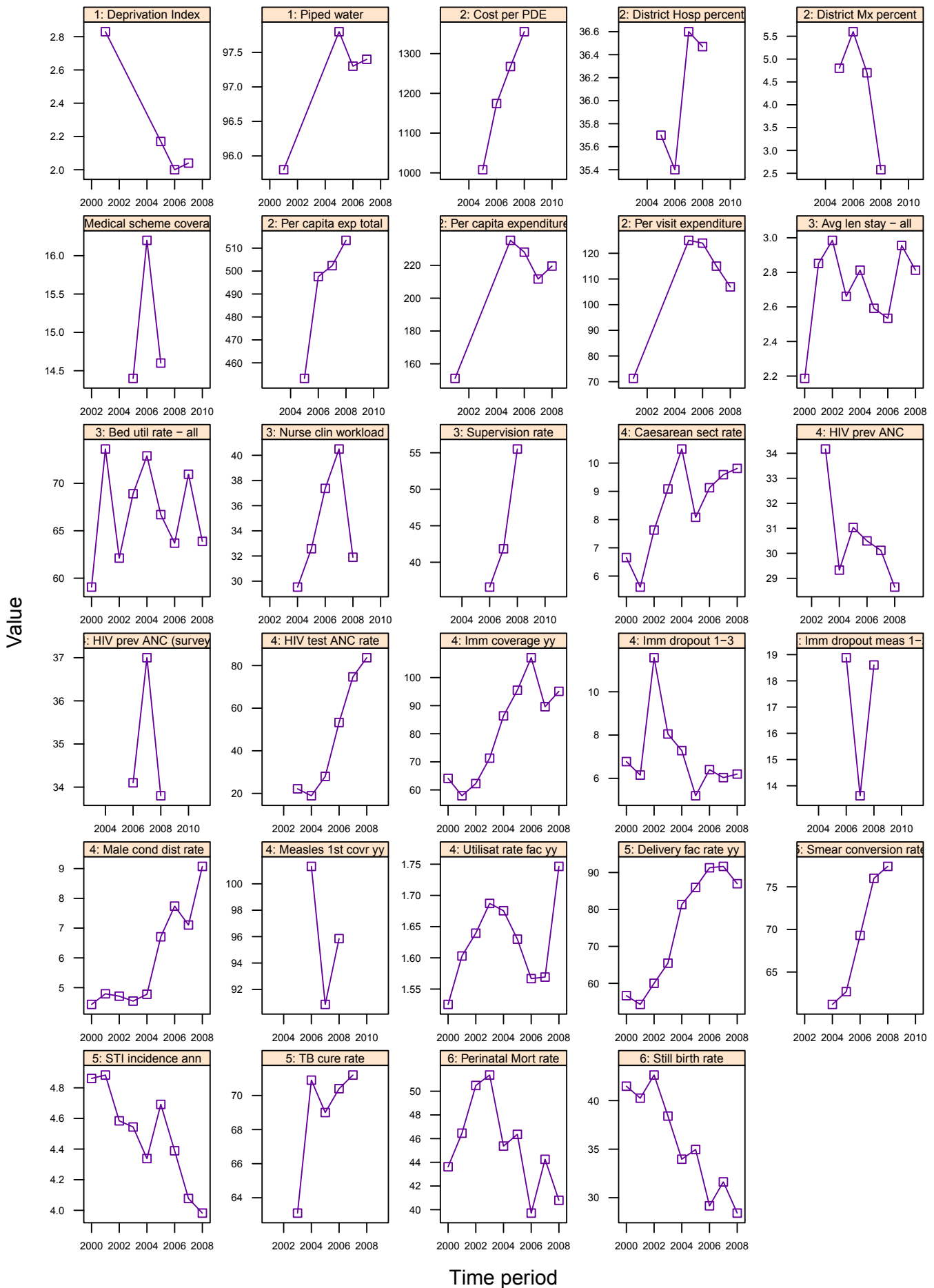


Annual indicators for Fezile Dabi District Municipality

DC20	Fezile Dabi District Municipality	Year								District Rank (1=best)	National value
		2001/02	2002/03	2003/04	2004/05	2005/06	2006/07	2007/08	2008/09		
Demographic and socio-economic	Population total					512 252	514 568	518 024	520 378		48 272 353
	Population Density					-	-	-	24		40
	Medical aid coverage (%)					16.9	19.5	18.9	-	9	14.3
	Access to piped water (%) - (2005-06 GHS, 2007 Comm. Survey)					95.2	96.9	97.1	-	15	88.7
	Deprivation index - (high value = most deprived)	2.63	-	-	-	1.82	1.48	1.59	-	10	-
	Socio-economic quintile - (1=poor, 5=best)	-	-	-	-	4	5	5	-	-	-
Input	Total PHC expenditure per capita - (real 2008/09 prices)	-	-	-	-	565	585	596	631	42	794
	Non-hospital PHC expenditure per capita - (real 2008/09 prices)	140	-	-	-	287	266	255	279	47	367
	% District health services expenditure on District Management	-	-	-	-	5.2	5.5	3.0	2.7		5.6
	% District health services expenditure on District Hospitals	-	-	-	-	37.9	38.1	39.3	41.0		41.8
	PHC (Non-Hospital) Expenditure per Patient Visit - (real 2008/09 prices)	57	-	-	-	112	105	104	112	37	128
	Cost per PDE - (real 2008/09 prices)	-	-	-	-	1 051	922	1 207	1 263		1096
Process	Nurse clinical workload	-	-	-	31.6	35.3	44.1	44.2	31.7	8	23.3
	Average length of stay (ALOS)	-	-	2.5	2.1	2.4	2.5	2.7	2.5	5	4.3
	Bed utilisation rate (BUR)	-	-	76.6	77.5	73.6	77.4	79.7	80.2	5	66.9
	Clinic supervision rate	-	-	-	-	-	22.6	36.5	40.6	45	61.4
Output	Male condom distribution rate	-	-	4.7	5.3	6.8	9.6	9.2	10.1	24	12.3
	Immunisation coverage < 1 year	-	-	70.4	77.2	86.5	83.8	88.8	88.0	27	89.5
	Immunisation drop-out rate (DTP1-3)	-	-	6.6	8.3	2.7	3.2	3.7	3.7	33	2.7
	Measles Coverage						92.6	89.3	88.4	23	91.8
	Measles drop-out rate						10.5	16.8	13.2	24	16.3
	Caesarean section rate	-	-	14.4	14.6	14.2	15.4	16.6	17.4		16.1
	Proportion ANC clients tested for HIV	-	-	37.0	38.9	48.1	84.0	93.9	94.9	24	86.7
	HIV prevalence among ANC clients tested (DHIS)	-	-	27.2	25.2	25.4	24.4	25.0	27.7	39	24.3
	HIV prevalence among ANC clients tested (survey)	-	-	-	-	-	29.5 (24.9-34.1)	33.2 (26.9-40.1)	34.5 (29.7-39.6)	39	29.3
	Baby PCR test around 6 weeks uptake								32.3		
	Antenatal client CD4 1st test rate								78.2		
	Utilisation rate	-	-	2.0	2.0	2.1	2.1	2.0	2.0	43	2.4
Outcome	Incidence of STI treated - new	-	-	3.5	3.0	3.0	2.6	2.4	2.6	8	4.6
	TB cure rate (2003 - 2007)	-	-	66.3	59	61.5	64.1	69.6		22	64.0
	TB smear conversion rate (2004 - 2008)	-	-	-	48.2	50.2	54.3	66.2	67.5	21	62.5
	TB case load (new Sm+)	-	-	-	-	-	-	1 523	1 503		138 803
	Delivery rate in facility	-	-	72.1	74.7	78.4	75.3	78.7	81.8	32	86.6
Impact	Stillbirth rate	-	-	32.2	29.9	29.2	25.9	32.8	29.4	50	22.3
	Perinatal mortality rate in facility	-	-	37.5	36.6	33.3	31.5	40.7	41.5	49	31.4

Number of health facilities and beds	Clinic	CHCs	Mobile Service	District Hospital	Regional Hospital	Provincial Tertiary Hospital	Central Hospital	Specialised Hospital	Private hospitals	Beds
Number of public sector facilities (2009) and beds (2009)	33	5	19	4	1	0	0	0		530
Number of private sector facilities and beds (2008)									2	72

Annual indicators for district: Lejweleputswa – DC18

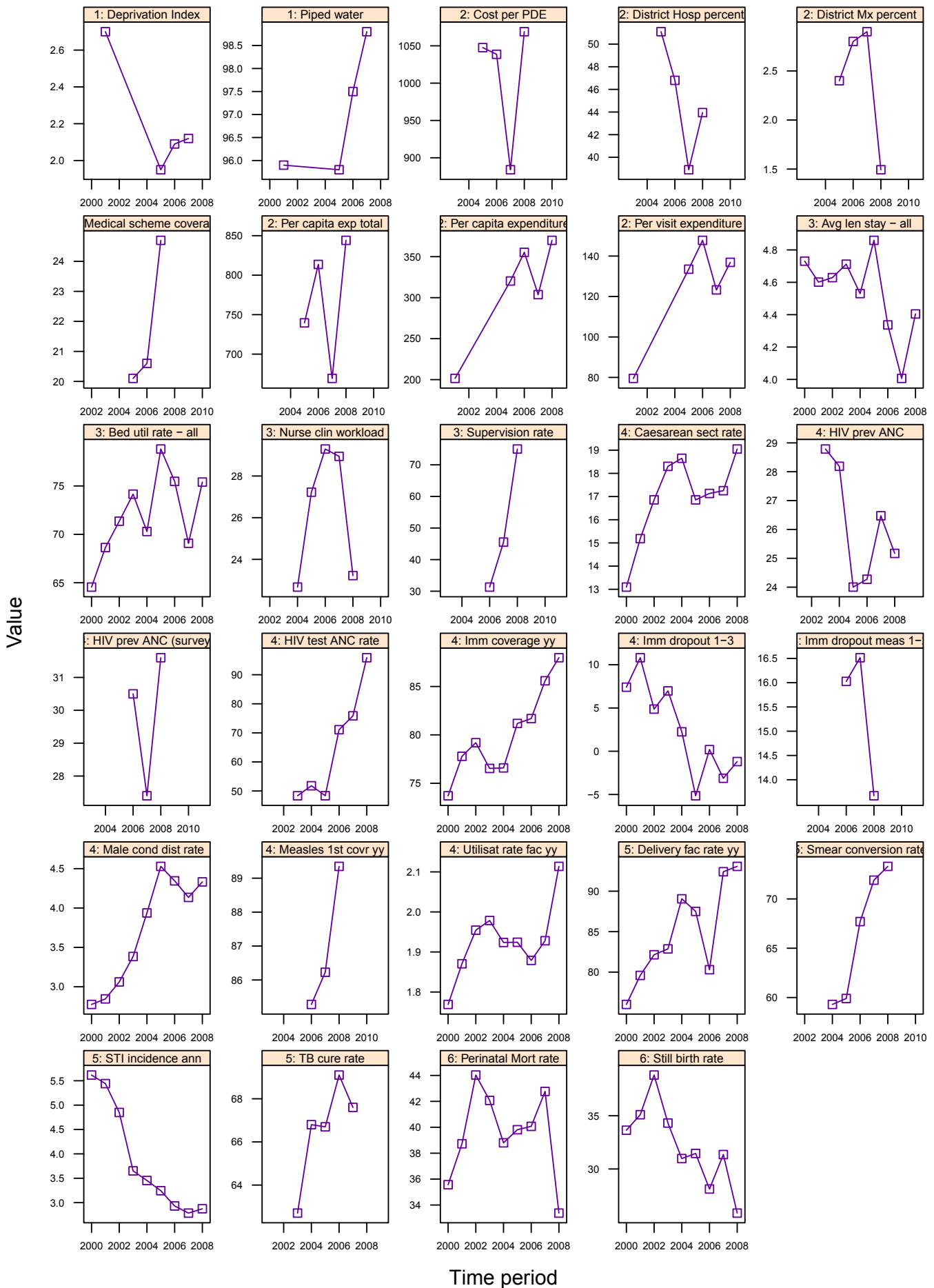


Annual indicators for Lejweleputswa District Municipality

DC18	Lejweleputswa District Municipality	Year								District Rank (1=best)	National value
		2001/02	2002/03	2003/04	2004/05	2005/06	2006/07	2007/08	2008/09		
Demographic and socio-economic	Population total					761 283	759 748	758 097	754 851		48 272 353
	Population Density					-	-	-	24		40
	Medical aid coverage (%)					14.4	16.2	14.6	-	21	14.3
	Access to piped water (%) - (2005-06 GHS, 2007 Comm. Survey)					97.8	97.3	97.4	-	12	88.7
	Deprivation index - (high value = most deprived)	2.83	-	-	-	2.17	2.00	2.04	-	21	-
	Socio-economic quintile - (1=poor, 5=best)	-	-	-	-	4	4	4	-	-	-
Input	Total PHC expenditure per capita - (real 2008/09 prices)	-	-	-	-	453	498	502	513	50	794
	Non-hospital PHC expenditure per capita - (real 2008/09 prices)	151	-	-	-	235	228	212	220	49	367
	% District health services expenditure on District Management	-	-	-	-	4.8	5.6	4.7	2.6		5.6
	% District health services expenditure on District Hospitals	-	-	-	-	35.7	35.4	36.6	36.5		41.8
	PHC (Non-Hospital) Expenditure per Patient Visit - (real 2008/09 prices)	71	-	-	-	125	124	115	107	41	128
	Cost per PDE - (real 2008/09 prices)	-	-	-	-	1 008	1 174	1 268	1 355		1096
Process	Nurse clinical workload	-	-	-	29.5	32.6	37.4	40.5	31.9	7	23.3
	Average length of stay (ALOS)	-	-	2.7	2.8	2.6	2.5	3.0	2.8	10	4.3
	Bed utilisation rate (BUR)	-	-	68.9	72.9	66.7	63.7	71.0	63.9	35	66.9
	Clinic supervision rate	-	-	-	-	-	36.6	41.8	55.5	33	61.4
Output	Male condom distribution rate	-	-	4.5	4.8	6.7	7.7	7.1	9.1	28	12.3
	Immunisation coverage < 1 year	-	-	71.3	86.4	95.5	107.1	89.6	95.1	18	89.5
	Immunisation drop-out rate (DTP1-3)	-	-	8.0	7.3	5.2	6.4	6.0	6.2	44	2.7
	Measles Coverage						101.3	90.9	95.8	37	91.8
	Measles drop-out rate						18.9	13.6	18.6	39	16.3
	Caesarean section rate	-	-	9.1	10.5	8.1	9.1	9.6	9.8		16.1
	Proportion ANC clients tested for HIV	-	-	22.2	18.9	28.0	53.3	74.7	83.7	41	86.7
	HIV prevalence among ANC clients tested (DHIS)	-	-	34.2	29.3	31.0	30.5	30.1	28.6	42	24.3
	HIV prevalence among ANC clients tested (survey)	-	-	-	-	-	34.1 (30.3-38)	37 (32.5-41.7)	33.8 (29.2-38.6)	38	29.3
	Baby PCR test around 6 weeks uptake								39.4		
	Antenatal client CD4 1st test rate								94.8		
Outcome	Utilisation rate	-	-	1.7	1.7	1.6	1.6	1.6	1.7	49	2.4
	Incidence of STI treated - new	-	-	4.5	4.3	4.7	4.4	4.1	4.0	25	4.6
	TB cure rate (2003 - 2007)	-	-	63.1	70.9	69.0	70.4	71.2		19	64.0
	TB smear conversion rate (2004 - 2008)	-	-	-	61.2	62.7	69.3	76.0	77.4	7	62.5
	TB case load (new Sm+)	-	-	-	-	-	-	3 205	3 292		138 803
	Delivery rate in facility	-	-	65.5	81.3	86.0	91.3	91.7	87.0	25	86.6
Impact	Stillbirth rate	-	-	38.4	34.0	35.0	29.2	31.6	28.4	48	22.3
	Perinatal mortality rate in facility	-	-	51.4	45.4	46.4	39.7	44.3	40.8	47	31.4

Number of health facilities and beds	Clinic	CHCs	Mobile Service	District Hospital	Regional Hospital	Provincial Tertiary Hospital	Central Hospital	Specialised Hospital	Private hospitals	Beds
Number of public sector facilities (2009) and beds (2009)	49	1	20	5	1	0	0	0		735
Number of private sector facilities and beds (2008)									3	1 017

Annual indicators for district: Motheo – DC17

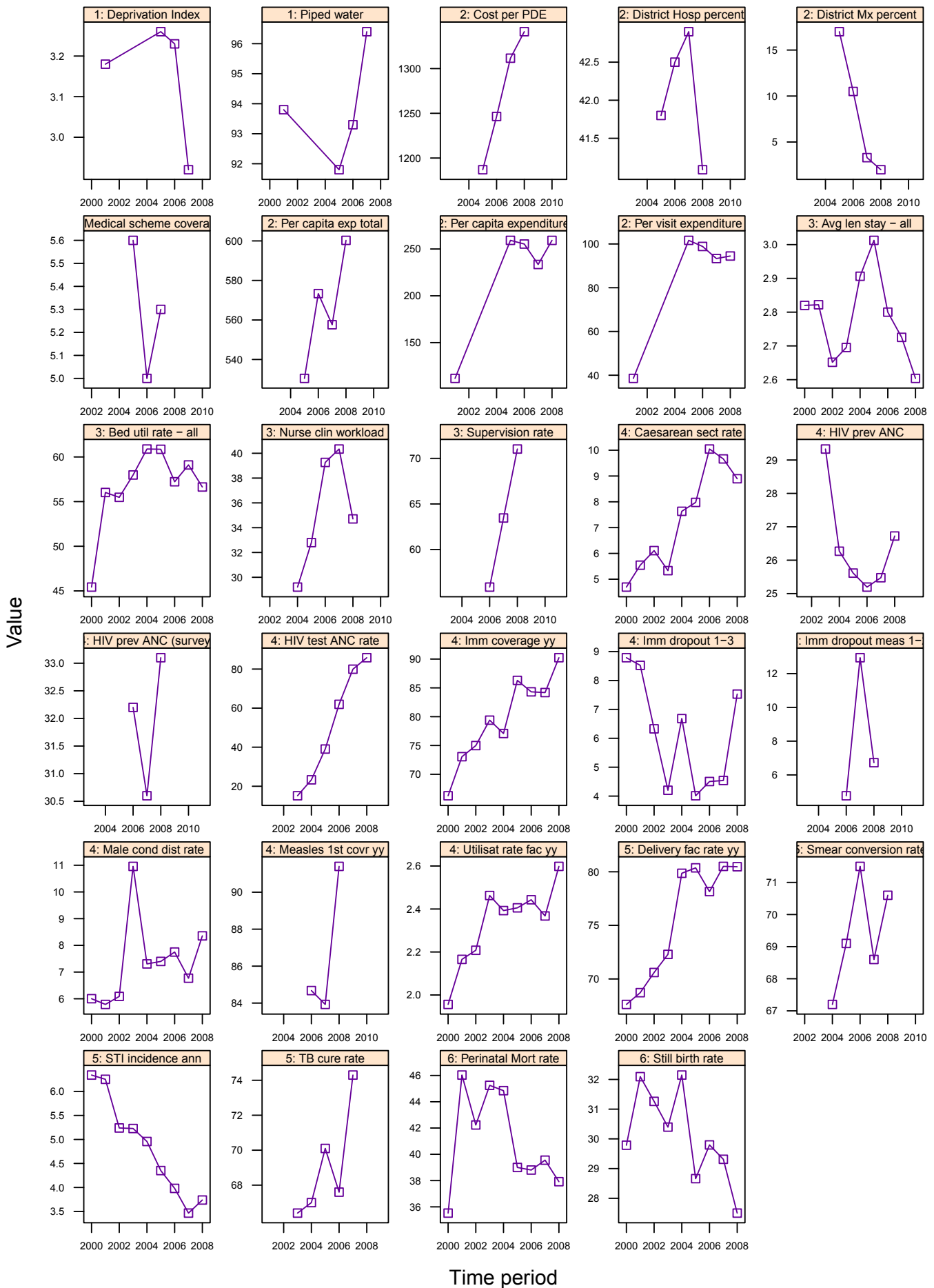


Annual indicators for Motheo District Municipality

DC17	Motheo District Municipality	Year								District Rank (1=best)	National value
		2001/02	2002/03	2003/04	2004/05	2005/06	2006/07	2007/08	2008/09		
Demographic and socio-economic	Population total					782 961	786 001	790 955	794 184		48 272 353
	Population Density					-	-	-	57		40
	Medical aid coverage (%)					20.1	20.6	24.7	-	3	14.3
	Access to piped water (%) - (2005-06 GHS, 2007 Comm. Survey)					95.8	97.5	98.8	-	3	88.7
	Deprivation index - (high value = most deprived)	2.70	-	-	-	1.95	2.09	2.12	-	22	-
	Socio-economic quintile - (1=poor, 5=best)	-	-	-	-	4	4	3	-	-	-
Input	Total PHC expenditure per capita - (real 2008/09 prices)	-	-	-	-	740	814	669	844	27	794
	Non-hospital PHC expenditure per capita - (real 2008/09 prices)	201	-	-	-	320	355	304	370	37	367
	% District health services expenditure on District Management	-	-	-	-	2.4	2.8	2.9	1.5		5.6
	% District health services expenditure on District Hospitals	-	-	-	-	51.1	46.8	38.9	43.9		41.8
	PHC (Non-Hospital) Expenditure per Patient Visit - (real 2008/09 prices)	80	-	-	-	134	148	123	137	16	128
	Cost per PDE - (real 2008/09 prices)	-	-	-	-	1 048	1 039	884	1 069		1096
Process	Nurse clinical workload	-	-	-	22.7	27.2	29.3	28.9	23.2	26	23.3
	Average length of stay (ALOS)	-	-	4.7	4.5	4.9	4.3	4.0	4.4	32	4.3
	Bed utilisation rate (BUR)	-	-	74.2	70.3	78.8	75.5	69.1	75.4	10	66.9
	Clinic supervision rate	-	-	-	-	-	31.3	45.5	75.0	13	61.4
Output	Male condom distribution rate	-	-	3.4	3.9	4.5	4.3	4.1	4.3	52	12.3
	Immunisation coverage < 1 year	-	-	76.5	76.6	81.2	81.7	85.6	88.0	28	89.5
	Immunisation drop-out rate (DTP1-3)	-	-	7.0	2.2	-5.1	0.2	-3.1	-1.2	7	2.7
	Measles Coverage						85.3	86.2	89.3	26	91.8
	Measles drop-out rate						16.0	16.5	13.7	27	16.3
	Caesarean section rate	-	-	18.3	18.7	16.9	17.1	17.3	19.0		16.1
	Proportion ANC clients tested for HIV	-	-	48.4	51.8	48.4	71.1	75.9	95.9	22	86.7
	HIV prevalence among ANC clients tested (DHIS)	-	-	28.8	28.2	24.0	24.3	26.5	25.2	31	24.3
	HIV prevalence among ANC clients tested (survey)	-	-	-	-	-	30.5 (26.8-34.3)	27.4 (23.4-31.8)	31.6 (26.6-37.1)	33	29.3
	Baby PCR test around 6 weeks uptake								13.6		
	Antenatal client CD4 1st test rate								86.0		
	Utilisation rate	-	-	2.0	1.9	1.9	1.9	1.9	2.1	39	2.4
Outcome	Incidence of STI treated - new	-	-	3.7	3.5	3.2	2.9	2.8	2.9	11	4.6
	TB cure rate (2003 - 2007)	-	-	62.7	66.8	66.7	69.1	67.6		26	64.0
	TB smear conversion rate (2004 - 2008)	-	-	-	59.3	59.9	67.7	71.9	73.3	12	62.5
	TB case load (new Sm+)	-	-	-	-	-	-	1 716	1 815		138 803
	Delivery rate in facility	-	-	82.9	89.1	87.5	80.3	92.4	93.1	17	86.6
Impact	Stillbirth rate	-	-	34.3	31.0	31.5	28.1	31.4	25.9	42	22.3
	Perinatal mortality rate in facility	-	-	42.1	38.8	39.8	40.1	42.8	33.4	35	31.4

Number of health facilities and beds	Clinic	CHCs	Mobile Service	District Hospital	Regional Hospital	Provincial Tertiary Hospital	Central Hospital	Specialised Hospital	Private hospitals	Beds
Number of public sector facilities (2009) and beds (2009)	69	5	20	4	1	0	1	3		2 652
Number of private sector facilities and beds (2008)									8	923

Annual indicators for district: Thabo Mofutsanyane – DC19

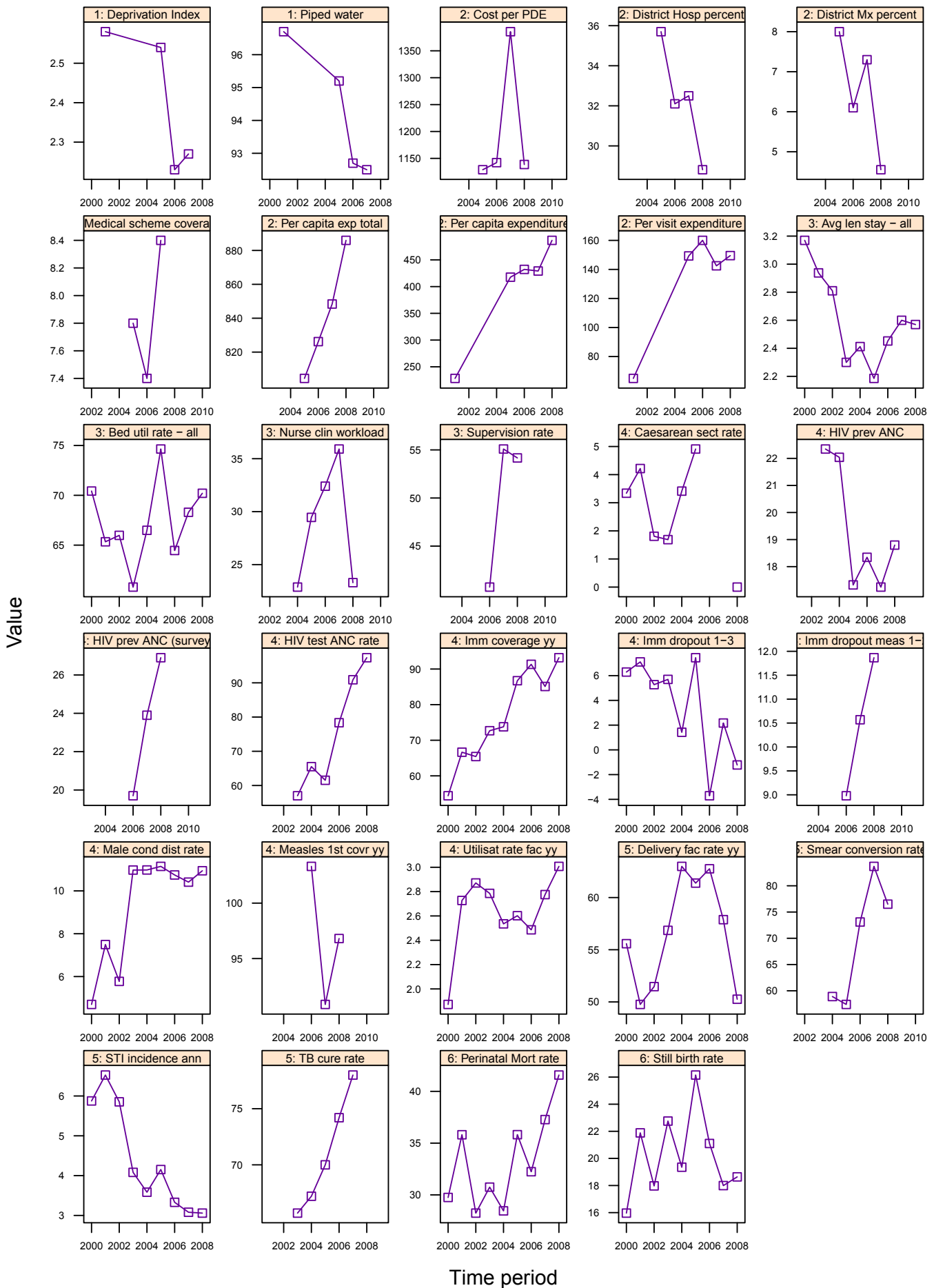


Annual indicators for Thabo Mofutsanyane District Municipality

DC19	Thabo Mofutsanyane District Municipality	Year								District Rank (1=best)	National value
		2001/02	2002/03	2003/04	2004/05	2005/06	2006/07	2007/08	2008/09		
Demographic and socio-economic	Population total					763 969	765 464	767 862	769 430		48 272 353
	Population Density					-	-	-	27		40
	Medical aid coverage (%)					5.6	5.0	5.3	-	45	14.3
	Access to piped water (%) - (2005-06 GHS, 2007 Comm. Survey)					91.8	93.3	96.4	-	17	88.7
	Deprivation index - (high value = most deprived)	3.18	-	-	-	3.26	3.23	2.92	-	32	-
	Socio-economic quintile - (1=poor, 5=best)	-	-	-	-	2	2	3	-	-	-
Input	Total PHC expenditure per capita - (real 2008/09 prices)	-	-	-	-	530	573	558	600	45	794
	Non-hospital PHC expenditure per capita - (real 2008/09 prices)	112	-	-	-	259	255	233	259	46	367
	% District health services expenditure on District Management	-	-	-	-	17.0	10.5	3.3	2.0		5.6
	% District health services expenditure on District Hospitals	-	-	-	-	41.8	42.5	42.9	41.1		41.8
	PHC (Non-Hospital) Expenditure per Patient Visit - (real 2008/09 prices)	39	-	-	-	102	99	93	94	47	128
	Cost per PDE - (real 2008/09 prices)	-	-	-	-	1 187	1 246	1 312	1 341		1096
Process	Nurse clinical workload	-	-	-	29.2	32.8	39.3	40.3	34.7	5	23.3
	Average length of stay (ALOS)	-	-	2.7	2.9	3.0	2.8	2.7	2.6	8	4.3
	Bed utilisation rate (BUR)	-	-	58.0	60.9	60.9	57.2	59.1	56.6	46	66.9
	Clinic supervision rate	-	-	-	-	-	55.9	63.5	71.0	20	61.4
Output	Male condom distribution rate	-	-	11.0	7.3	7.4	7.8	6.8	8.4	34	12.3
	Immunisation coverage < 1 year	-	-	79.4	77.1	86.3	84.3	84.2	90.2	22	89.5
	Immunisation drop-out rate (DTP1-3)	-	-	4.2	6.7	4.0	4.5	4.5	7.5	47	2.7
	Measles Coverage						84.7	83.9	91.4	28	91.8
	Measles drop-out rate						4.8	12.9	6.7	5	16.3
	Caesarean section rate	-	-	5.3	7.6	8.0	10.0	9.7	8.9		16.1
	Proportion ANC clients tested for HIV	-	-	15.1	23.3	39.1	62.0	79.9	85.8	38	86.7
	HIV prevalence among ANC clients tested (DHIS)	-	-	29.3	26.3	25.6	25.2	25.5	26.7	34	24.3
	HIV prevalence among ANC clients tested (survey)	-	-	-	-	-	32.2 (28.3-36.1)	30.6 (25.9-35.8)	33.1 (28.9-37.6)	37	29.3
	Baby PCR test around 6 weeks uptake								36.3		
	Antenatal client CD4 1st test rate								93.4		
	Utilisation rate	-	-	2.5	2.4	2.4	2.4	2.4	2.4	2.6	24
Outcome	Incidence of STI treated - new	-	-	5.2	5.0	4.4	4.0	3.5	3.7	22	4.6
	TB cure rate (2003 - 2007)	-	-	66.4	67	70.1	67.6	74.3		11	64.0
	TB smear conversion rate (2004 - 2008)	-	-		67.2	69.1	71.5	68.6	70.6	14	62.5
	TB case load (new Sm+)	-	-	-	-	-	-	2 588	2 419		138 803
	Delivery rate in facility	-	-	72.3	79.9	80.4	78.2	80.5	80.5	34	86.6
Impact	Stillbirth rate	-	-	30.4	32.1	28.7	29.8	29.3	27.5	46	22.3
	Perinatal mortality rate in facility	-	-	45.2	44.8	39.0	38.8	39.6	37.9	41	31.4

Number of health facilities and beds	Clinic	CHCs	Mobile Service	District Hospital	Regional Hospital	Provincial Tertiary Hospital	Central Hospital	Specialised Hospital	Private hospitals	Beds
Number of public sector facilities (2009) and beds (2009)	67	1	21	8	2	0	0	0		868
Number of private sector facilities and beds (2008)									1	107

Annual indicators for district: Xhariep – DC16



Annual indicators Xhariep District Municipality

DC16	Xhariep District Municipality	Year								District Rank (1=best)	National value
		2001/02	2002/03	2003/04	2004/05	2005/06	2006/07	2007/08	2008/09		
Demographic and socio-economic	Population total					132 376	132 934	133 666	134 140		48 272 353
	Population Density					-	-	-	4		40
	Medical aid coverage (%)					7.8	7.4	8.4	-	33	14.3
	Access to piped water (%) - (2005-06 GHS, 2007 Comm. Survey)					95.2	92.7	92.5	-	24	88.7
	Deprivation index - (high value = most deprived)	2.58	-	-	-	2.54	2.23	2.27	-	24	-
	Socio-economic quintile - (1=poor, 5=best)	-	-	-	-	3	3	3	-	-	-
Input	Total PHC expenditure per capita - (real 2008/09 prices)	-	-	-	-	804	826	848	886	23	794
	Non-hospital PHC expenditure per capita - (real 2008/09 prices)	228	-	-	-	418	432	429	487	35	367
	% District health services expenditure on District Management	-	-	-	-	8.0	6.1	7.3	4.6		5.6
	% District health services expenditure on District Hospitals	-	-	-	-	35.7	32.1	32.5	28.8		41.8
	PHC (Non-Hospital) Expenditure per Patient Visit - (real 2008/09 prices)	65	-	-	-	149	160	142	150	12	128
	Cost per PDE - (real 2008/09 prices)	-	-	-	-	1 129	1 142	1 386	1 139		1096
Process	Nurse clinical workload	-	-	-	22.9	29.5	32.4	35.9	23.3	25	23.3
	Average length of stay (ALOS)	-	-	2.3	2.4	2.2	2.5	2.6	2.6	7	4.3
	Bed utilisation rate (BUR)	-	-	60.8	66.5	74.6	64.5	68.3	70.2	22	66.9
	Clinic supervision rate	-	-	-	-	-	40.7	55.1	54.2	35	61.4
Output	Male condom distribution rate	-	-	11.0	11.0	11.1	10.7	10.4	10.9	21	12.3
	Immunisation coverage < 1 year	-	-	72.7	73.8	86.7	91.3	85.1	93.2	20	89.5
	Immunisation drop-out rate (DTP1-3)	-	-	5.7	1.4	7.5	-3.7	2.2	-1.2	6	2.7
	Measles Coverage						103.3	90.9	96.8	38	91.8
	Measles drop-out rate						9.0	10.6	11.9	19	16.3
	Caesarean section rate	-	-	1.7	3.4	4.9	0.0	0.0	0.0		16.1
	Proportion ANC clients tested for HIV	-	-	57.0	65.5	61.5	78.3	90.9	97.3	18	86.7
	HIV prevalence among ANC clients tested (DHIS)	-	-	22.3	22.0	17.3	18.3	17.2	18.8	17	24.3
	HIV prevalence among ANC clients tested (survey)	-	-	-	-	-	19.7 (12.4-26.9)	23.9 (16.9-32.7)	26.9 (16.8-40)	22	29.3
	Baby PCR test around 6 weeks uptake								0.0		
	Antenatal client CD4 1st test rate								115.7		
Utilisation rate	-	-	2.8	2.5	2.6	2.5	2.8	3.0	13	2.4	
Outcome	Incidence of STI treated - new	-	-	4.1	3.6	4.2	3.3	3.1	3.1	14	4.6
	TB cure rate (2003 - 2007)	-	-	65.7	67.2	70.0	74.2	78.0		6	64.0
	TB smear conversion rate (2004 - 2008)	-	-	-	58.9	57.4	73.1	83.7	76.5	9	62.5
	TB case load (new Sm+)	-	-	-	-	-	-	295	300		138 803
	Delivery rate in facility	-	-	56.9	63.0	61.4	62.8	57.9	50.3	51	86.6
Impact	Stillbirth rate	-	-	22.8	19.4	26.2	21.1	18.0	18.6	13	22.3
	Perinatal mortality rate in facility	-	-	30.8	28.5	35.8	32.2	37.3	41.6	50	31.4

Number of health facilities and beds	Clinic	CHCs	Mobile Service	District Hospital	Regional Hospital	Provincial Tertiary Hospital	Central Hospital	Specialised Hospital	Private hospitals	Beds
Number of public sector facilities (2009) and beds (2009)	18	1	19	4	0	0	0	0		84
Number of private sector facilities and beds (2008)									0	0