

10 Eastern Cape Province

Buffalo City Metropolitan Municipality (BUF)

The Buffalo City Metropolitan Municipality^a is a Category A municipality situated on the east coast of the Eastern Cape Province. The boundaries of the newly established municipality now make up a large area characterised by very different features. Two former municipalities, Transitional Local Councils – that of East London and King William’s Town – have merged into one. Other areas that were previously not included in either of them are now part of Buffalo City.

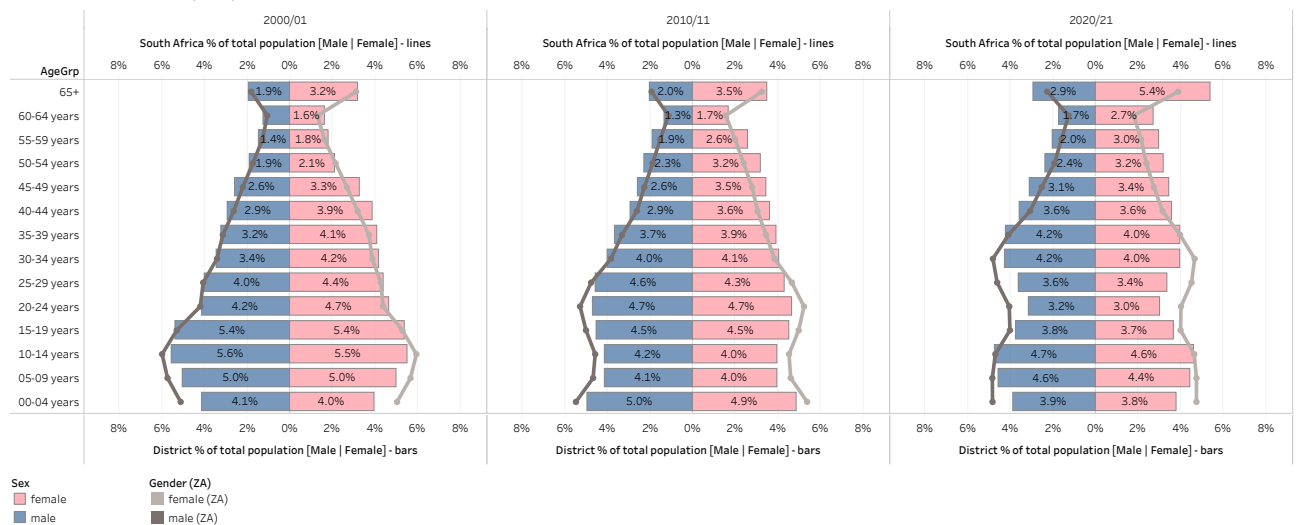
Cities/Towns: Beacon Bay, Berlin, Bisho, Breidbach, Dimbaza, East London, Kidd’s Beach, King William’s Town, Mdantsane, Phakamisa, Potsdam, Zwelitsha

Area: 2 750km²

Population (2019)^b: 866 514

District percentage population by age-gender group compared to South Africa

EC, Buffalo City MM (BUF)



Burden of disease profile

For the percentage of deaths by broad cause, deaths are classified into four groups, namely: (i) injuries; (ii) non-communicable diseases; (iii) HIV and TB; and (iv) communicable diseases together with maternal, perinatal and nutritional conditions. Data are given by gender and age group for the period 2012–2017. The second part of the graph shows the 10 leading single causes of death within each age group and by gender for 2012–2017.

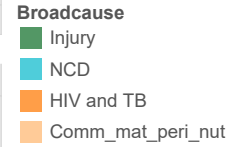
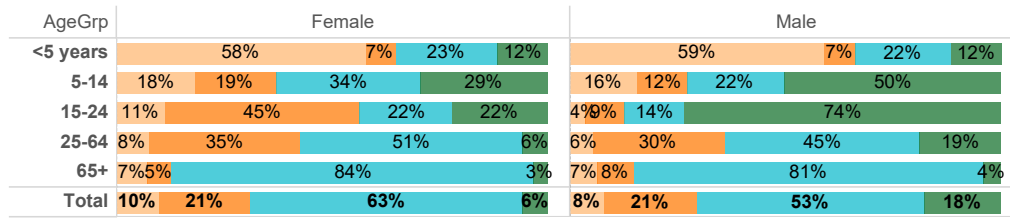
a Available from: <https://municipalities.co.za/overview/7/buffalo-city-metropolitan-municipality>.

b Mid-year Population Estimates 2019, Stats SA.

Percentage of deaths by broad cause and leading causes, 2012–2017

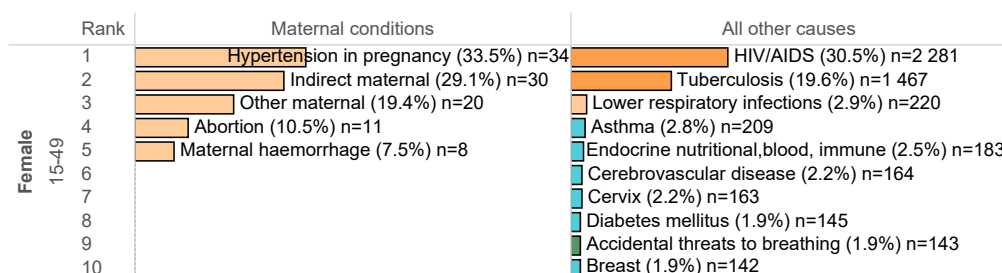
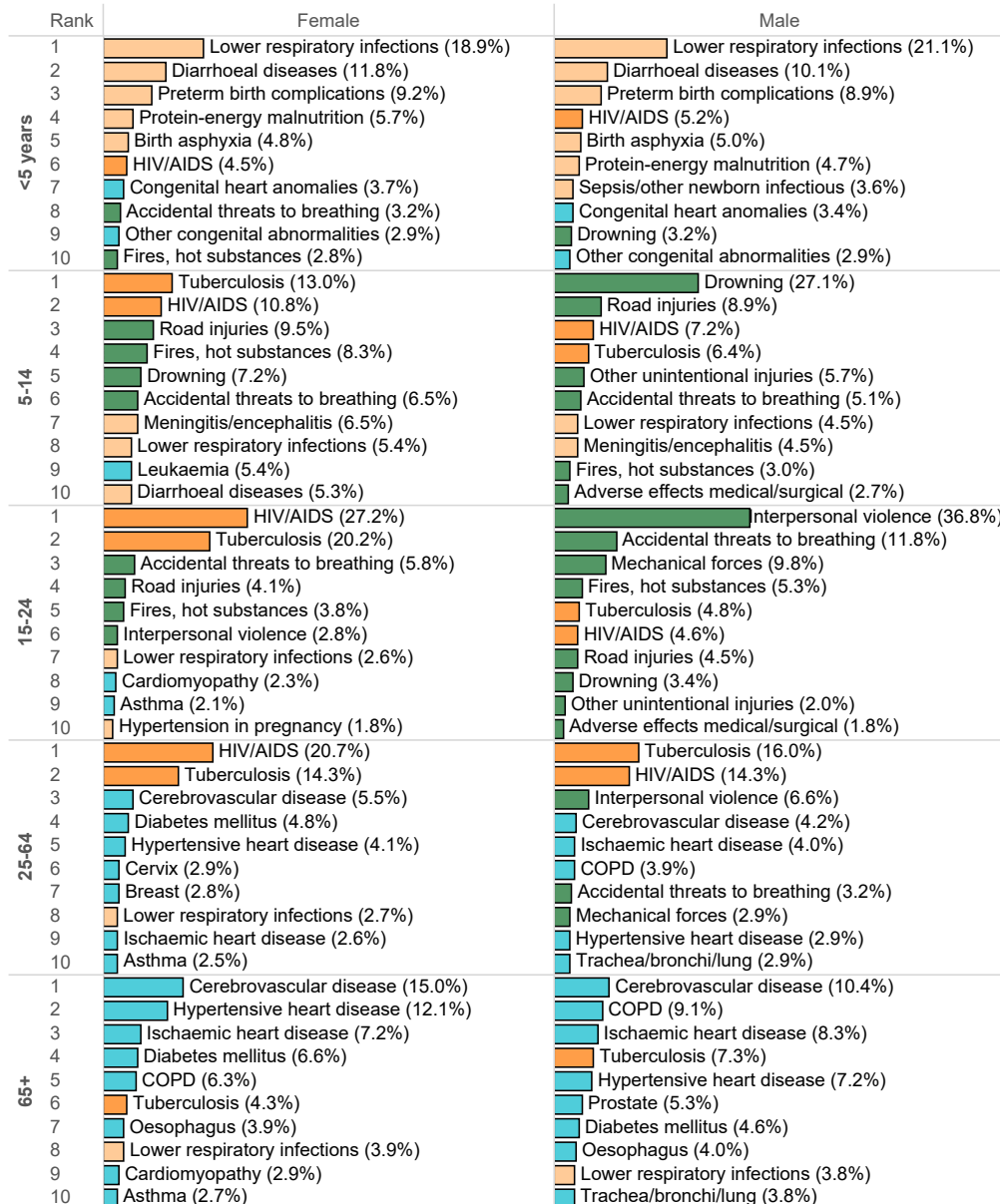
EC, Buffalo City MM: BUF, 2012 - 2017

Percentage of deaths by broad causes and single leading causes

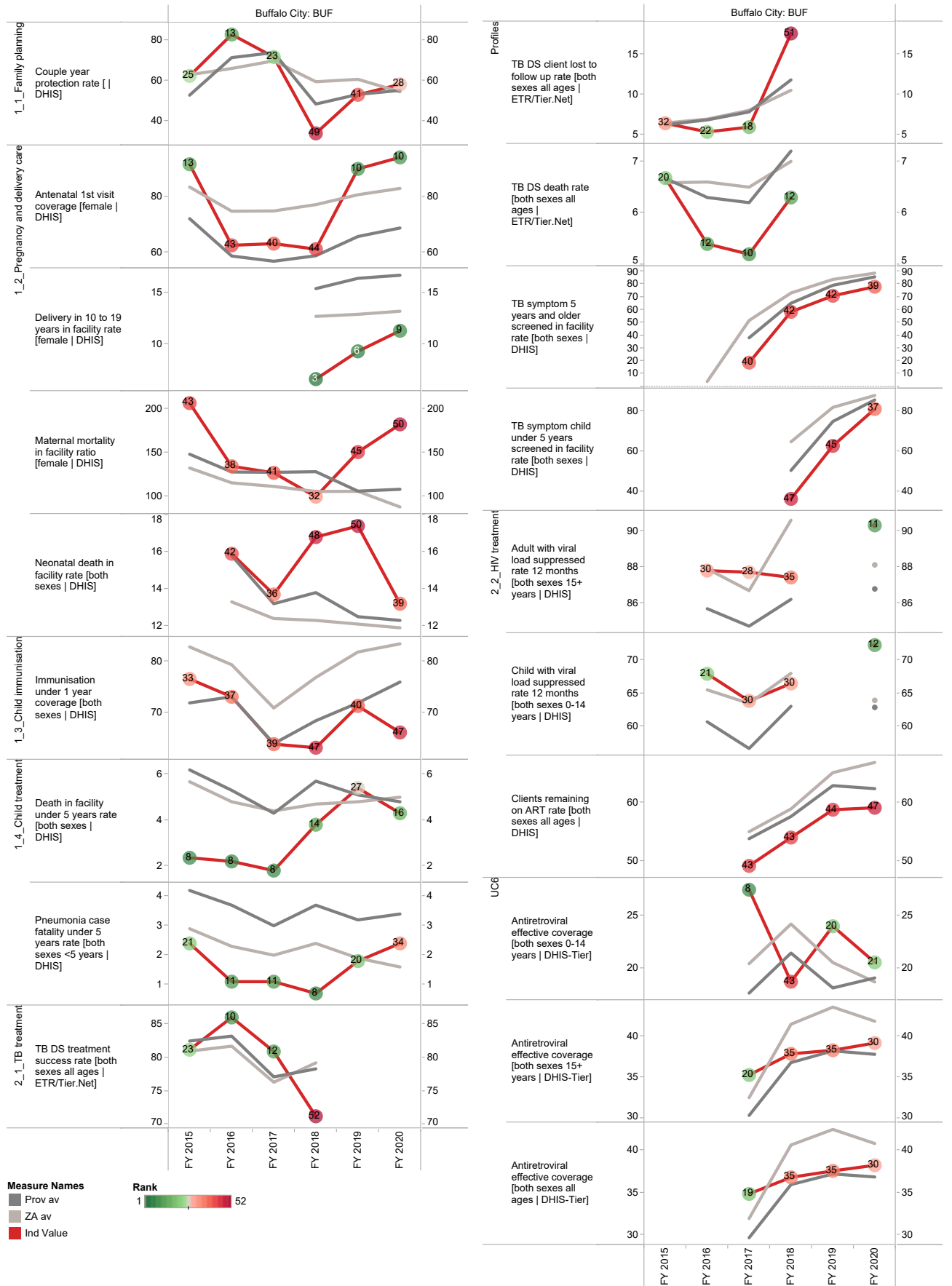


Prov, District
 EC, Buffalo City MM: BUF
 Show history

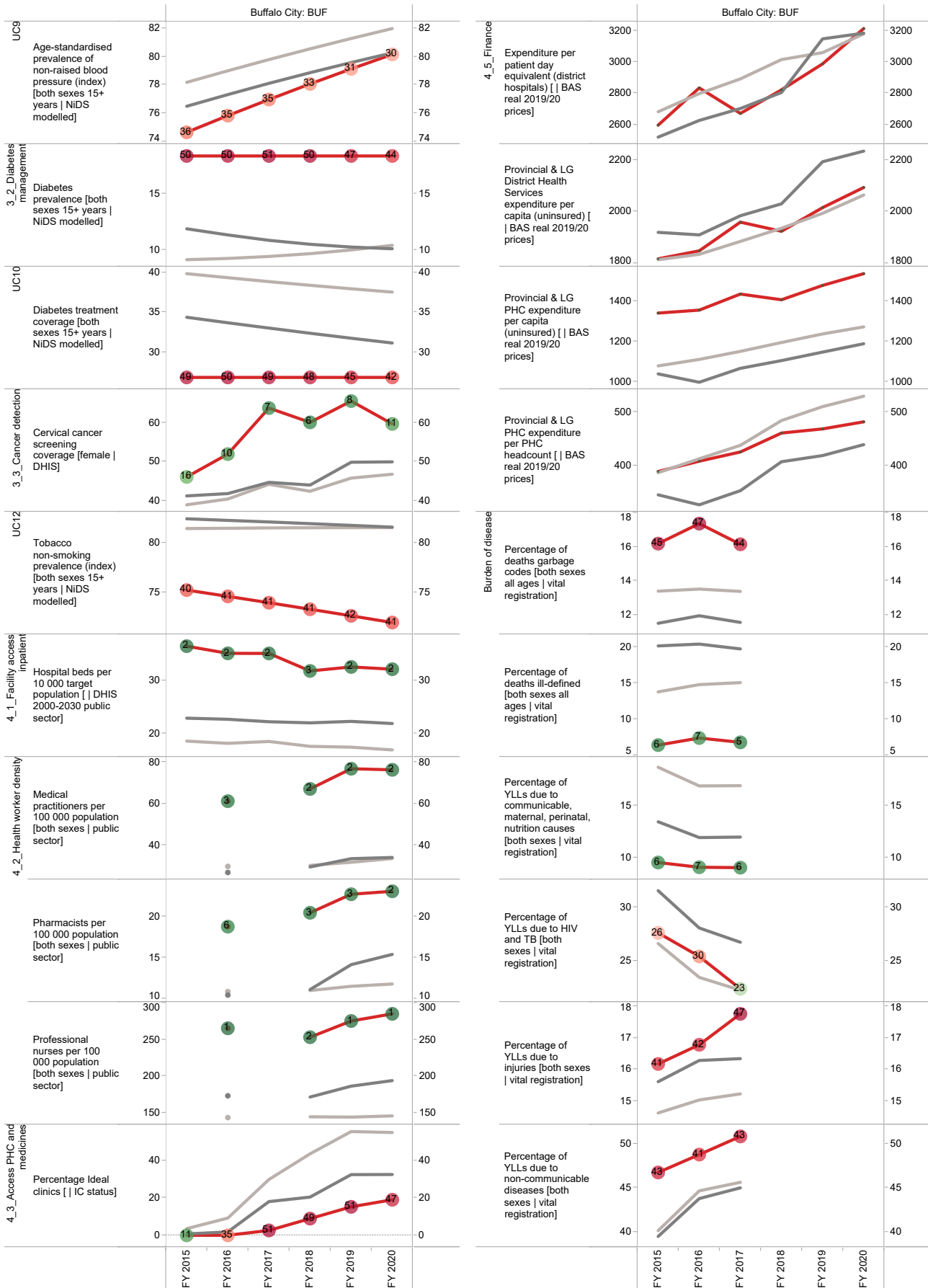
Percentages are shown according to all the deaths within the age/gender category of each box, although only the leading 10 causes are displayed.



Annual trends, 2015/16–2019/20



Section B: Profile Eastern Cape Province



Sarah Baartman District Municipality (DC10)

The Sarah Baartman District Municipality^c is a Category C municipality situated in the Eastern Cape Province. Sarah Baartman is the largest district in the province, making up approximately a third of its geographical area. It comprises seven local municipalities: Dr Beyers Naudé, Blue Crane Route, Makana, Ndlambe, Sundays River Valley, Kouga and Koukamma.

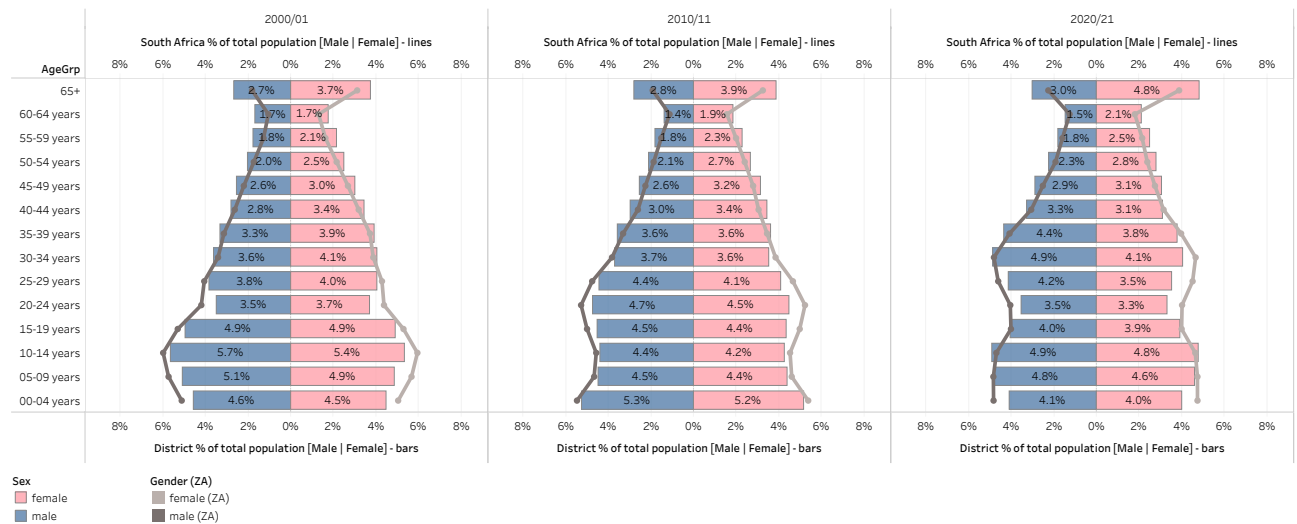
Cities/Towns: Aberdeen, Addo, Adendorp, Alexandria, Alicedale, Bathurst, Boknes/Cannon Rocks, Bushmans River, Cape St Francis, Clarkson, Cookhouse, Graaff-Reinet, Hankey, Humansdorp, Jansenville, Jeffreys Bay, Joubertina, Kareedouw, Kendrew, Kenton-on-Sea, Kirkwood, Klipplaat, Krakeel River, Loerie, Louterwater, Makhanda (Grahamstown), Misgund, Nieu-Bethesda, Nompumelelo, Oyster Bay, Patensie, Paterson, Pearston, Petersburg, Port Alfred, Riebeek East, Rietbron, Sanddrif, Seafield, Sidbury, Somerset East, St Francis Bay, Steytlerville, Storms River, Thornhill, Waterford, Willowmore, Woodlands

Area: 58 245km²

Population (2019)^d: 532 051

District percentage population by age-gender group compared to South Africa

EC, Sarah Baartman DM (DC10)



Burden of disease profile

For the percentage of deaths by broad cause, deaths are classified into four groups, namely: (i) injuries; (ii) non-communicable diseases; (iii) HIV and TB; and (iv) communicable diseases together with maternal, perinatal and nutritional conditions. Data are given by gender and age group for the period 2012–2017. The second part of the graph shows the 10 leading single causes of death within each age group and by gender for 2012–2017.

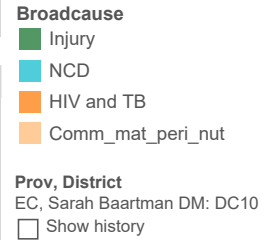
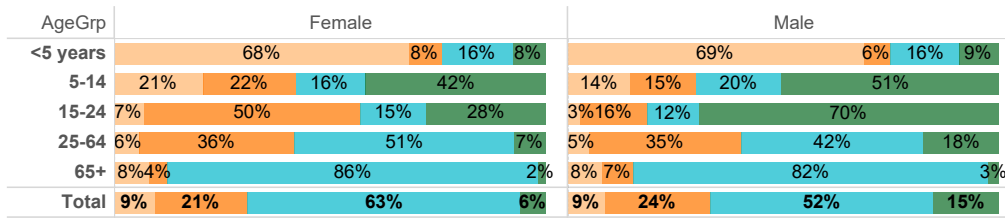
^c Available from: <https://municipalities.co.za/overview/103/sarah-baartman-district-municipality>.

^d Mid-year Population Estimates 2019, Stats SA.

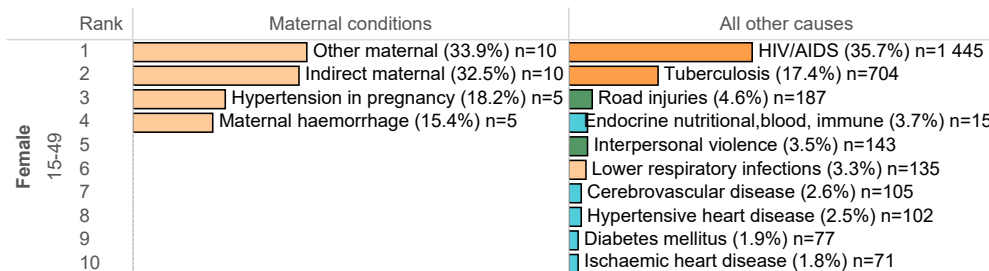
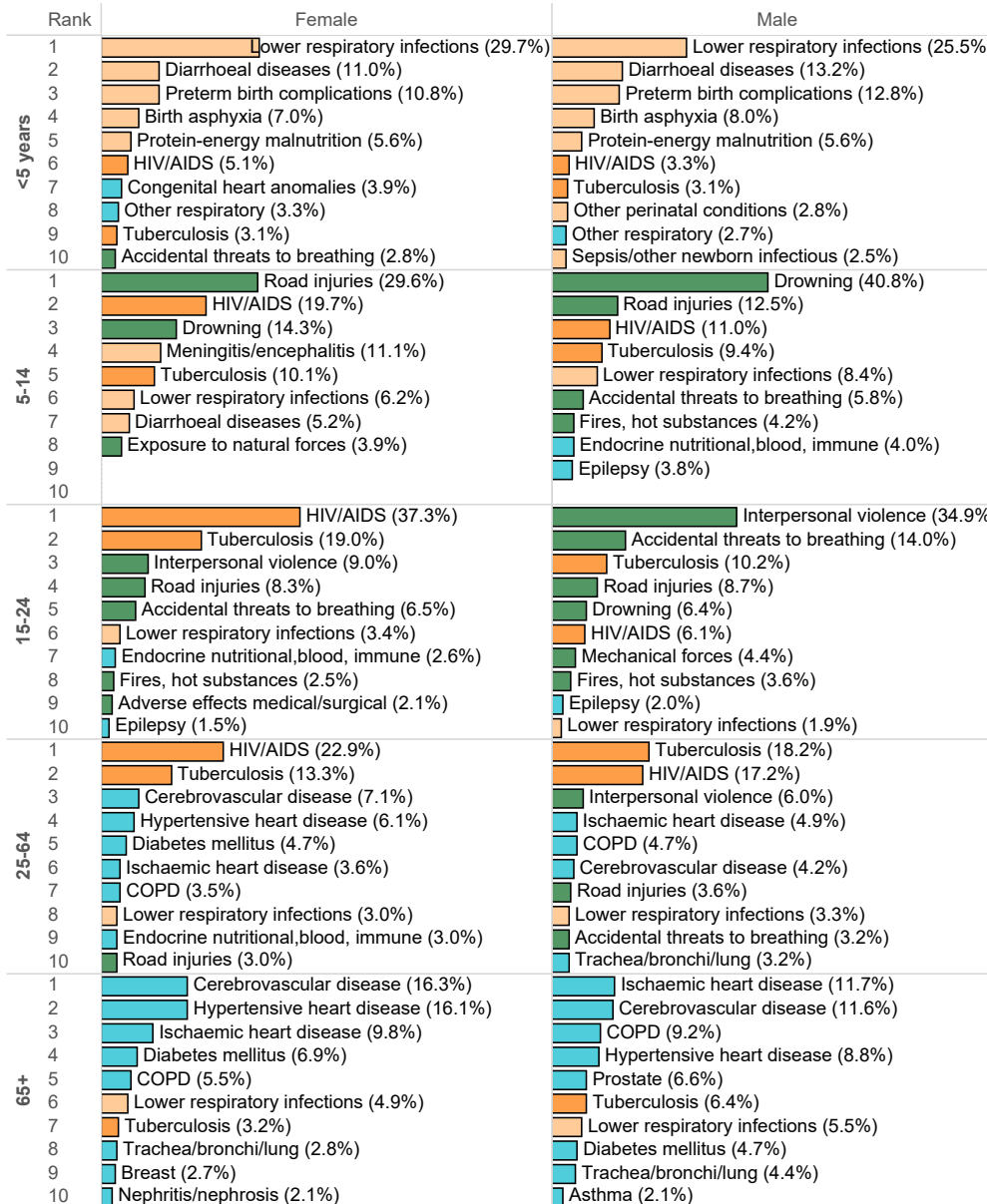
Percentage of deaths by broad cause and leading causes, 2012–2017

EC, Sarah Baartman DM: DC10, 2012 - 2017

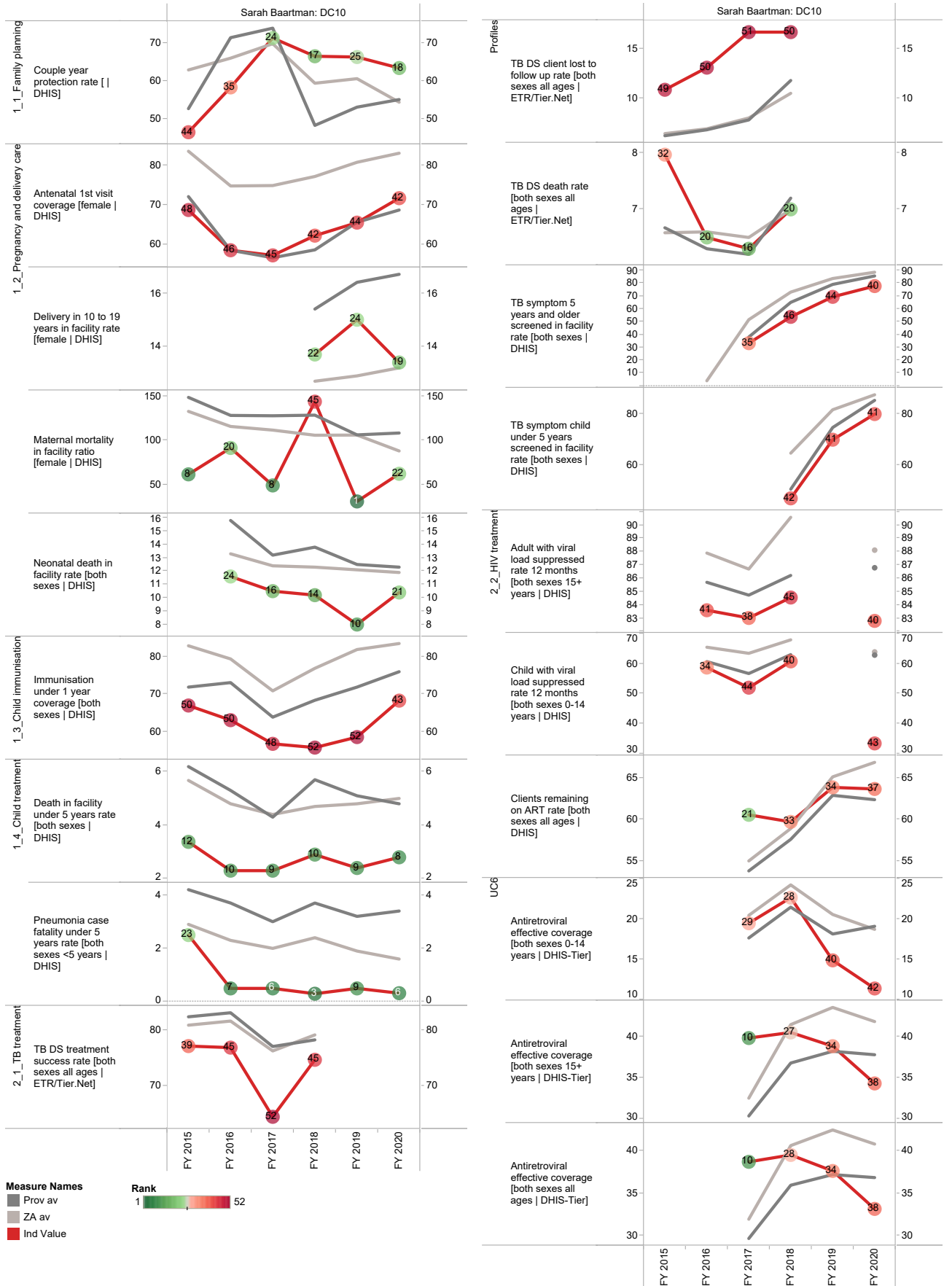
Percentage of deaths by broad causes and single leading causes



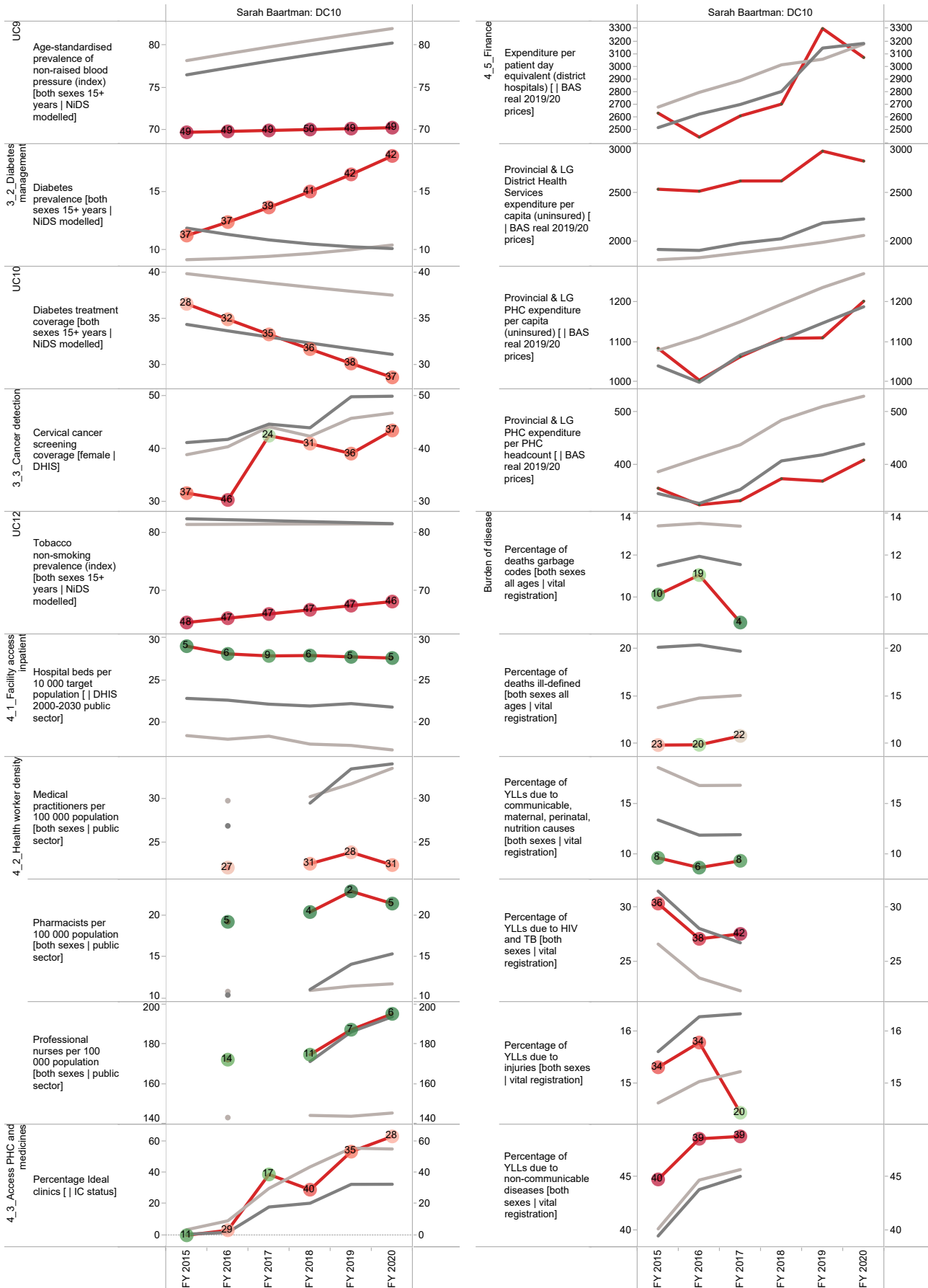
Percentages are shown according to all the deaths within the age/gender category of each box, although only the leading 10 causes are displayed.



Annual trends, 2015/16–2019/20



Section B: Profile Eastern Cape Province



Amathole District Municipality (DC12)

The Amathole District Municipality^e is a Category C municipality situated in the central part of the Eastern Cape. The district comprises six local municipalities: Mbashe, Mnquma, Great Kei, Amahlathi, Ngqushwa and Raymond Mhlaba.

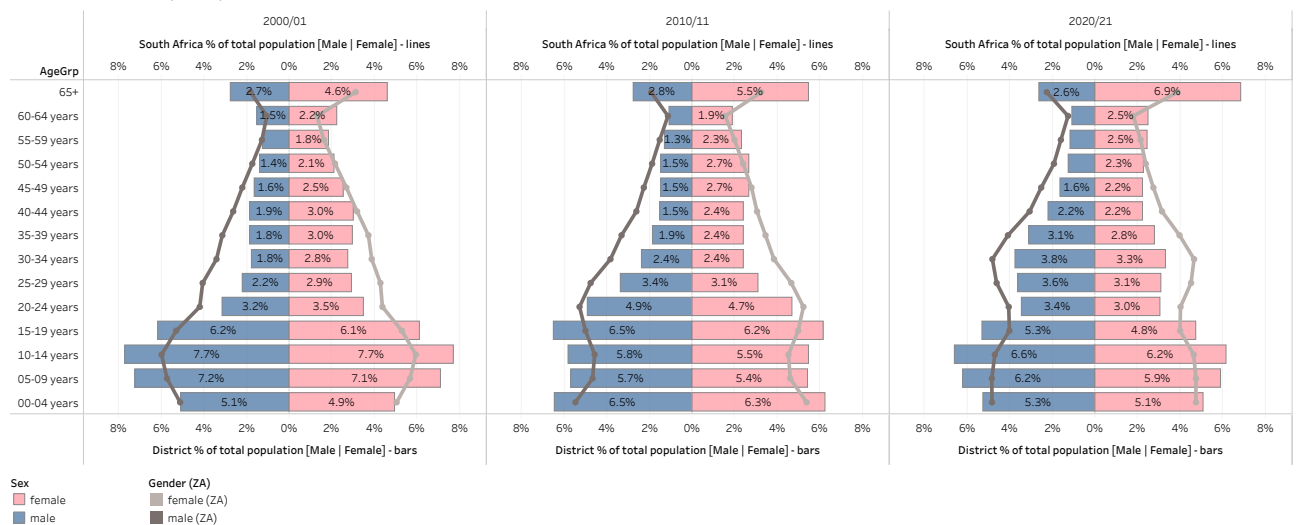
Cities/Towns: Adelaide, Alice, Amatola Coastal, Bedford, Butterworth, Cathcart, Dutywa, Elliotdale, Fort Beaufort, Hamburg, Hogsback, Kei Mouth, Kei Road, Keiskammahoek, Kentani, Komga, Middeldrift, Morgan Bay, Ngqamakhwe, Peddie, Seymore, Stutterheim, Willowvale

Area: 21 117km²

Population (2019)^f: 1 002 244

District percentage population by age-gender group compared to South Africa

EC, Amathole DM (DC12)



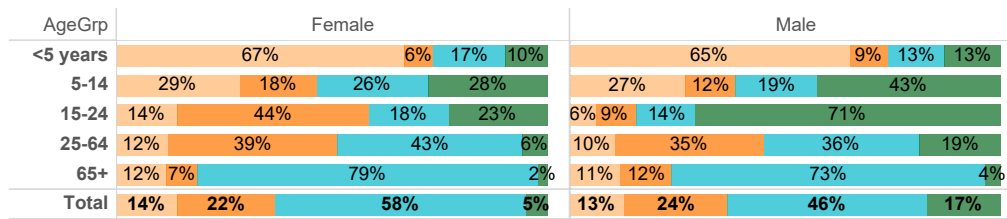
Burden of disease profile

For the percentage of deaths by broad cause, deaths are classified into four groups, namely: (i) injuries; (ii) non-communicable diseases; (iii) HIV and TB; and (iv) communicable diseases together with maternal, perinatal and nutritional conditions. Data are given by gender and age group for the period 2012–2017. The second part of the graph shows the 10 leading single causes of death within each age group and by gender for 2012–2017.

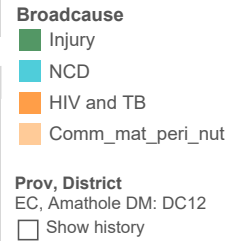
e Available from: <https://municipalities.co.za/overview/102/amathole-district-municipality>.

f Mid-year Population Estimates 2019, Stats SA.

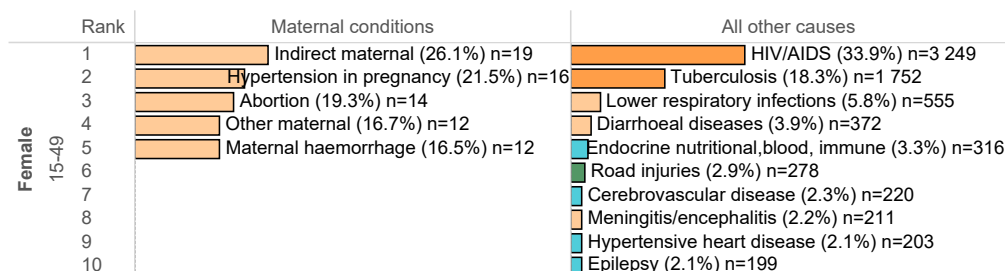
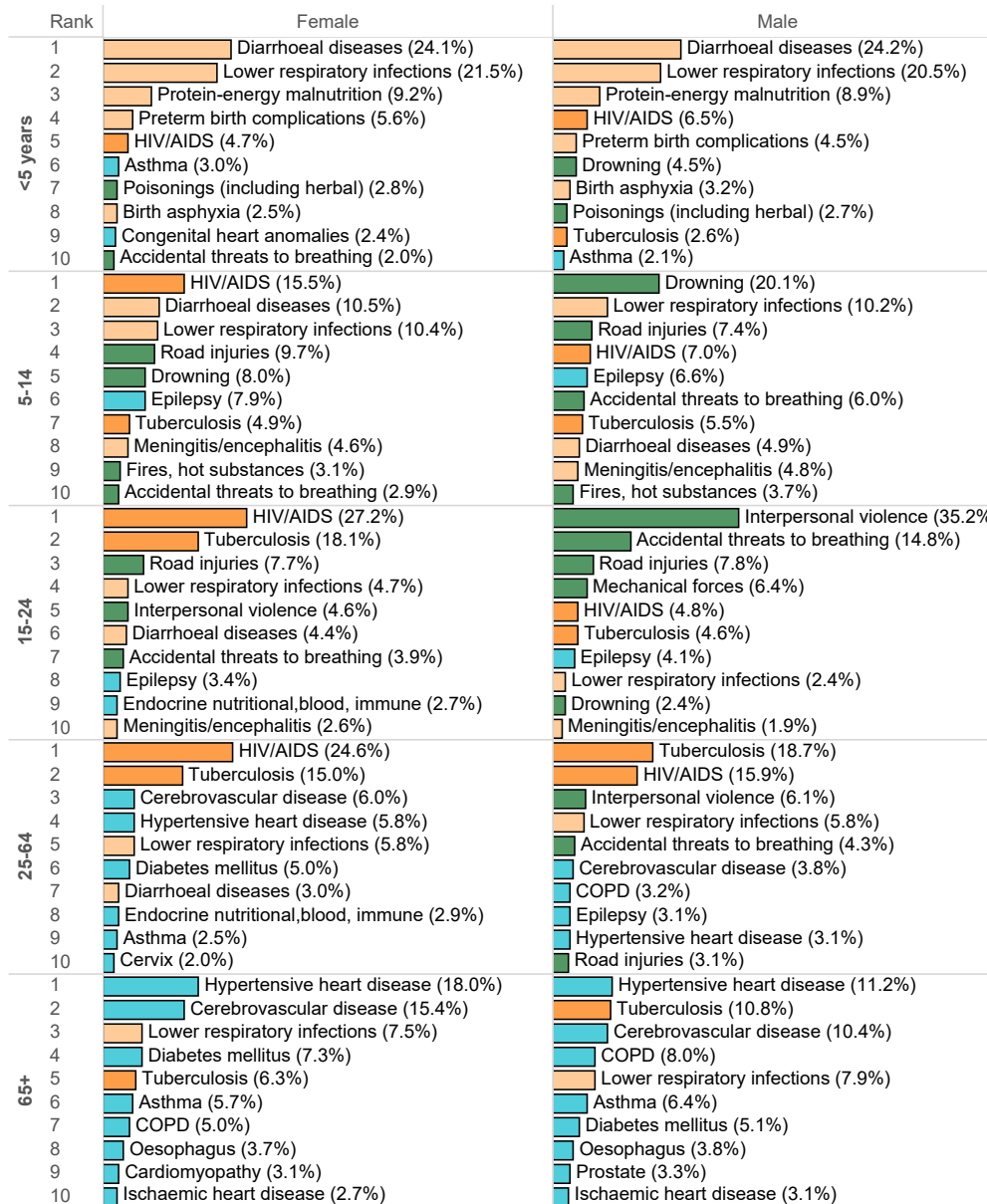
Percentage of deaths by broad cause and leading causes, 2012–2017
EC, Amathole DM: DC12, 2012 - 2017



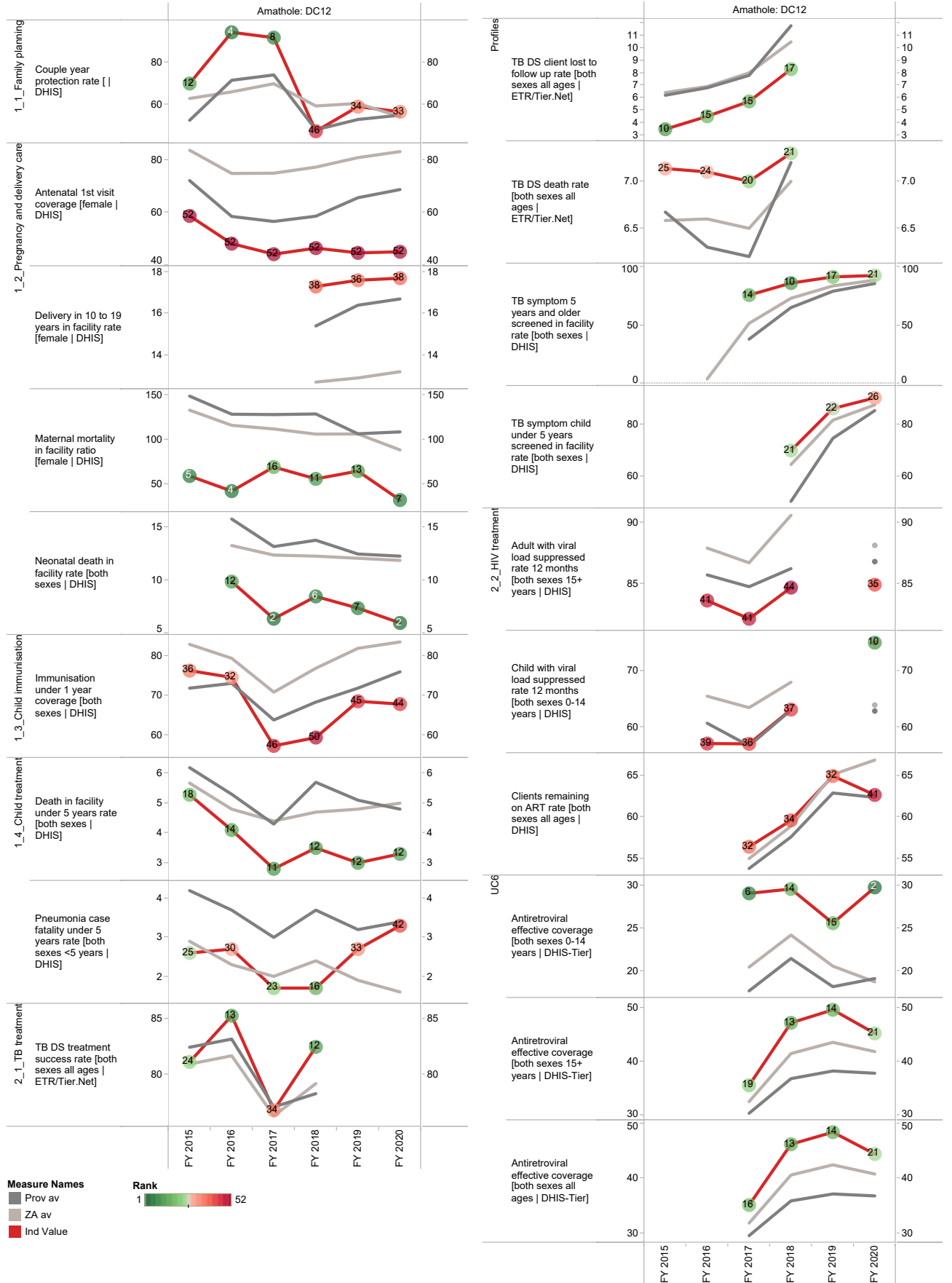
Percentage of deaths by broad causes and single leading causes



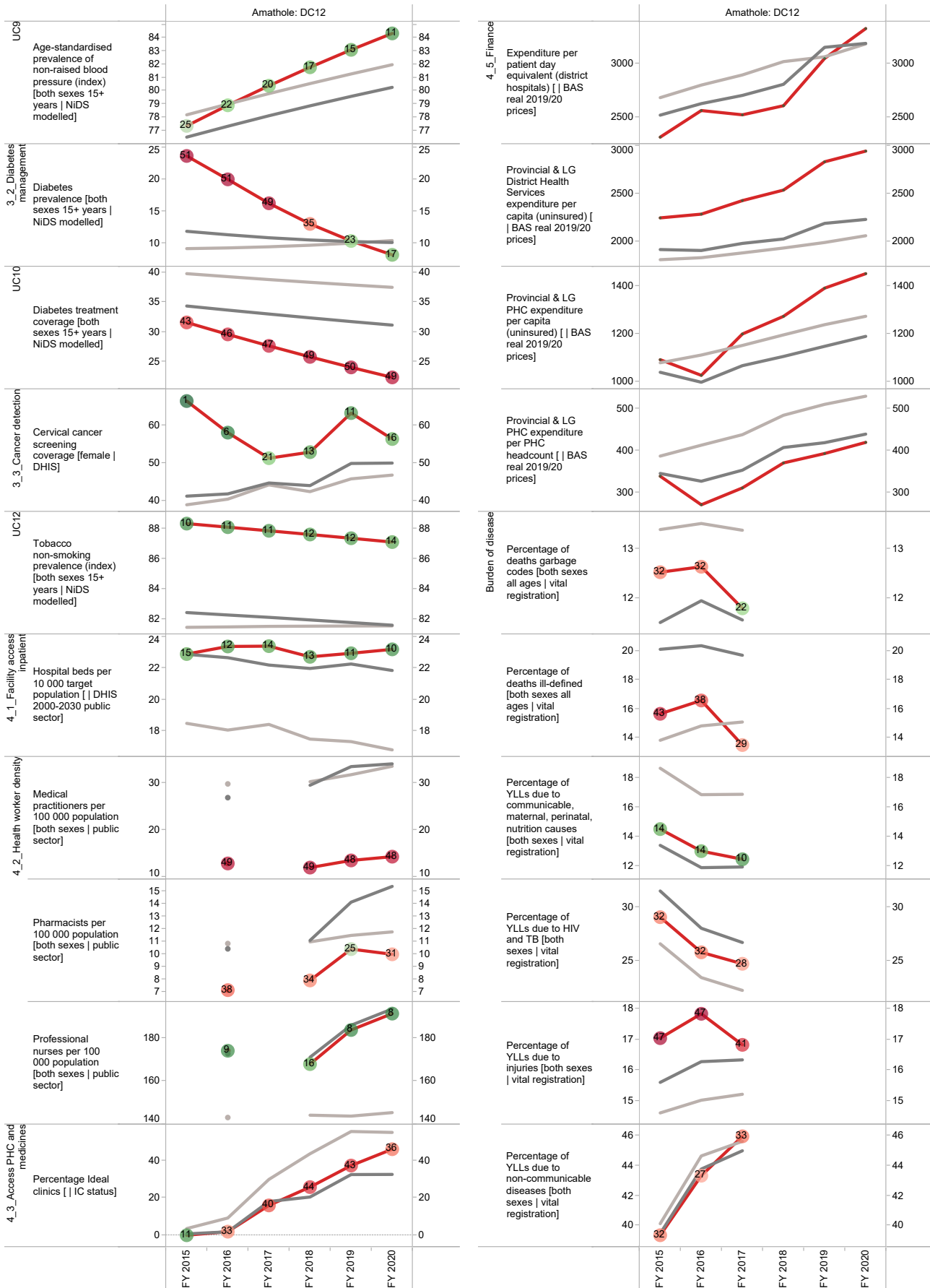
Percentages are shown according to all the deaths within the age/gender category of each box, although only the leading 10 causes are displayed.



Annual trends, 2015/16–2019/20



Section B: Profile Eastern Cape Province



Chris Hani District Municipality (DC13)

The Chris Hani District Municipality^g is a Category C municipality situated in the north-eastern part of the Eastern Cape, and is a linking node to all regions in the province. Chris Hani is the second-largest district in the province, making up almost a third of its geographical area. The district comprises six local municipalities: Inxuba Yethemba, Enoch Mgijima, Intsika Yethu, Engcobo, Sakhisizwe and Emalahleni.

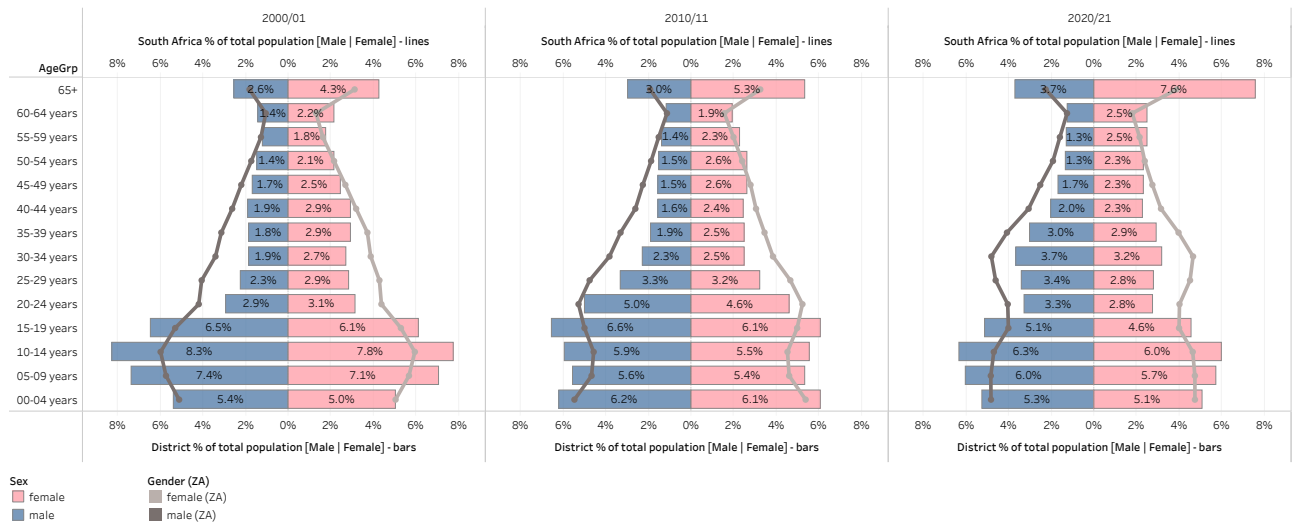
Cities/Towns: Cacadu (Lady Frere), Cala, Cofimvaba, Cradock, Dordrecht, Engcobo, Hofmeyr, Indwe, Khowa (Elliot), Komani (Queenstown), Middelburg, Molteno, Mount Zebra National Park, Sada, Sterkstroom, Tarkastad, Tsomo, Whittlesea

Area: 36 407km²

Population (2019)^h: 822 087

District percentage population by age-gender group compared to South Africa

EC, C Hani DM (DC13)



Burden of disease profile

For the percentage of deaths by broad cause, deaths are classified into four groups, namely: (i) injuries; (ii) non-communicable diseases; (iii) HIV and TB; and (iv) communicable diseases together with maternal, perinatal and nutritional conditions. Data are given by gender and age group for the period 2012–2017. The second part of the graph shows the 10 leading single causes of death within each age group and by gender for 2012–2017.

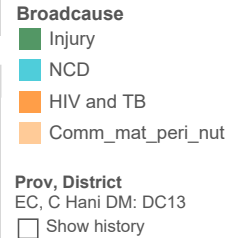
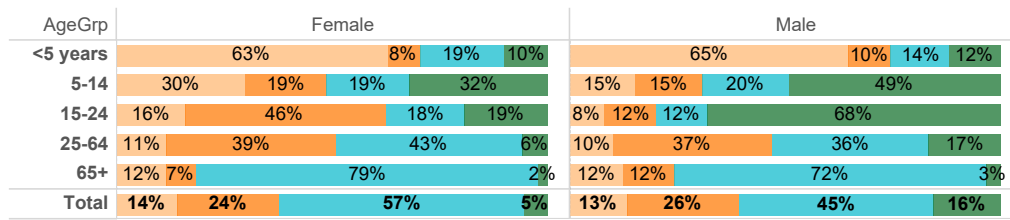
g Available from: <https://municipalities.co.za/overview/104/chris-hani-district-municipality>.

h Mid-year Population Estimates 2019, Stats SA.

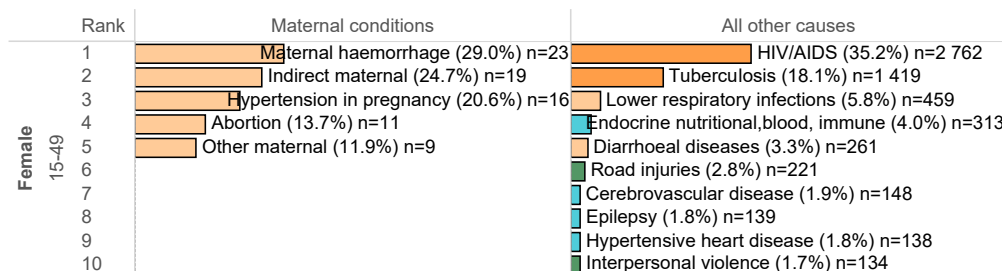
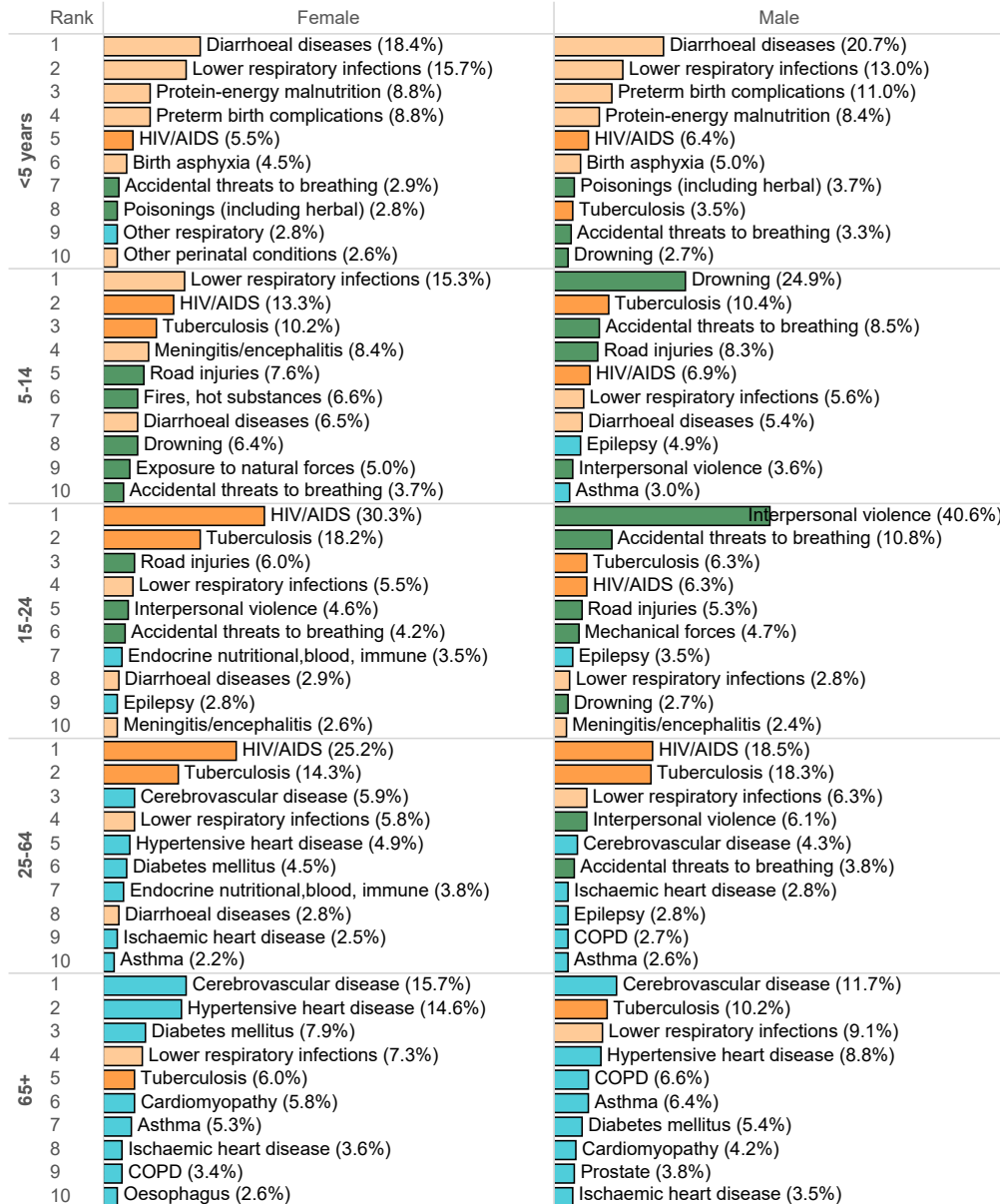
Percentage of deaths by broad cause and leading causes, 2012–2017

EC, C Hani DM: DC13, 2012 - 2017

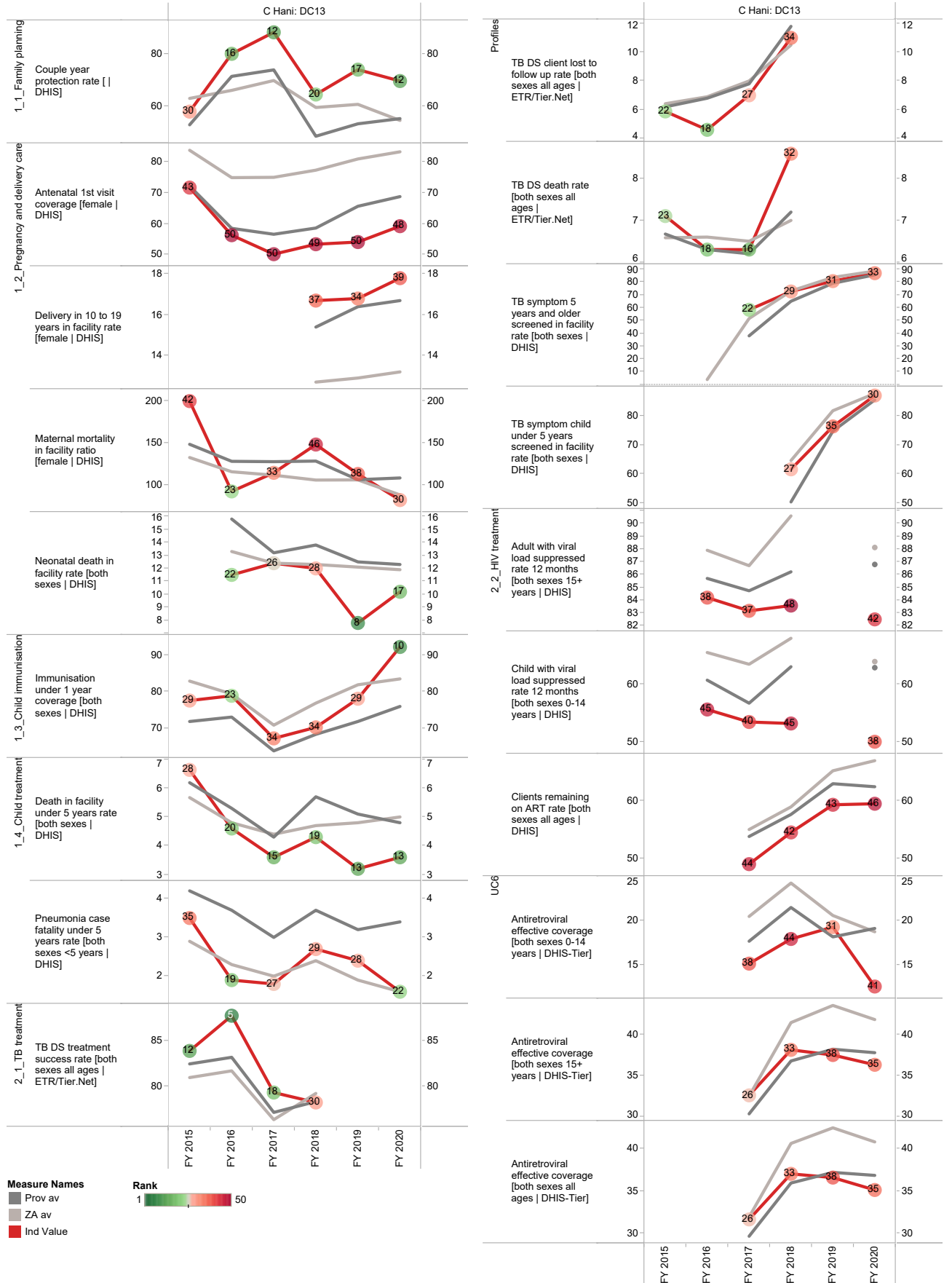
Percentage of deaths by broad causes and single leading causes



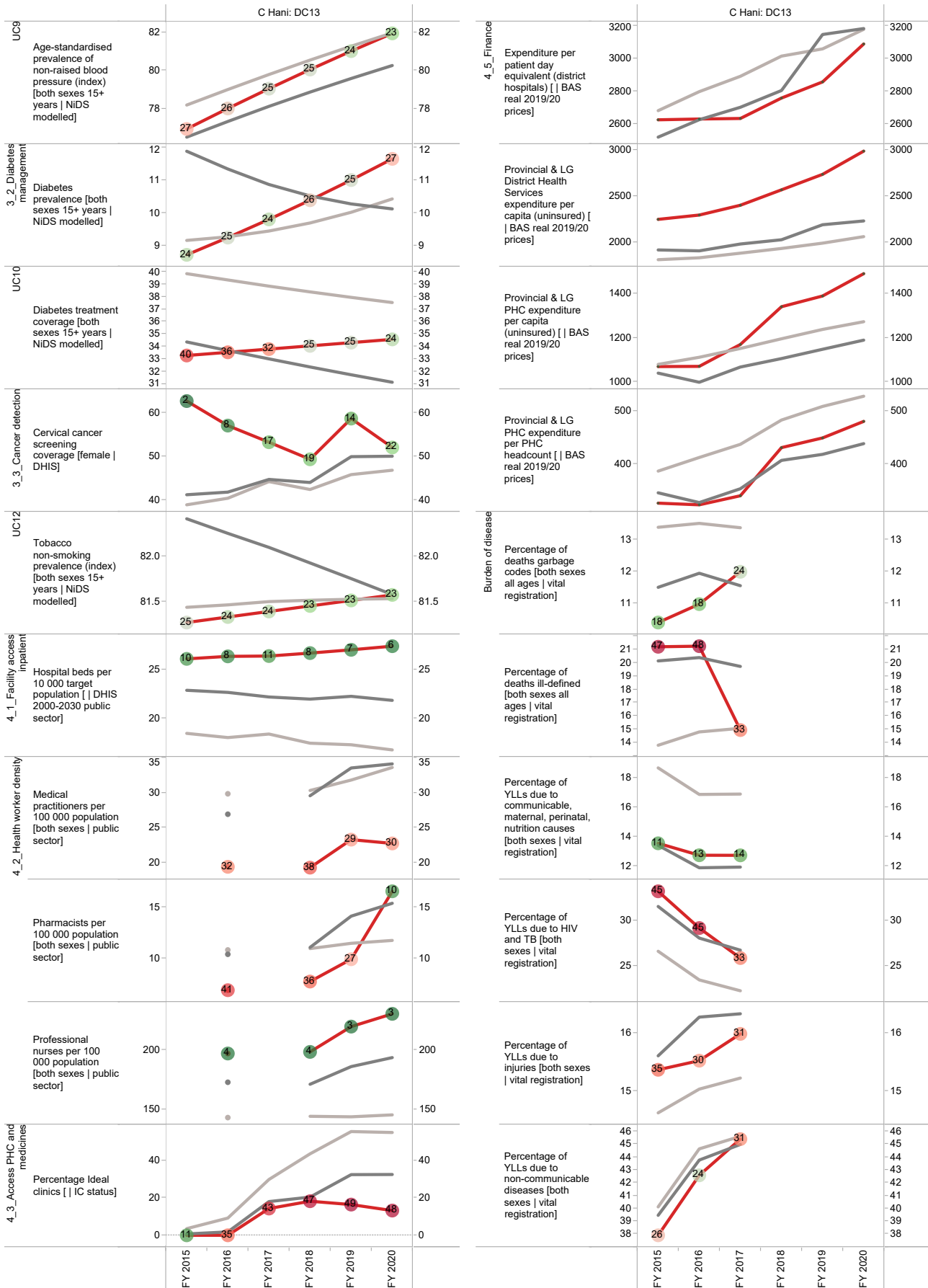
Percentages are shown according to all the deaths within the age/gender category of each box, although only the leading 10 causes are displayed.



Annual trends, 2015/16–2019/20



Section B: Profile Eastern Cape Province



Joe Gqabi District Municipality (DC 14)

The Joe Gqabi District Municipalityⁱ is a Category C municipality located within the Eastern Cape. It consists of three local municipalities: Elundini, Walter Sisulu and Senqu.

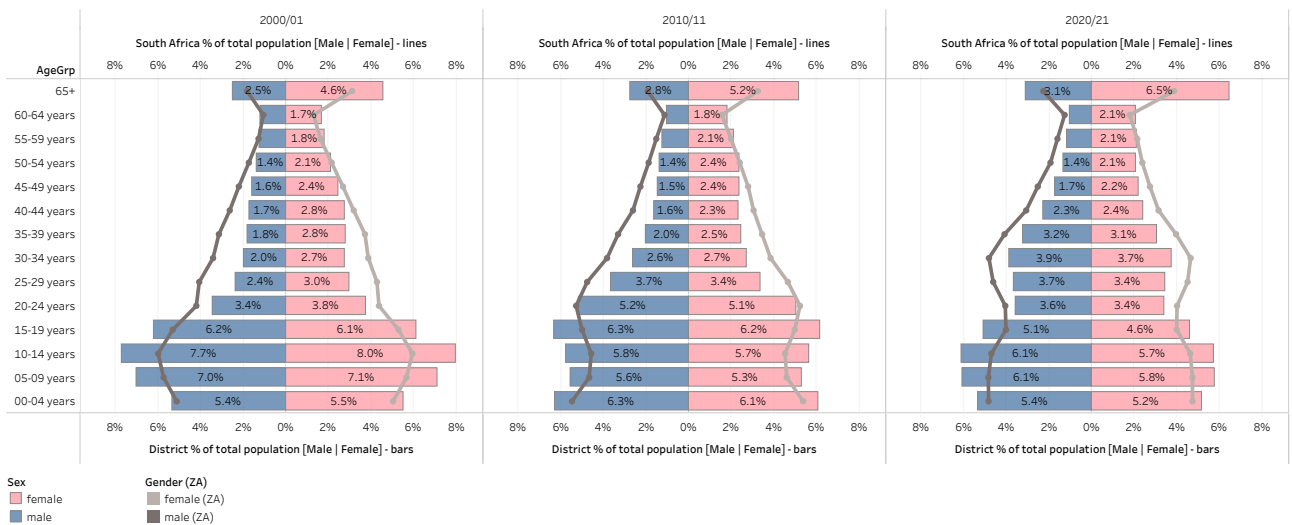
Cities/Towns: Aliwal North, Barkly East, Burgersdorp, Jamestown, Lady Grey, Maclear, Mount Fletcher, Oviston, Rhodes, Rossouw, Sterkspruit, Steynsburg, Ugie, Venterstad.

Area: 25 617km²

Population (2019)^j: 377 137

District percentage population by age-gender group compared to South Africa

EC, Joe Gqabi DM (DC14)



Burden of disease profile

For the percentage of deaths by broad cause, deaths are classified into four groups, namely: (i) injuries; (ii) non-communicable diseases; (iii) HIV and TB; and (iv) communicable diseases together with maternal, perinatal and nutritional conditions. Data are given by gender and age group for the period 2012–2017. The second part of the graph shows the 10 leading single causes of death within each age group and by gender for 2012–2017.

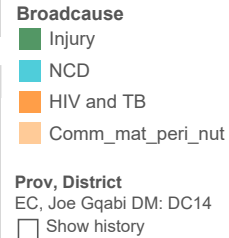
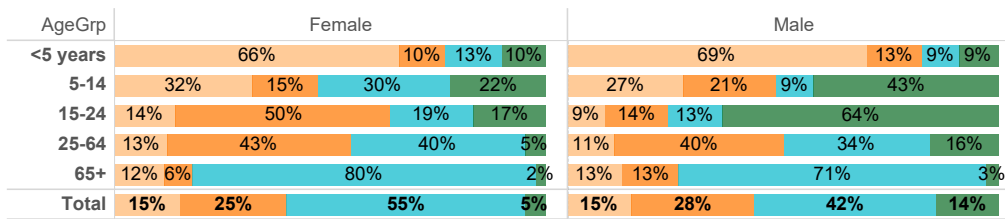
i Available from: <https://municipalities.co.za/overview/105/joe-gqabi-district-municipality>.

j Mid-year Population Estimates 2019, Stats SA.

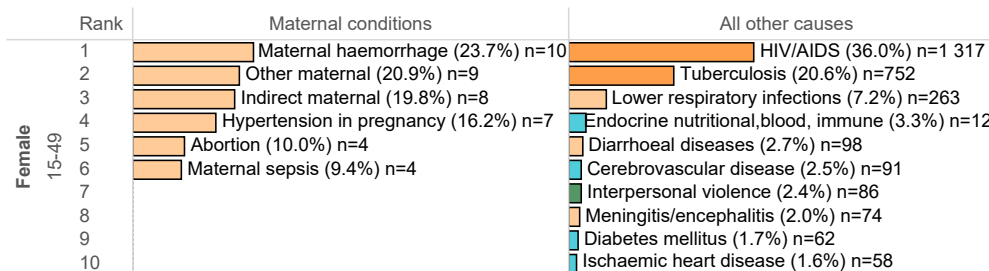
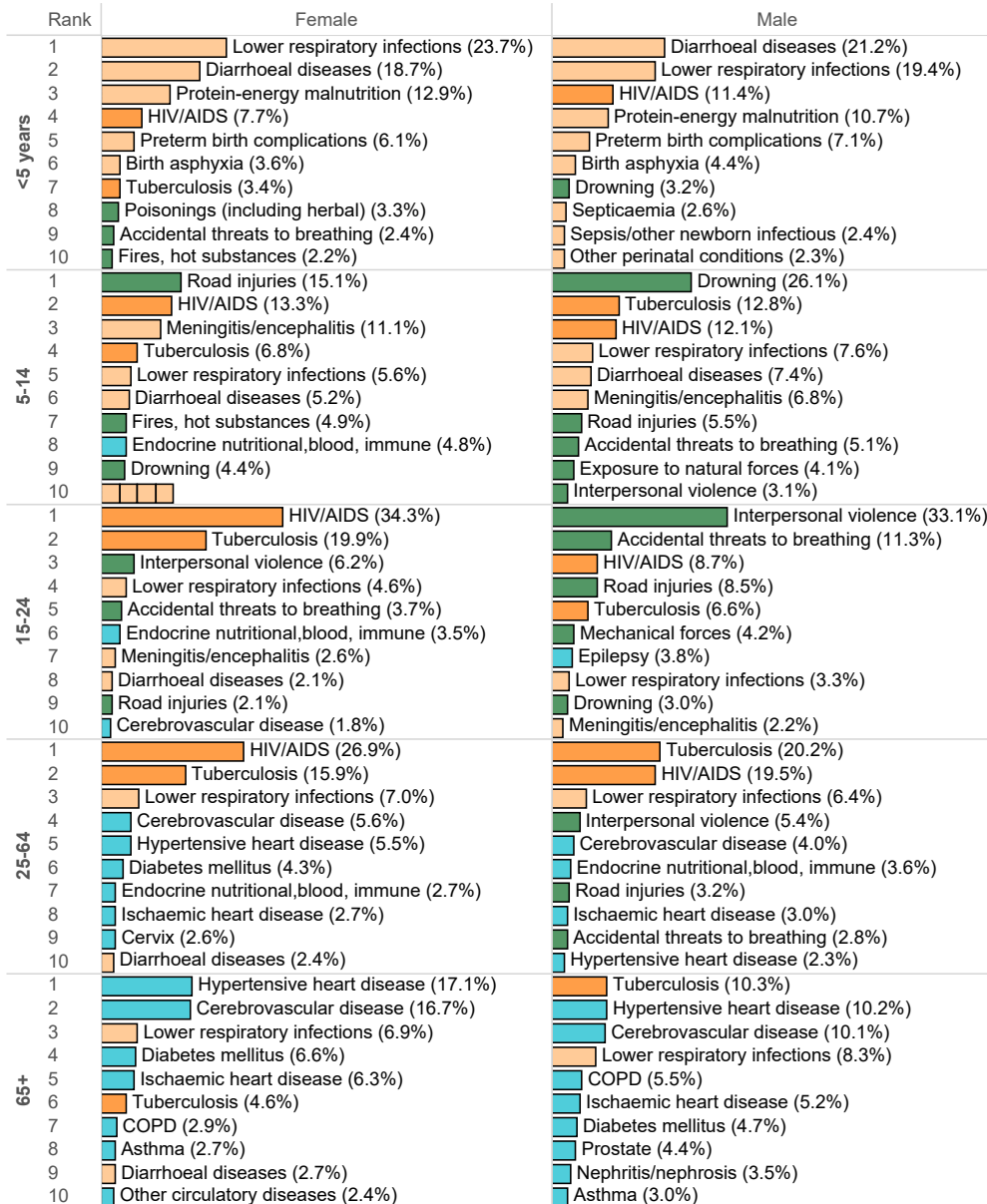
Percentage of deaths by broad cause and leading causes, 2012–2017

EC, Joe Gqabi DM: DC14, 2012 - 2017

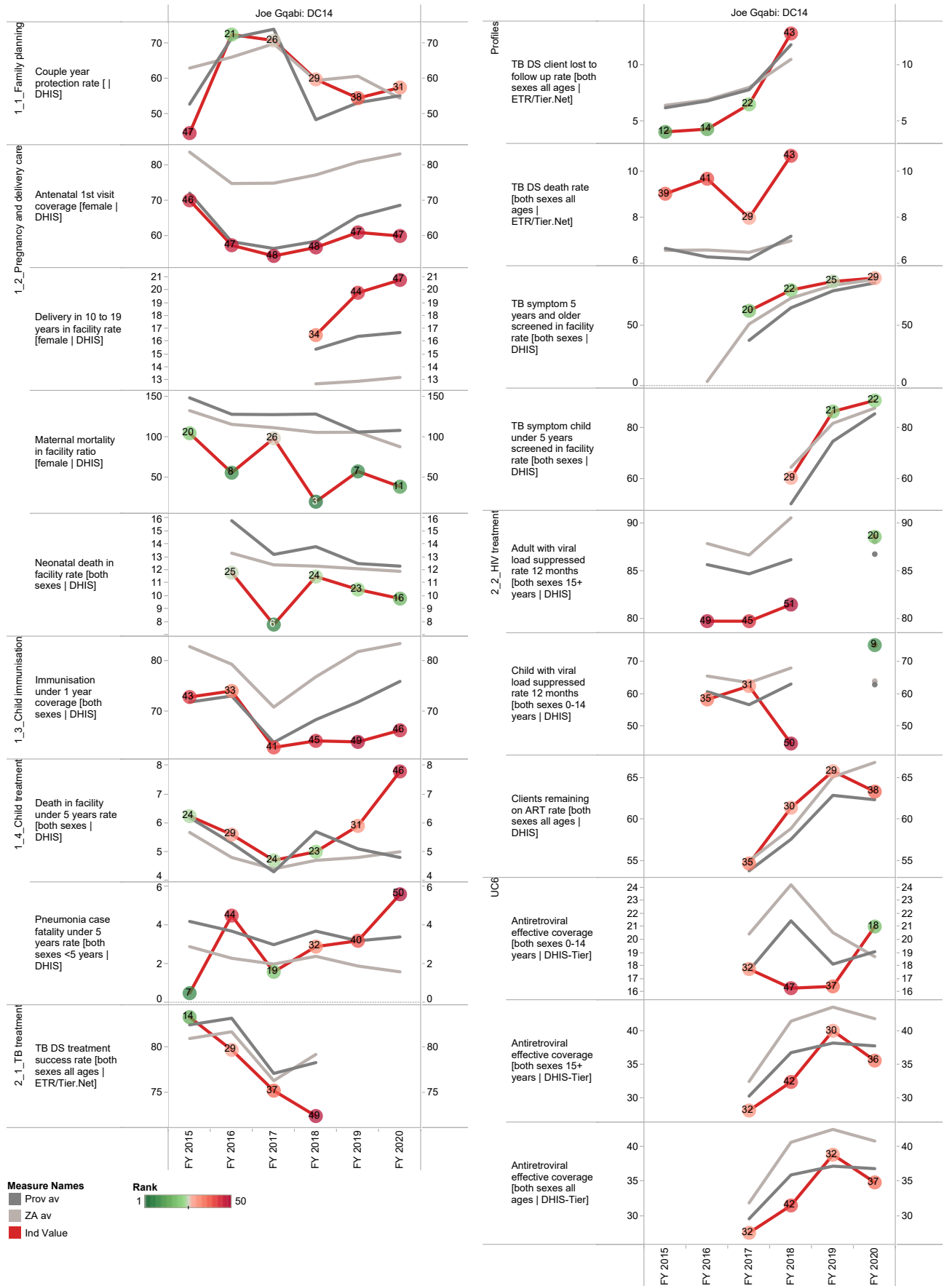
Percentage of deaths by broad causes and single leading causes



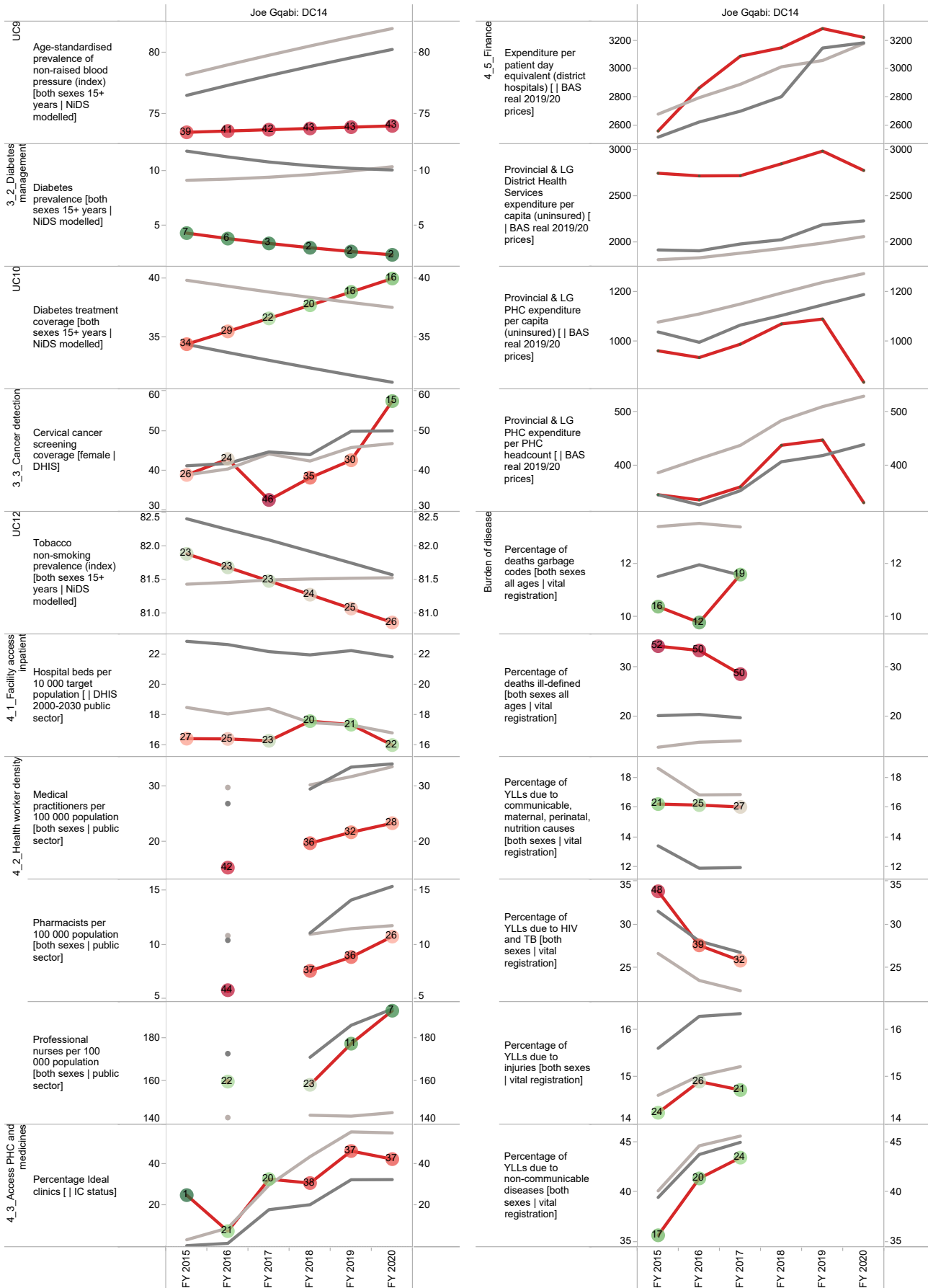
Percentages are shown according to all the deaths within the age/gender category of each box, although only the leading 10 causes are displayed.



Annual trends, 2015/16–2019/20



Section B: Profile Eastern Cape Province



OR Tambo District Municipality (DC15)

The OR Tambo District Municipality^k is a Category C municipality located to the east of the Eastern Cape Province. It covers about 80% of what used to be marginalised homeland in the Transkei. The district is formed by five local municipalities: King Sabata Dalindyebo, Nyandeni, Mhlontlo, Port St Johns and Ingquza Hill.

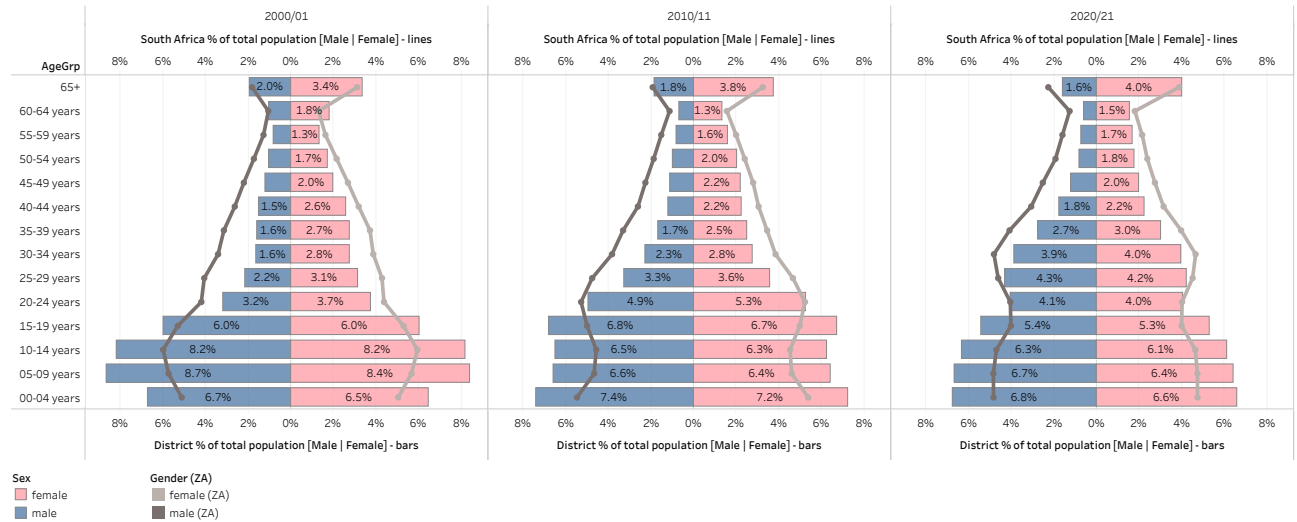
Cities/Towns: Flagstaff, Libode, Lusikisiki, Mqanduli, Mthatha (previously Umtata), Ngqeleni, Port St Johns, Qumbu, Tsolo

Area: 12 141km²

Population (2019)^l: 1 511 733

District percentage population by age-gender group compared to South Africa

EC, OR Tambo DM (DC15)



Burden of disease profile

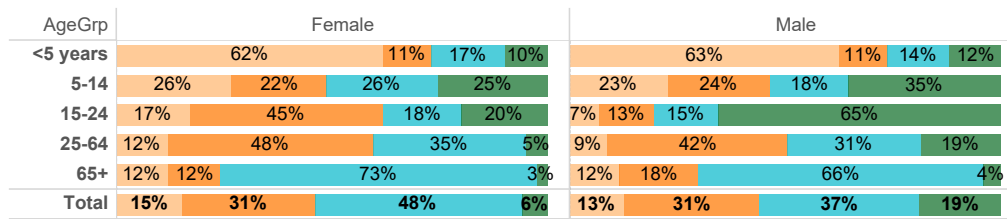
For the percentage of deaths by broad cause, deaths are classified into four groups, namely: (i) injuries; (ii) non-communicable diseases; (iii) HIV and TB; and (iv) communicable diseases together with maternal, perinatal and nutritional conditions. Data are given by gender and age group for the period 2012–2017. The second part of the graph shows the 10 leading single causes of death within each age group and by gender for 2012–2017.

^k Available from: <https://municipalities.co.za/overview/106/or-tambo-district-municipality>.

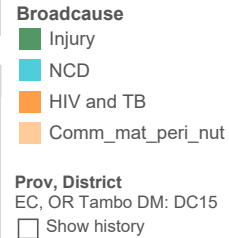
^l Mid-year Population Estimates 2019, Stats SA.

Percentage of deaths by broad cause and leading causes, 2012–2017

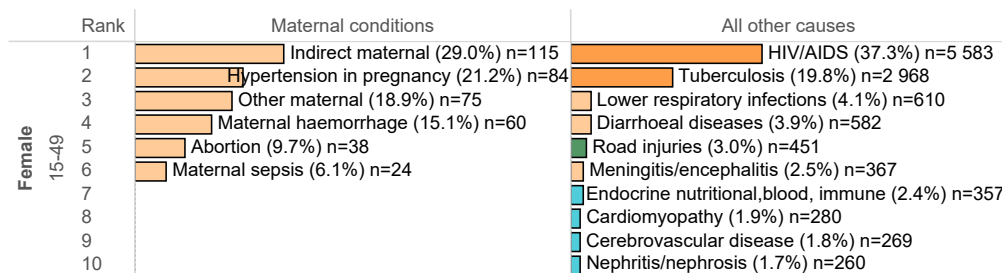
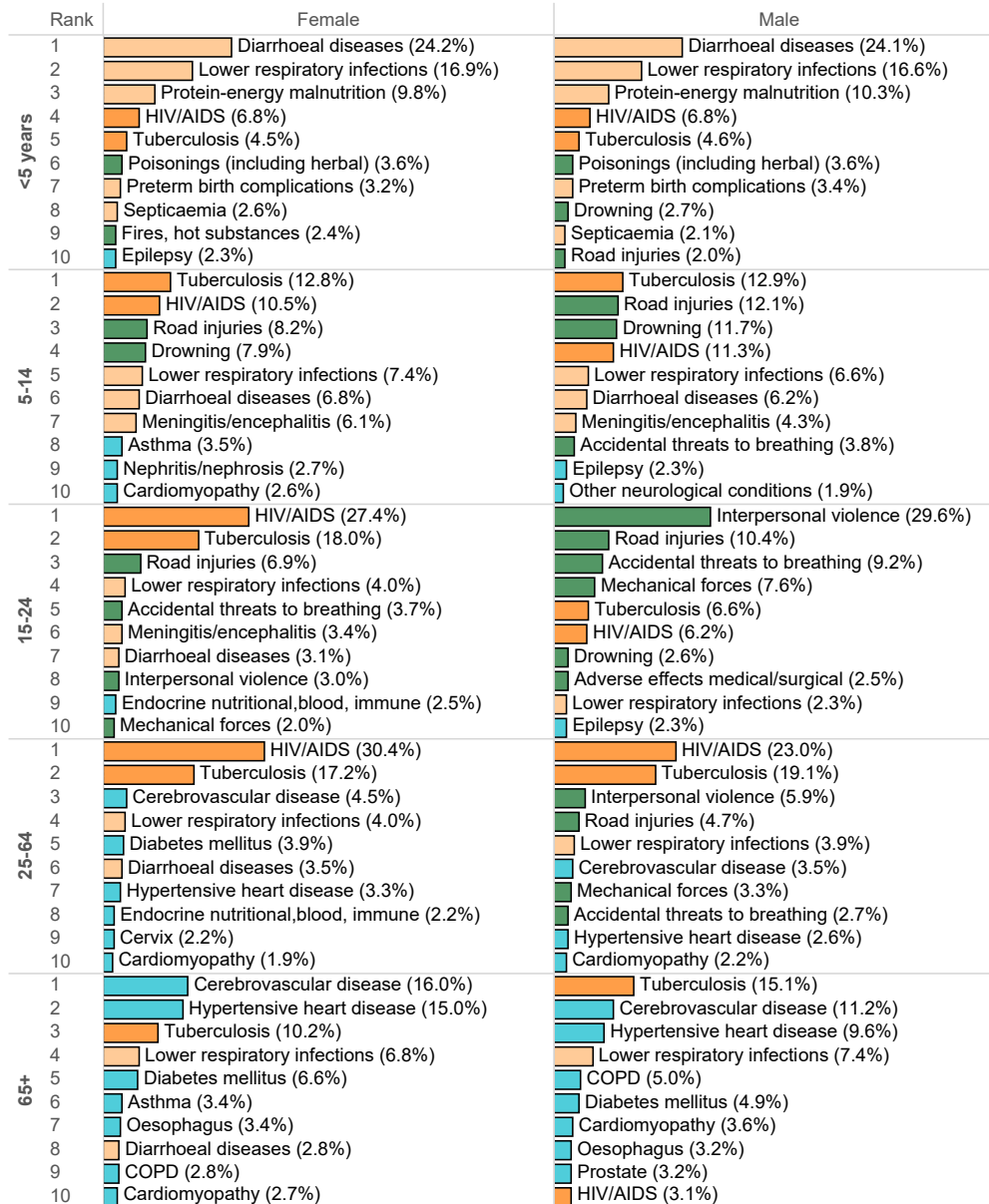
EC, OR Tambo DM: DC15, 2012 - 2017



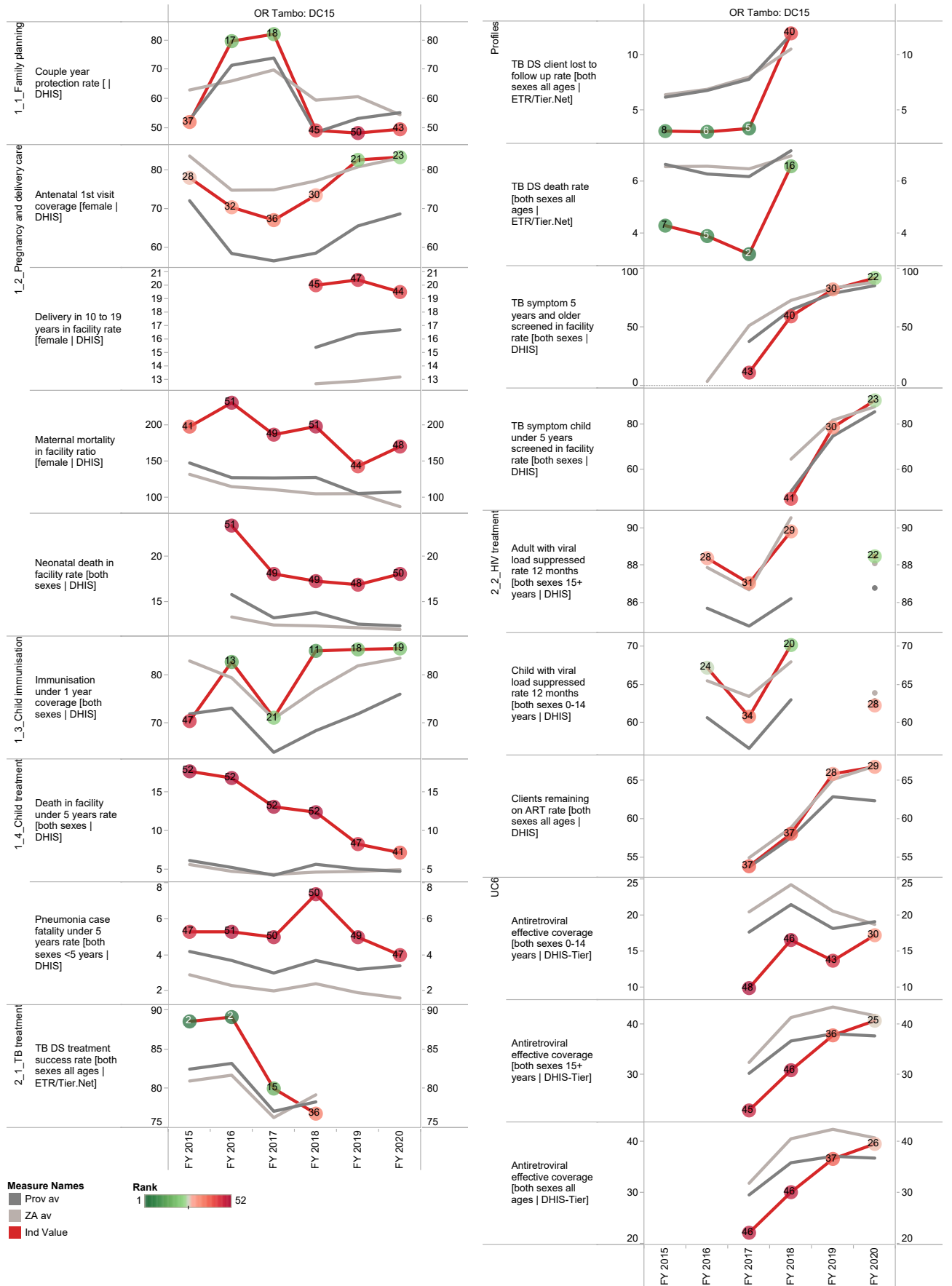
Percentage of deaths by broad causes and single leading causes



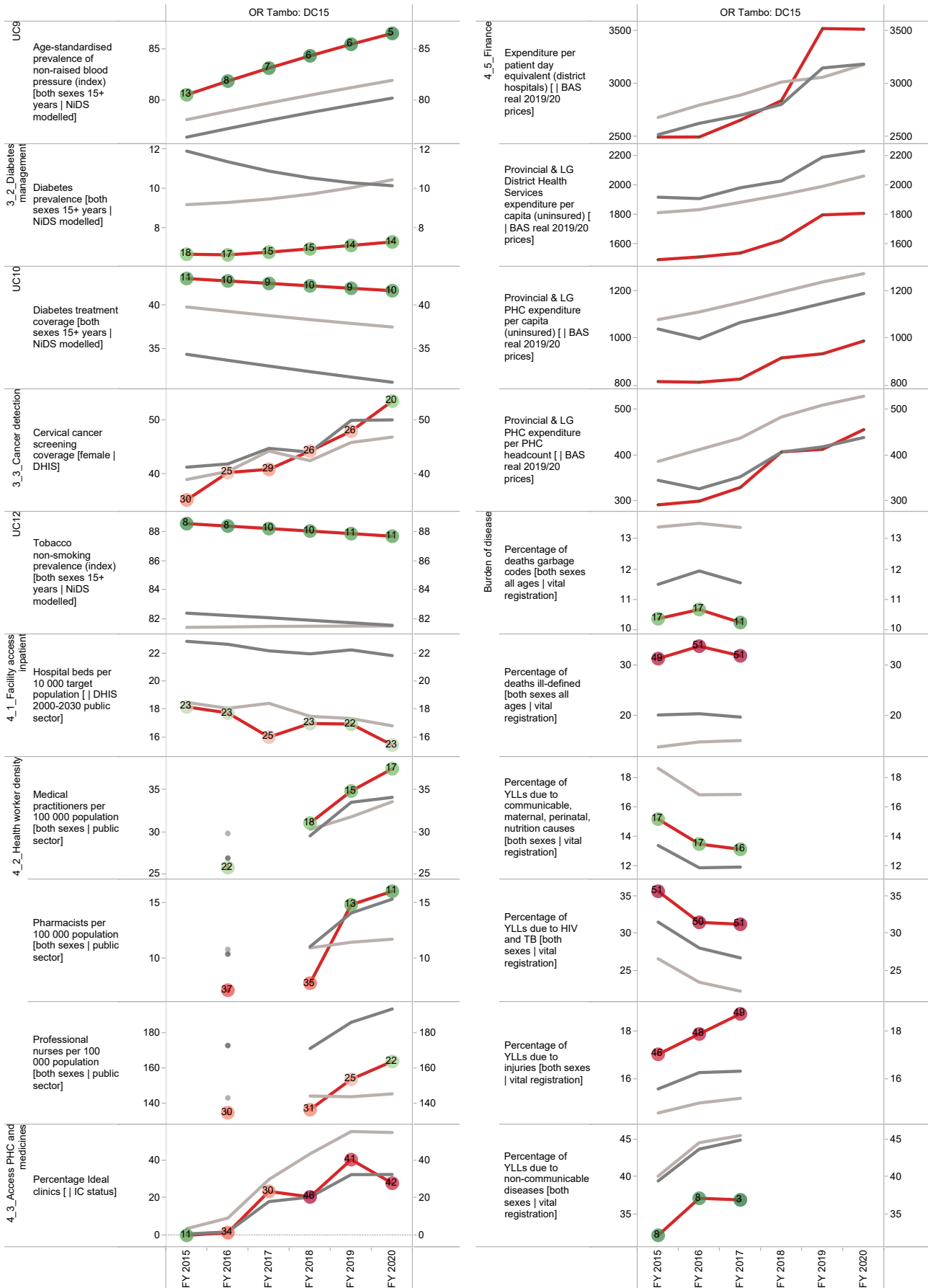
Percentages are shown according to all the deaths within the age/gender category of each box, although only the leading 10 causes are displayed.



Annual trends, 2015/16–2019/20



Section B: Profile Eastern Cape Province



Alfred Nzo District Municipality (DC44)

The Alfred Nzo District Municipality^m is a Category C municipality located in the north-eastern corner of the Eastern Cape Province. Alfred Nzo is the smallest district in the province, covering only 6% of the geographical area. The district comprises the Matatiele, Ntabankulu, Mbizana and Umzimvubu Local Municipalities.

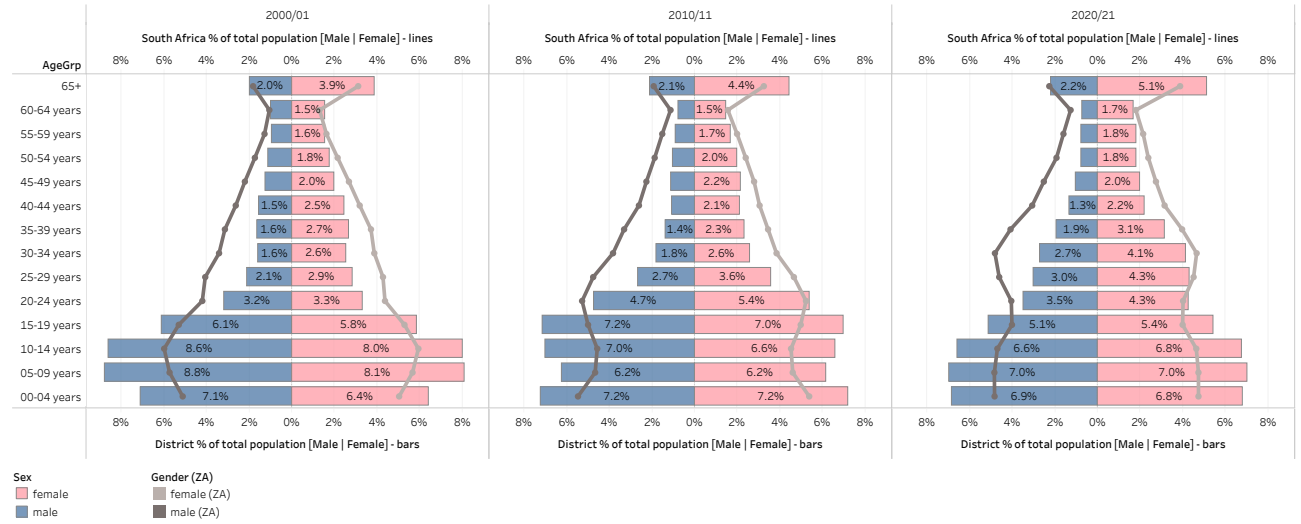
Cities/Towns: Bizana, Cedarville, KwaBhaca (Mount Frere), Matatiele, Tabankulu, eMaxesibeni (Mount Ayliff)

Area: 10 731km²

Population (2019)ⁿ: 879 284

District percentage population by age-gender group compared to South Africa

EC, A Nzo DM (DC44)



Burden of disease profile

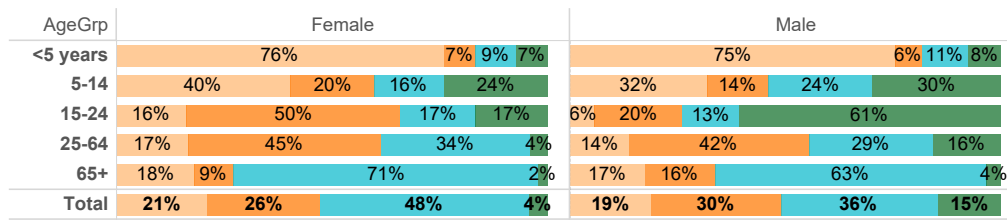
For the percentage of deaths by broad cause, deaths are classified into four groups, namely: (i) injuries; (ii) non-communicable diseases; (iii) HIV and TB; and (iv) communicable diseases together with maternal, perinatal and nutritional conditions. Data are given by gender and age group for the period 2012–2017. The second part of the graph shows the 10 leading single causes of death within each age group and by gender for 2012–2017.

^m Available from: <https://municipalities.co.za/overview/101/alfred-nzo-district-municipality>.

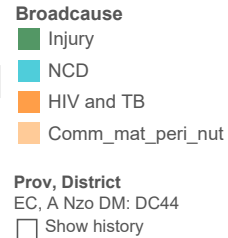
ⁿ Mid-year Population Estimates 2019, Stats SA.

Percentage of deaths by broad cause and leading causes, 2012–2017

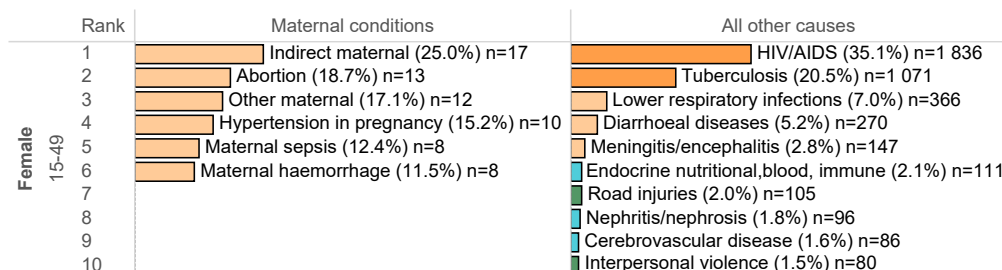
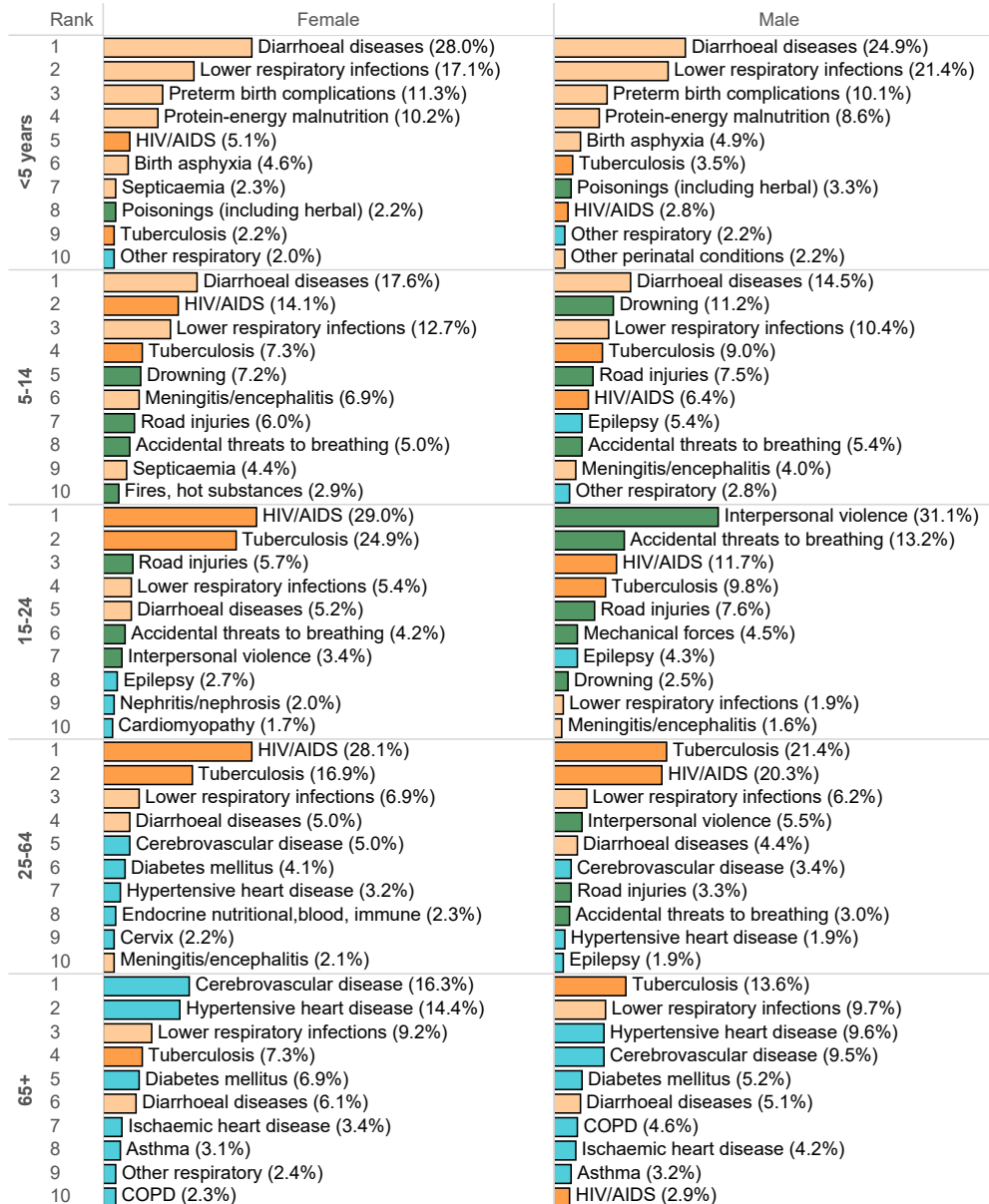
EC, A Nzo DM: DC44, 2012 - 2017



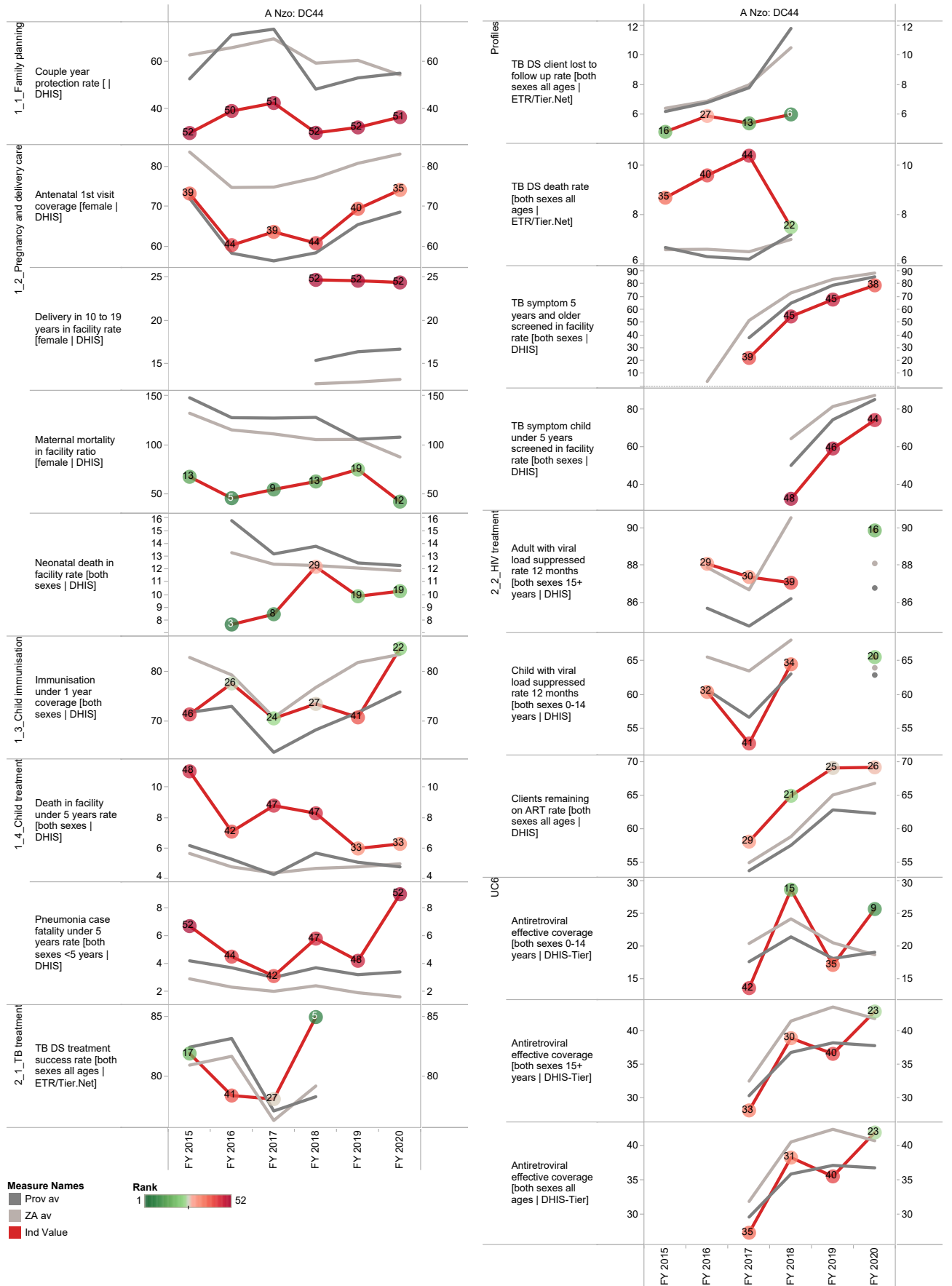
Percentage of deaths by broad causes and single leading causes



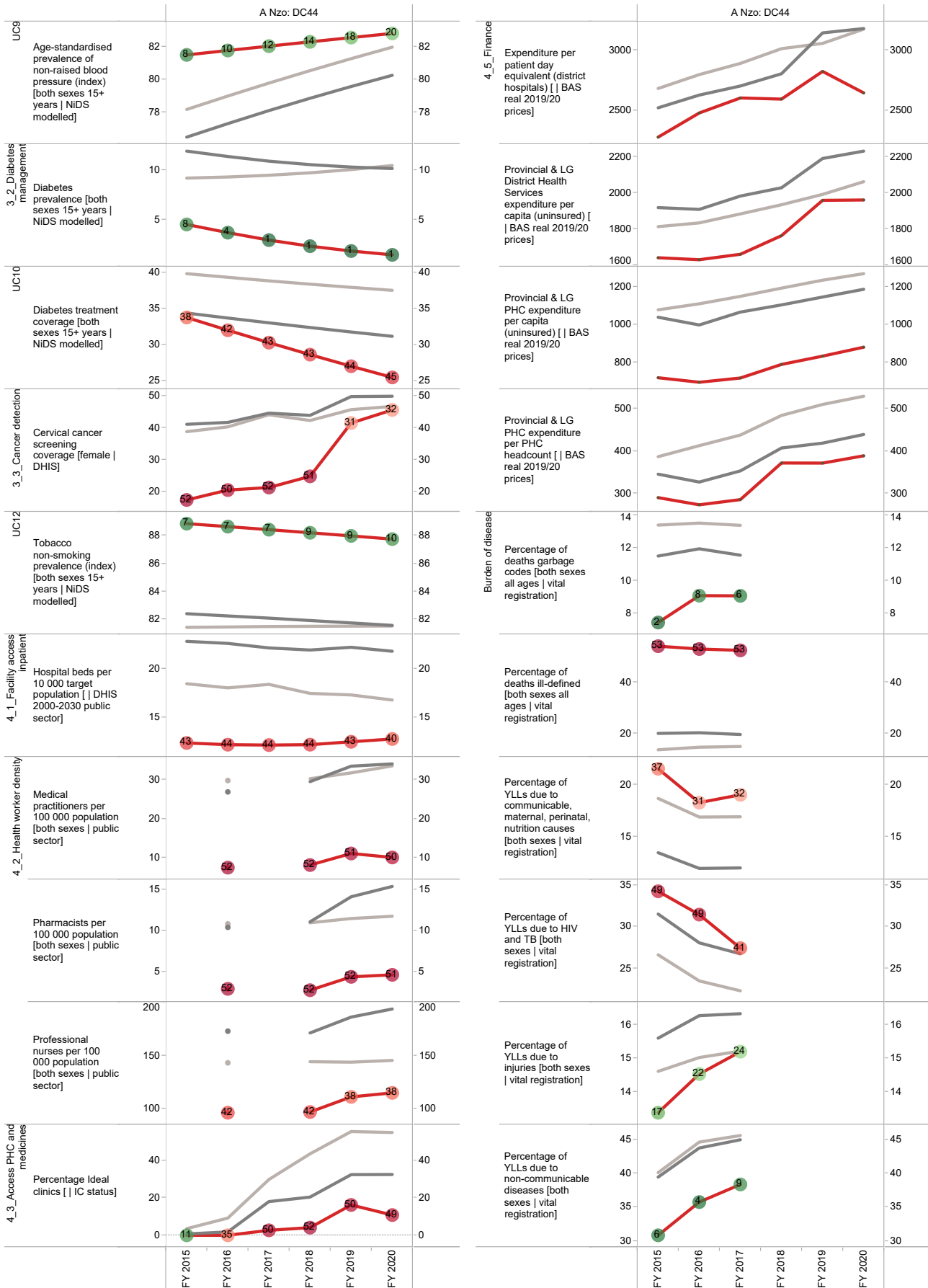
Percentages are shown according to all the deaths within the age/gender category of each box, although only the leading 10 causes are displayed.



Annual trends, 2015/16–2019/20



Section B: Profile Eastern Cape Province



Nelson Mandela Bay Metropolitan (NMA)

The Nelson Mandela Bay Metropolitan Municipality^o is a Category A municipality. As a major seaport and automotive manufacturing centre located on the south-eastern coast of Africa, it is the economic powerhouse of the Eastern Cape. The Metropolitan Municipality comprises three health sub-districts, namely: Nelson Mandela A, Nelson Mandela B and Nelson Mandela C.

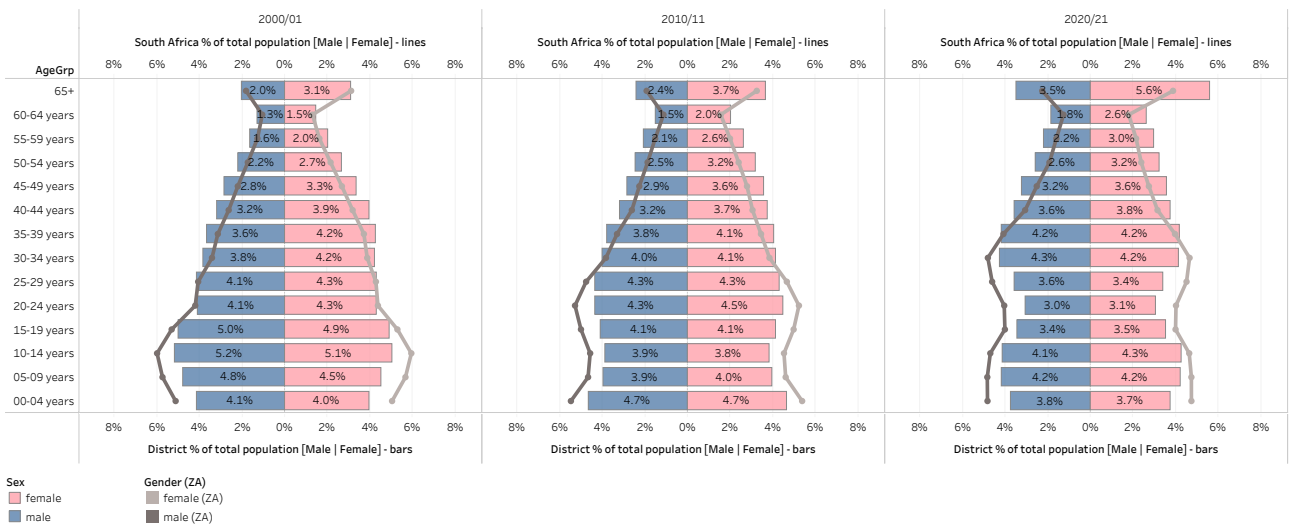
Cities/Towns: Bethelsdorp, Bloemendal, Blue Horizon Bay, Clarendon Marine, Despatch, KwaNobuhle, Motherwell, Port Elizabeth, Summerstrand, Swartkops, Uitenhage

Area: 1 957km²

Population (2019)^p: 1 320 576

District percentage population by age-gender group compared to South Africa

EC, N Mandela Bay MM (NMA)



Burden of disease profile

For the percentage of deaths by broad cause, deaths are classified into four groups, namely: (i) injuries; (ii) non-communicable diseases; (iii) HIV and TB; and (iv) communicable diseases together with maternal, perinatal and nutritional conditions. Data are given by gender and age group for the period 2012–2017. The second part of the graph shows the 10 leading single causes of death within each age group and by gender for 2012–2017.

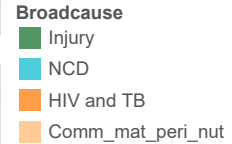
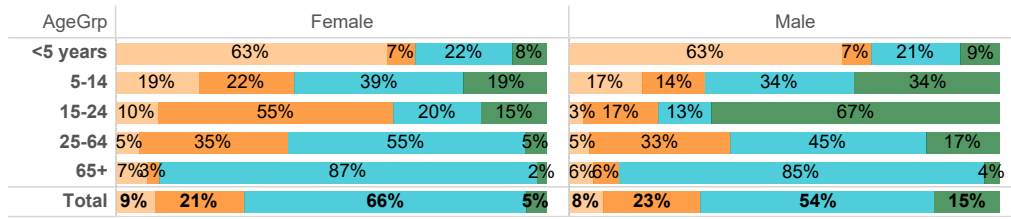
^o Available from: <https://municipalities.co.za/overview/1/nelson-mandela-bay-metropolitan-municipality>.

^p Mid-year Population Estimates 2019, Stats SA.

Percentage of deaths by broad cause and leading causes, 2012–2017

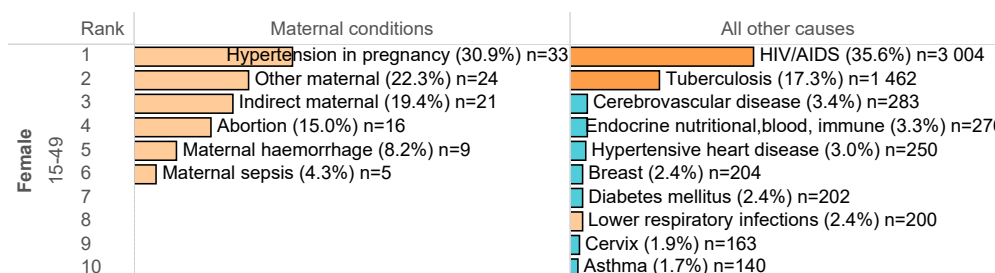
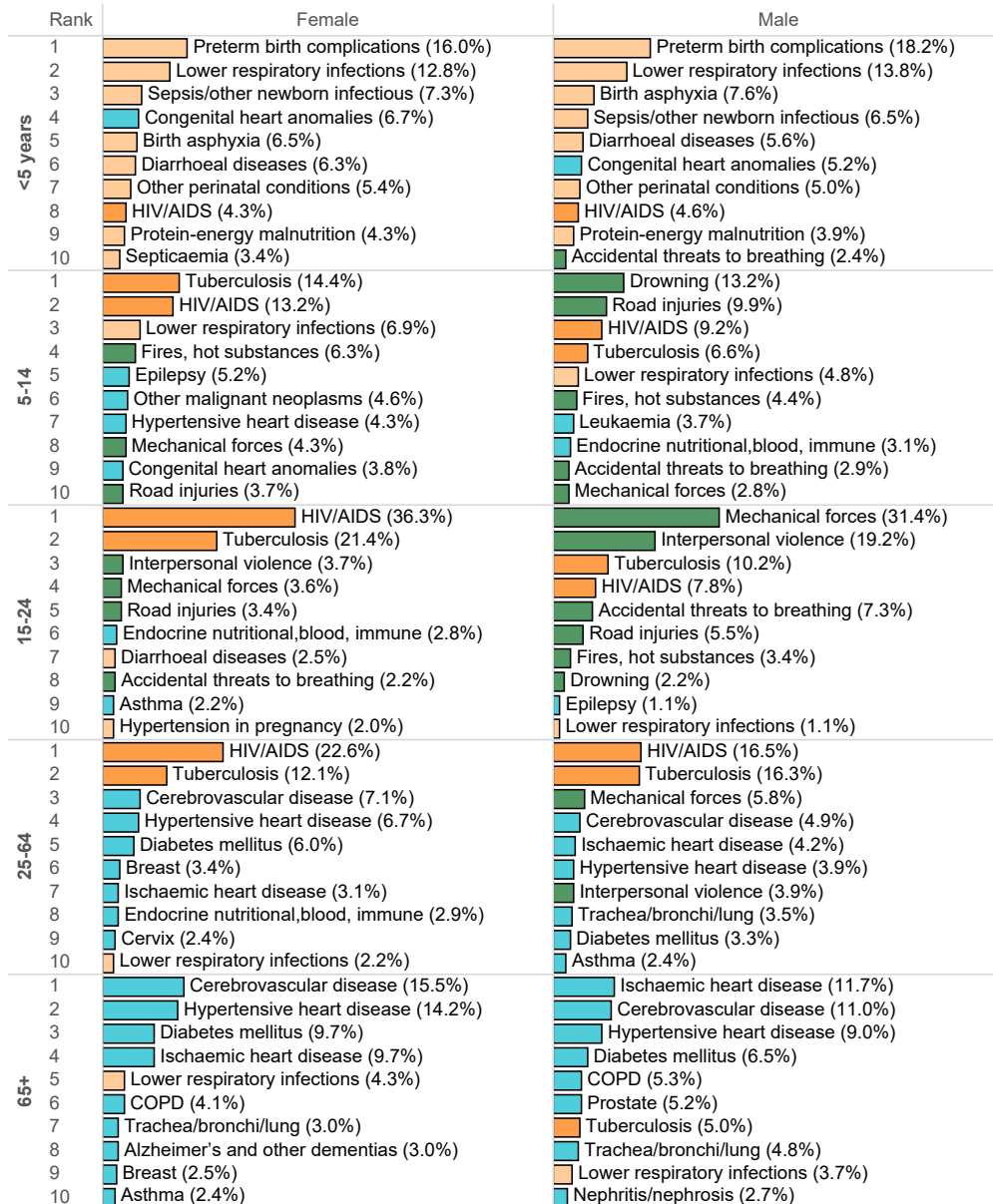
EC, N Mandela Bay MM: NMA, 2012 - 2017

Percentage of deaths by broad causes and single leading causes

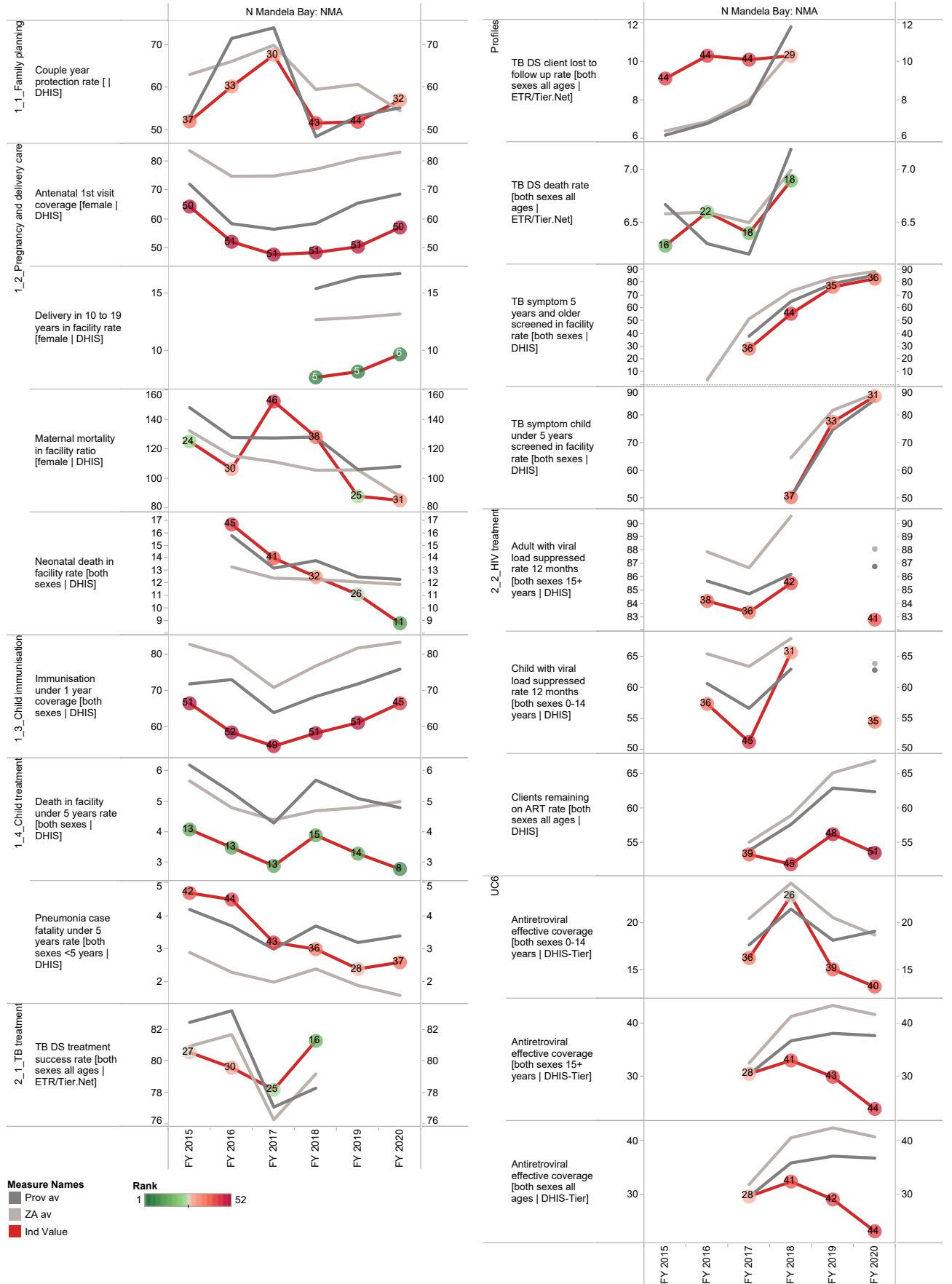


Prov, District
EC, N Mandela Bay MM: NMA
 Show history

Percentages are shown according to all the deaths within the age/gender category of each box, although only the leading 10 causes are displayed.



Annual trends, 2015/16–2019/20



Section B: Profile Eastern Cape Province

