

17 North West Province

Bojanala District Municipality (DC37)

The Bojanala Platinum District Municipality^a is a Category C municipality situated in the North West Province. It comprises five local municipalities: Kgetlengrivier, Madibeng, Moses Kotane, Moretele and Rustenburg.

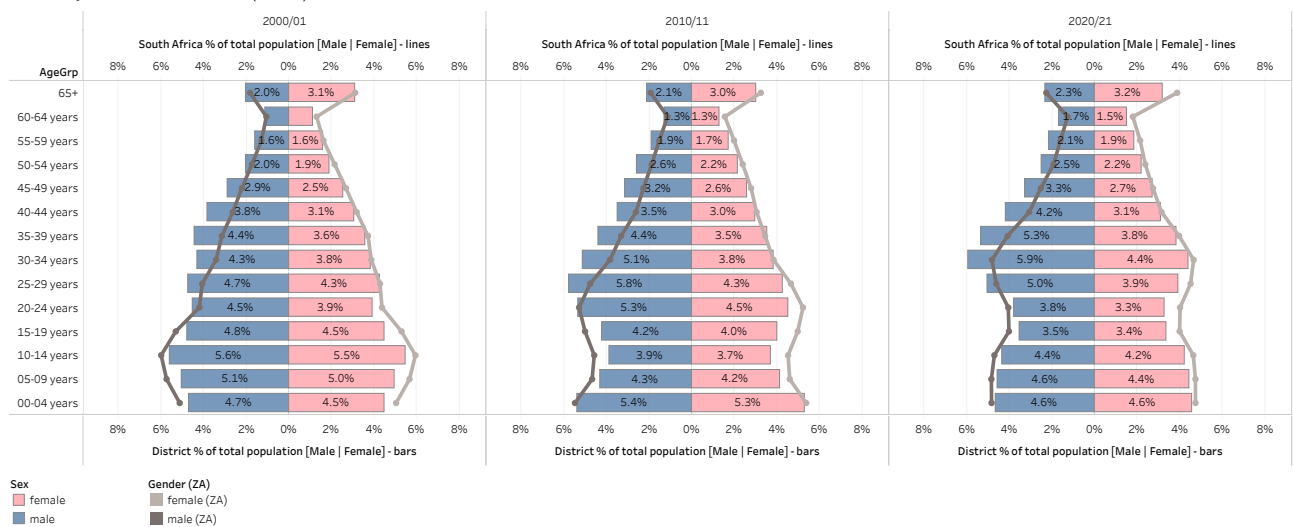
Cities/Towns: Brits, Derby, Hartbeesfontein-A, Hartbeespoort, Koster, Madikwe, Marikana, Mooinooi, Phatsima, Rustenburg, Swartruggens, Tlhabane

Area: 18 333km²

Population (2019)^b: 1 753 848

District percentage population by age-gender group compared to South Africa

NW, Bojanala Platinum DM (DC37)



Burden of disease profile

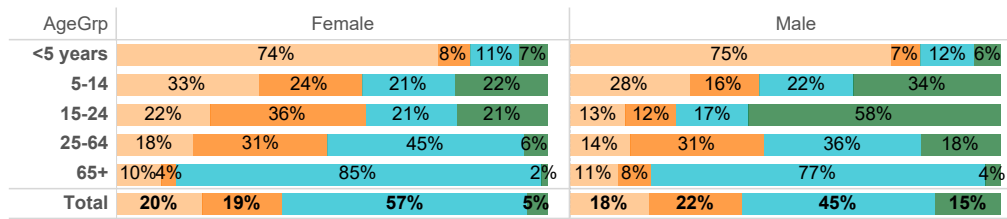
For the percentage of deaths by broad cause, deaths are classified into four groups, namely: (i) injuries; (ii) non-communicable diseases; (iii) HIV and TB; and (iv) communicable diseases together with maternal, perinatal and nutritional conditions. Data are given by gender and age group for the period 2012–2017. The second part of the graph shows the 10 leading single causes of death within each age group and by gender for 2012–2017.

a Available from: <https://municipalities.co.za/overview/139/bojanala-platinum-district-municipality>.

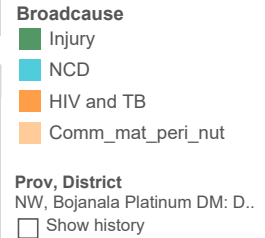
b Mid-year Population Estimates 2019, Stats SA.

Percentage of deaths by broad cause and leading causes, 2012–2017

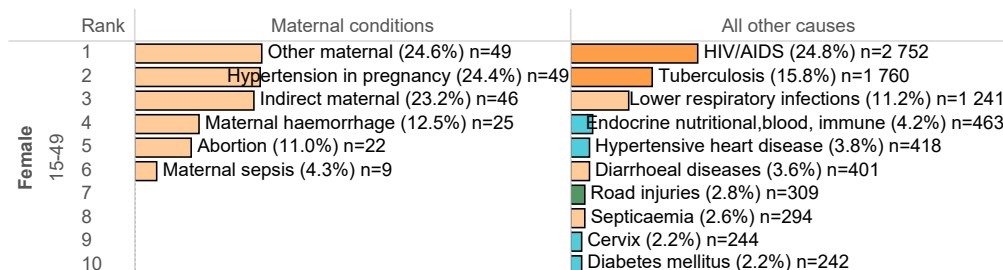
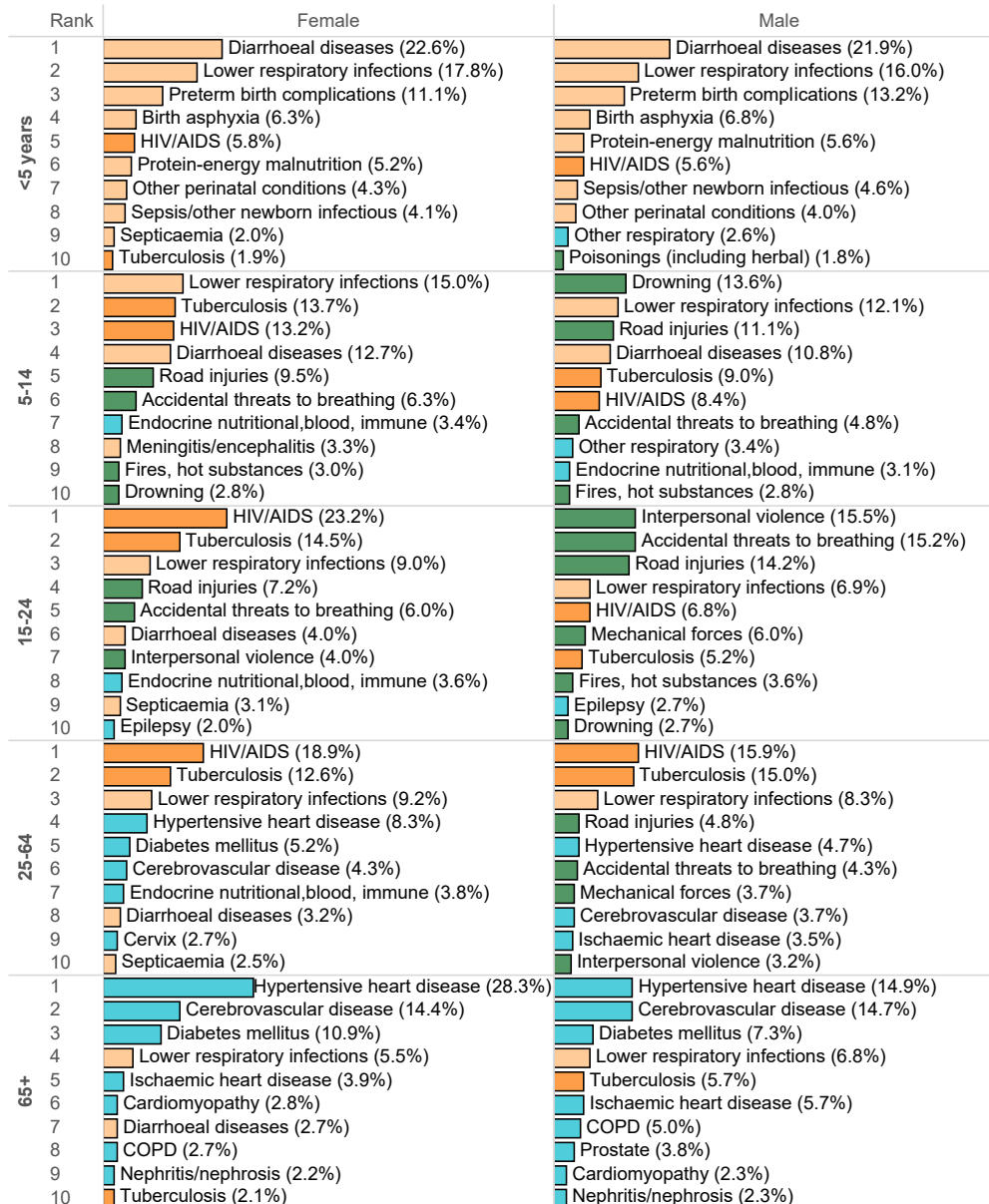
NW, Bojanala Platinum DM: DC37, 2012 - 2017



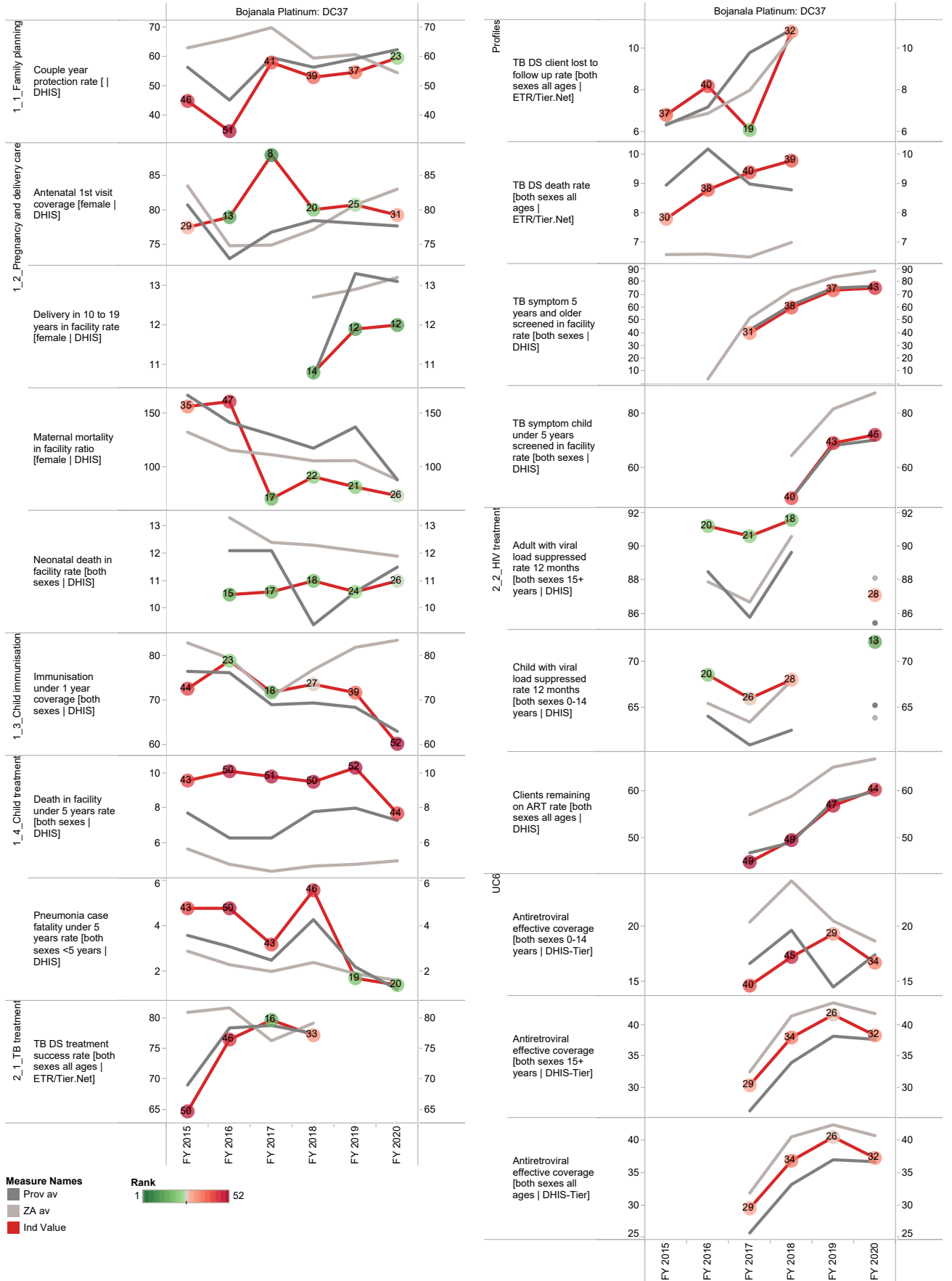
Percentage of deaths by broad causes and single leading causes



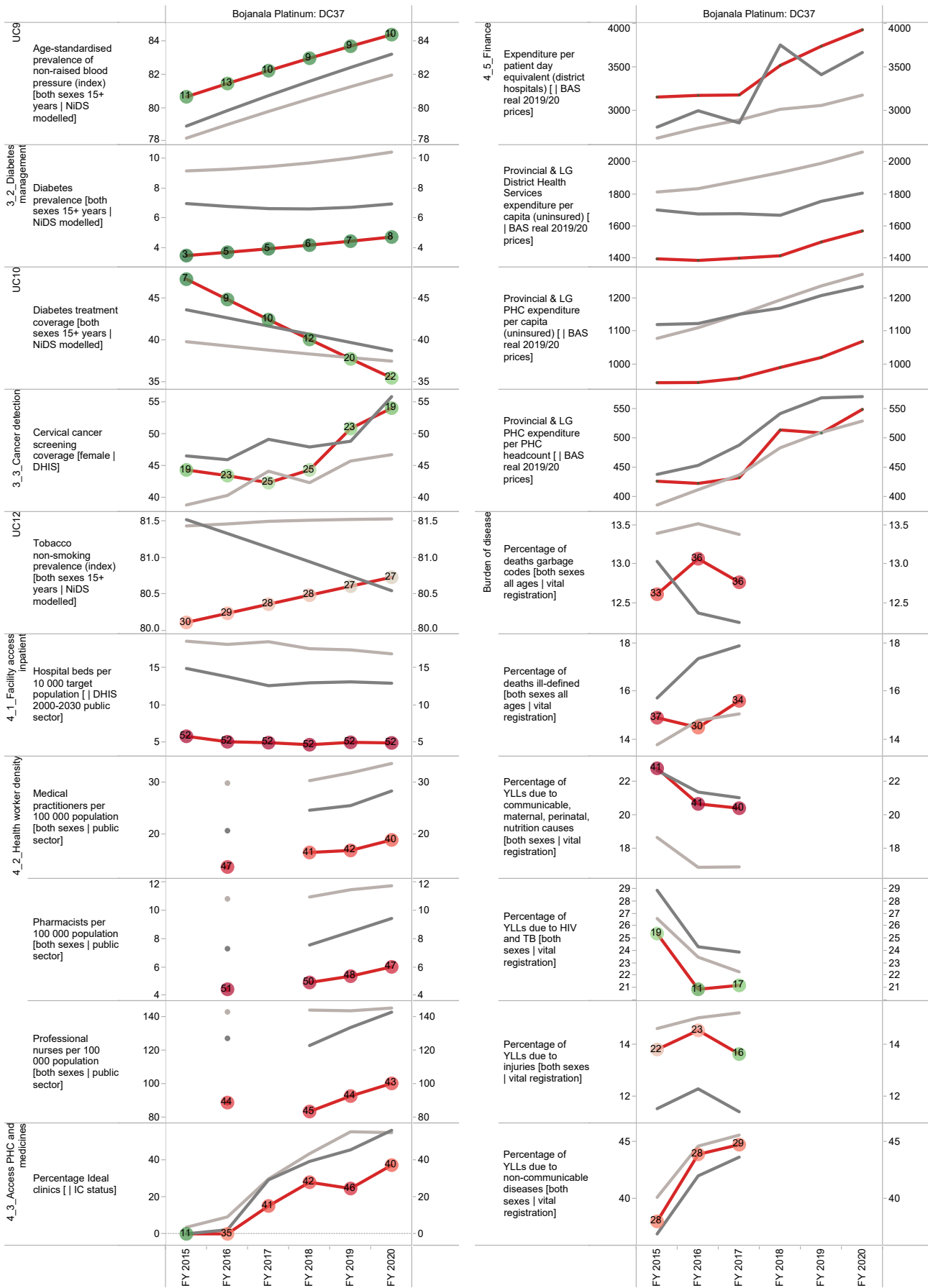
Percentages are shown according to all the deaths within the age/gender category of each box, although only the leading 10 causes are displayed.



Annual trends, 2015/16–2019/20



Section B: Profile North West Province



Ngaka Modiri Molema District Municipality (DC38)

The Ngaka Modiri Molema District Municipality^c is a Category C municipality in the North West Province and borders Botswana. It consists of five local municipalities: Mahikeng, Ratlou, Ramotshere Moiloa, Ditsobotla and Tswaing.

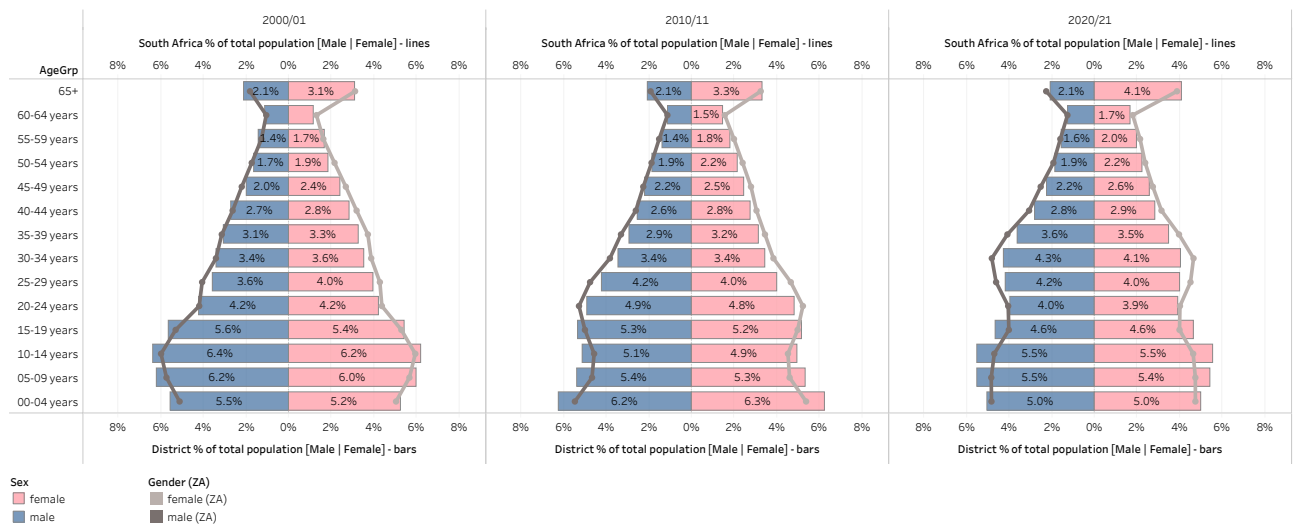
Cities/Towns: Biesiesvlei, Coligny, Delareyville, Disaneng, Groot Marico, Kraaipan, Lichtenburg, Madibogo, Mahikeng, Mmabatho, Ottosdal, Ottoshoop, Sannieshof, Setlagole, Zeerust

Area: 28 114km²

Population (2019)^d: 968 781

District percentage population by age-gender group compared to South Africa

NW, NM Molema DM (DC38)



Burden of disease profile

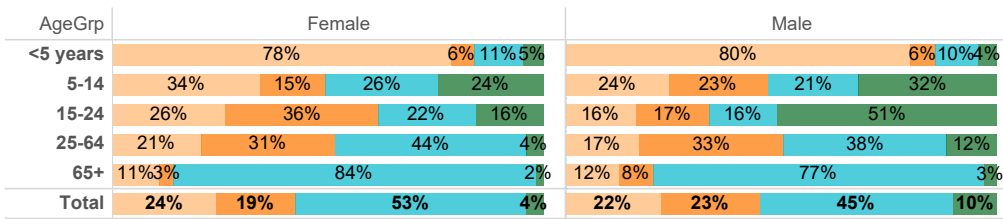
For the percentage of deaths by broad cause, deaths are classified into four groups, namely: (i) injuries; (ii) non-communicable diseases; (iii) HIV and TB; and (iv) communicable diseases together with maternal, perinatal and nutritional conditions. Data are given by gender and age group for the period 2012–2017. The second part of the graph shows the 10 leading single causes of death within each age group and by gender for 2012–2017.

^c Available from: <https://municipalities.co.za/overview/142/ngaka-modiri-molema-district-municipality>.

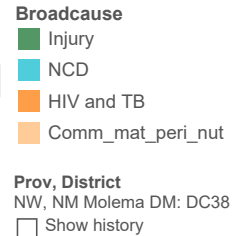
^d Mid-year Population Estimates 2019, Stats SA.

Percentage of deaths by broad cause and leading causes, 2012–2017

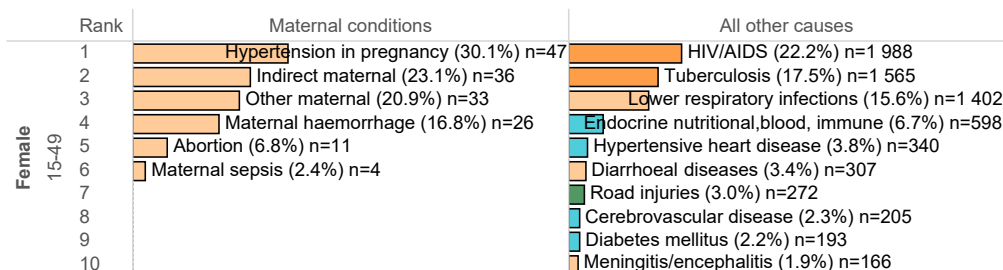
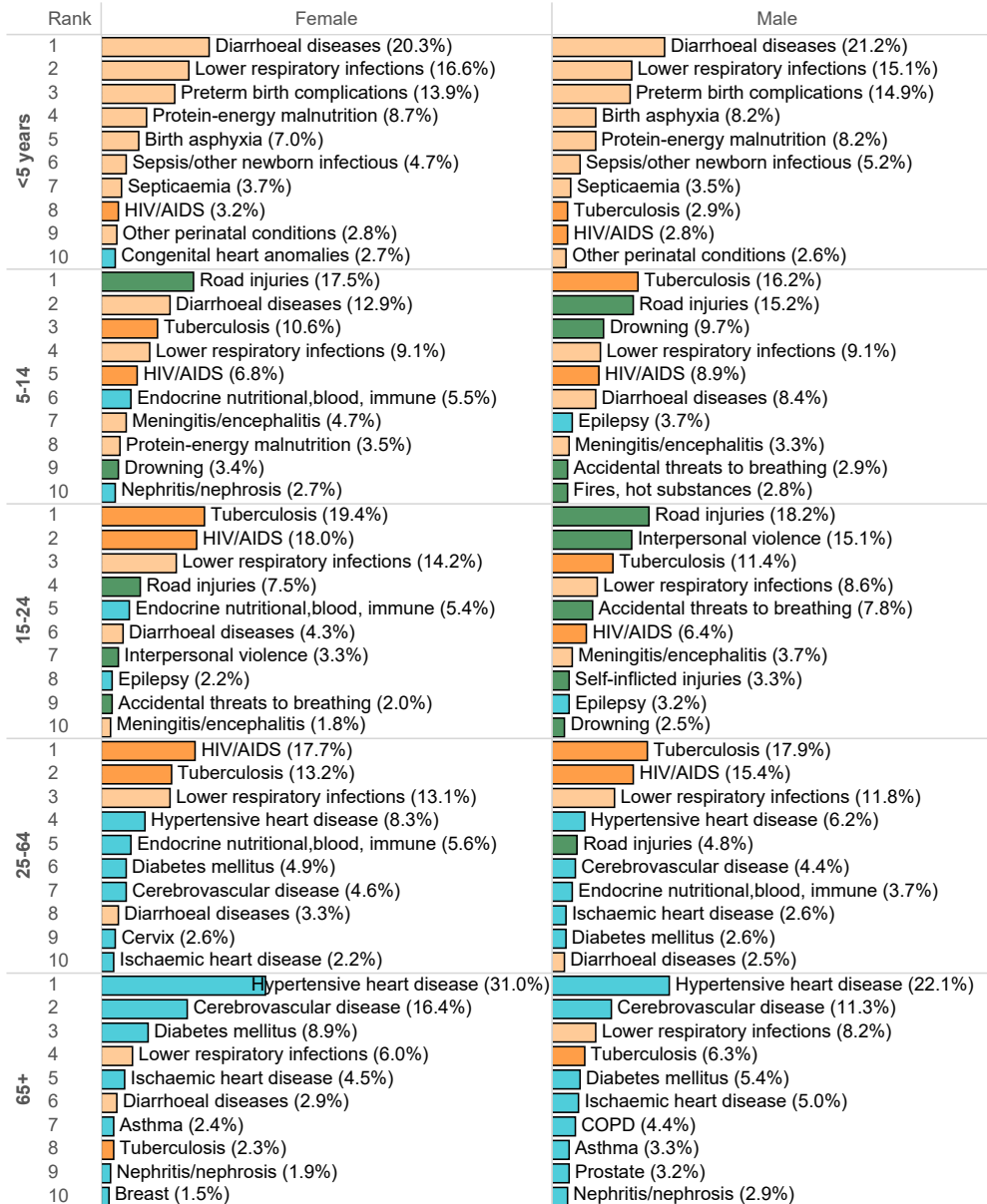
NW, NM Molema DM: DC38, 2012 - 2017



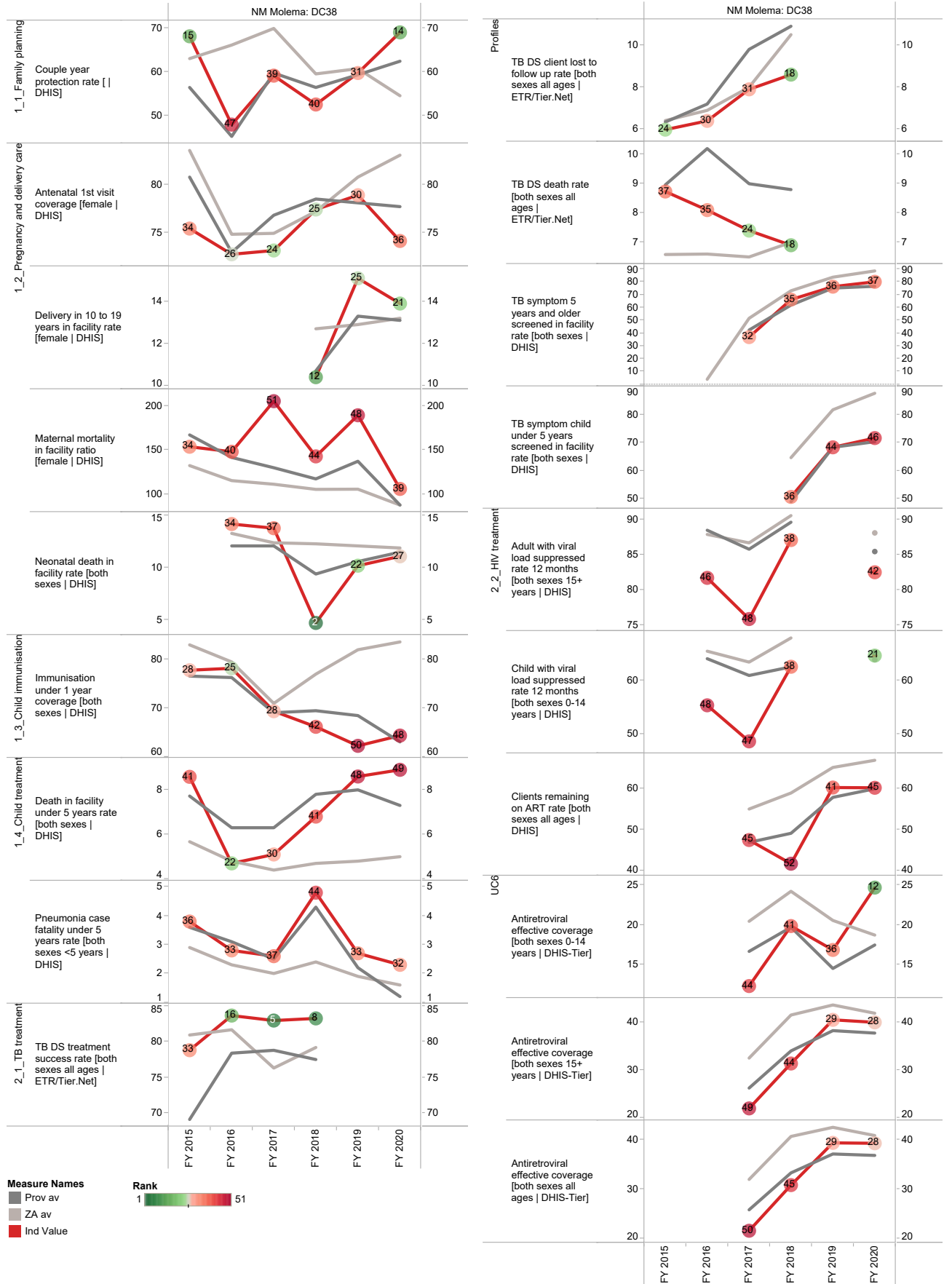
Percentage of deaths by broad causes and single leading causes



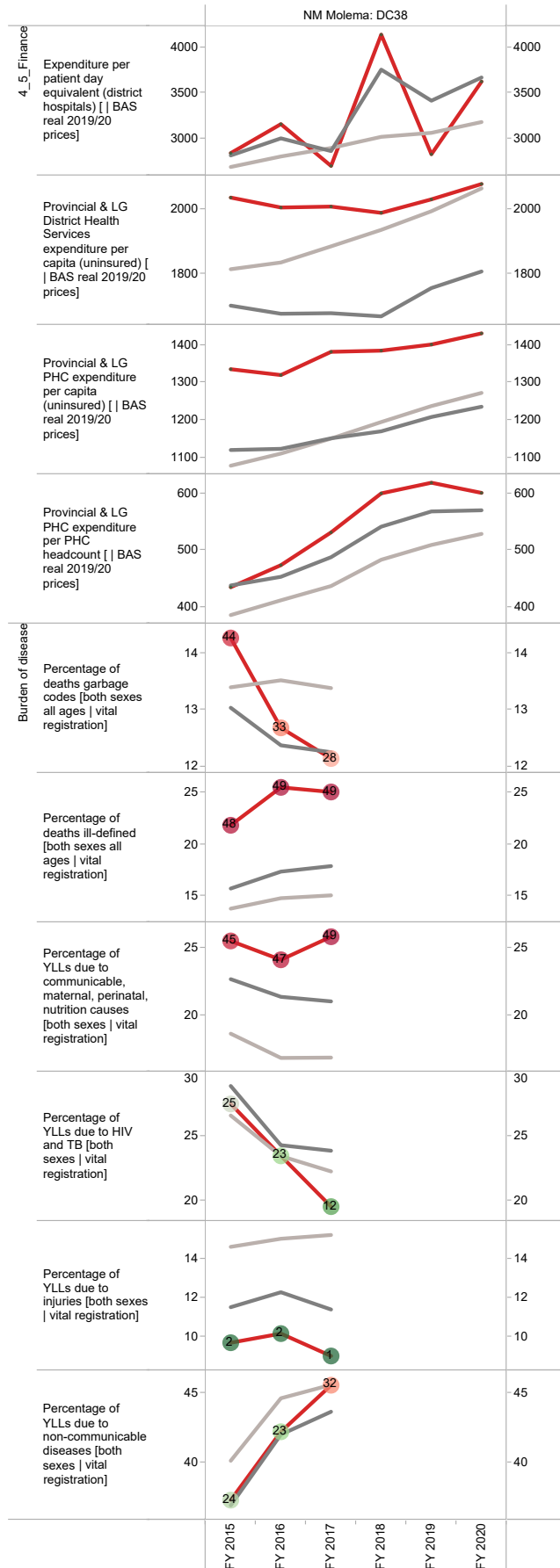
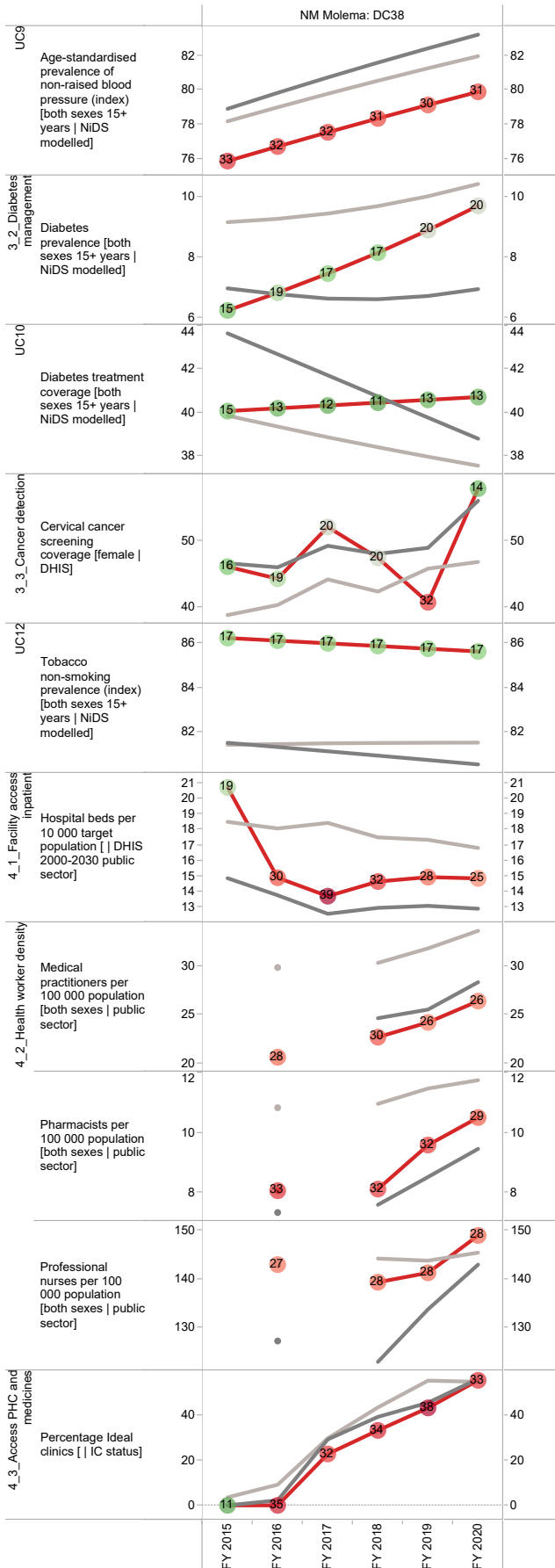
Percentages are shown according to all the deaths within the age/gender category of each box, although only the leading 10 causes are displayed.



Annual trends, 2015/16–2019/20



Section B: Profile North West Province



Ruth Segomotsi Mompoti District Municipality (DC39)

The Dr Ruth Segomotsi Mompoti District Municipality^e is a Category C municipality located in the North West Province. It is the largest district in the province, making up almost half of its geographical area. The district comprises five local municipalities: Naledi, Greater Taung, Kagisano-Molopo, Mamusa and Lekwa-Teemane.

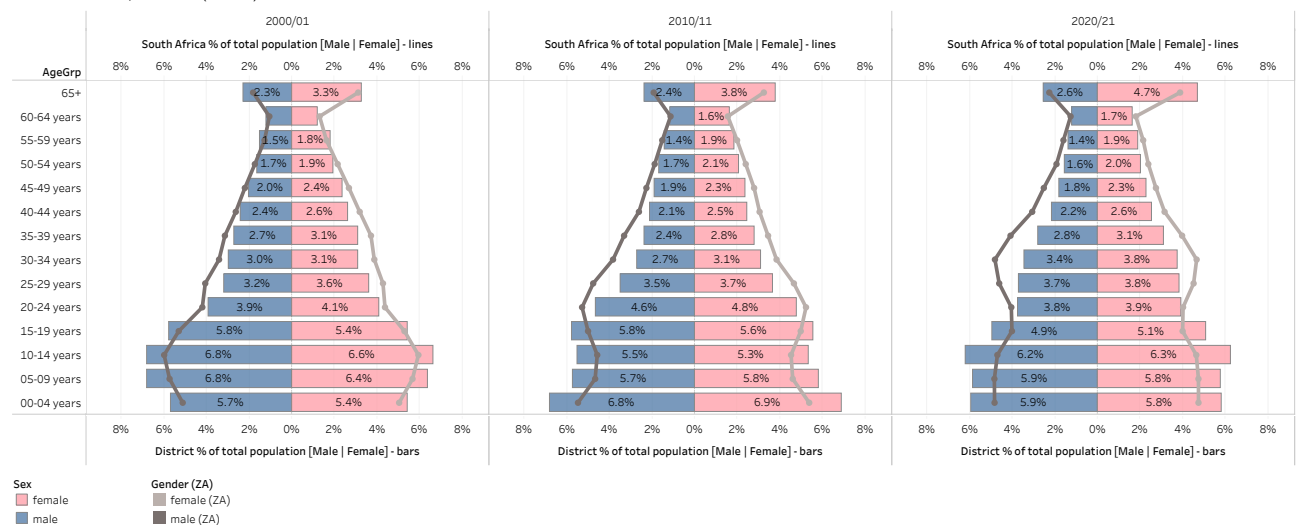
Cities/Towns: Amalia, Bloemhof, Christiana, Piet Plessis, Pomfret, Pudimoe, Reivilo, Schweizer-Reneke, Stella, Taung, Vryburg

Area: 43 764km²

Population (2019)^f: 480 942

District percentage population by age-gender group compared to South Africa

NW, RS Mompoti DM (DC39)



Burden of disease profile

For the percentage of deaths by broad cause, deaths are classified into four groups, namely: (i) injuries; (ii) non-communicable diseases; (iii) HIV and TB; and (iv) communicable diseases together with maternal, perinatal and nutritional conditions. Data are given by gender and age group for the period 2012–2017. The second part of the graph shows the 10 leading single causes of death within each age group and by gender for 2012–2017.

^e Available from: <https://municipalities.co.za/overview/141/dr-ruth-segomotsi-mompoti-district-municipality>.

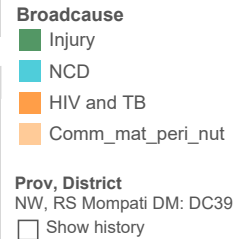
^f Mid-year Population Estimates 2019, Stats SA.

Percentage of deaths by broad cause and leading causes, 2012–2017

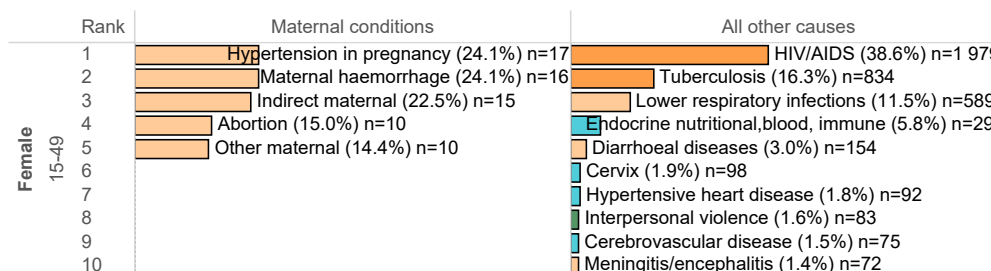
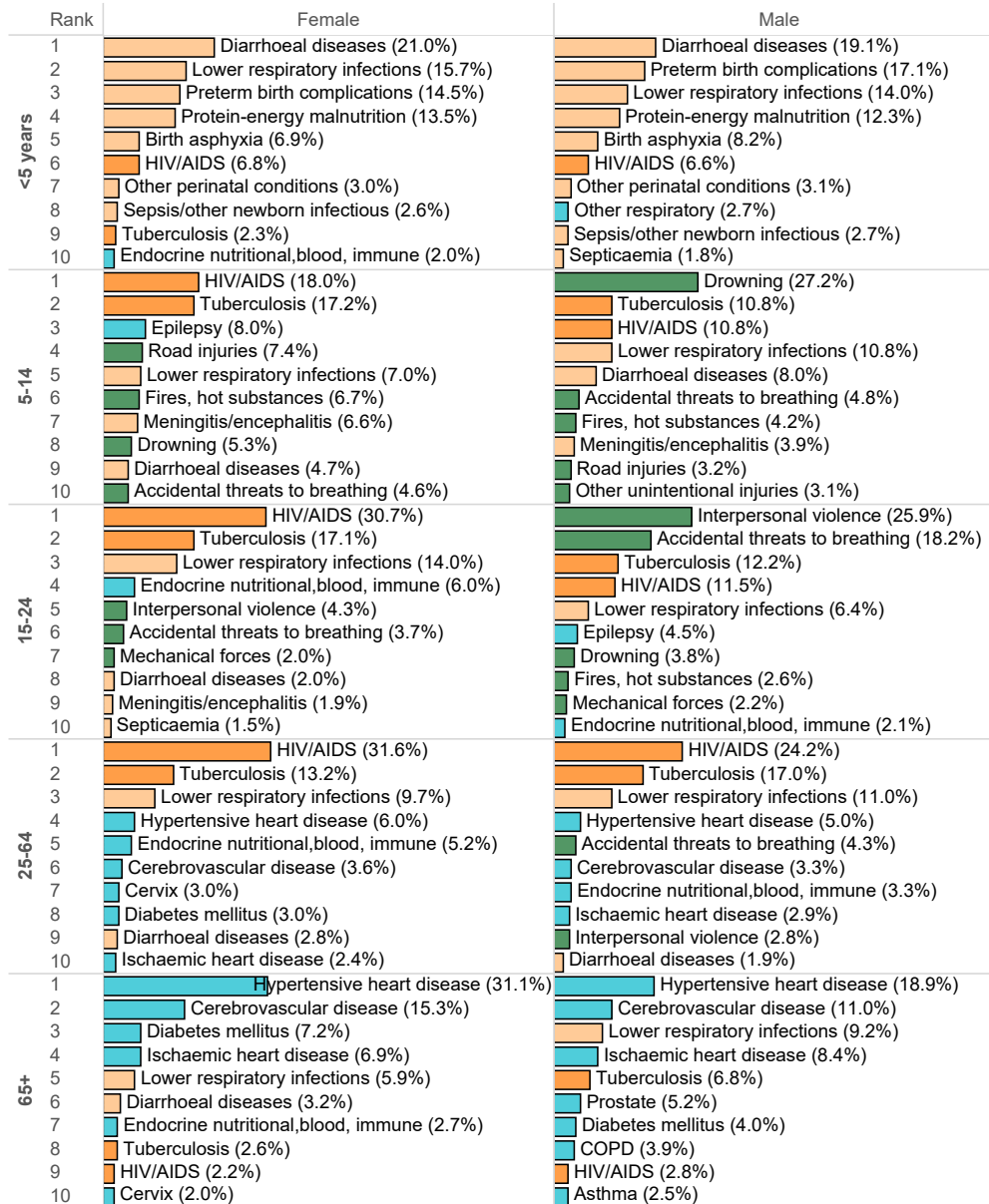
NW, RS Mompoti DM: DC39, 2012 - 2017

AgeGrp	Female				Male			
<5 years	79%	9%	8%	4%	79%	8%	9%	4%
5-14	21%	29%	25%	25%	25%	18%	16%	41%
15-24	22%	46%	18%	15%	11%	22%	14%	53%
25-64	16%	45%	36%	4%	15%	41%	32%	12%
65+	11%	5%	83%	1%	14%	10%	74%	3%
Total	22%	26%	49%	3%	22%	27%	40%	10%

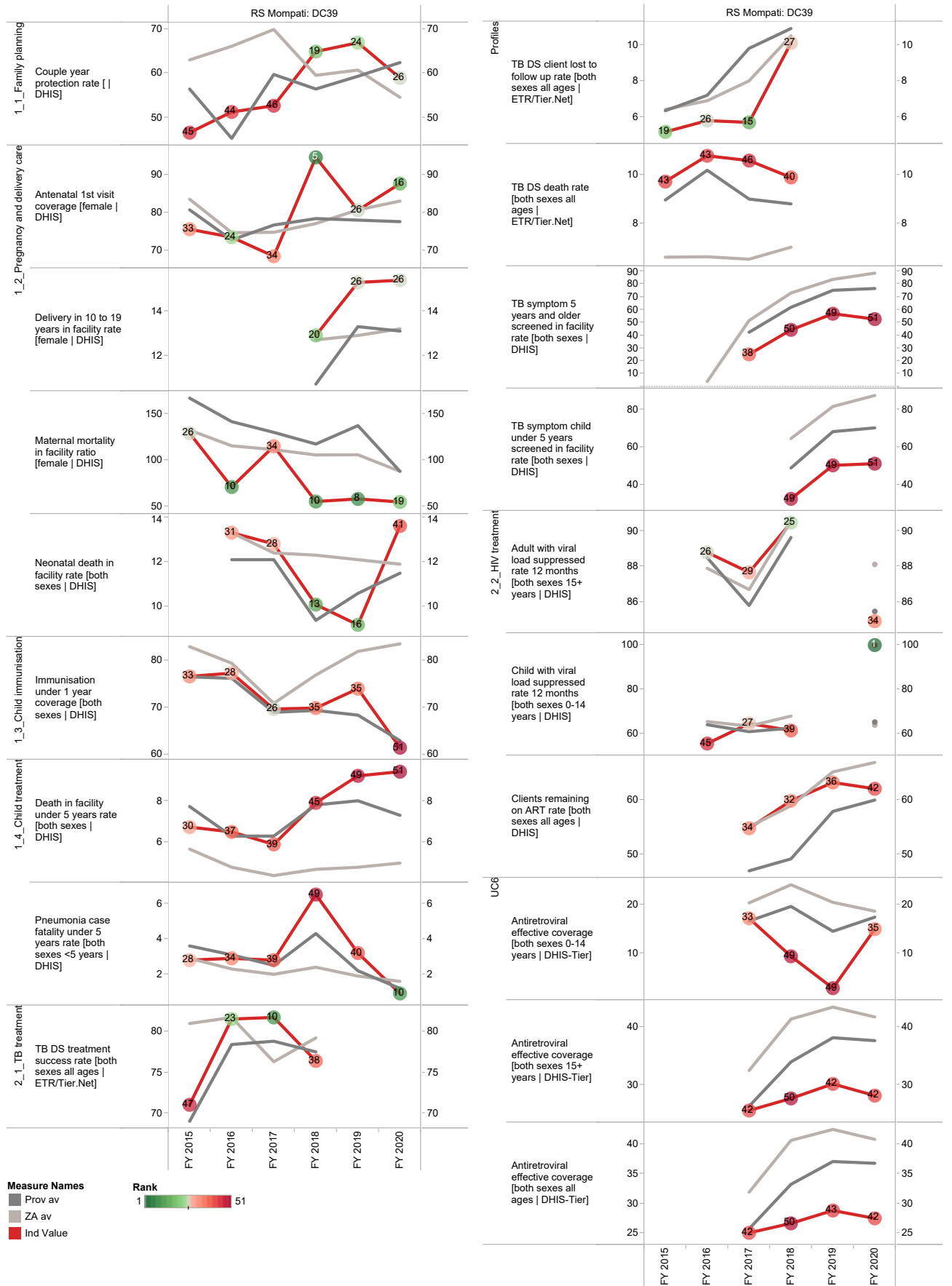
Percentage of deaths by broad causes and single leading causes



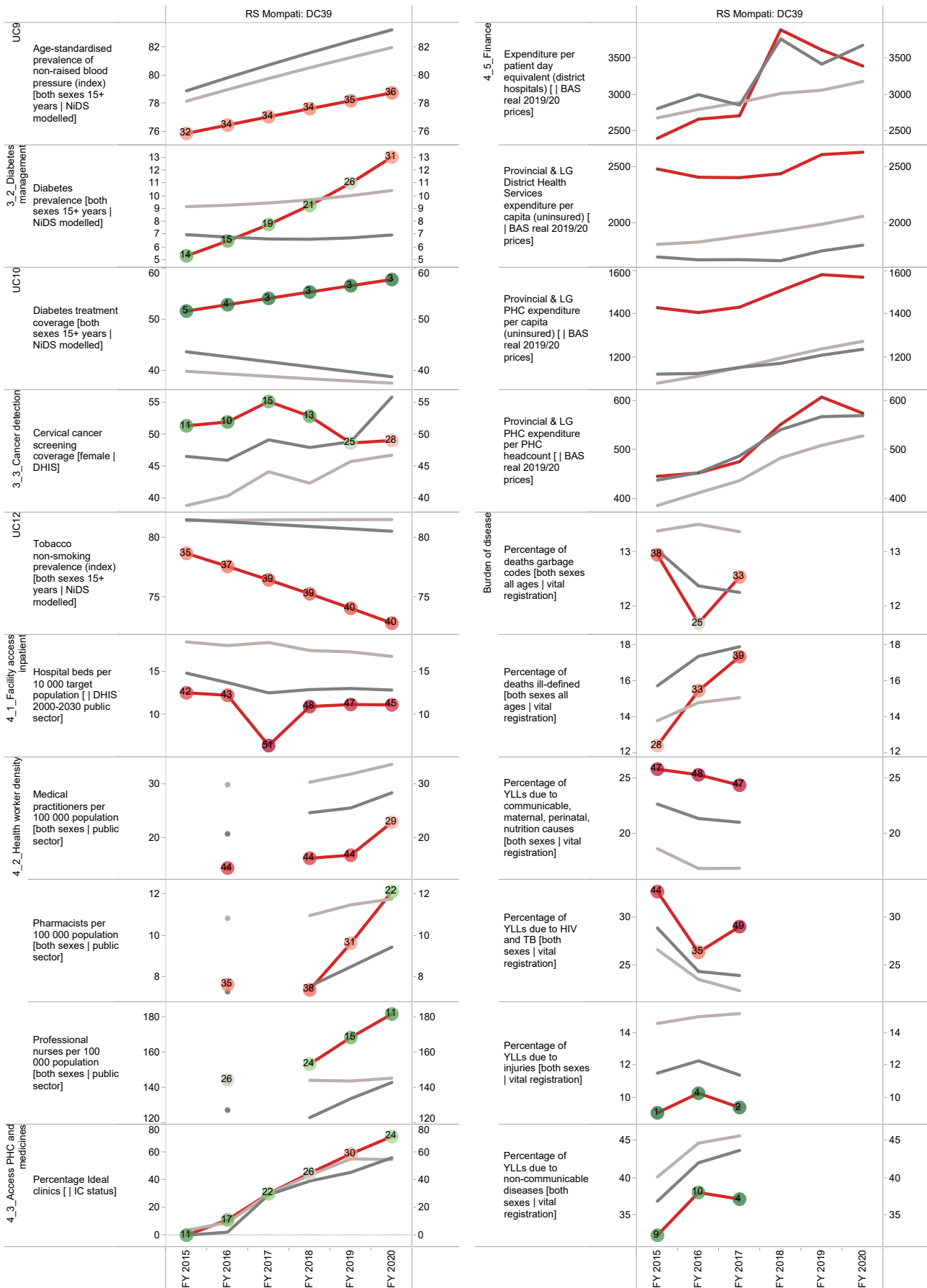
Percentages are shown according to all the deaths within the age/gender category of each box, although only the leading 10 causes are displayed.



Annual trends, 2015/16–2019/20



Section B: Profile North West Province



Dr Kenneth Kaunda District Municipality (DC40)

The Dr Kenneth Kaunda District Municipality^g is a Category C municipality in the North West Province. It is the smallest district in the province, making up 14% of its geographical area. The district consists of three local municipalities: JB Marks, City of Matlosana and Maquassi Hills.

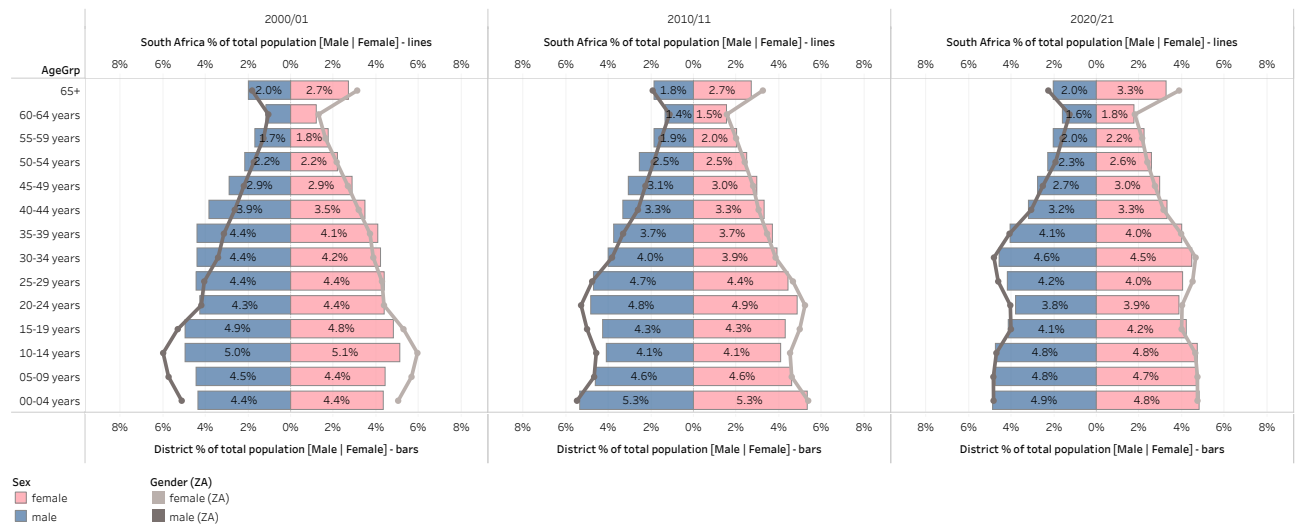
Cities/Towns: Hartbeesfontein, Klerksdorp, Leeudoringstad, Makwassie, Orkney, Potchefstroom, Stilfontein, Ventersdorp, Witpoort, Wolmaransstad

Area: 14 671km²

Population (2019)^h: 772 320

District percentage population by age-gender group compared to South Africa

NW, Dr K Kaunda DM (DC40)



Burden of disease profile

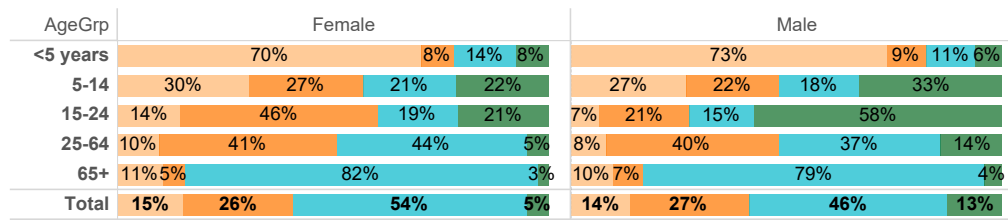
For the percentage of deaths by broad cause, deaths are classified into four groups, namely: (i) injuries; (ii) non-communicable diseases; (iii) HIV and TB; and (iv) communicable diseases together with maternal, perinatal and nutritional conditions. Data are given by gender and age group for the period 2012–2017. The second part of the graph shows the 10 leading single causes of death within each age group and by gender for 2012–2017.

g Available from: <https://municipalities.co.za/overview/140/dr-kenneth-kaunda-district-municipality>.

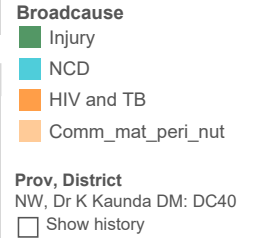
h Mid-year Population Estimates 2019, Stats SA.

Percentage of deaths by broad cause and leading causes, 2012–2017

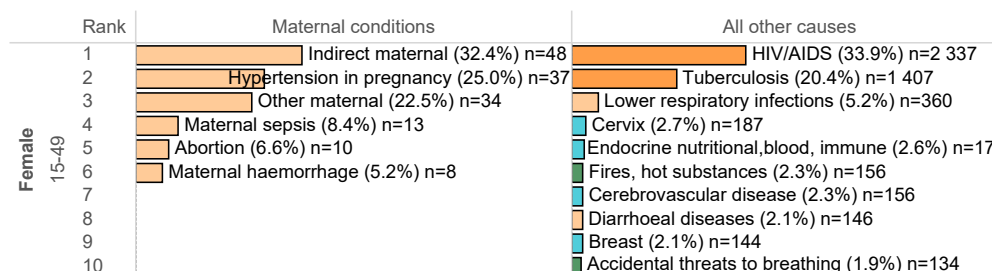
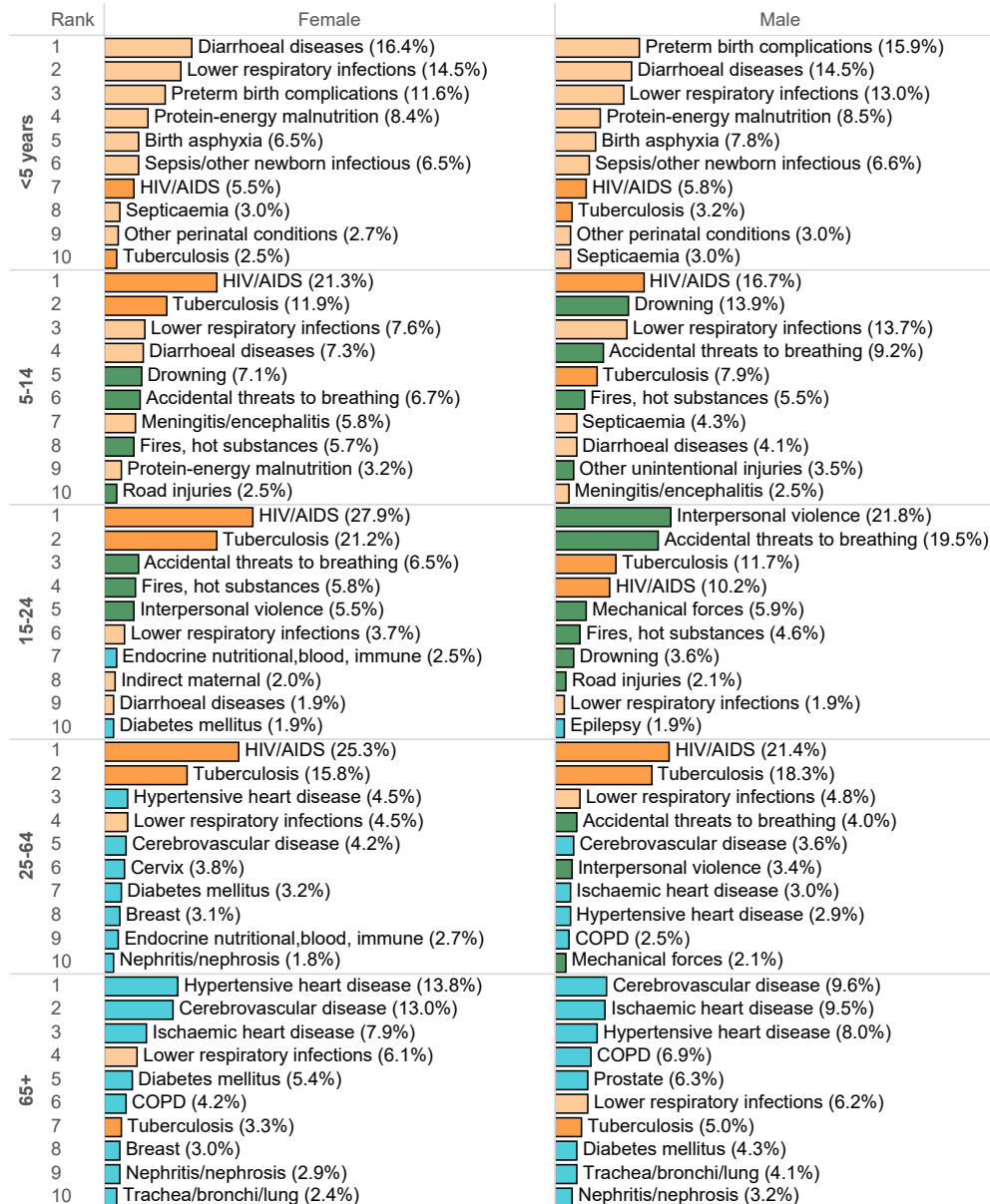
NW, Dr K Kaunda DM: DC40, 2012 - 2017



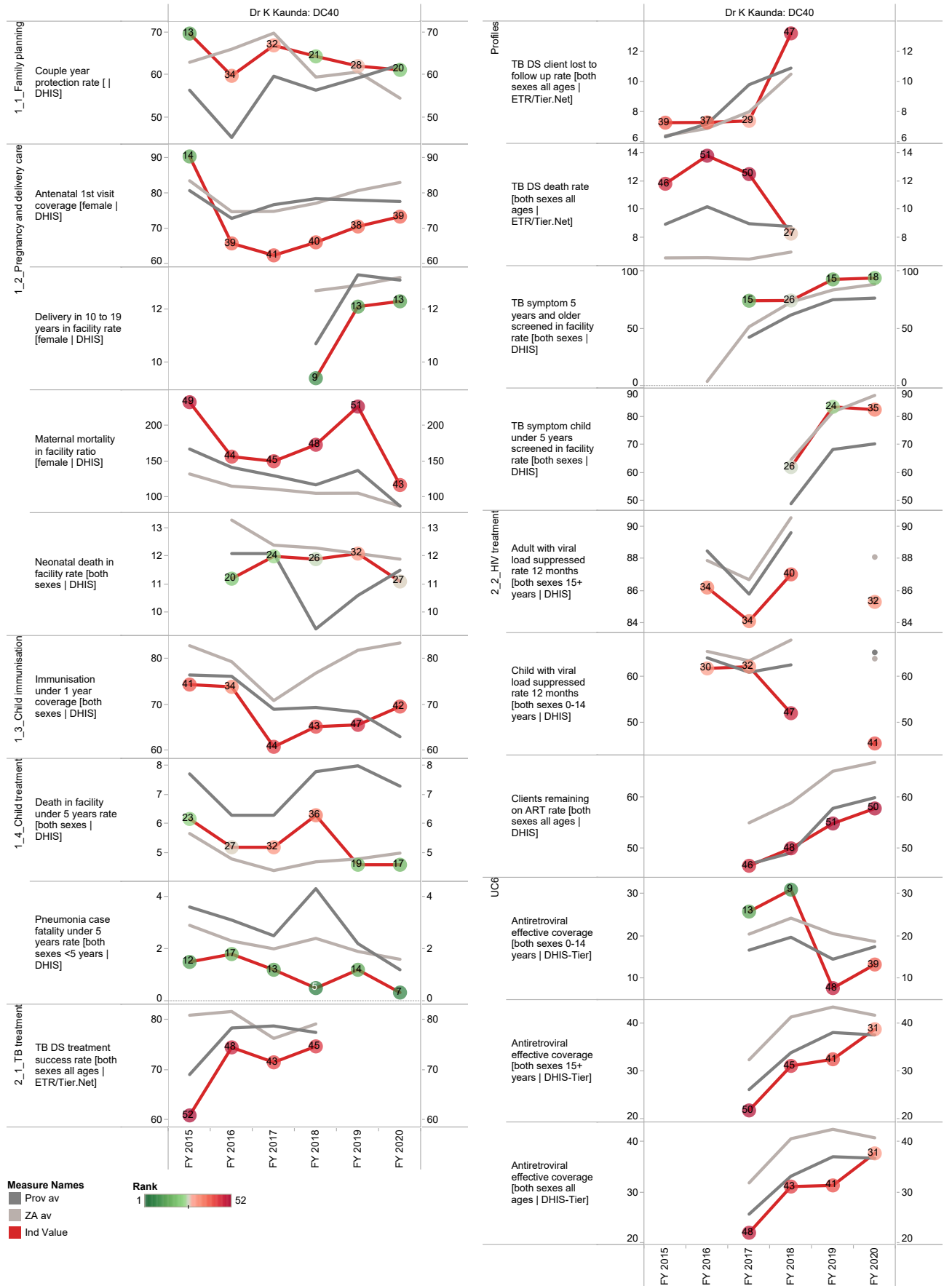
Percentage of deaths by broad causes and single leading causes



Percentages are shown according to all the deaths within the age/gender category of each box, although only the leading 10 causes are displayed.



Annual trends, 2015/16–2019/20



Section B: Profile North West Province

