

# Mpumalanga Province

## Gert Sibande District Municipality (DC30)

The Gert Sibande District Municipality<sup>1</sup> is Category C municipality located in the Mpumalanga Province and borders eSwatini. It comprises seven local municipalities: Govan Mbeki, Chief Albert Luthuli, Msukaligwa, Dipaleseng, Mkhondo, Lekwa and Dr Pixley Ka Seme.

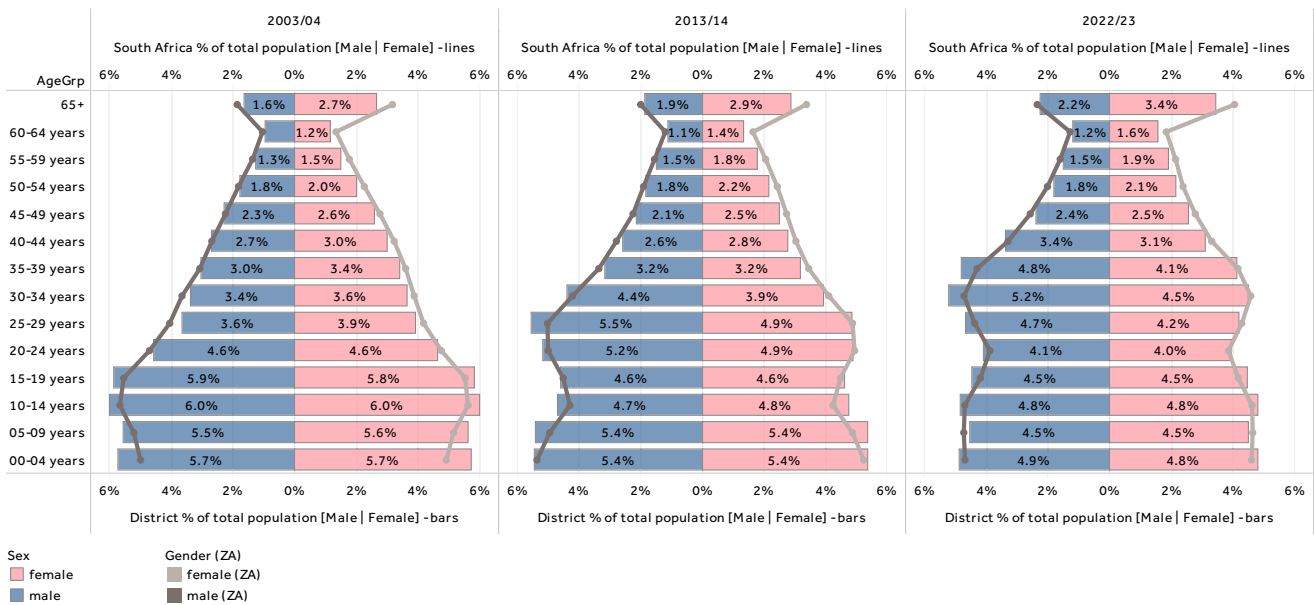
Cities/Towns: Amersfoort, Amsterdam, Balfour, Bethal, Breyten, Carolina, Charl Cilliers, Chrissiesmeer, Davel, Ekulindeni, Embalenhle, Empuluzi, Ermelo, Evander, Greylingstad, Grootvlei, Kinross, Leandra, Lothair, Morgenzon, Perdekop, Secunda, Standerton, Trichardt, Volksrust, Wakkerstroom, eManzana, eMkhondo (Piet Retief)

Area: 31 840km<sup>2</sup>

Population (2022)<sup>2</sup>: 1 283 719

### District percentage population by age-gender group compared to South Africa

#### G Sibande DM (DC30)

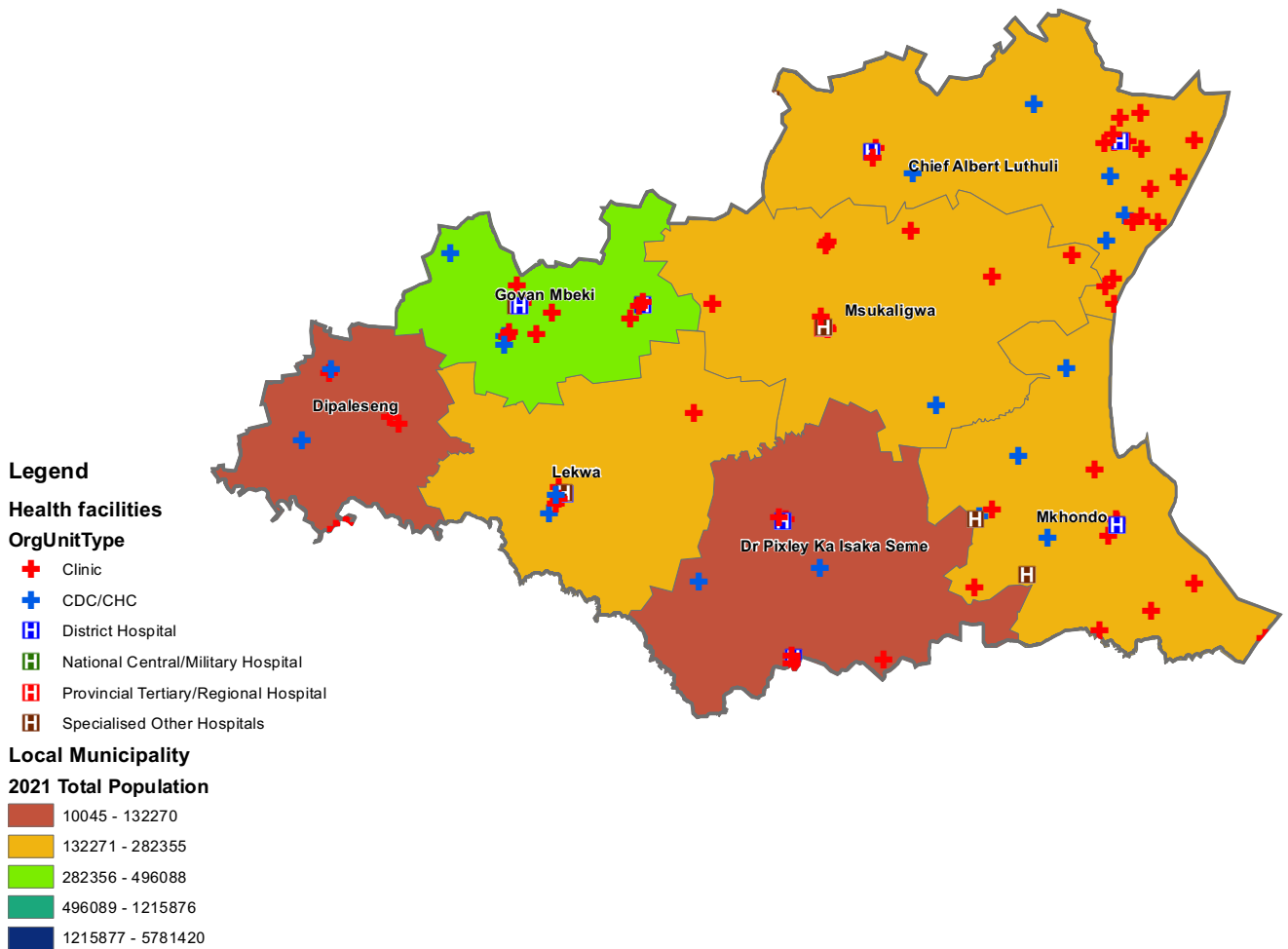


<sup>1</sup>The Local Government Handbook South Africa 2022. A complete guide to municipalities in South Africa. Twelfth Edition. Accessible at: [https://issuu.com/yesmedia/docs/localgovernmenthandbook\\_southafrica2022/1](https://issuu.com/yesmedia/docs/localgovernmenthandbook_southafrica2022/1)

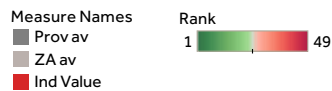
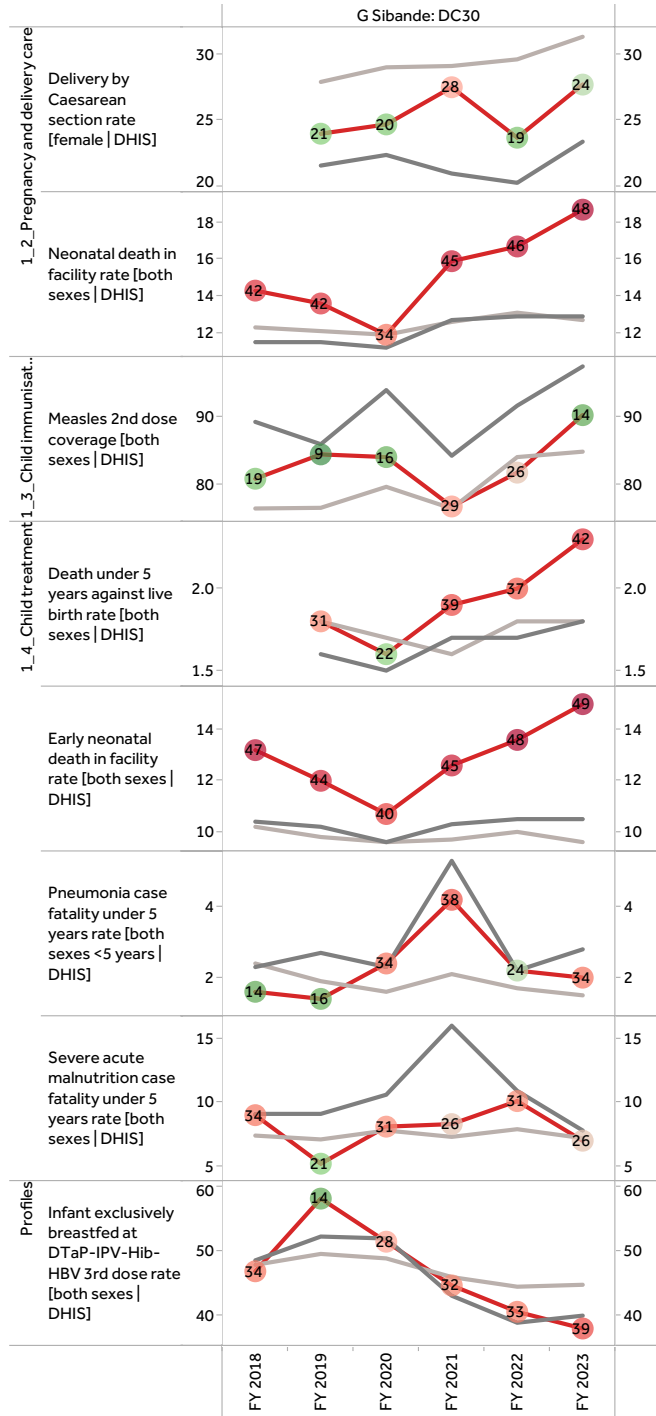
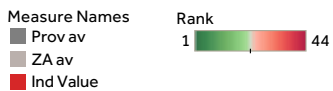
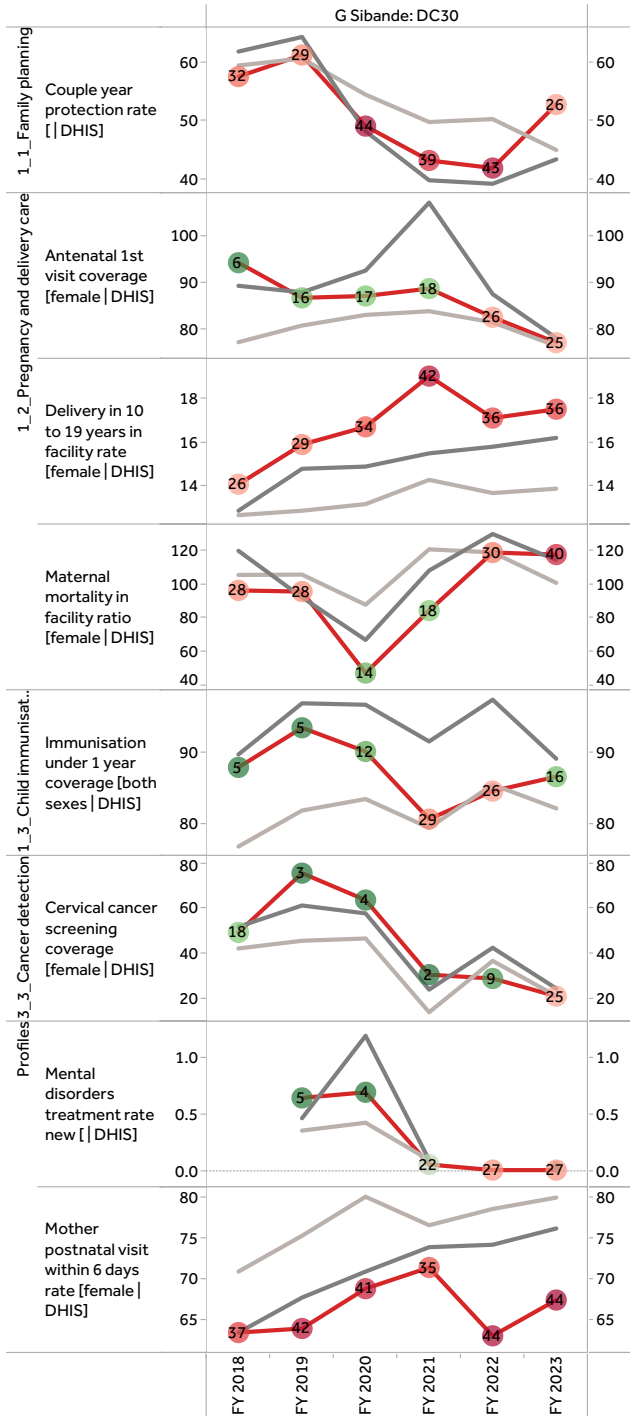
<sup>2</sup>Mid-year Population Estimates 2022, Stats SA.

## Population distribution, Local municipality boundaries and health facility locations

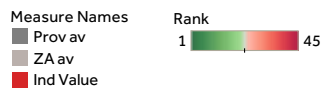
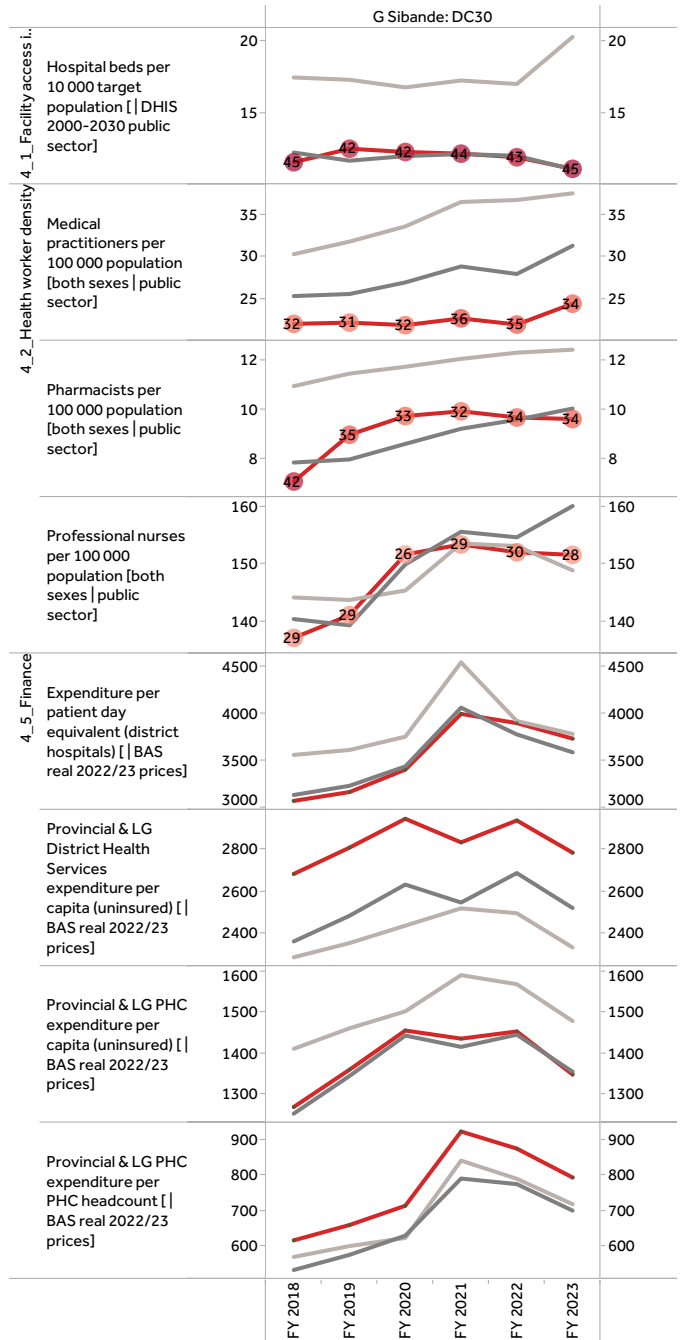
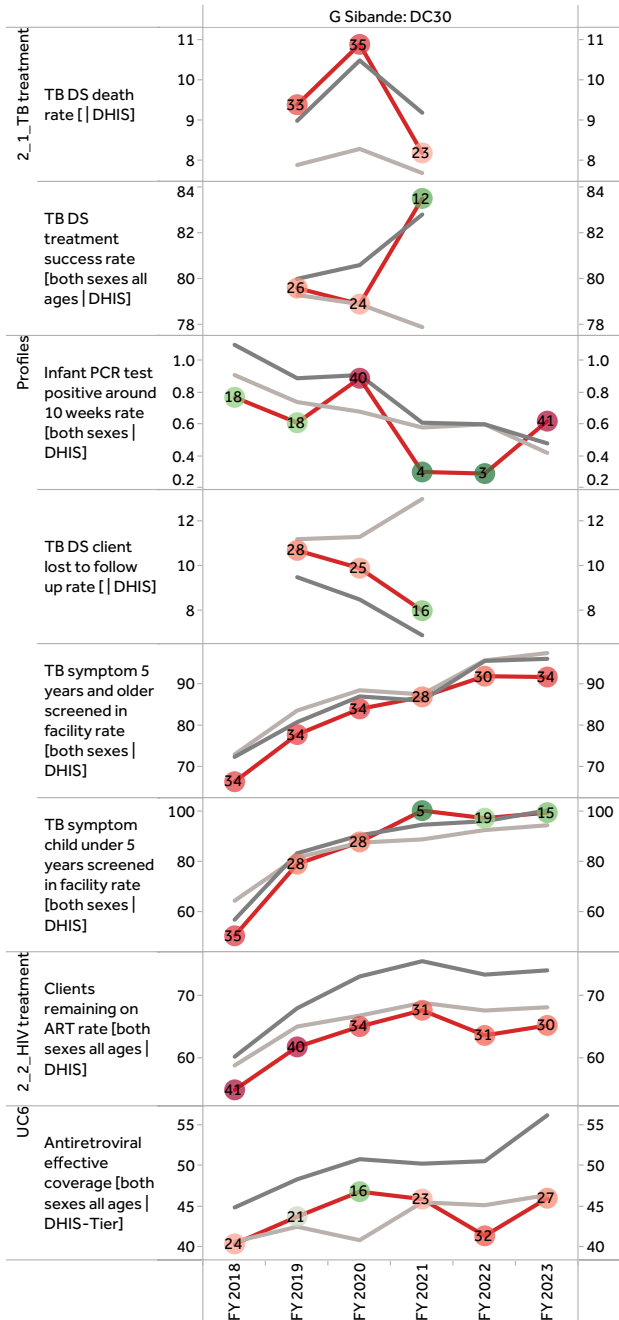
## Gert Sibande



Annual trends, 2018/19–2022/23



Annual trends, 2018/19–2022/23



## Nkangala District Municipality (DC31)

The Nkangala District Municipality<sup>3</sup> is a Category C municipality in the Mpumalanga Province. It is the smallest district of the three in the province, and consists of six local municipalities: Victor Khanye, Emalahleni, Steve Tshwete, Emakhazeni, Thembisile Hani, and Dr JS Moroka.

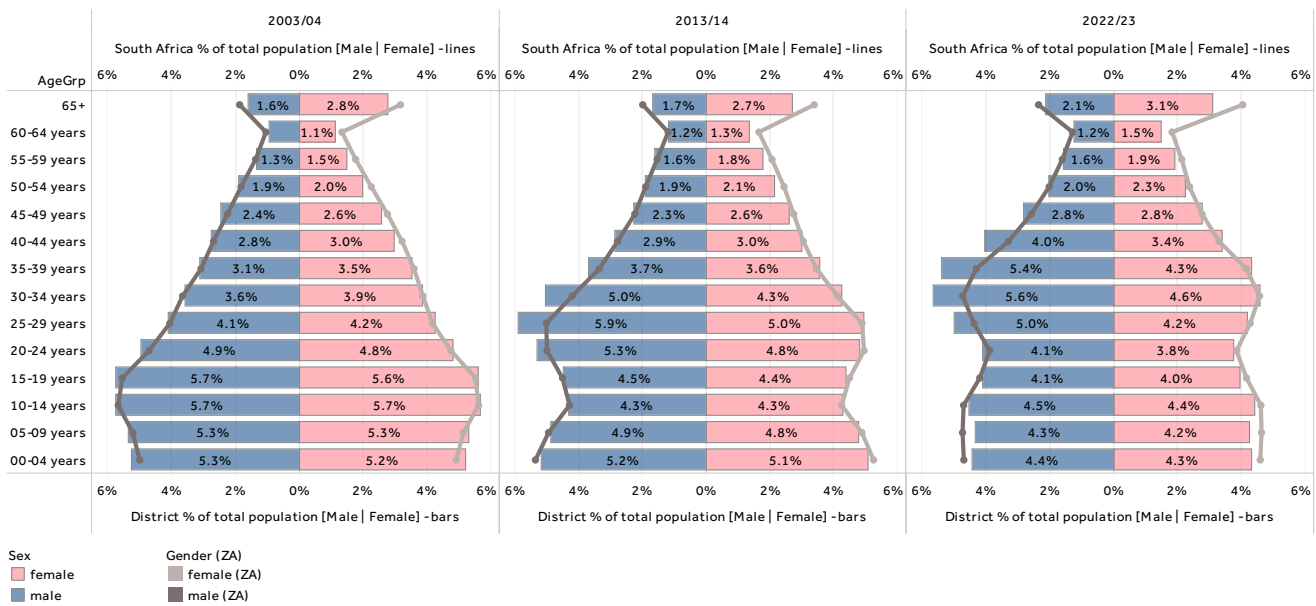
Cities/Towns: Delmas, Dullstroom, Emgwenya (Waterval Boven), Hendrina, Kriel, KwaMhlanga, Mdala Nature Reserve, Middelburg, Ogies, Phola, Pullens Hope, Rietkuil, eMakhazeni, eMalahleni, eNtokozweni (Machadodorp)

Area: 16 758km<sup>2</sup>

Population (2022)<sup>4</sup>: 1 677 408

### District percentage population by age-gender group compared to South Africa

#### Nkangala DM (DC31)

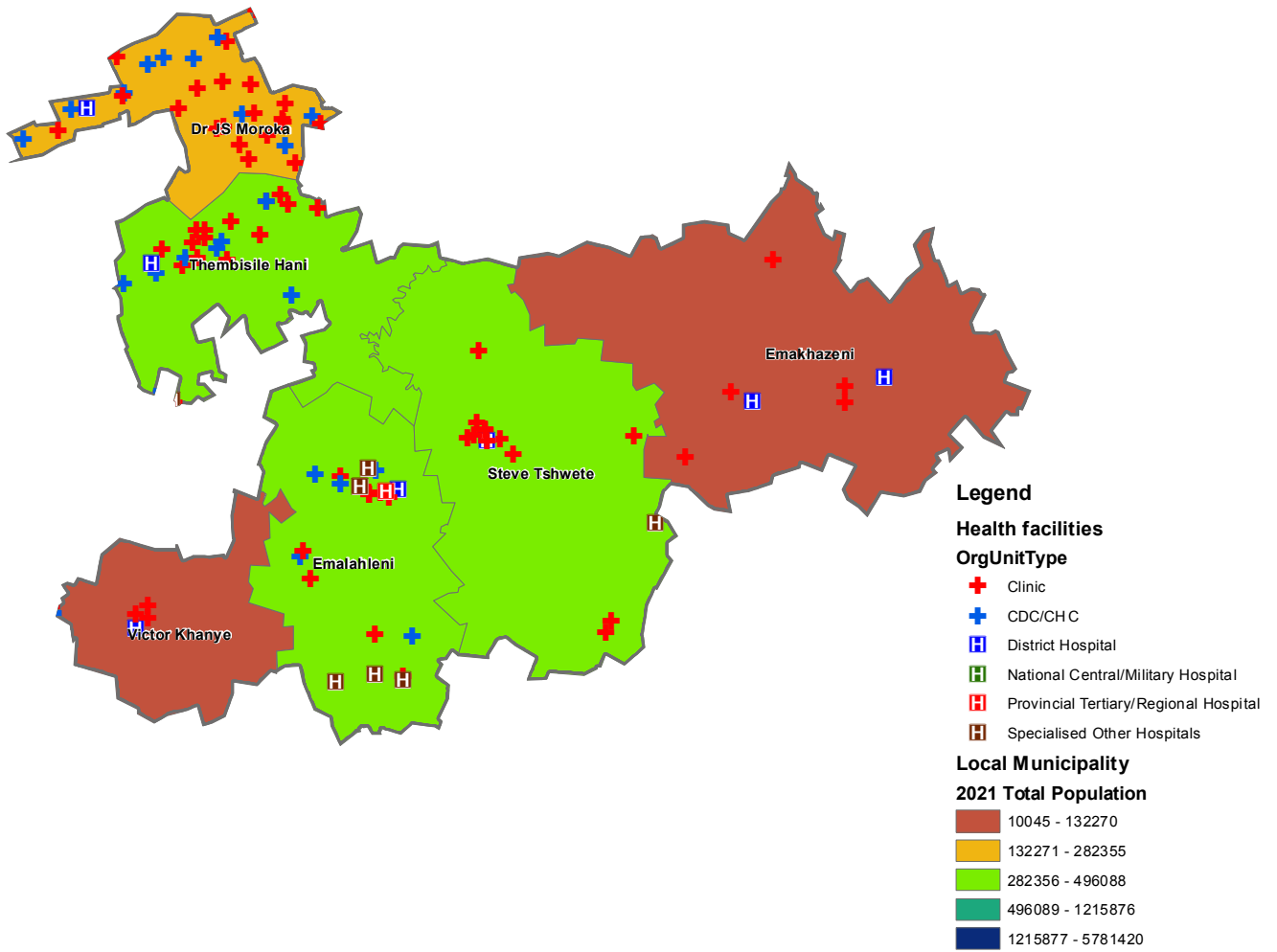


<sup>3</sup>The Local Government Handbook South Africa 2022. A complete guide to municipalities in South Africa. Twelfth Edition. Accessible at: [https://issuu.com/yesmedia/docs/localgovernmenthandbook\\_southafrica2022/1](https://issuu.com/yesmedia/docs/localgovernmenthandbook_southafrica2022/1)

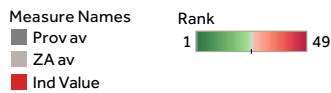
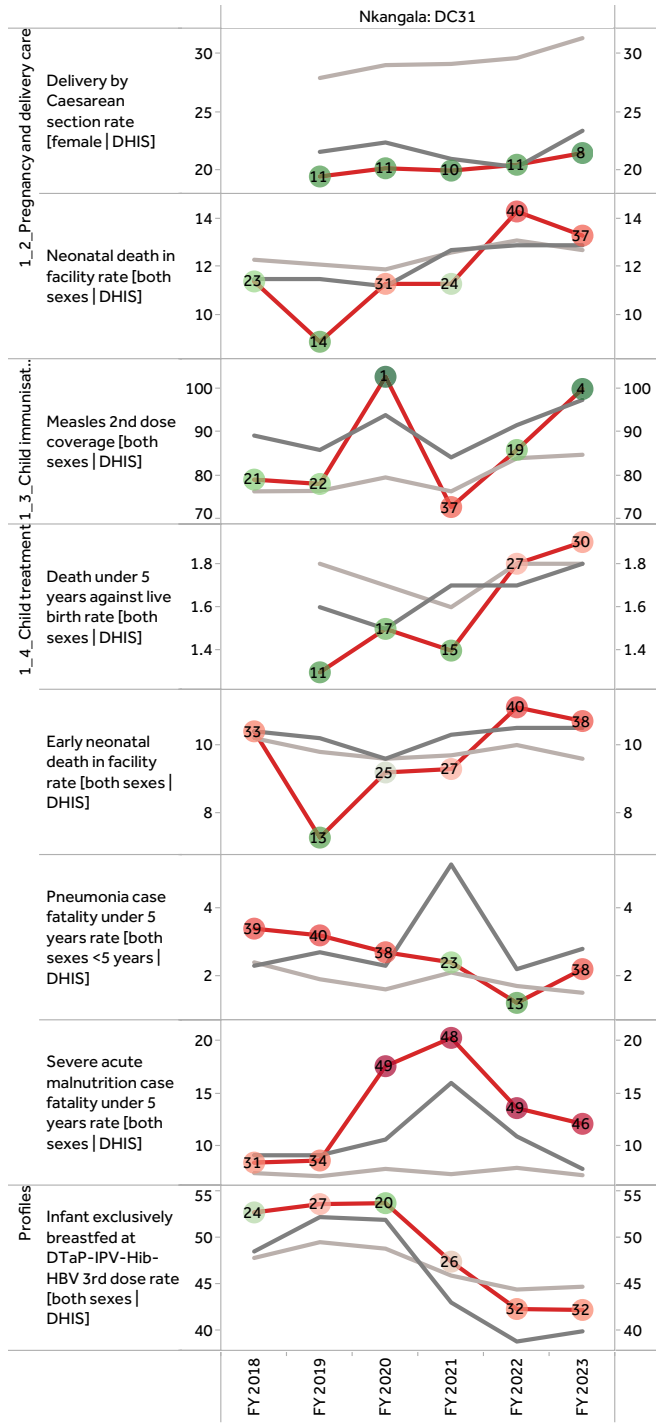
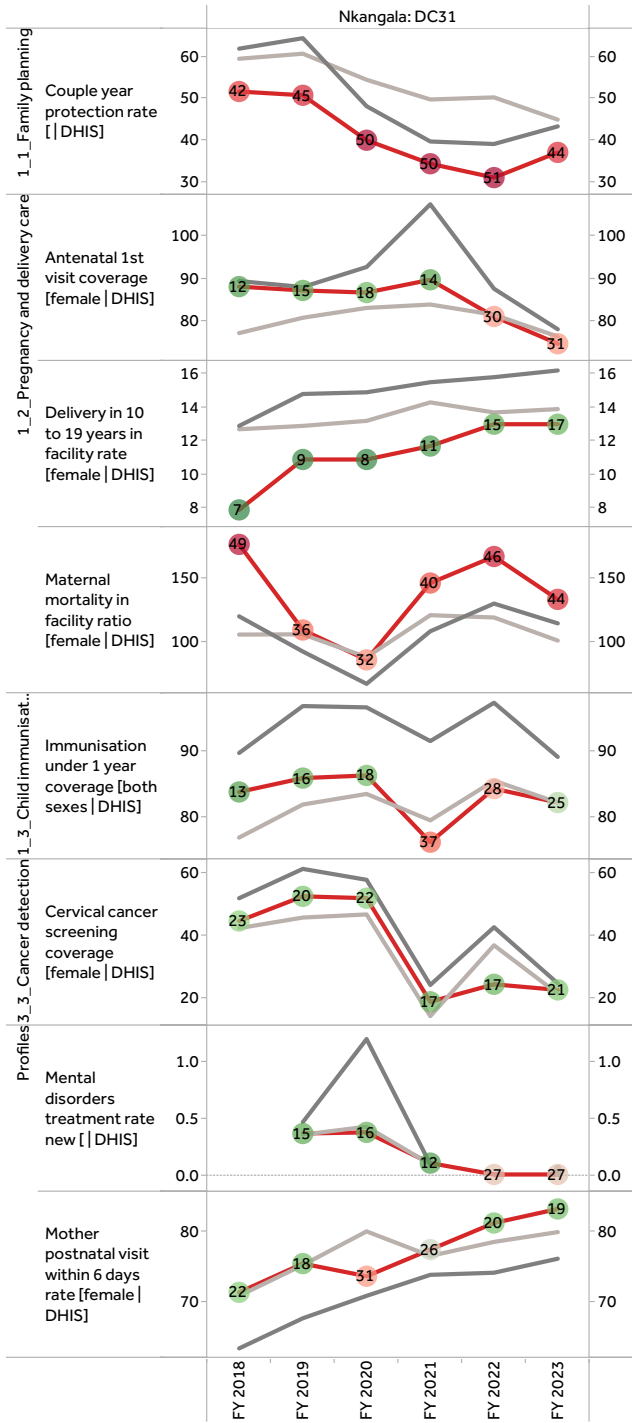
<sup>4</sup>Mid-year Population Estimates 2022, Stats SA.

## Population distribution, Local municipality boundaries and health facility locations

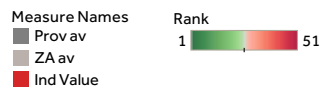
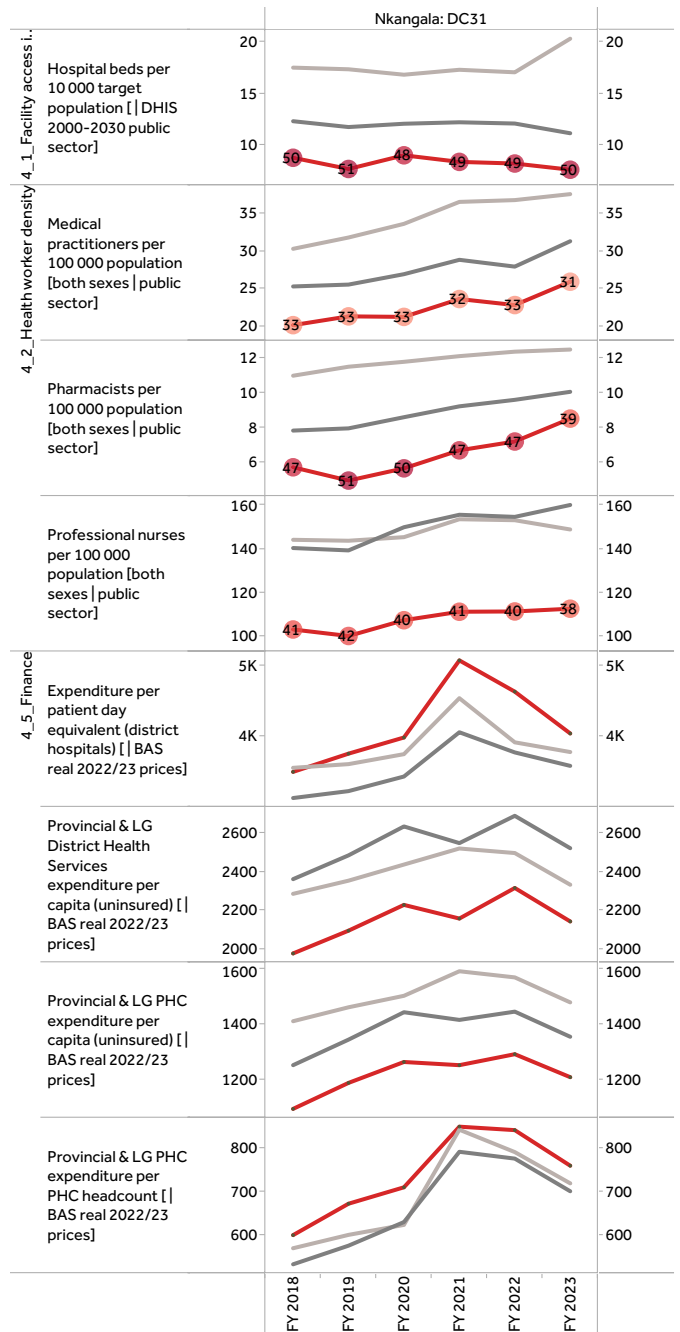
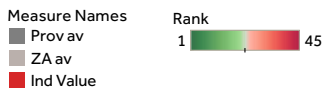
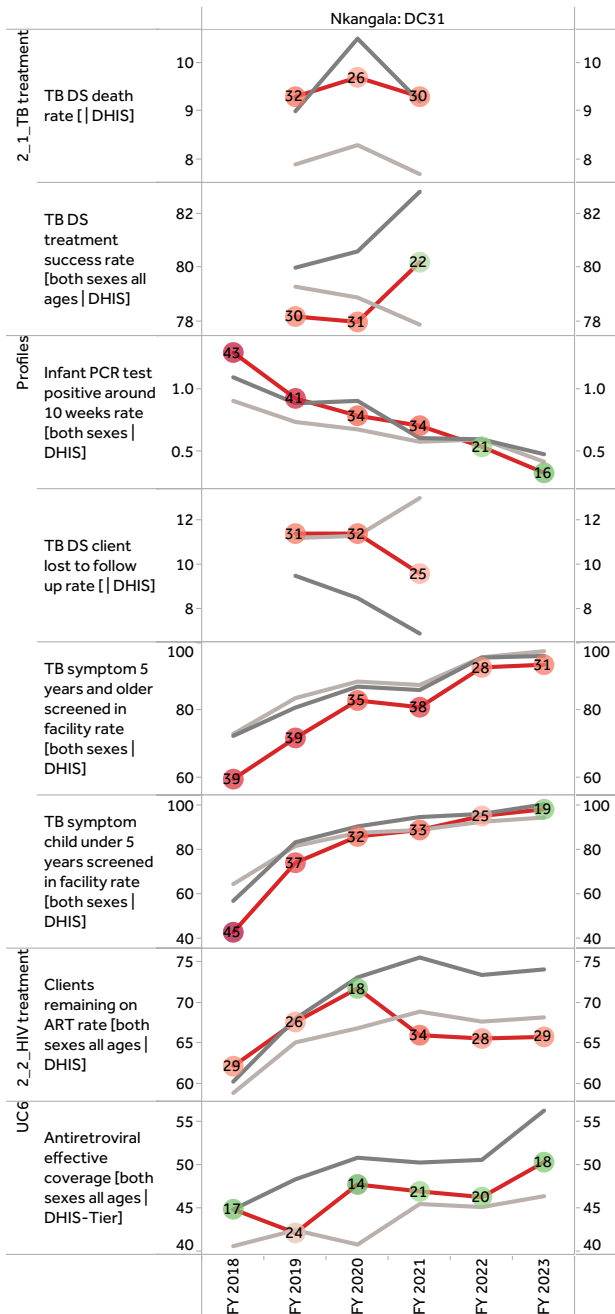
## Nkangala



Annual trends, 2018/19–2022/23



Annual trends, 2018/19–2022/23





## Ehlanzeni District Municipality (DC32)

The Ehlanzeni District Municipality<sup>5</sup> is a Category C municipality situated in the north-east of the Mpumalanga Province. The district comprises four local municipalities: Bushbuckridge, City of Mbombela, Nkomazi and Thaba Chweu.

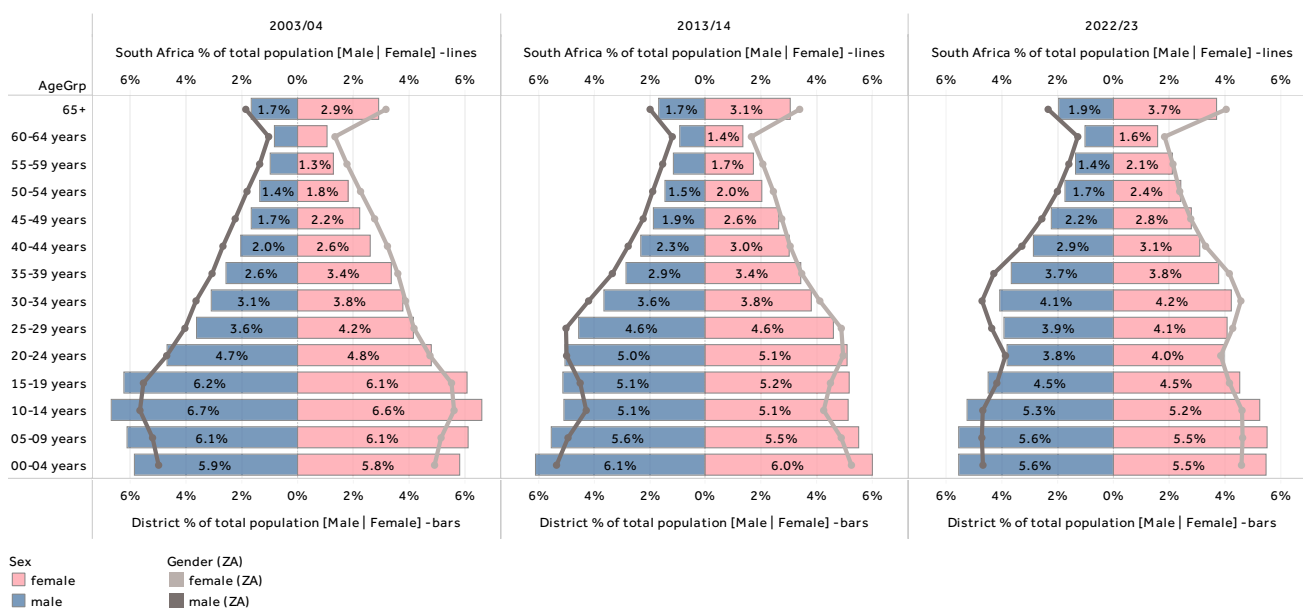
Cities/Towns: Barberton, Emoyeni, Entokozweni, Graskop, Hazyview, Kaapschehoop, Kabokweni, Kanyamazane, Komatipoort, Luphisi, Lydenburg, Malalane, Marloth Park, Mashishing, Matsulu, Mbombela, Mpakeni, Msogwaba, Ngodwana, Pilgrim's Rest, Sabie, Sabie Park, Skukuza, Tekwane, White River

Area: 27 895km<sup>2</sup>

Population (2022)<sup>6</sup>: 1 853 931

### District percentage population by age-gender group compared to South Africa

#### Ehlanzeni DM (DC32)

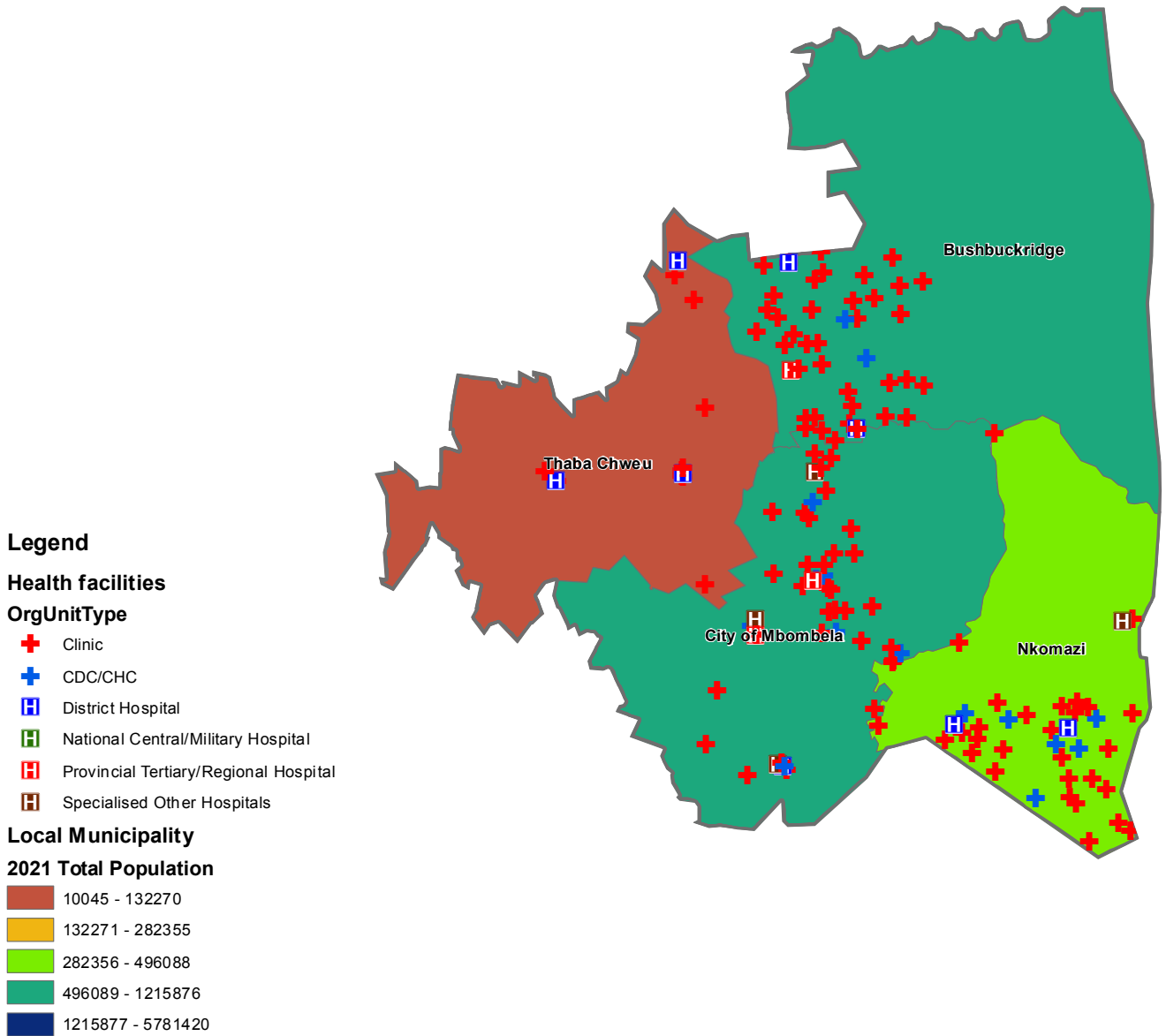


<sup>5</sup>The Local Government Handbook South Africa 2022. A complete guide to municipalities in South Africa. Twelfth Edition. Accessible at: [https://issuu.com/yesmedia/docs/localgovernmenthandbook\\_southafrica2022/1](https://issuu.com/yesmedia/docs/localgovernmenthandbook_southafrica2022/1)

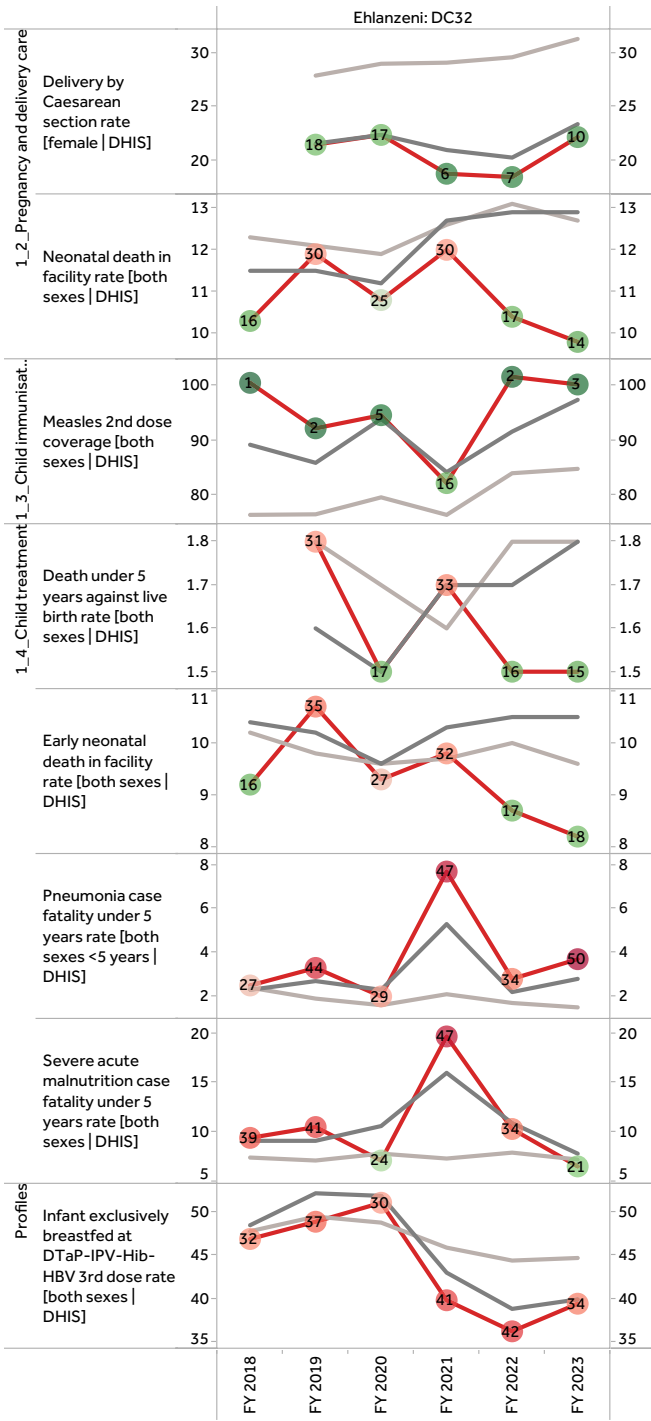
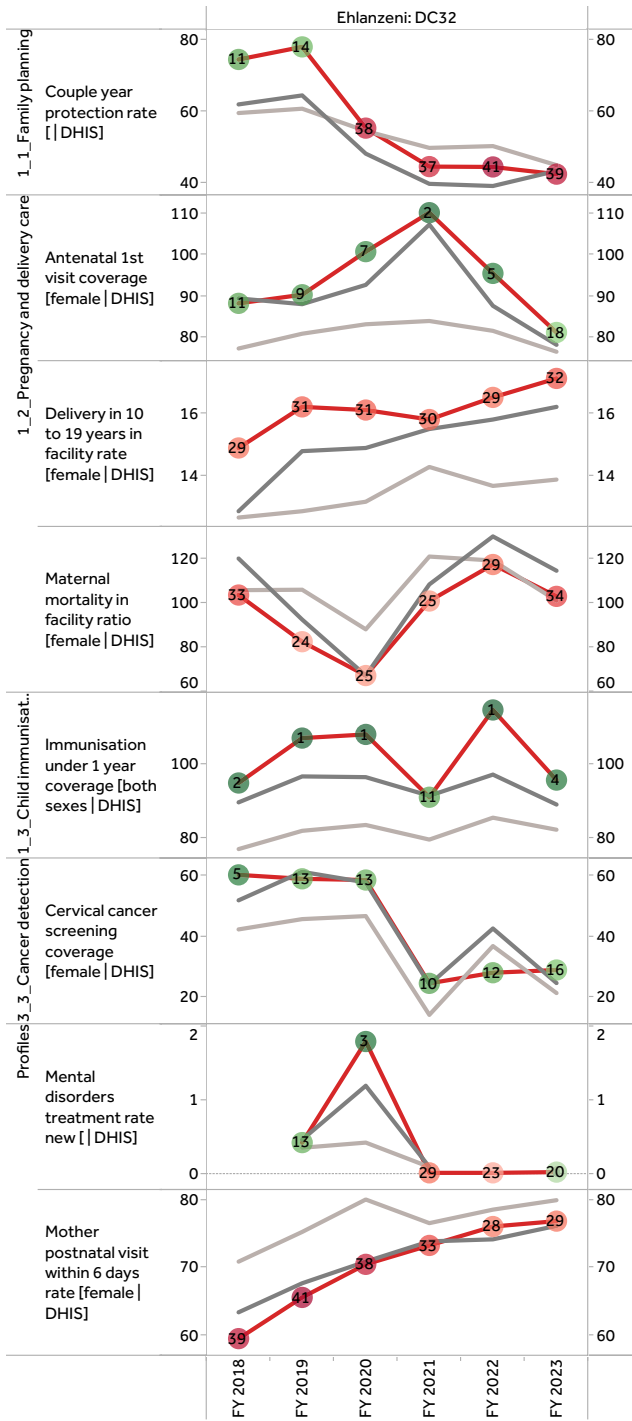
<sup>6</sup>Mid-year Population Estimates 2022, Stats SA.

## Population distribution, Local municipality boundaries and health facility locations

## Ehlanzeni



Annual trends, 2018/19–2022/23



Annual trends, 2018/19–2022/23

