



11 Limpopo Province

Mopani District Municipality (DC33)

The Mopani District Municipality¹ is a Category C municipality located within the north-eastern quadrant of the Limpopo Province. It is bordered in the north by Zimbabwe and in the east by Mozambique. The district consists of five local municipalities:

Ba-Phalaborwa, Greater Giyani, Greater Letaba, Greater Tzaneen and Maruleng.

Area: 20 012km²

Population (2023)²: 1 241 931

Households¹: 338 427

Formal dwellings¹: 90.7%

Cities/Towns:

Ba-Phalaborwa: Gravelotte, Leydsdorp

Greater Giyani: Giyani

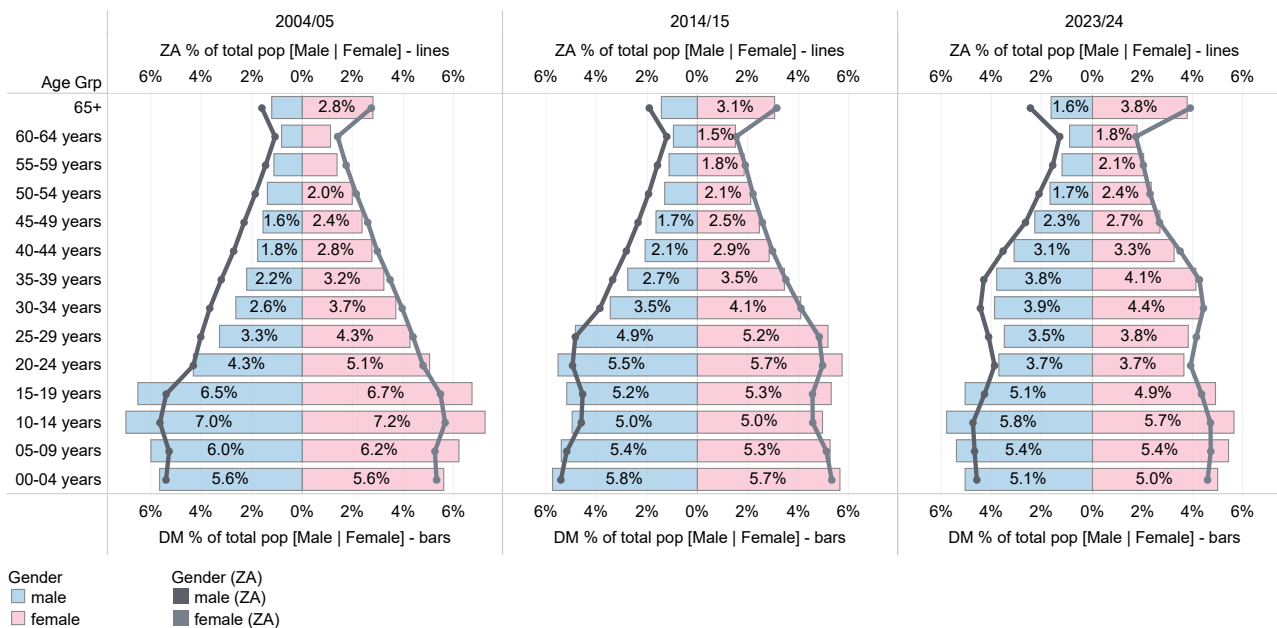
Greater Letaba: Modjadjikloof

Greater Tzaneen: Haenertsburg, Tzaneen

Maruleng: Hoedspruit

District percentage population by age-gender group compared to South Africa

Mopani DM (DC33)

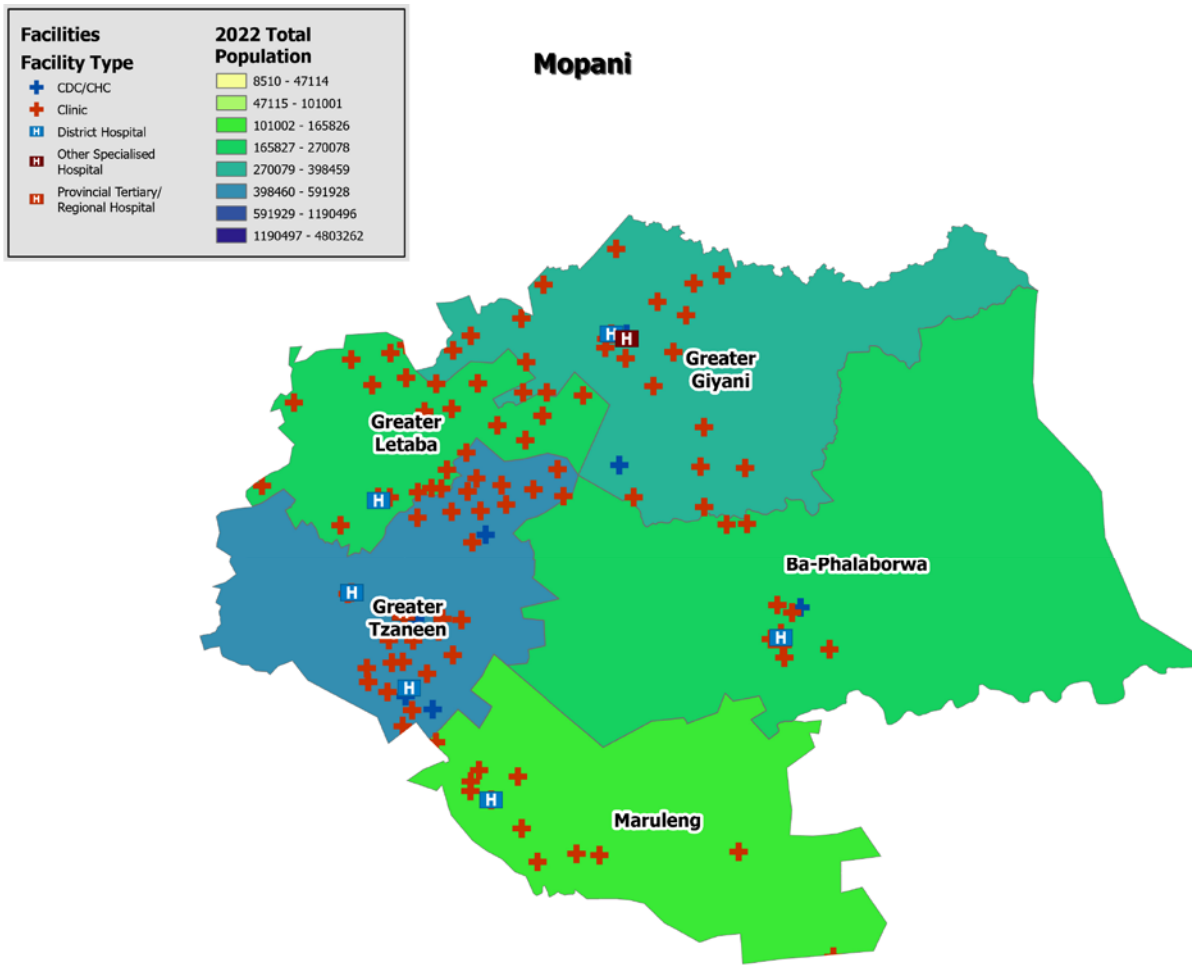


Source: DHIS

1 Local Government Handbook: South Africa 2023. The complete guide to local government in South Africa. Cape Town: Yes Media. 2023. Accessible at: https://issuu.com/yesmedia/docs/localgovernmenthandbook_southafrica2023

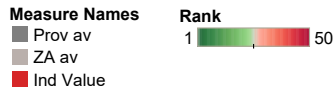
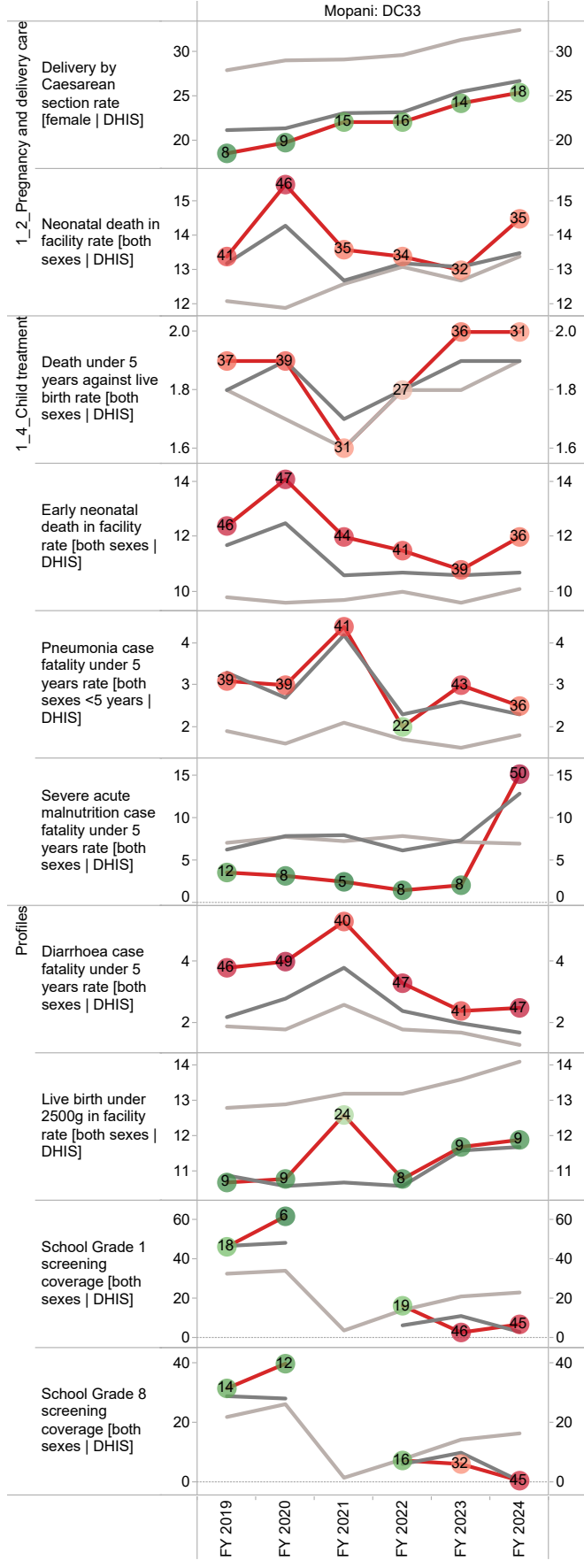
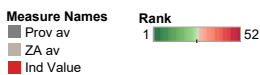
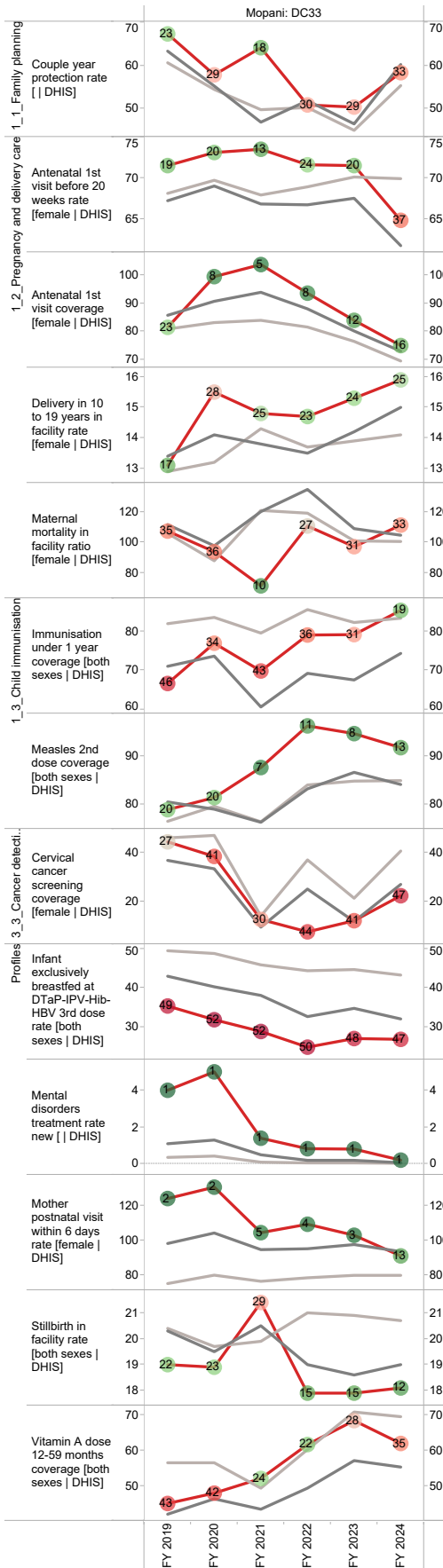
2 Mid-year Population Estimates 2023, DHIS.

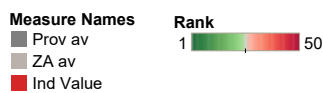
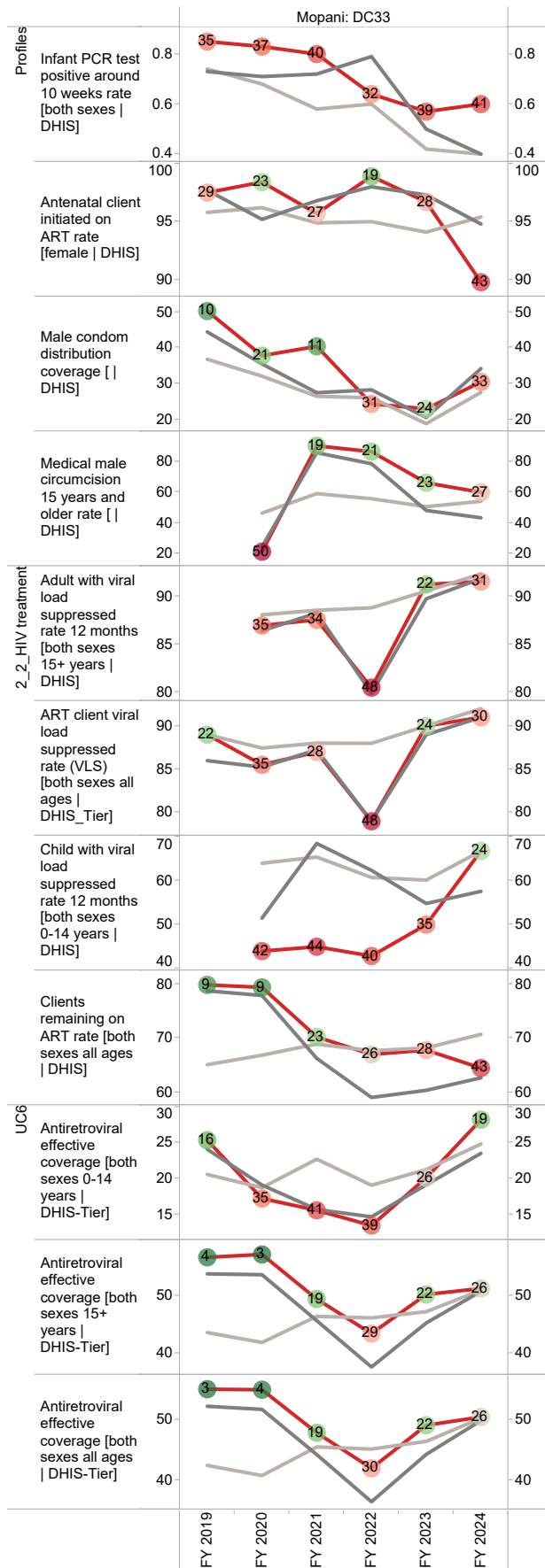
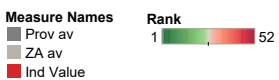
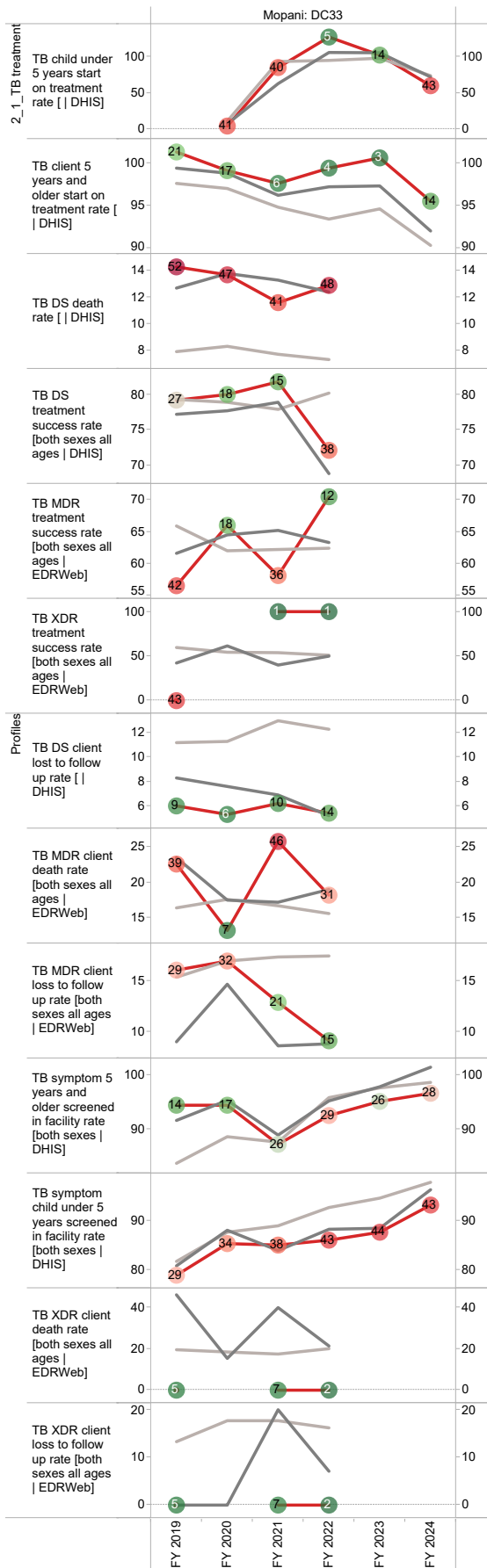
Population distribution, sub-district boundaries and health facility locations

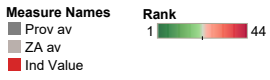
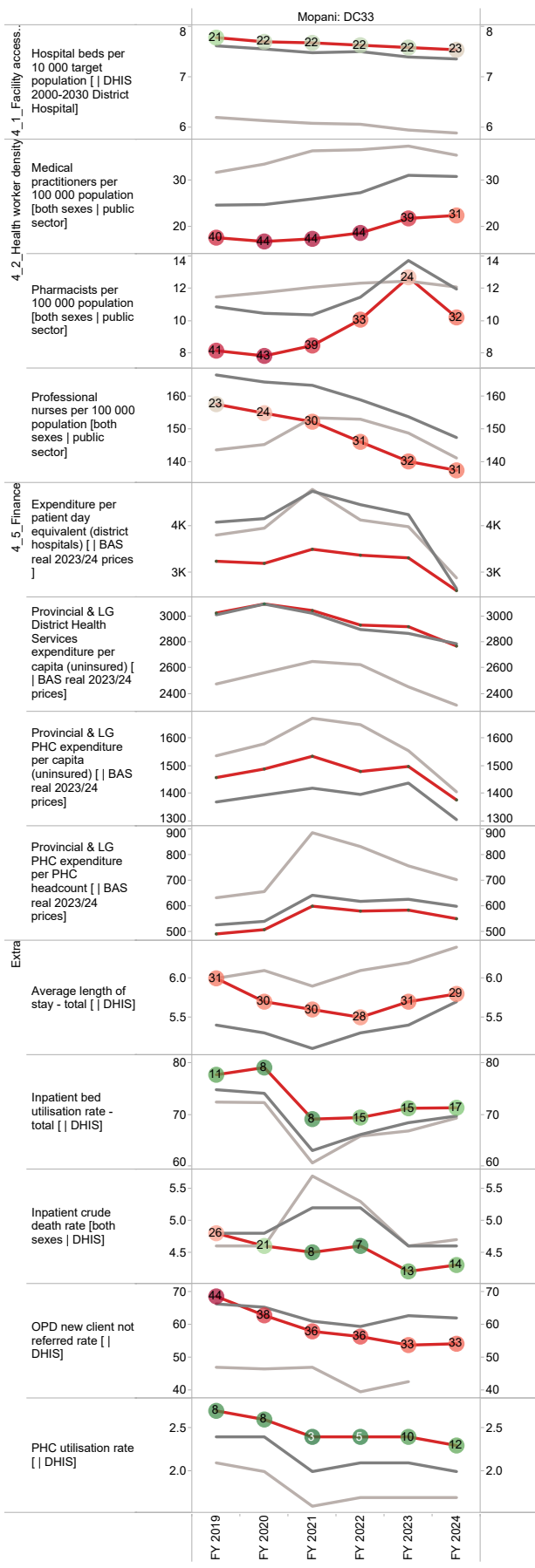


Source: DHIS

Annual trends, 2018/19–2023/24







Vhembe District Municipality (DC34)

The Vhembe District Municipality³ is a Category C municipality located in the northern part of the Limpopo Province. It shares borders with Zimbabwe and Botswana in the north-west and Mozambique in the south-east through the Kruger National Park. It comprises four local municipalities: Musina, Thulamela, Makhado and Collins Chabane.

Area: 25 597km²

Population (2023)⁴: 1 514 770

Households³: 382 357

Formal dwellings³: 86.3%

Cities/Towns:

Musina: Musina

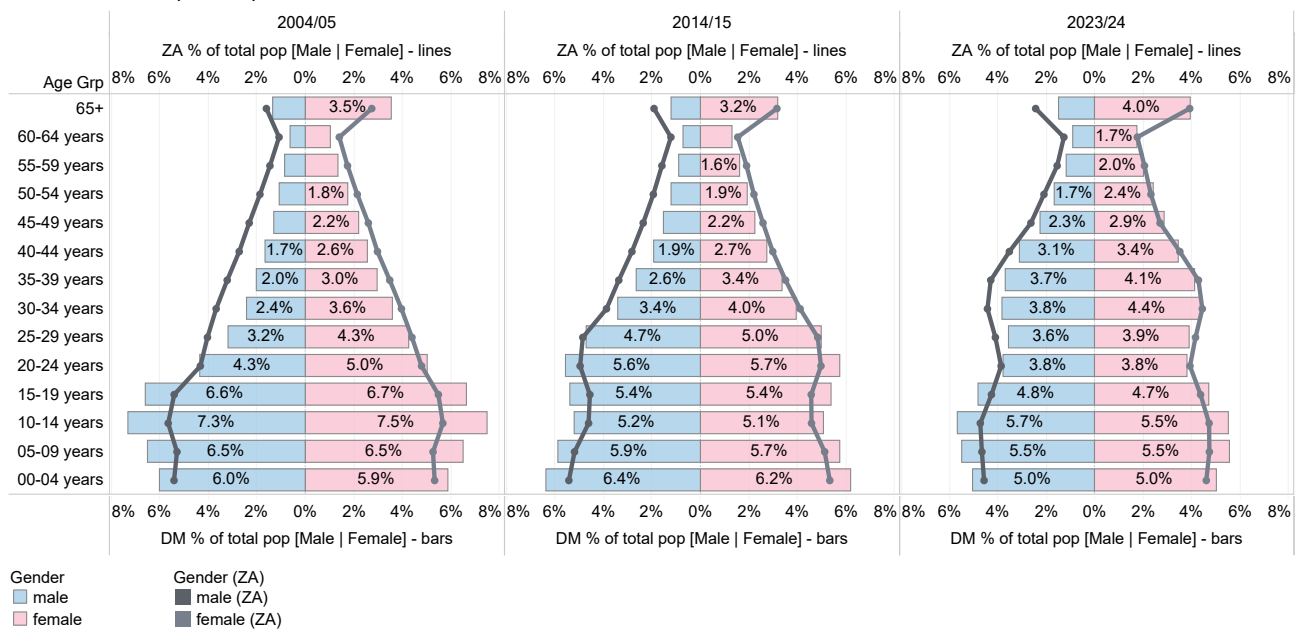
Thulamela: Thohoyandou

Makhado: Makhado

Collins Chabane: Malamulele,

District percentage population by age-gender group compared to South Africa

Vhembe DM (DC34)



Source: DHIS

³ Local Government Handbook: South Africa 2023. The complete guide to local government in South Africa. Cape Town: Yes Media. 2023. Accessible at: https://issuu.com/yesmedia/docs/localgovernmenthandbook_southafrica2023

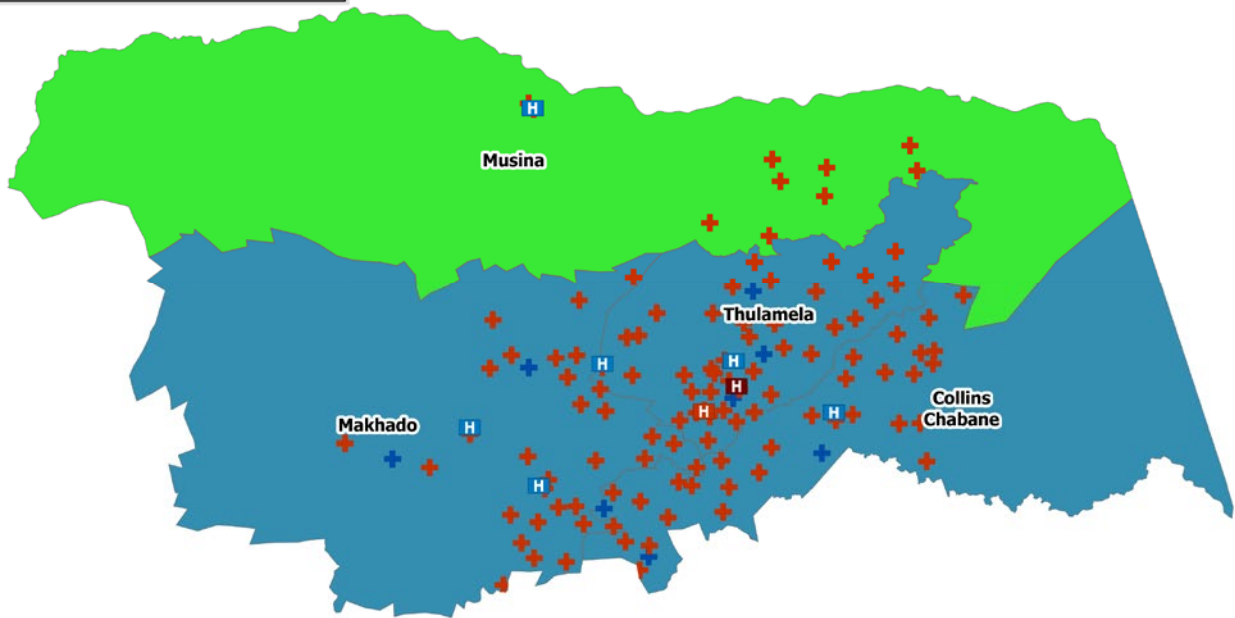
⁴ Mid-year Population Estimates 2023, DHIS.



Population distribution, sub-district boundaries and health facility locations

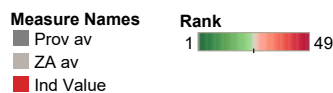
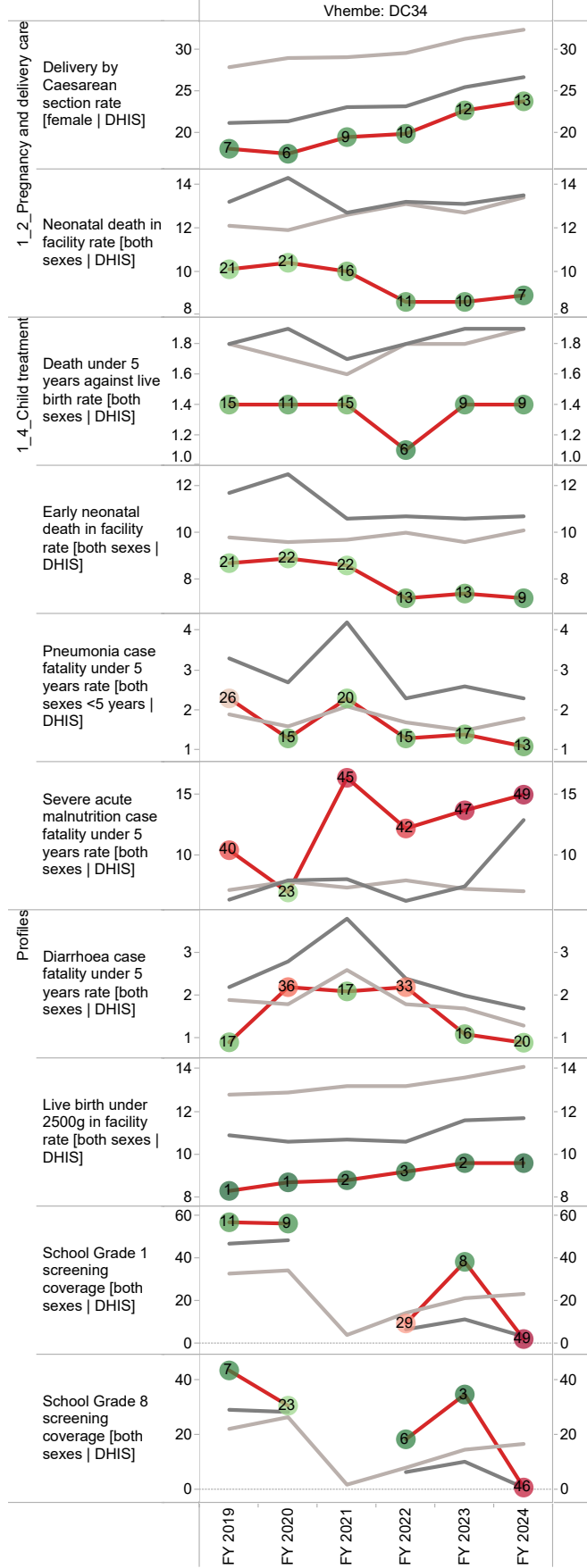
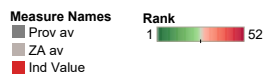
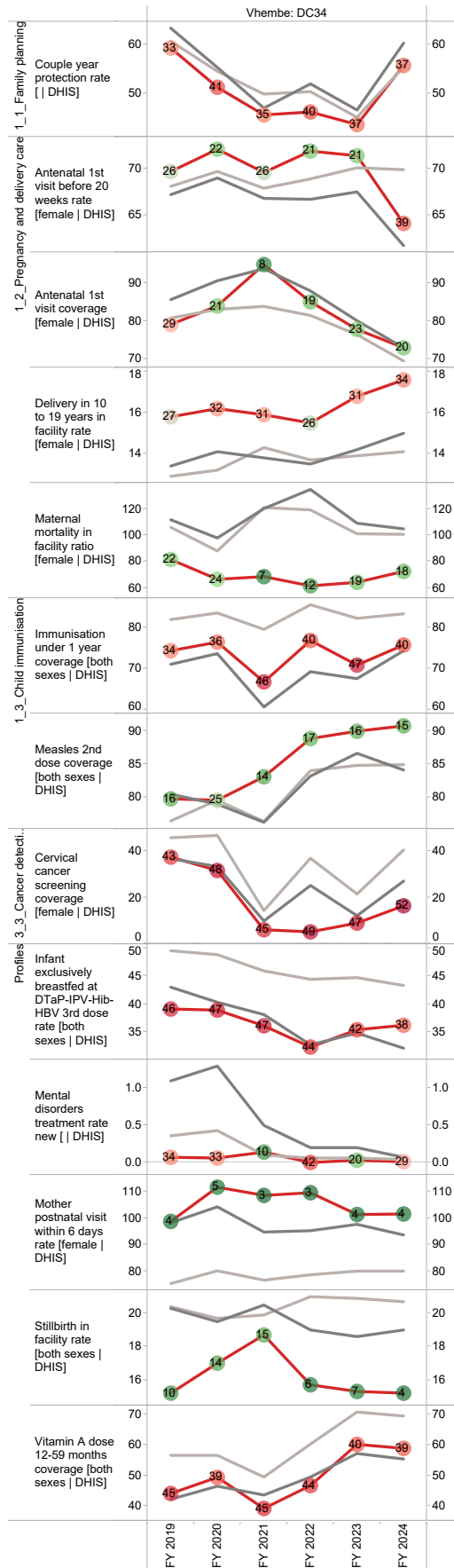
Facilities	2022 Total Population
Facility Type	
+ CDC/CHC	8510 - 47114
+ Clinic	47115 - 101001
+ District Hospital	101002 - 165826
+ Other Specialised Hospital	165827 - 270078
+ Provincial Tertiary/Regional Hospital	270079 - 398459
	398460 - 591928
	591929 - 1190496
	1190497 - 4803262

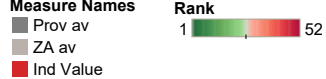
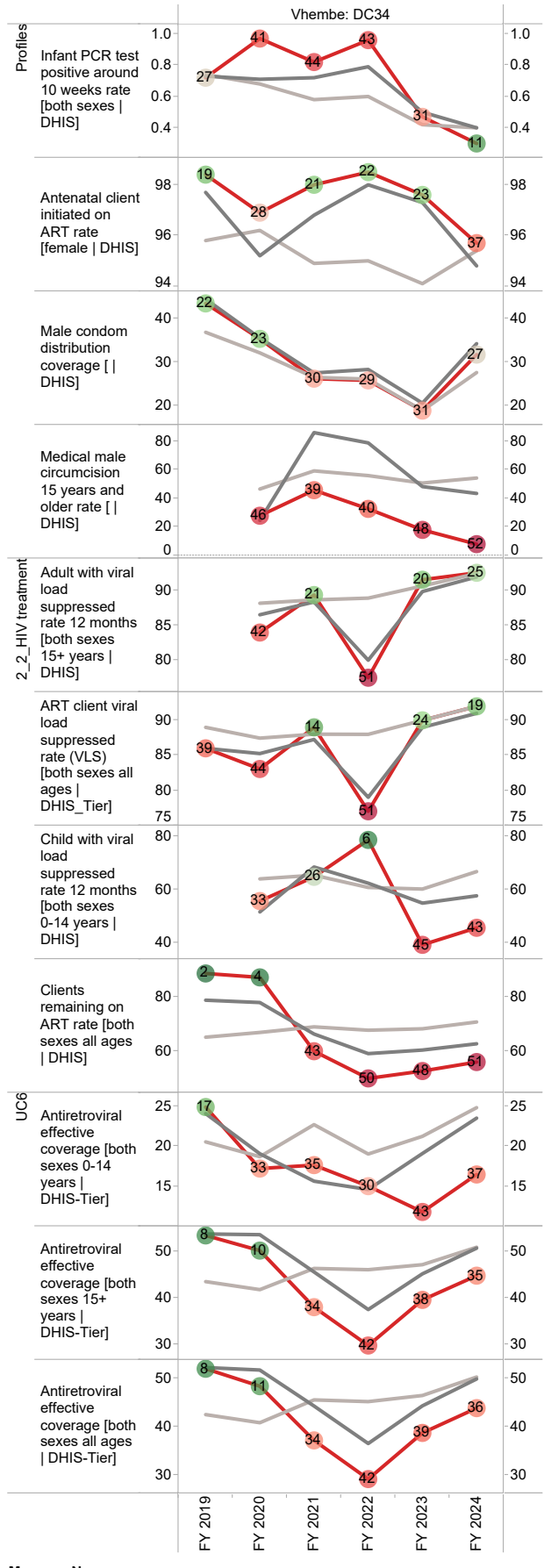
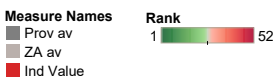
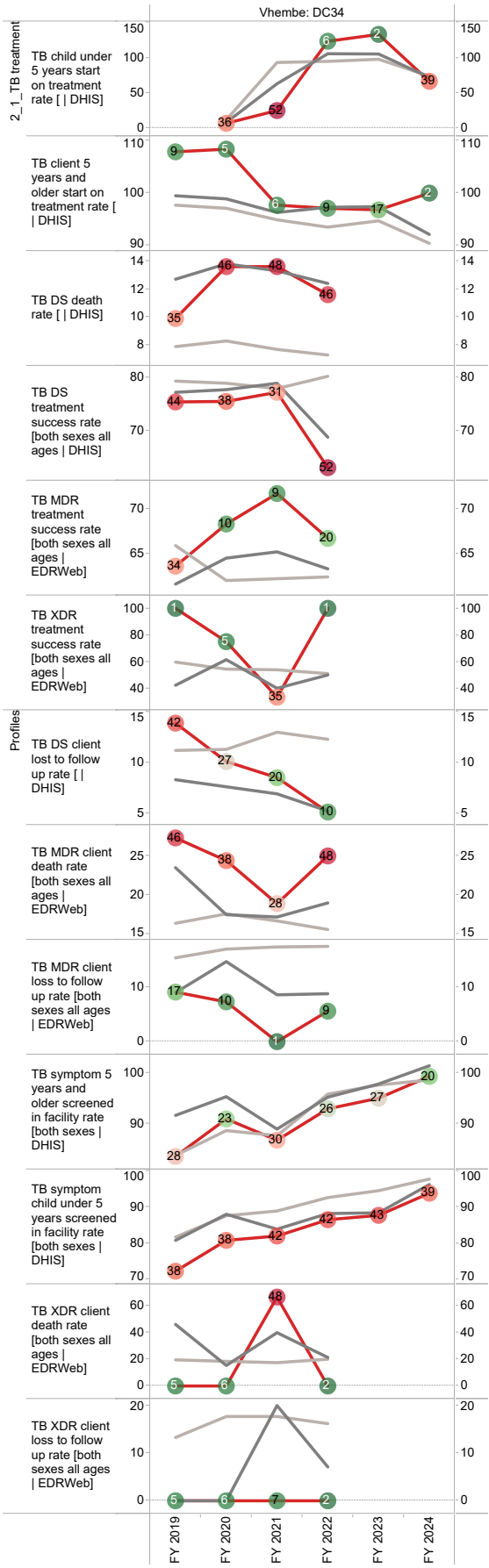
Vhembe

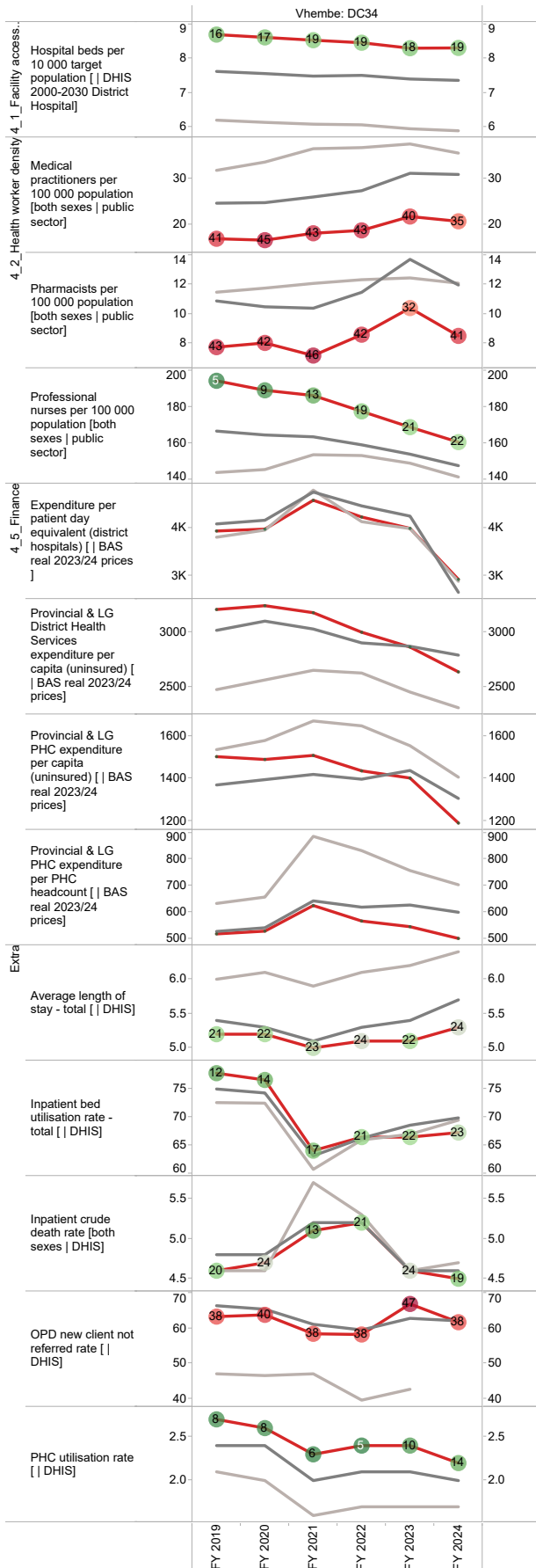


Source: DHIS

Annual trends, 2018/19–2023/24







Measure Names Rank
 1 47
 Prov av
 ZA av
 Ind Value



Capricorn District Municipality (DC35)

The Capricorn District Municipality⁵ is a Category C municipality situated in the Limpopo Province. It forms a gateway to Botswana, Zimbabwe and Mozambique, and consists of the following four local municipalities: Blouberg, Lepelle-Nkumpi, Molemole and Polokwane.

Area: 21 706km²

Population (2023)⁶: 1 361 654

Households⁵: 378 301

Formal dwellings⁵: 93.2%

Cities/Towns:

Blouberg: Alldays, Senwabarwana (Bochum)

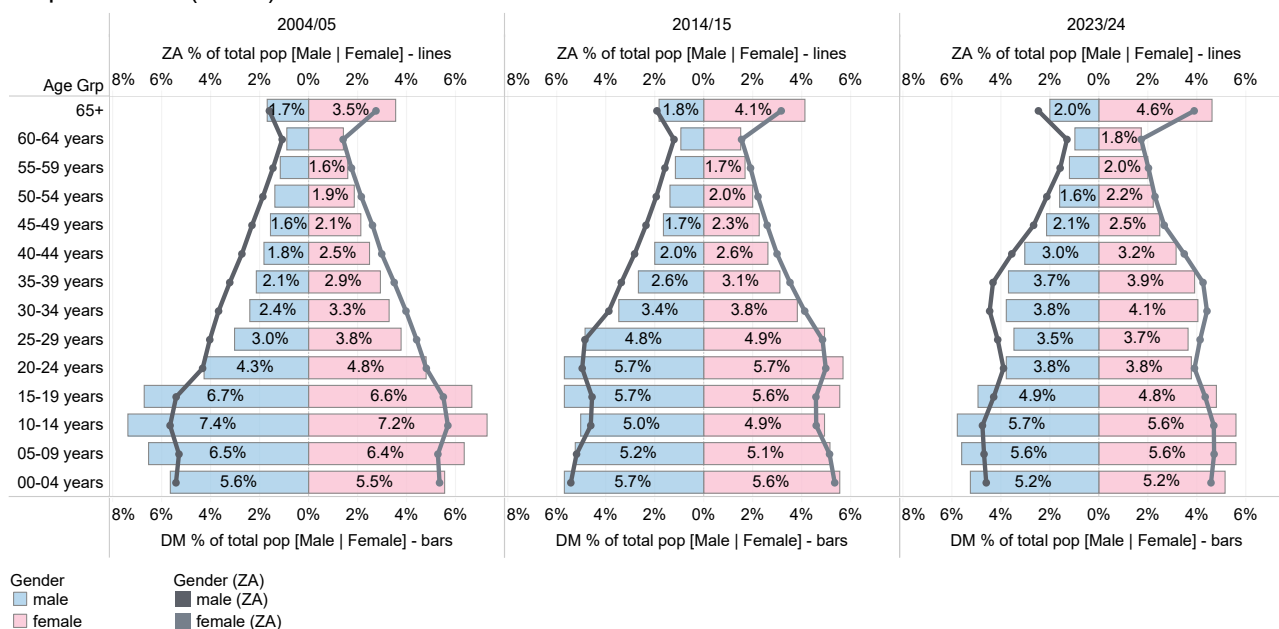
Lepelle-Nkumpi: Zebediela

Molemole: Dendron, Morebeng (Soekmekaar)

Polokwane: Polokwane

District percentage population by age-gender group compared to South Africa

Capricorn DM (DC35)

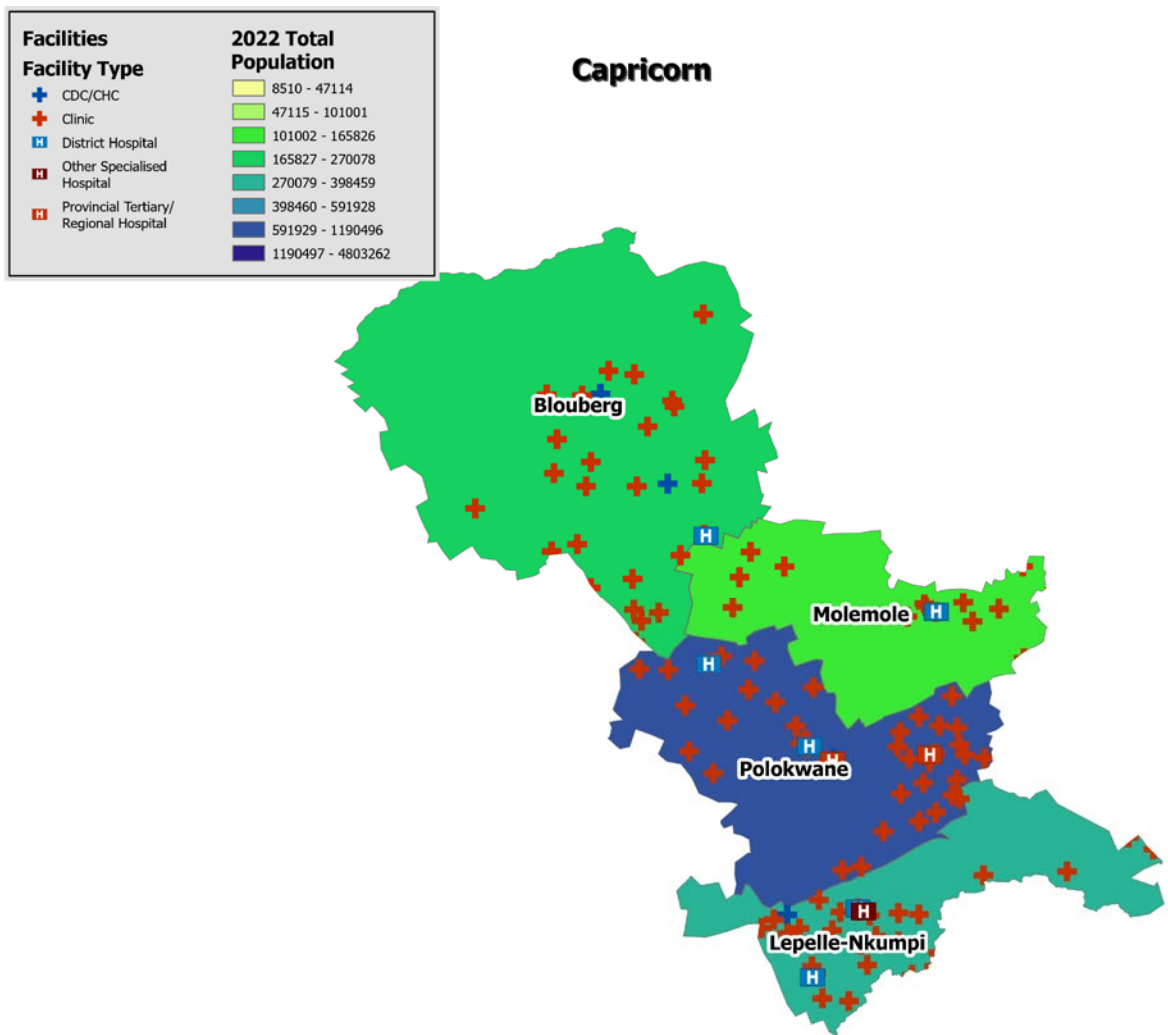


Source: DHIS

5 Local Government Handbook: South Africa 2023. The complete guide to local government in South Africa. Cape Town: Yes Media. 2023. Accessible at: https://issuu.com/yesmedia/docs/localgovernmenthandbook_southafrica2023

6 Mid-year Population Estimates 2023, DHIS.

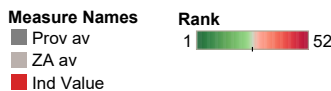
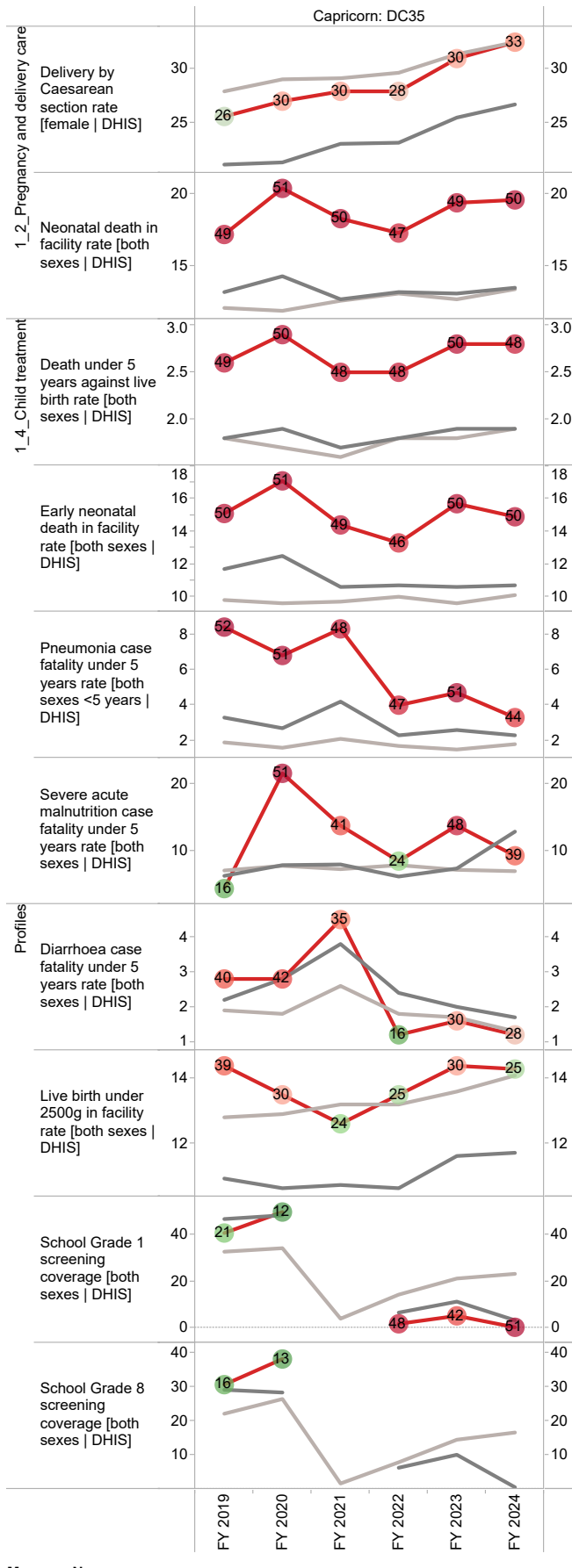
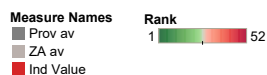
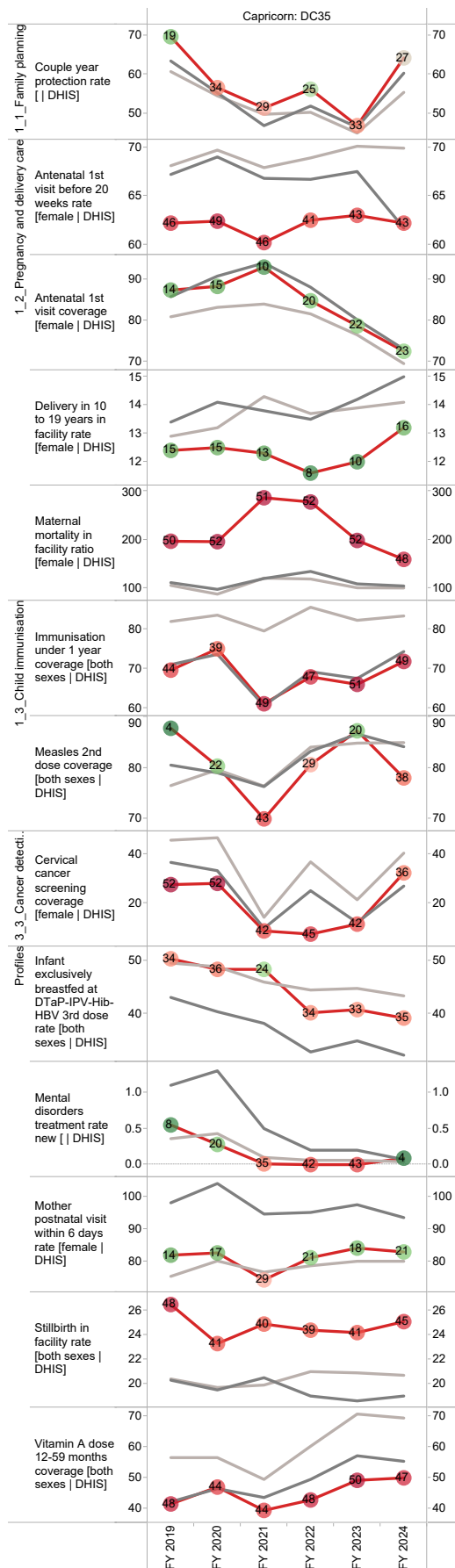
Population distribution, sub-district boundaries and health facility locations

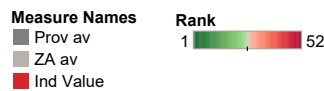
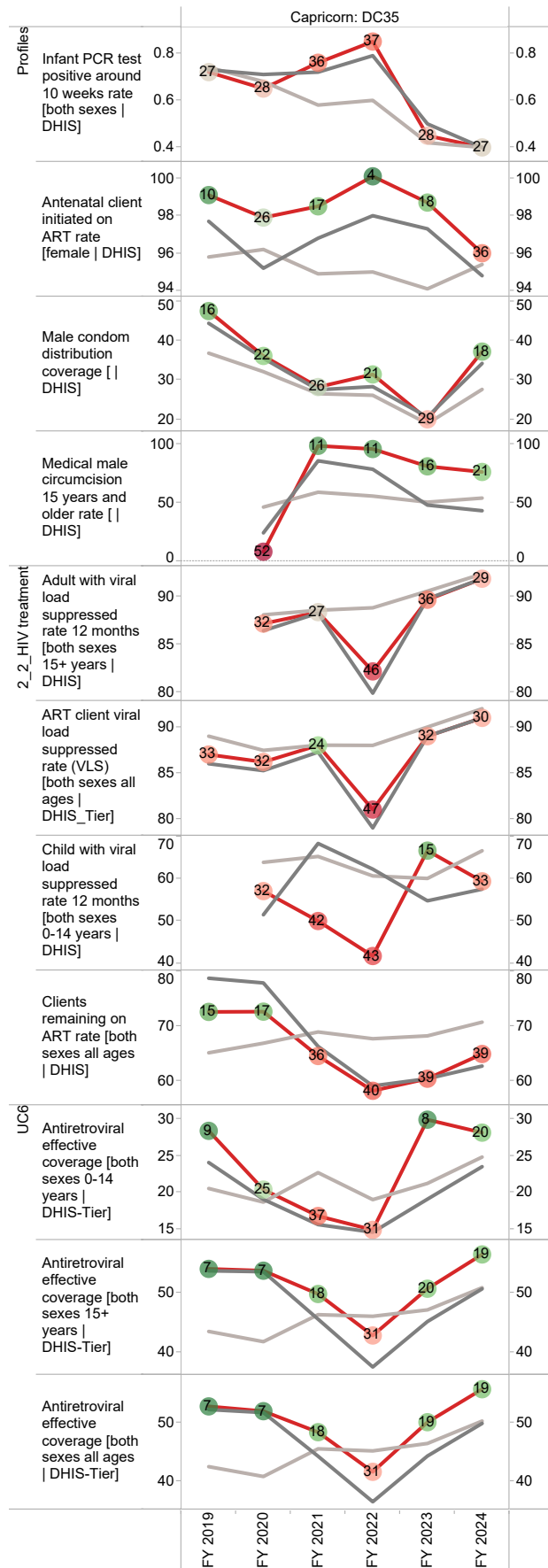
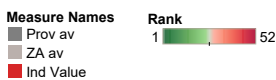
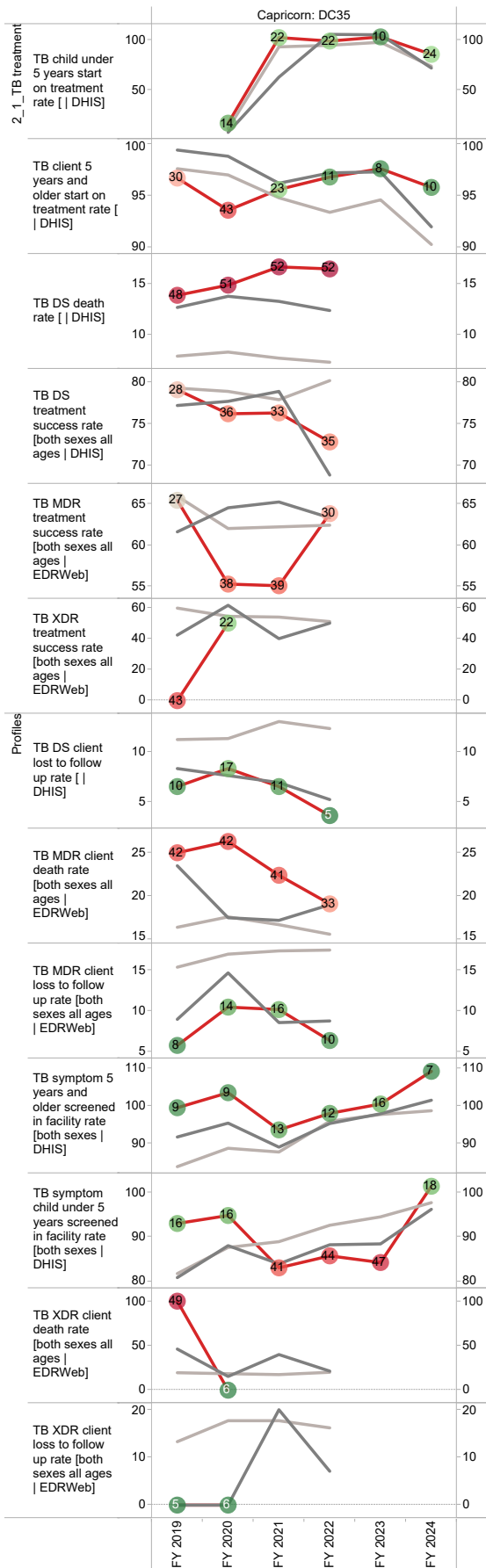


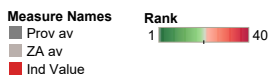
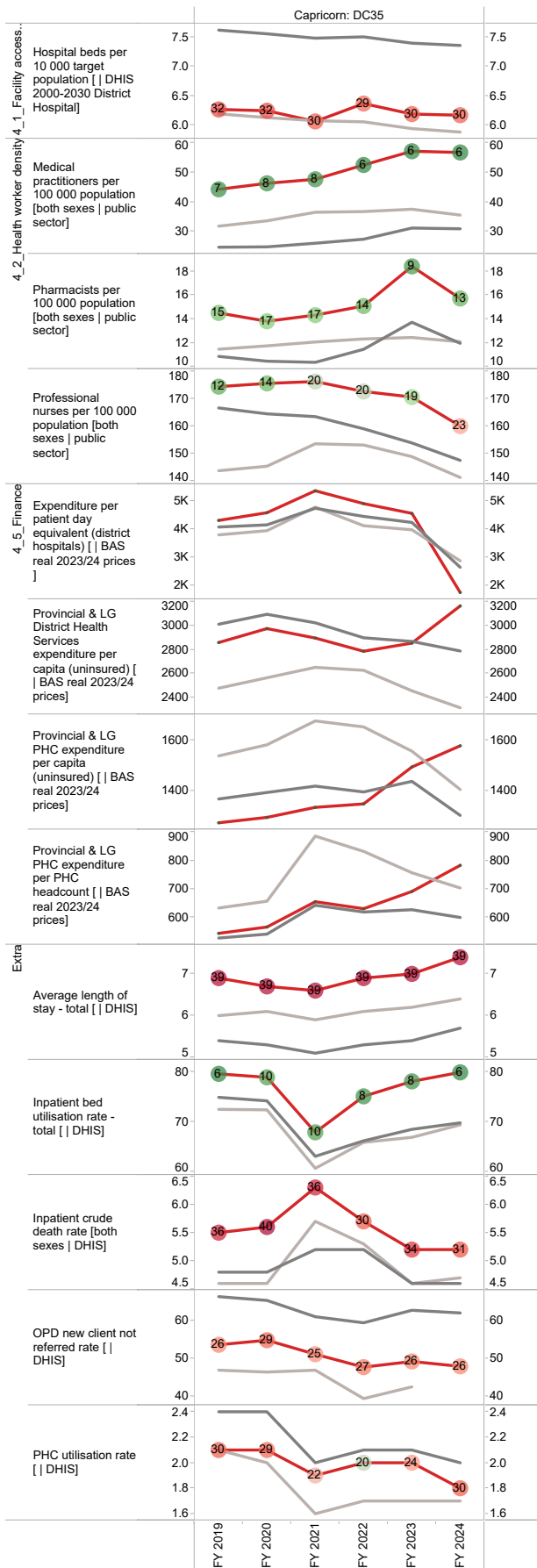
Source: DHIS



Annual trends, 2018/19–2023/24







Waterberg District Municipality (DC36)

The Waterberg District Municipality⁷ is a Category C municipality located in the western part of the Limpopo Province. It shares its five border-control points with Botswana, and comprises five local municipalities: Bela-Bela, Lephalale, Modimolle-Mookgophong, Mogalakwena and Thabazimbi.

Area: 44 914km²

Population (2023)⁸: 786 231

Households⁷: 211 471

Formal dwellings⁷: 85.0%

Cities/Towns:

Bela-Bela: Bela-Bela, Pienaarsrivier

Lephalale: Lephalale

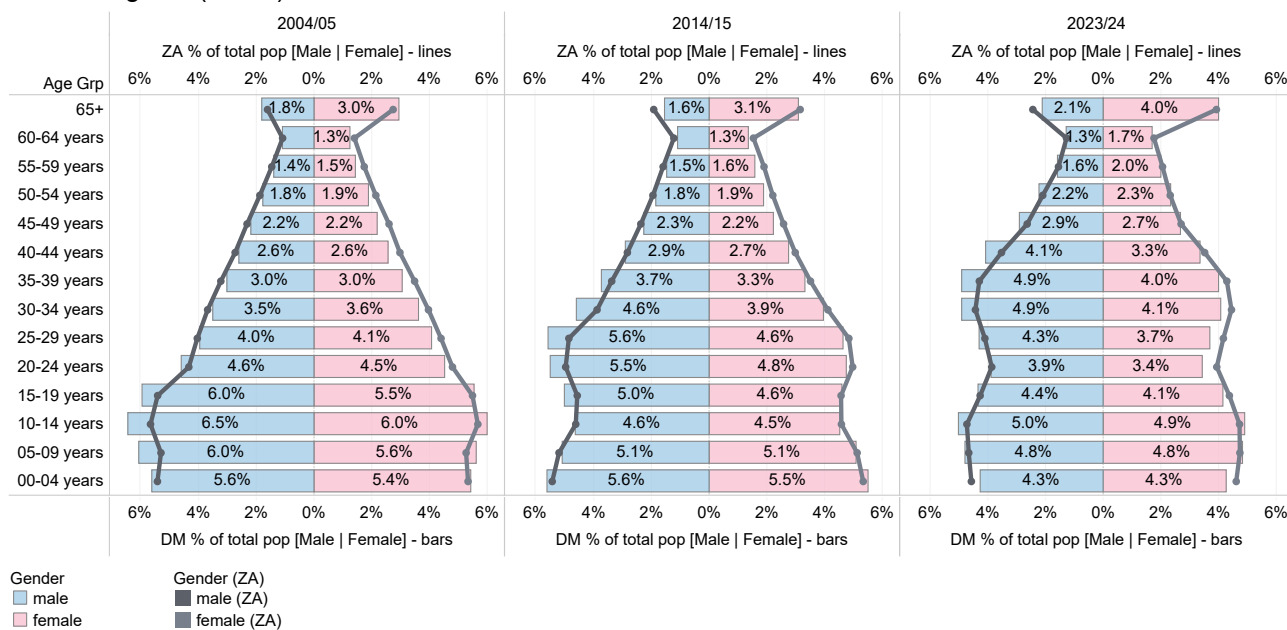
Modimolle-Mookgophong: Modimolle, Mookgophong (Naboomspruit), Vaalwater

Mogalakwena: Mokopane (Potgietersrus)

Thabazimbi: Amandelbult Mine Town, Thabazimbi

District percentage population by age-gender group compared to South Africa

Waterberg DM (DC36)



Source: DHIS

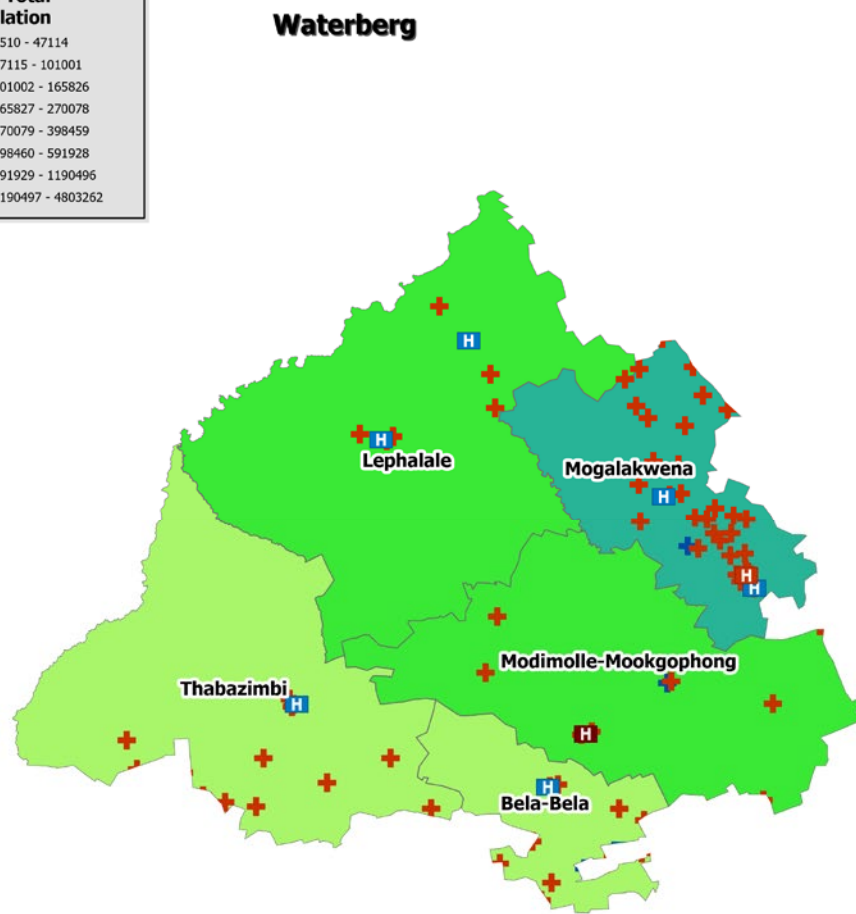
7 Local Government Handbook: South Africa 2023. The complete guide to local government in South Africa. Cape Town: Yes Media. 2023. Accessible at: https://issuu.com/yesmedia/docs/localgovernmenthandbook_southafrica2023

8 Mid-year Population Estimates 2023, DHIS.



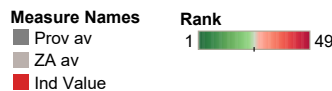
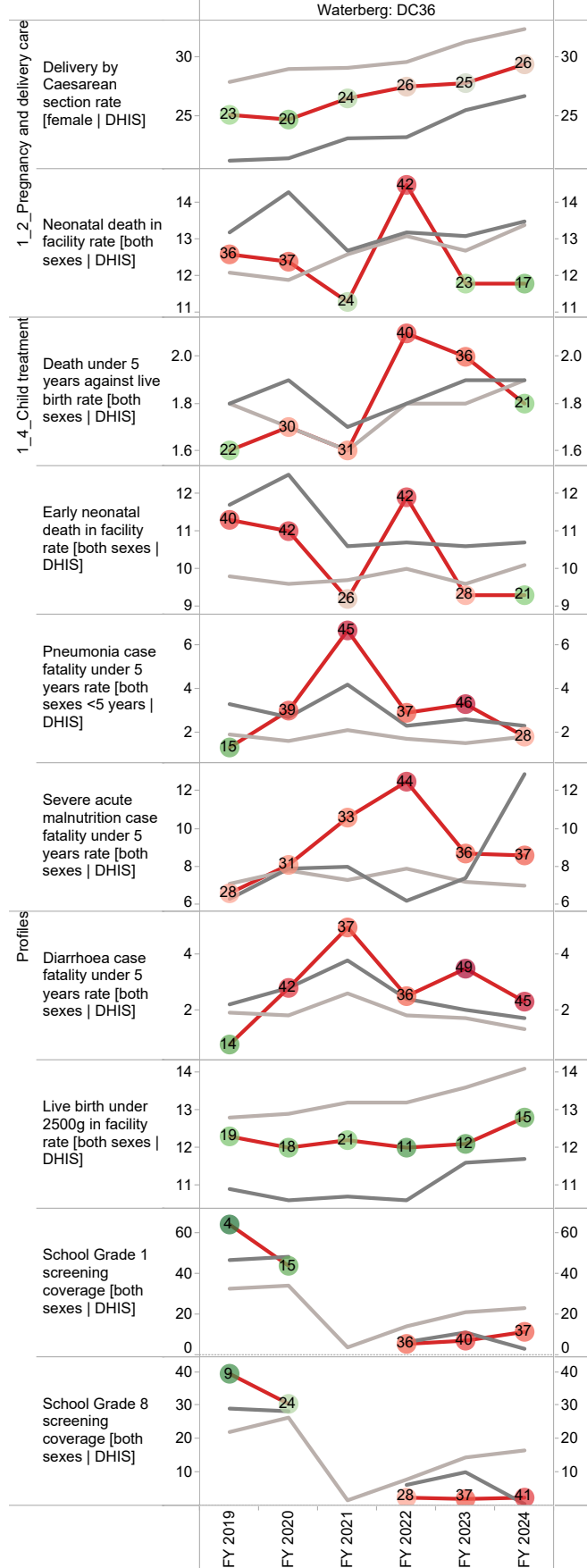
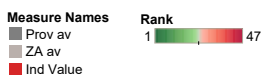
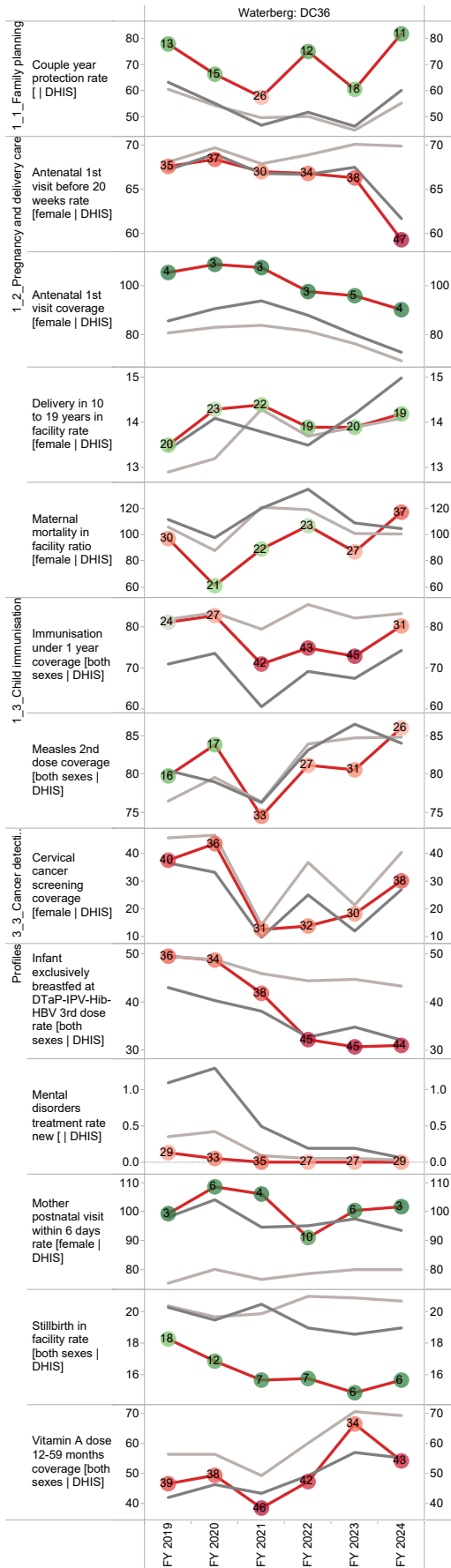
Population distribution, sub-district boundaries and health facility locations

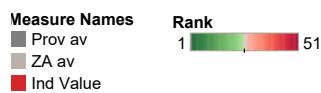
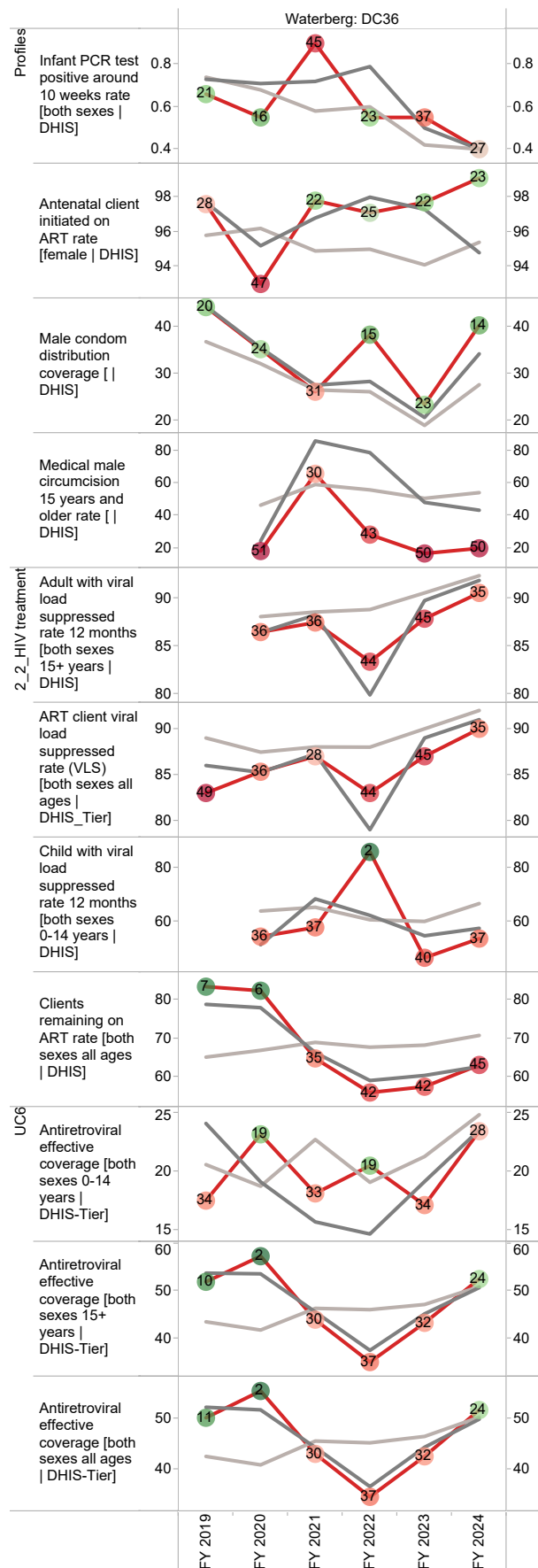
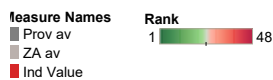
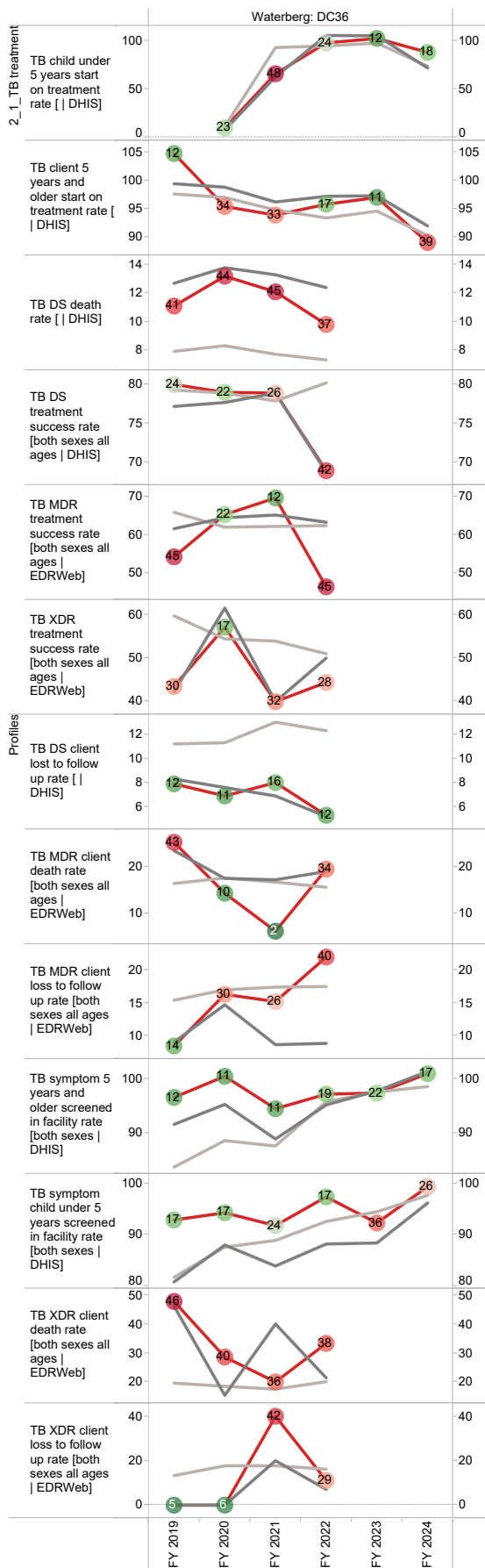
Facilities	2022 Total Population
CDC/CHC	8510 - 47114
Clinic	47115 - 101001
District Hospital	101002 - 165826
Other Specialised Hospital	165827 - 270078
Provincial Tertiary/Regional Hospital	270079 - 398459

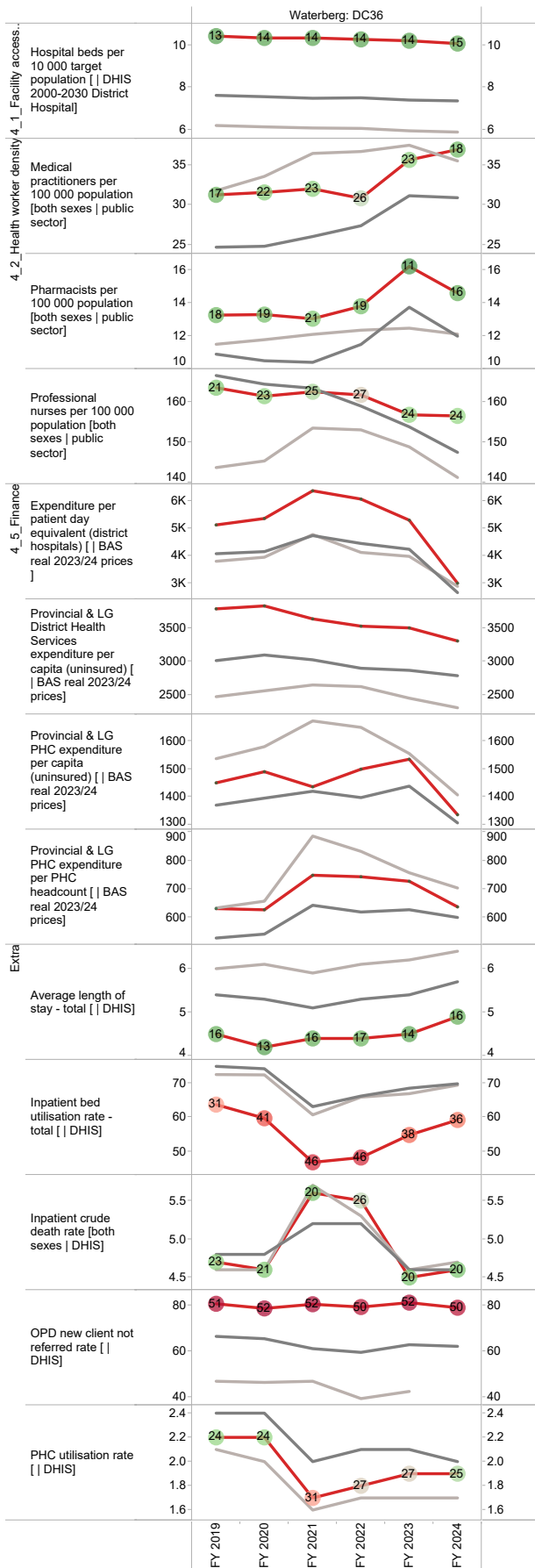


Source: DHIS

Annual trends, 2018/19–2023/24







Measure Names Rank
 1 52
 Prov av
 ZA av
 Ind Value



Sekhukhune District Municipality (DC47)

The Sekhukhune District Municipality⁹ is a Category C municipality located in the Limpopo Province, the northernmost part of South Africa. The district is the smallest in the province, making up 11% of its geographical area. It comprises four local municipalities: Elias Motsoaledi, Ephraim Mogale, Makhuduthamaga and Fetakgomo Tubatse.

Area: 13 527km²

Population (2023)¹⁰: 1 261 291

Households⁹: 290 527

Formal dwellings⁹: 87.6%

Cities/Towns:

Elias Motsoaledi: Groblersdal, Roosenekal

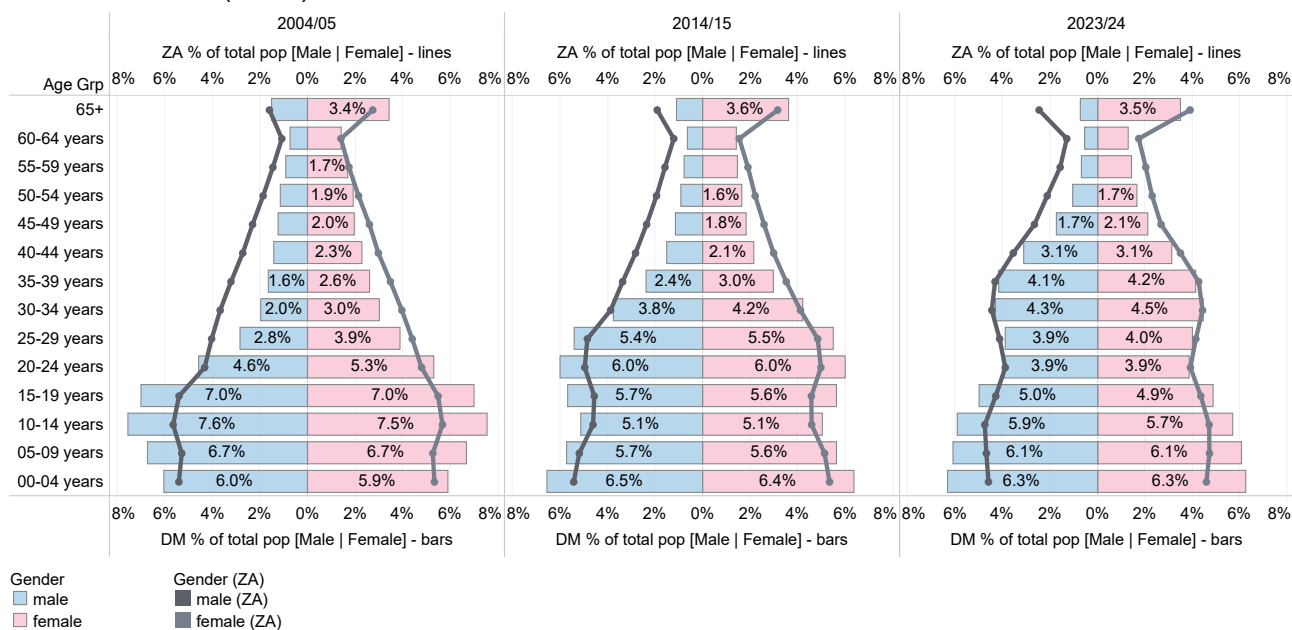
Ephraim Mogale: Marble Hall, Schuinsdraai Nature Reserve

Makhuduthamaga: Makhuduthamaga

Fetakgomo Tubatse: Burgersfort, Ohrigstad, Steelpoort

District percentage population by age-gender group compared to South Africa

Sekhukhune DM (DC47)

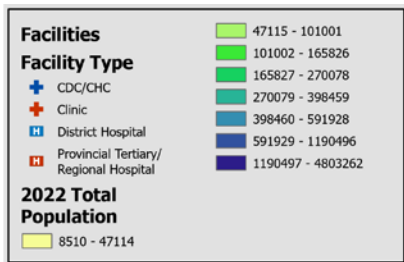


Source: DHIS

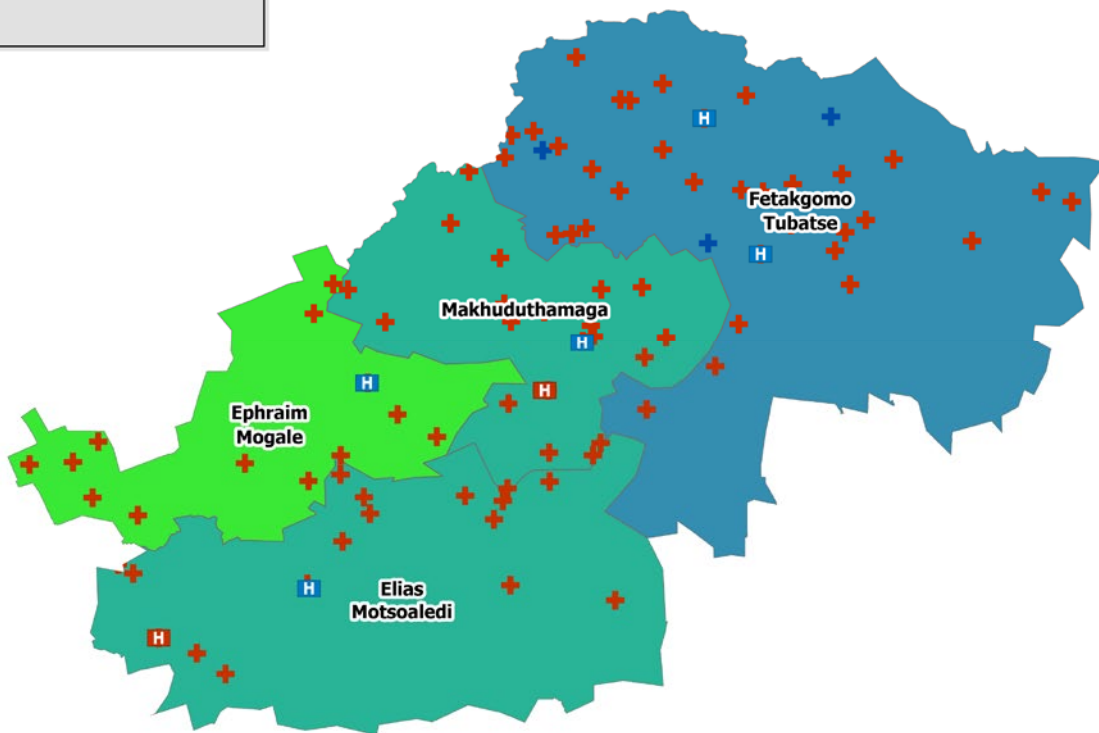
9 Local Government Handbook: South Africa 2023. The complete guide to local government in South Africa. Cape Town: Yes Media. 2023. Accessible at: https://issuu.com/yesmedia/docs/localgovernmenthandbook_southafrica2023

10 Mid-year Population Estimates 2023, DHIS.

Population distribution, sub-district boundaries and health facility locations



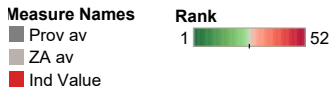
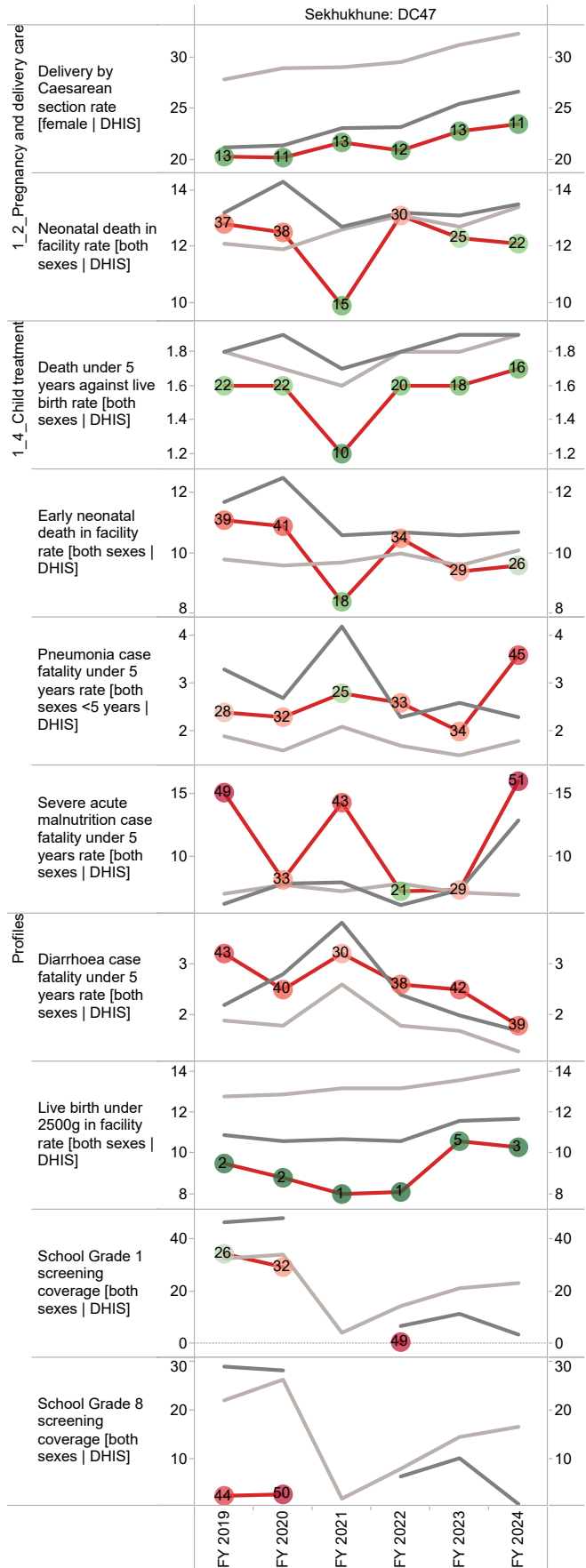
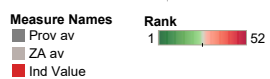
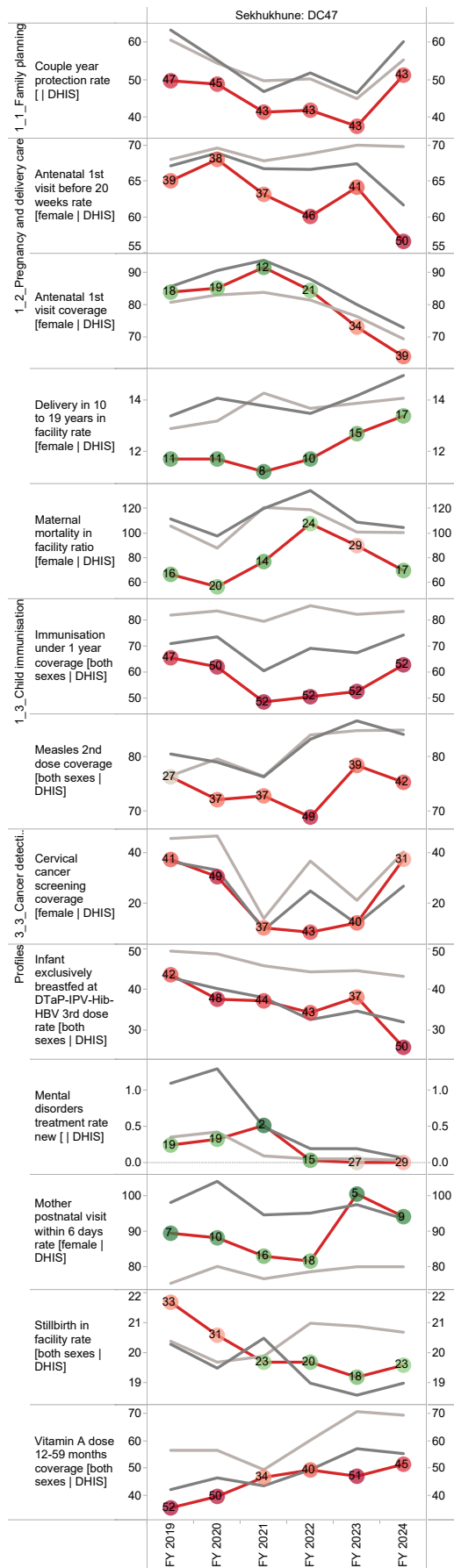
Sekhukhune

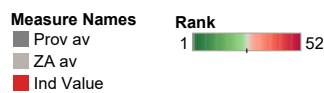
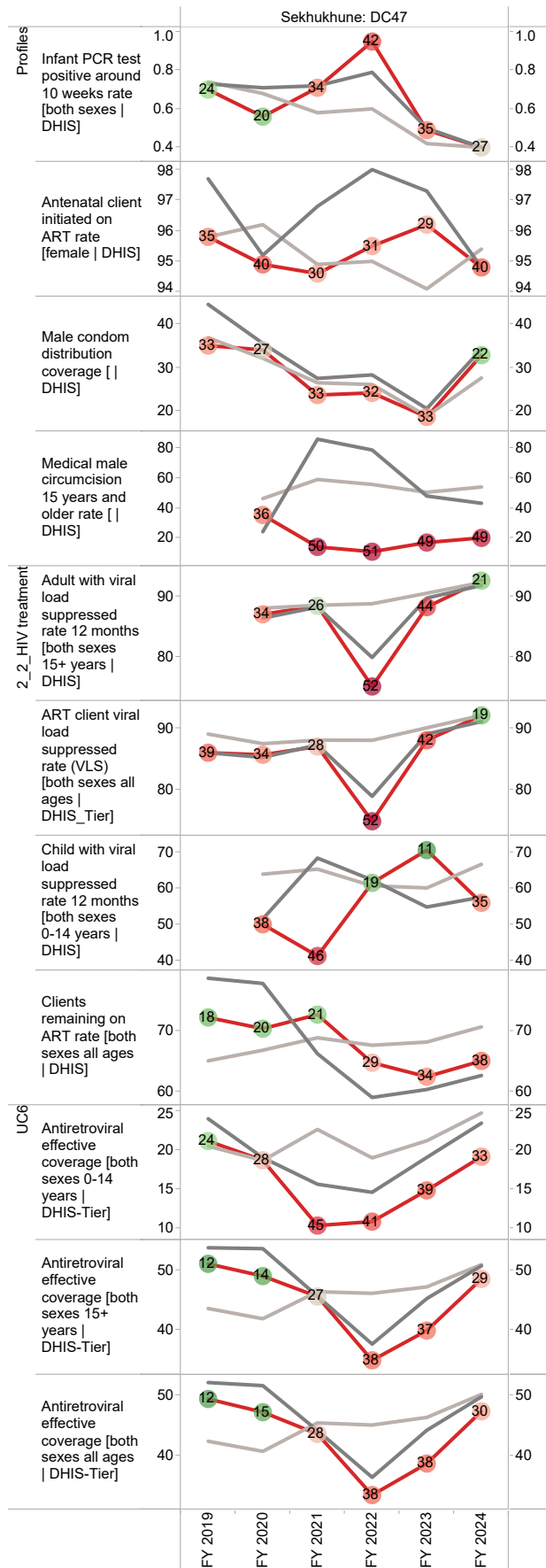
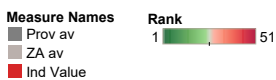
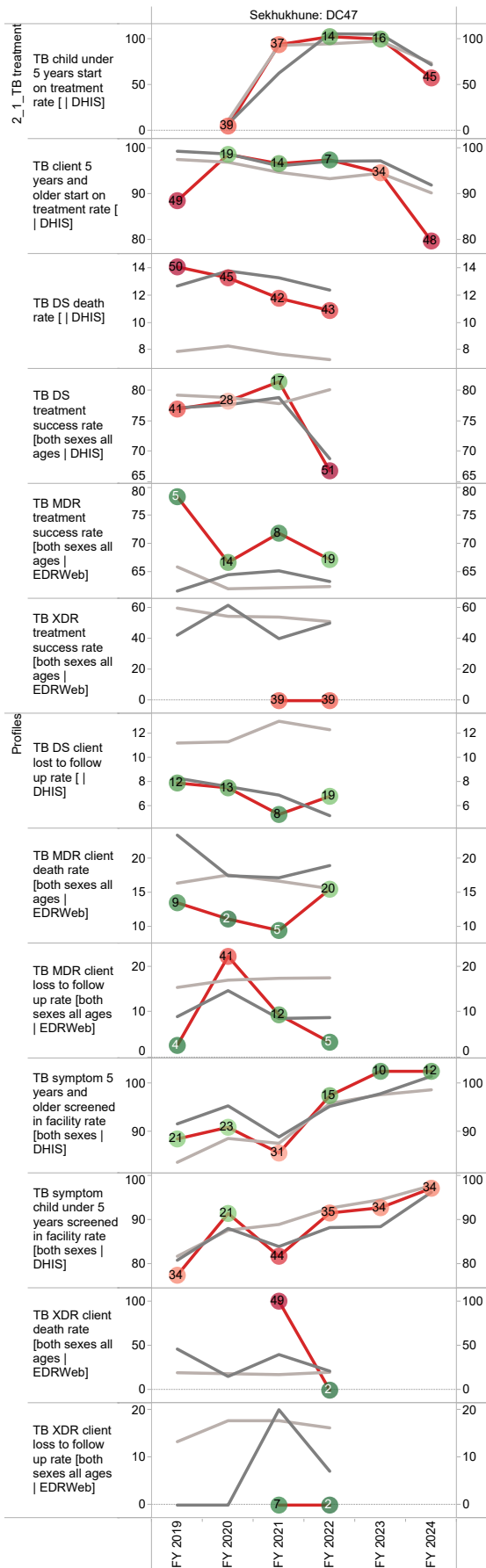


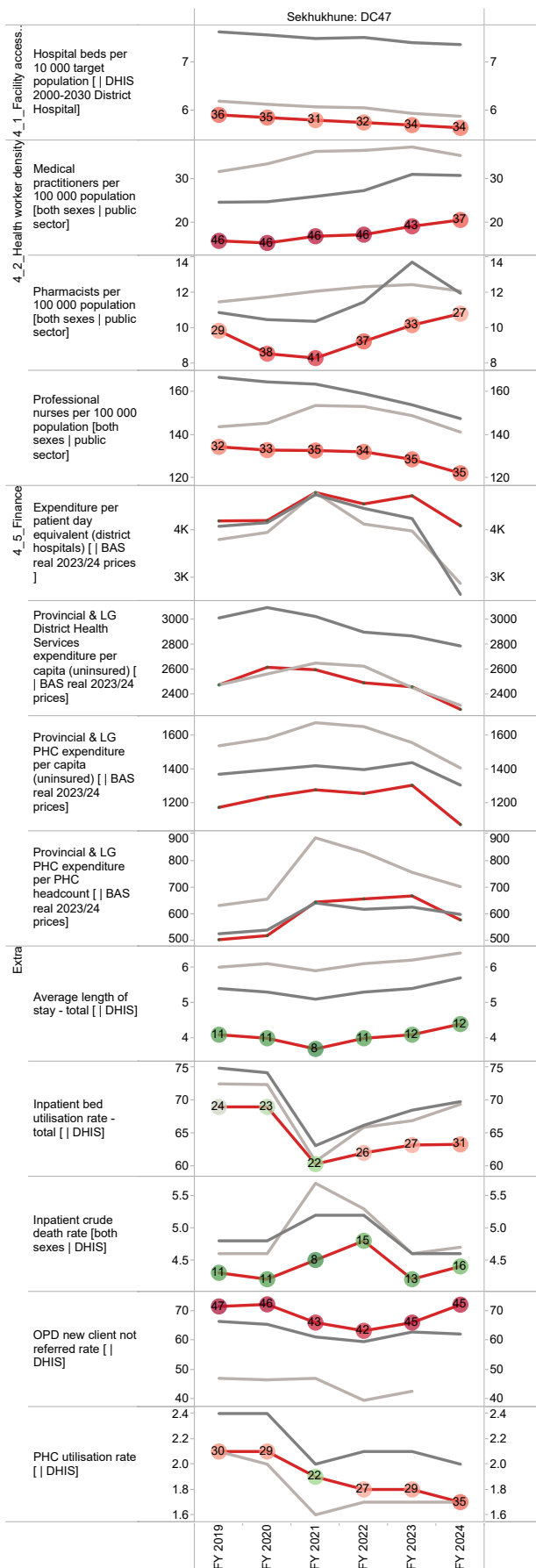
Source: DHIS



Annual trends, 2018/19–2023/24







Measure Names Rank
 ■ Prov av
 ■ ZA av
 ■ Ind Value