

# 14 Eastern Cape Province

## Buffalo City Metropolitan Municipality (BUF)

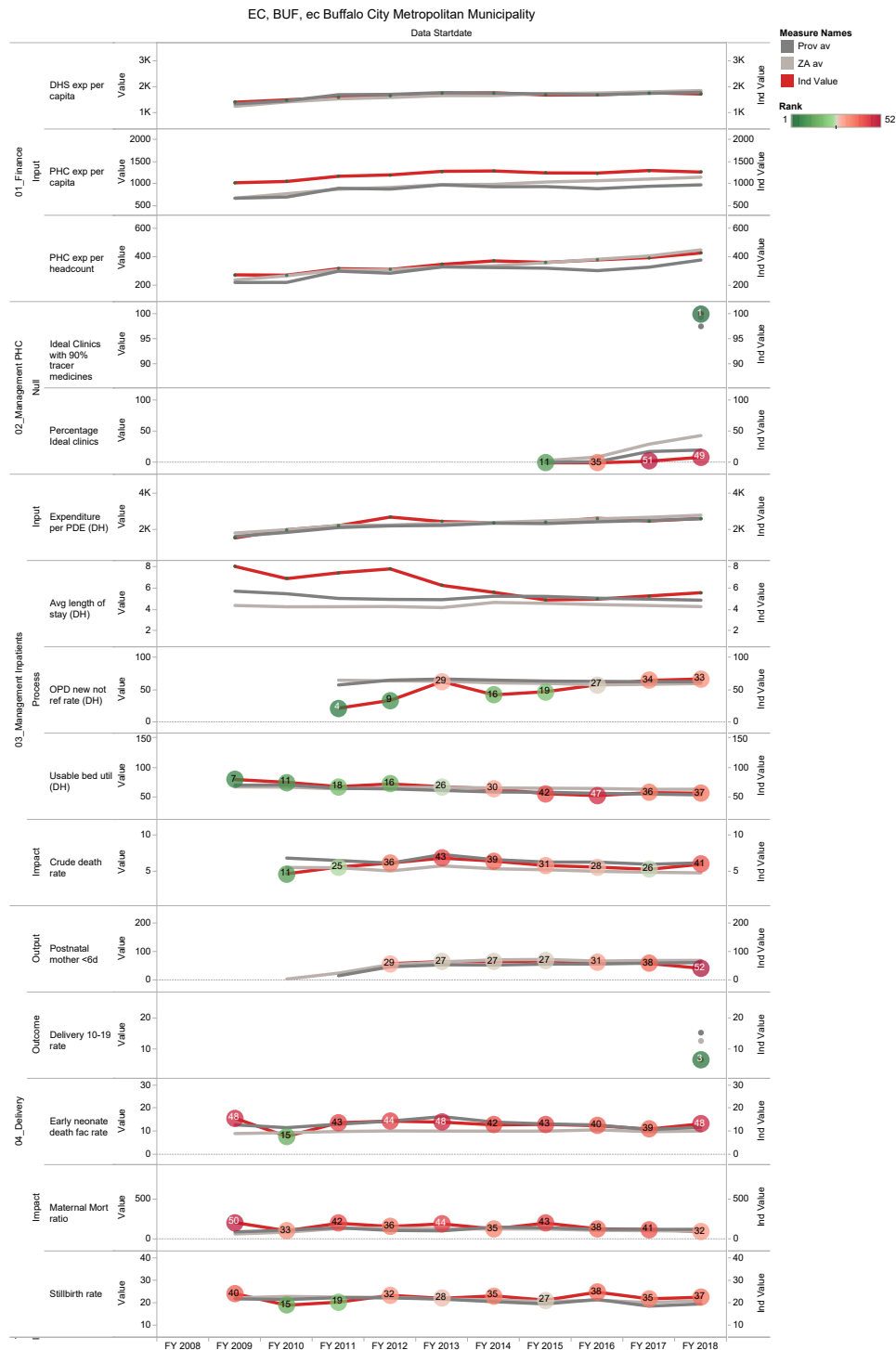
The Buffalo City Metropolitan Municipality<sup>a</sup> is a Category A municipality situated on the east coast of the Eastern Cape Province.

Population (2016)<sup>b</sup>: 836 931

Population density (2016): 304.3 persons per km<sup>2</sup>

Estimated medical scheme coverage: 17.4%

### Annual trends, 2008/09 – 2017/18

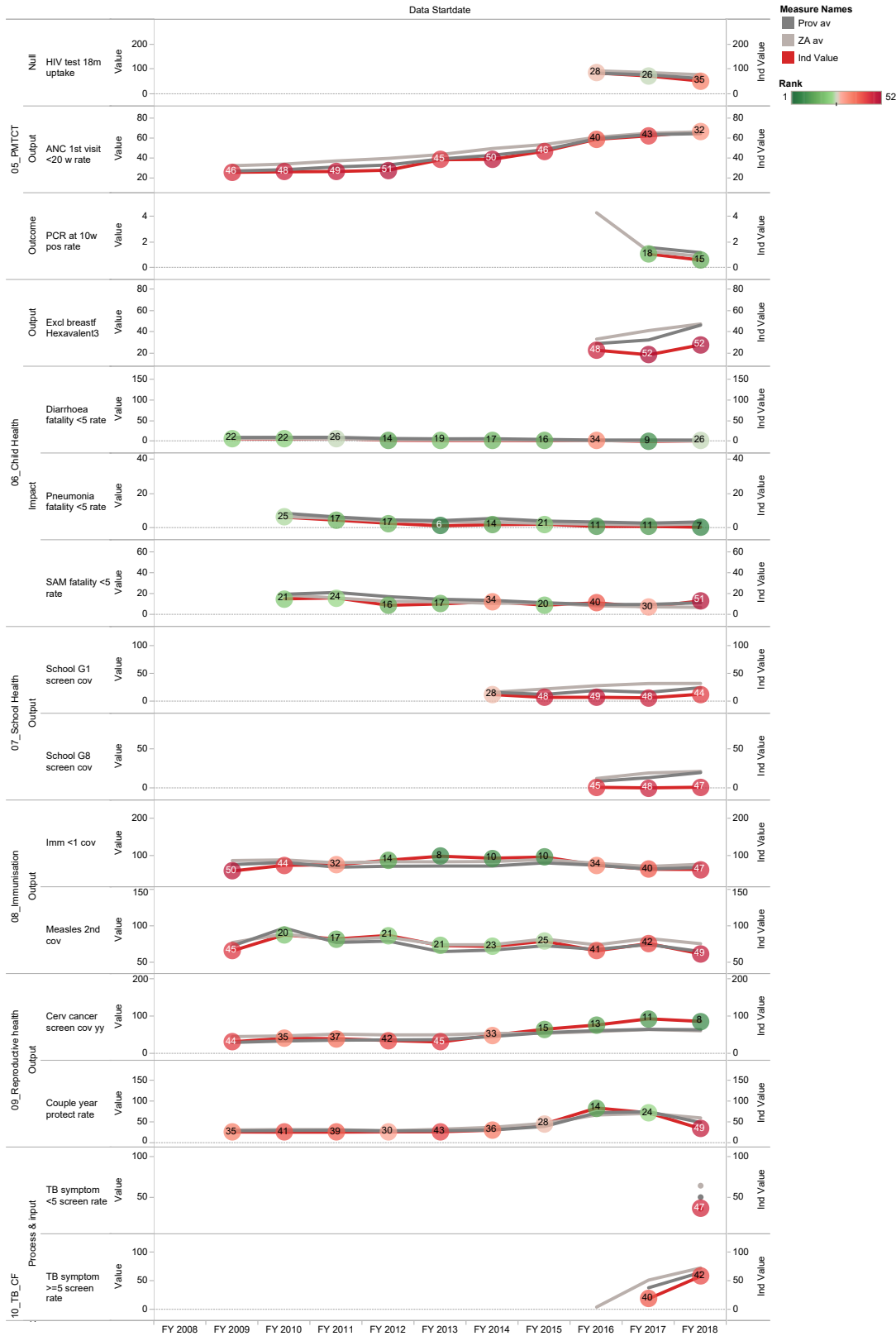


a The Local Government Handbook South Africa 2017. A complete guide to municipalities in South Africa. Seventh edition. Accessible at: [www.municipalities.co.za](http://www.municipalities.co.za).

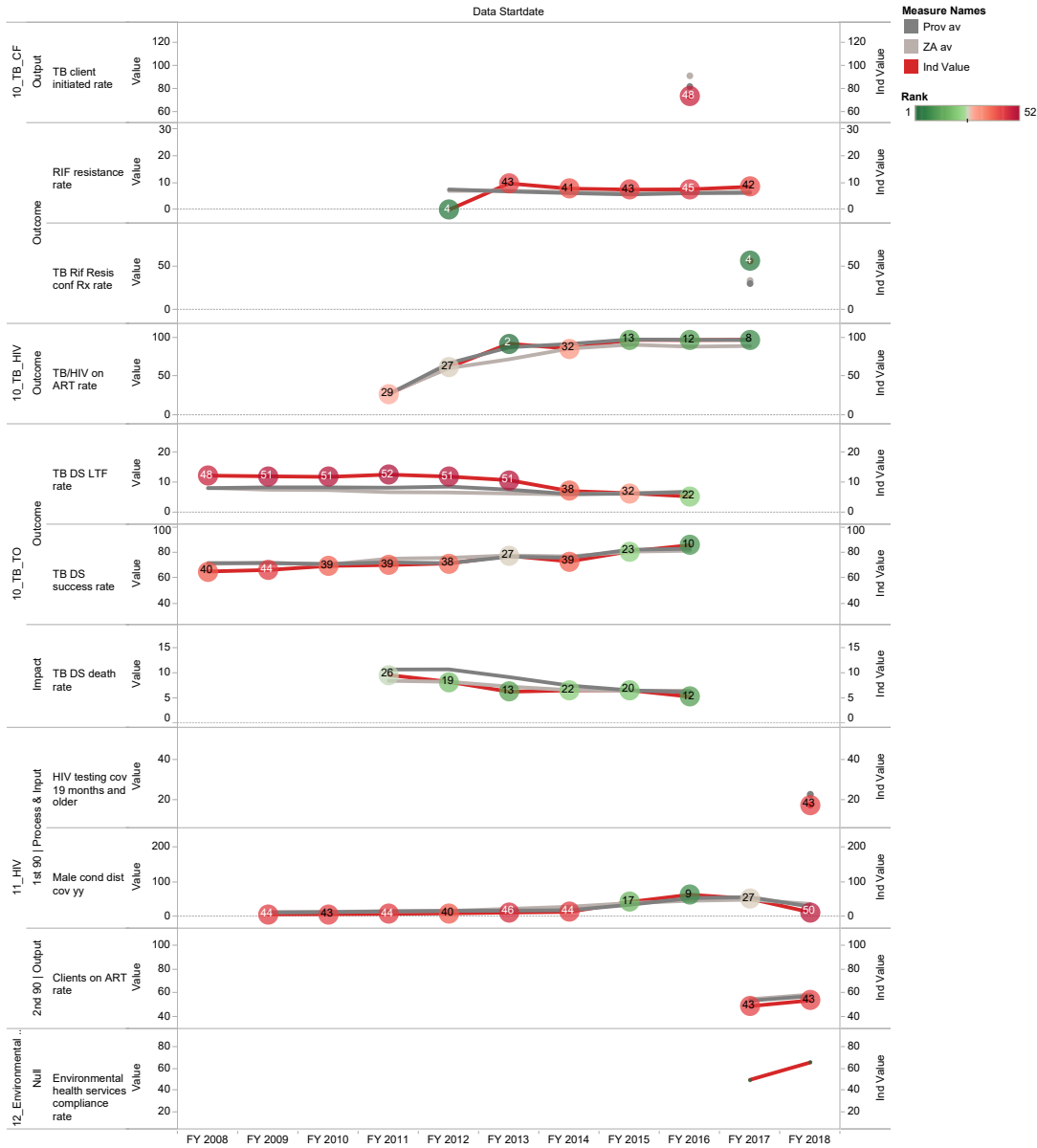
b Mid-Year Population Estimates 2016, Stats SA.

## Section B: Profile Eastern Cape Province

EC, BUF, ec Buffalo City Metropolitan Municipality



EC, BUF, ec Buffalo City Metropolitan Municipality



## Sarah Baartman District Municipality (DC10)

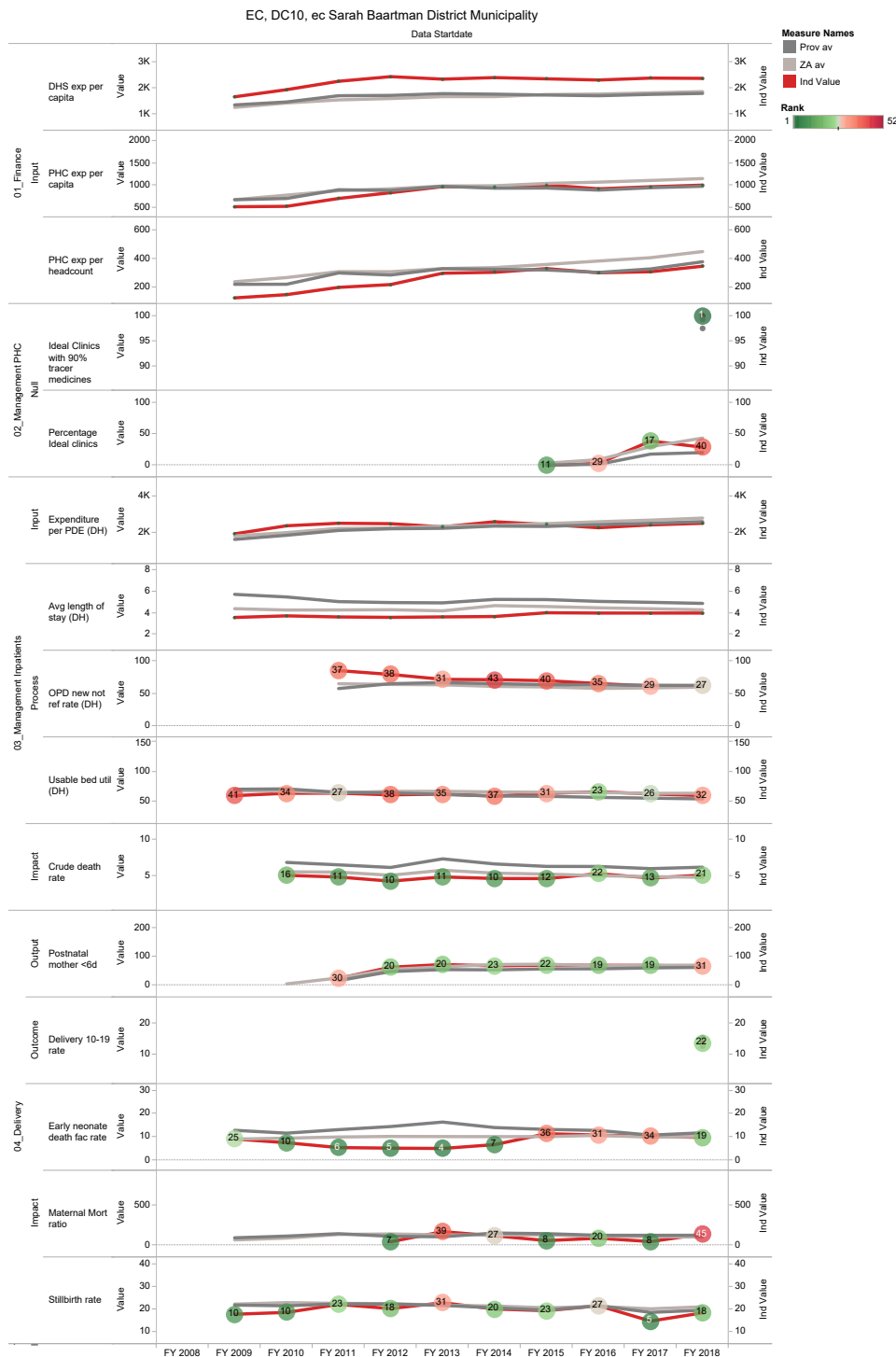
The Sarah Baartman District Municipality<sup>c</sup> (previously Cacadu District Municipality) is a Category C municipality situated in the Eastern Cape Province. It comprises seven local municipalities: Dr Beyers Naudé, Blue Crane Route, Makana, Ndlambe, Sundays River Valley, Kouga and Koukamma.

Population (2016)<sup>d</sup>: 508 859

Population density (2016): 8.7 people per km<sup>2</sup>

Estimated medical scheme coverage: 9.0%

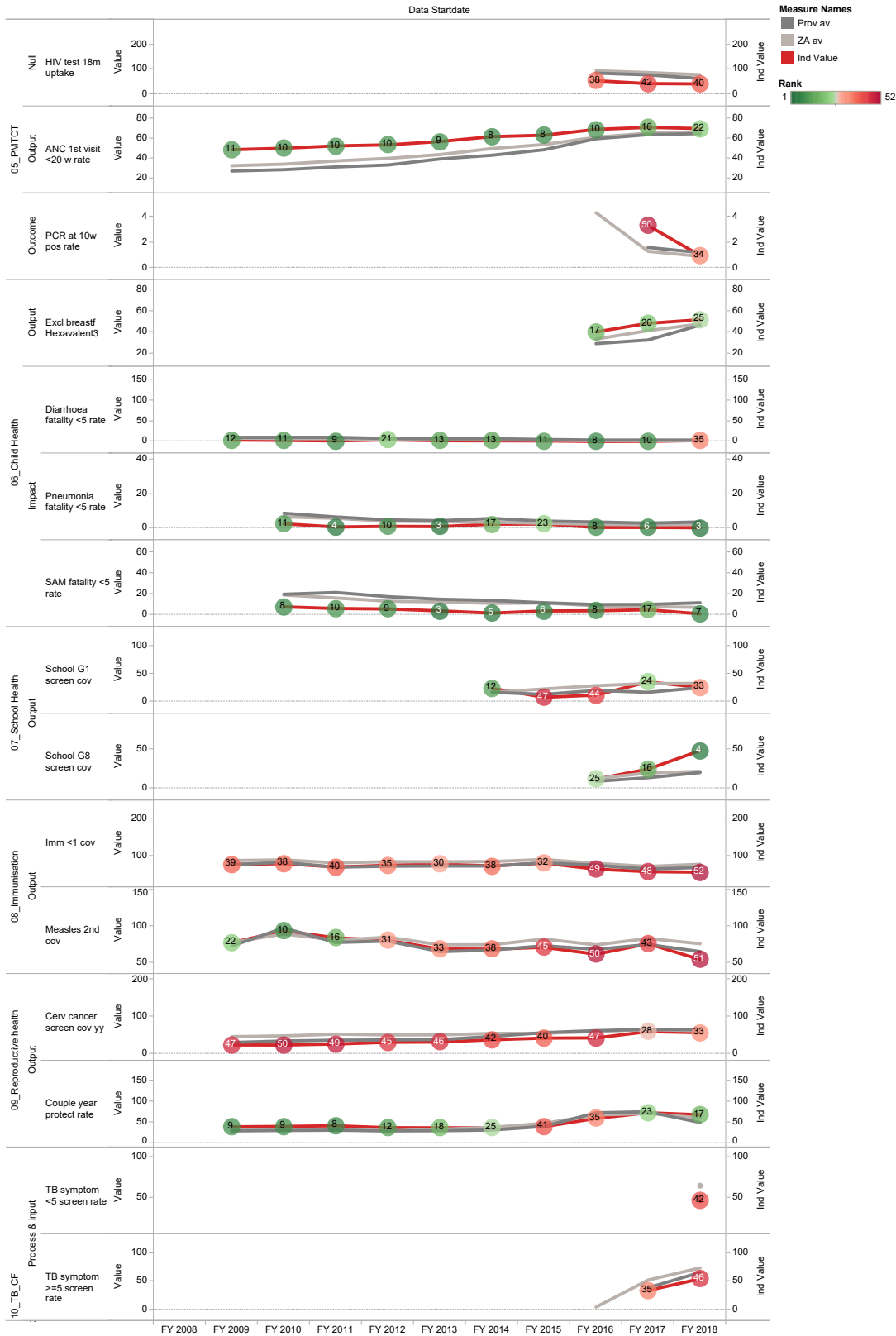
### Annual trends, 2008/09 – 2017/18



<sup>c</sup> The Local Government Handbook South Africa 2017. A complete guide to municipalities in South Africa. Seventh edition. Accessible at: [www.municipalities.co.za](http://www.municipalities.co.za).

<sup>d</sup> Mid-Year Population Estimates 2016, Stats SA.

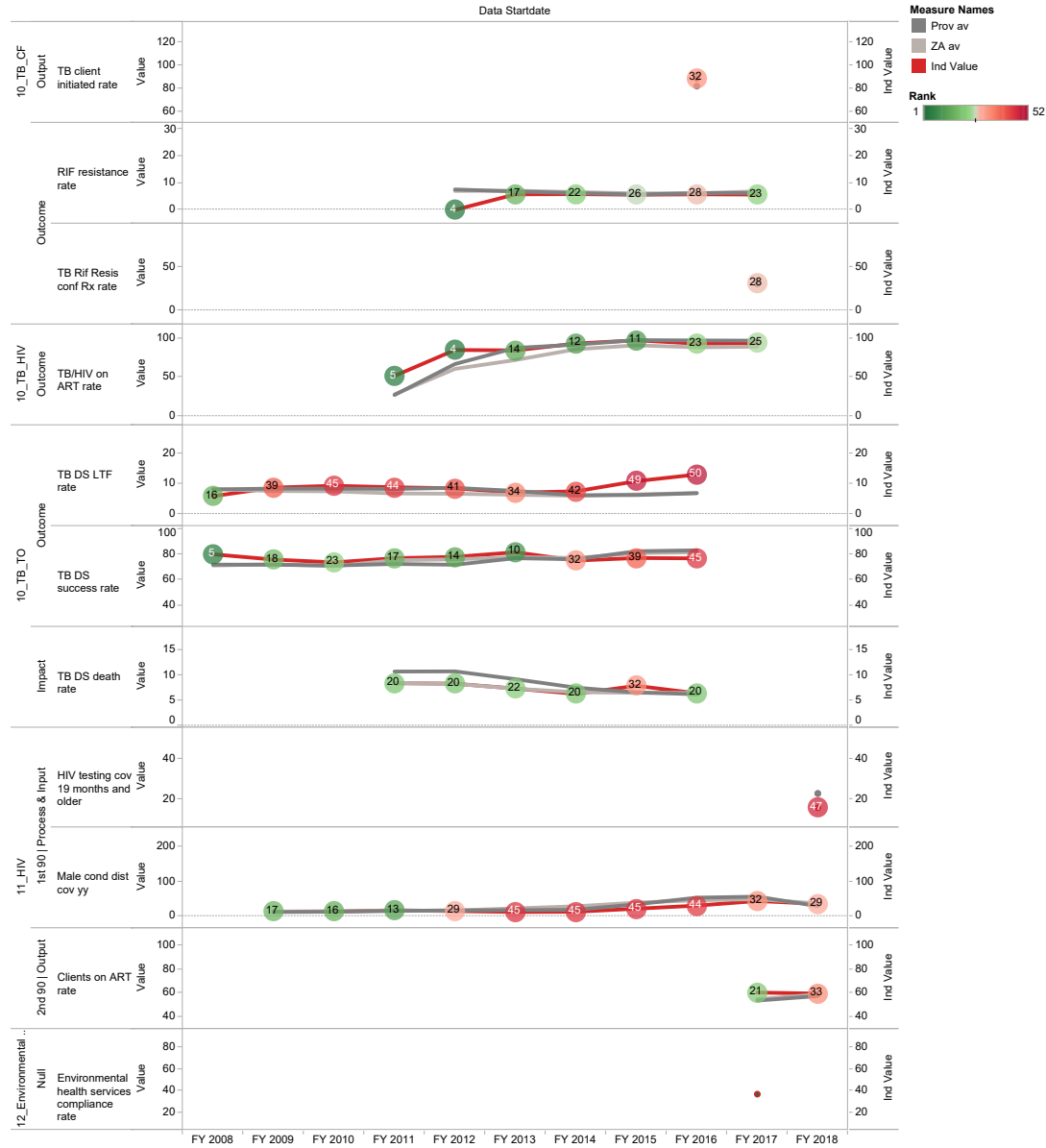
EC, DC10, ec Sarah Baartman District Municipality



## Section B: Profile Eastern Cape Province

EC, DC10, ec Sarah Baartman District Municipality

Data Startdate



## Amathole District Municipality (DC12)

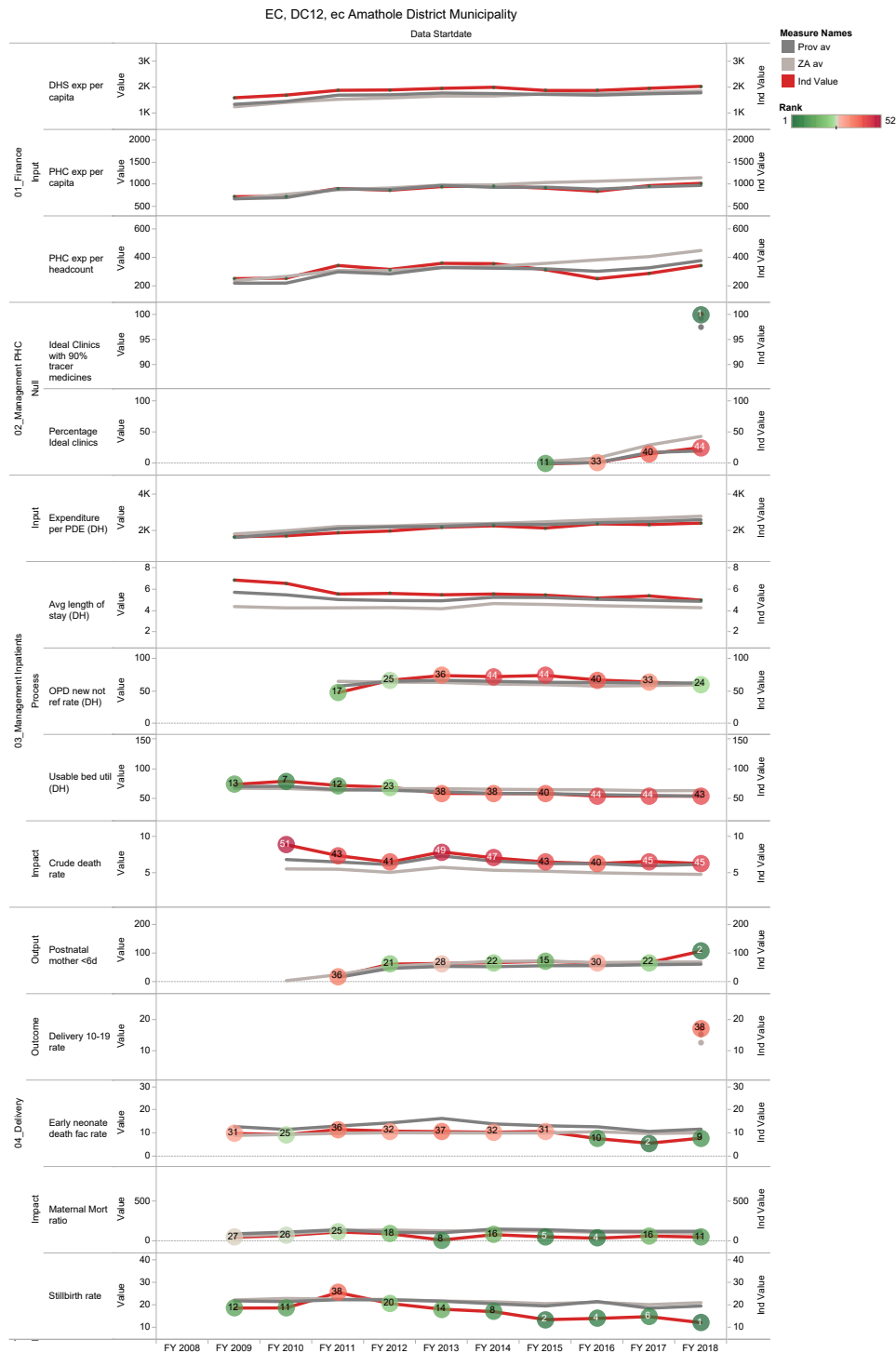
The Amathole District Municipality<sup>e</sup> is a Category C municipality situated in the central part of the Eastern Cape. The municipality comprises six local municipalities: Mbhashe, Mnquma, Great Kei, Amahlathi, Ngqushwa and Raymond Mhlaba.

Population (2016)<sup>f</sup>: 98 2451

Population density (2016): 46.5 persons per km<sup>2</sup>

Estimated medical scheme coverage: 5.1%

### Annual trends, 2008/09 – 2017/18



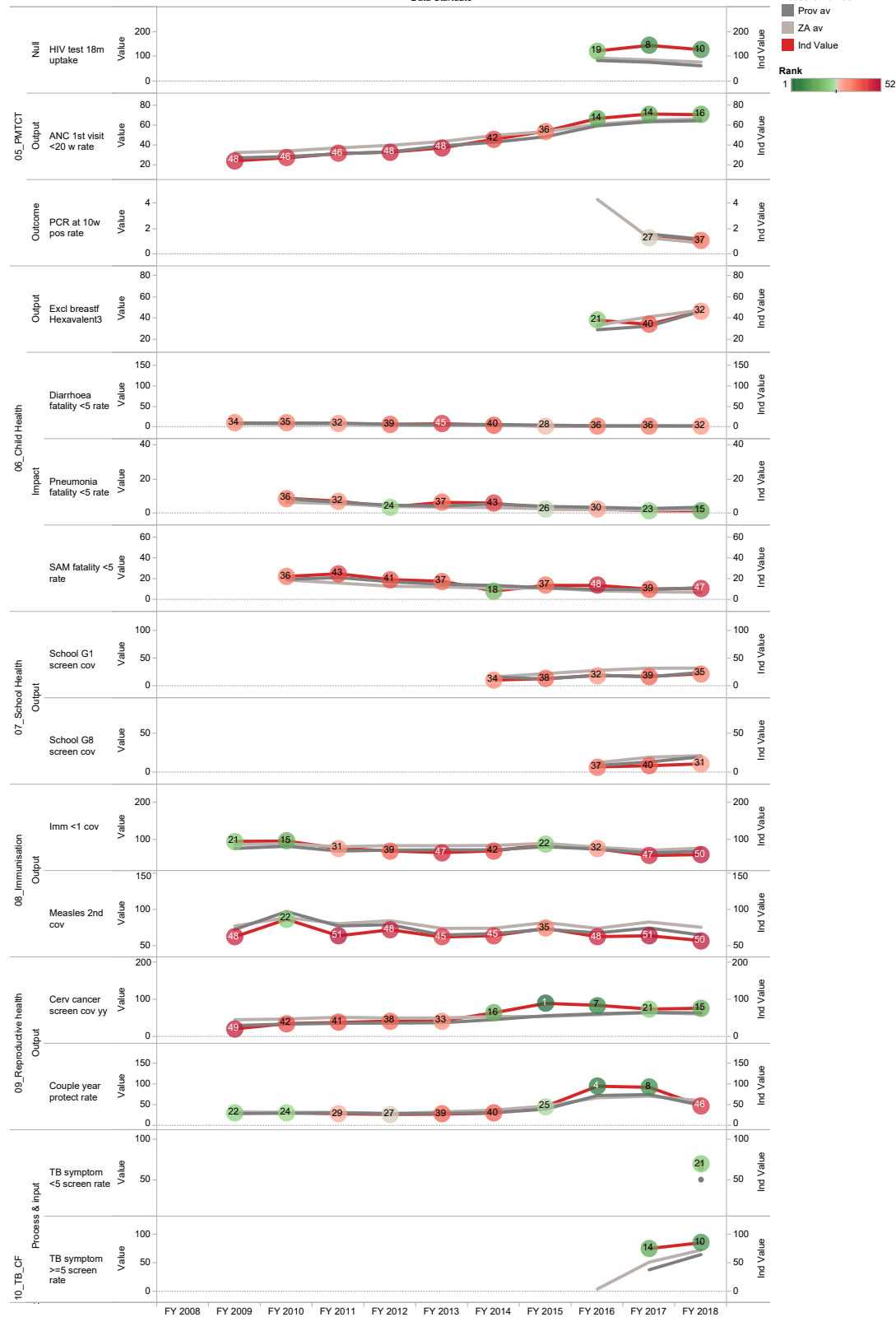
e The Local Government Handbook South Africa 2017. A complete guide to municipalities in South Africa. Seventh edition. Accessible at: [www.municipalities.co.za](http://www.municipalities.co.za).

f Mid-Year Population Estimates 2016, Stats SA.

## Section B: Profile Eastern Cape Province

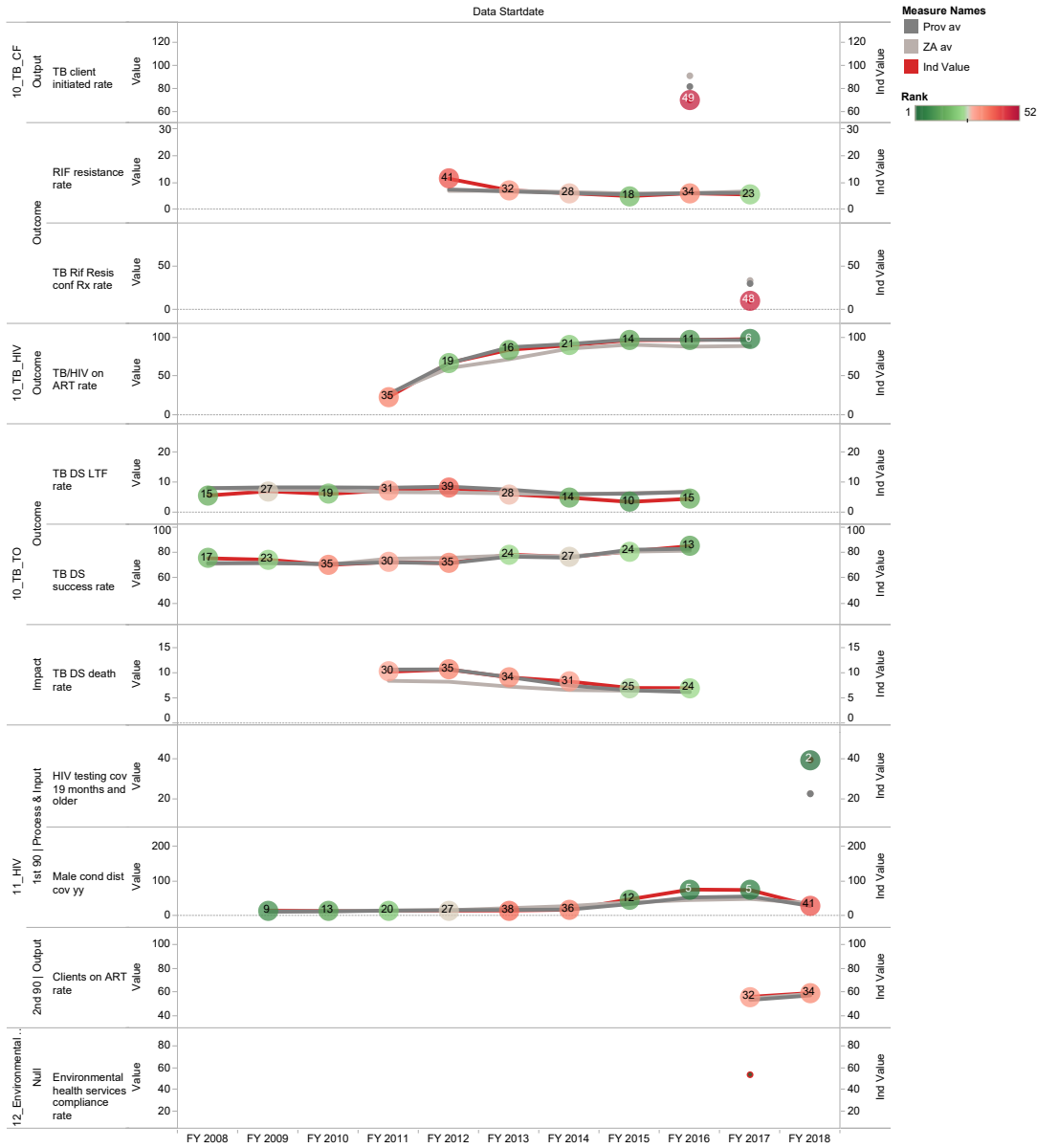
### EC, DC12, ec Amathole District Municipality

Data Startdate





EC, DC12, ec Amathole District Municipality



## Chris Hani District Municipality (DC13)

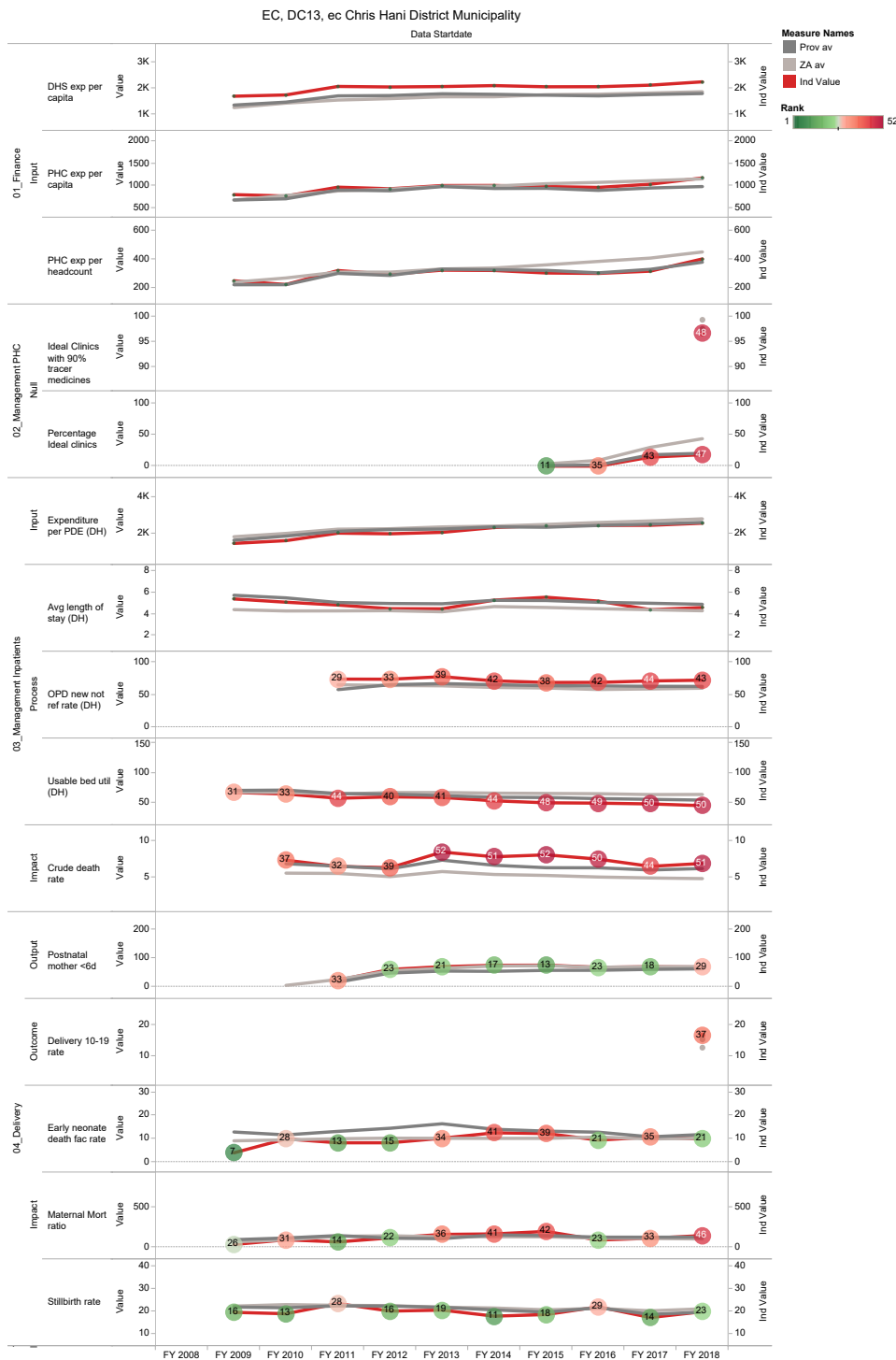
The Chris Hani District Municipality<sup>9</sup> is a Category C municipality situated in the north-eastern part of the Eastern Cape, a linking node to all regions in the province. The municipality comprises six local municipalities: Inxuba Yethemba, Enoch Mgijima, Intsika Yethu, Engcobo, Sakhisizwe and Emalahleni.

Population (2016)<sup>h</sup>: 807 974

Population density (2016): 22.2 persons per km<sup>2</sup>

Estimated medical scheme coverage: 5.7%

### Annual trends, 2008/09 – 2017/18

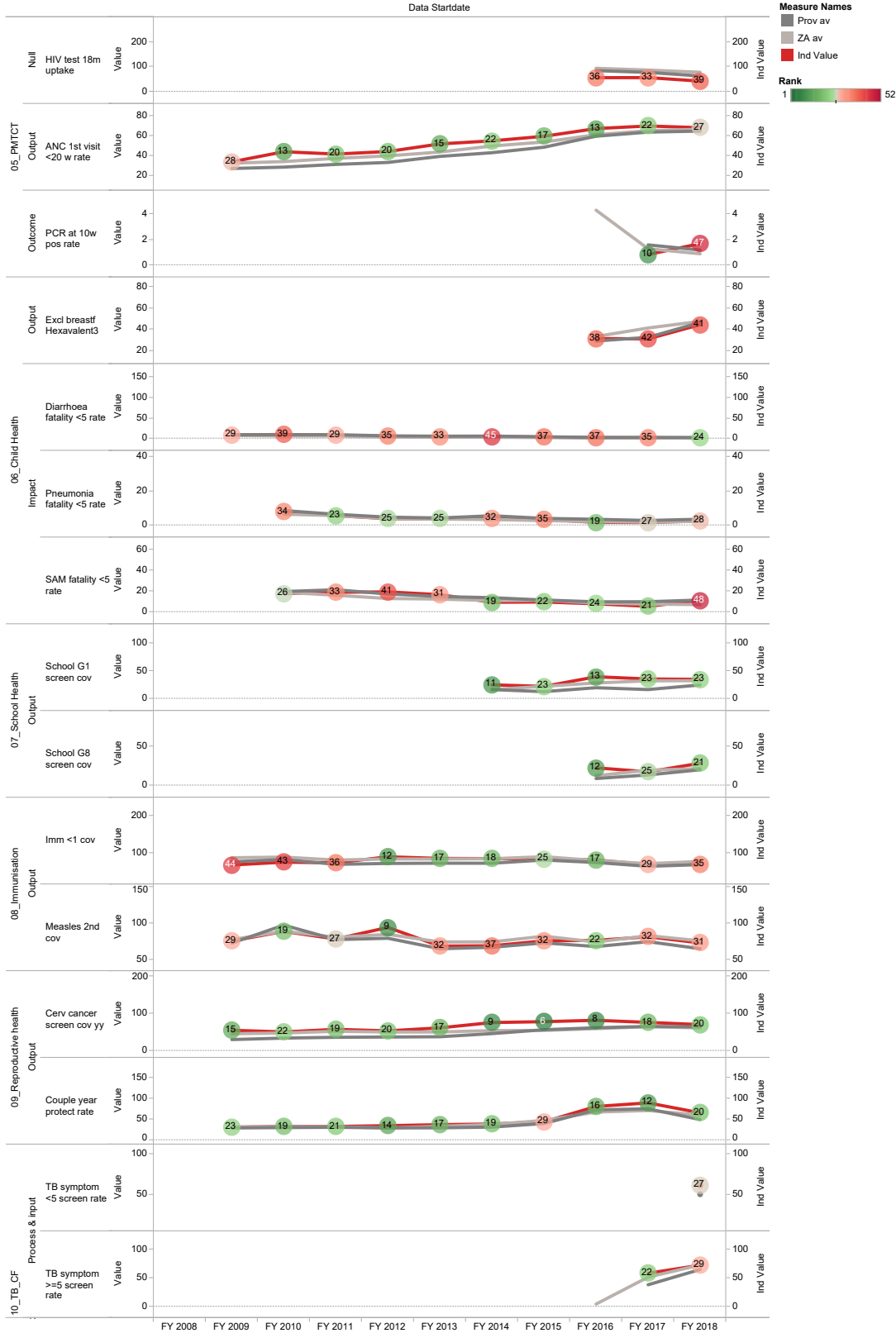


g The Local Government Handbook South Africa 2017. A complete guide to municipalities in South Africa. Seventh edition. Accessible at: [www.municipalities.co.za](http://www.municipalities.co.za).

h Mid-Year Population Estimates 2016, Stats SA.

EC, DC13, ec Chris Hani District Municipality

Data Startdate



# Section B: Profile Eastern Cape Province

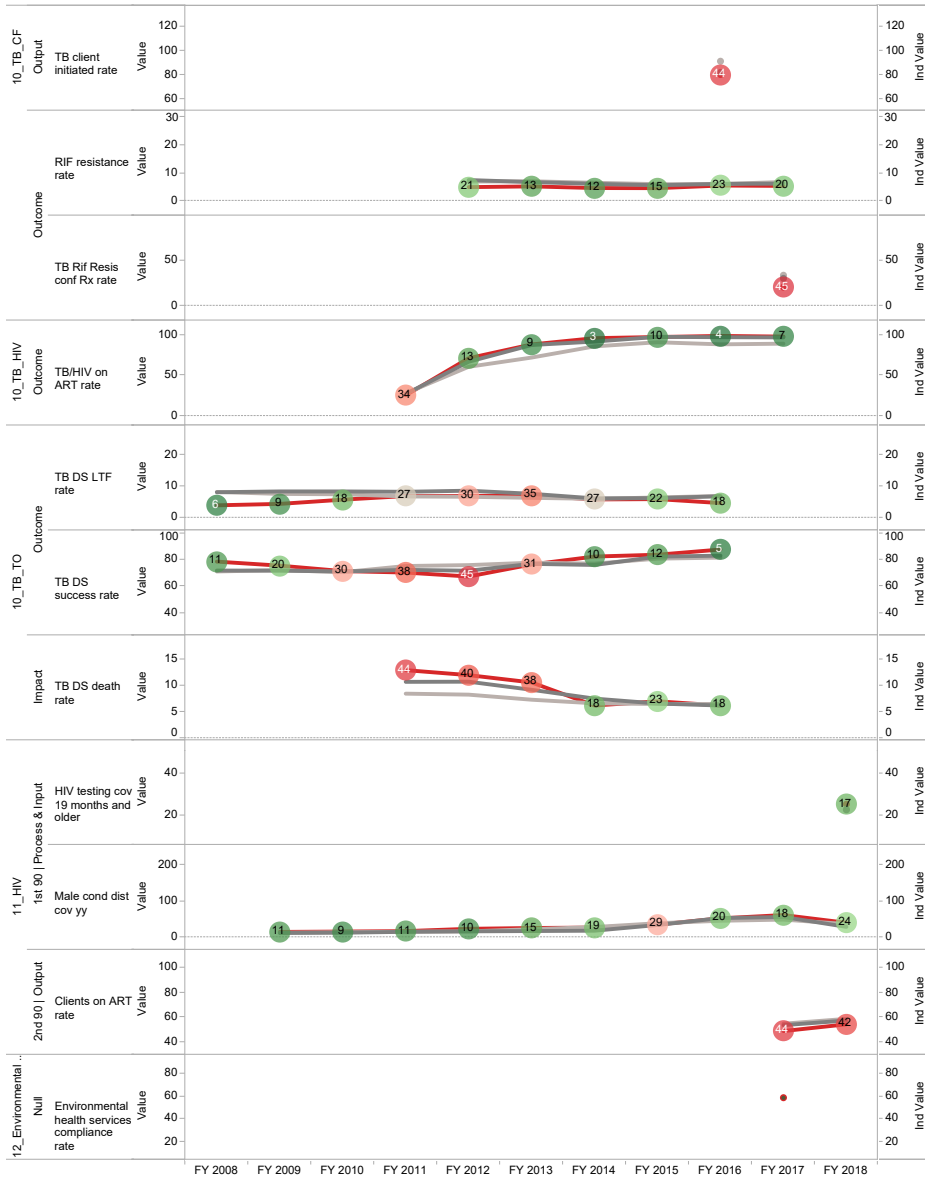
EC, DC13, ec Chris Hani District Municipality

Data Startdate

Measure Names

Prov av  
ZA av  
Ind Value

Rank  
1 52



## Joe Gqabi District Municipality (DC 14)

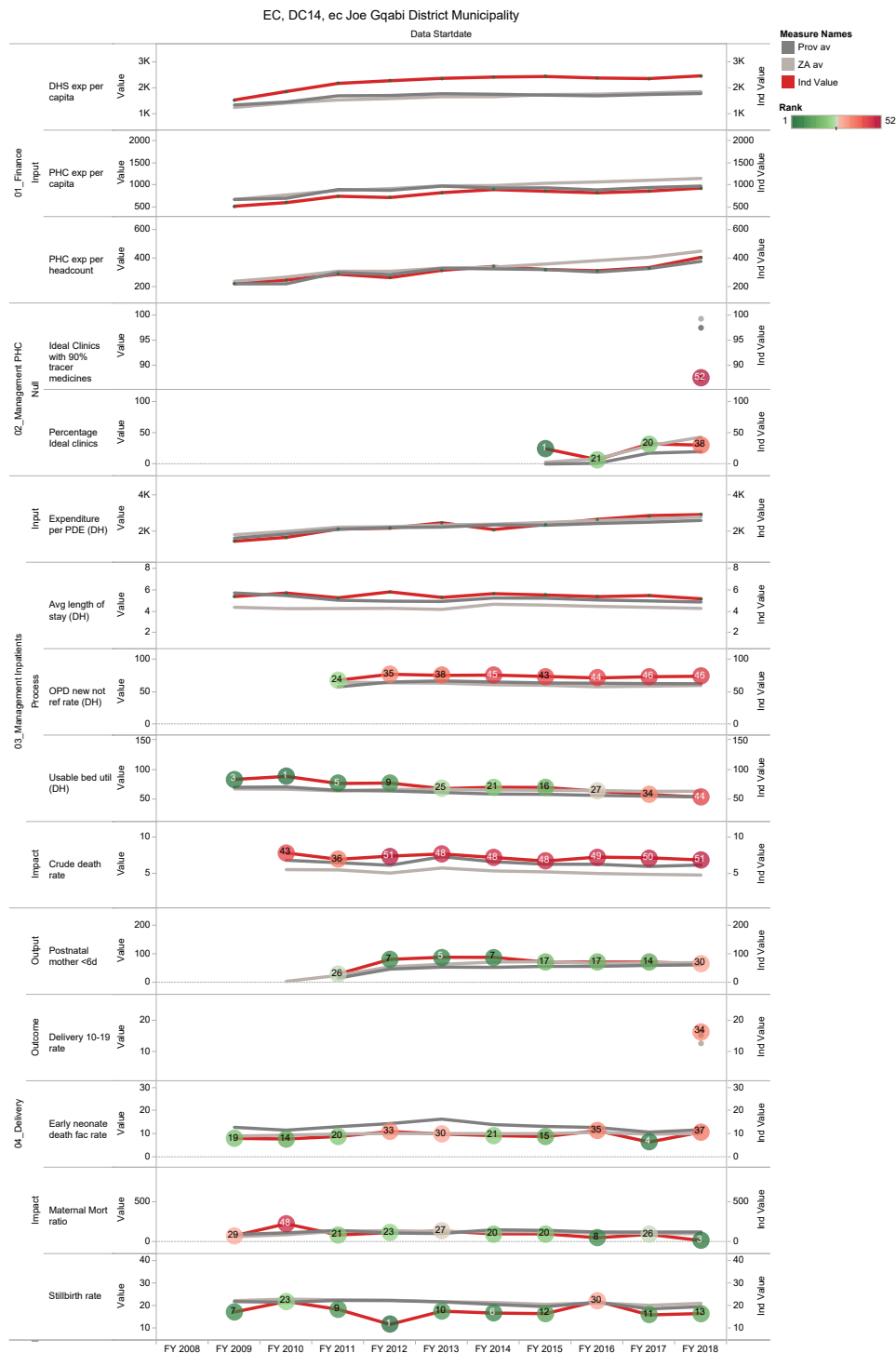
The Joe Gqabi District Municipality<sup>i</sup> is a Category C municipality located within the Eastern Cape. It consists of three local municipalities: Elundini, Walter Sisulu and Senqu. Aliwal North is the main commercial and tourism centre.

Population (2016)<sup>j</sup>: 365 950

Population density (2016): 14.3 persons per km<sup>2</sup>

Estimated medical scheme coverage: 5.4%

### Annual trends, 2008/09 – 2017/18

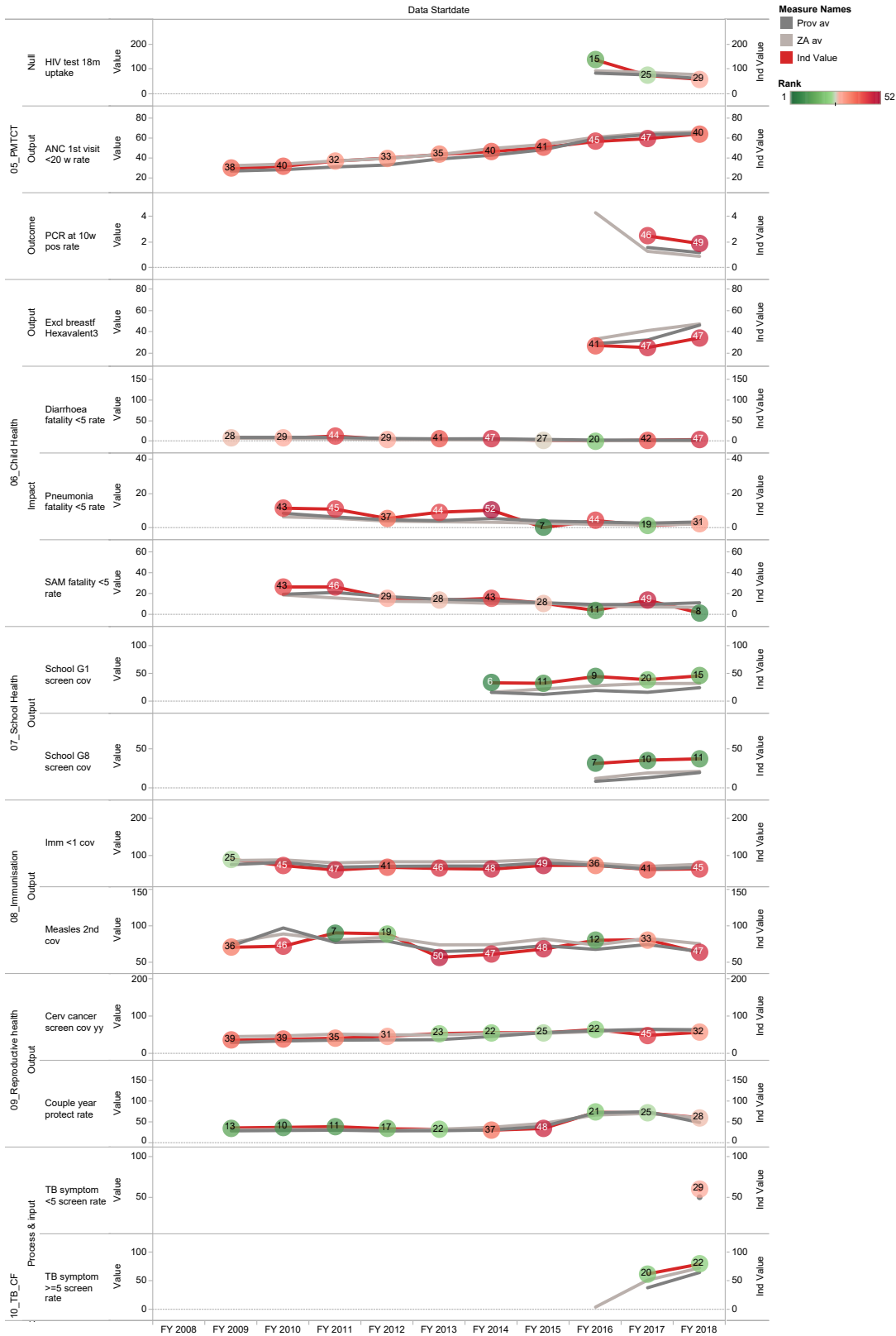


i The Local Government Handbook South Africa 2017. A complete guide to municipalities in South Africa. Seventh edition. Accessible at: [www.municipalities.co.za](http://www.municipalities.co.za).

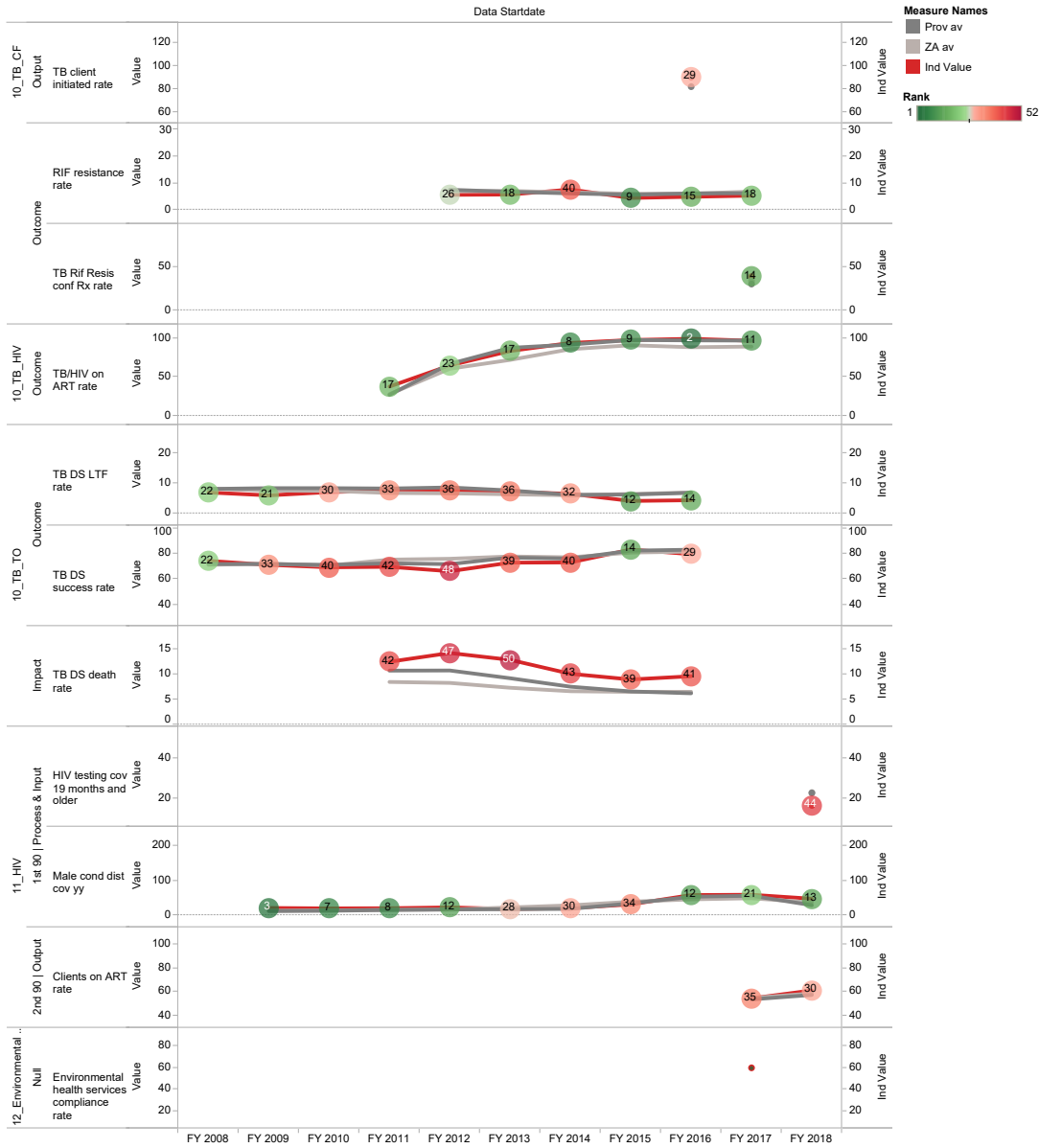
j Mid-Year Population Estimates 2016, Stats SA.

## Section B: Profile Eastern Cape Province

EC, DC14, ec Joe Gqabi District Municipality



EC, DC14, ec Joe Gqabi District Municipality



## OR Tambo District Municipality (DC15)

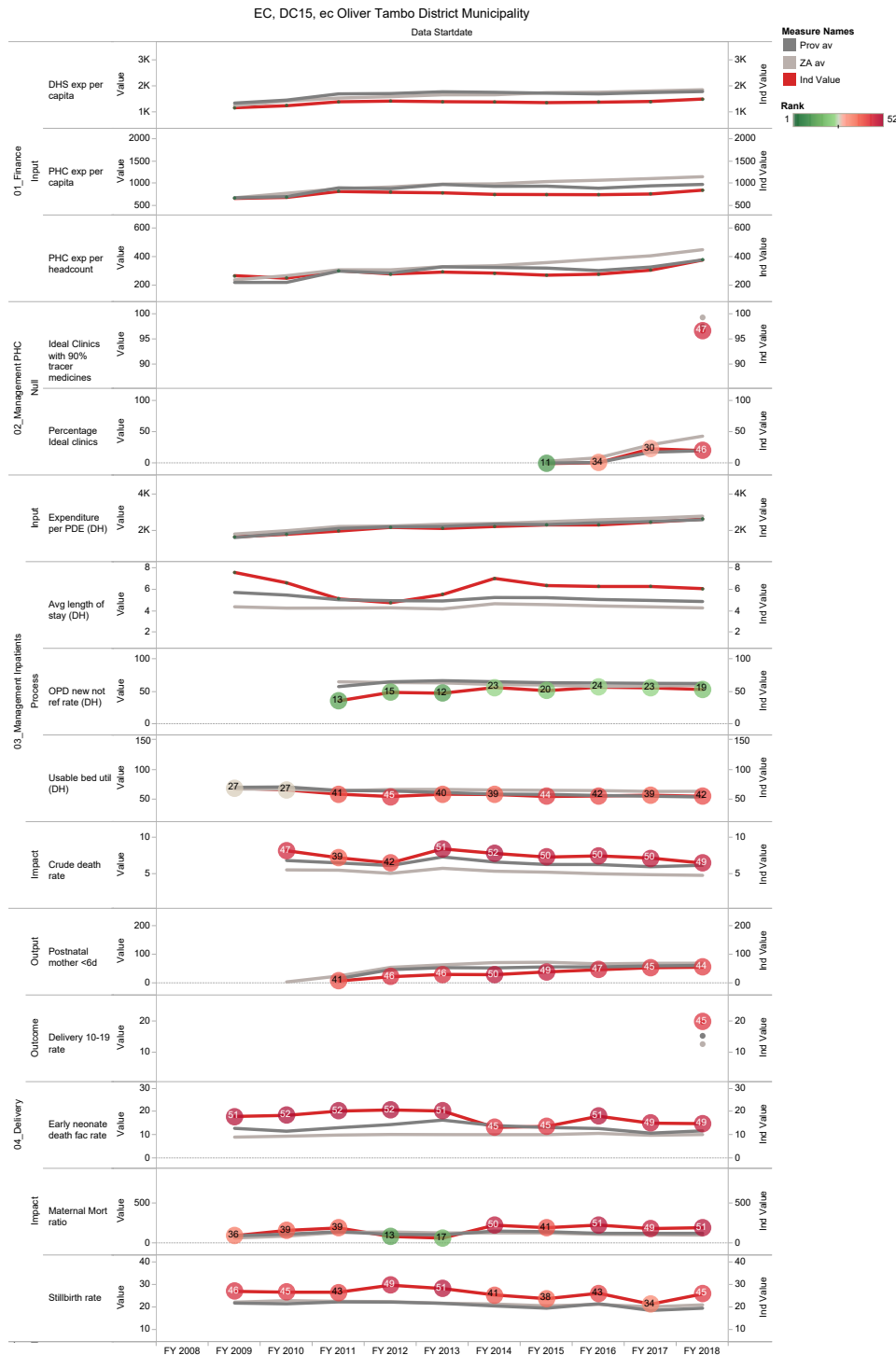
The OR Tambo District Municipality<sup>k</sup> is a Category C municipality located to the east of the Eastern Cape Province. The municipality is formed by five local municipalities: King Sabata Dalindyebo, Nyandeni, Mhlontlo, Port St Johns and Ingquza Hill.

Population (2016)<sup>l</sup>: 1 465 533

Population density (2016): 120.7 persons per km<sup>2</sup>

Estimated medical scheme coverage: 4.5%

### Annual trends, 2008/09 – 2017/18

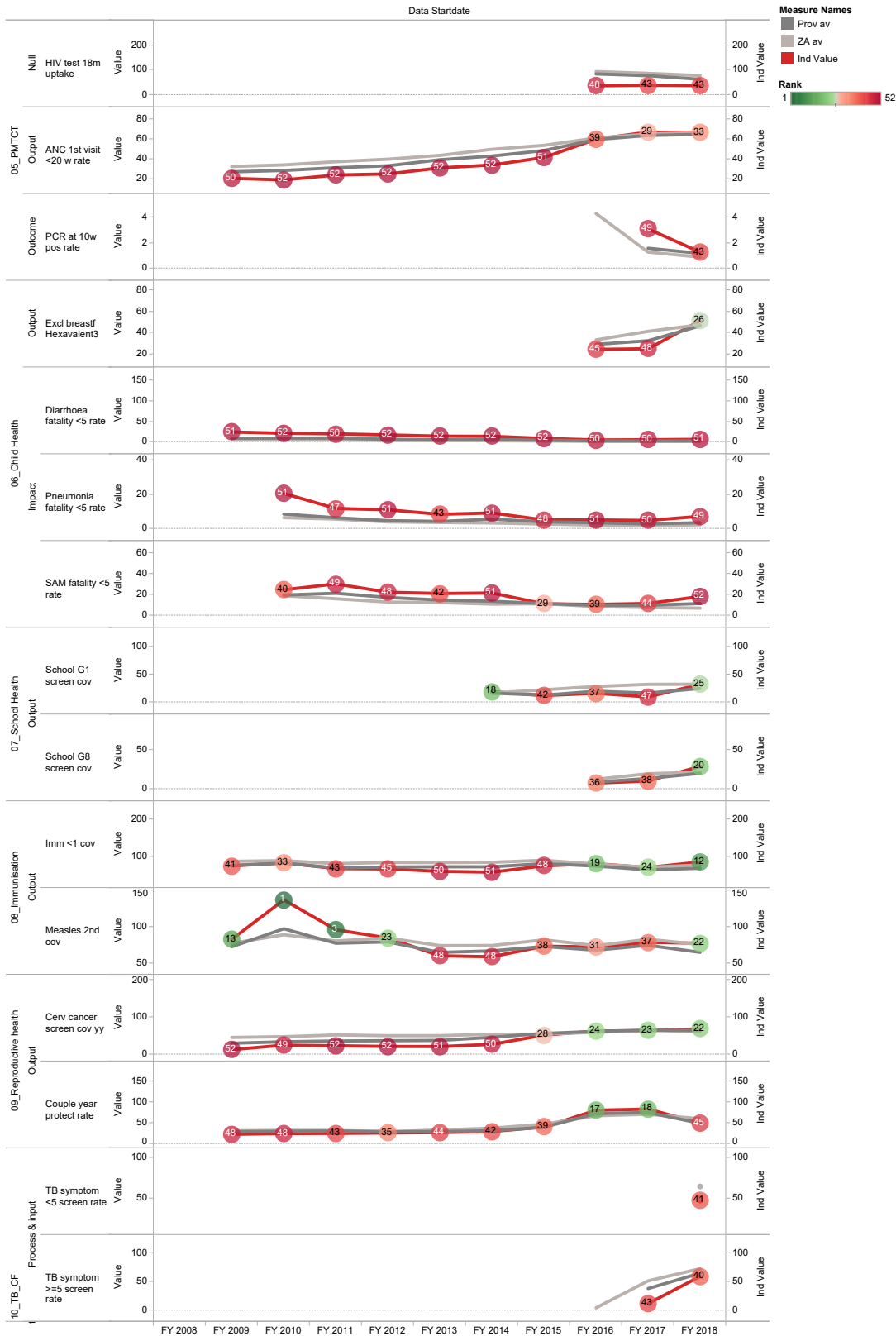


<sup>k</sup> The Local Government Handbook South Africa 2017. A complete guide to municipalities in South Africa. Seventh edition. Accessible at: [www.municipalities.co.za](http://www.municipalities.co.za).

<sup>l</sup> Mid-Year Population Estimates 2016, Stats SA.

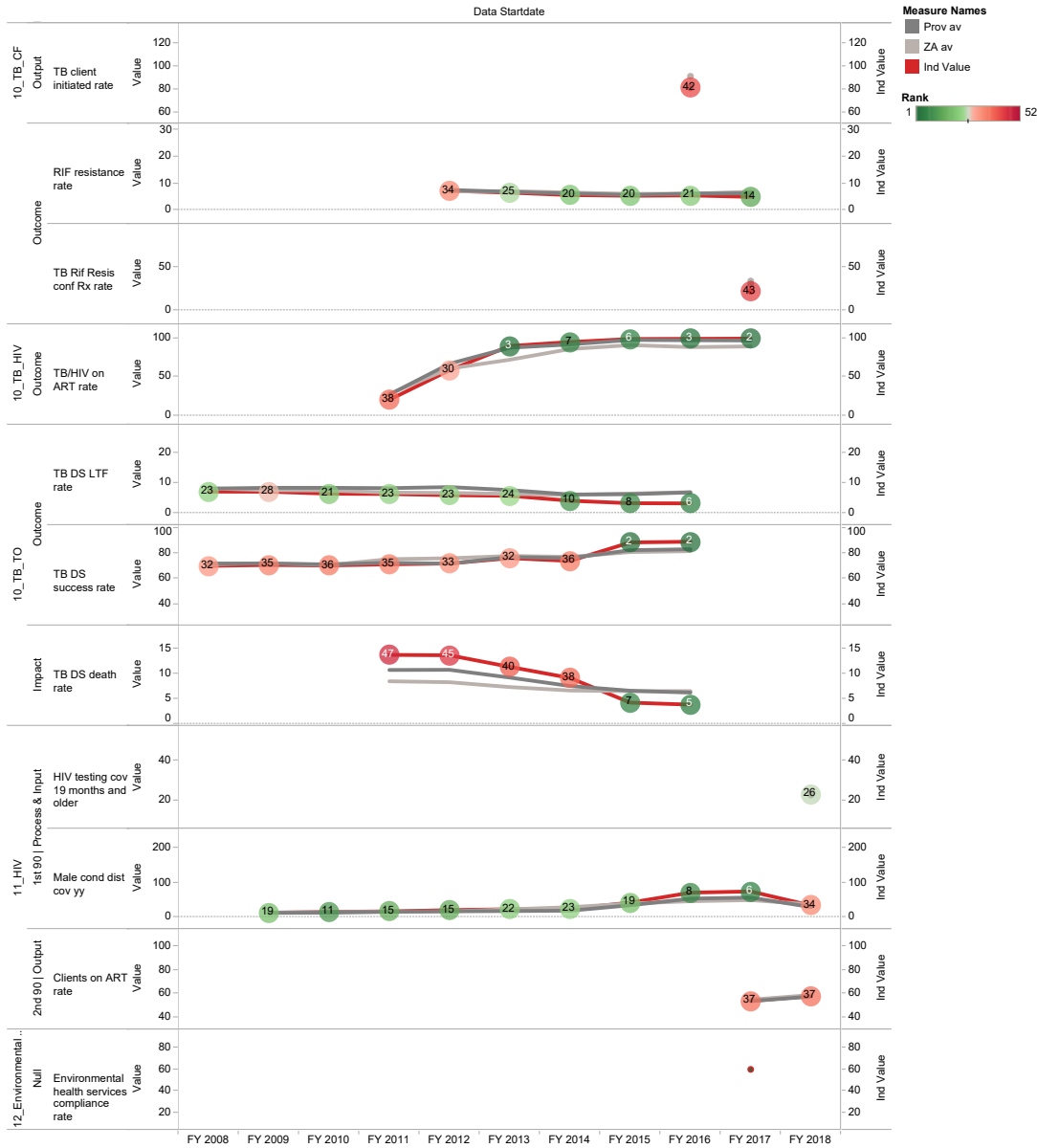


EC, DC15, ec Oliver Tambo District Municipality



## Section B: Profile Eastern Cape Province

EC, DC15, ec Oliver Tambo District Municipality



## Alfred Nzo District Municipality (DC44)

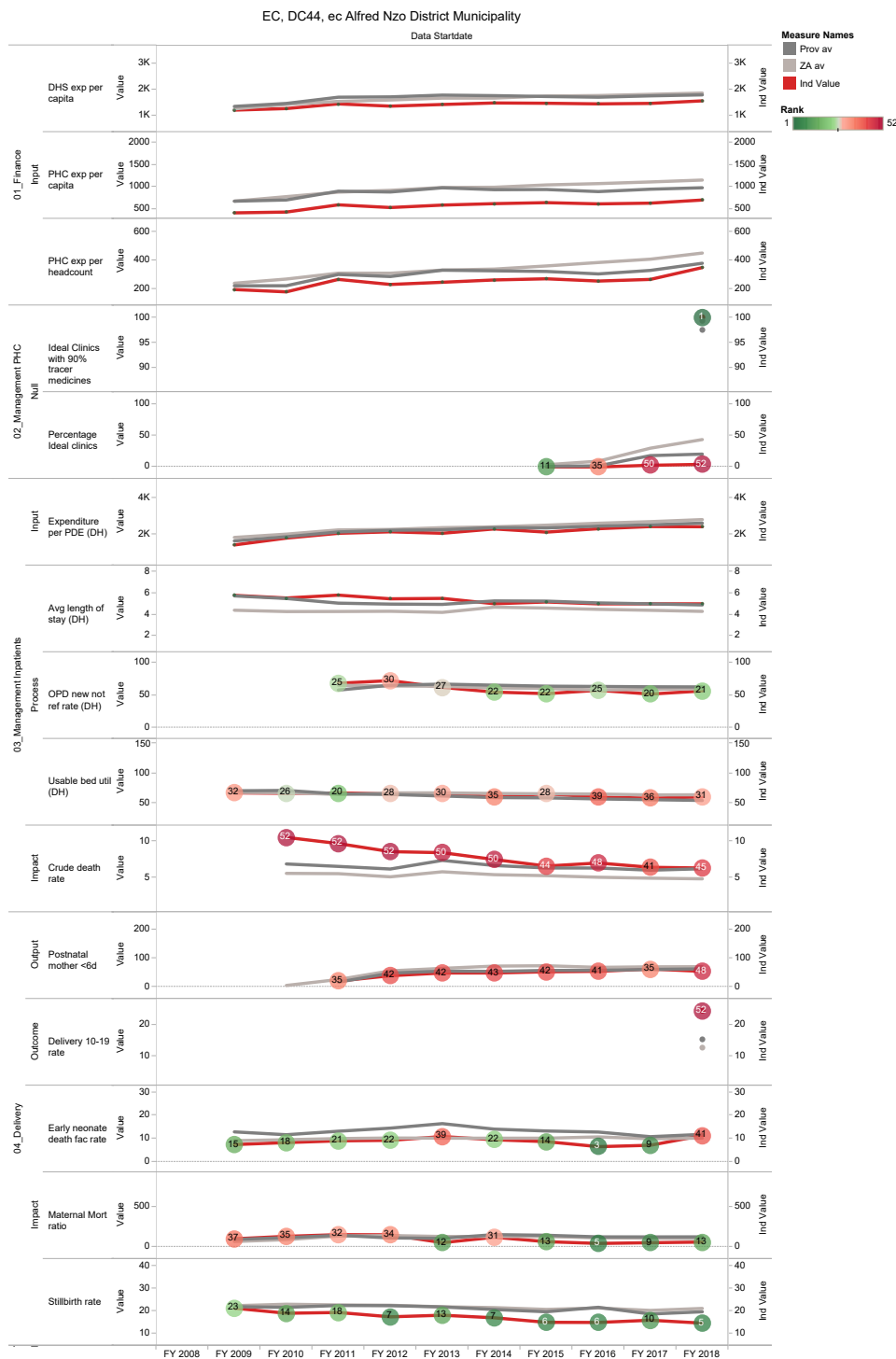
The Alfred Nzo District Municipality<sup>m</sup> is a Category C municipality located in the north-eastern corner of the Eastern Cape Province. The municipality comprises Matatiele, Ntbankulu, Mbizana and Umzimvubu local municipalities.

Population (2016)<sup>n</sup>: 85 0121

Population density (2016): 79.2 persons per km<sup>2</sup>

Estimated medical scheme coverage: 3.7%

### Annual trends, 2008/09 – 2017/18

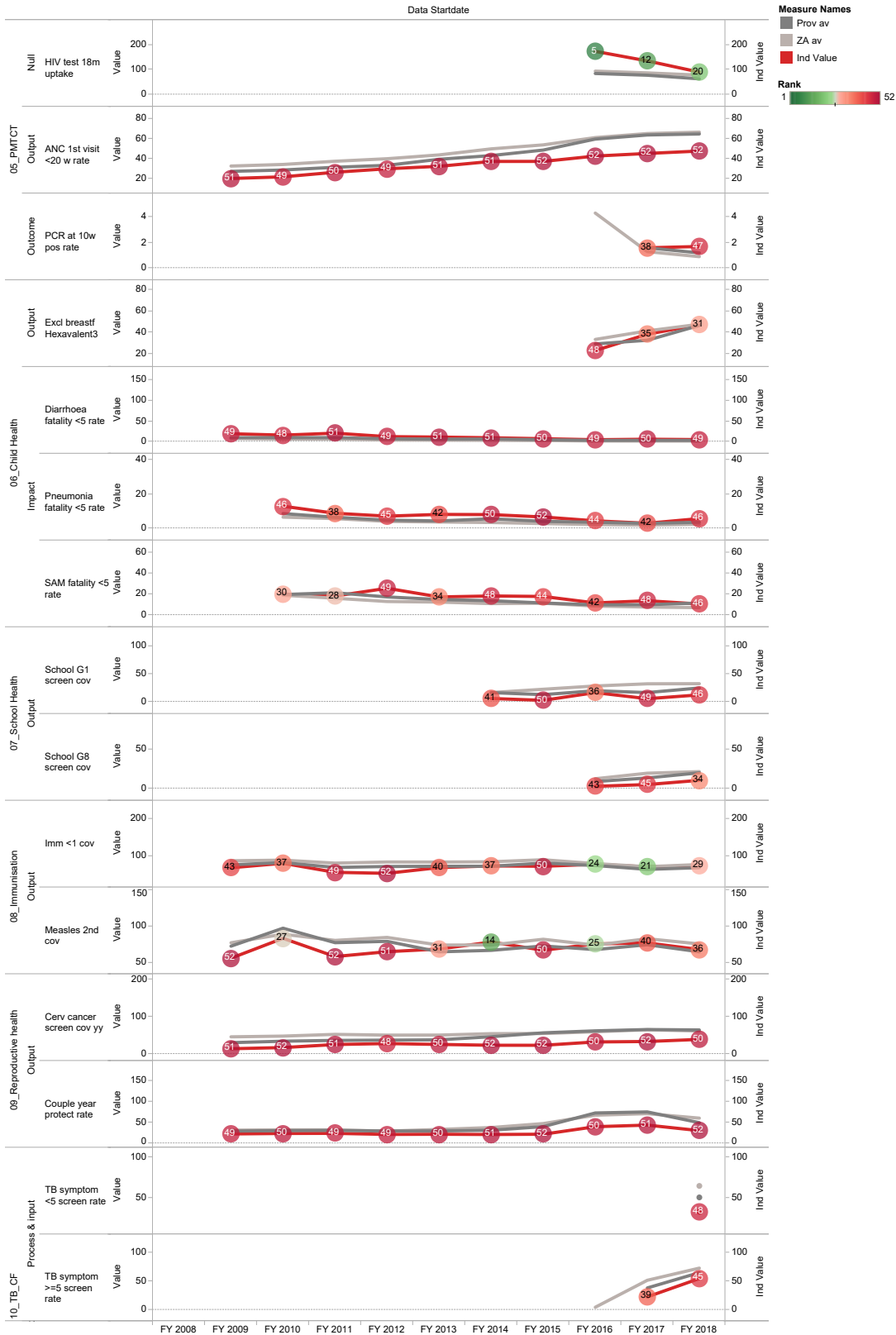


<sup>m</sup> The Local Government Handbook South Africa 2017. A complete guide to municipalities in South Africa. Seventh edition. Accessible at: [www.municipalities.co.za](http://www.municipalities.co.za).

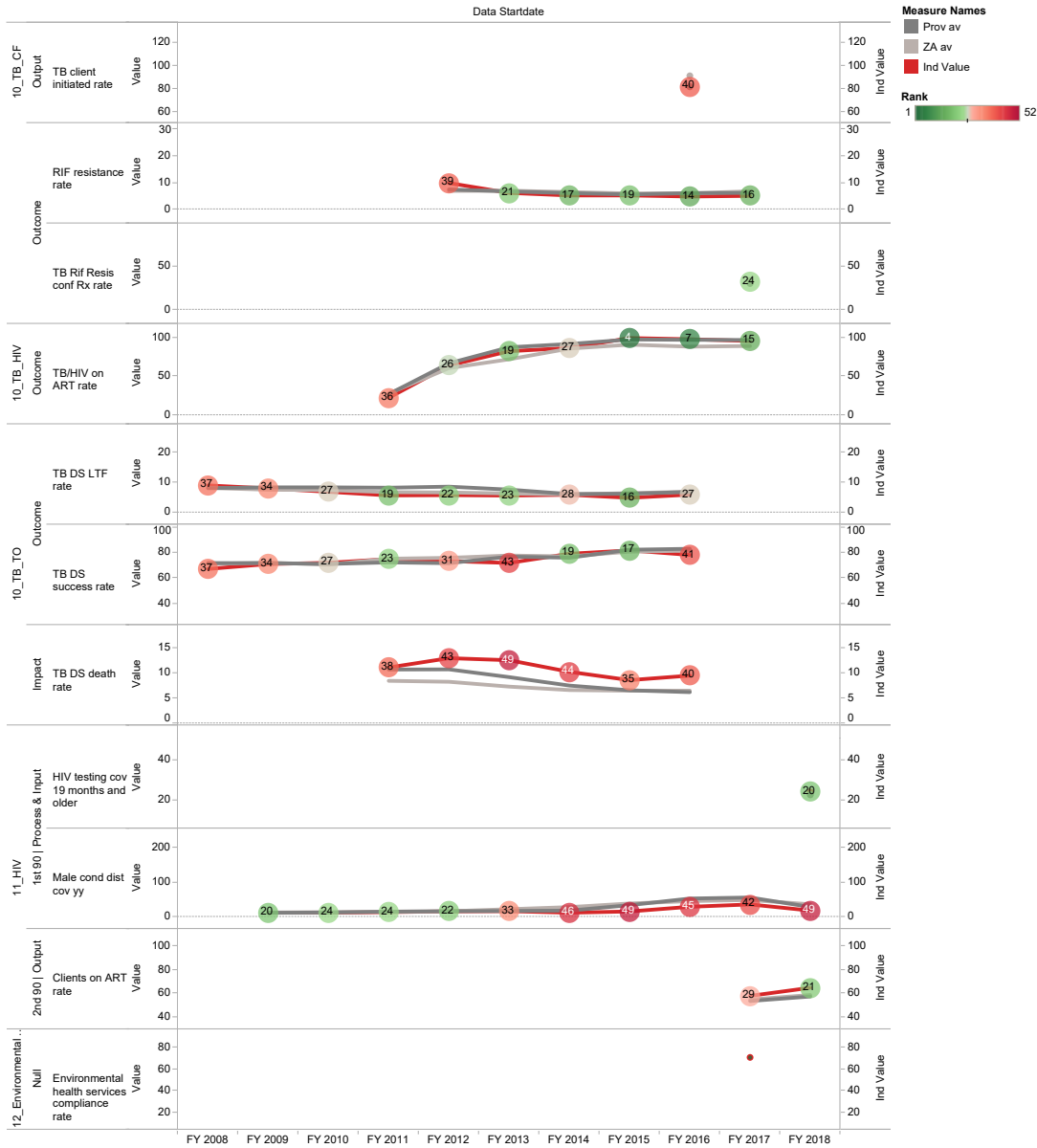
<sup>n</sup> Mid-Year Population Estimates 2016, Stats SA.

# Section B: Profile Eastern Cape Province

EC, DC44, ec Alfred Nzo District Municipality



EC, DC44, ec Alfred Nzo District Municipality



## Nelson Mandela Bay Metropolitan (NMA)

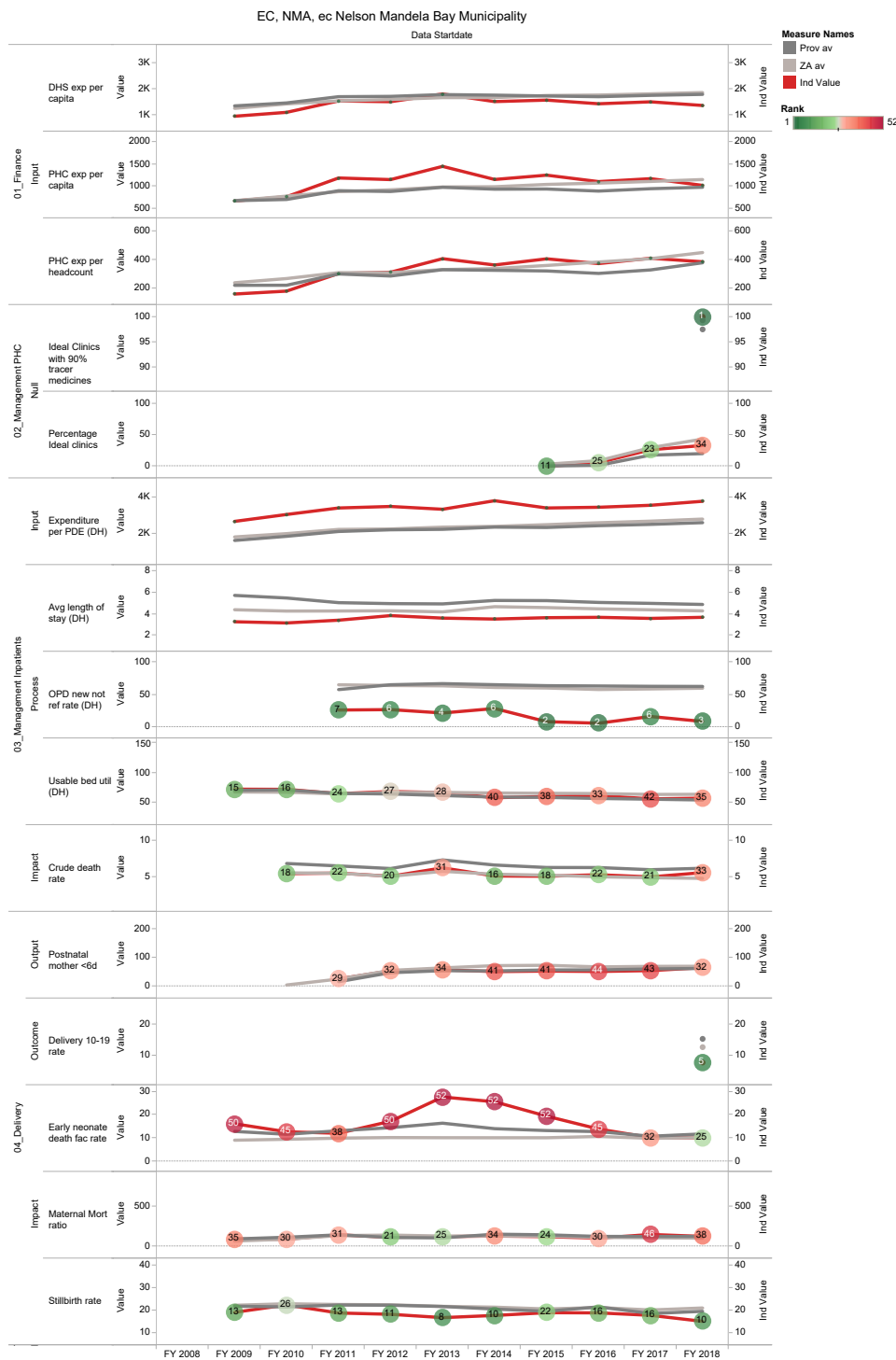
The Nelson Mandela Bay Metropolitan Municipality<sup>o</sup> is a Category A municipality. The Metropolitan Municipality comprises three health sub-districts, namely Nelson Mandela A, Nelson Mandela B and Nelson Mandela C.

Population (2016)<sup>p</sup>: 1 263 306

Population density (2016): 645.5 persons per km<sup>2</sup>

Estimated medical scheme coverage: 20.7%

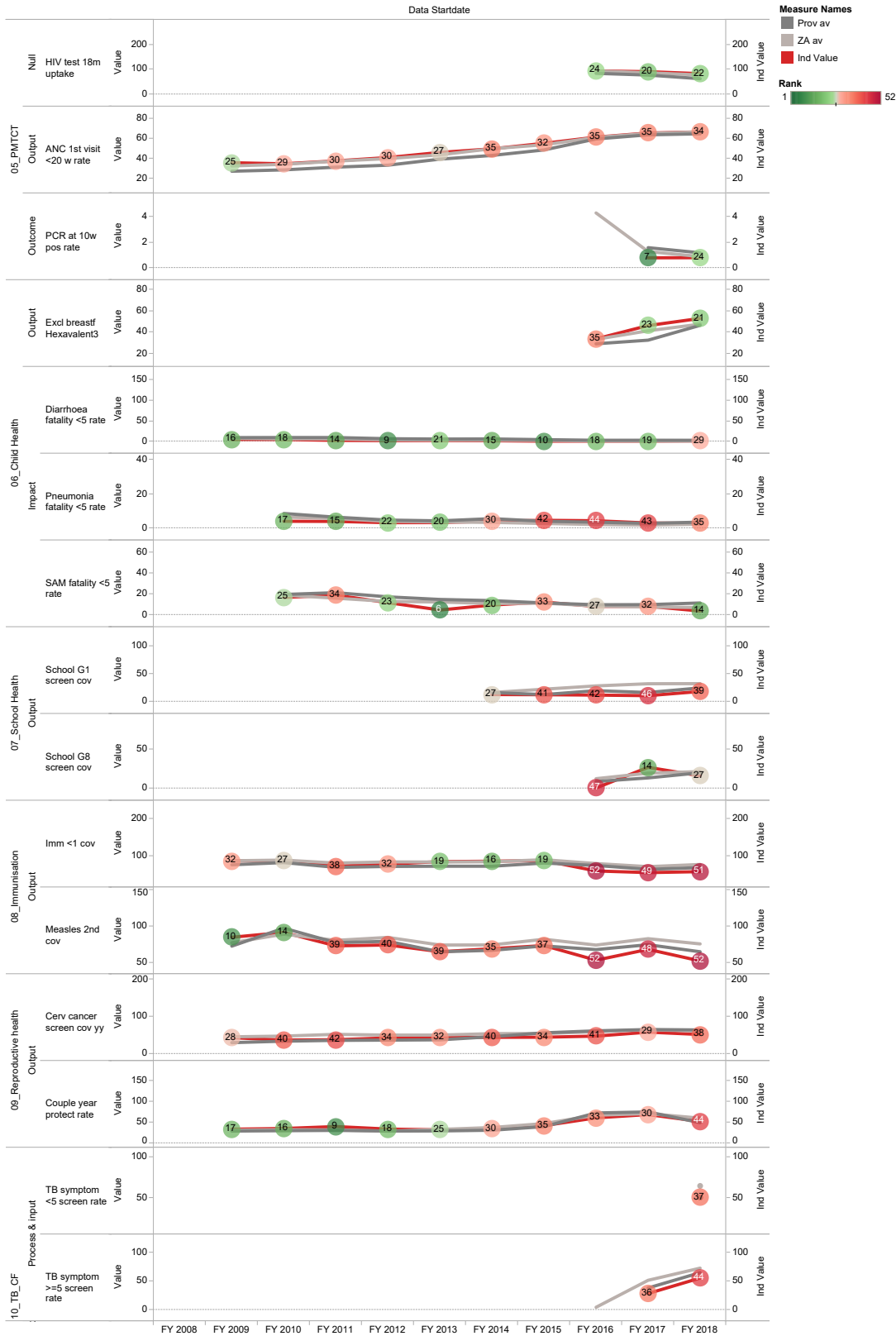
### Annual trends, 2008/09 – 2017/18



<sup>o</sup> The Local Government Handbook South Africa 2017. A complete guide to municipalities in South Africa. Seventh edition. Accessible at: [www.municipalities.co.za](http://www.municipalities.co.za)

<sup>p</sup> Mid-Year Population Estimates 2016, Stats SA.

EC, NMA, ec Nelson Mandela Bay Municipality



## Section B: Profile Eastern Cape Province

EC, NMA, ec Nelson Mandela Bay Municipality

