

# 19 Mpumalanga Province

## Gert Sibande District Municipality (DC30)

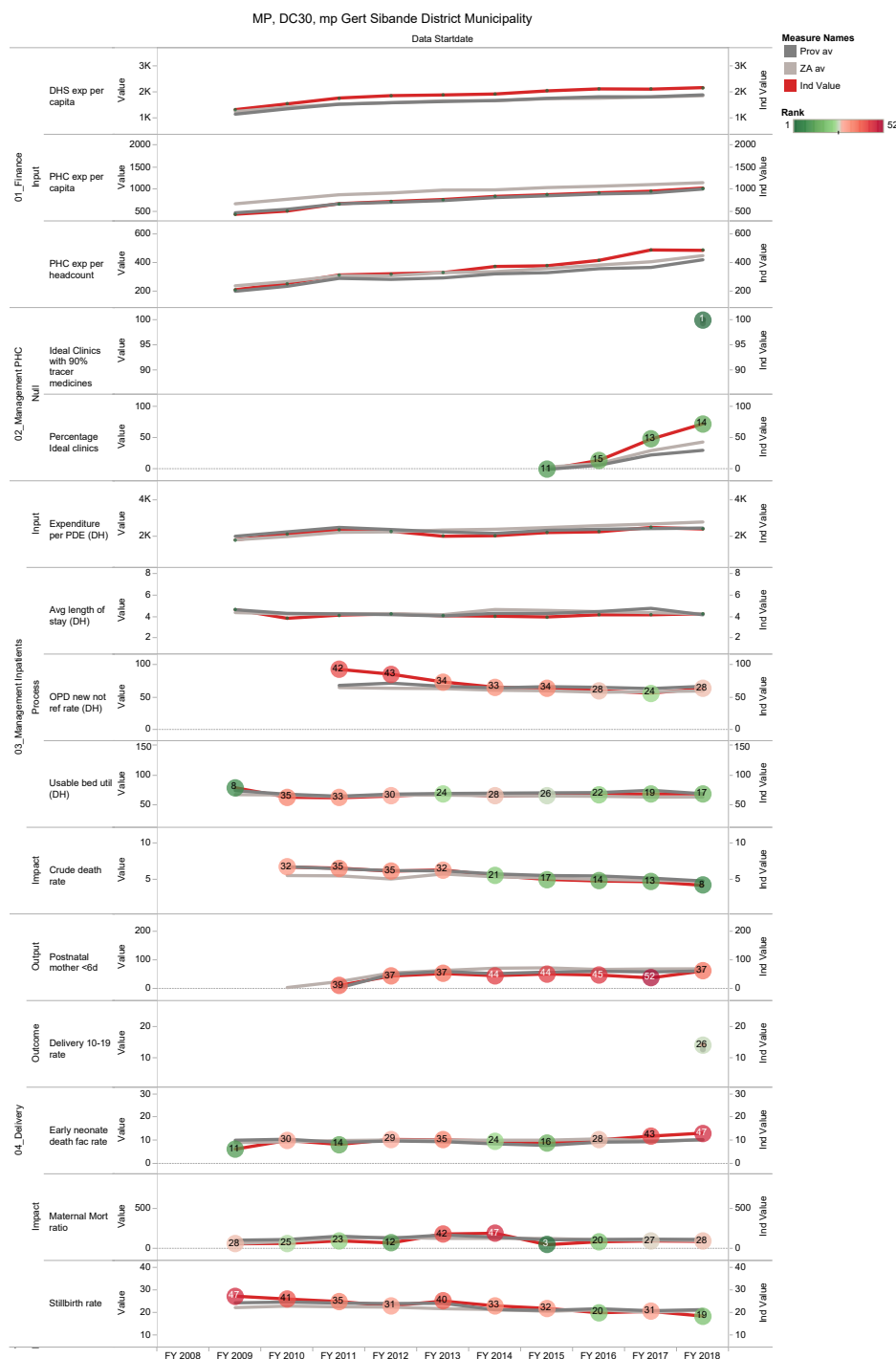
The Gert Sibande District Municipality<sup>a</sup> is a Category C municipality located in the Mpumalanga Province. It comprises seven local municipalities: Govan Mbeki, Chief Albert Luthuli, Msukaligwa, Dipaleseng, Mkhondo, Lekwa and Dr Pixley Ka Seme.

Population (2016)<sup>b</sup>: 1 158 573

Population density (2016): 36.4 persons per km<sup>2</sup>

Estimated medical scheme coverage: 13.5%

### Annual trends, 2008/09 – 2017/18



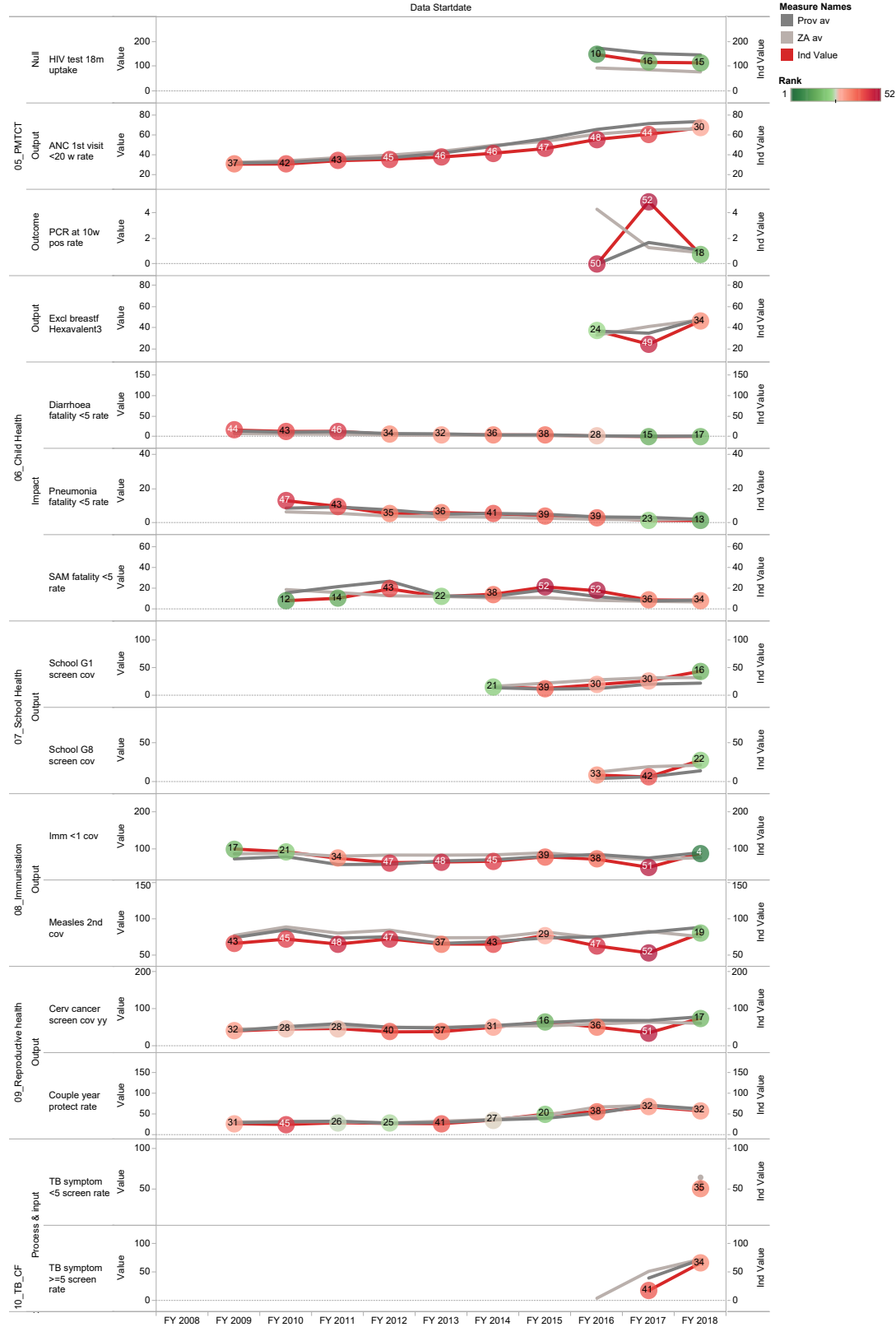
a The Local Government Handbook South Africa 2017. A complete guide to municipalities in South Africa. Seventh edition. Accessible at: [www.municipalities.co.za](http://www.municipalities.co.za).

b Mid-Year Population Estimates 2016, Stats SA.

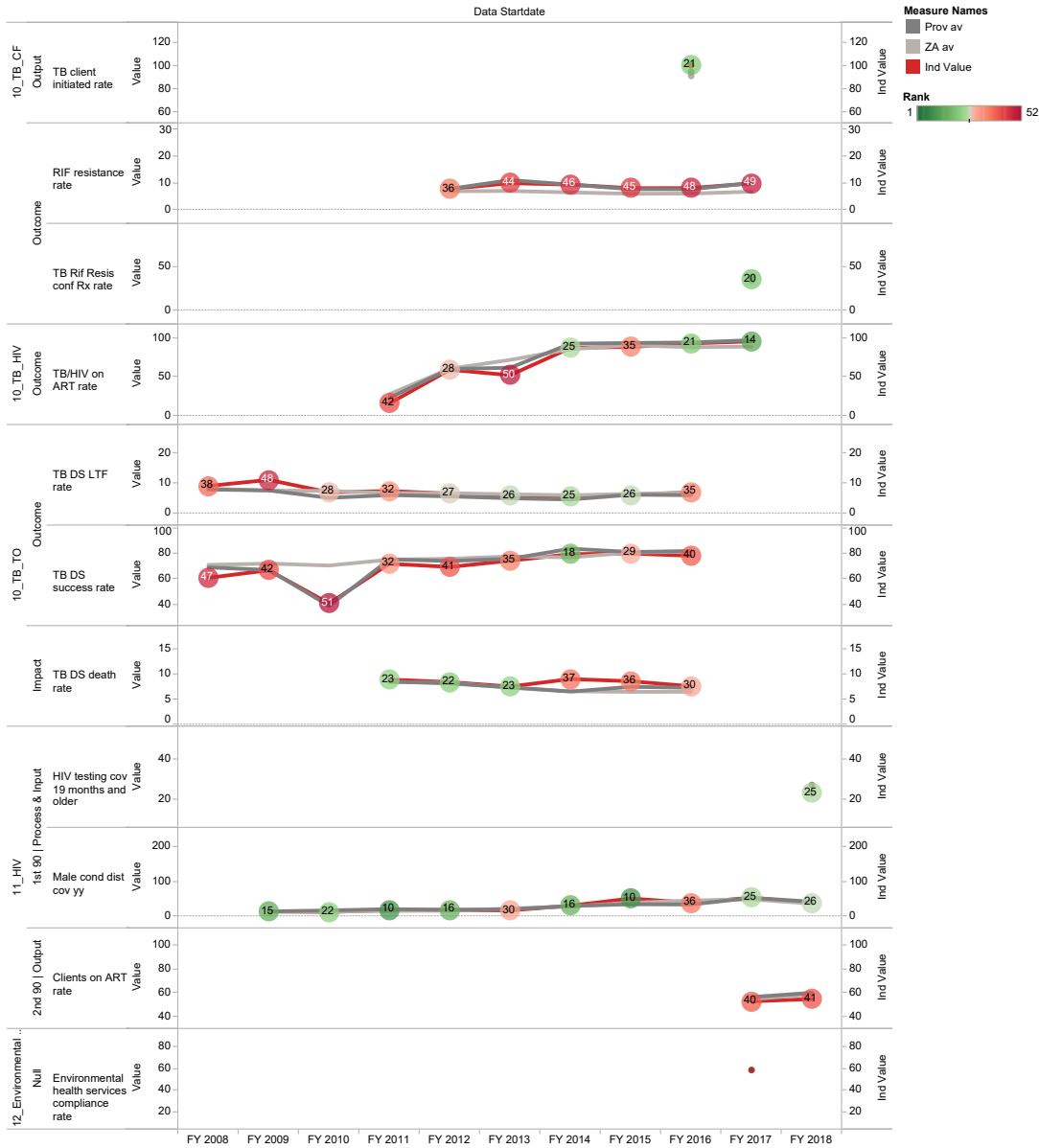
## Section B: Profile Mpumalanga Province

MP, DC30, mp Gert Sibande District Municipality

Data Startdate



MP, DC30, mp Gert Sibande District Municipality



## Nkangala District Municipality (DC31)

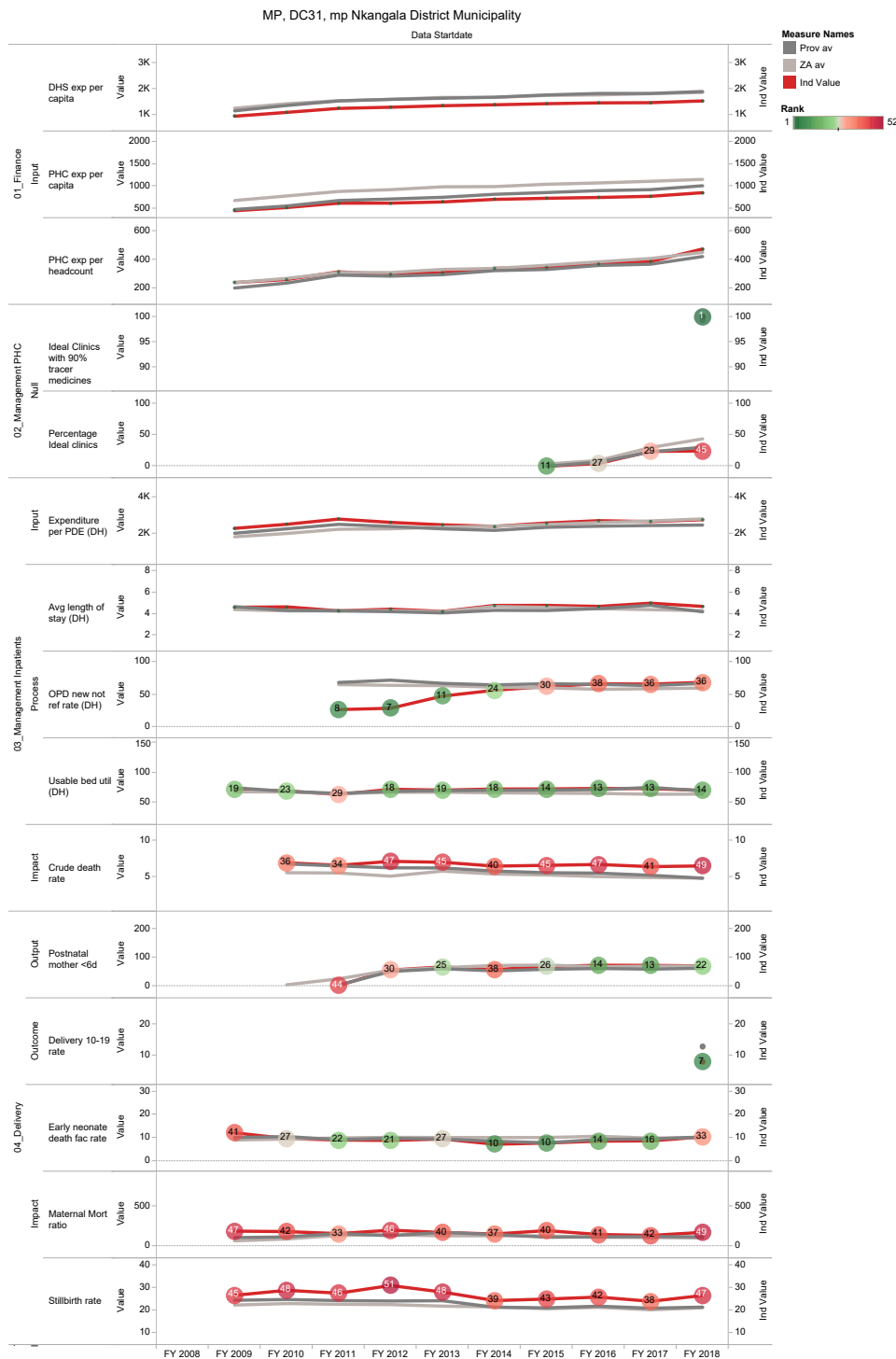
The Nkangala District Municipality<sup>c</sup> is a Category C municipality in the Mpumalanga Province. It comprises six local municipalities: Victor Khanye, Emalahleni, Steve Tshwete, Emakhazeni, Thembisile Hani, and Dr JS Moroka.

Population (2016)<sup>d</sup>: 1 471 801

Population density (2016): 87.8 persons per km<sup>2</sup>

Estimated medical scheme coverage: 15.0%

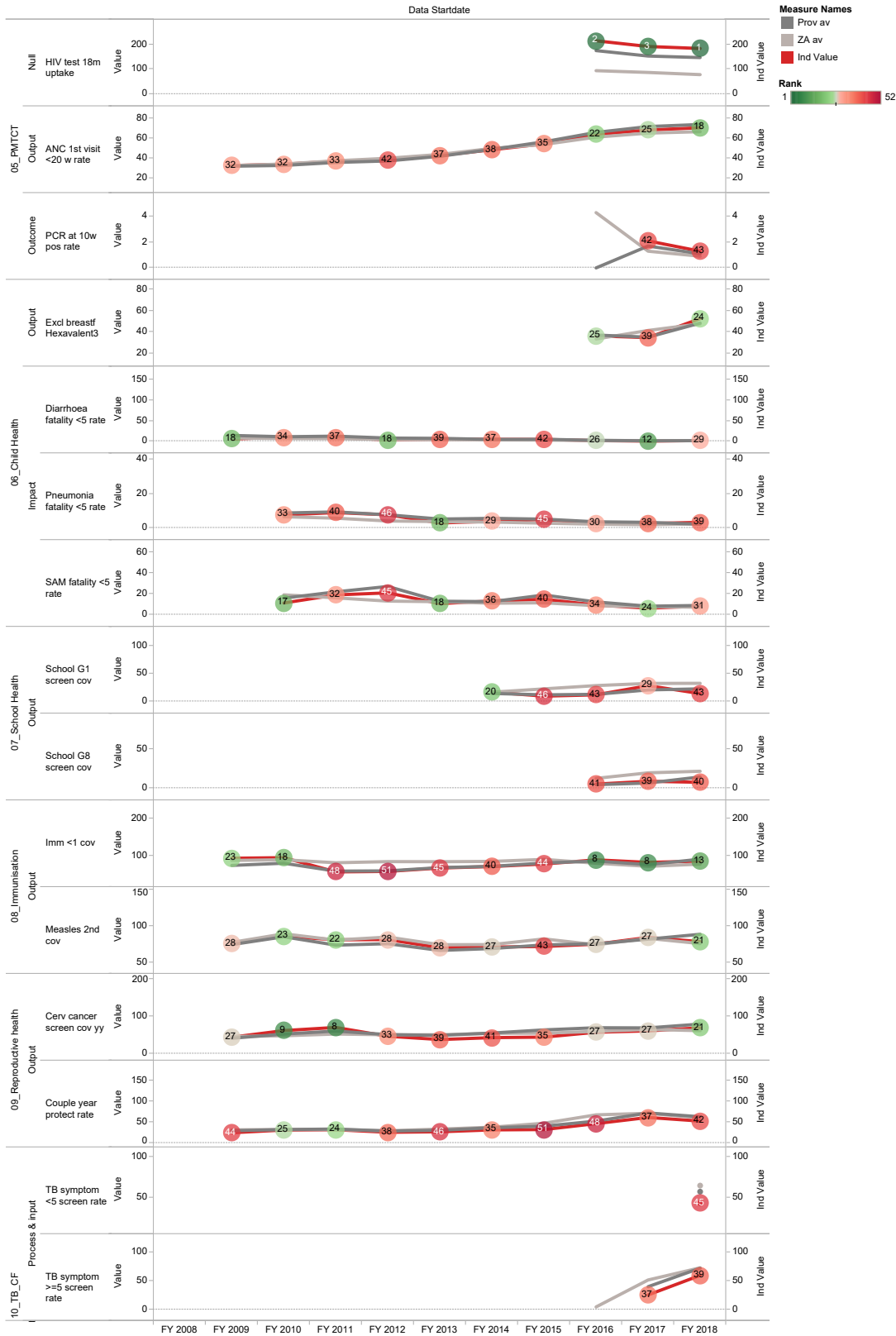
### Annual trends, 2008/09 – 2017/18



<sup>c</sup> The Local Government Handbook South Africa 2017. A complete guide to municipalities in South Africa. Seventh edition. Accessible at: [www.municipalities.co.za](http://www.municipalities.co.za).

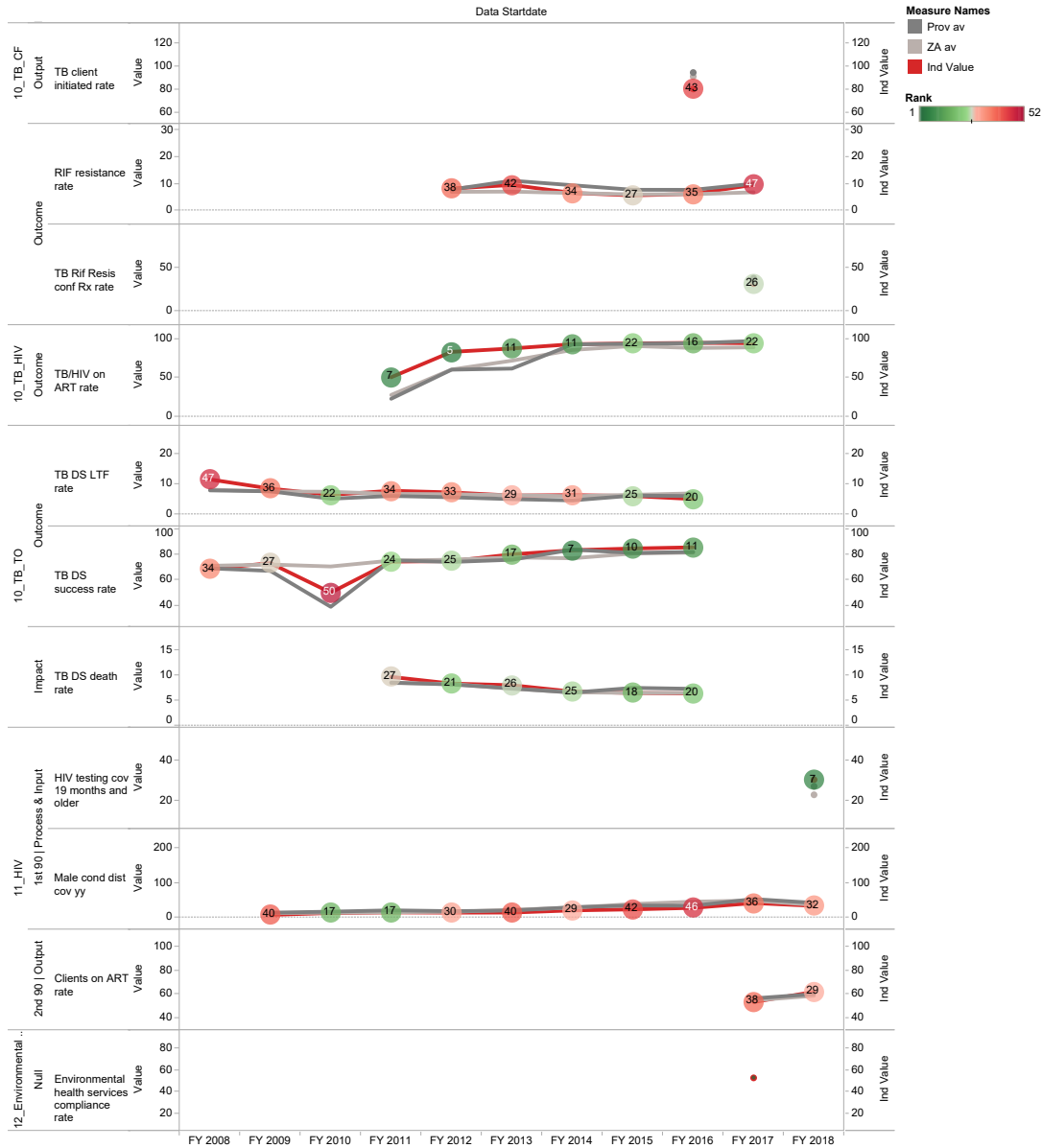
<sup>d</sup> Mid-Year Population Estimates 2016, Stats SA.

MP, DC31, mp Nkangala District Municipality



## Section B: Profile Mpumalanga Province

MP, DC31, mp Nkangala District Municipality



## Ehlanzeni District Municipality (DC32)

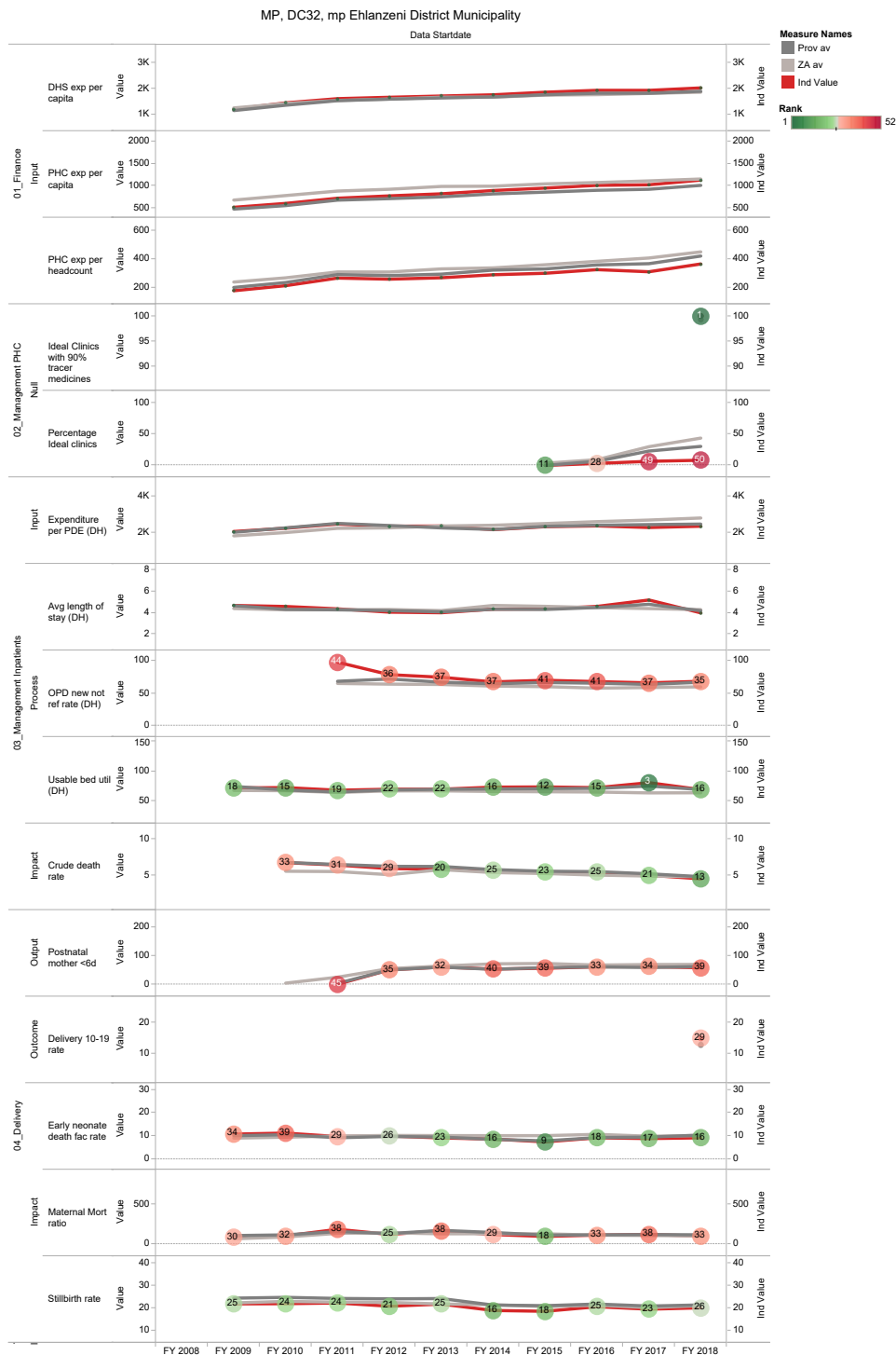
The Ehlanzeni District Municipality<sup>e</sup> is a Category C municipality situated in the north-east of the Mpumalanga Province. The district comprises four local municipalities: Bushbuckridge, City of Mbombela, Nkomazi and Thaba Chweu.

Population (2016)<sup>f</sup>: 1 712 890

Population density (2016): 61.4 persons per km<sup>2</sup>

Estimated medical scheme coverage: 11.6%

### Annual trends, 2008/09 – 2017/18



<sup>e</sup> The Local Government Handbook South Africa 2017. A complete guide to municipalities in South Africa. Seventh edition. Accessible at: [www.municipalities.co.za](http://www.municipalities.co.za).

<sup>f</sup> Mid-Year Population Estimates 2016, Stats SA.

## Section B: Profile Mpumalanga Province

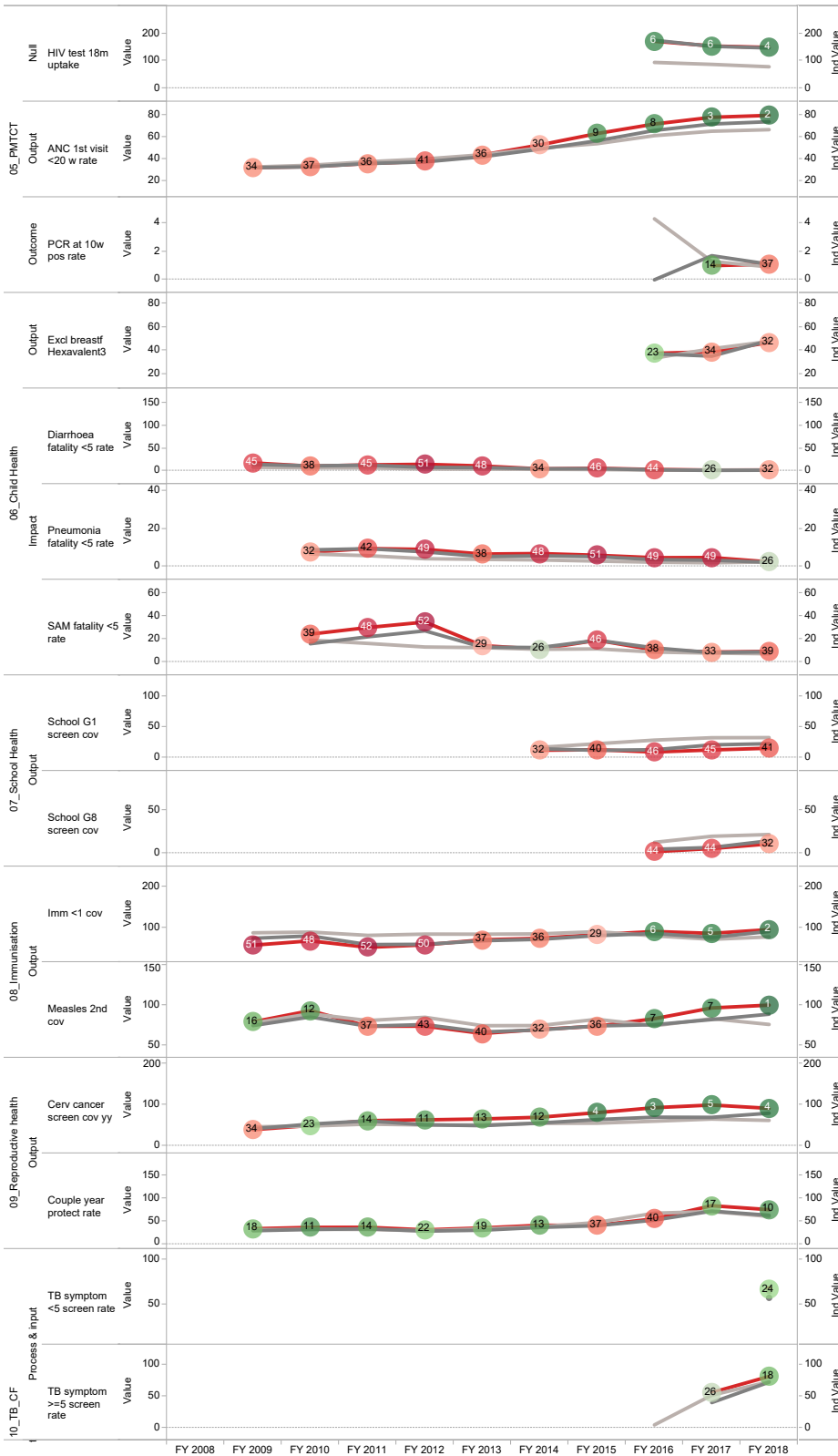
### MP, DC32, mp Ehlanzeni District Municipality

Data Startdate

Measure Names

Prov av  
ZA av  
Ind Value

Rank  
1 52





MP, DC32, mp Ehlanzeni District Municipality

