

9. Free State Province

Xhariep District Municipality (DC16)

The Xhariep District Municipality^a is a Category C municipality situated in the southern part of the Free State. It is comprised of three local municipalities: Letsemeng, Kopanong and Mohokare.

Population (2018)^b: 154 811

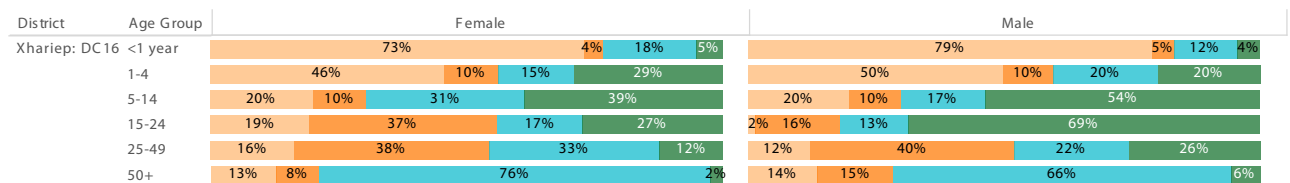
Population density (2018): 4.5 persons per km²

Estimated medical scheme coverage (2018): 10.5%

Burden of disease profile

For the percentage of deaths by broad cause, deaths are classified into four groups, namely: (i) injuries; (ii) non-communicable diseases; (iii) HIV and TB; and (iv) communicable diseases together with maternal, perinatal and nutritional conditions. Data are given by gender and age group for the period 2013 - 2015.

Percentage of deaths by broad cause, 2013 - 2015



Source: Stats SA.

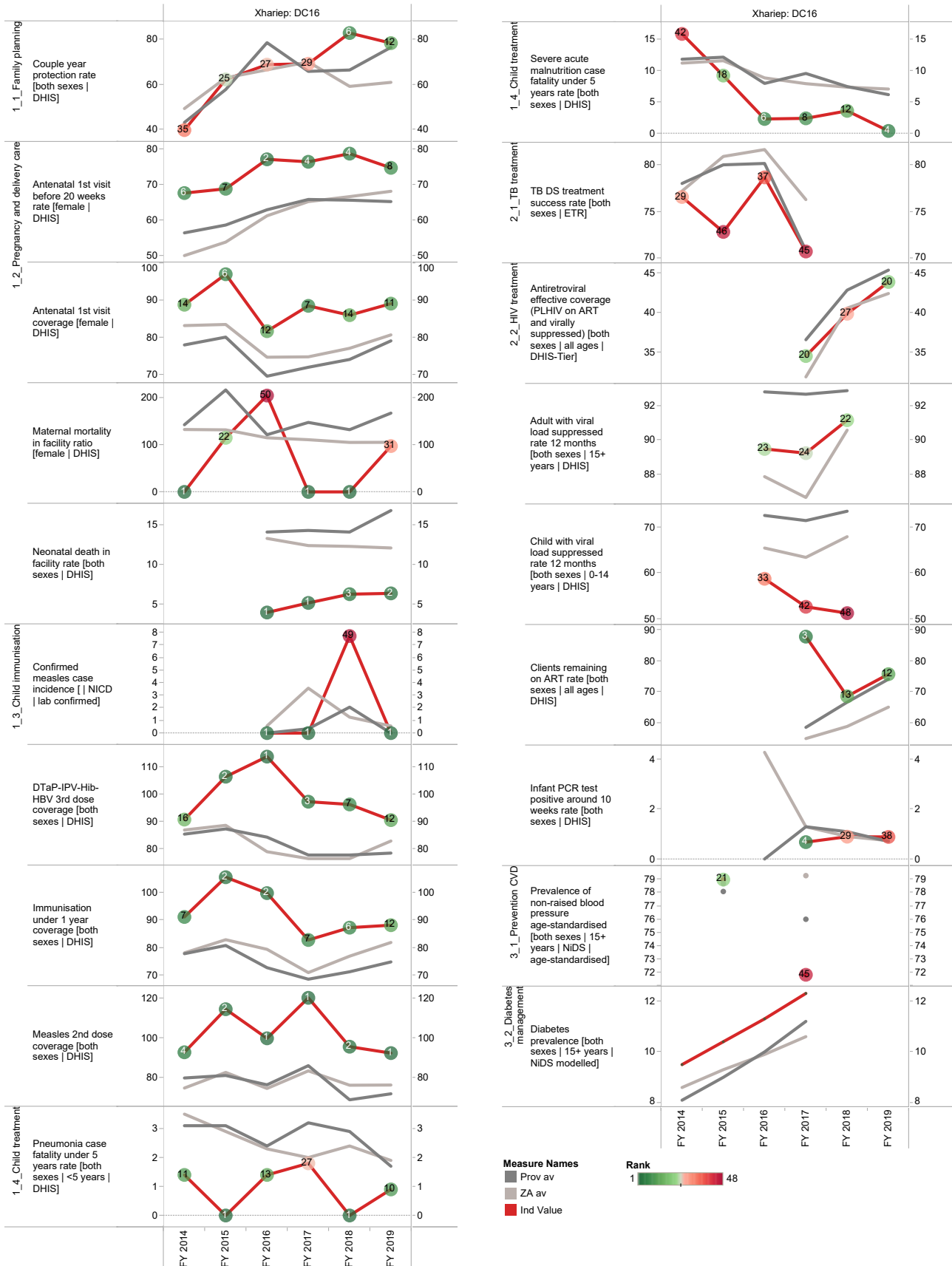
Broadcause
 Injury
 NCD
 HIV and TB
 Comm_mat_peri_nut

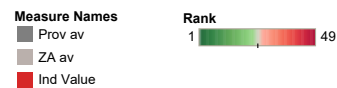
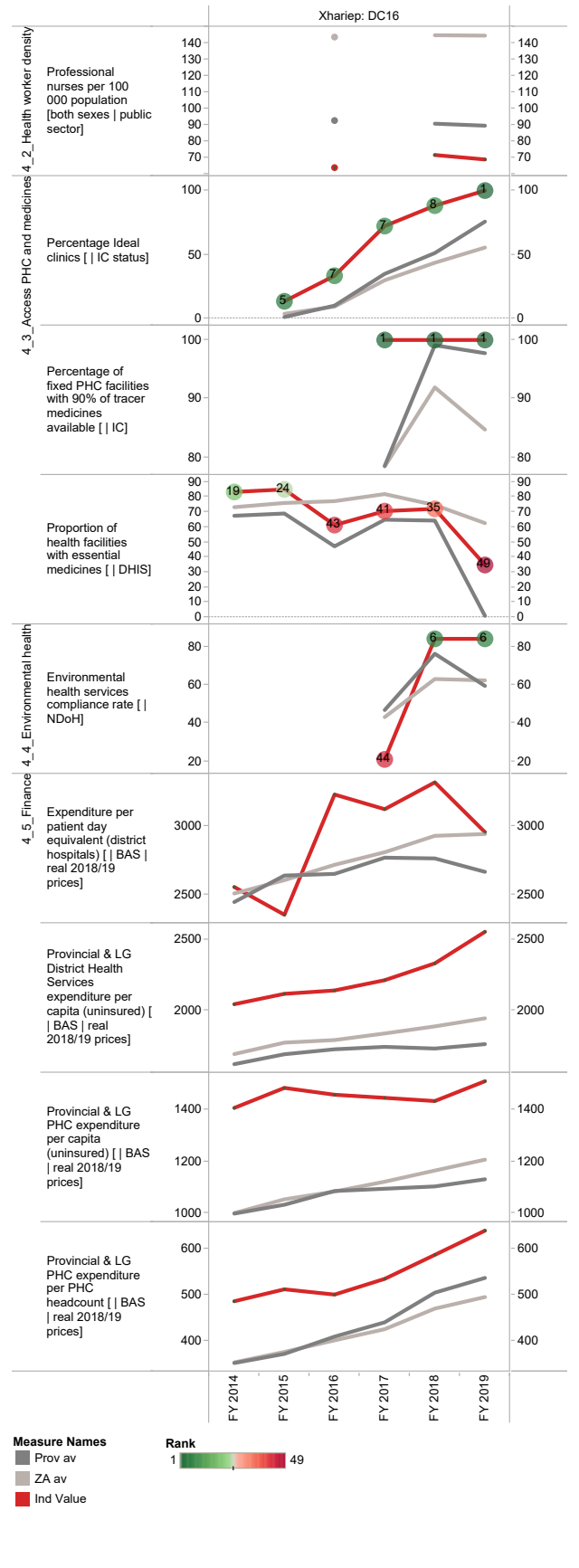
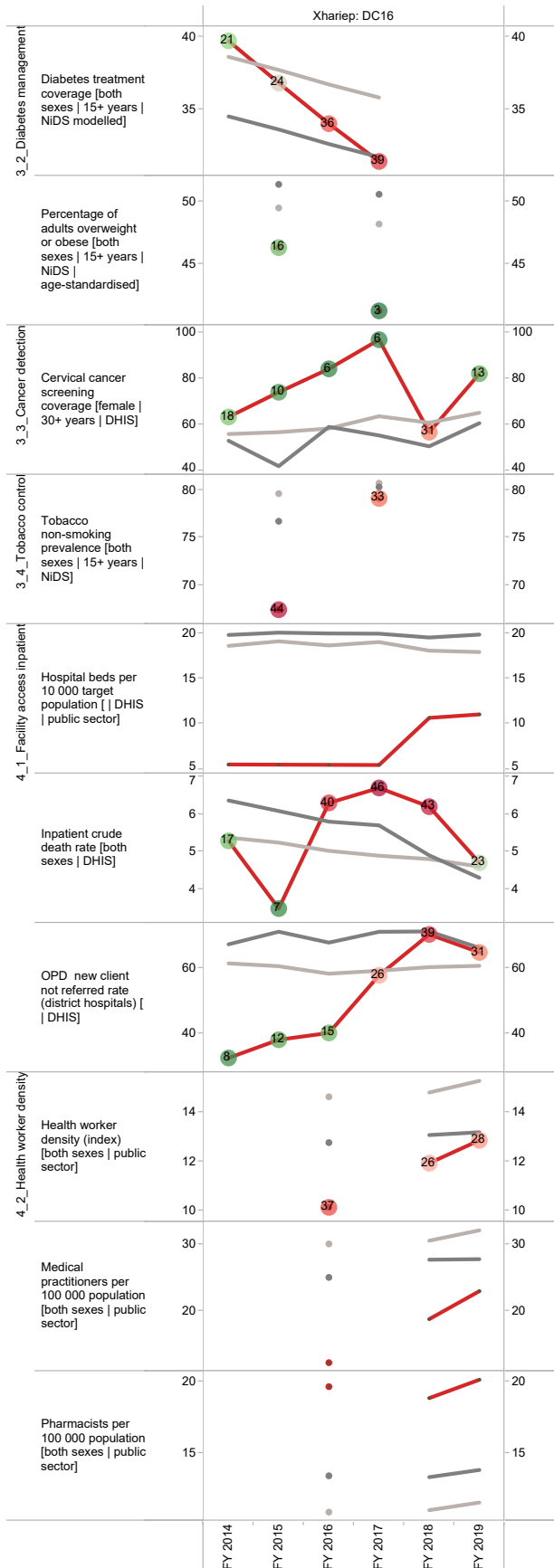
a The Local Government Handbook South Africa 2017. A complete guide to municipalities in South Africa. Seventh edition. Accessible at: www.municipalities.co.za.

b Mid-Year Population Estimates 2018, Stats SA.

Section B: Profile Free State Province

Annual trends, 2013/14 - 2018/19





Lejweleputswa District Municipality (DC18)

The Lejweleputswa District Municipality^c is a Category C municipality situated in the north-western part of the Free State. It consists of the following five local municipalities: Masilonyana, Tokologo, Tswelopele, Matjhabeng and Nala.

Population (2018)^d: 673 024

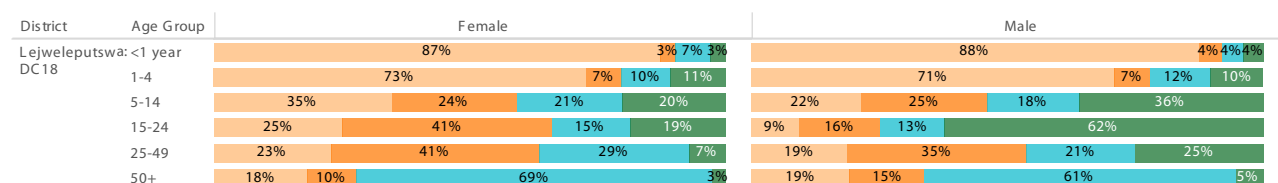
Population density (2018): 20.8 persons per km²

Estimated medical scheme coverage (2018): 12.0%

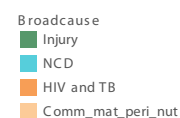
Burden of disease profile

For the percentage of deaths by broad cause, deaths are classified into four groups, namely: (i) injuries; (ii) non-communicable diseases; (iii) HIV and TB; and (iv) communicable diseases together with maternal, perinatal and nutritional conditions. Data are given by gender and age group for the period 2013 - 2015.

Percentage of deaths by broad cause, 2013 - 2015



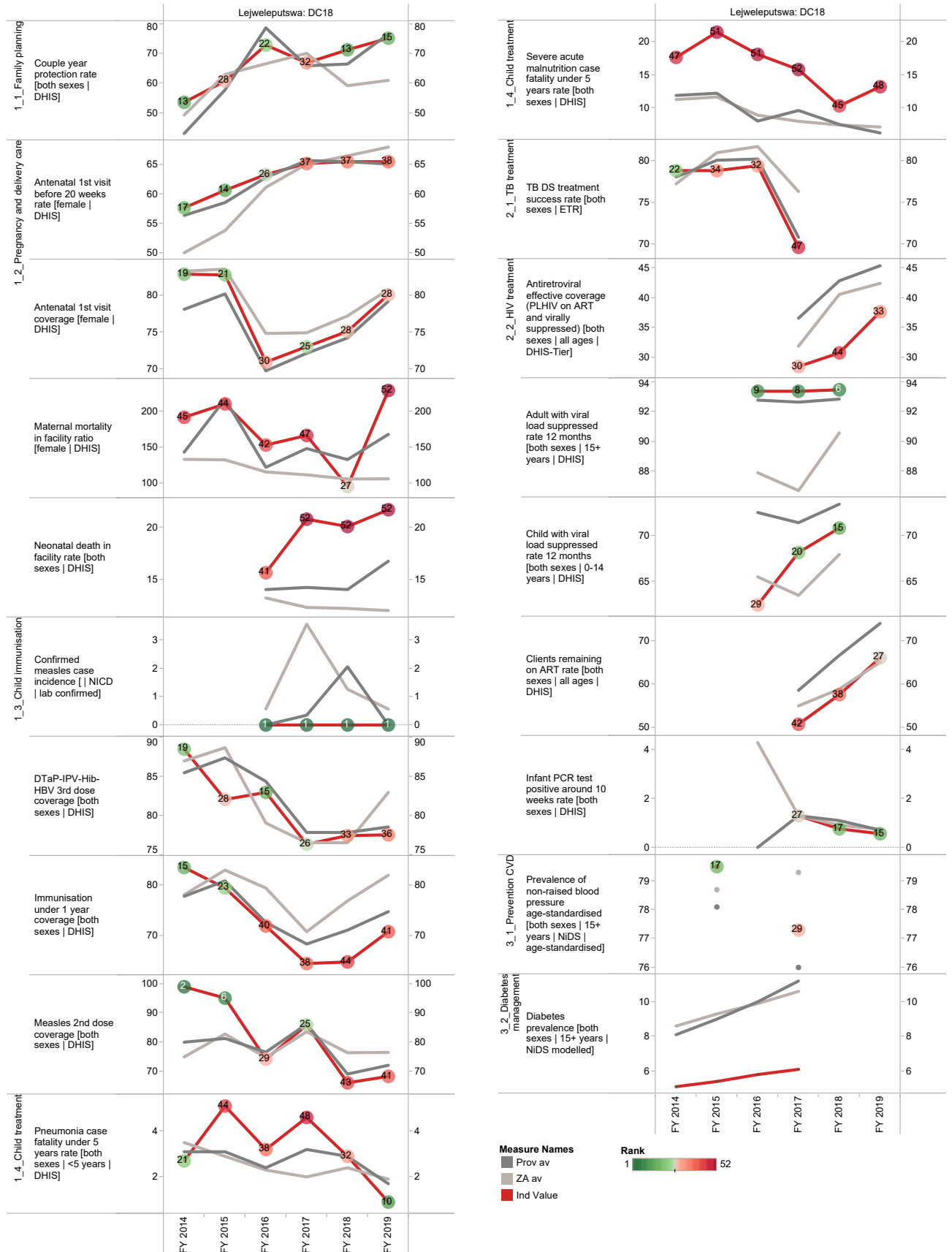
Source: Stats SA.



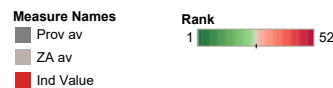
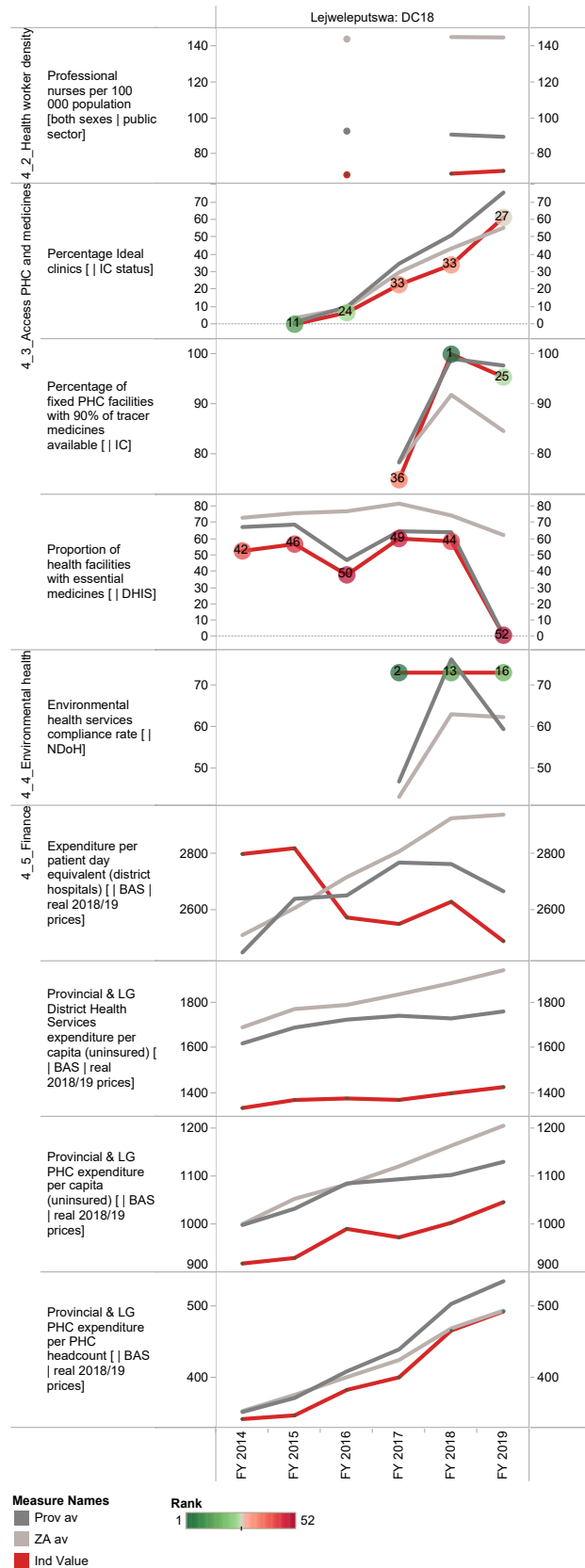
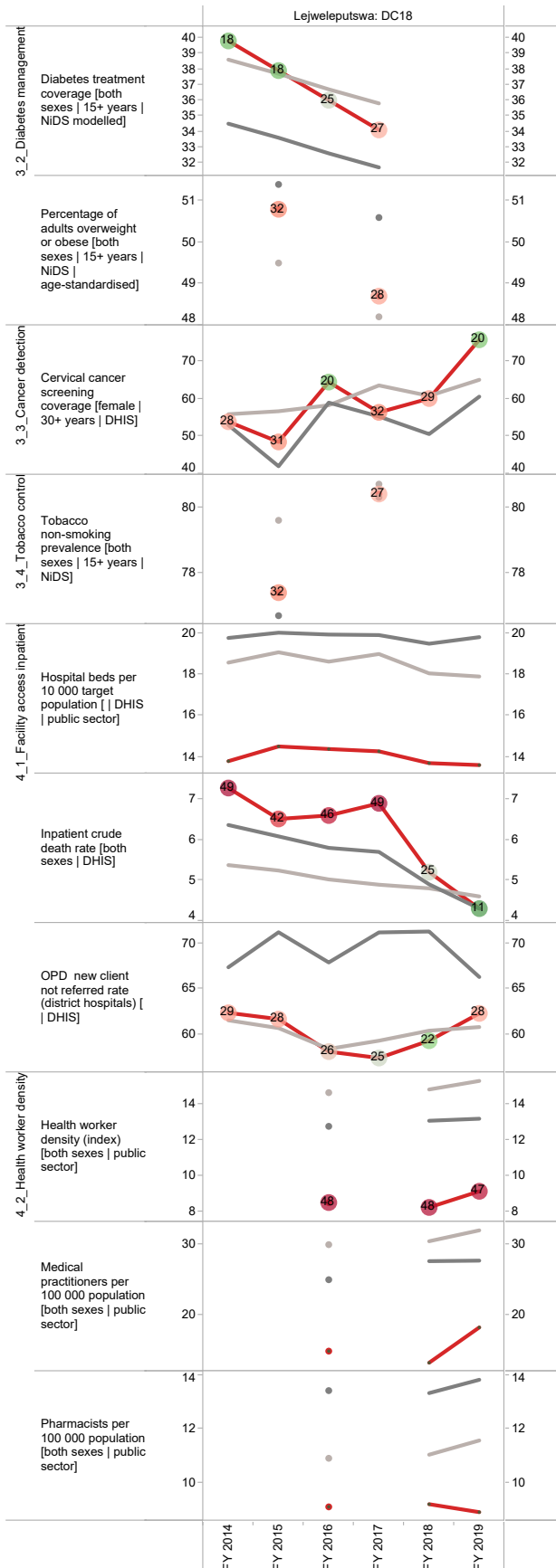
^c The Local Government Handbook South Africa 2017. A complete guide to municipalities in South Africa. Seventh edition. Accessible at: www.municipalities.co.za.

^d Mid-Year Population Estimates 2018, Stats SA.

Annual trends, 2013/14 - 2018/19



Section B: Profile Free State Province



Thabo Mofutsanyana District Municipality (DC19)

The Thabo Mofutsanyana District Municipality^e is a Category C municipality located in the eastern Free State Province, and borders on Lesotho. It comprises six local municipalities: Setsoto, Dihlabeng, Nketoana, Maluti-A-Phofung, Phumelela and Mantsopa.

Population (2018)^f: 792 608

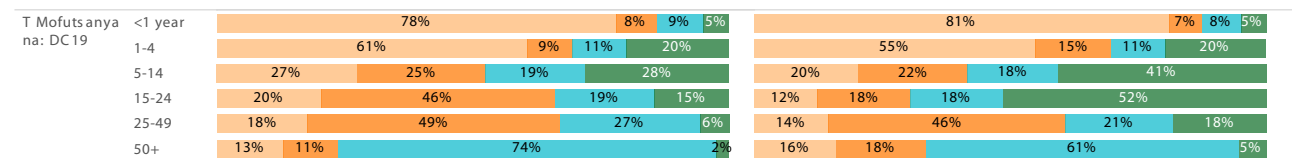
Population density (2018): 24.2 persons per km²

Estimated medical scheme coverage (2018): 9.2%

Burden of disease profile

For the percentage of deaths by broad cause, deaths are classified into four groups, namely: (i) injuries; (ii) non-communicable diseases; (iii) HIV and TB; and (iv) communicable diseases together with maternal, perinatal and nutritional conditions. Data are given by gender and age group for the period 2013 - 2015.

Percentage of deaths by broad cause, 2013 - 2015



Source: Stats SA.

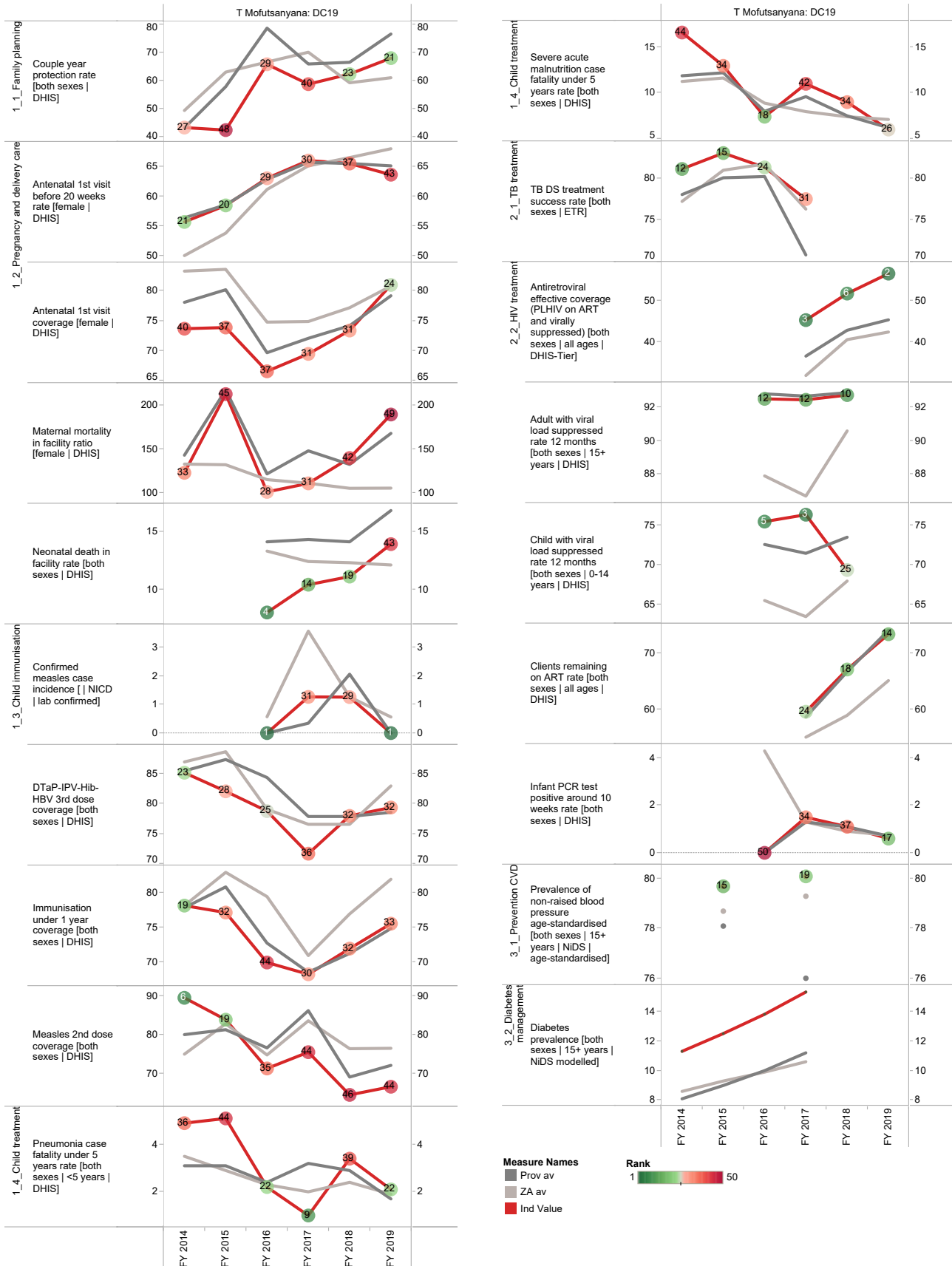
Broadcause
■ Injury
■ NCD
■ HIV and TB
■ Comm_mat_peri_nut

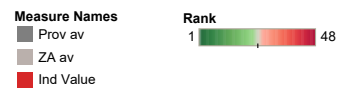
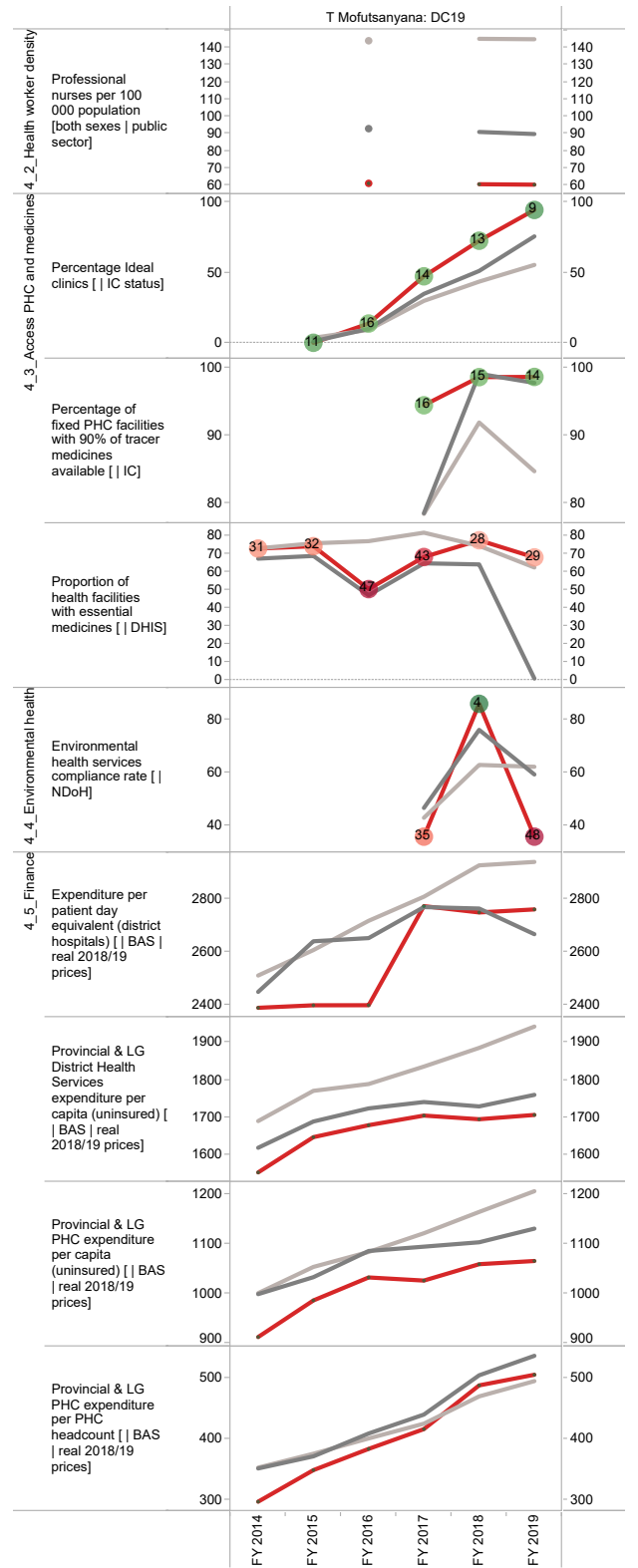
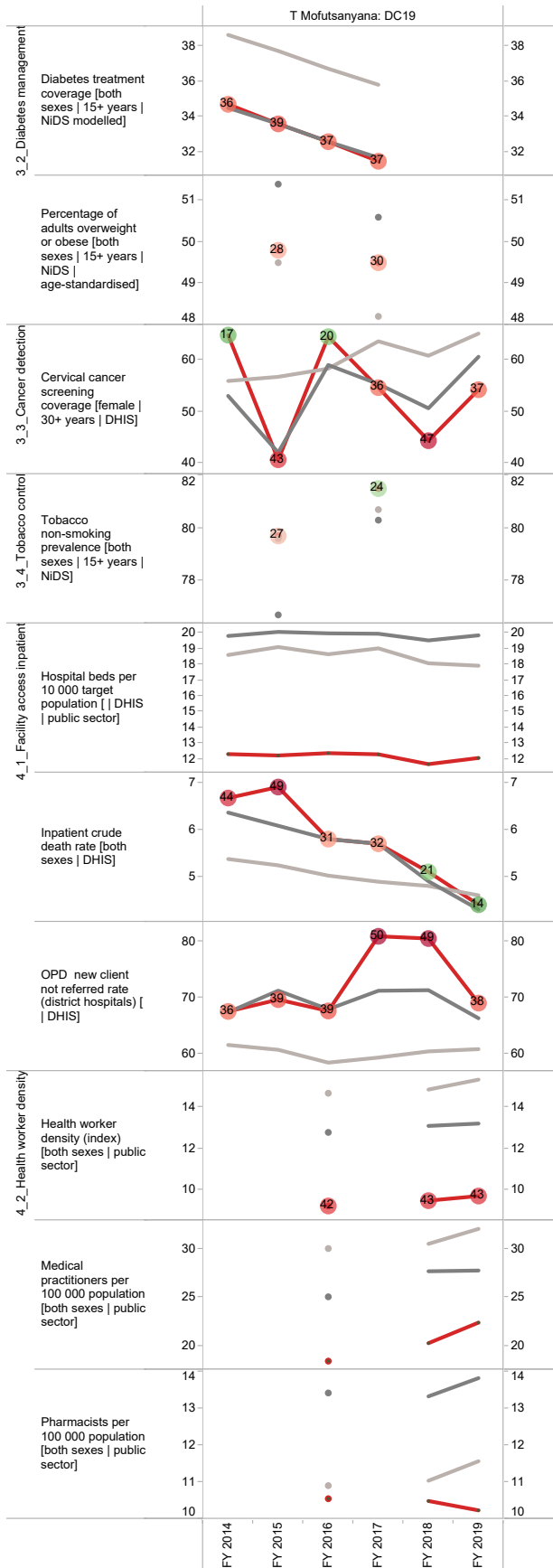
^e The Local Government Handbook South Africa 2017. A complete guide to municipalities in South Africa. Seventh edition. Accessible at: www.municipalities.co.za.

^f Mid-Year Population Estimates 2018, Stats SA.

Section B: Profile Free State Province

Annual trends, 2013/14 - 2018/19





Fezile Dabi District Municipality (DC20)

The Fezile Dabi District Municipality^g is a Category C municipality. It consists of four local municipalities: Mqohaka, Metsimaholo, Ngwathe and Mafube.

Population (2018)^h: 504 761

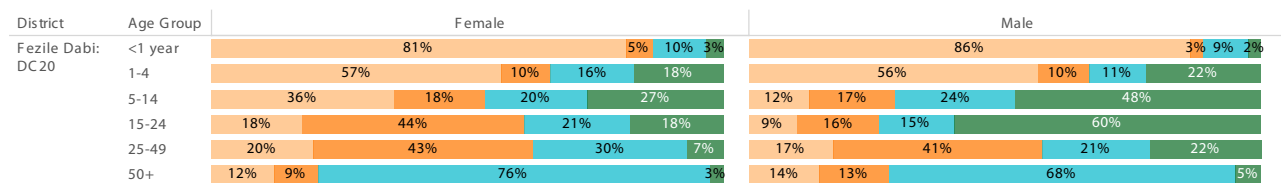
Population density (2018): 24.4 persons per km²

Estimated medical scheme coverage (2018): 13.2%

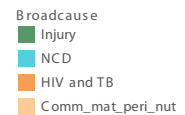
Burden of disease profile

For the percentage of deaths by broad cause, deaths are classified into four groups, namely: (i) injuries; (ii) non-communicable diseases; (iii) HIV and TB; and (iv) communicable diseases together with maternal, perinatal and nutritional conditions. Data are given by gender and age group for the period 2013 - 2015.

Percentage of deaths by broad cause, 2013 - 2015



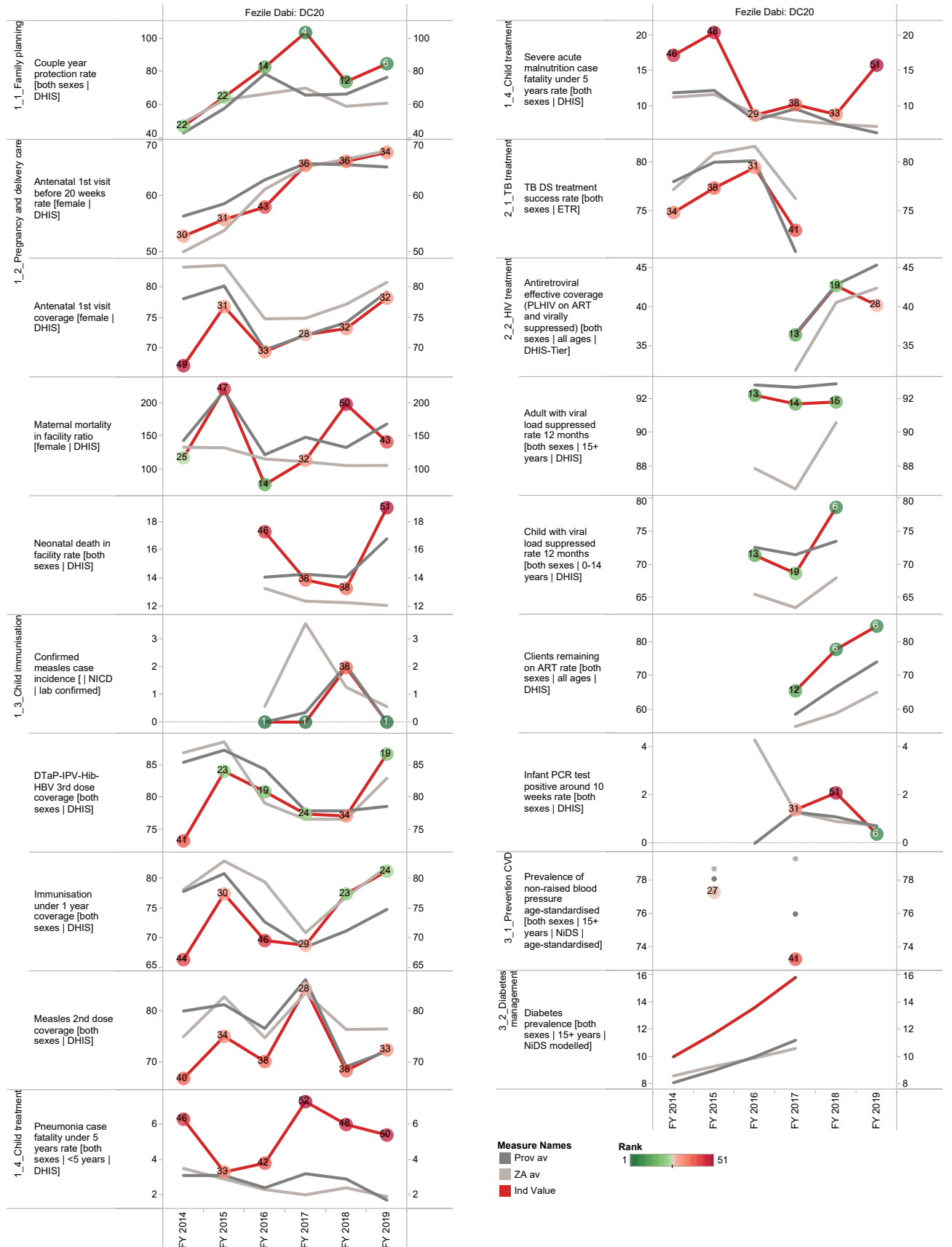
Source: Stats SA.



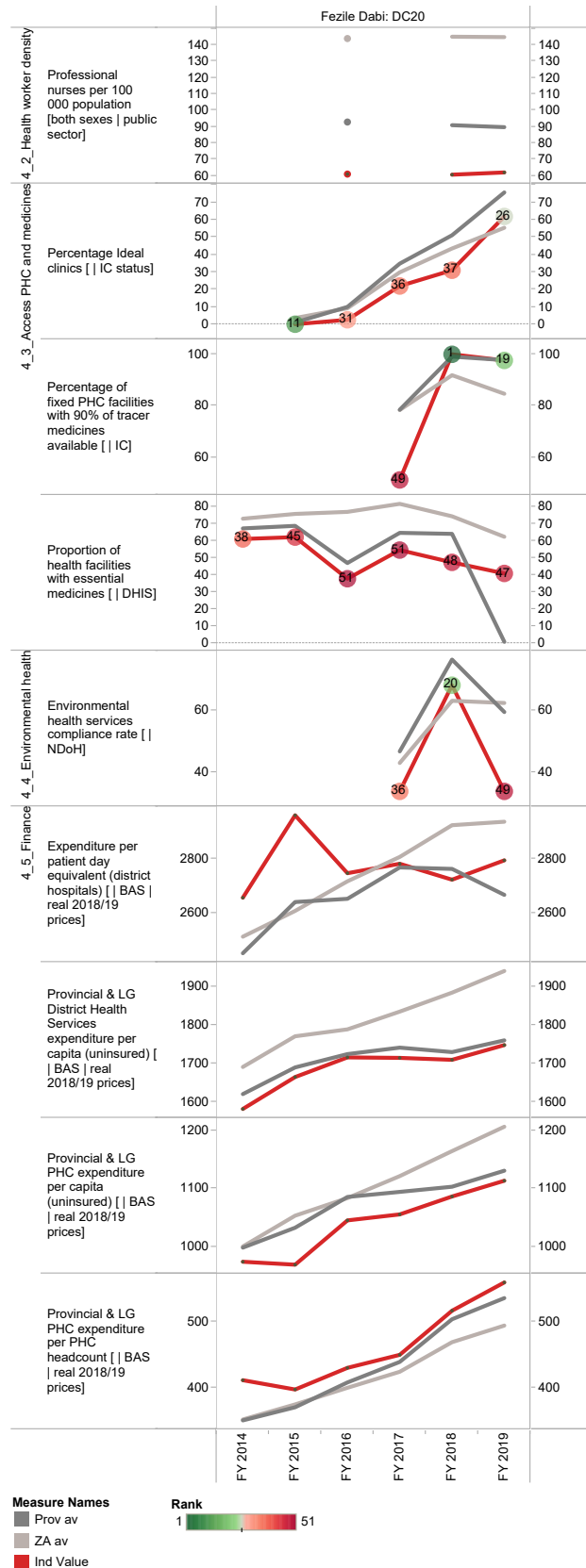
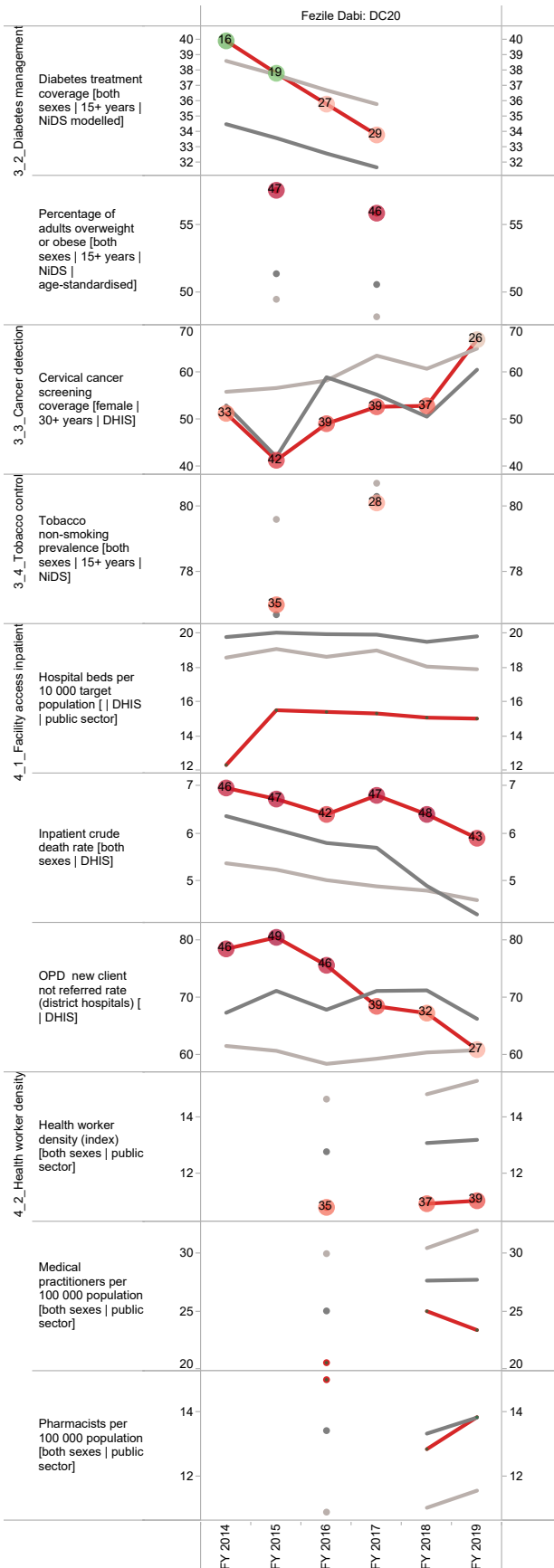
g The Local Government Handbook South Africa 2017. A complete guide to municipalities in South Africa. Seventh edition. Accessible at: www.municipalities.co.za.

h Mid-Year Population Estimates 2018, Stats SA.

Annual trends, 2013/14 - 2018/19



Section B: Profile Free State Province



Mangaung Metropolitan Municipality (MAN)

The Mangaung Metropolitan Municipalityⁱ is a Category A municipality. Mangaung Metropolitan Municipality comprises four health sub-districts, namely Bloemfontein, Botshabelo, Naledi and Thaba N'chu.

Population (2018)^j: 780 755

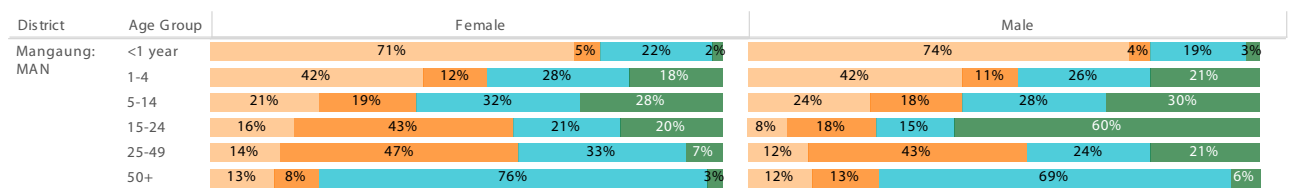
Population density (2018): 79.0 persons per km²

Estimated medical scheme coverage (2018): 20.0%

Burden of disease profile

For the percentage of deaths by broad cause, deaths are classified into four groups, namely: (i) injuries; (ii) non-communicable diseases; (iii) HIV and TB; and (iv) communicable diseases together with maternal, perinatal and nutritional conditions. Data are given by gender and age group for the period 2013 - 2015.

Percentage of deaths by broad cause, 2013 - 2015



Source: Stats SA.

Broadcause
■ Injury
■ NCD
■ HIV and TB
■ Comm_mat_peri_nut

ⁱ The Local Government Handbook South Africa 2017. A complete guide to municipalities in South Africa. Seventh edition. Accessible at: www.municipalities.co.za.

^j Mid-Year Population Estimates 2018, Stats SA.

Section B: Profile Free State Province

Annual trends, 2013/14 - 2018/19

