

# 10. Gauteng Province

## Sedibeng District Municipality (DC42)

The Sedibeng District Municipality<sup>a</sup> is a Category C municipality situated on the southern tip of the Gauteng Province and it is comprised of the Emfuleni, Lesedi and Midvaal Local Municipalities.

Population (2018)<sup>b</sup>: 984 810

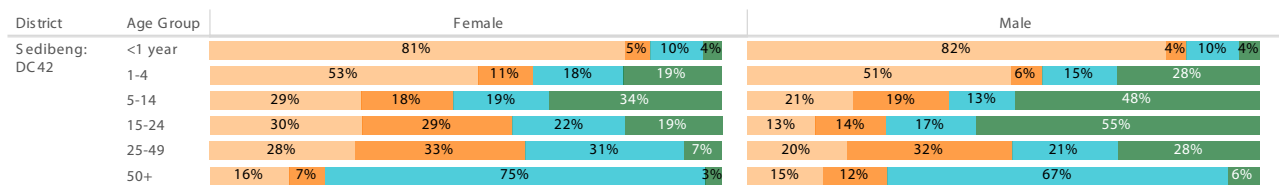
Population density (2018): 236.0 persons per km<sup>2</sup>

Estimated medical scheme coverage (2018): 20.8%

### Burden of disease profile

For the percentage of deaths by broad cause, deaths are classified into four groups, namely: (i) injuries; (ii) non-communicable diseases; (iii) HIV and TB; and (iv) communicable diseases together with maternal, perinatal and nutritional conditions. Data are given by gender and age group for the period 2013 - 2015.

### Percentage of deaths by broad cause, 2013 - 2015



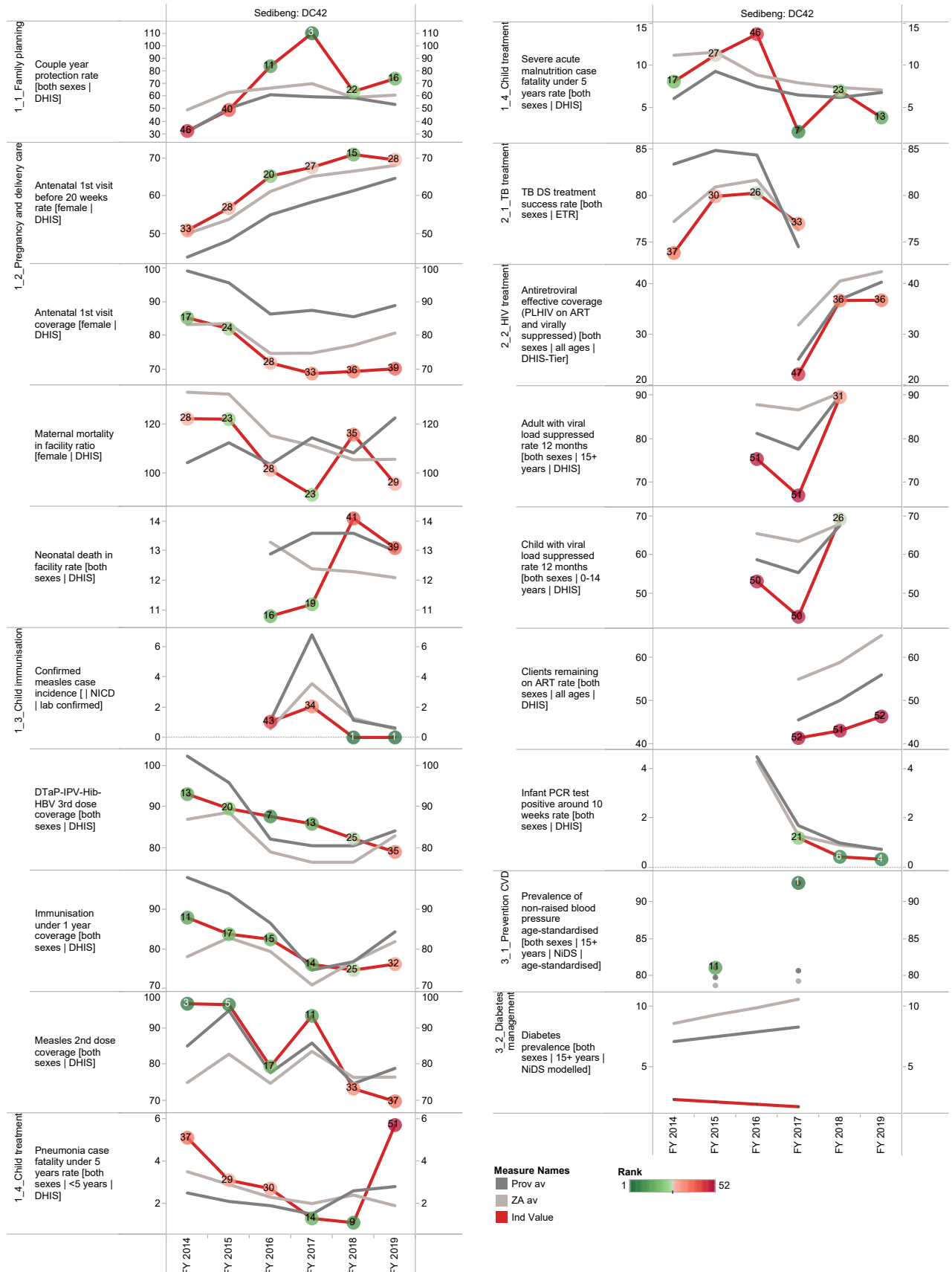
Source: Stats SA.



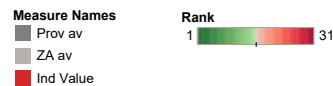
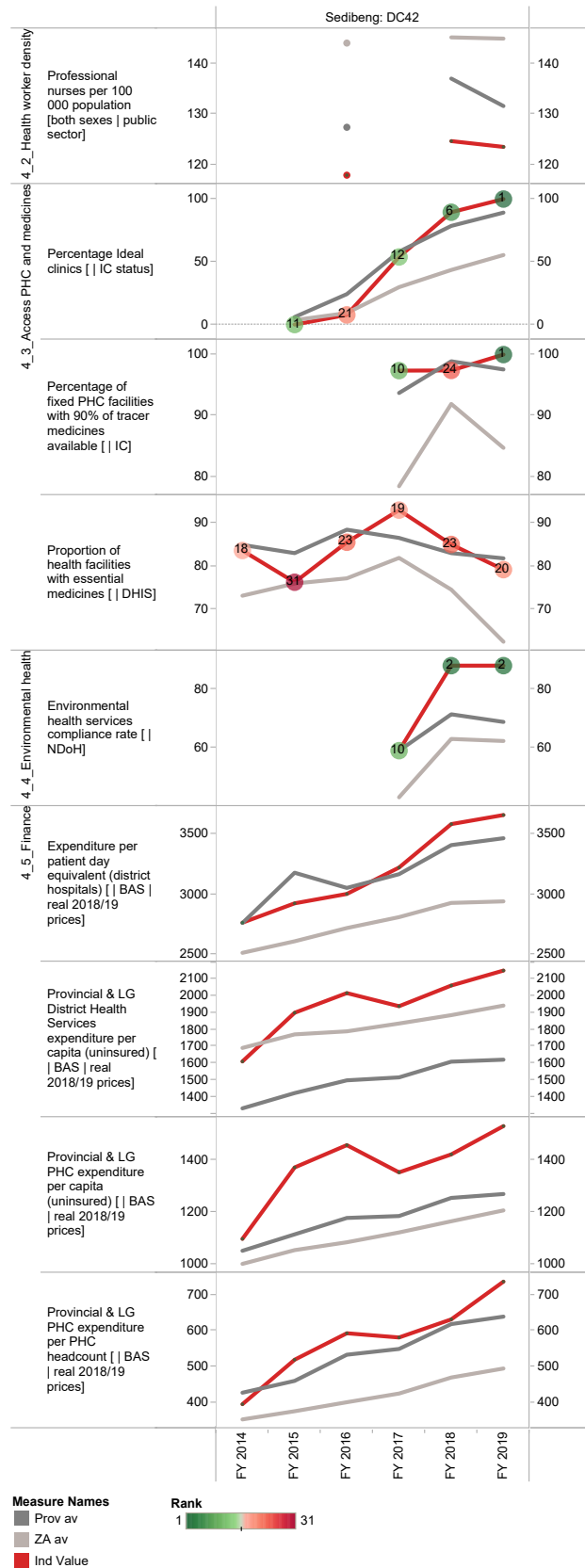
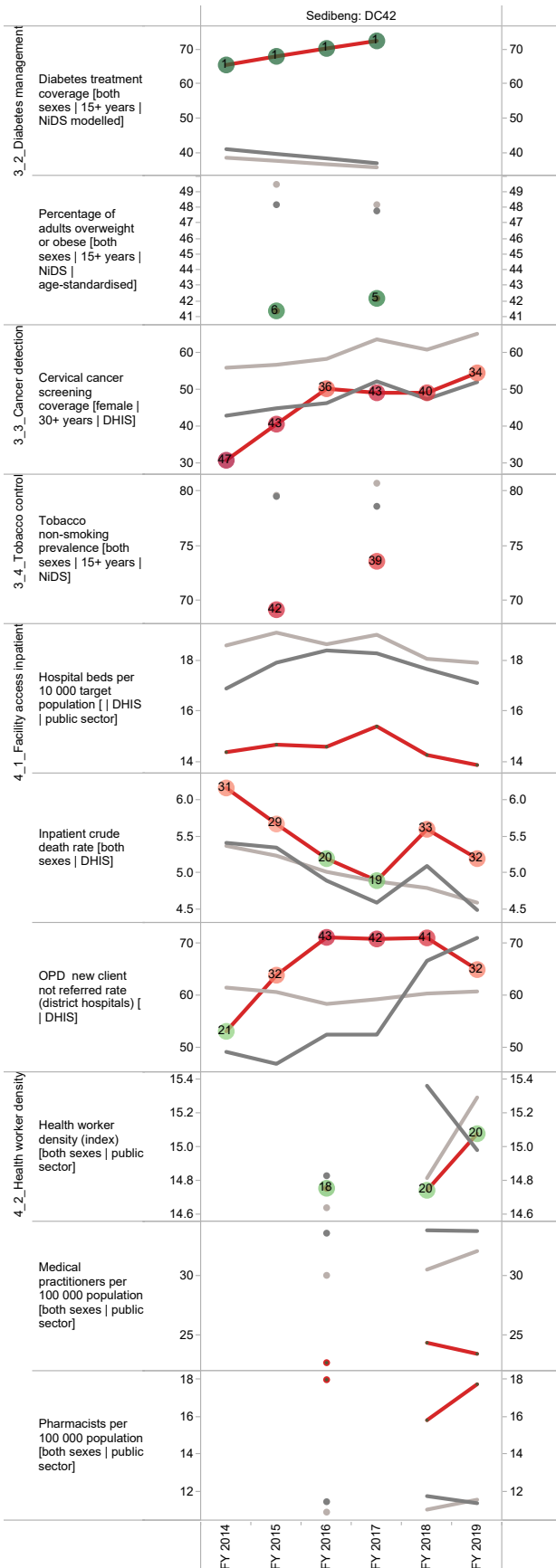
a The Local Government Handbook South Africa 2017. A complete guide to municipalities in South Africa. Seventh edition. Accessible at: [www.municipalities.co.za](http://www.municipalities.co.za).

b Mid-Year Population Estimates 2018, Stats SA.

Annual trends, 2013/14 - 2018/19



## Section B: Profile Gauteng Province



## West Rand District Municipality (DC48)

The West Rand District Municipality<sup>c</sup> is a Category C municipality located in the west of the Gauteng Province. It comprises three local municipalities: Merafong, Mogale and Rand West Cities.

**Population (2018)<sup>d</sup>:** 881 918

**Population density (2018):** 215.8 persons per km<sup>2</sup>

**Estimated medical scheme coverage (2018):** 24.1%

### Burden of disease profile

For the percentage of deaths by broad cause, deaths are classified into four groups, namely: (i) injuries; (ii) non-communicable diseases; (iii) HIV and TB; and (iv) communicable diseases together with maternal, perinatal and nutritional conditions. Data are given by gender and age group for the period 2013 - 2015.

### Percentage of deaths by broad cause, 2013 - 2015

District	Age Group	Female				Male			
West Rand: DC48	<1 year	76%				72%			
	1-4	54%	9%	18%	18%	41%	9%	24%	26%
	5-14	29%	15%	31%	25%	20%	13%	25%	42%
	15-24	23%	37%	19%	21%	10%	8%	17%	65%
	25-49	22%	39%	31%	8%	16%	34%	21%	29%
	50+	12%	7%	77%	4%	12%	11%	70%	7%

Source: Stats SA.

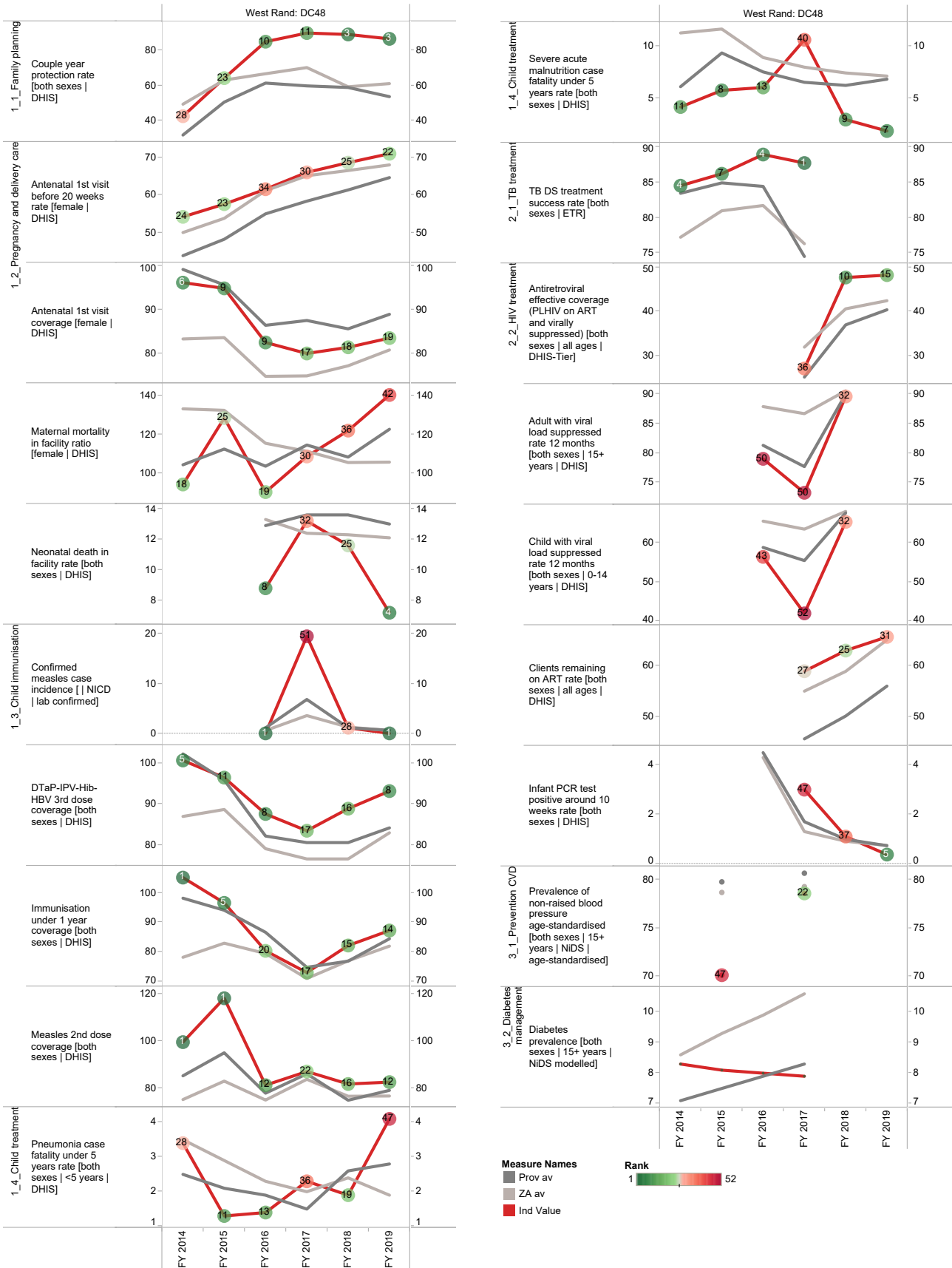
Broadcause  
■ Injury  
■ NCD  
■ HIV and TB  
■ Comm\_mat\_peri\_nut

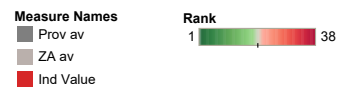
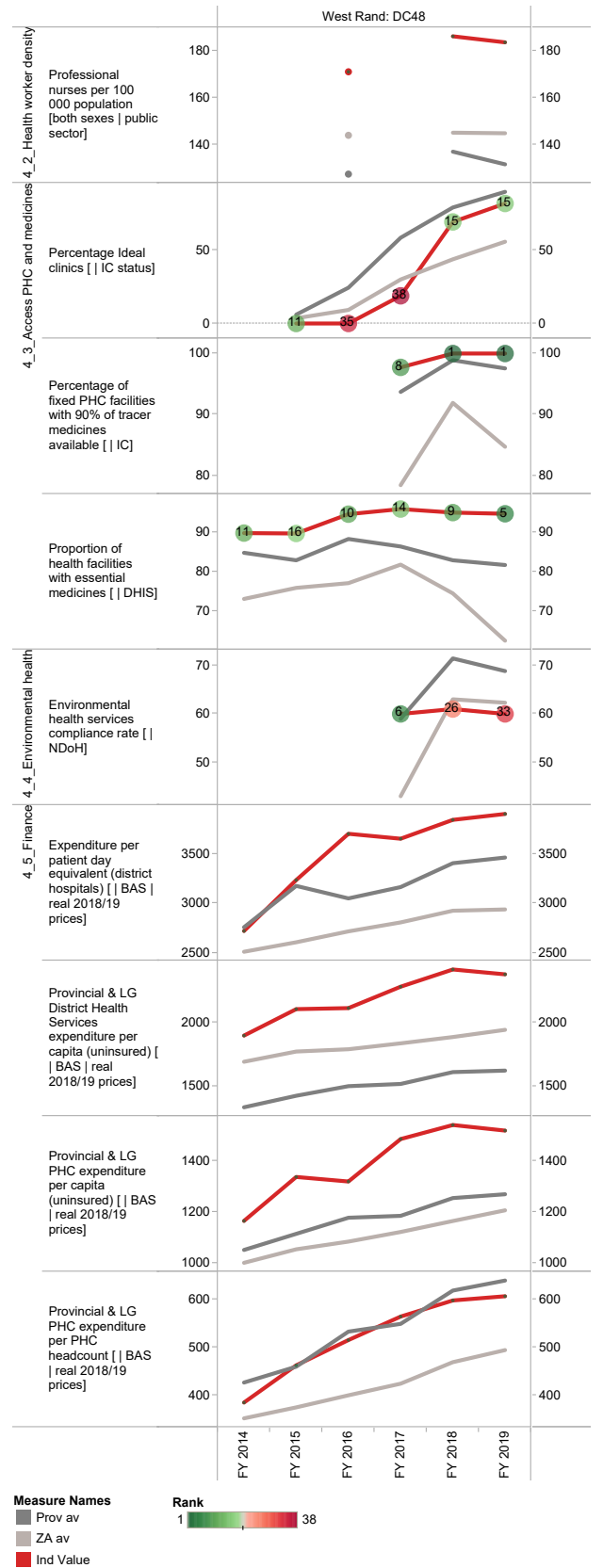
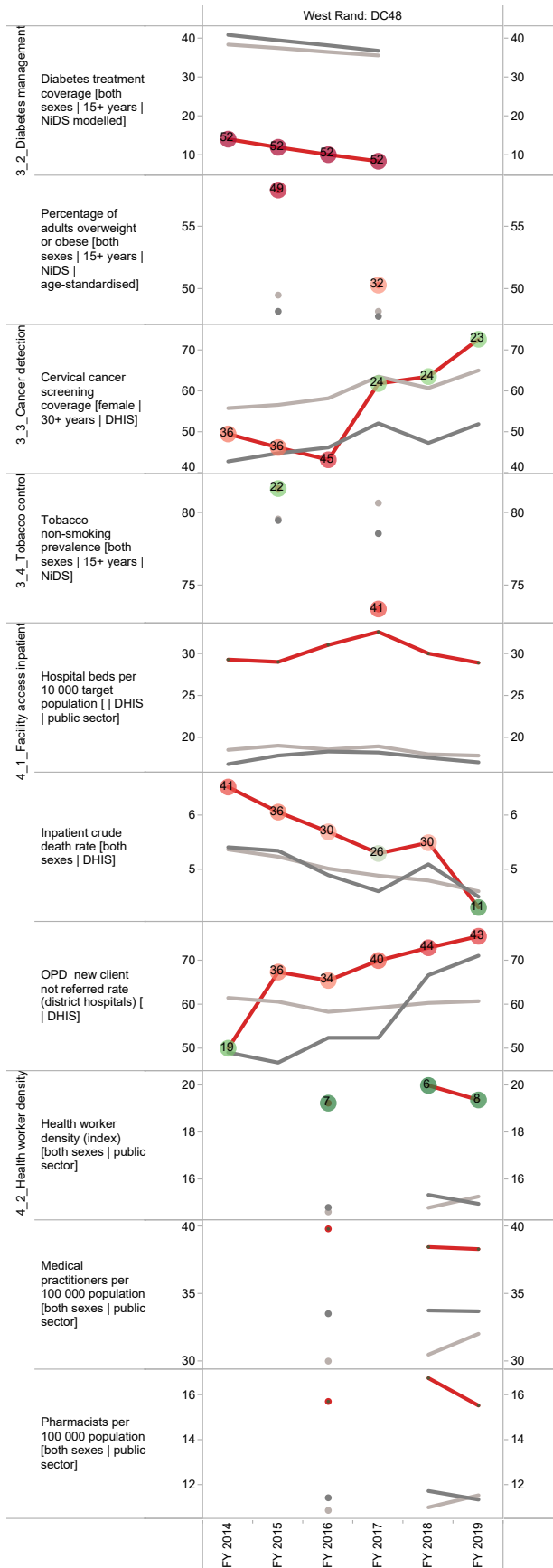
<sup>c</sup> The Local Government Handbook South Africa 2017. A complete guide to municipalities in South Africa. Seventh edition. Accessible at: [www.municipalities.co.za](http://www.municipalities.co.za).

<sup>d</sup> Mid-Year Population Estimates 2018, Stats SA.

## Section B: Profile Gauteng Province

### Annual trends, 2013/14 - 2018/19





## Ekurhuleni Metropolitan Municipality (EKU)

The City of Ekurhuleni Metropolitan Municipality<sup>e</sup> is a Category A municipality in Gauteng Province. It comprises six health sub-districts, namely Ekurhuleni East 1 and East 2, Ekurhuleni North 1 and North 2, and Ekurhuleni South 1 and South 2.

Population (2018)<sup>f</sup>: 3 561 977

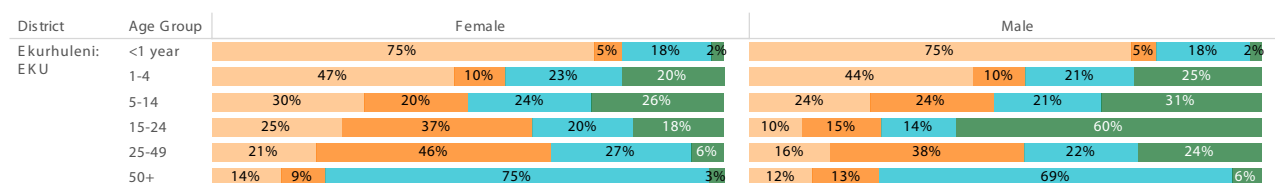
Population density (2018): 1 803.5 persons per km<sup>2</sup>

Estimated medical scheme coverage (2018): 23.8%

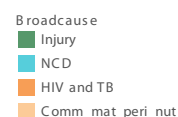
### Burden of disease profile

For the percentage of deaths by broad cause, deaths are classified into four groups, namely: (i) injuries; (ii) non-communicable diseases; (iii) HIV and TB; and (iv) communicable diseases together with maternal, perinatal and nutritional conditions. Data are given by gender and age group for the period 2013 - 2015.

### Percentage of deaths by broad cause, 2013 - 2015



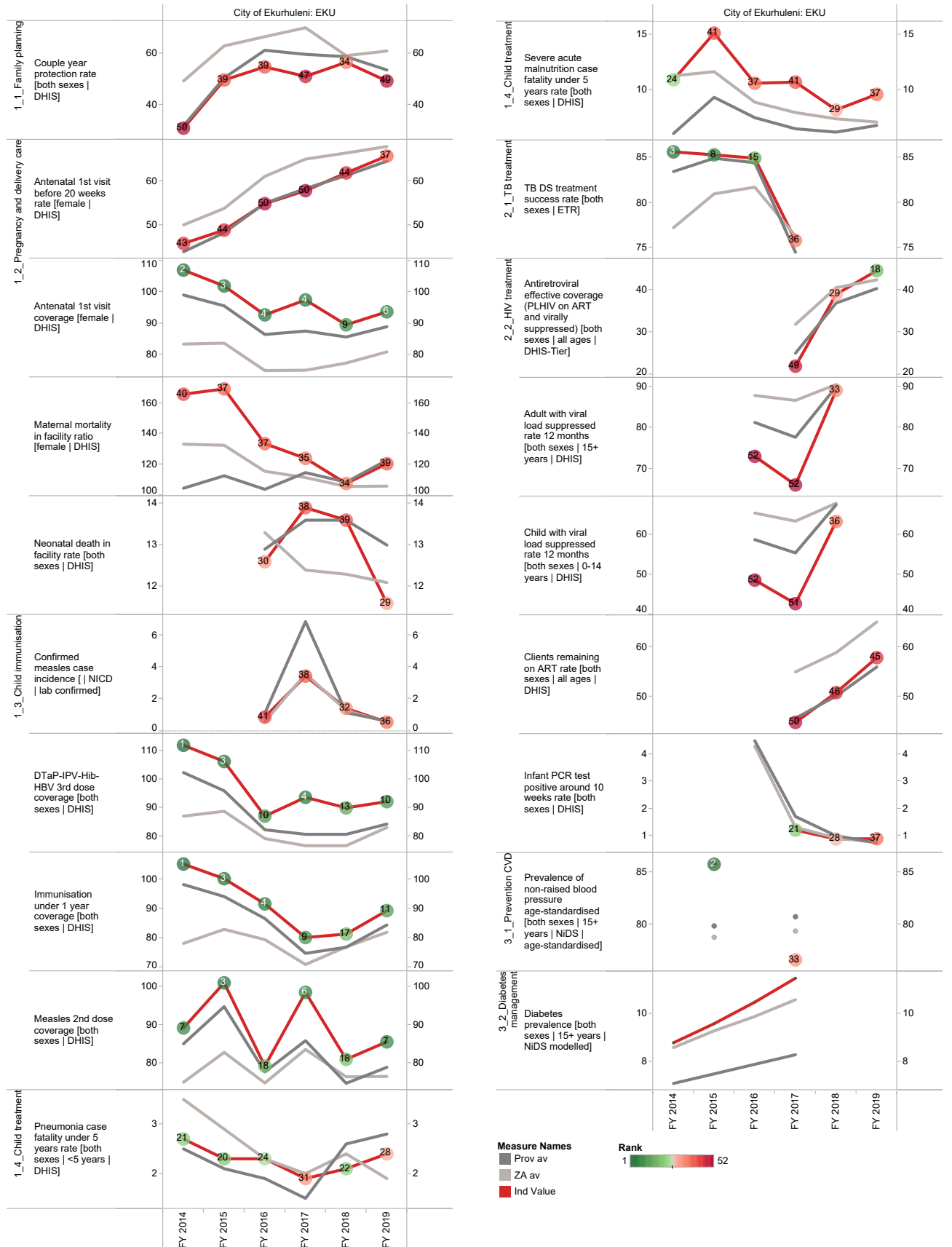
Source: Stats SA.



<sup>e</sup> The Local Government Handbook South Africa 2017. A complete guide to municipalities in South Africa. Seventh edition. Accessible at: [www.municipalities.co.za](http://www.municipalities.co.za).

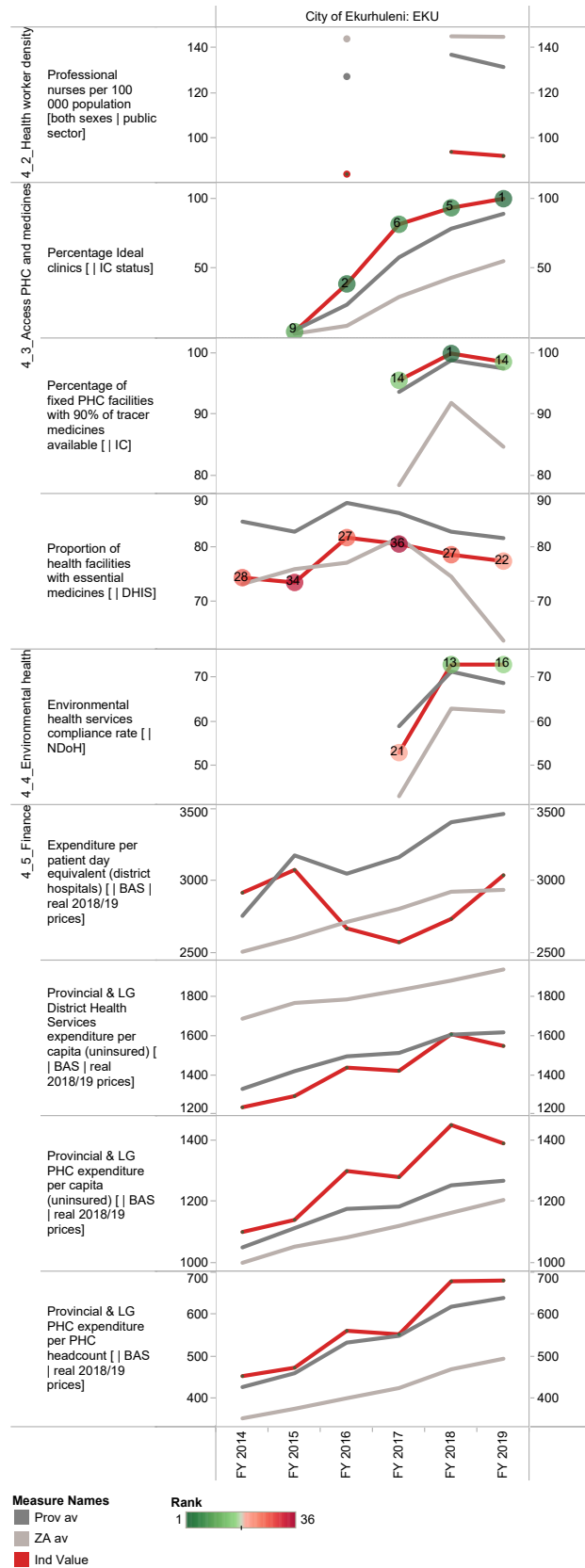
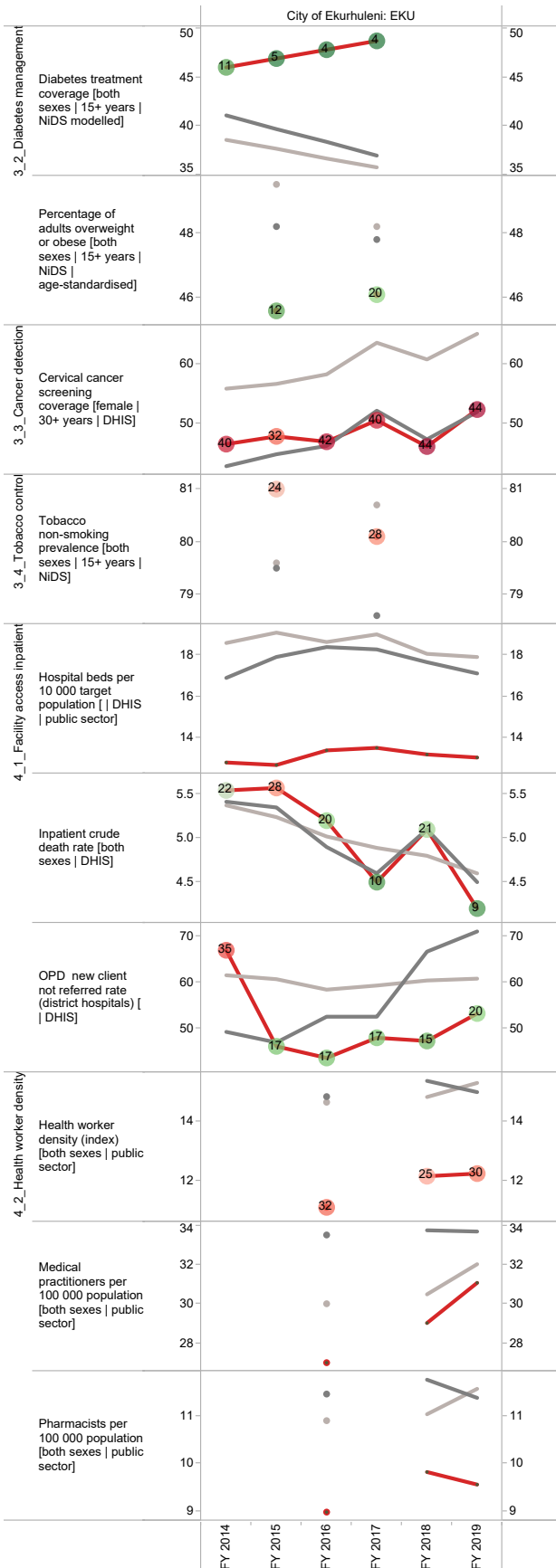
<sup>f</sup> Mid-Year Population Estimates 2018, Stats SA.

Annual trends, 2013/14 - 2018/19





## Section B: Profile Gauteng Province



## Johannesburg Metropolitan Municipality (JHB)

The City of Johannesburg Metropolitan Municipality<sup>g</sup> is a Category A municipality in Gauteng Province. It is divided into seven health sub-districts, named Johannesburg Sub-district A to Johannesburg Sub-district G.

**Population (2018)<sup>h</sup>:** 5 201 673

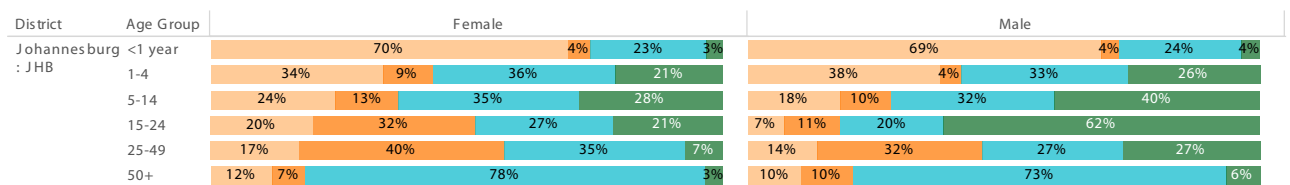
**Population density (2018):** 3 162.1 persons per km<sup>2</sup>

**Estimated medical scheme coverage (2018):** 22.2%

### Burden of disease profile

For the percentage of deaths by broad cause, deaths are classified into four groups, namely: (i) injuries; (ii) non-communicable diseases; (iii) HIV and TB; and (iv) communicable diseases together with maternal, perinatal and nutritional conditions. Data are given by gender and age group for the period 2013 - 2015.

### Percentage of deaths by broad cause, 2013 - 2015



Source: Stats SA.

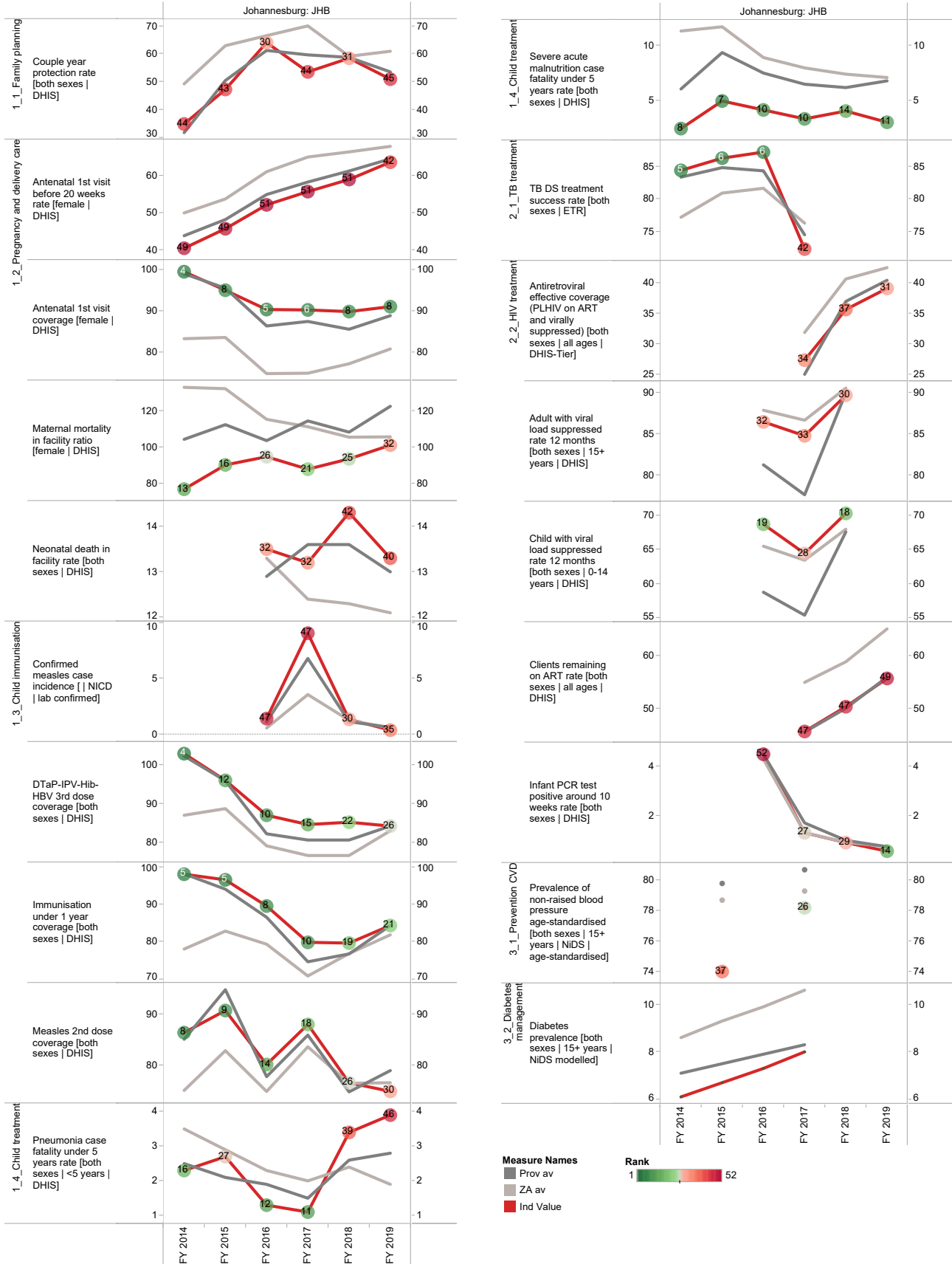
Broadcause  
■ Injury  
■ NCD  
■ HIV and TB  
■ Comm\_mat\_peri\_nut

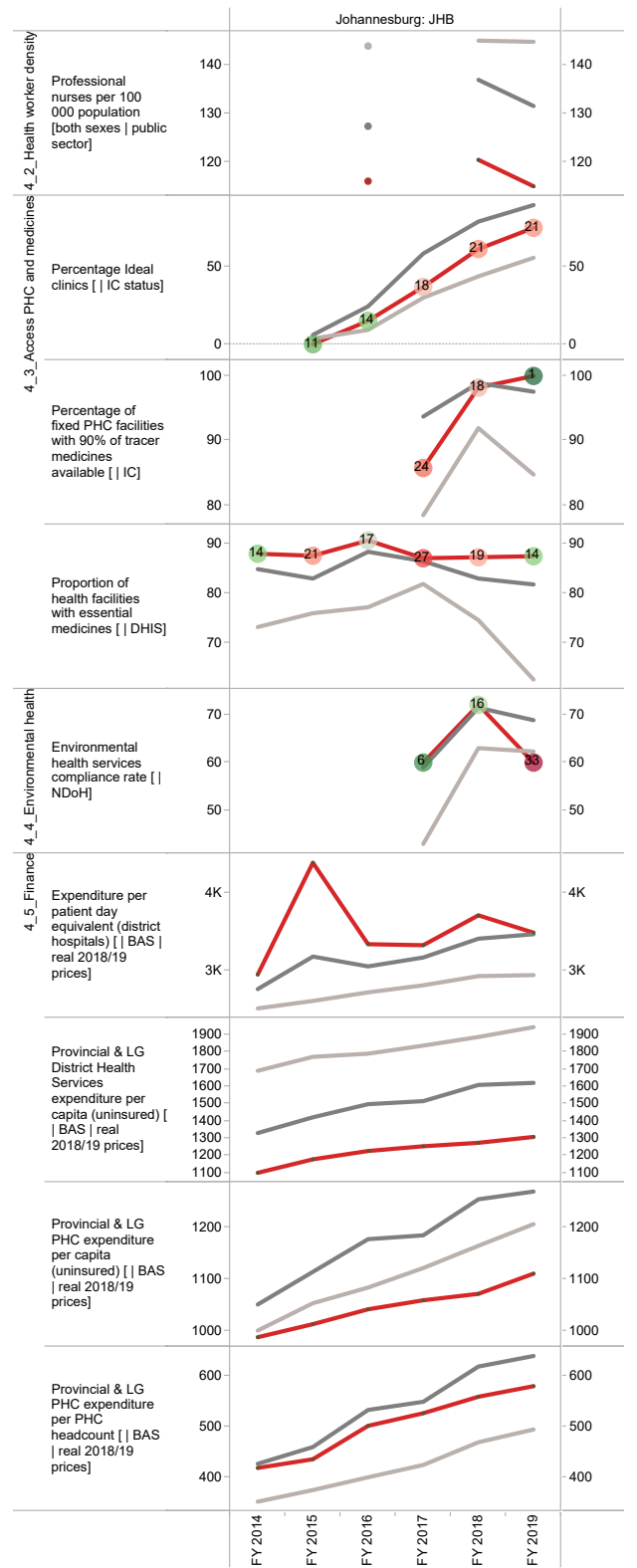
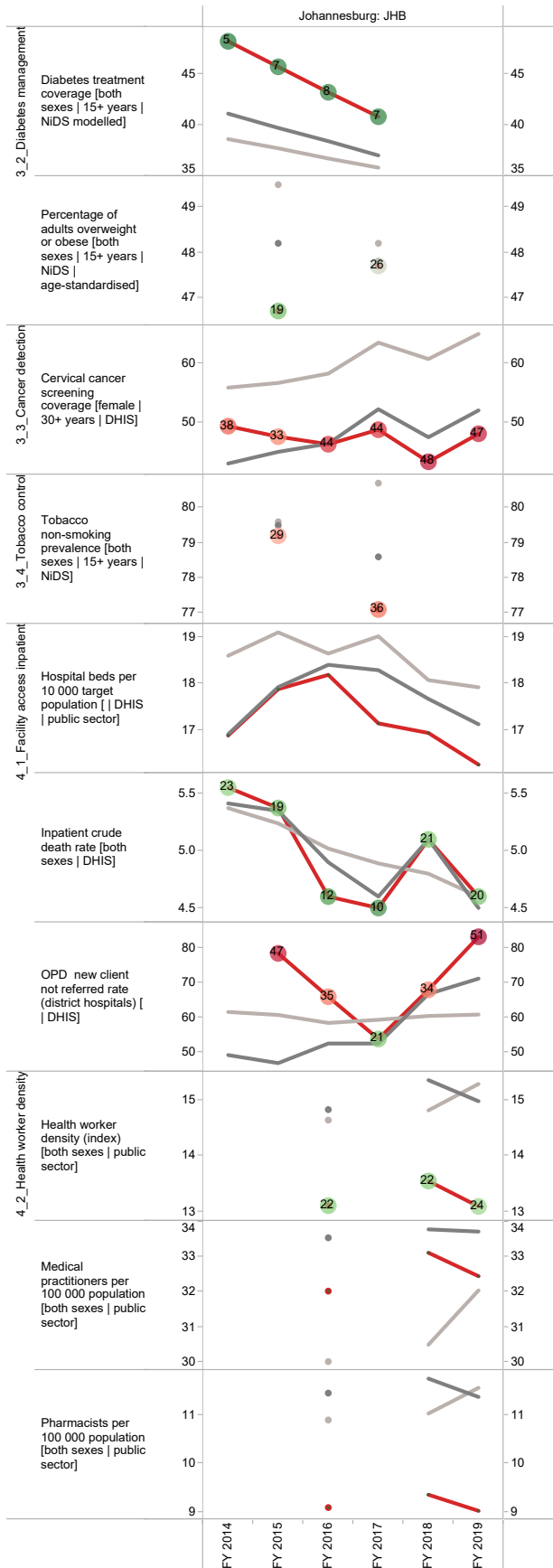
g The Local Government Handbook South Africa 2017. A complete guide to municipalities in South Africa. Seventh edition. Accessible at: [www.municipalities.co.za](http://www.municipalities.co.za).

h Mid-Year Population Estimates 2018, Stats SA.

## Section B: Profile Gauteng Province

### Annual trends, 2013/14 - 2018/19





Measure Names  
 Prov av  
 ZA av  
 Ind Value



## Tshwane Metropolitan Municipality (TSH)

The City of Tshwane Metropolitan Municipality<sup>i</sup> is a Category A municipality situated in the Gauteng Province. It comprises seven health sub-districts, named Tshwane health sub-district 1 to Tshwane health sub-district 7.

Population (2018)<sup>j</sup>: 3 473 874

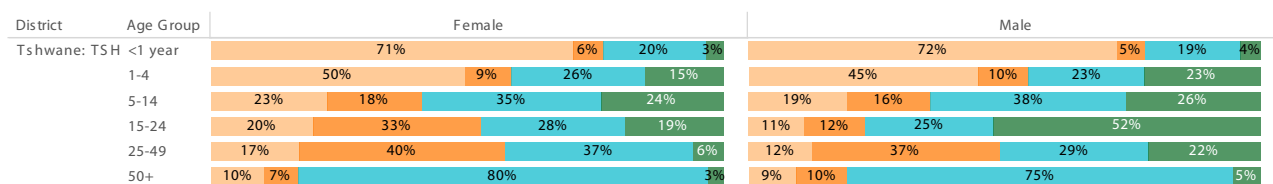
Population density (2018): 551.6 persons per km<sup>2</sup>

Estimated medical scheme coverage (2018): 30.6%

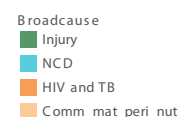
### Burden of disease profile

For the percentage of deaths by broad cause, deaths are classified into four groups, namely: (i) injuries; (ii) non-communicable diseases; (iii) HIV and TB; and (iv) communicable diseases together with maternal, perinatal and nutritional conditions. Data are given by gender and age group for the period 2013 - 2015.

### Percentage of deaths by broad cause, 2013 - 2015



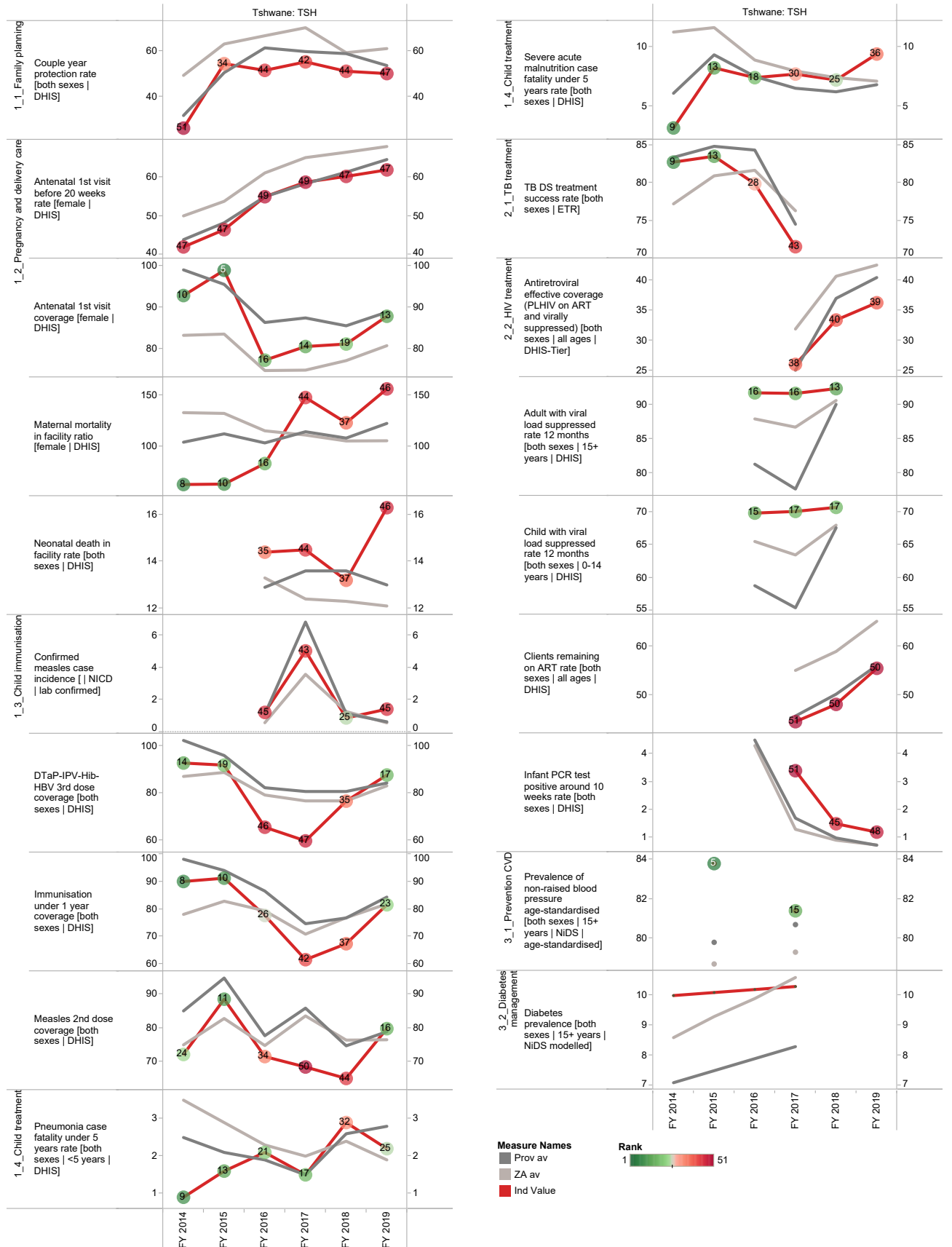
Source: Stats SA.



<sup>i</sup> The Local Government Handbook South Africa 2017. A complete guide to municipalities in South Africa. Seventh edition. Accessible at: [www.municipalities.co.za](http://www.municipalities.co.za).

<sup>j</sup> Mid-Year Population Estimates 2018, Stats SA.

Annual trends, 2013/14 - 2018/19



## Section B: Profile Gauteng Province

