

12. Limpopo Province

Mopani District Municipality (DC33)

The Mopani District Municipality^a is a Category C municipality located within the north-eastern quadrant of the Limpopo Province. It is bordered in the north by Zimbabwe and in the east by Mozambique. The district consists of five local municipalities: Ba-Phalaborwa, Greater Giyani, Greater Letaba, Greater Tzaneen and Maruleng.

Population (2018)^b: 1 225 473

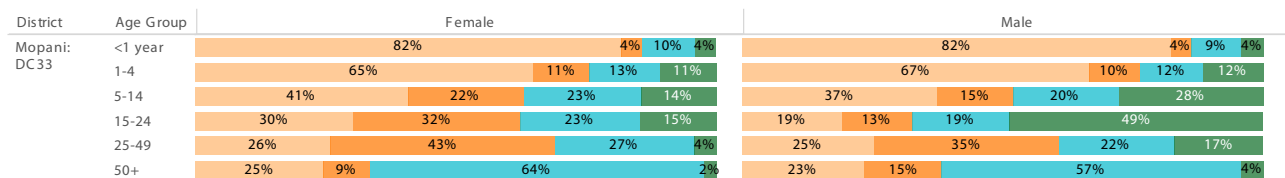
Population density (2018): 61.2 persons per km²

Estimated medical scheme coverage (2018): 6.8%

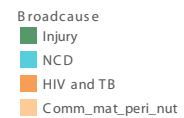
Burden of disease profile

For the percentage of deaths by broad cause, deaths are classified into four groups, namely: (i) injuries; (ii) non-communicable diseases; (iii) HIV and TB; and (iv) communicable diseases together with maternal, perinatal and nutritional conditions. Data are given by gender and age group for the period 2013 - 2015.

Percentage of deaths by broad cause, 2013 - 2015



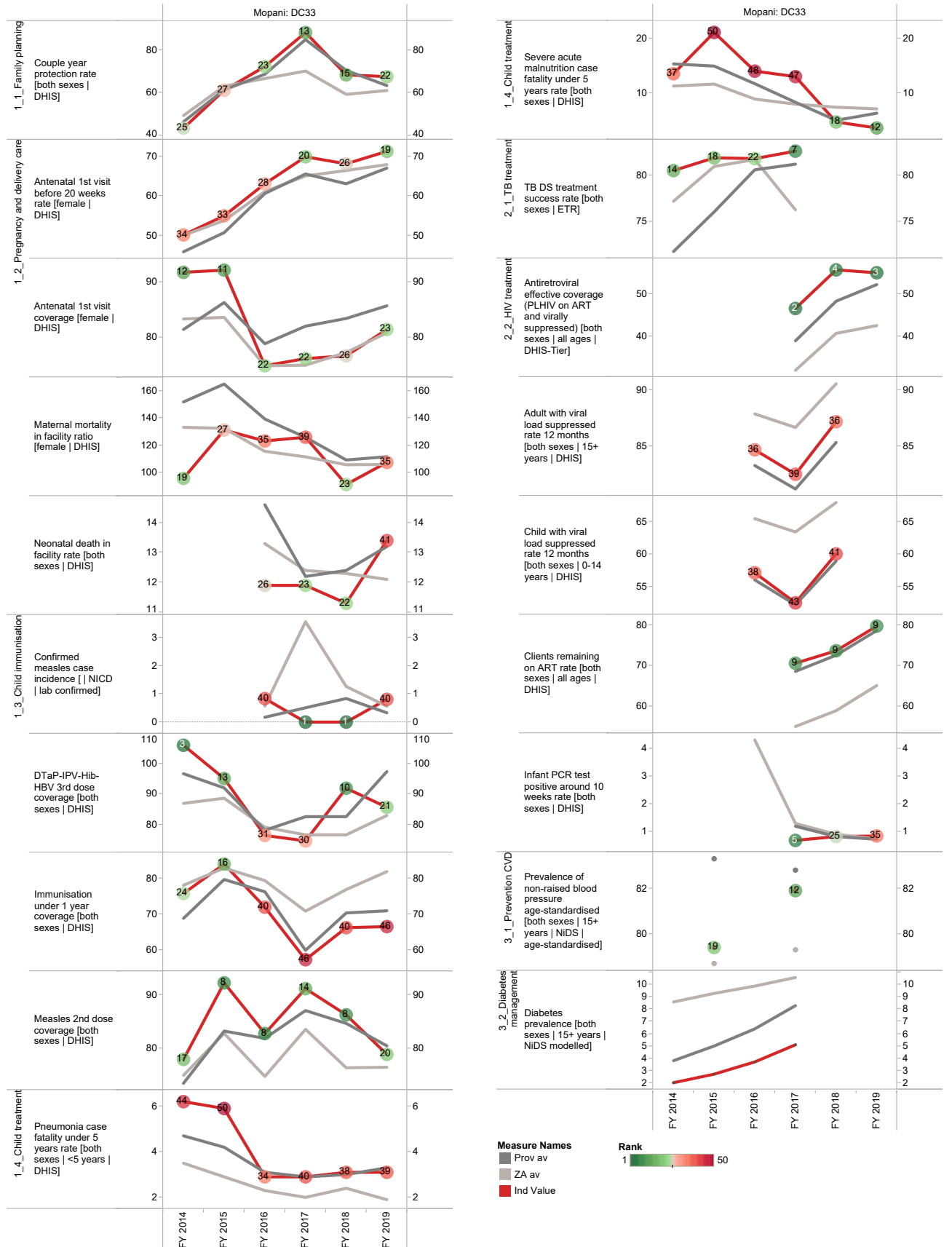
Source: Stats SA.



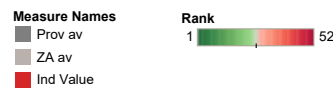
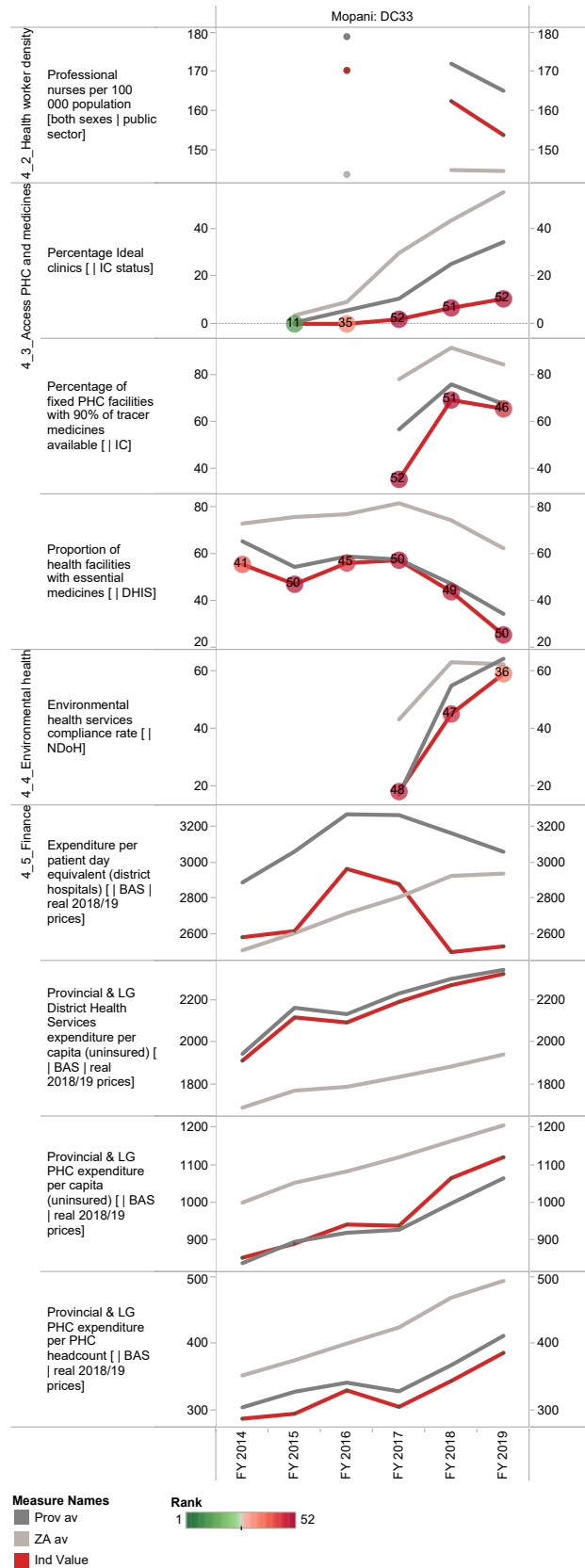
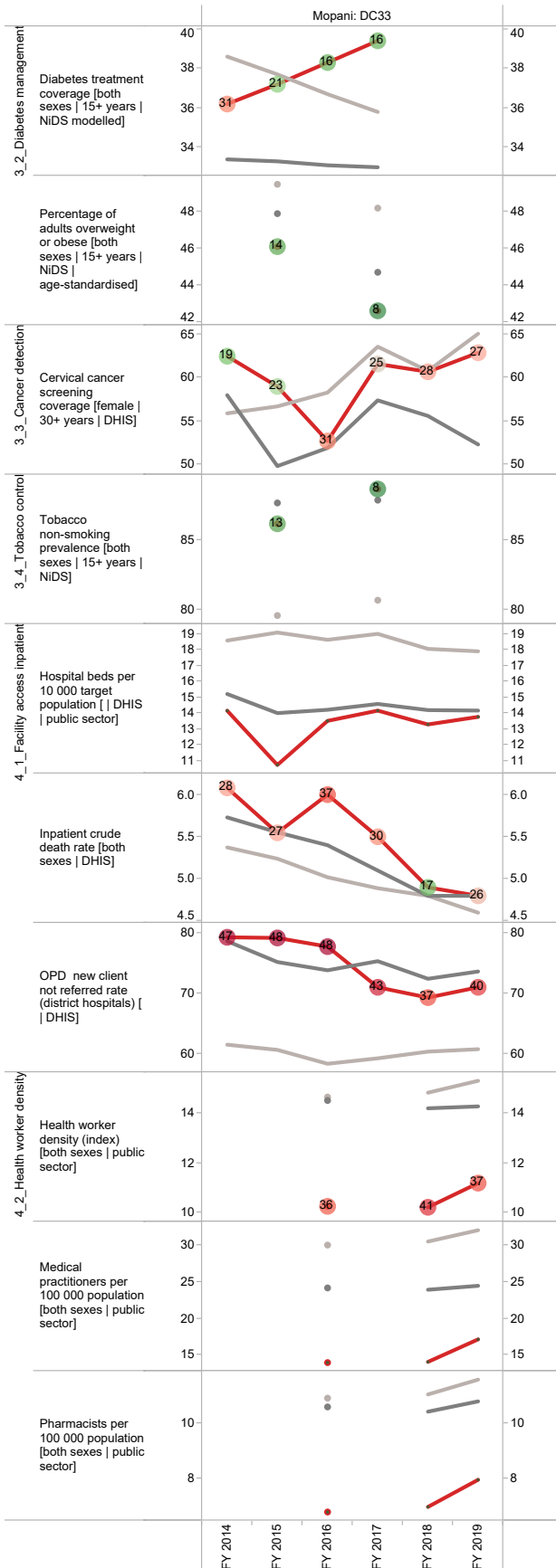
a The Local Government Handbook South Africa 2017. A complete guide to municipalities in South Africa. Seventh edition. Accessible at: www.municipalities.co.za.

b Mid-Year Population Estimates 2018, Stats SA.

Annual trends, 2013/14 - 2018/19



Section B: Profile Limpopo Province



Vhembe District Municipality (DC34)

The Vhembe District Municipality^c is a Category C municipality located in the northern part of the Limpopo Province. It shares borders with Zimbabwe and Botswana in the north-west and Mozambique in the south-east through the Kruger National Park. It is comprised of four local municipalities: Musina, Thulamela, Makhado and Collins Chabane.

Population (2018)^d: 1 457 007

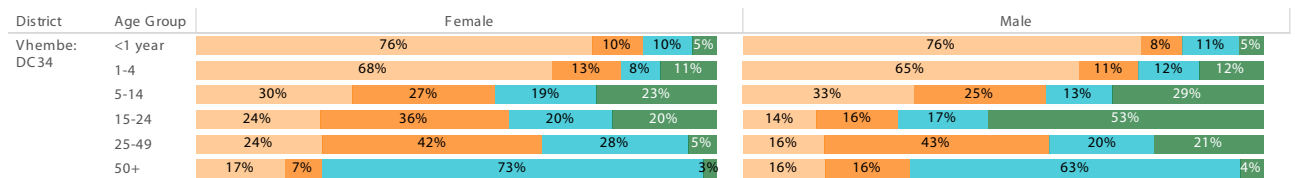
Population density (2018): 56.9 persons per km²

Estimated medical scheme coverage (2018): 6.6%

Burden of disease profile

For the percentage of deaths by broad cause, deaths are classified into four groups, namely: (i) injuries; (ii) non-communicable diseases; (iii) HIV and TB; and (iv) communicable diseases together with maternal, perinatal and nutritional conditions. Data are given by gender and age group for the period 2013 - 2015.

Percentage of deaths by broad cause, 2013 - 2015



Source: Stats SA.

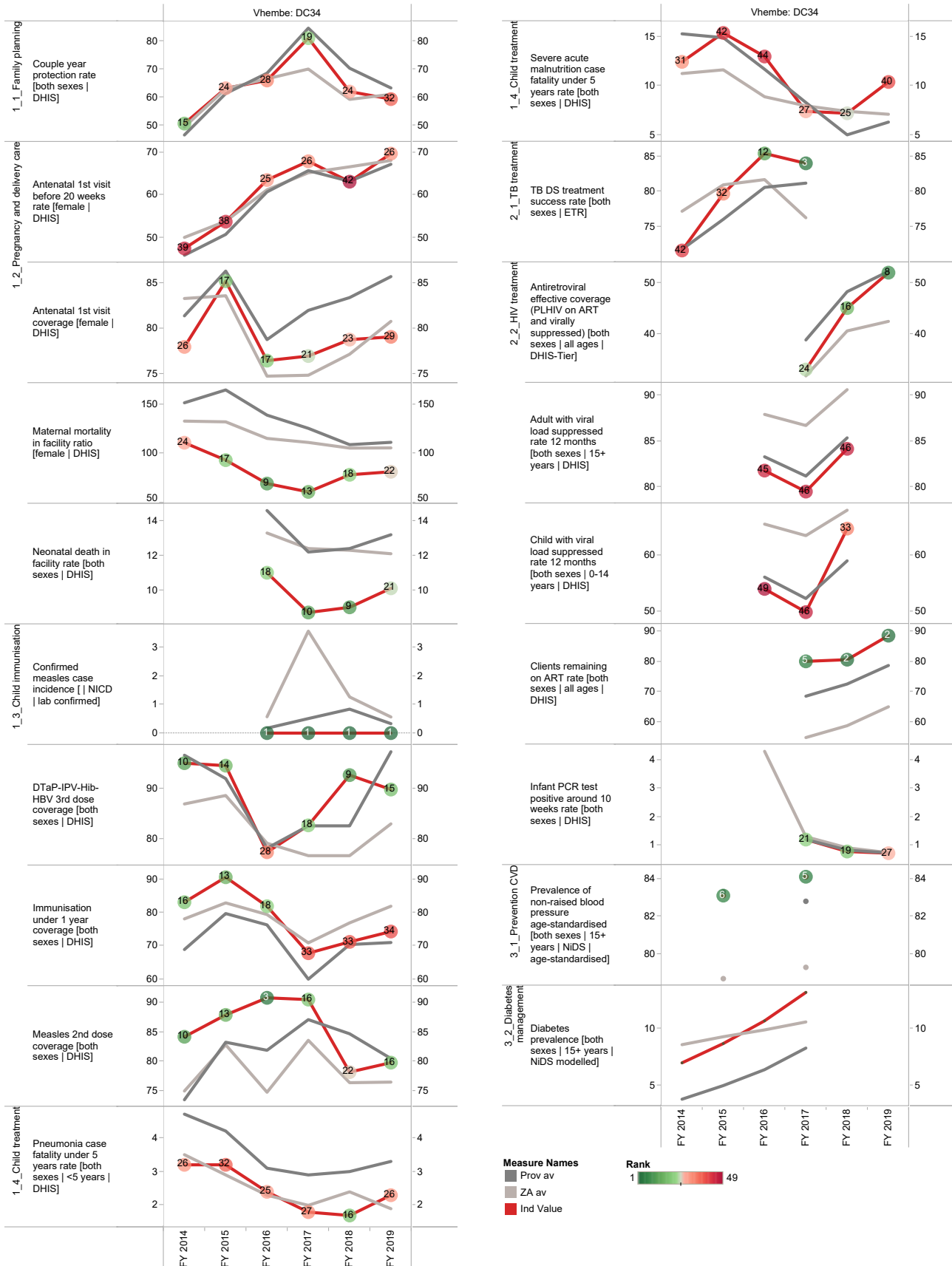
Broadcause
■ Injury
■ NCD
■ HIV and TB
■ Comm_mat_peri_nut

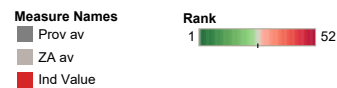
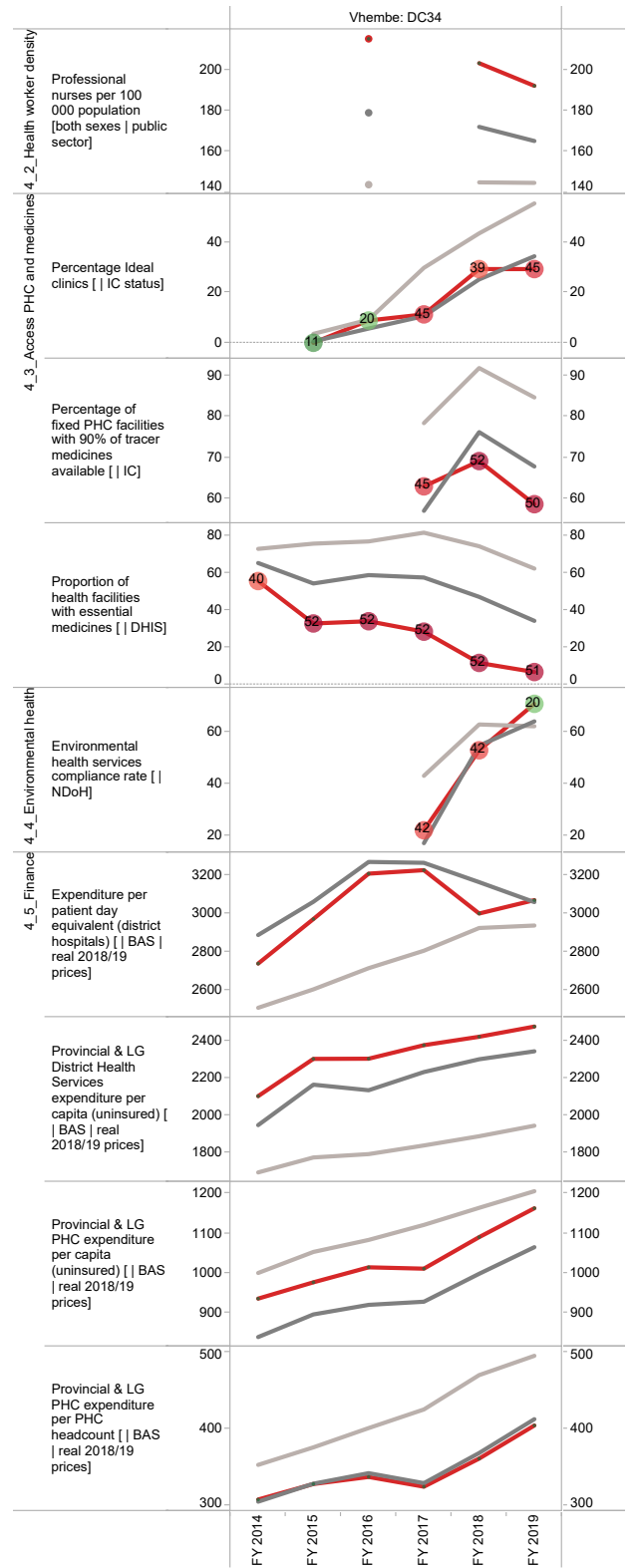
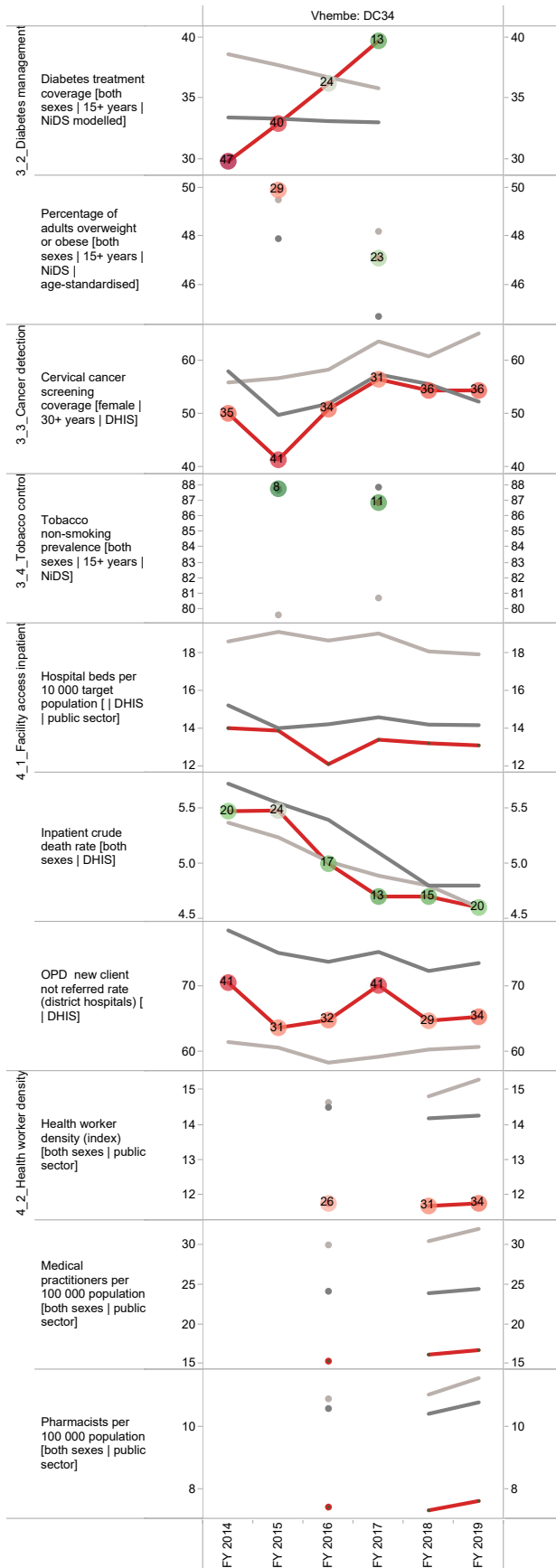
^c The Local Government Handbook South Africa 2017. A complete guide to municipalities in South Africa. Seventh edition. Accessible at: www.municipalities.co.za.

^d Mid-Year Population Estimates 2018, Stats SA.

Section B: Profile Limpopo Province

Annual trends, 2013/14 - 2018/19





Capricorn District Municipality (DC35)

The Capricorn District Municipality^e is a Category C municipality situated in the Limpopo Province. It forms a gateway to Botswana, Zimbabwe and Mozambique. It consists of the following four local municipalities: Blouberg, Lepelle-Nkumpi, Molemole and Polokwane.

Population (2018)^f: 1 338 763

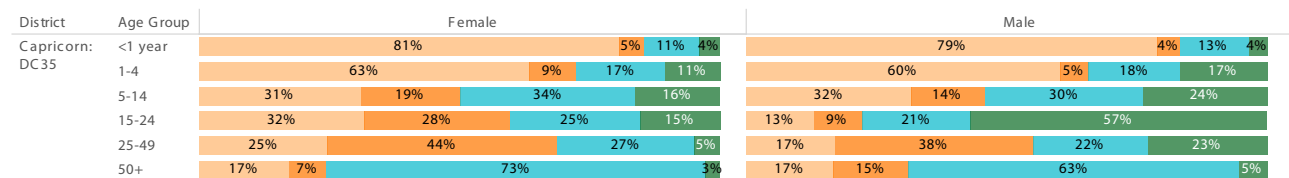
Population density (2018): 61.7 persons per km²

Estimated medical scheme coverage (2018): 8.3%

Burden of disease profile

For the percentage of deaths by broad cause, deaths are classified into four groups, namely: (i) injuries; (ii) non-communicable diseases; (iii) HIV and TB; and (iv) communicable diseases together with maternal, perinatal and nutritional conditions. Data are given by gender and age group for the period 2013 - 2015.

Percentage of deaths by broad cause, 2013 - 2015



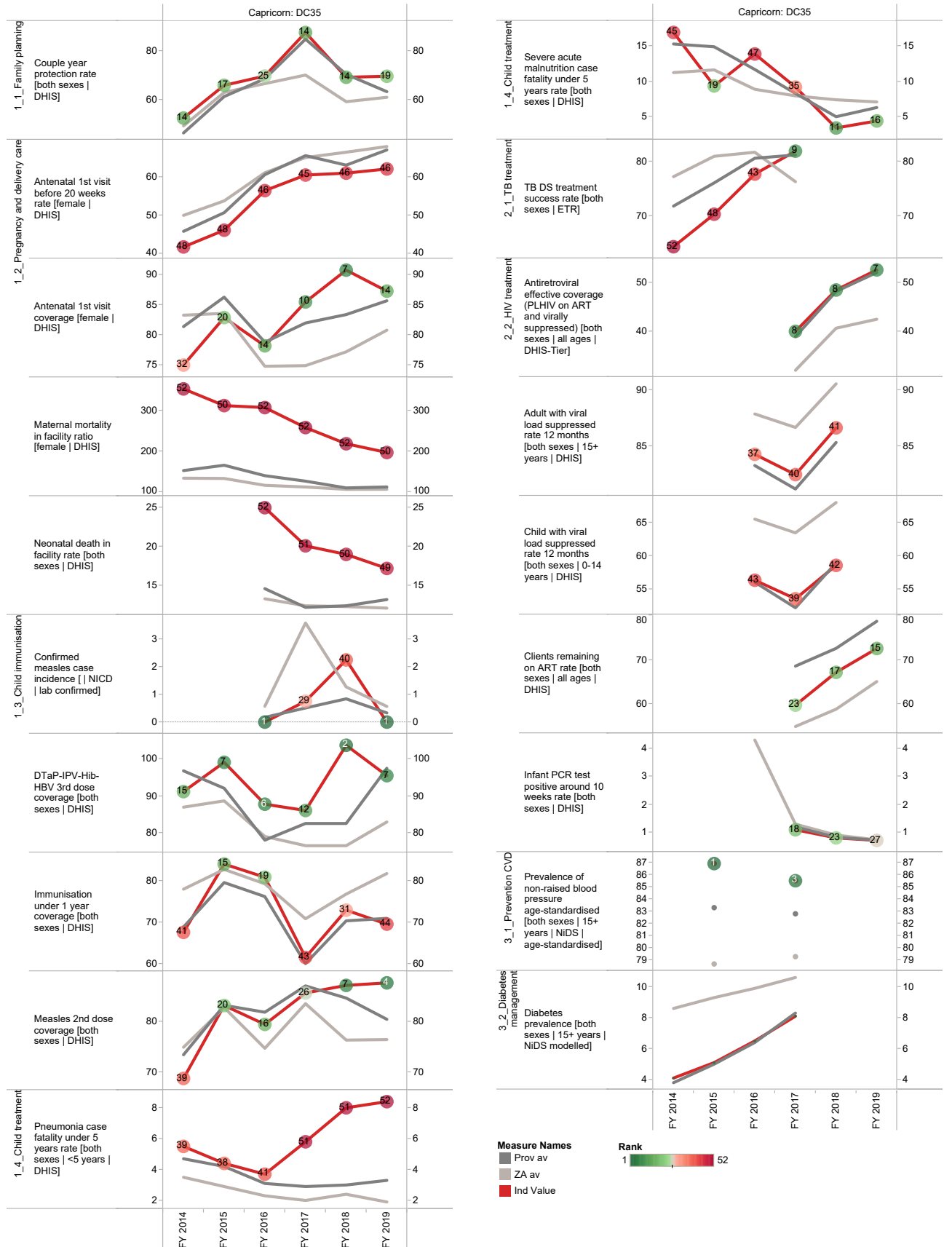
Source: Stats SA.



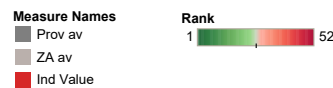
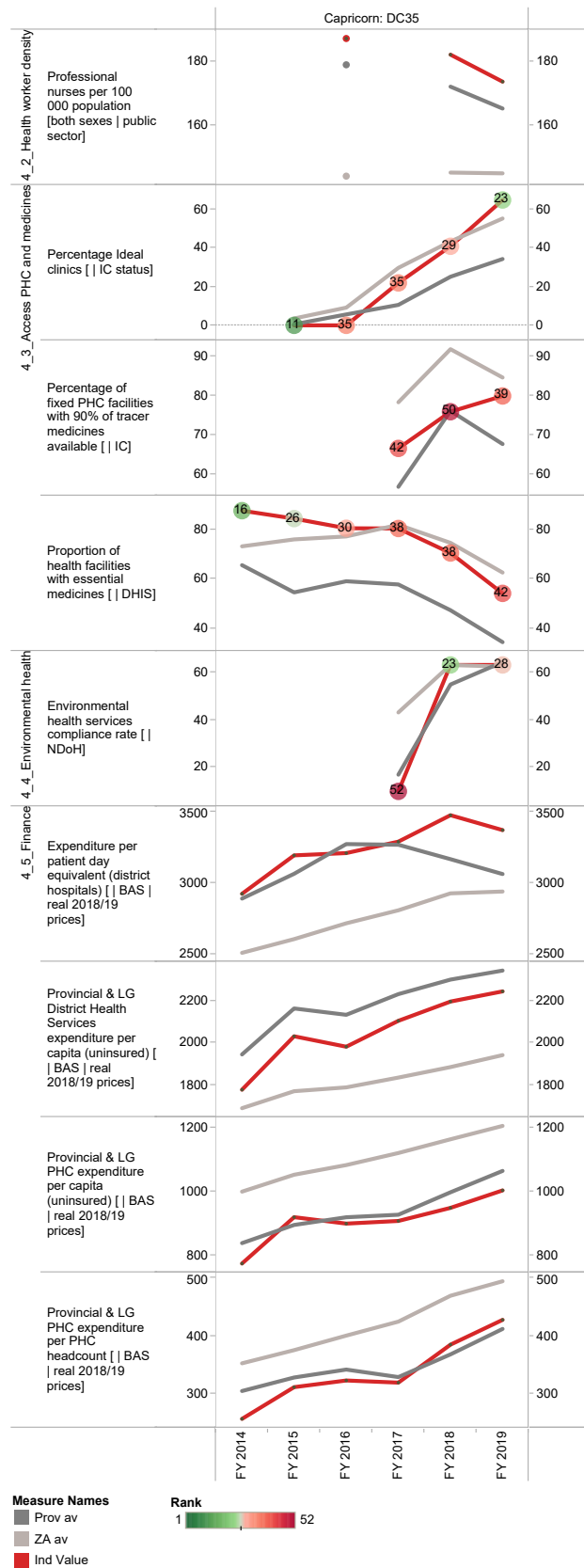
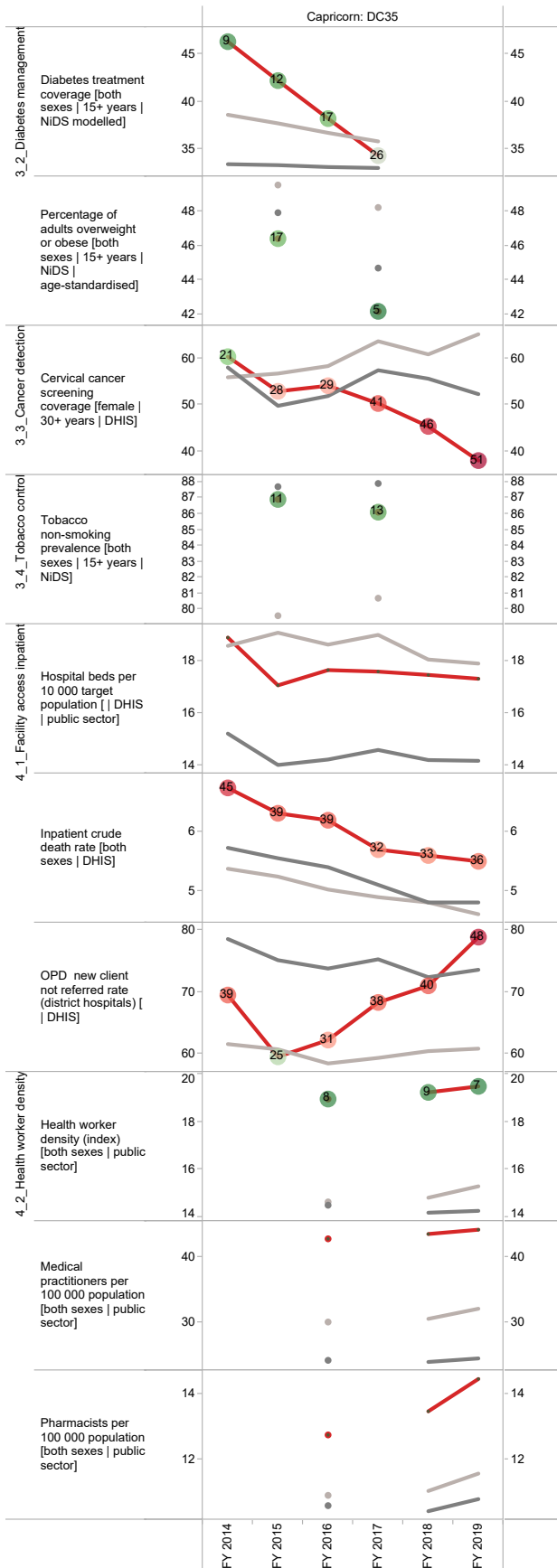
^e The Local Government Handbook South Africa 2017. A complete guide to municipalities in South Africa. Seventh edition. Accessible at: www.municipalities.co.za.

^f Mid-Year Population Estimates 2018, Stats SA.

Annual trends, 2013/14 - 2018/19



Section B: Profile Limpopo Province



Waterberg District Municipality (DC36)

The Waterberg District Municipality^g is a Category C municipality located in the western part of the Limpopo Province. It shares its five-border control points with Botswana. It is comprised of five local municipalities: Bela-Bela, Lephalale, Modimolle-Mookgophong, Mogalakwena and Thabazimbi.

Population (2018)^h: 715 272

Population density (2018): 15.9 persons per km²

Estimated medical scheme coverage (2018): 9.1%

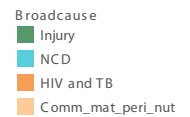
Burden of disease profile

For the percentage of deaths by broad cause, deaths are classified into four groups, namely: (i) injuries; (ii) non-communicable diseases; (iii) HIV and TB; and (iv) communicable diseases together with maternal, perinatal and nutritional conditions. Data are given by gender and age group for the period 2013 - 2015.

Percentage of deaths by broad cause, 2013 - 2015

District	Age Group	Female				Male			
Waterberg: DC36	<1 year	80%	7%	9%	4%	82%	5%	6%	7%
	1-4	58%	9%	18%	15%	65%	10%	9%	16%
	5-14	40%	21%	18%	21%	33%	17%	15%	35%
	15-24	25%	39%	18%	18%	13%	20%	18%	49%
	25-49	20%	50%	23%	8%	15%	43%	20%	22%
	50+	15%	9%	73%	3%	15%	15%	65%	6%

Source: Stats SA.

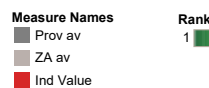
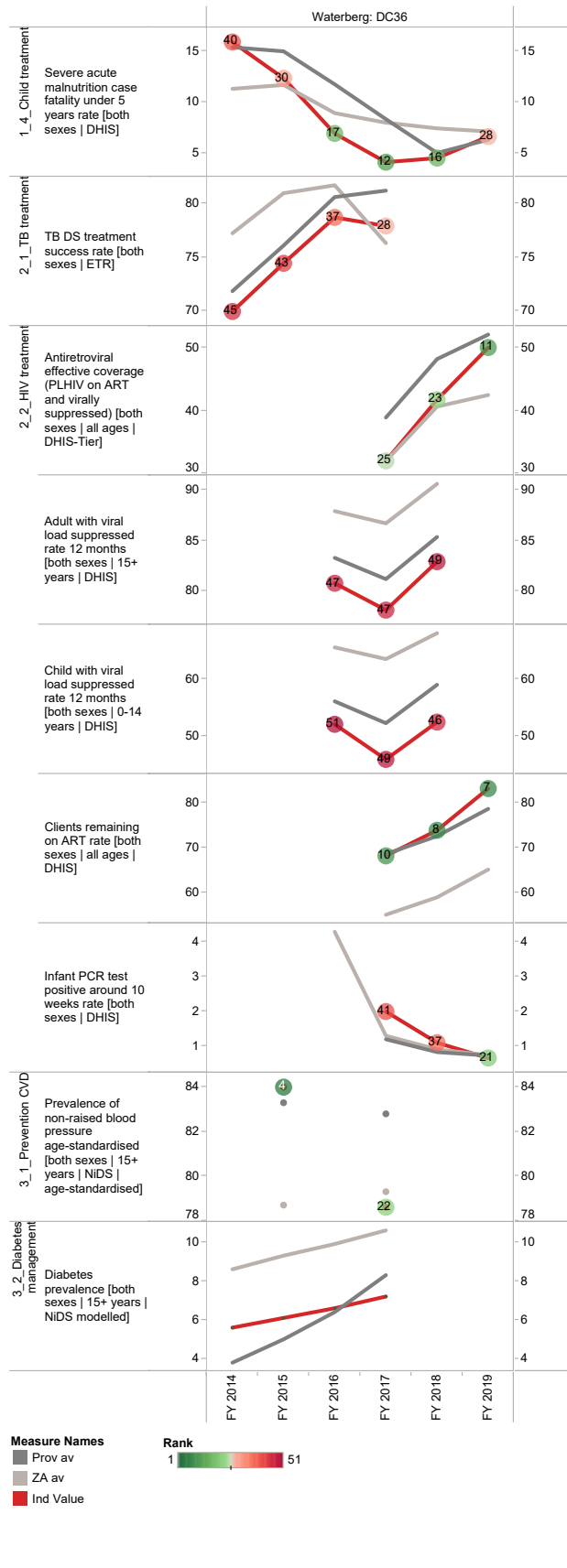
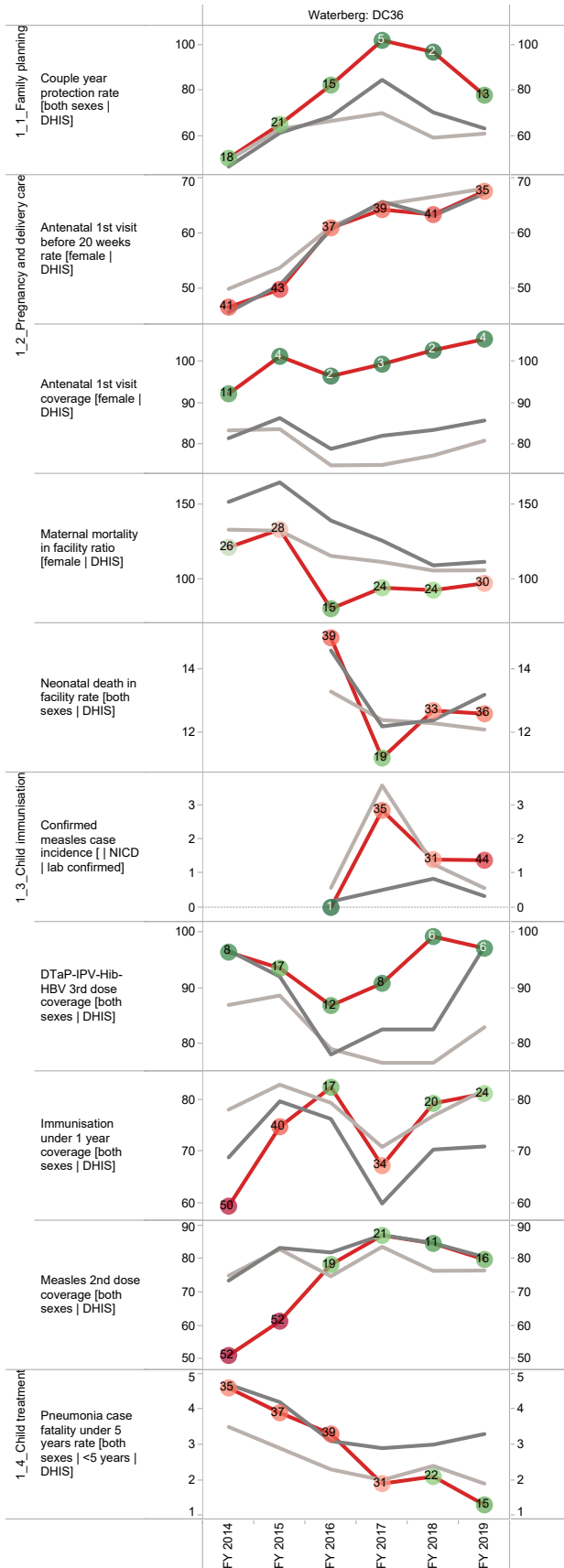


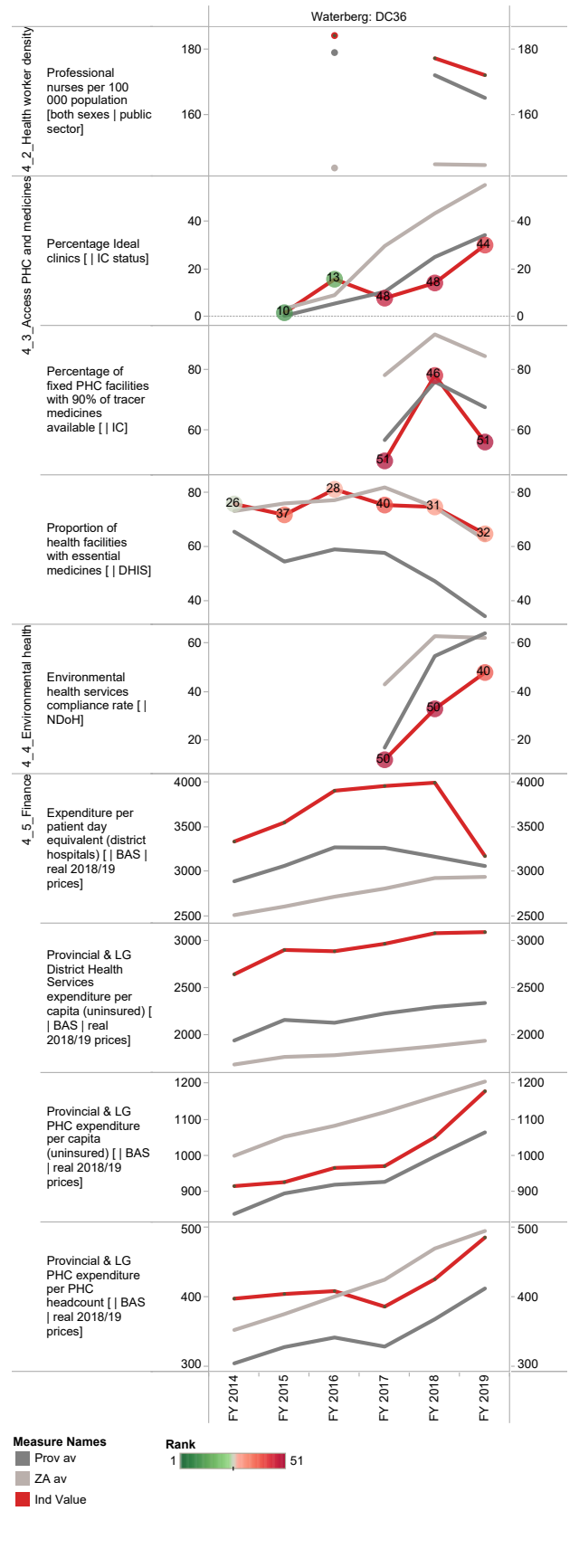
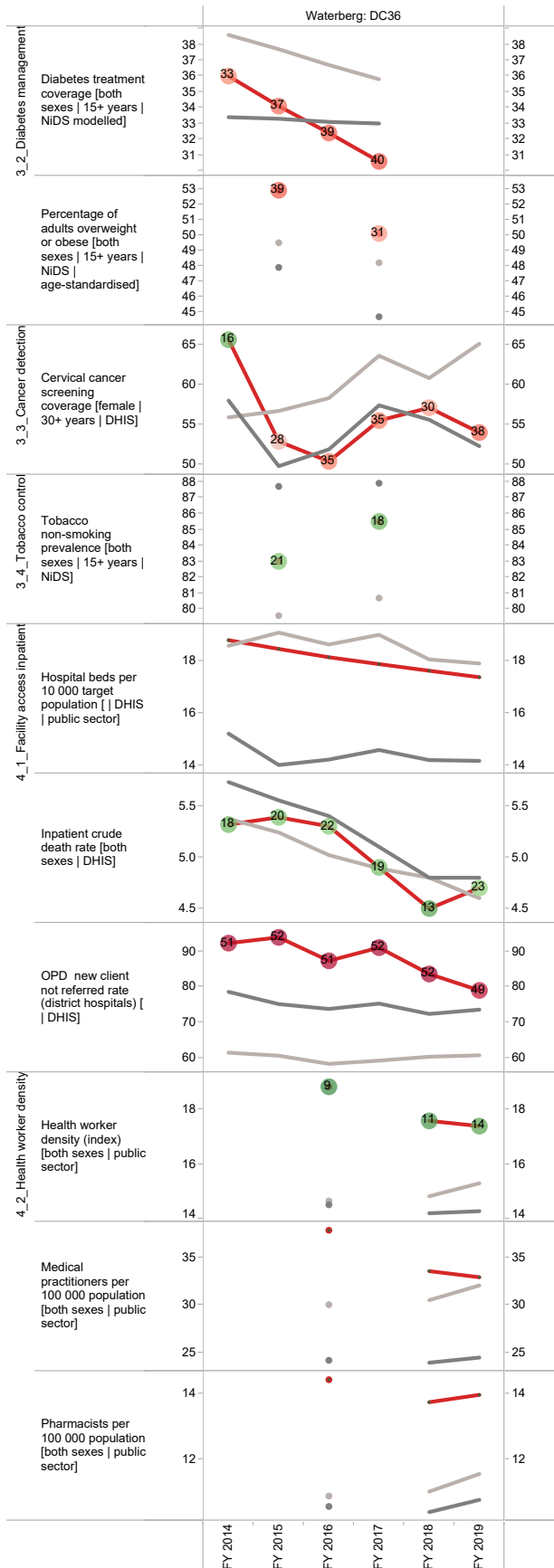
g The Local Government Handbook South Africa 2017. A complete guide to municipalities in South Africa. Seventh edition. Accessible at: www.municipalities.co.za.

h Mid-Year Population Estimates 2018, Stats SA.

Section B: Profile Limpopo Province

Annual trends, 2013/14 - 2018/19





Sekhukhune District Municipality (DC47)

The Sekhukhune District Municipalityⁱ is a Category C municipality and is located in the Limpopo Province, the northernmost part of South Africa. It is comprised of four local municipalities: Elias Motsoaledi, Ephraim Mogale, Makhuduthamaga and Fetakgomo - Greater Tubatse.

Population (2018)^j: 1 233 967

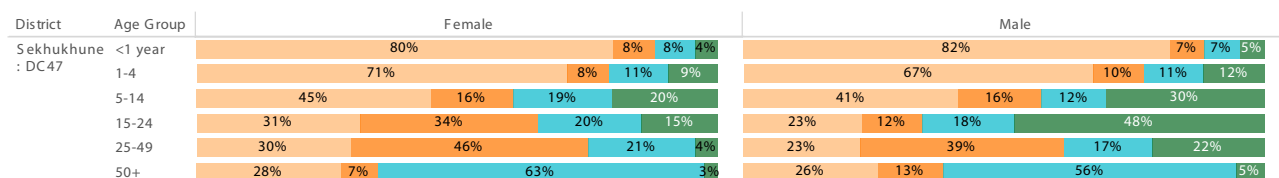
Population density (2018): 91.2 persons per km²

Estimated medical scheme coverage (2018): 5.6%

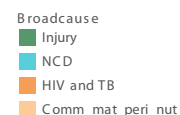
Burden of disease profile

For the percentage of deaths by broad cause, deaths are classified into four groups, namely: (i) injuries; (ii) non-communicable diseases; (iii) HIV and TB; and (iv) communicable diseases together with maternal, perinatal and nutritional conditions. Data are given by gender and age group for the period 2013 - 2015.

Percentage of deaths by broad cause, 2013 - 2015



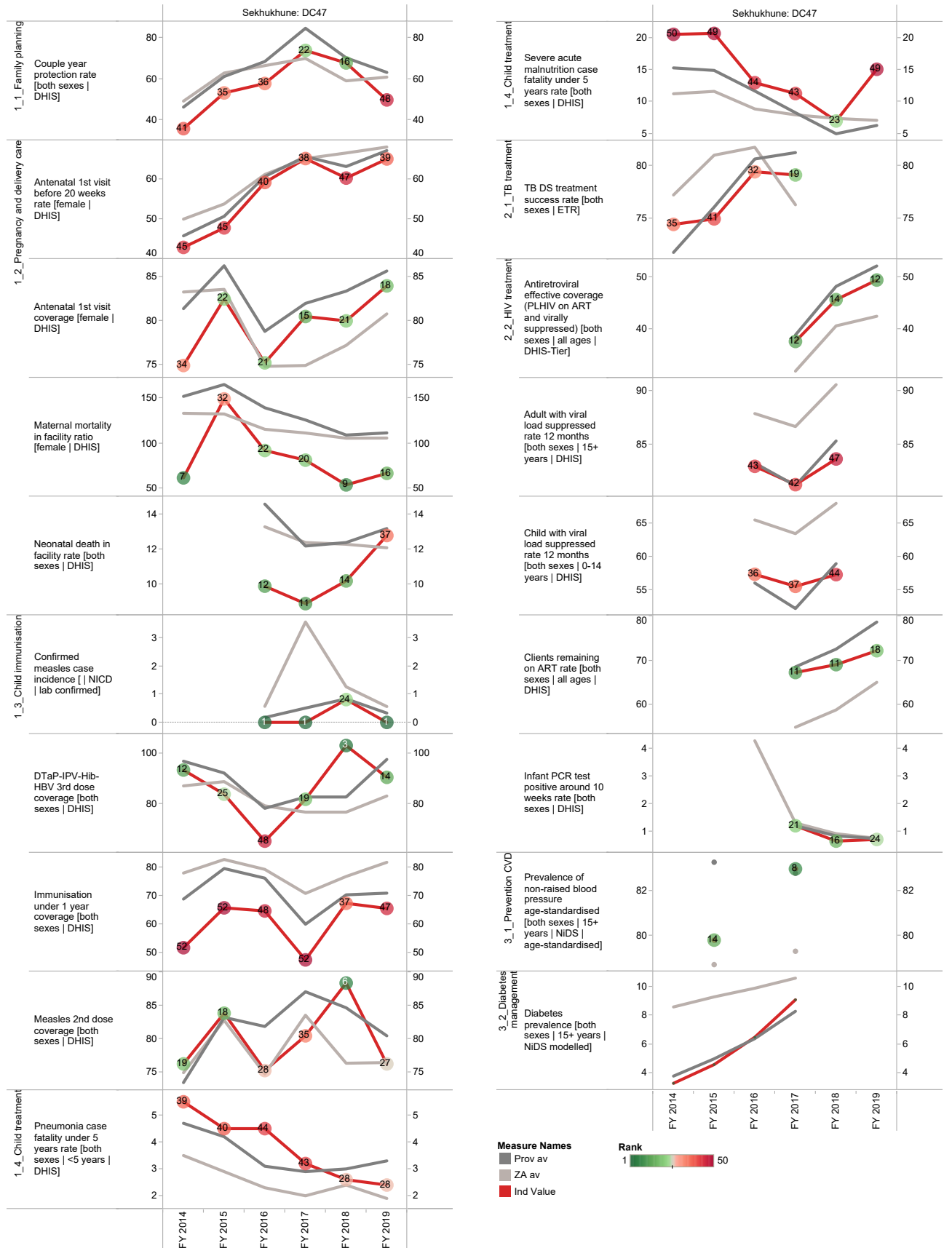
Source: Stats SA.



i The Local Government Handbook South Africa 2017. A complete guide to municipalities in South Africa. Seventh edition. Accessible at: www.municipalities.co.za.

j Mid-Year Population Estimates 2018, Stats SA.

Annual trends, 2013/14 - 2018/19



Section B: Profile Limpopo Province

