

## 13. Mpumalanga Province

### Gert Sibande District Municipality (DC30)

The Gert Sibande District Municipality<sup>a</sup> is a Category C municipality located in the Mpumalanga Province. It is comprised of seven local municipalities: Govan Mbeki, Chief Albert Luthuli, Msukaligwa, Dipaleseng, Mkhondo, Lekwa and Dr Pixley Ka Seme.

**Population (2018)<sup>b</sup>:** 1 196 425

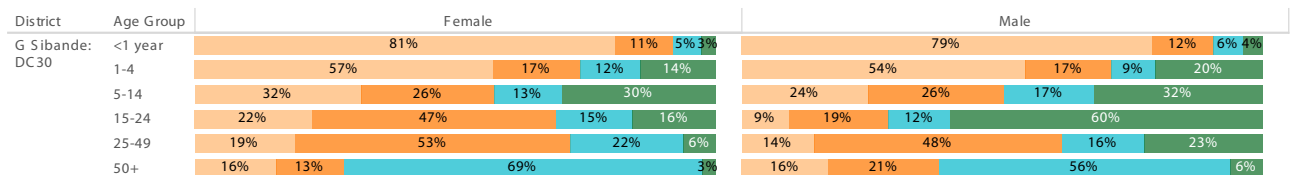
**Population density (2018):** 37.6 persons per km<sup>2</sup>

**Estimated medical scheme coverage (2018):** 13.1%

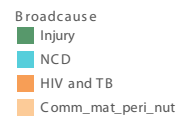
#### Burden of disease profile

For the percentage of deaths by broad cause, deaths are classified into four groups, namely: (i) injuries; (ii) non-communicable diseases; (iii) HIV and TB; and (iv) communicable diseases together with maternal, perinatal and nutritional conditions. Data are given by gender and age group for the period 2013 - 2015.

#### Percentage of deaths by broad cause, 2013 - 2015



Source: Stats SA.

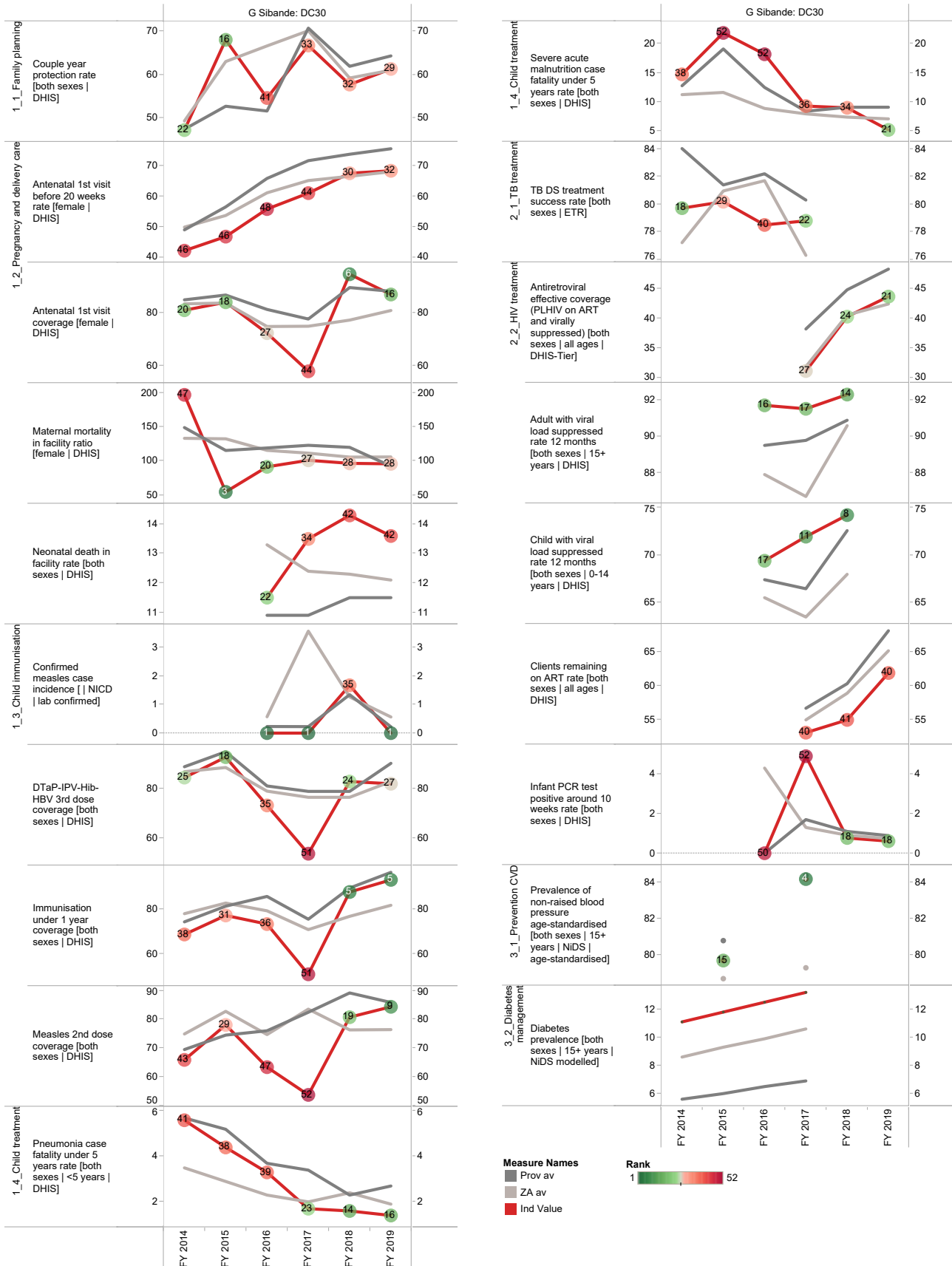


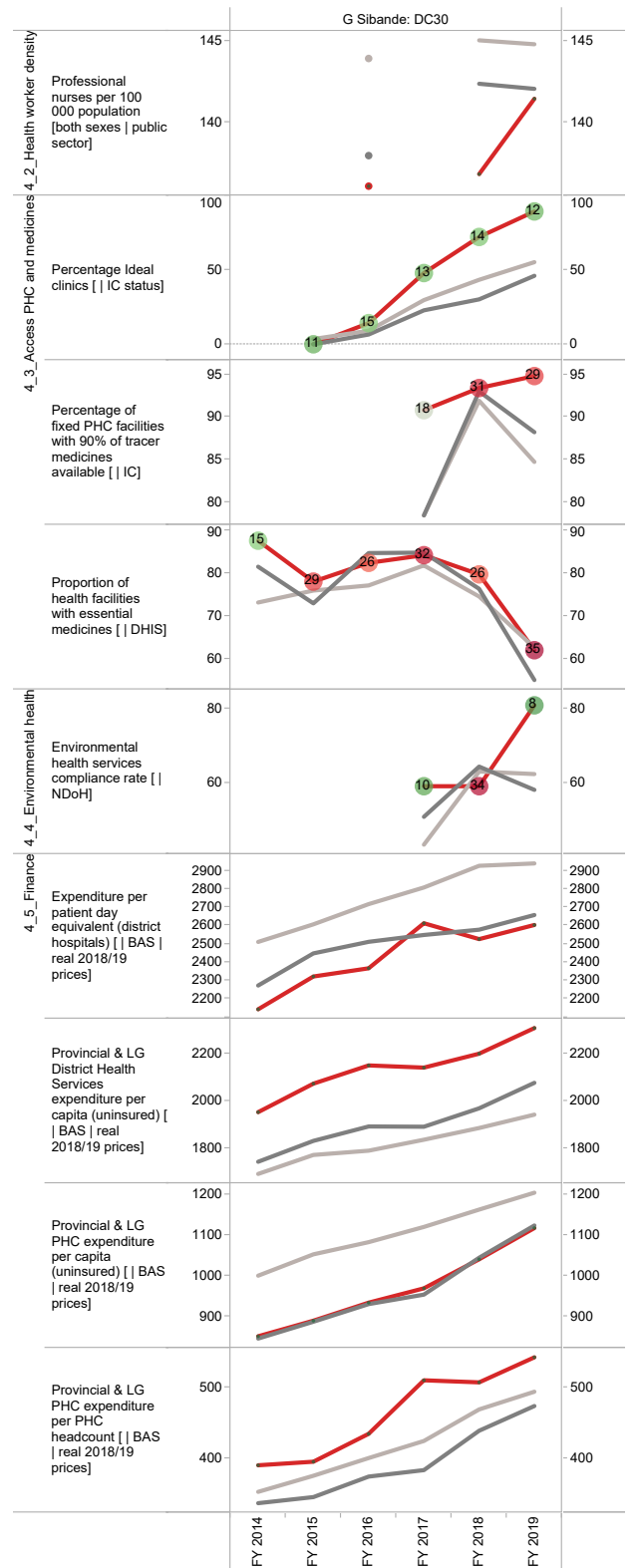
a The Local Government Handbook South Africa 2017. A complete guide to municipalities in South Africa. Seventh edition. Accessible at: [www.municipalities.co.za](http://www.municipalities.co.za).

b Mid-Year Population Estimates 2018, Stats SA.

## Section B: Profile Mpumalanga Province

### Annual trends, 2013/14 - 2018/19





Measure Names  
 ■ Prov av  
 ■ ZA av  
 ■ Ind Value



## Nkangala District Municipality (DC31)

The Nkangala District Municipality<sup>c</sup> is a Category C municipality in the Mpumalanga Province. It is comprised of six local municipalities: Victor Khanye, Emalahleni, Steve Tshwete, Emakhazeni, Thembisile Hani, and Dr JS Moroka.

Population (2018)<sup>d</sup>: 1 531 445

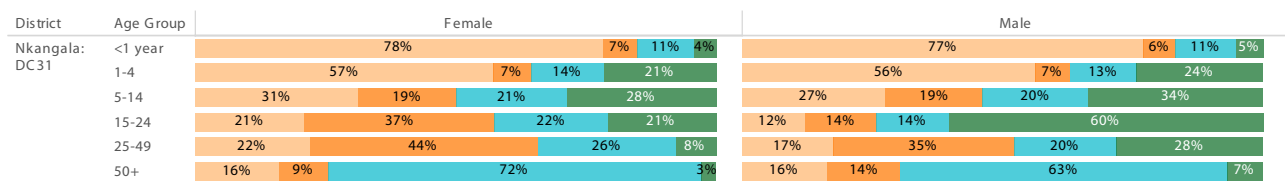
Population density (2018): 91.4 persons per km<sup>2</sup>

Estimated medical scheme coverage (2018): 14.8%

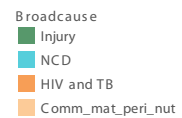
### Burden of disease profile

For the percentage of deaths by broad cause, deaths are classified into four groups, namely: (i) injuries; (ii) non-communicable diseases; (iii) HIV and TB; and (iv) communicable diseases together with maternal, perinatal and nutritional conditions. Data are given by gender and age group for the period 2013 - 2015.

### Percentage of deaths by broad cause, 2013 - 2015



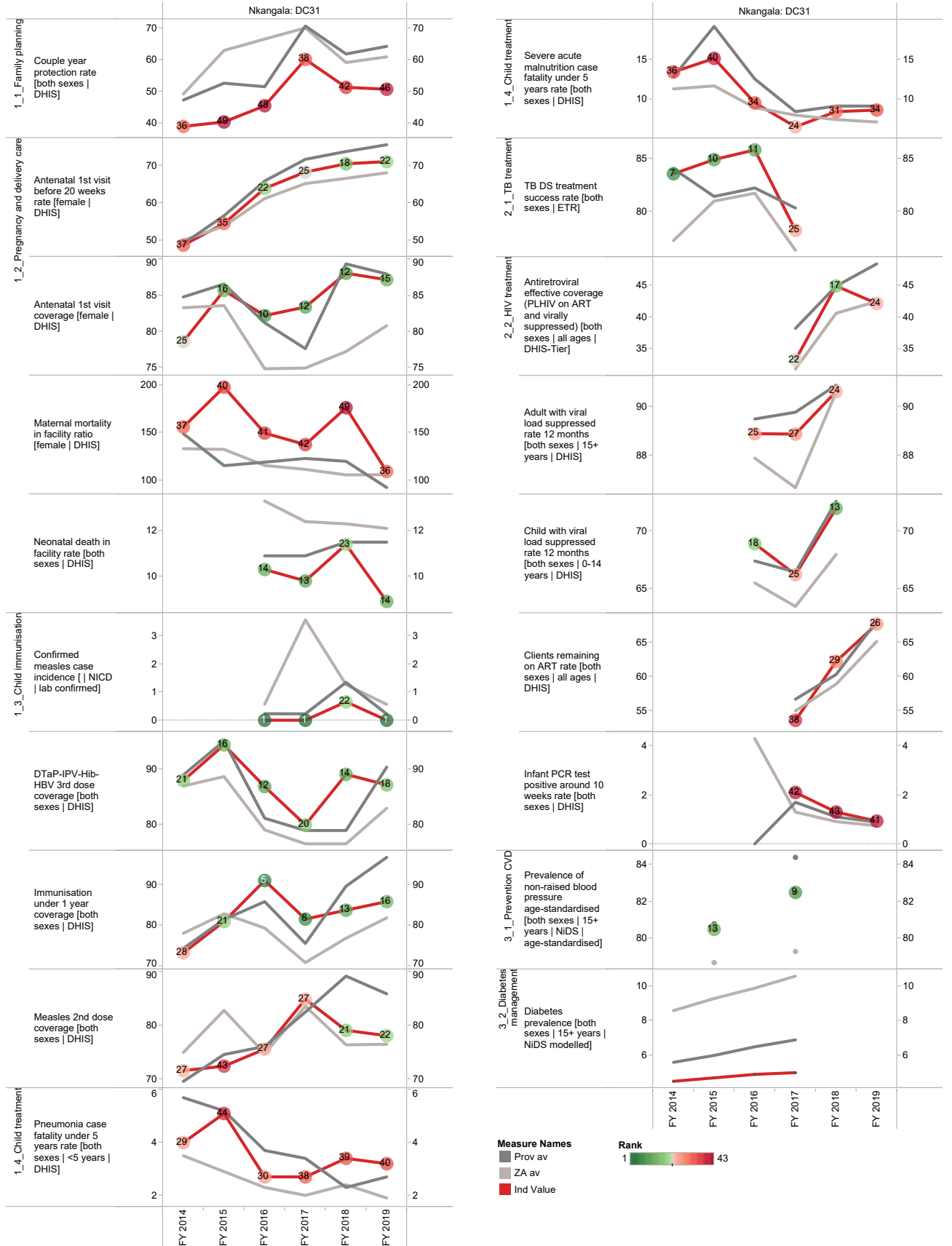
Source: Stats SA.



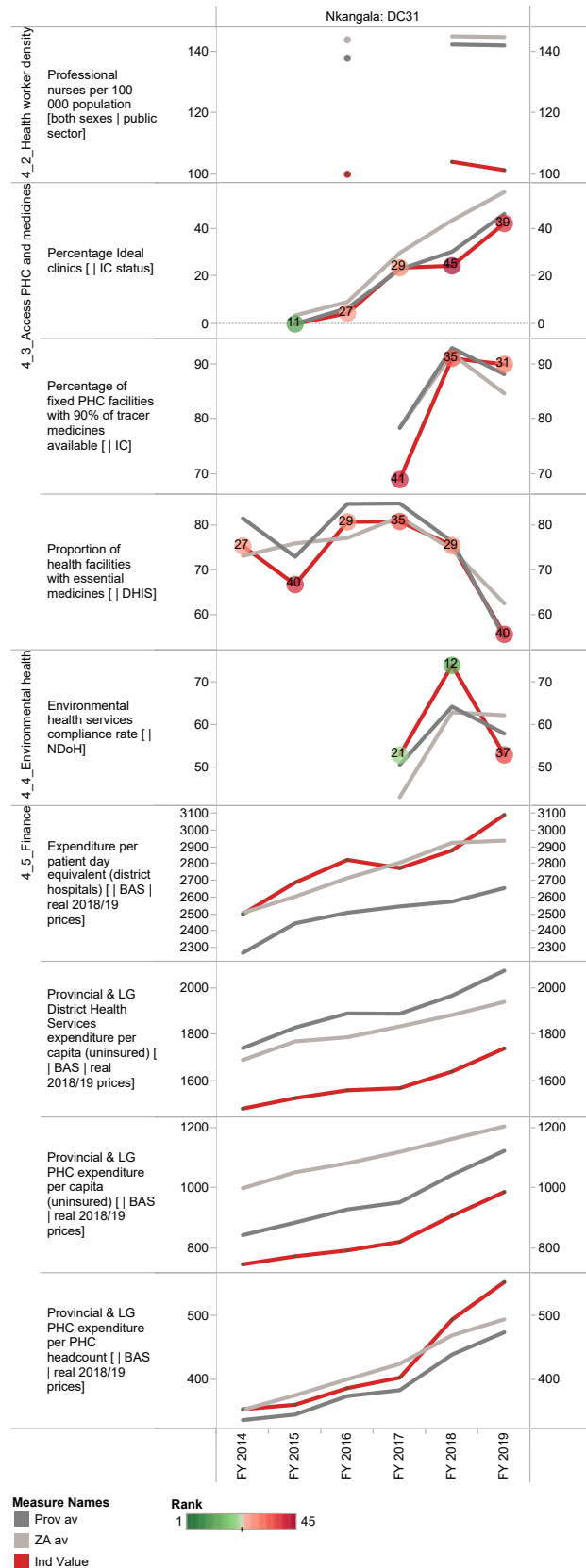
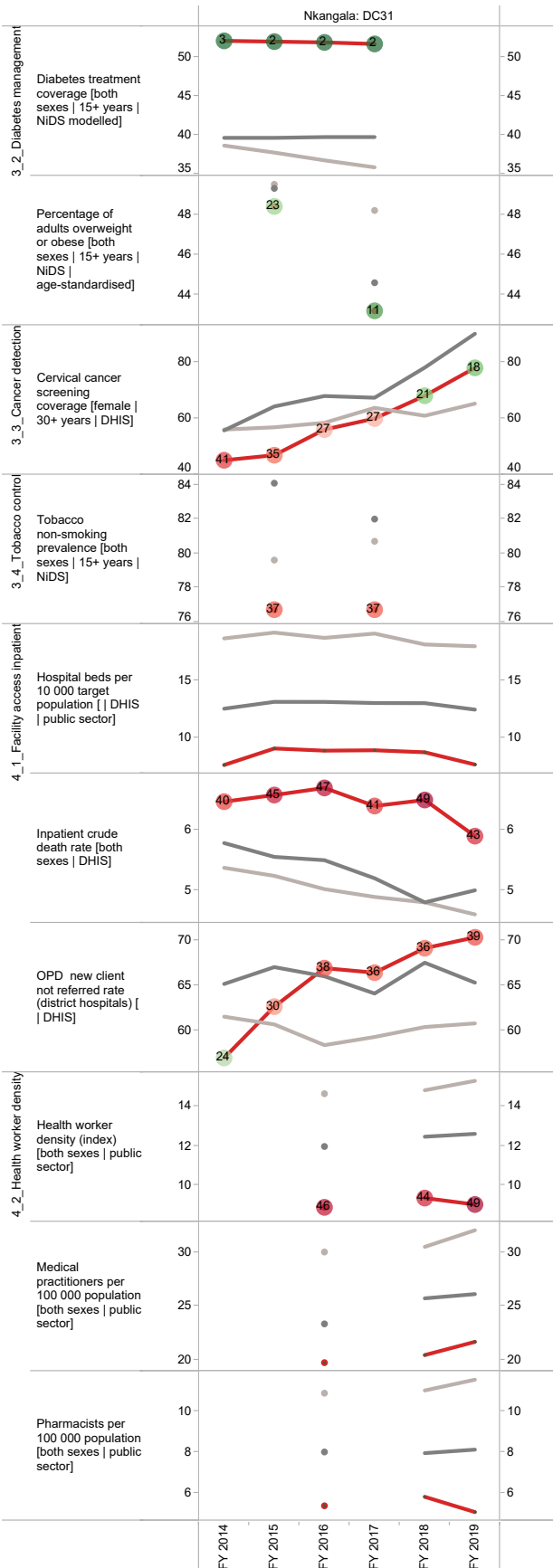
<sup>c</sup> The Local Government Handbook South Africa 2017. A complete guide to municipalities in South Africa. Seventh edition. Accessible at: [www.municipalities.co.za](http://www.municipalities.co.za).

<sup>d</sup> Mid-Year Population Estimates 2018, Stats SA.

Annual trends, 2013/14 - 2018/19



## Section B: Profile Mpumalanga Province



## Ehlanzeni District Municipality (DC32)

The Ehlanzeni District Municipality<sup>e</sup> is a Category C municipality situated in the north-east of the Mpumalanga Province. The district is comprised of four local municipalities: Bushbuckridge, City of Mbombela, Nkomazi and Thaba Chweu.

**Population (2018)<sup>f</sup>:** 1 734 492

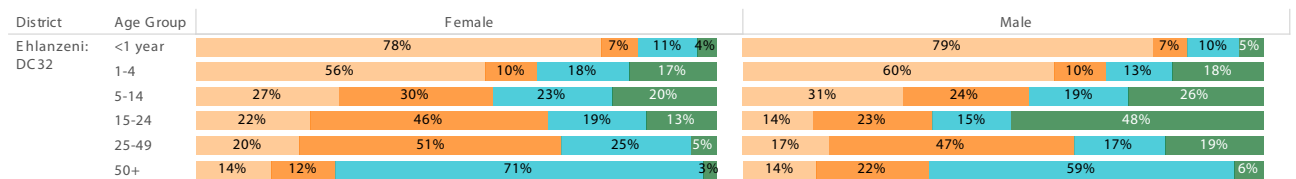
**Population density (2018):** 62.2 persons per km<sup>2</sup>

**Estimated medical scheme coverage (2018):** 10.2%

### Burden of disease profile

For the percentage of deaths by broad cause, deaths are classified into four groups, namely: (i) injuries; (ii) non-communicable diseases; (iii) HIV and TB; and (iv) communicable diseases together with maternal, perinatal and nutritional conditions. Data are given by gender and age group for the period 2013 - 2015.

### Percentage of deaths by broad cause, 2013 - 2015



Source: Stats SA.

Broadcause  
■ Injury  
■ NCD  
■ HIV and TB  
■ Comm\_mat\_peri\_nut

<sup>e</sup> The Local Government Handbook South Africa 2017. A complete guide to municipalities in South Africa. Seventh edition. Accessible at: [www.municipalities.co.za](http://www.municipalities.co.za).

<sup>f</sup> Mid-Year Population Estimates 2018, Stats SA.

## Section B: Profile Mpumalanga Province

### Annual trends, 2013/14 - 2018/19

