

14. Northern Cape Province

John Taolo Gaetsewe District Municipality (DC45)

The John Taolo Gaetsewe District Municipality^a (previously Kgalagadi) is a Category C municipality located in the north of the Northern Cape Province, bordering Botswana in the west. It comprises the three local municipalities of Gamagara, Ga-Segonyana and Joe Morolong.

Population (2018)^b: 243 804

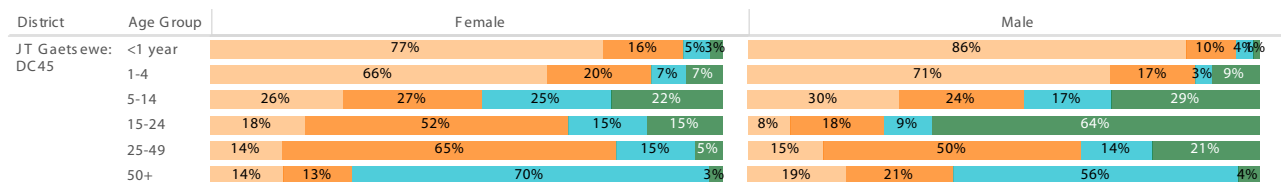
Population density (2018): 8.9 persons per km²

Estimated medical scheme coverage (2018): 13.9%

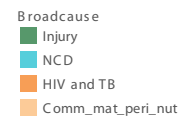
Burden of disease profile

For the percentage of deaths by broad cause, deaths are classified into four groups, namely: (i) injuries; (ii) non-communicable diseases; (iii) HIV and TB; and (iv) communicable diseases together with maternal, perinatal and nutritional conditions. Data are given by gender and age group for the period 2013 - 2015.

Percentage of deaths by broad cause, 2013 - 2015



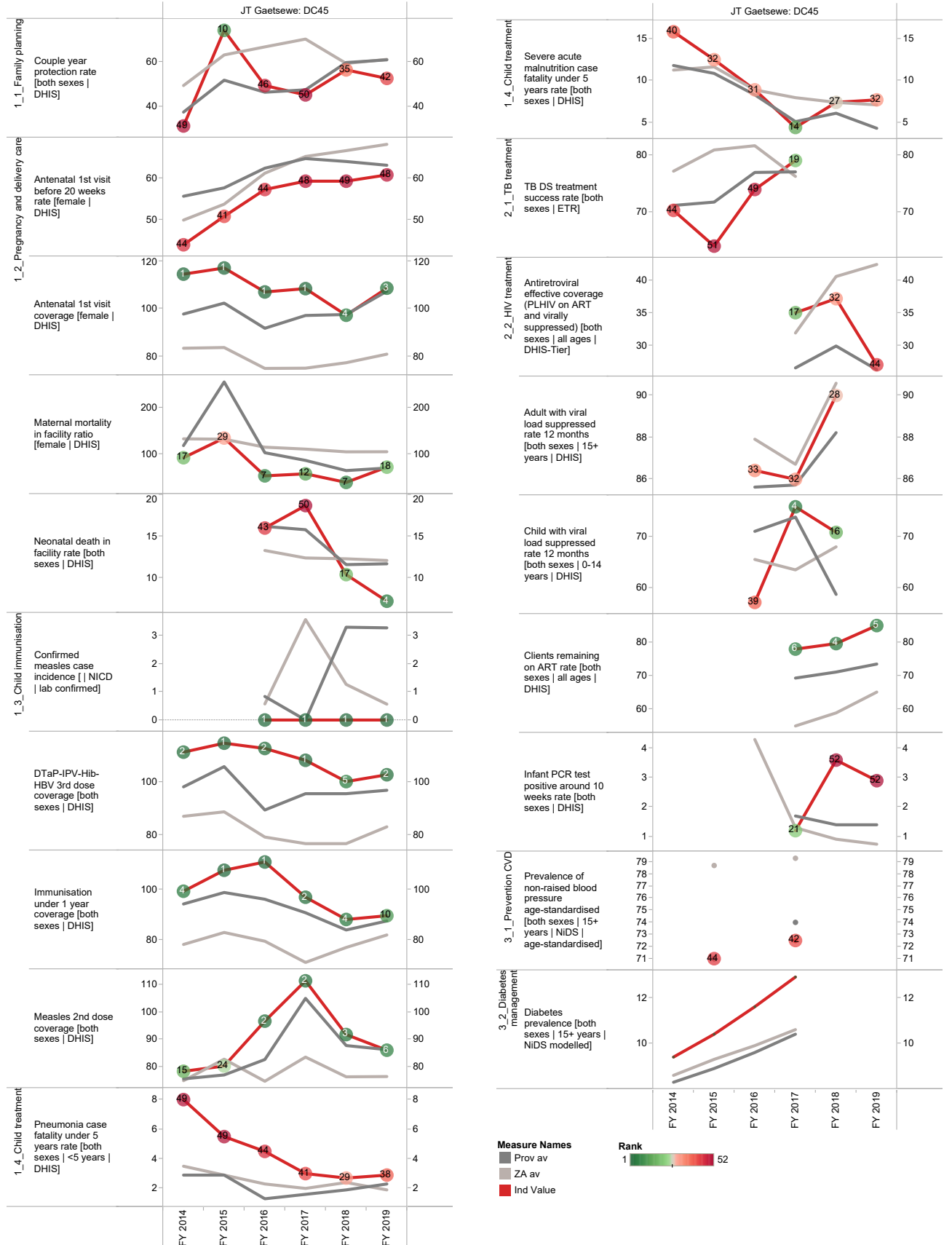
Source: Stats SA.



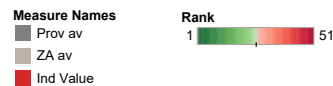
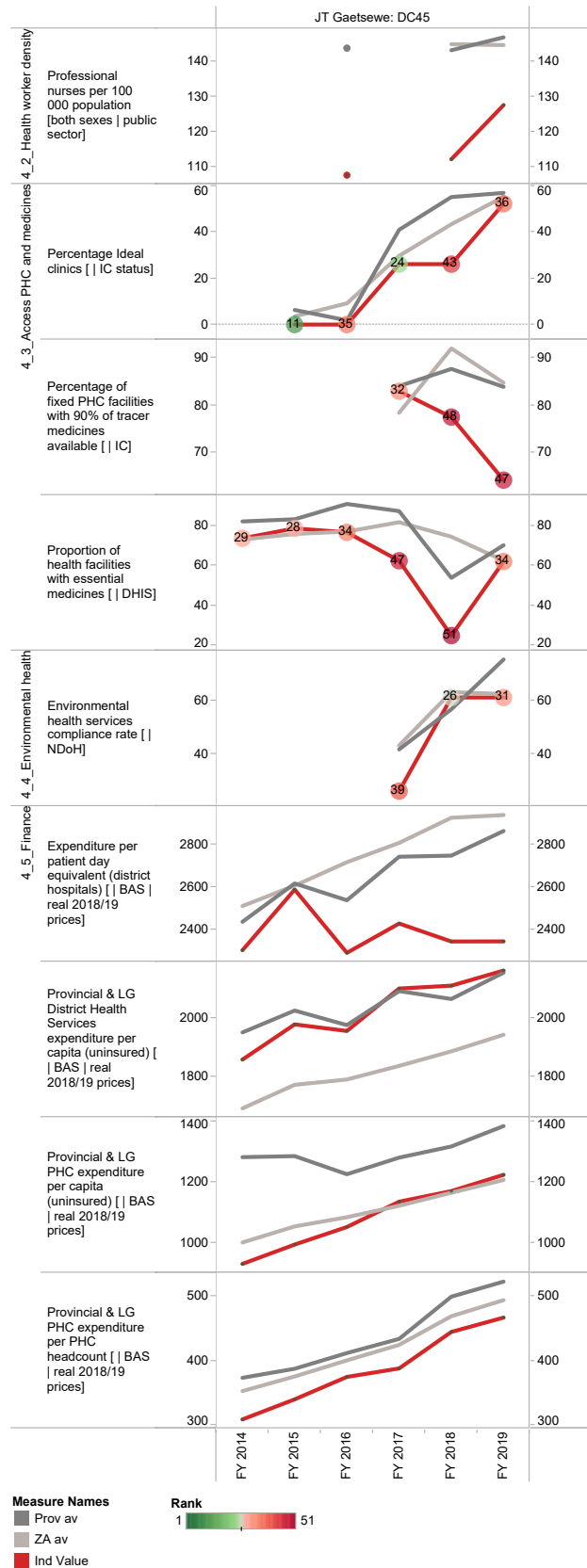
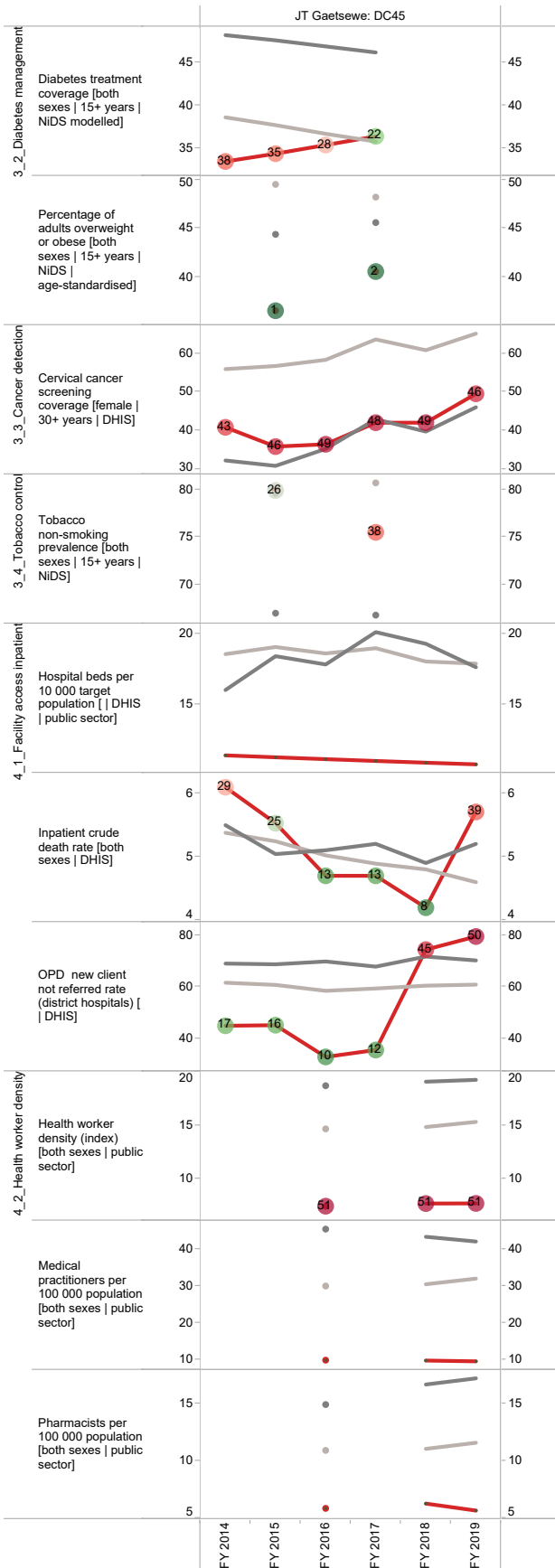
a The Local Government Handbook South Africa 2017. A complete guide to municipalities in South Africa. Seventh edition. Accessible at: www.municipalities.co.za.

b Mid-Year Population Estimates 2018, Stats SA.

Annual trends, 2013/14 - 2018/19



Section B: Profile Northern Cape Province



Namakwa District Municipality (DC6)

The Namakwa District Municipality^c is a Category C municipality located in the Northern Cape Province. It is bordered by the republic of Namibia in the north and is comprised of six local municipalities: Nama Khoi, Hantam, Khai-Ma, Kamiesberg, Karoo Hoogland and Richtersveld.

Population (2018)^d: 113 554

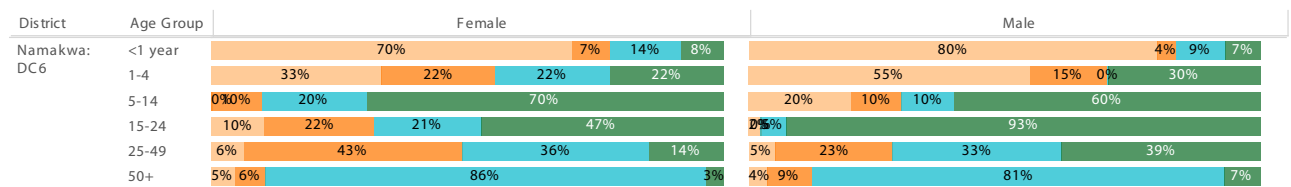
Population density (2018): 0.9 persons per km²

Estimated medical scheme coverage (2018): 17.5%

Burden of disease profile

For the percentage of deaths by broad cause, deaths are classified into four groups, namely: (i) injuries; (ii) non-communicable diseases; (iii) HIV and TB; and (iv) communicable diseases together with maternal, perinatal and nutritional conditions. Data are given by gender and age group for the period 2013 - 2015.

Percentage of deaths by broad cause, 2013 - 2015



Source: Stats SA.

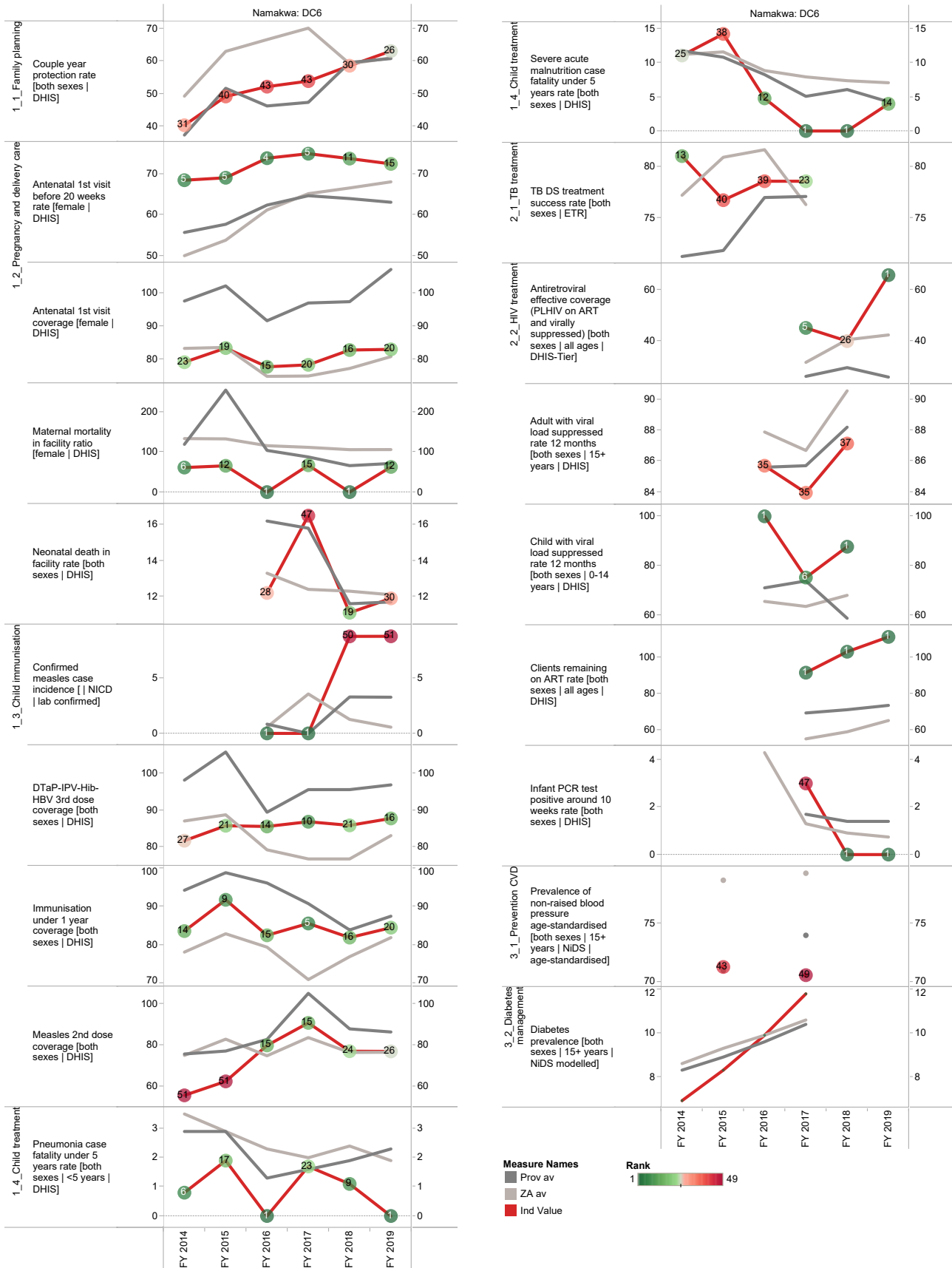
Broadcause
■ Injury
■ NCD
■ HIV and TB
■ Comm_mat_peri_nut

^c The Local Government Handbook South Africa 2017. A complete guide to municipalities in South Africa. Seventh edition. Accessible at: www.municipalities.co.za.

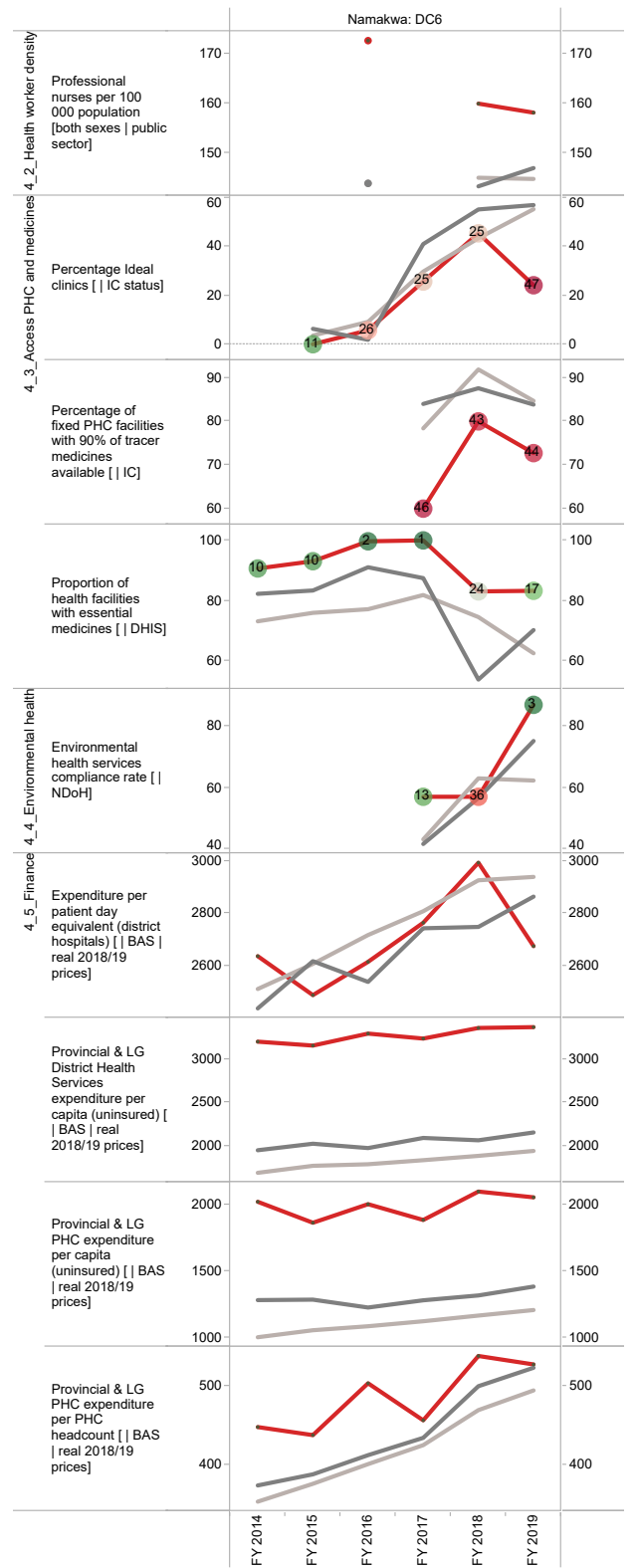
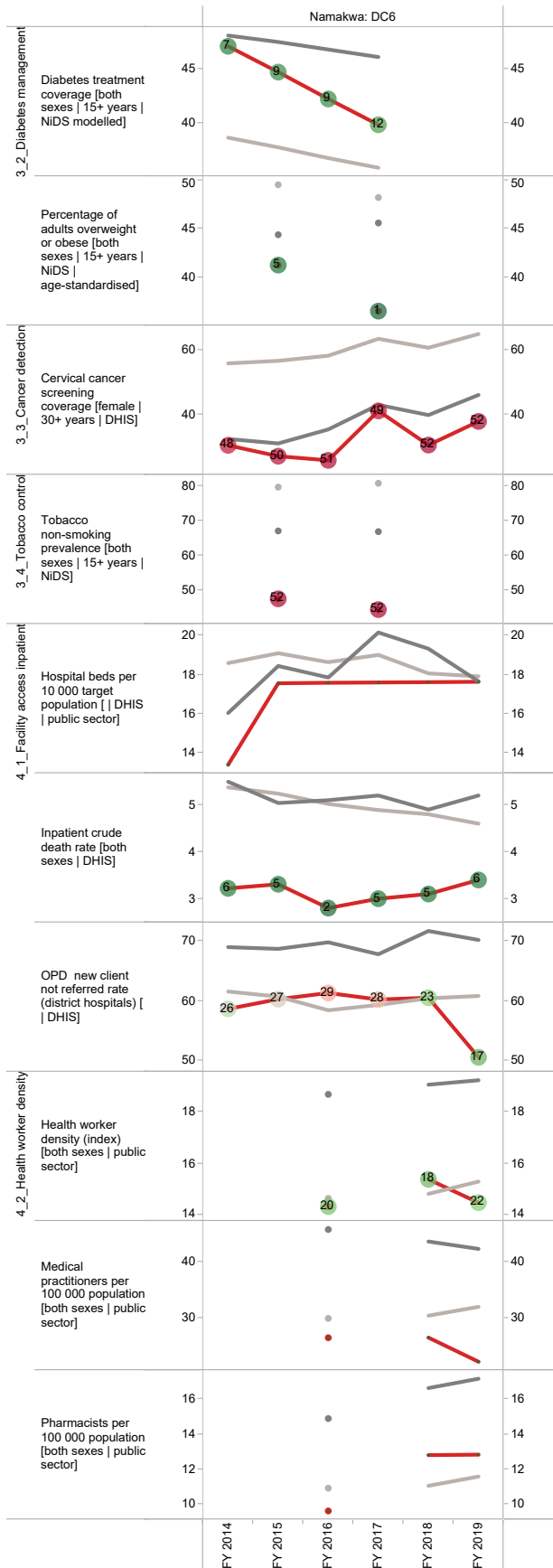
^d Mid-Year Population Estimates 2018, Stats SA.

Section B: Profile Northern Cape Province

Annual trends, 2013/14 - 2018/19



Section B: Profile Northern Cape Province



Pixley Ka Seme District Municipality (DC7)

The Pixley Ka Seme District Municipality^e is a Category C municipality situated in the south-east of the Northern Cape Province. The district is comprised of eight local municipalities: Ubuntu, Umsobomvu, Emthanjeni, Kareeberg, Renosterberg, Thembelihle, Siyathemba and Siyancuma.

Population (2018)^f: 209 791

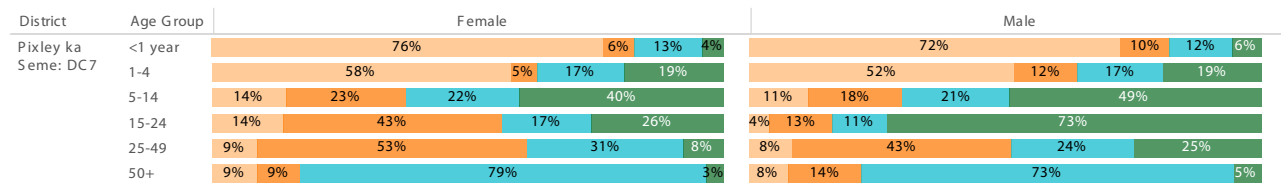
Population density (2018): 2.0 persons per km²

Estimated medical scheme coverage (2018): 13.1%

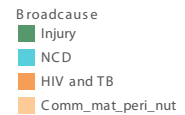
Burden of disease profile

For the percentage of deaths by broad cause, deaths are classified into four groups, namely: (i) injuries; (ii) non-communicable diseases; (iii) HIV and TB; and (iv) communicable diseases together with maternal, perinatal and nutritional conditions. Data are given by gender and age group for the period 2013 - 2015.

Percentage of deaths by broad cause, 2013 - 2015



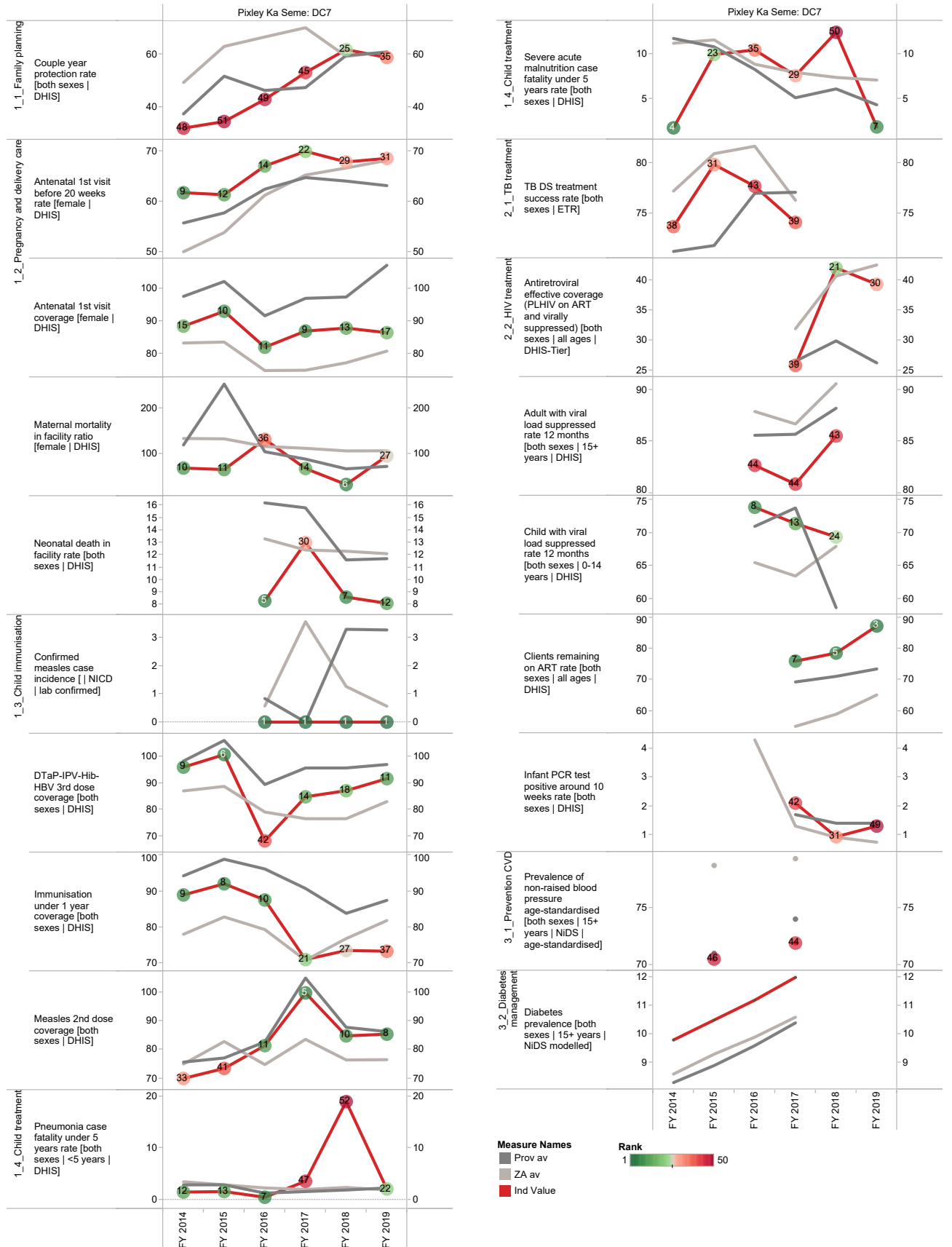
Source: Stats SA.



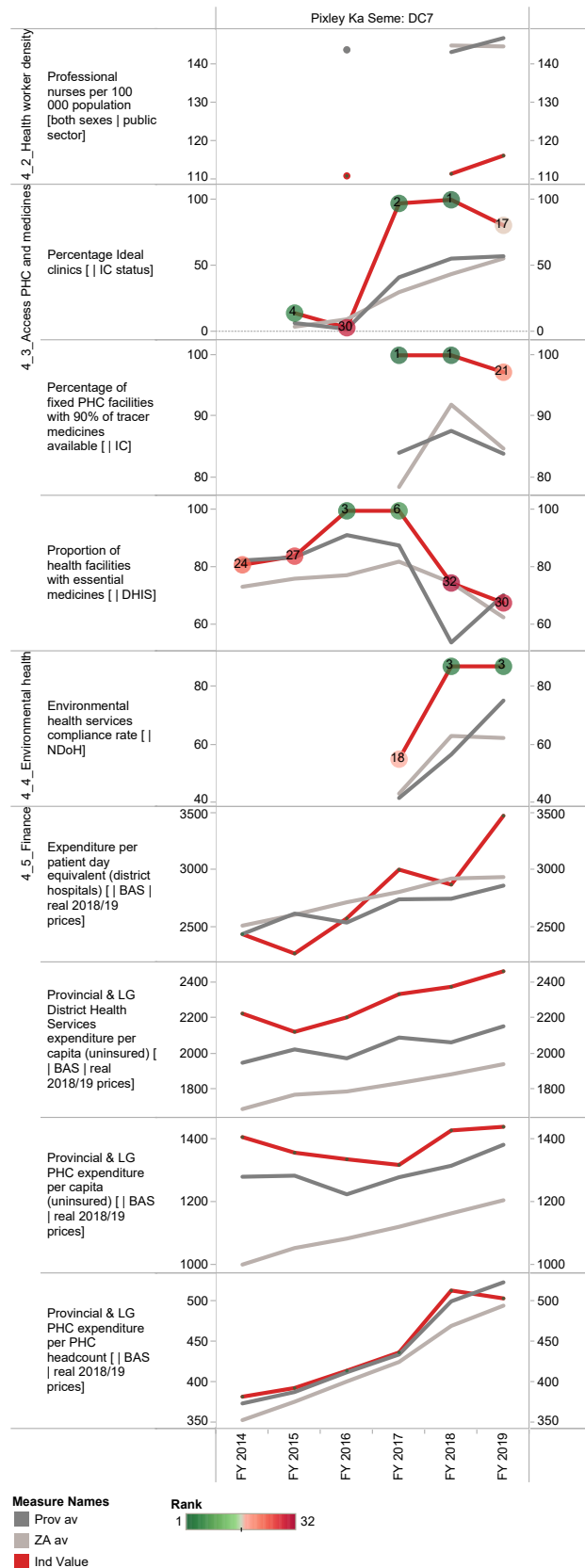
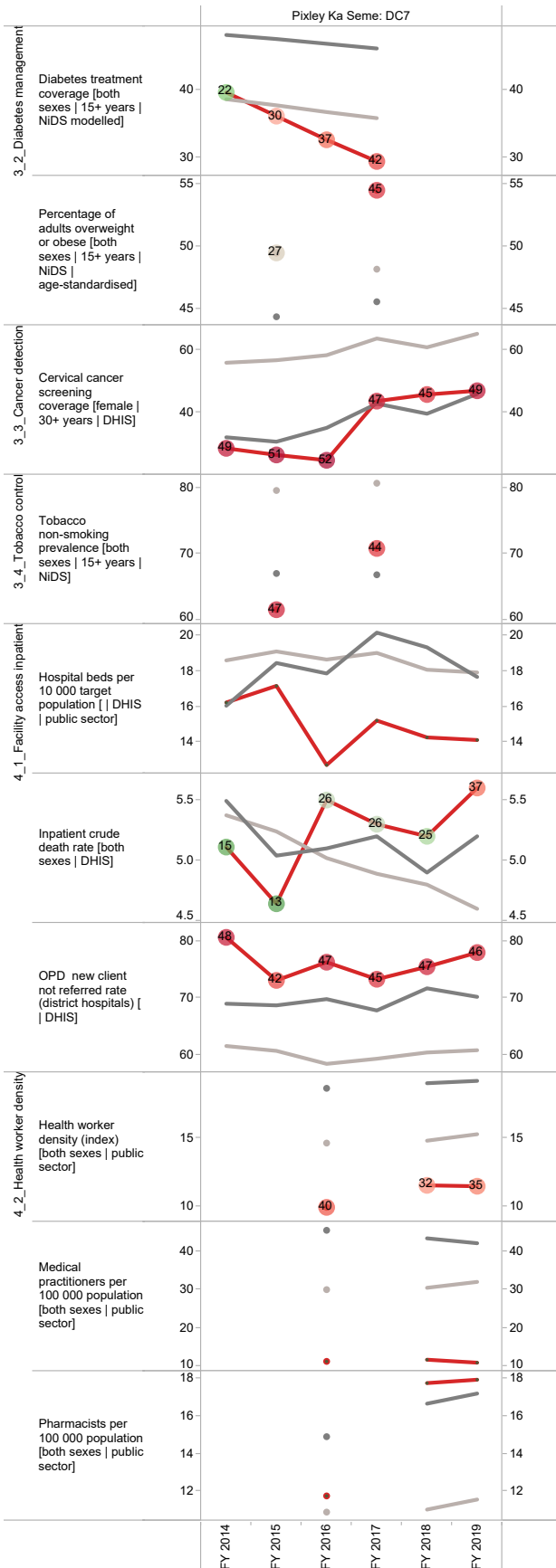
^e The Local Government Handbook South Africa 2017. A complete guide to municipalities in South Africa. Seventh edition. Accessible at: www.municipalities.co.za.

^f Mid-Year Population Estimates 2018, Stats SA.

Annual trends, 2013/14 - 2018/19



Section B: Profile Northern Cape Province



Zwelentlanga Fatman Mgcawu District Municipality (DC8)

The Zwelentlanga Fatman Mgcawu District Municipality^g (previously Siyanda District Municipality) is a Category C municipality forming the mid-northern section of the Northern Cape Province, bordering with Botswana in the north and Namibia in the west. This district comprises five local municipalities: Dawid Kruiper, Kai !Garib, Tsantsabane, !Kheis and Kgatelopele. Upington is the district municipal capital, where the municipal government is located.

Population (2018)^h: 263 401

Population density (2018): 2.6 persons per km²

Estimated medical scheme coverage (2018): 15.8%

Burden of disease profile

For the percentage of deaths by broad cause, deaths are classified into four groups, namely: (i) injuries; (ii) non-communicable diseases; (iii) HIV and TB; and (iv) communicable diseases together with maternal, perinatal and nutritional conditions. Data are given by gender and age group for the period 2013 - 2015.

Percentage of deaths by broad cause, 2013 - 2015

District	Age Group	Female				Male			
ZF Mgcawu:	<1 year	77%				82%			
DC8	1-4	56%	16%	12%	16%	46%	15%	18%	21%
	5-14	29%	11%	19%	41%	7%	17%	18%	58%
	15-24	11%	48%	9%	32%	4%	11%	12%	72%
	25-49	10%	53%	28%	10%	7%	40%	24%	28%
	50+	10%	10%	76%	4%	8%	16%	71%	5%

Source: Stats SA.

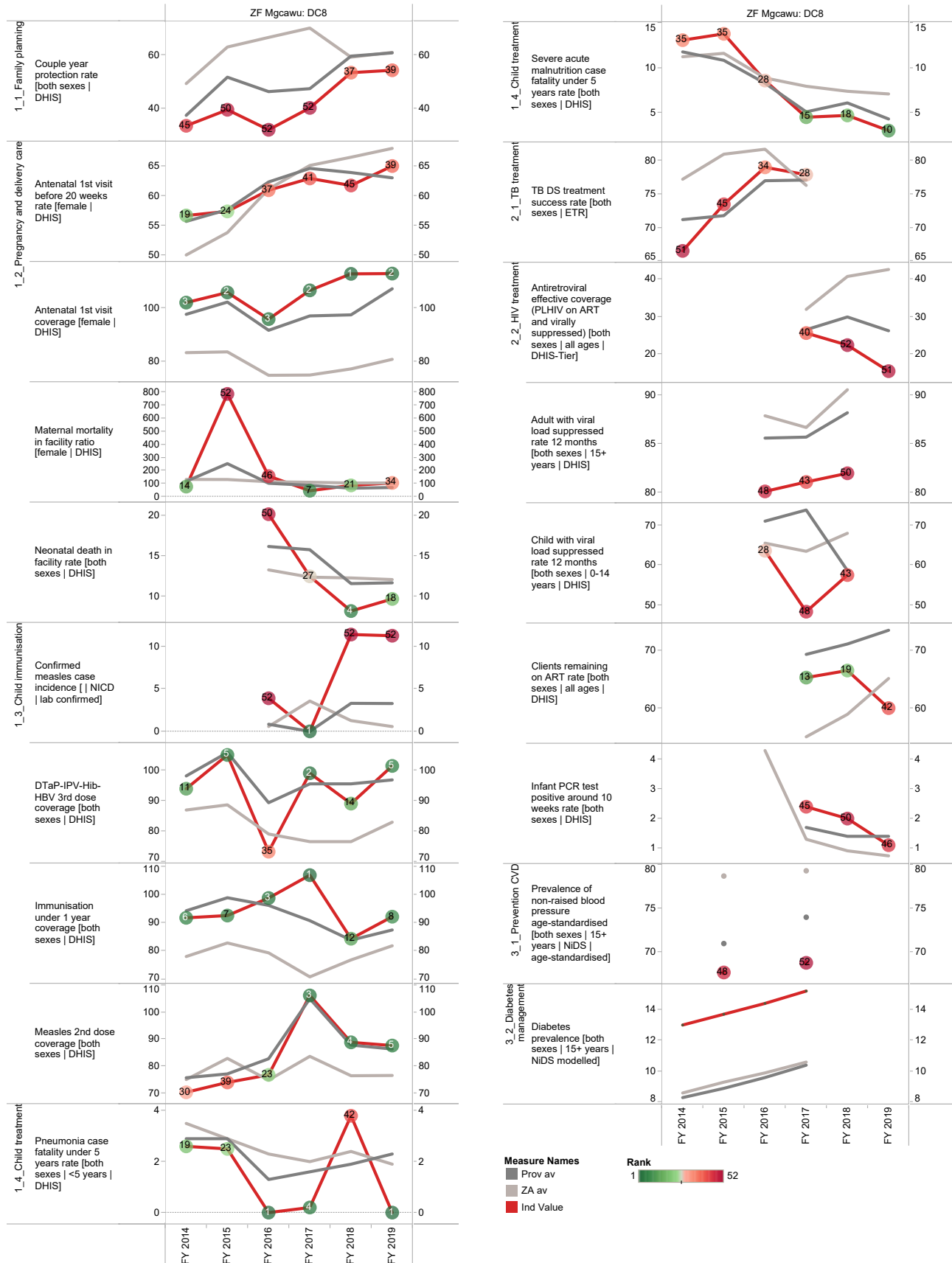
Broadcause
 Injury
 NCD
 HIV and TB
 Comm_mat_peri_nut

^g The Local Government Handbook South Africa 2017. A complete guide to municipalities in South Africa. Seventh edition. Accessible at: www.municipalities.co.za.

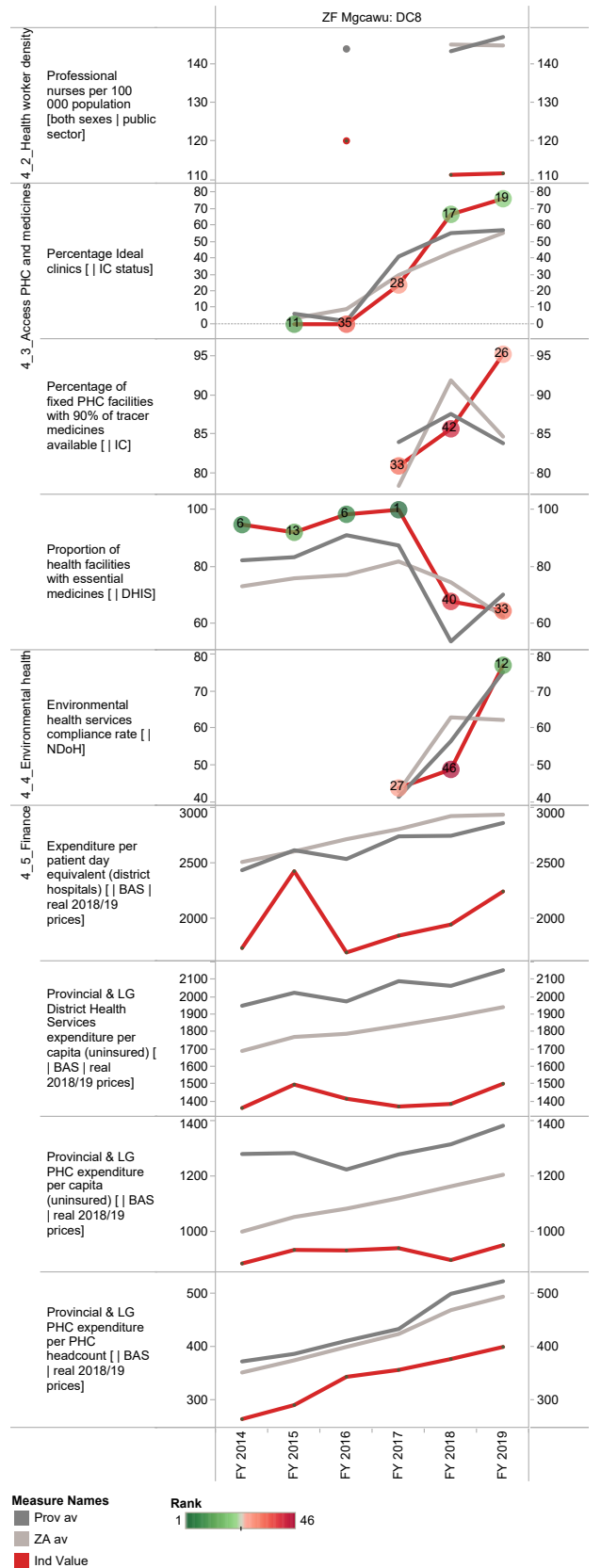
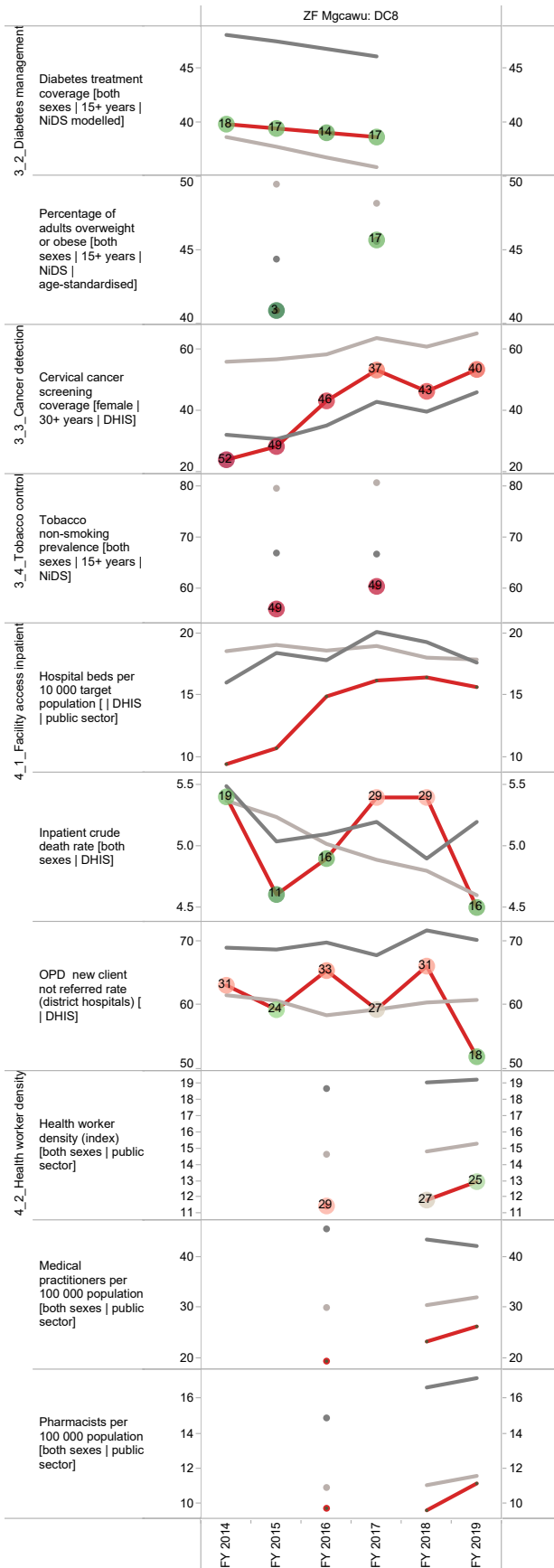
^h Mid-Year Population Estimates 2018, Stats SA.

Section B: Profile Northern Cape Province

Annual trends, 2013/14 - 2018/19



Section B: Profile Northern Cape Province



Measure Names
 ■ Prov av
 ■ ZA av
 ■ Ind Value

Rank
 1 46

Frances Baard District Municipality (DC9)

The Frances Baard District Municipalityⁱ is a Category C municipality located in the far eastern portion of the Northern Cape Province. It comprises the four local municipalities of Dikgatlong, Magareng, Phokwane and Sol Plaatje.

Population (2018)^j: 381 186

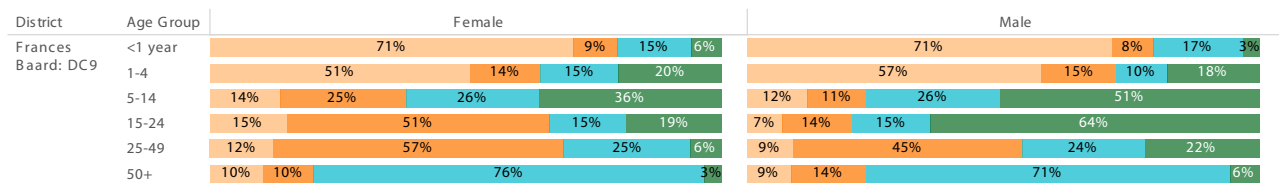
Population density (2018): 29.7 persons per km²

Estimated medical scheme coverage (2018): 15.7%

Burden of disease profile

For the percentage of deaths by broad cause, deaths are classified into four groups, namely: (i) injuries; (ii) non-communicable diseases; (iii) HIV and TB; and (iv) communicable diseases together with maternal, perinatal and nutritional conditions. Data are given by gender and age group for the period 2013 - 2015.

Percentage of deaths by broad cause, 2013 - 2015



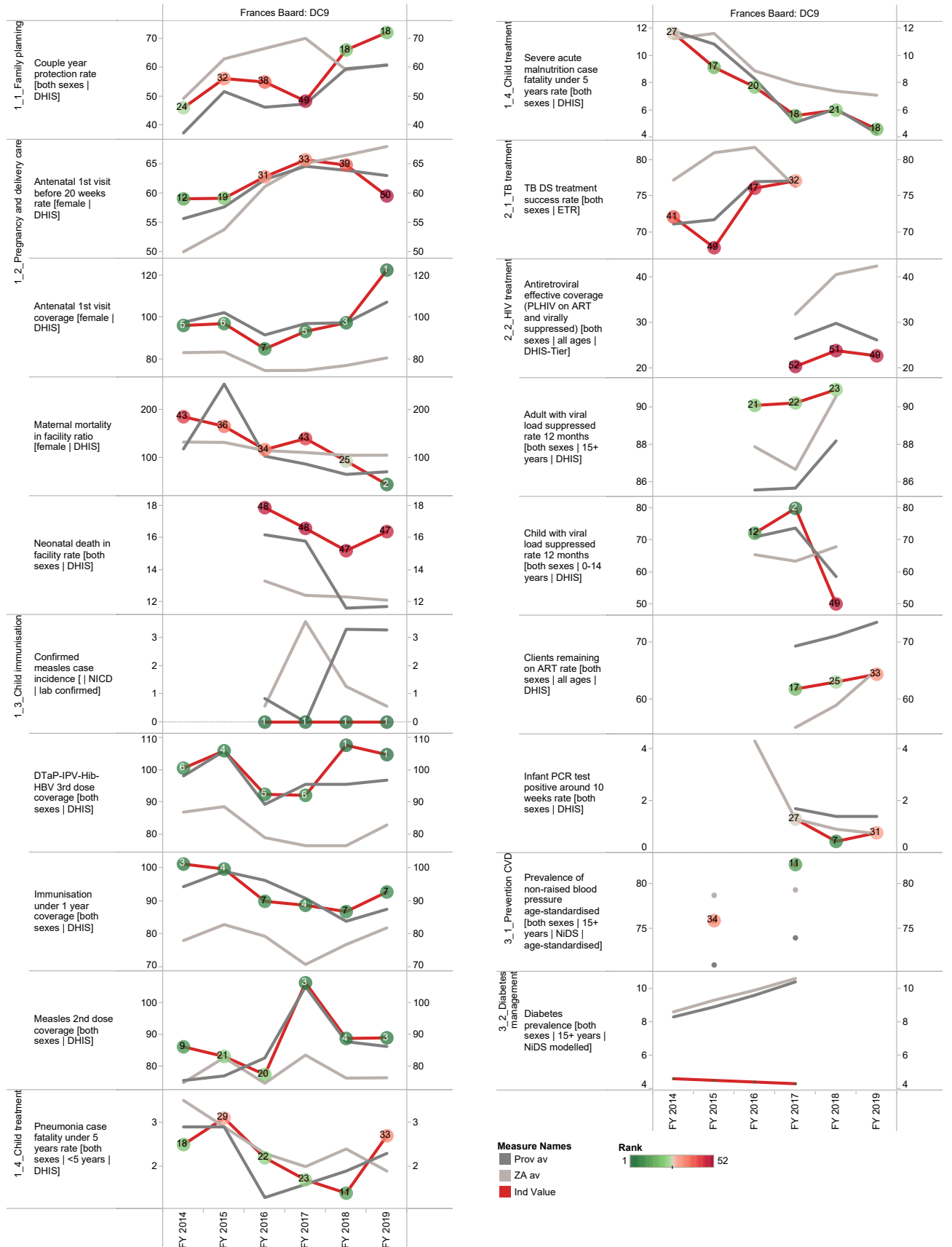
Source: Stats SA.



ⁱ The Local Government Handbook South Africa 2017. A complete guide to municipalities in South Africa. Seventh edition. Accessible at: www.municipalities.co.za.

^j Mid-Year Population Estimates 2018, Stats SA.

Annual trends, 2013/14 - 2018/19



Section B: Profile Northern Cape Province

