

15. North West Province

Bojanala District Municipality (DC37)

The Bojanala Platinum District Municipality^a is a Category C municipality situated in the North West Province. It comprises five local municipalities: Kgetlengrivier, Madibeng, Moses Kotane, Moretele and Rustenburg.

Population (2018)^b: 1 720 519

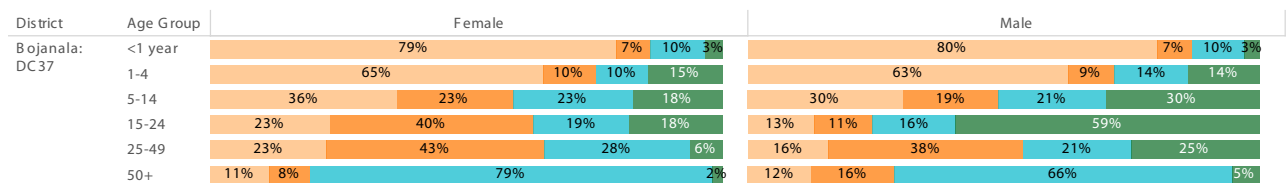
Population density (2018): 93.8 persons per km²

Estimated medical scheme coverage (2018): 14.0%

Burden of disease profile

For the percentage of deaths by broad cause, deaths are classified into four groups, namely: (i) injuries; (ii) non-communicable diseases; (iii) HIV and TB; and (iv) communicable diseases together with maternal, perinatal and nutritional conditions. Data are given by gender and age group for the period 2013 - 2015.

Percentage of deaths by broad cause, 2013 - 2015



Source: Stats SA.

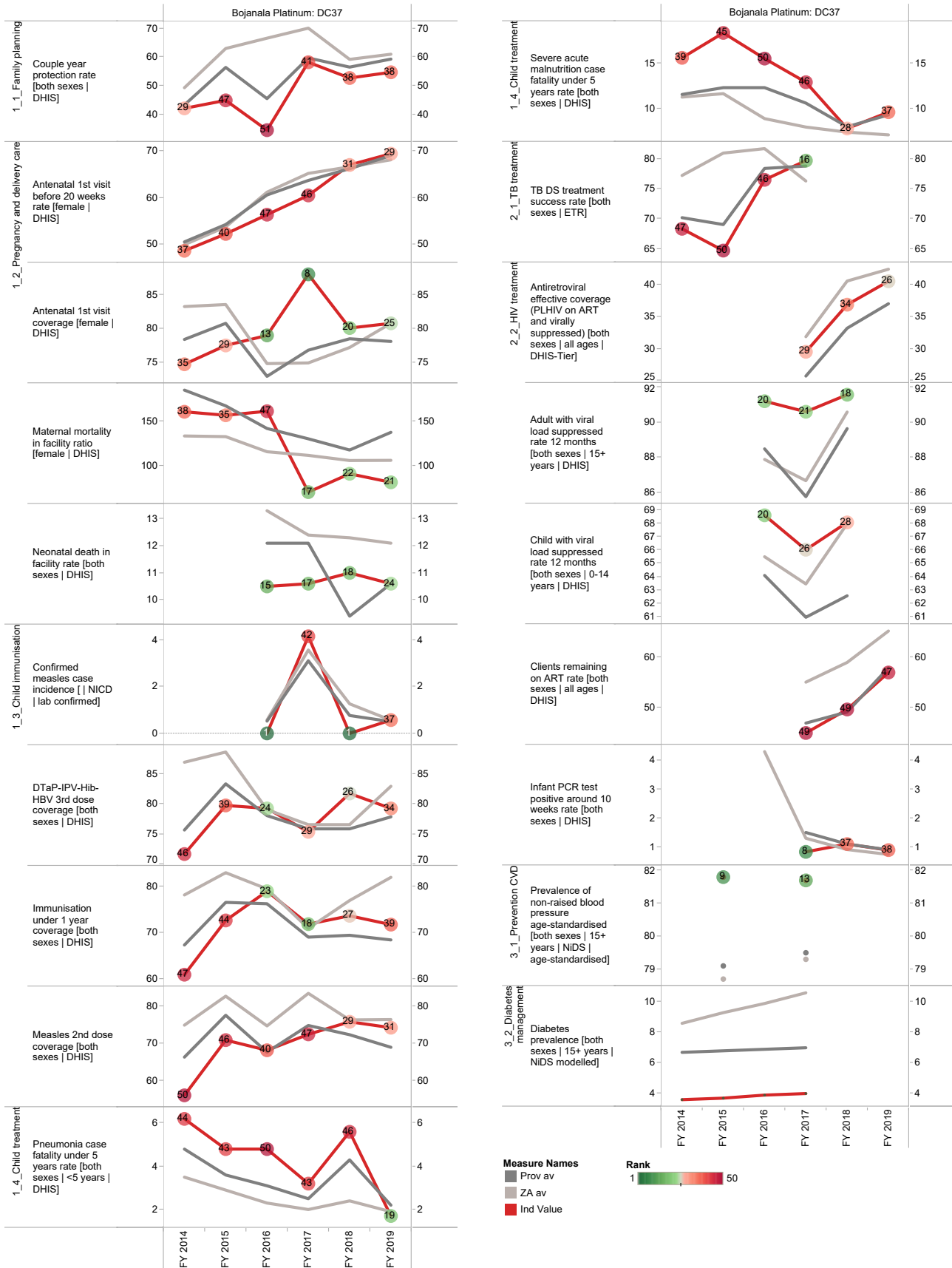
Broadcause
 Injury
 NCD
 HIV and TB
 Comm_mat_peri_nut

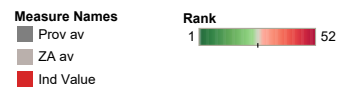
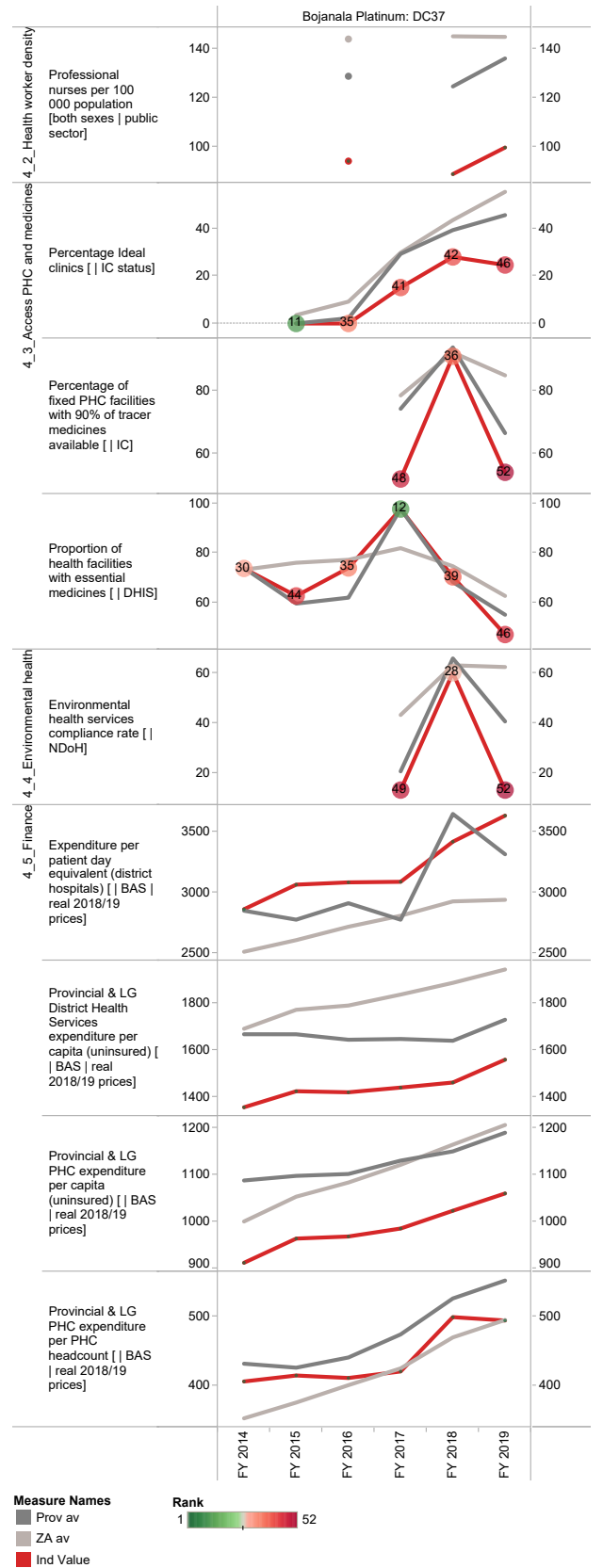
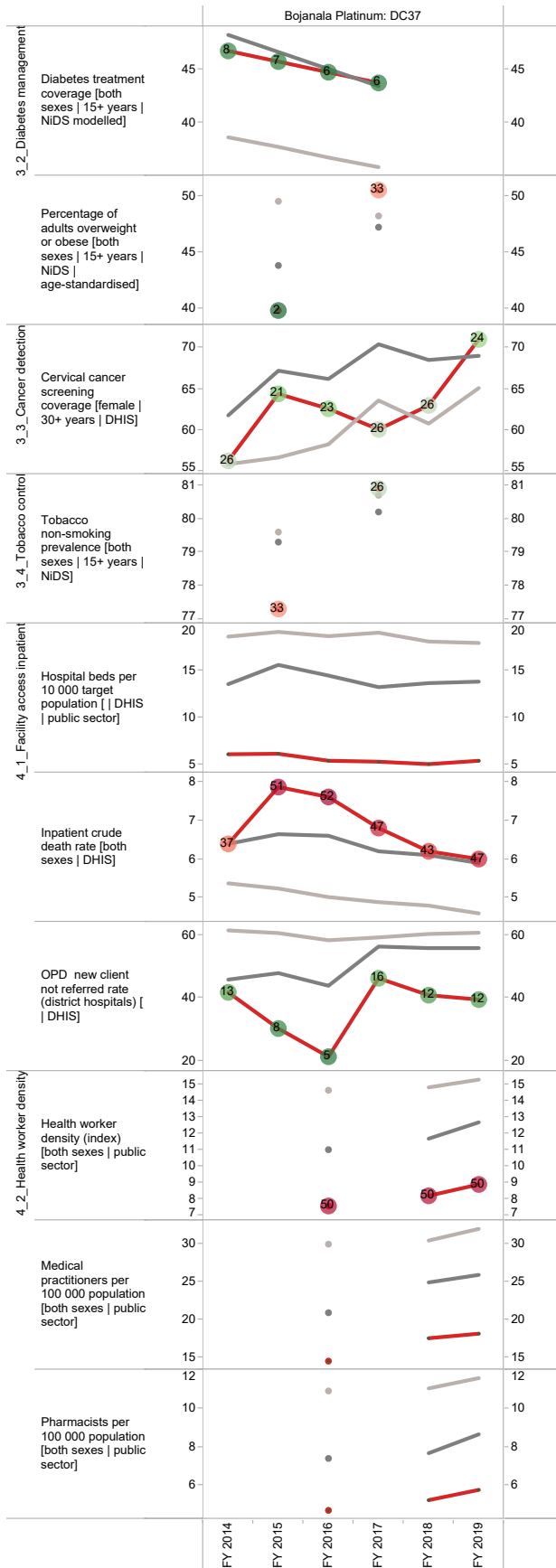
a The Local Government Handbook South Africa 2017. A complete guide to municipalities in South Africa. Seventh edition. Accessible at: www.municipalities.co.za.

b Mid-Year Population Estimates 2018, Stats SA.

Section B: Profile North West Province

Annual trends, 2013/14 - 2018/19





Ngaka Modiri Molema District Municipality (DC38)

The Ngaka Modiri Molema District Municipality^c is a Category C municipality in the North West Province. It is comprised of five local municipalities: Mahikeng, Ratlou, Ramotshere Moiloa, Ditsobotla and Tswaing.

Population (2018)^d: 957 449

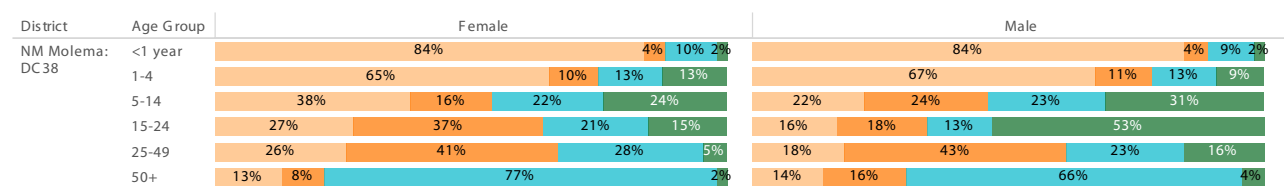
Population density (2018): 34.1 persons per km²

Estimated medical scheme coverage (2018): 9.7%

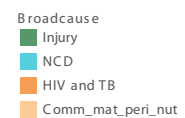
Burden of disease profile

For the percentage of deaths by broad cause, deaths are classified into four groups, namely: (i) injuries; (ii) non-communicable diseases; (iii) HIV and TB; and (iv) communicable diseases together with maternal, perinatal and nutritional conditions. Data are given by gender and age group for the period 2013 - 2015.

Percentage of deaths by broad cause, 2013 - 2015



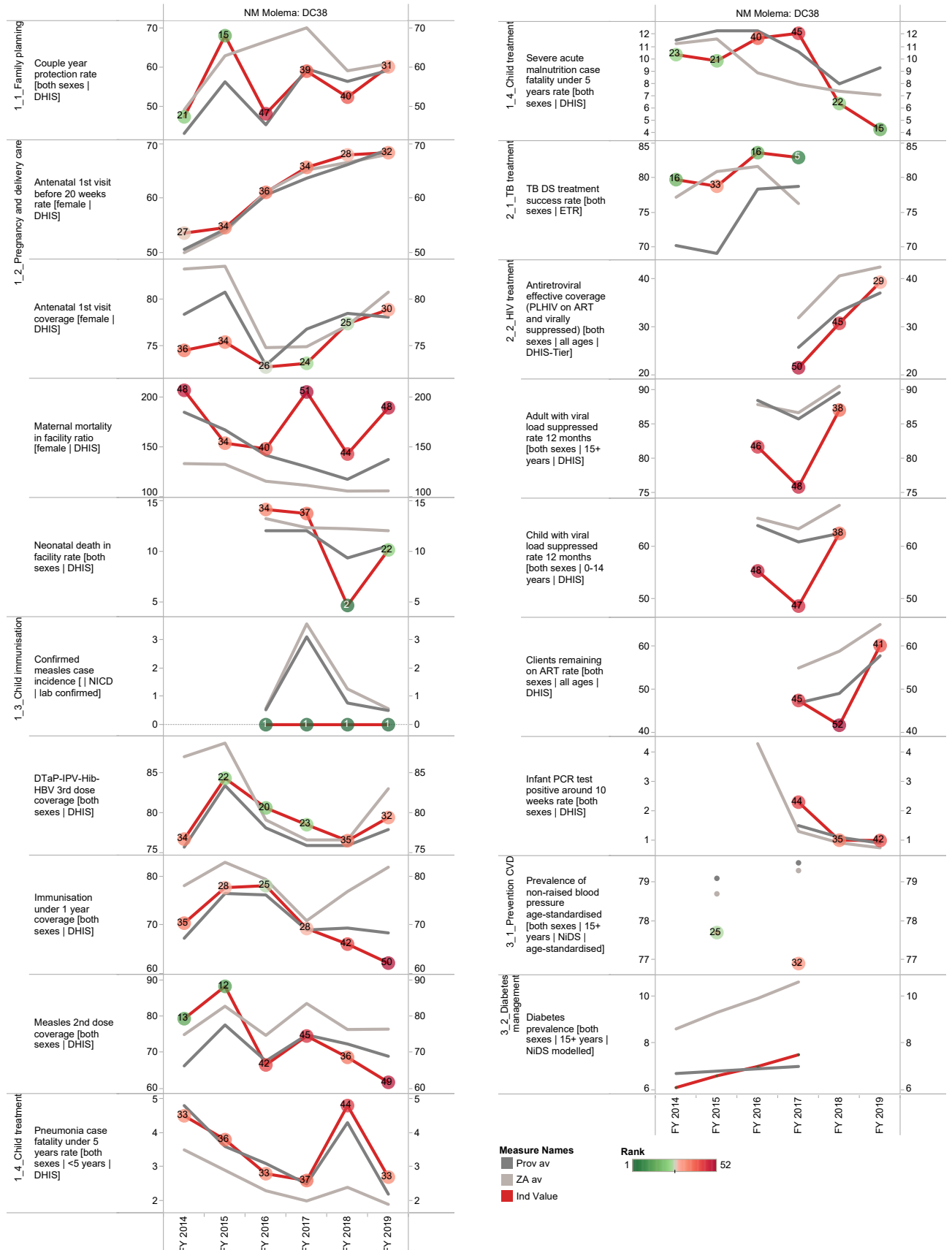
Source: Stats SA.



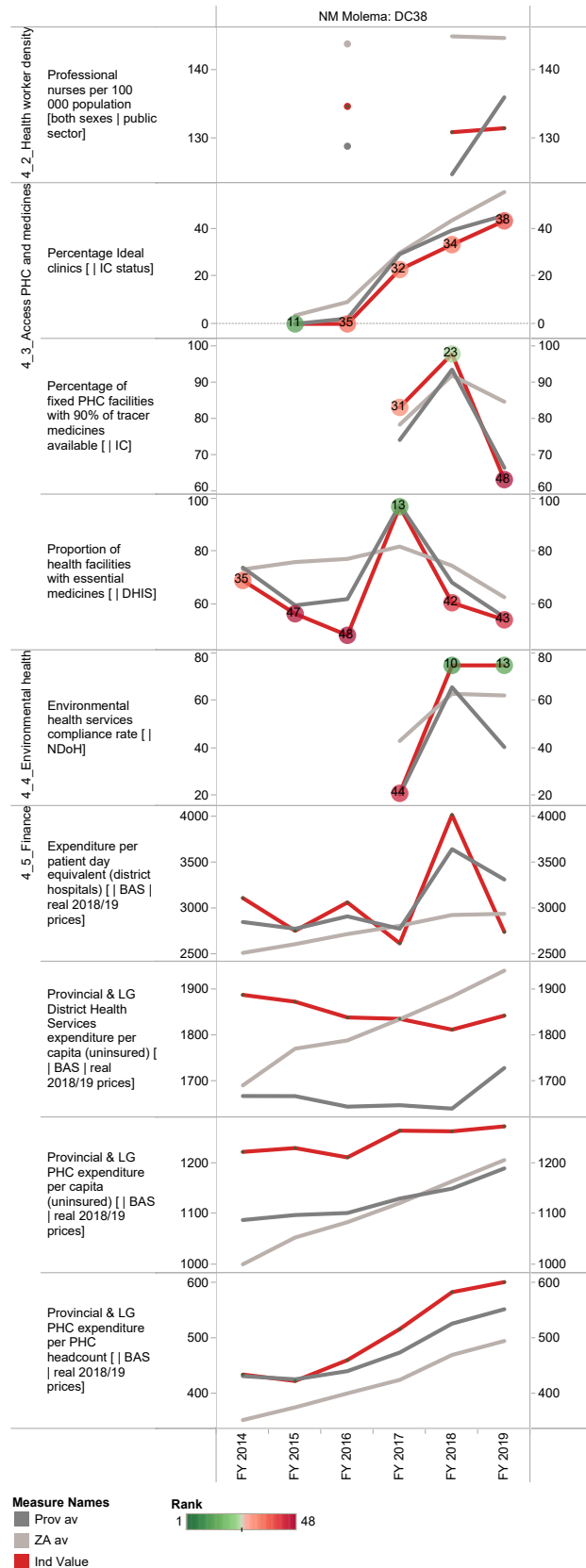
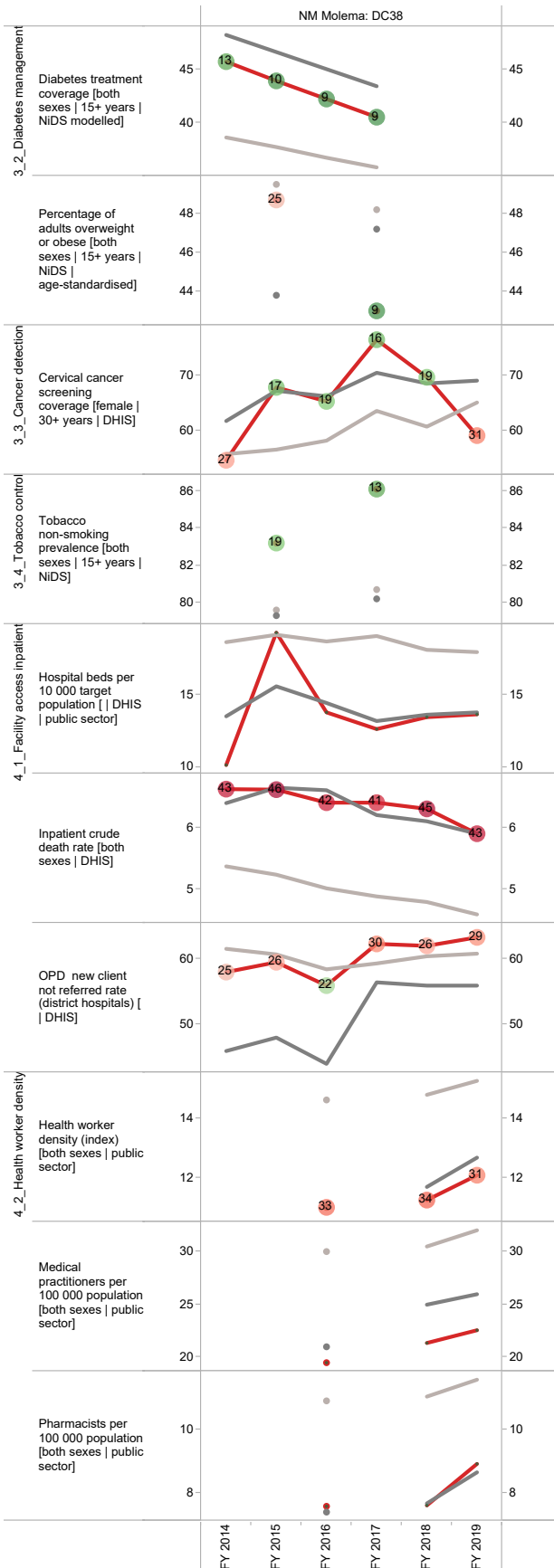
^c The Local Government Handbook South Africa 2017. A complete guide to municipalities in South Africa. Seventh edition. Accessible at: www.municipalities.co.za.

^d Mid-Year Population Estimates 2018, Stats SA.

Annual trends, 2013/14 - 2018/19



Section B: Profile North West Province



Dr Ruth Segomotsi Mompati District Municipality (DC39)

The Dr Ruth Segomotsi Mompati District Municipality^e is a Category C municipality located in the North West Province. The district comprises five local municipalities: Naledi, Greater Taung, Kagisano-Molopo, Mamusa and Lekwa-Teemane.

Population (2018)^f: 479 326

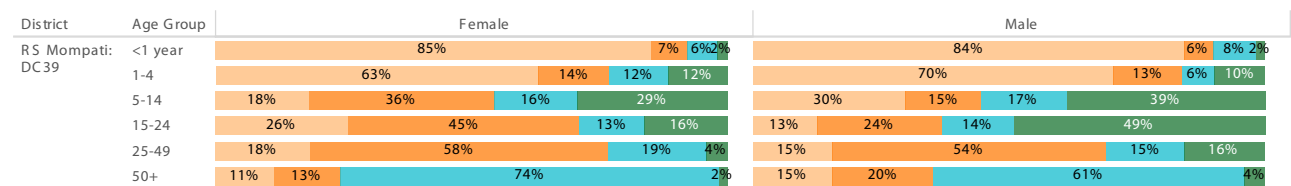
Population density (2018): 11.0 persons per km²

Estimated medical scheme coverage (2018): 7.3%

Burden of disease profile

For the percentage of deaths by broad cause, deaths are classified into four groups, namely: (i) injuries; (ii) non-communicable diseases; (iii) HIV and TB; and (iv) communicable diseases together with maternal, perinatal and nutritional conditions. Data are given by gender and age group for the period 2013 - 2015.

Percentage of deaths by broad cause, 2013 - 2015



Source: Stats SA.

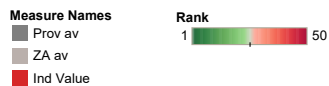
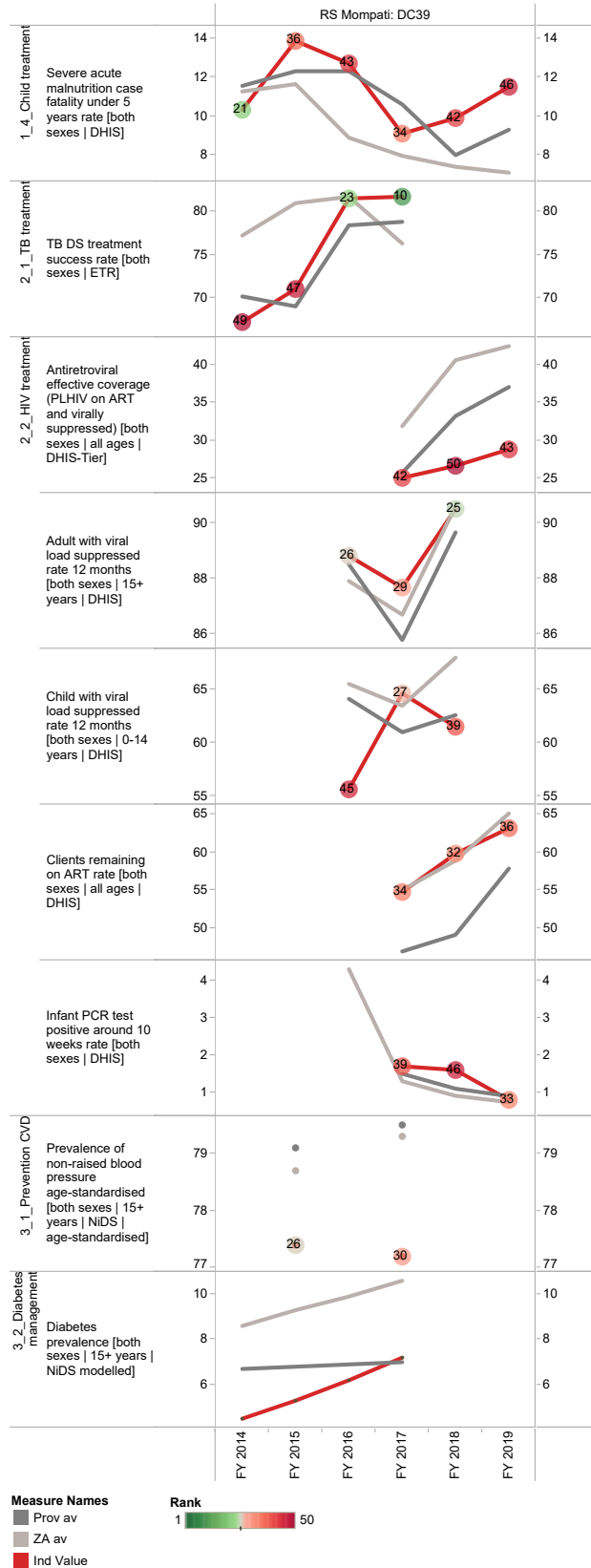
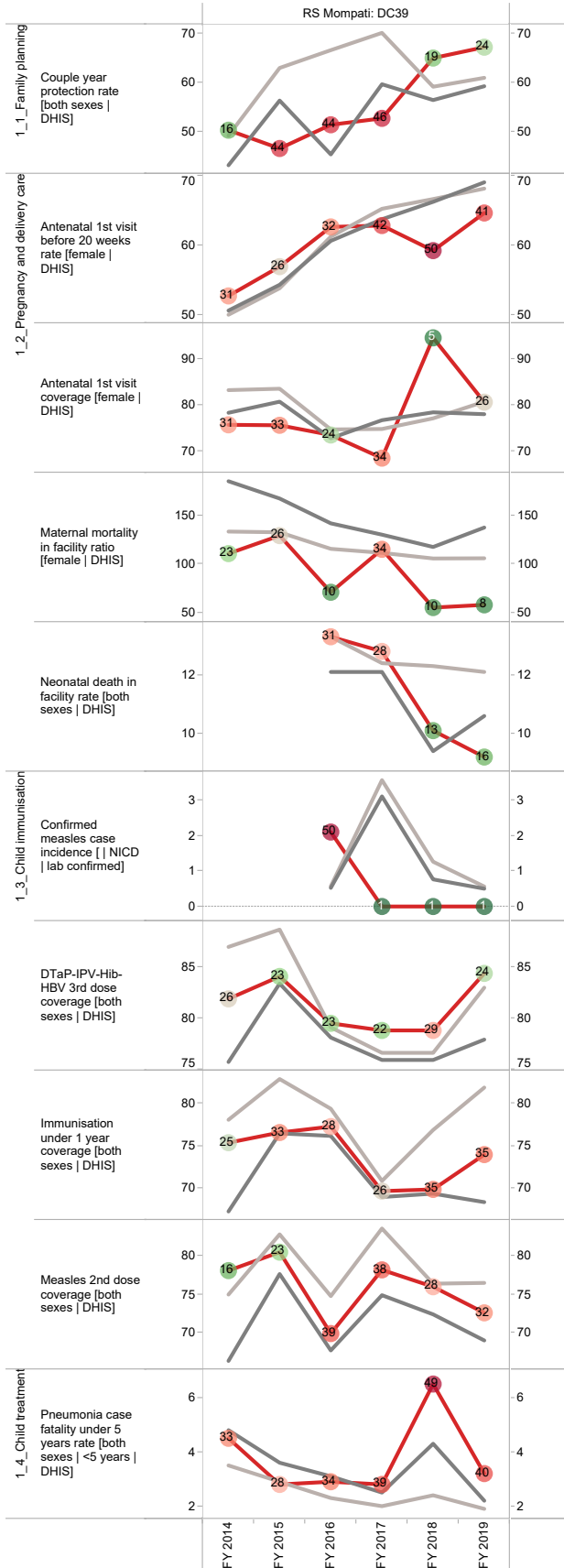
Broadcause
■ Injury
■ NCD
■ HIV and TB
■ Comm_mat_peri_nut

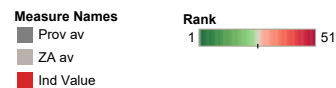
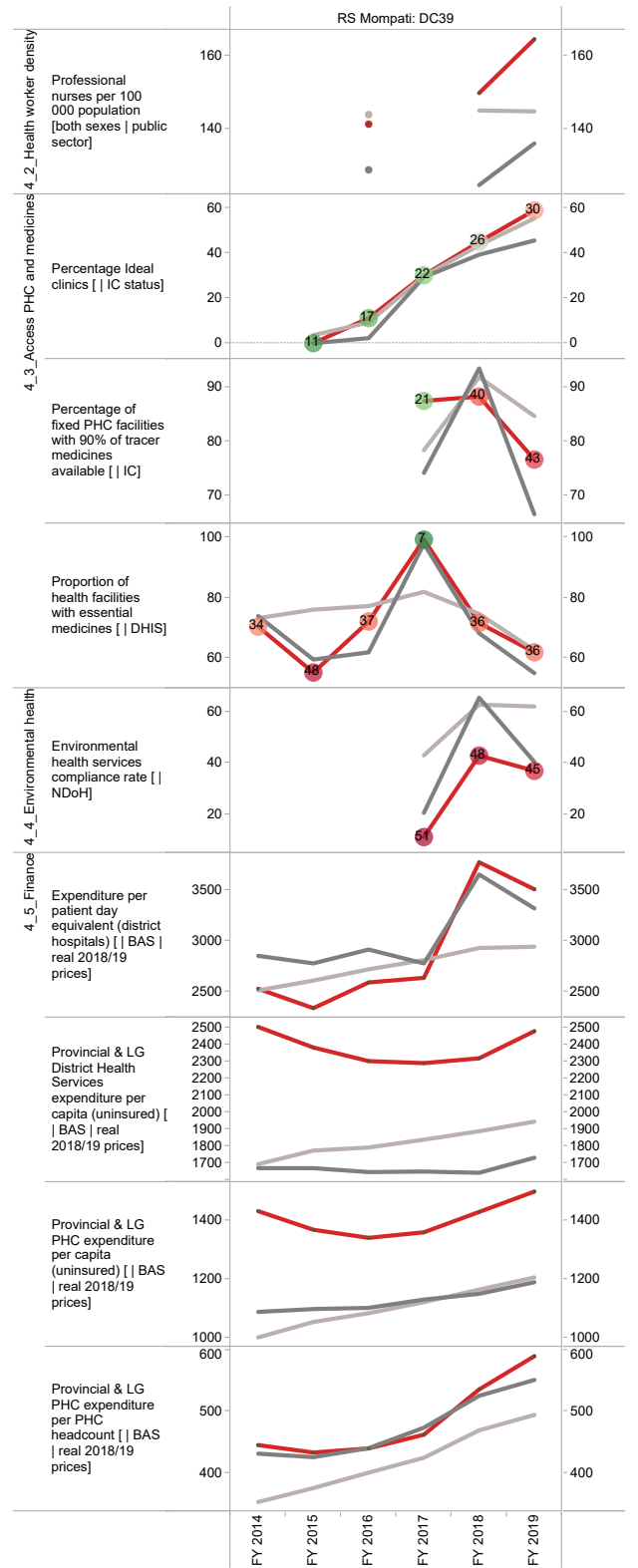
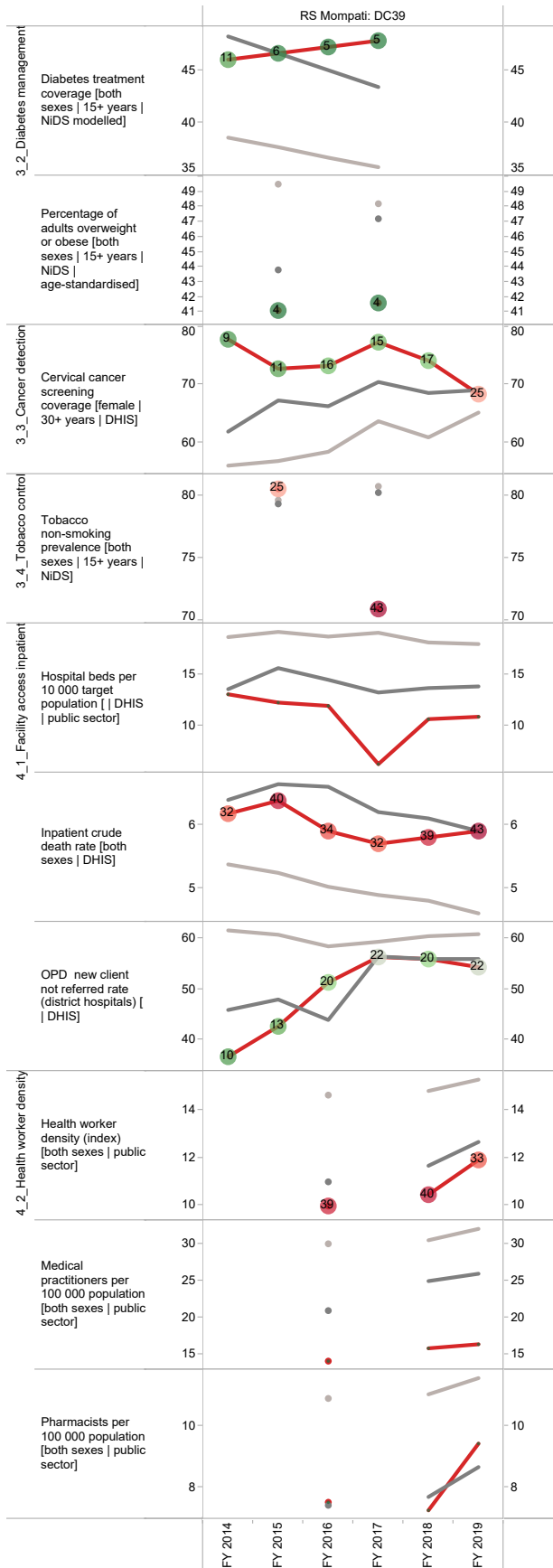
^e The Local Government Handbook South Africa 2017. A complete guide to municipalities in South Africa. Seventh edition. Accessible at: www.municipalities.co.za.

^f Mid-Year Population Estimates 2018, Stats SA.

Section B: Profile North West Province

Annual trends, 2013/14 - 2018/19





Dr Kenneth Kaunda District Municipality (DC40)

The Dr Kenneth Kaunda District Municipality^g is a Category C municipality in the North West Province. The district consists of three local municipalities: JB Marks, City of Matlosana and Maquassi Hills.

Population (2018)^h: 761 652

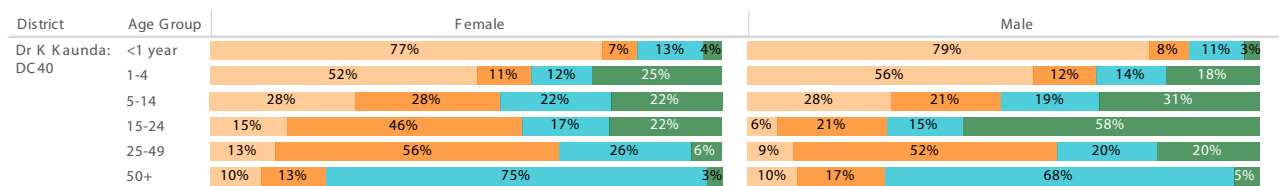
Population density (2018): 51.9 persons per km²

Estimated medical scheme coverage (2018): 12.8%

Burden of disease profile

For the percentage of deaths by broad cause, deaths are classified into four groups, namely: (i) injuries; (ii) non-communicable diseases; (iii) HIV and TB; and (iv) communicable diseases together with maternal, perinatal and nutritional conditions. Data are given by gender and age group for the period 2013 - 2015.

Percentage of deaths by broad cause, 2013 - 2015



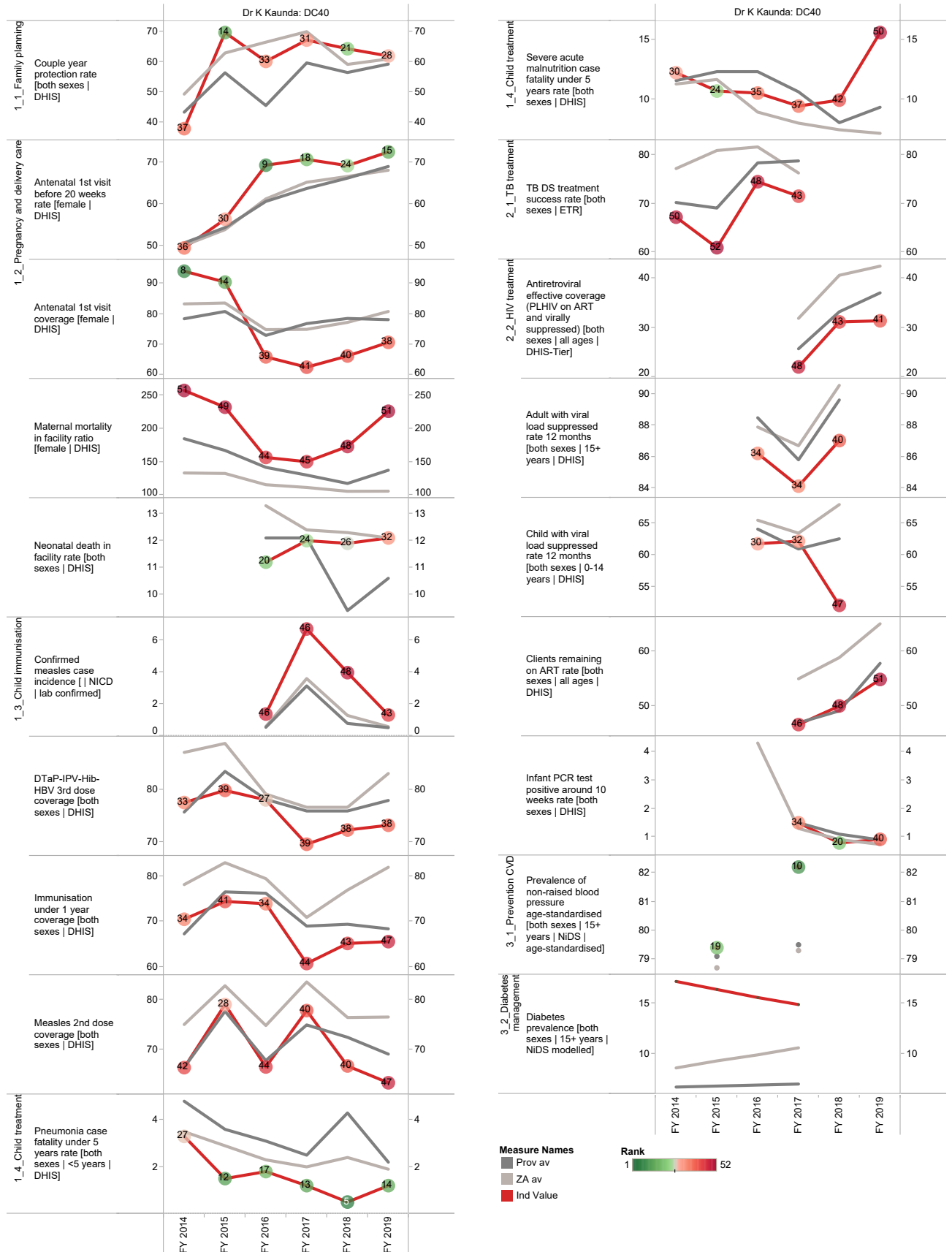
Source: Stats SA.



^g The Local Government Handbook South Africa 2017. A complete guide to municipalities in South Africa. Seventh edition. Accessible at: www.municipalities.co.za.

^h Mid-Year Population Estimates 2018, Stats SA.

Annual trends, 2013/14 - 2018/19



Section B: Profile North West Province

