

## 16. Western Cape Province

### Cape Town Metropolitan Municipality (CPT)

The City of Cape Town Metropolitan Municipality<sup>a</sup> is situated on the southern peninsula of the Western Cape Province. The City of Cape Town Metropolitan Municipality incorporates eight health sub-districts, namely, Cape Town Eastern, Cape Town Northern, Cape Town Southern, Cape Town Western, Khayelitsha, Klipfontein, Mitchell's Plain and Tygerberg.

**Population (2018)<sup>b</sup>:** 4 140 565

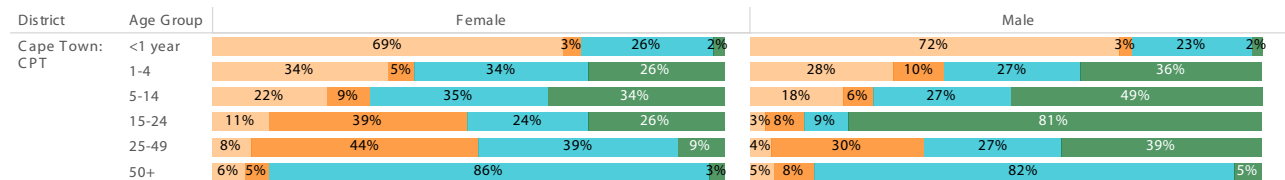
**Population density (2018):** 1 692.8 persons per km<sup>2</sup>

**Estimated medical scheme coverage (2018):** 22.2%

#### Burden of disease profile

For the percentage of deaths by broad cause, deaths are classified into four groups, namely: (i) injuries; (ii) non-communicable diseases; (iii) HIV and TB; and (iv) communicable diseases together with maternal, perinatal and nutritional conditions. Data are given by gender and age group for the period 2013 - 2015.

#### Percentage of deaths by broad cause, 2013 - 2015



Source: Stats SA.

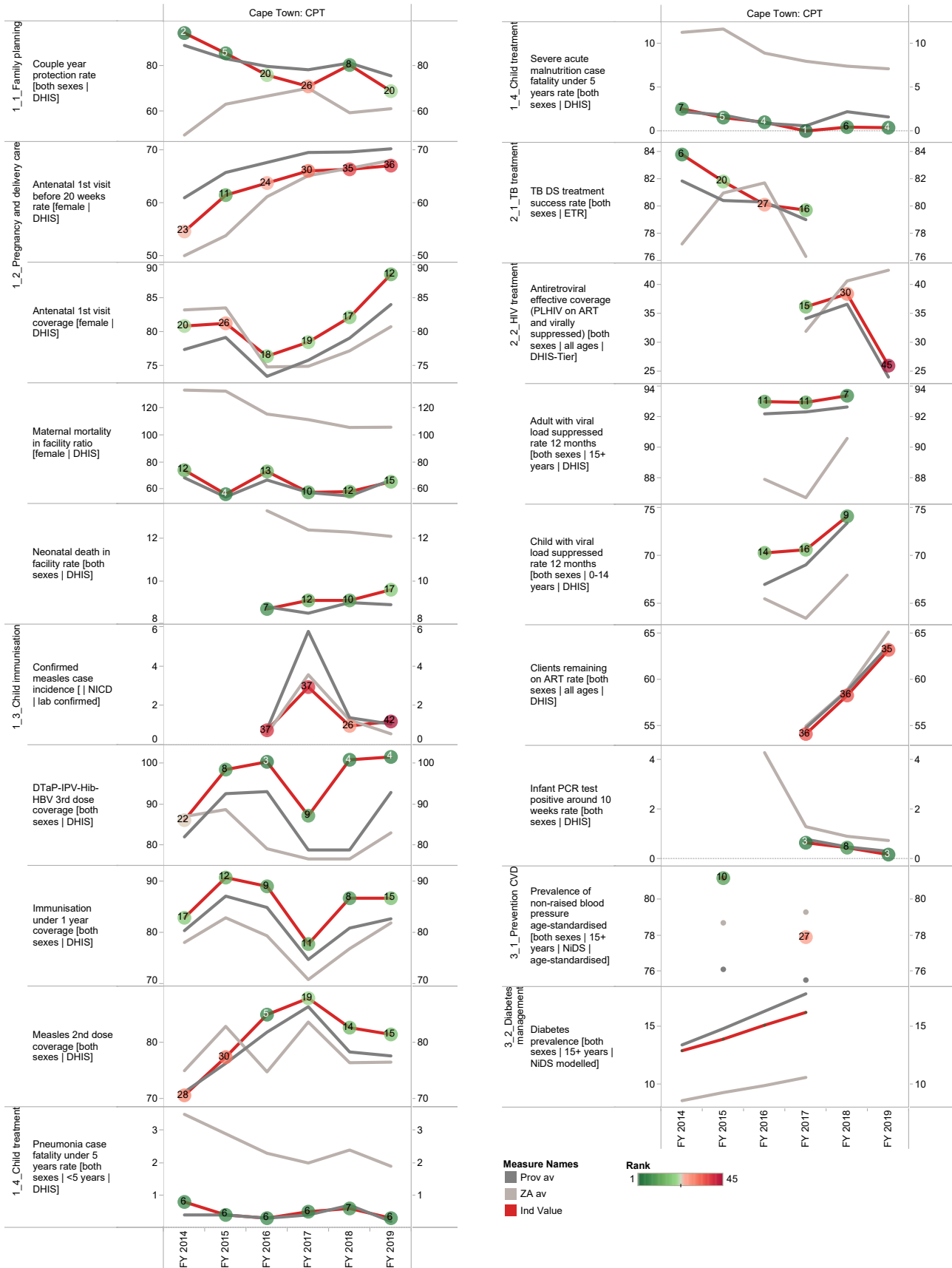
Broadcause  
 Injury  
 NCD  
 HIV and TB  
 Comm\_mat\_peri\_nut

a The Local Government Handbook South Africa 2017. A complete guide to municipalities in South Africa. Seventh edition. Accessible at: [www.municipalities.co.za](http://www.municipalities.co.za).

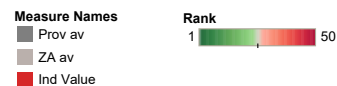
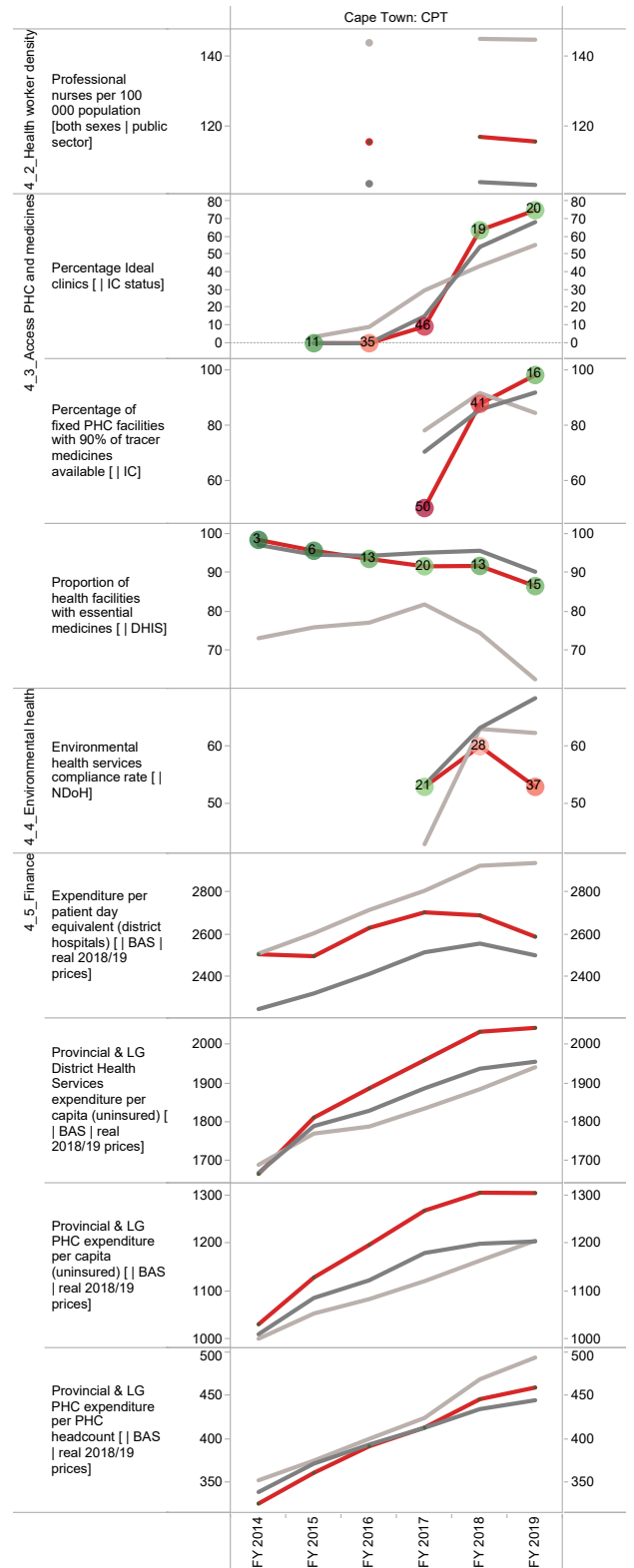
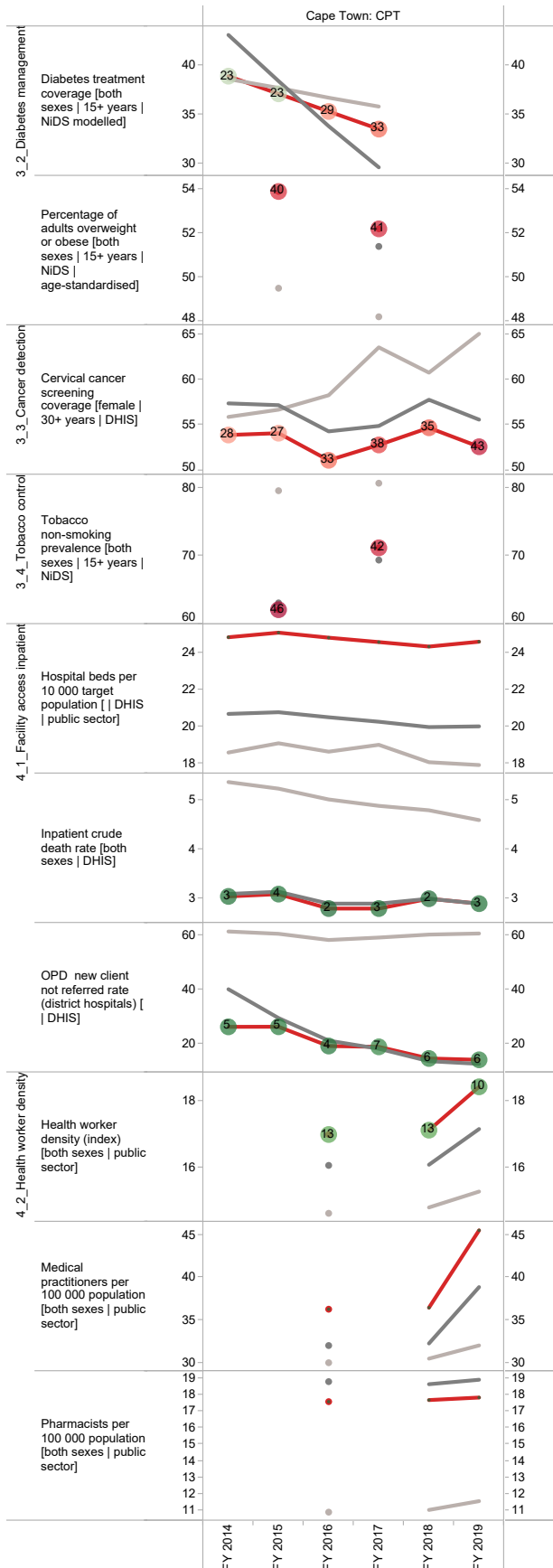
b Mid-Year Population Estimates 2018, Stats SA.

## Section B: Profile Western Cape Province

### Annual trends, 2013/14 - 2018/19



Section B: Profile Western Cape Province



## West Coast District Municipality (DC1)

The West Coast District Municipality<sup>c</sup> is a Category C municipality located in the Western Cape Province. It is comprised of five local municipalities: Swartland, Bergrivier, Matzikama, Cederberg, and Saldanha Bay.

Population (2018)<sup>d</sup>: 459 686

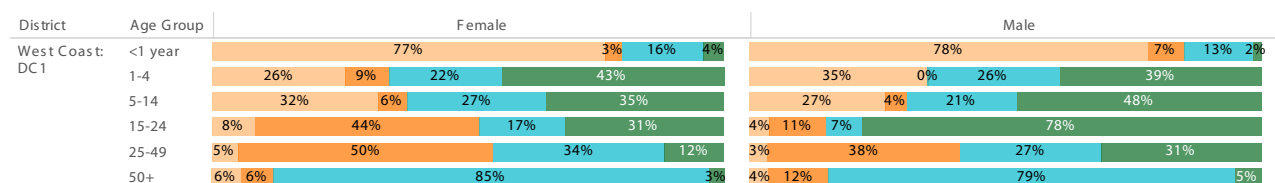
Population density (2018): 14.8 persons per km<sup>2</sup>

Estimated medical scheme coverage (2018): 17.3%

### Burden of disease profile

For the percentage of deaths by broad cause, deaths are classified into four groups, namely: (i) injuries; (ii) non-communicable diseases; (iii) HIV and TB; and (iv) communicable diseases together with maternal, perinatal and nutritional conditions. Data are given by gender and age group for the period 2013 - 2015.

### Percentage of deaths by broad cause, 2013 - 2015



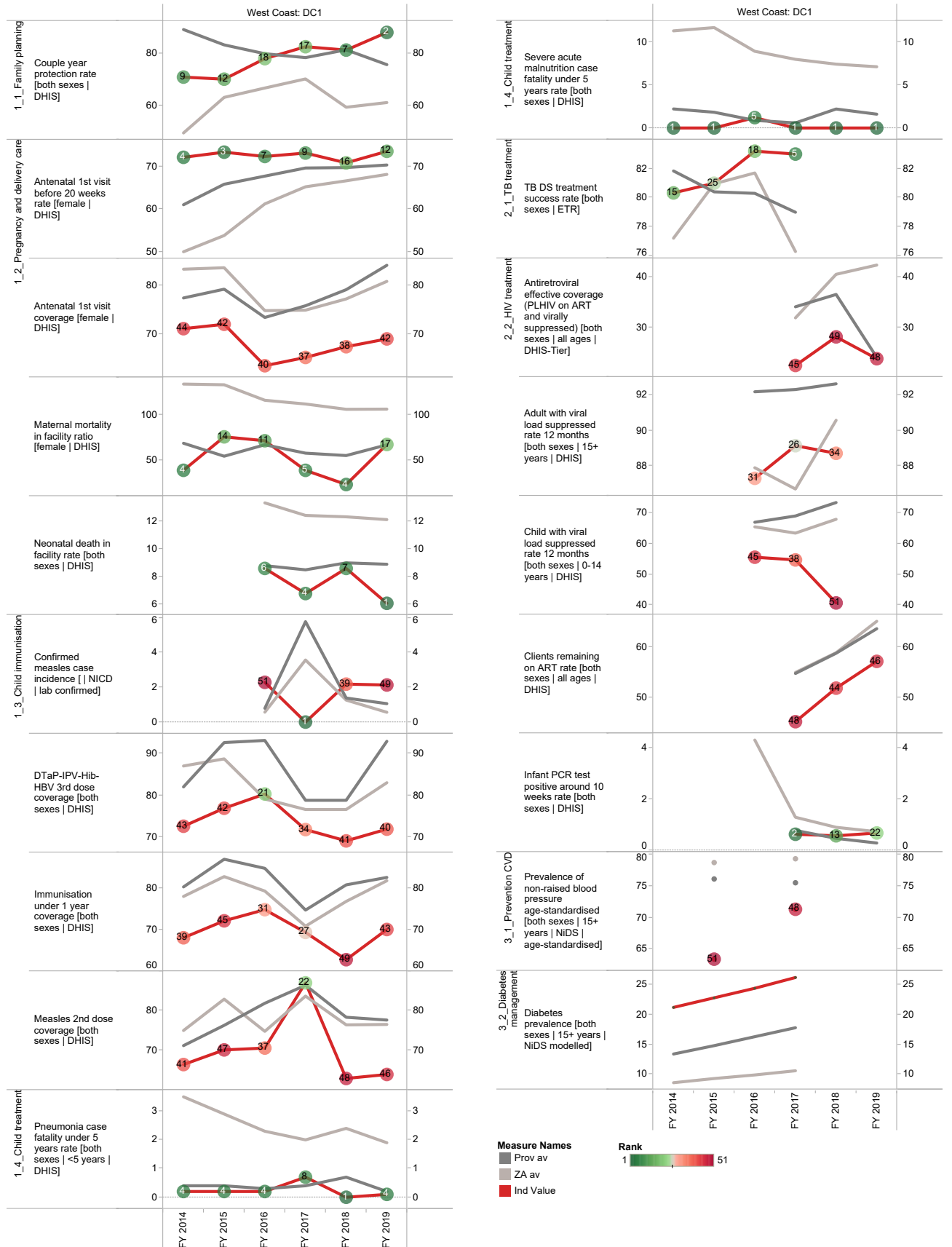
Source: Stats SA.



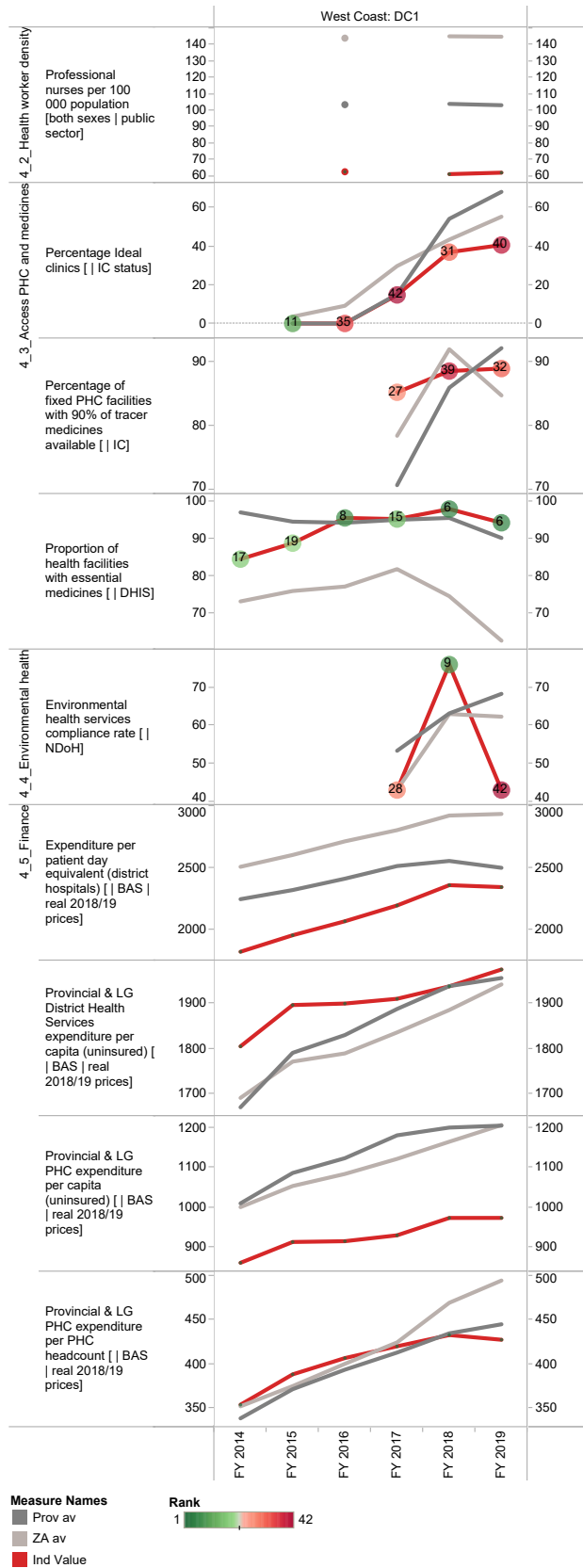
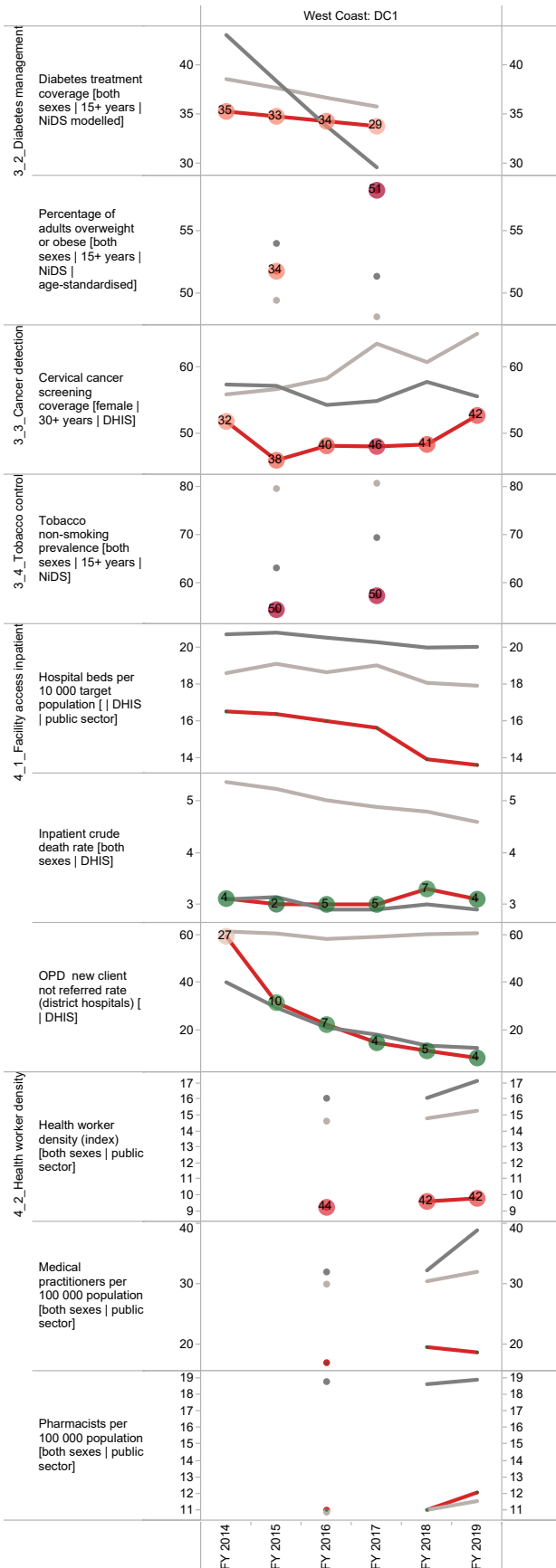
<sup>c</sup> The Local Government Handbook South Africa 2017. A complete guide to municipalities in South Africa. Seventh edition. Accessible at: [www.municipalities.co.za](http://www.municipalities.co.za).

<sup>d</sup> Mid-Year Population Estimates 2018, Stats SA.

Annual trends, 2013/14 - 2018/19



## Section B: Profile Western Cape Province



## Cape Winelands District Municipality (DC2)

The Cape Winelands District Municipality<sup>e</sup> is a Category C municipality situated in the Western Cape Province. The district includes five local municipalities, namely: Drakenstein, Stellenbosch, Witzenberg, Breede Valley and Langeberg.

**Population (2018)<sup>f</sup>:** 916 384

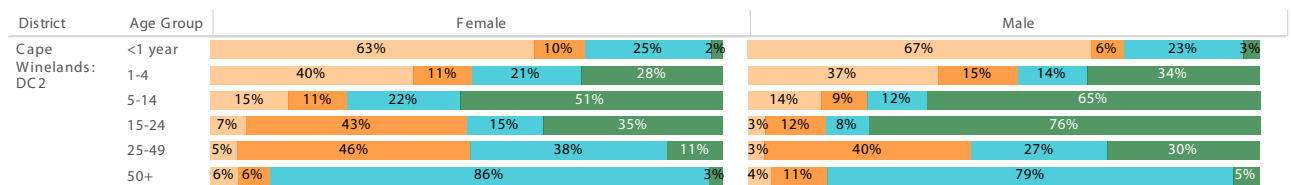
**Population density (2018):** 42.7 persons per km<sup>2</sup>

**Estimated medical scheme coverage (2018):** 16.4%

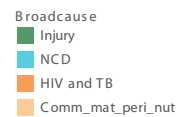
### Burden of disease profile

For the percentage of deaths by broad cause, deaths are classified into four groups, namely: (i) injuries; (ii) non-communicable diseases; (iii) HIV and TB; and (iv) communicable diseases together with maternal, perinatal and nutritional conditions. Data are given by gender and age group for the period 2013 - 2015.

### Percentage of deaths by broad cause, 2013 - 2015



Source: Stats SA.

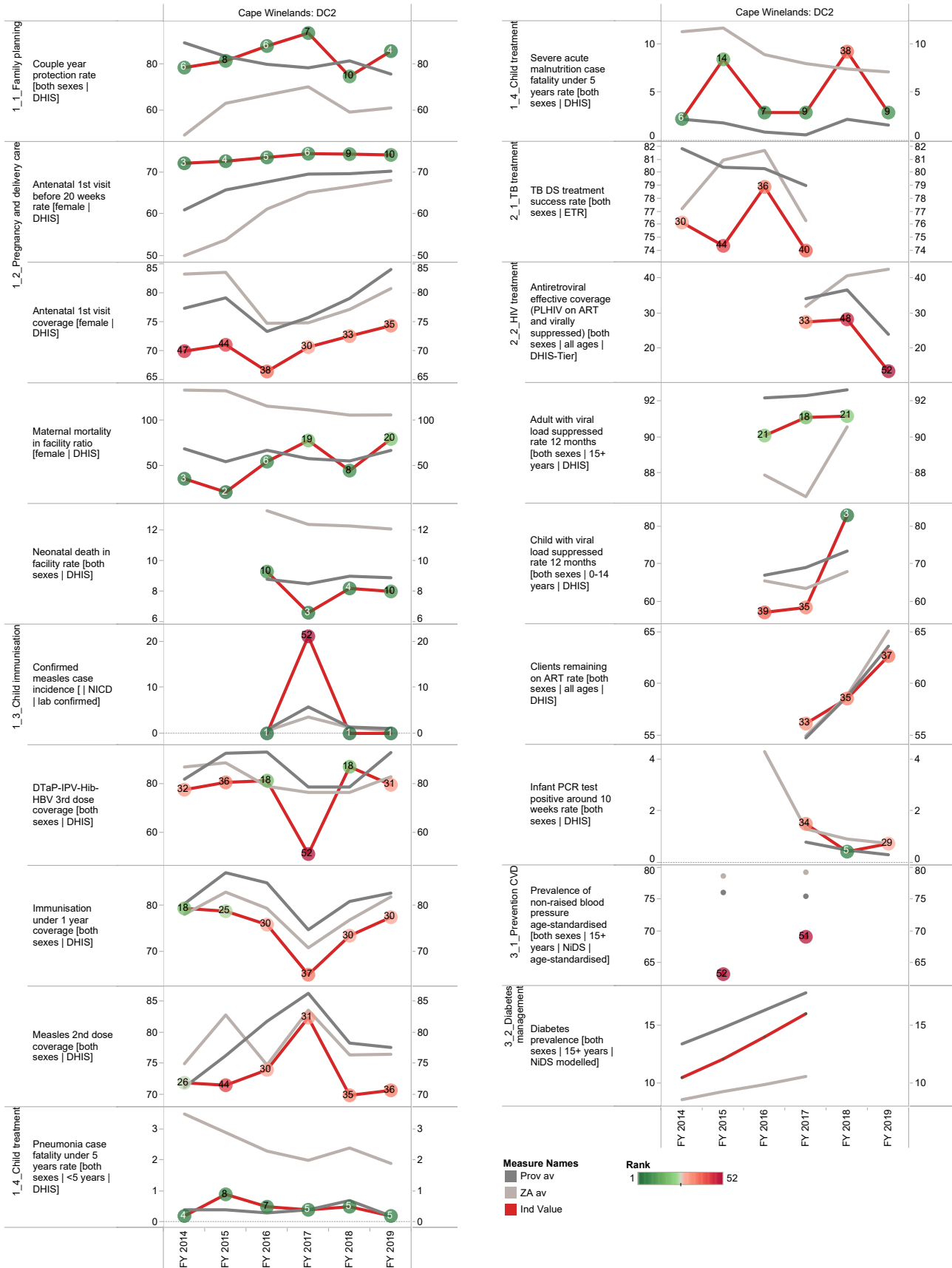


<sup>e</sup> The Local Government Handbook South Africa 2017. A complete guide to municipalities in South Africa. Seventh edition. Accessible at: [www.municipalities.co.za](http://www.municipalities.co.za).

<sup>f</sup> Mid-Year Population Estimates 2018, Stats SA.

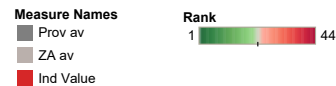
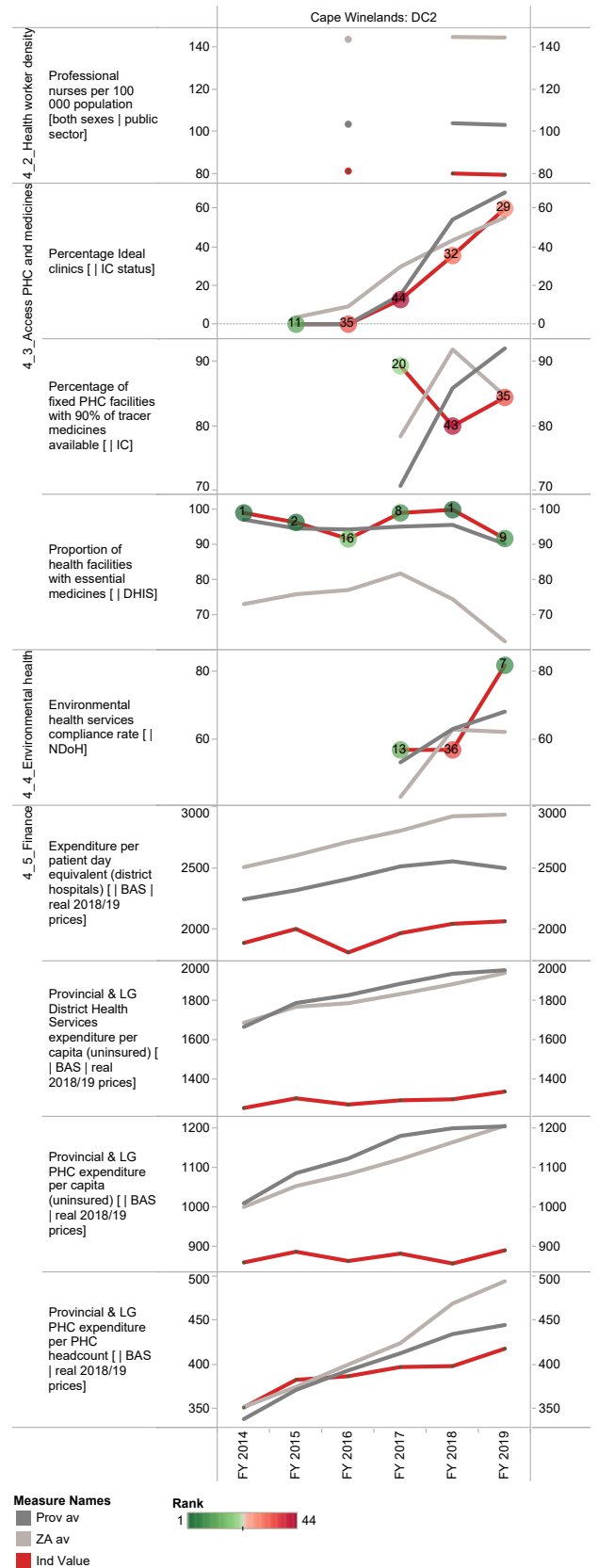
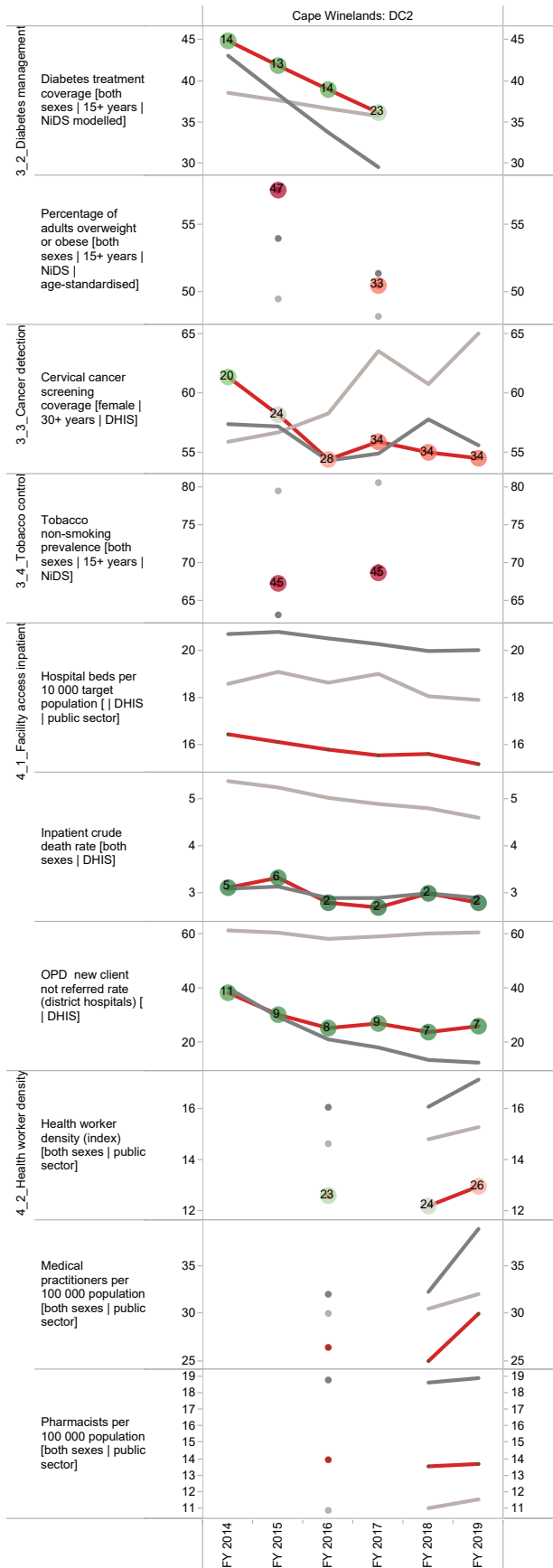
## Section B: Profile Western Cape Province

### Annual trends, 2013/14 - 2018/19





Section B: Profile Western Cape Province



## Overberg District Municipality (DC3)

The Overberg District Municipality<sup>g</sup> is a Category C municipality situated in the Western Cape Province. The following local municipalities form part of the Overberg district: Theewaterskloof, Swellendam, Overstrand and Cape Agulhas.

Population (2018)<sup>h</sup>: 293 504

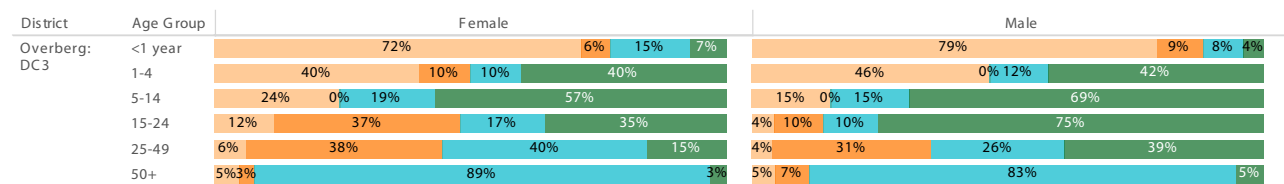
Population density (2018): 24.0 persons per km<sup>2</sup>

Estimated medical scheme coverage (2018): 16.4%

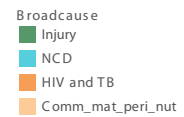
### Burden of disease profile

For the percentage of deaths by broad cause, deaths are classified into four groups, namely: (i) injuries; (ii) non-communicable diseases; (iii) HIV and TB; and (iv) communicable diseases together with maternal, perinatal and nutritional conditions. Data are given by gender and age group for the period 2013 - 2015.

### Percentage of deaths by broad cause, 2013 - 2015



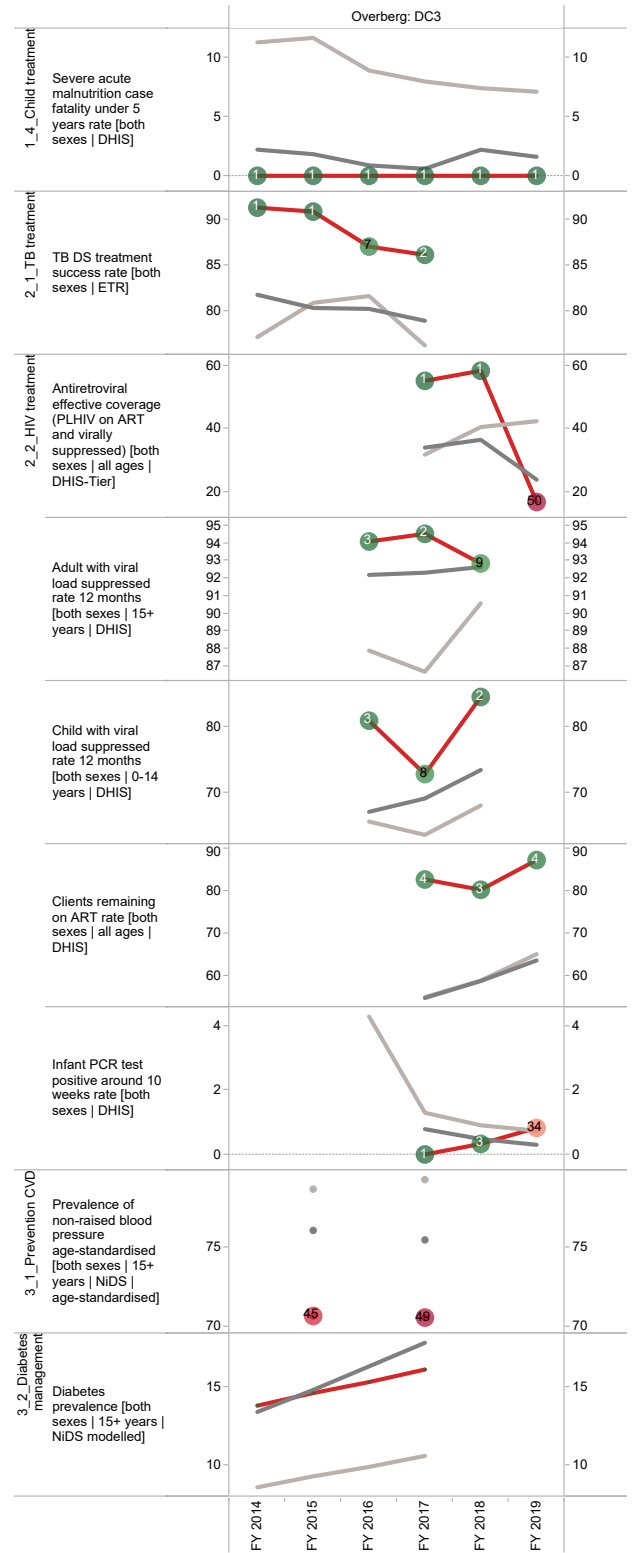
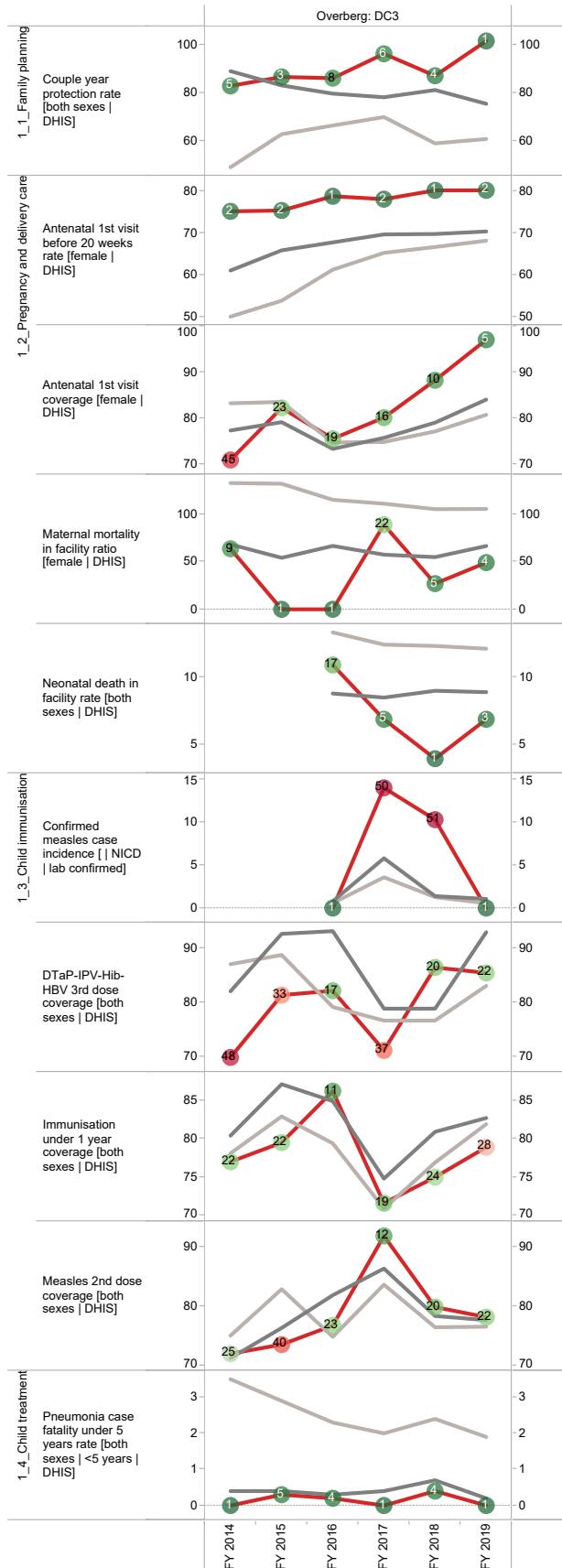
Source: Stats SA.



g The Local Government Handbook South Africa 2017. A complete guide to municipalities in South Africa. Seventh edition. Accessible at: [www.municipalities.co.za](http://www.municipalities.co.za).

h Mid-Year Population Estimates 2018, Stats SA.

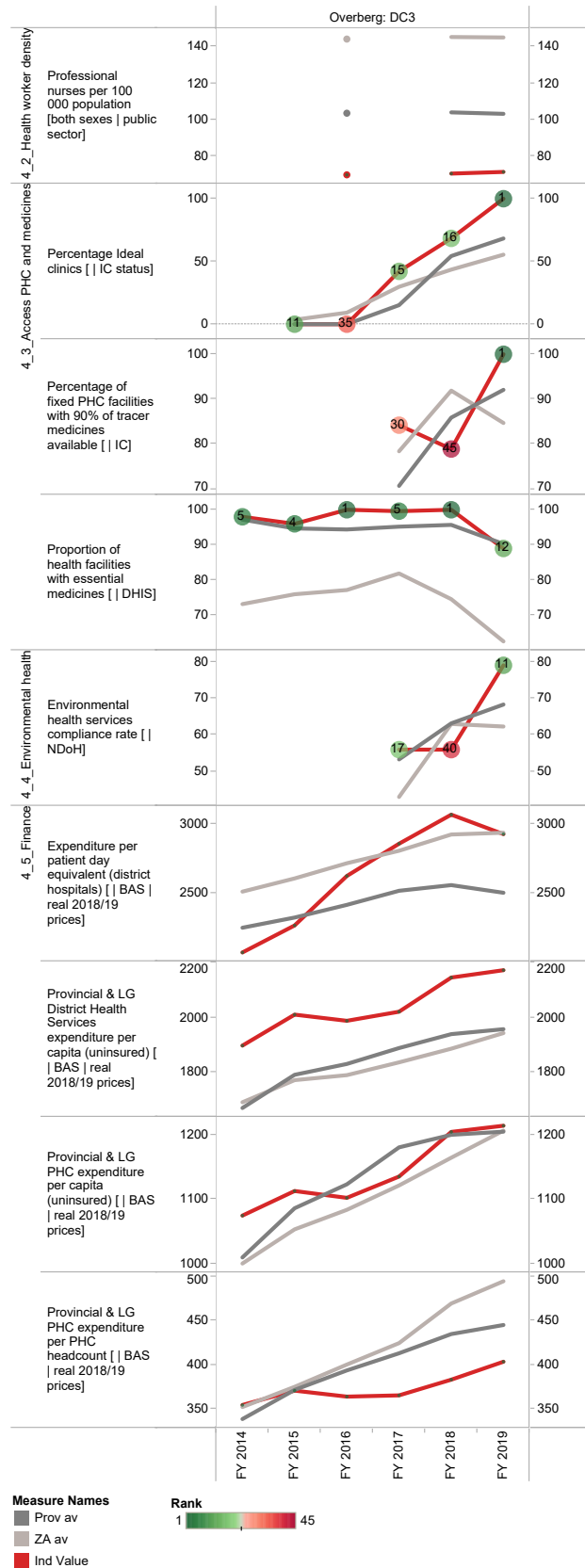
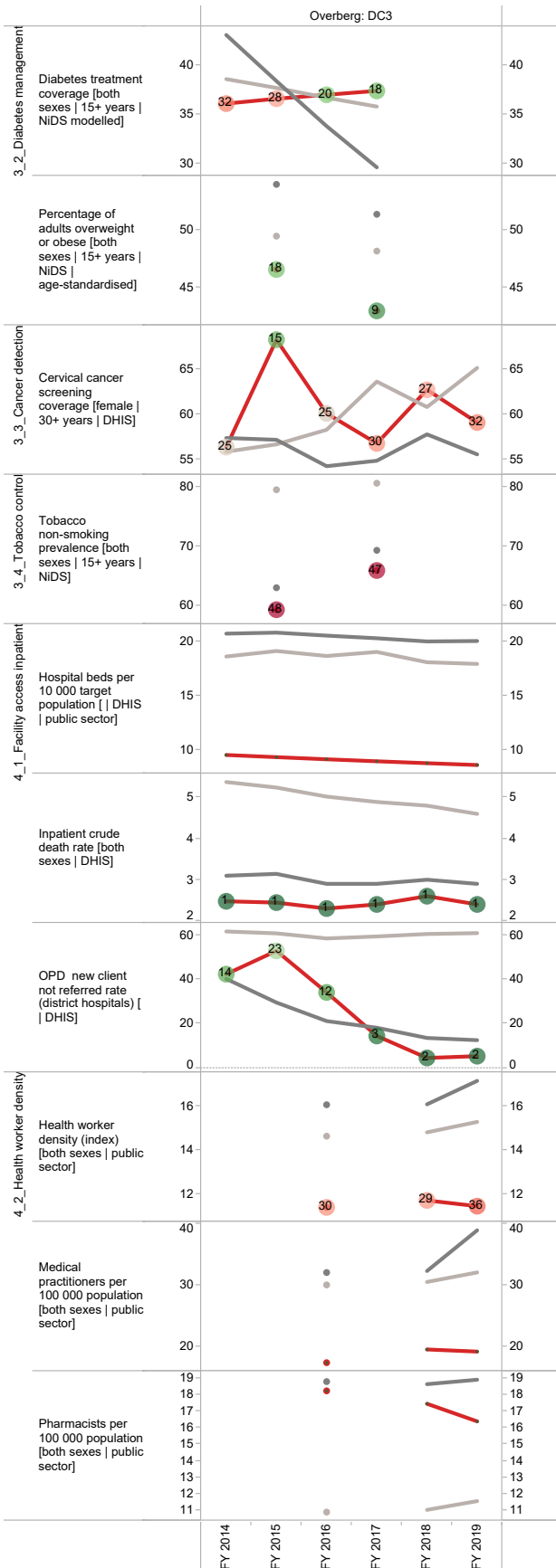
Annual trends, 2013/14 - 2018/19



Measure Names  
 ■ Prov av  
 ■ ZA av  
 ■ Ind Value



## Section B: Profile Western Cape Province



## Garden Route District Municipality (DC4)

The Garden Route District Municipality<sup>i</sup> (previously known as Eden District Municipality) is a Category C municipality situated in the Western Cape Province. The district comprises seven local municipalities: George, Mossel Bay, Knysna, Bitou, Oudtshoorn, Hessequa and Kannaland.

**Population (2018)<sup>j</sup>:** 628 623

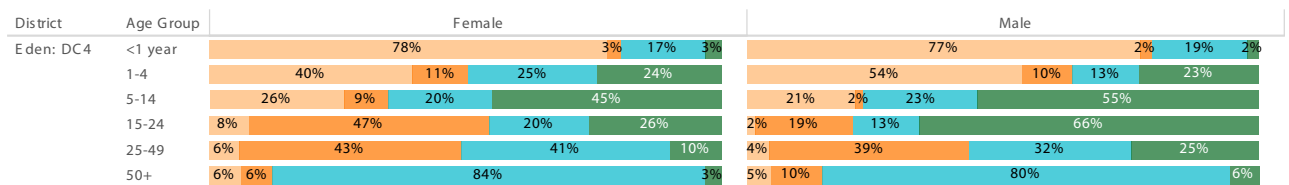
**Population density (2018):** 26.9 persons per km<sup>2</sup>

**Estimated medical scheme coverage (2018):** 16.5%

### Burden of disease profile

For the percentage of deaths by broad cause, deaths are classified into four groups, namely: (i) injuries; (ii) non-communicable diseases; (iii) HIV and TB; and (iv) communicable diseases together with maternal, perinatal and nutritional conditions. Data are given by gender and age group for the period 2013 - 2015.

### Percentage of deaths by broad cause, 2013 - 2015



Source: Stats SA.

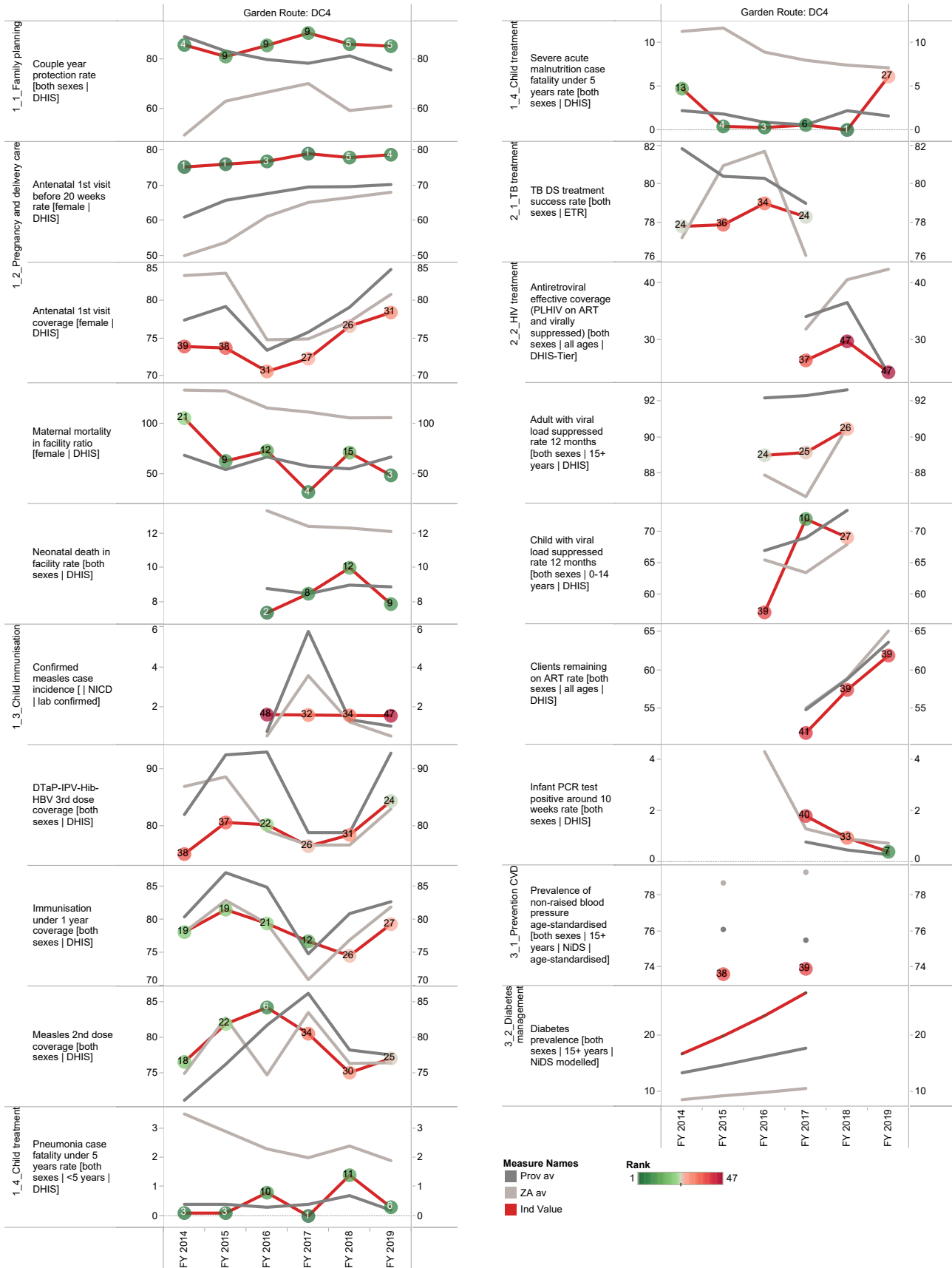
Broadcause  
■ Injury  
■ NCD  
■ HIV and TB  
■ Comm\_mat\_peri\_nut

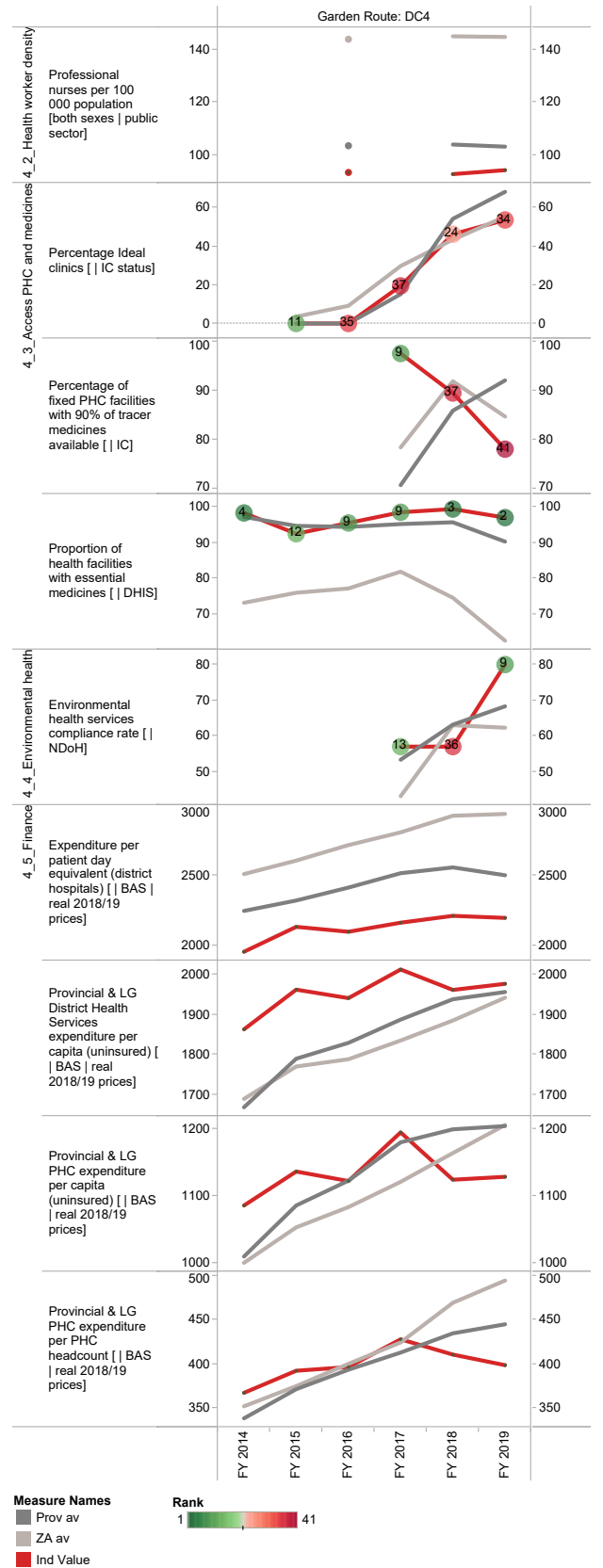
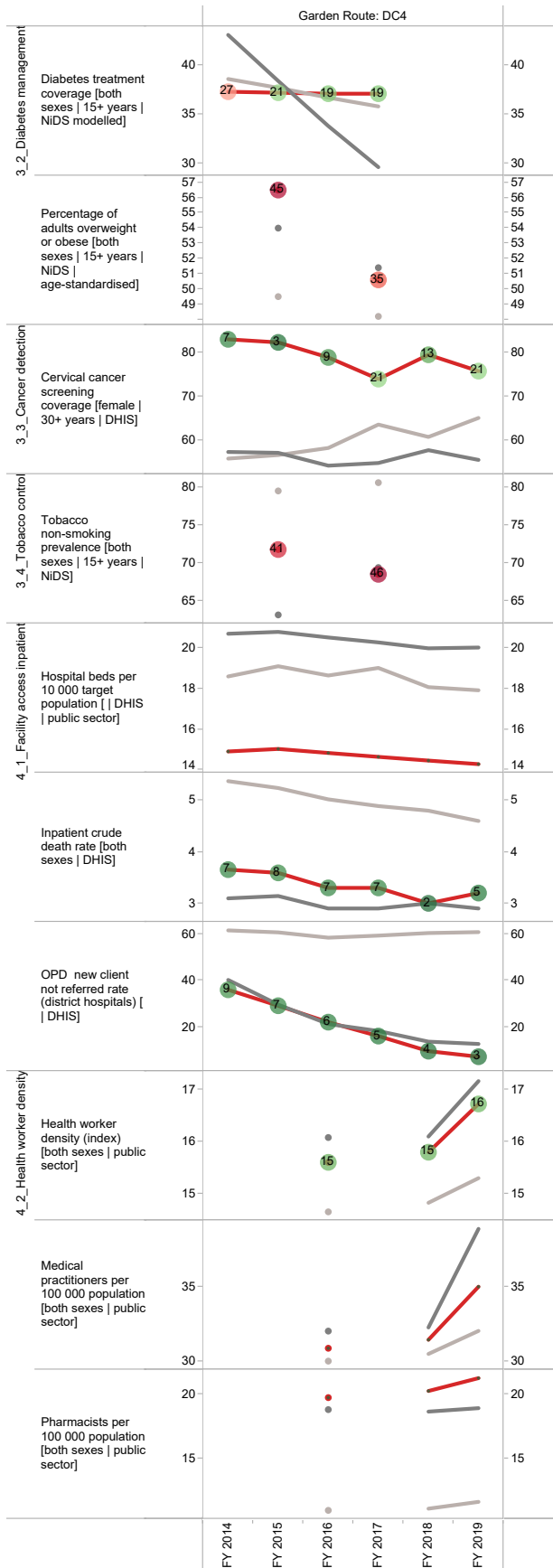
i The Local Government Handbook South Africa 2017. A complete guide to municipalities in South Africa. Seventh edition. Accessible at: [www.municipalities.co.za](http://www.municipalities.co.za).

j Mid-Year Population Estimates 2018, Stats SA.

## Section B: Profile Western Cape Province

### Annual trends, 2013/14 - 2018/19





## Central Karoo District Municipality (DC5)

The Central Karoo District Municipality<sup>k</sup> is a Category C municipality located in the Western Cape Province. It is comprised of three local municipalities: Laingsburg, Prince Albert and Beaufort West.

Population (2018)<sup>l</sup>: 76 821

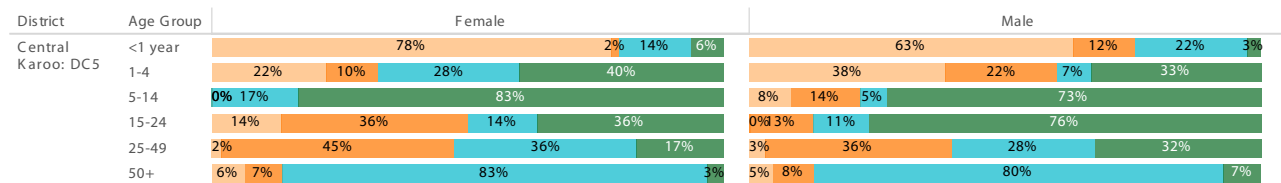
Population density (2018): 2.0 persons per km<sup>2</sup>

Estimated medical scheme coverage (2018): 12.5%

### Burden of disease profile

For the percentage of deaths by broad cause, deaths are classified into four groups, namely: (i) injuries; (ii) non-communicable diseases; (iii) HIV and TB; and (iv) communicable diseases together with maternal, perinatal and nutritional conditions. Data are given by gender and age group for the period 2013 - 2015.

### Percentage of deaths by broad cause, 2013 - 2015



Source: Stats SA.

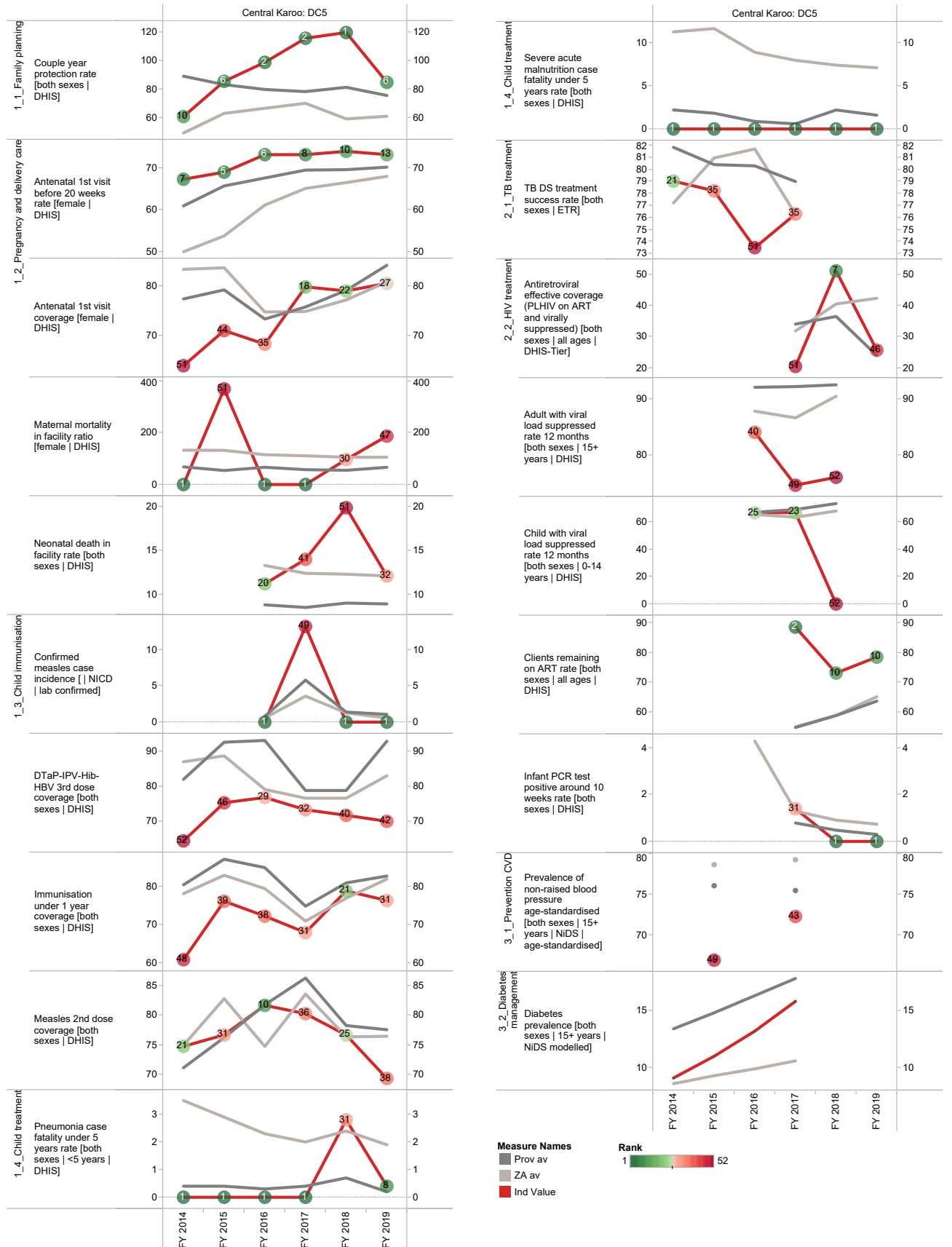


<sup>k</sup> The Local Government Handbook South Africa 2017. A complete guide to municipalities in South Africa. Seventh edition. Accessible at: [www.municipalities.co.za](http://www.municipalities.co.za).

<sup>l</sup> Mid-Year Population Estimates 2018, Stats SA.



Annual trends, 2013/14 - 2018/19



## Section B: Profile Western Cape Province

