

SOCIO-ECONOMIC & RISK FACTORS



71%

Of global population using safely managed drinking water source



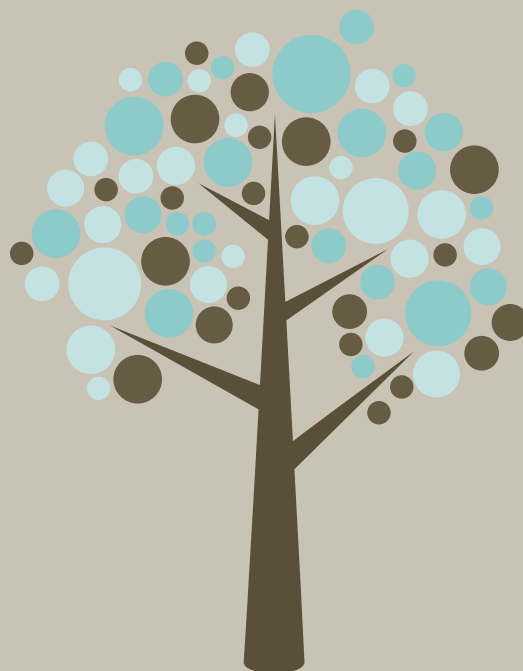
39%

Of global population had access to safely managed sanitation

23%
OF ALL DEATHS
GLOBALLY COULD BE
PREVENTED THROUGH
HEALTHIER
ENVIRONMENTS



NCDS
2/3 OF 12.6 MILLION
DEATHS CAUSED BY
ENVIRONMENT



7.6%
CONTRIBUTION OF
AMBIENT PM2.5
EXPOSURE TO
GLOBAL DEATHS



4.2 M
GLOBAL DEATHS
CAUSED BY AIR
POLLUTION

THE COUNTRY CONTINUES
TO FACE THE CHALLENGE
OF HIGH POVERTY, HIGH
INEQUALITY AND HIGH
UNEMPLOYMENT



56% of South Africans were living in poverty in 2015, which translates into 30.4 million people