



# Reproductive, maternal, newborn and child health indicators (RMNCH)

## UHC 1 COUPLE YEAR PROTECTION RATE (CYPR)

This is a sensitive proxy of the contraceptive prevalence rate and is collected using routine data.

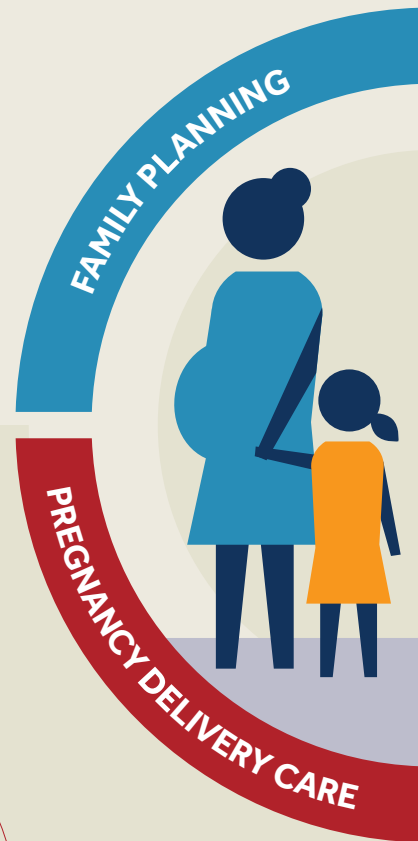
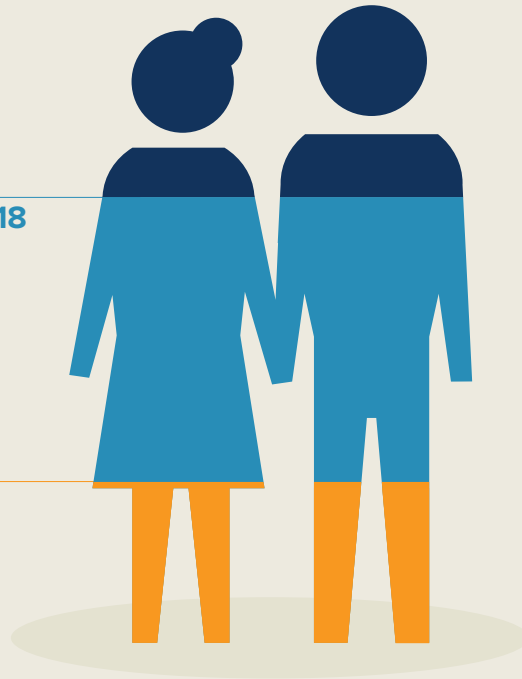
CALCULATING CYPR CONSIDERS SERVICE DELIVERY OF:

-  Oral contraceptive pills
-  Hormone injections
-  Intrauterine devices
-  Sub-dermal implants
-  Male and female condoms
-  Male and female sterilization

CYPR SHOWS GREATER CHANGE OVER TIME

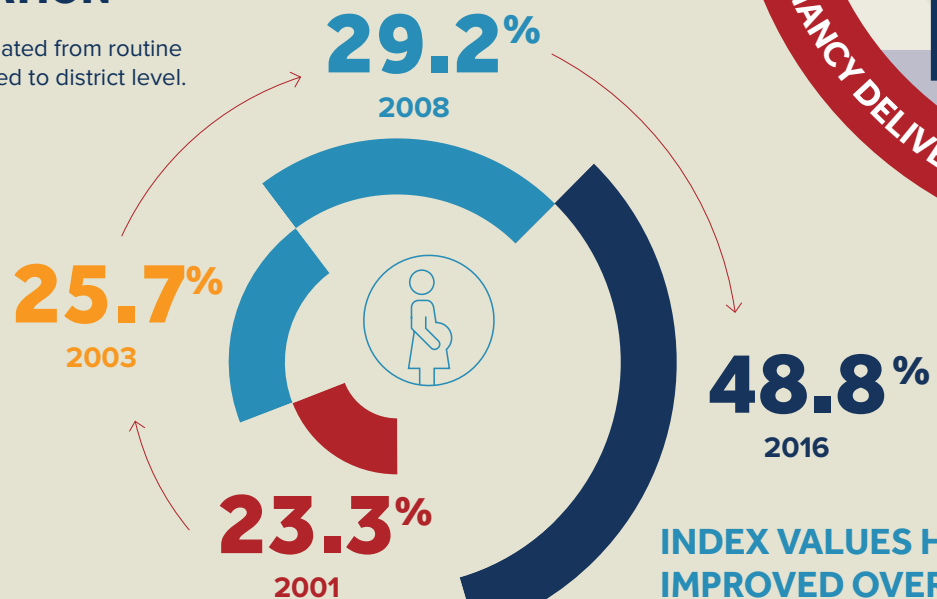
70.1% 2016-2018

25.3% 2000



## UHC 2 WOMEN WHO ATTEND ANC BEFORE 20 WEEKS' GESTATION

A measure of quality care calculated from routine data, which can be disaggregated to district level.



INDEX VALUES HAVE IMPROVED OVER TIME



ALTERNATIVE MEASURES OF SERVICE COVERAGE



Women who attend at least one antenatal visit.



Deliveries which occur in a health facility.



# Indicator insights

RMNCH indicators frequently measure service coverage and not effective service coverage (i.e. quality of care). In response to this, several other measures have been proposed that are adjusted for quality, user-adherence (i.e. if care is complying with standard treatment guidelines) or outcomes of coverage.

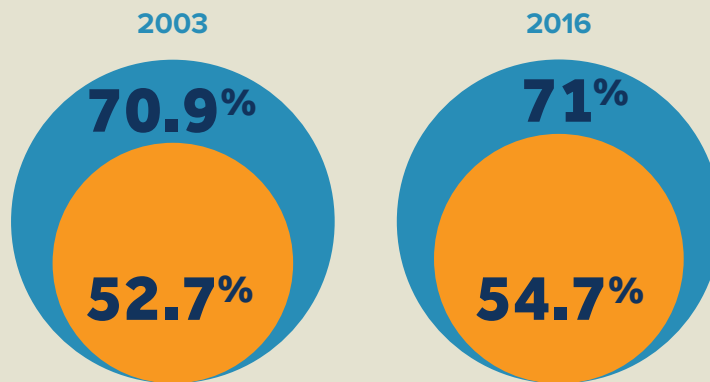
## UHC 3 COMPLETE IMMUNISATION UNDER 1 YEAR WITH THE EXPANDED PROGRAMME ON IMMUNISATION (EPI) REGIMEN

While this is only a measure of service coverage, it considers multiple antigens and avoids complications of new combination vaccines being introduced.



### ESTIMATES OF IMMUNISATION COVERAGE ARE HIGHER FROM ROUTINE DATA (DHIS) THAN SURVEY DATA (SADHS)

DHIS  
SADHS



COMPARISON OF IMMUNISATION COVERAGE

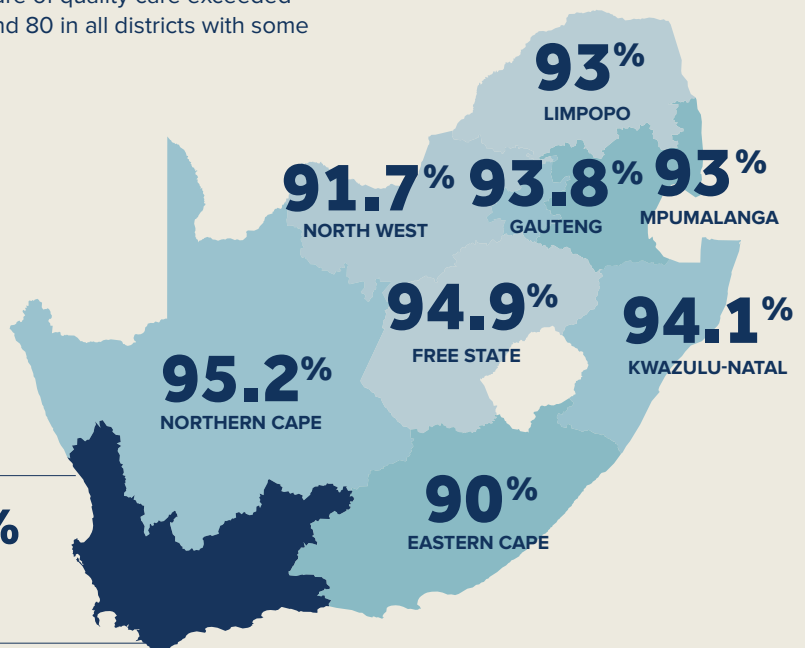
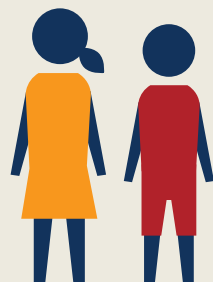


## UHC 4 PNEUMONIA CASE FATALITY RATE (CFR) IN CHILDREN UNDER 5 YEARS OF AGE (RESCALED)

In 2018/19, this measure of quality care exceeded 90 in all provinces, and 80 in all districts with some approaching 100.



PROGRESS OVER TIME IS EVIDENT AT THE NATIONAL LEVEL



The Western Cape in particular has shown substantial progress over time

98.8%  
WESTERN CAPE

Note: The rescaled value is the inverse of the CFR, calculated by applying the WHO guidance according to the formula: index = (max risk value – original value) / (max risk – min risk) x 100