

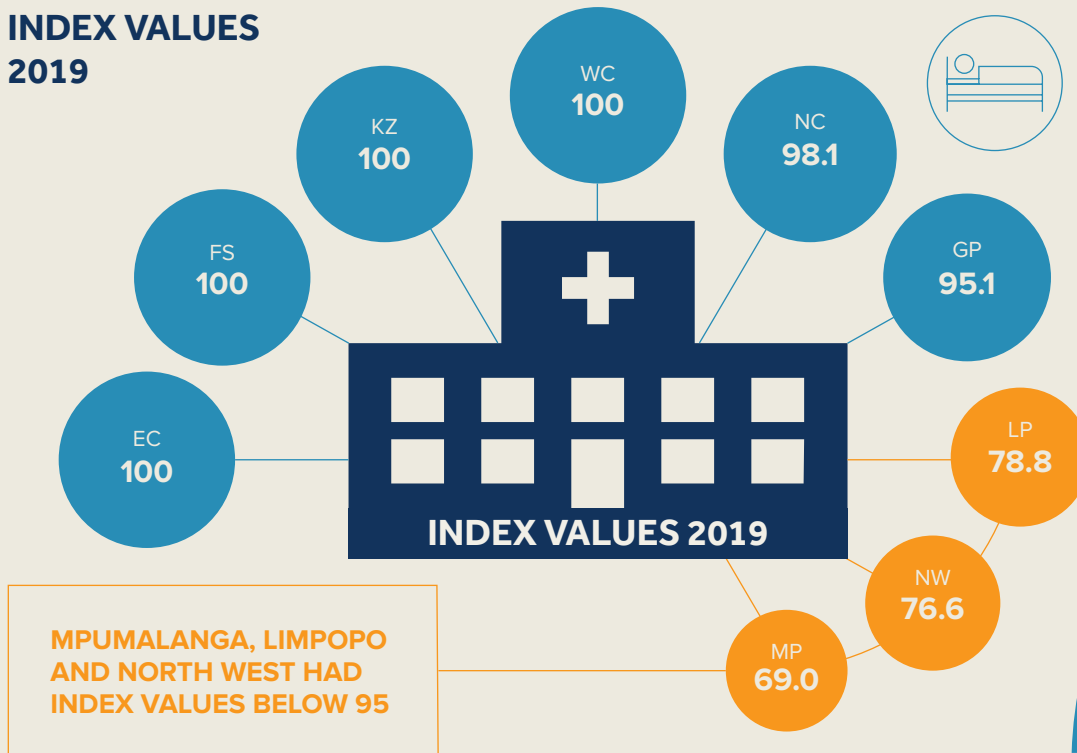


Service capacity and access

UHC 13 HOSPITAL BED DENSITY PER 10 000 UNINSURED POPULATION (RESCALED)

The index is calculated relative to a threshold value of 18 hospital beds per 10 000 population.

INDEX VALUES 2019



HOSPITAL BED DENSITY HAS REMAINED HIGH FROM 2003-2019



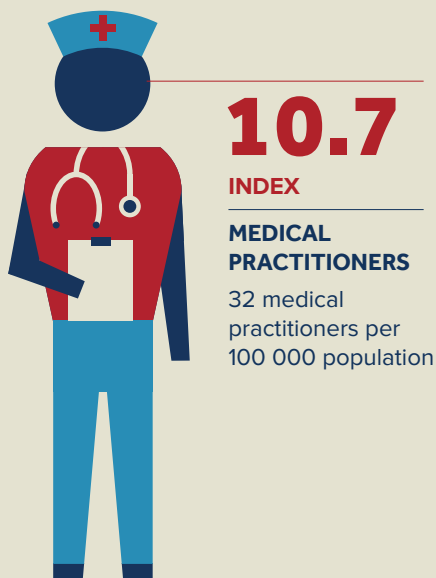
UHC 14 HEALTH WORKER DENSITY PER 100 000 (INDEX)

This index was calculated as the geometric mean of scaled scores for each cadre, with thresholds of 30 physicians, 100 nurses and midwives, and 5 pharmacists per 10 000 population.



THERE IS AN ABSOLUTE DEFICIT OF HEALTH WORKERS IN THE PUBLIC SECTOR

IN 2019, THERE WERE:





Indicator insights

Although hospital bed density remained high in most provinces over time, this is not an indication of the quality of care received in the public sector, but merely indicative of access.

There has been some improvement in health worker density in the country however there still a glaring deficit in the public sector.

UHC 15 PROPORTION OF HEALTH FACILITIES WITH ESSENTIAL MEDICINES

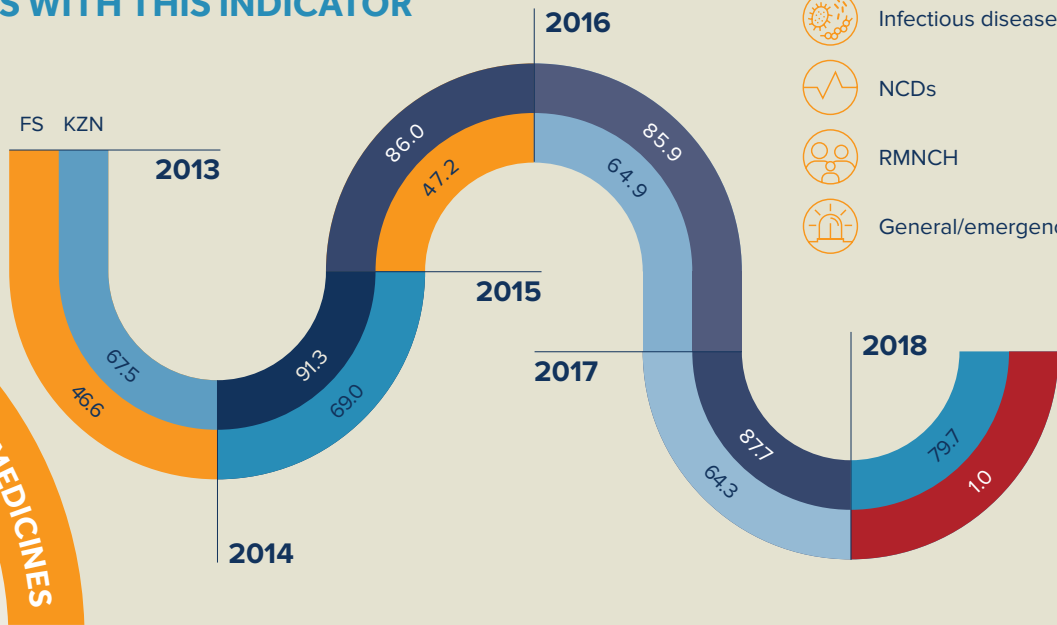
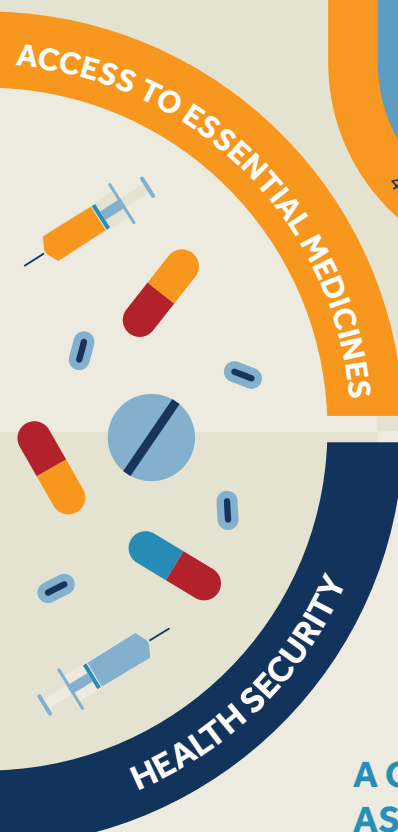
This measure is the inverse of the DHIS tracer stock-out indicator. Currently, there are insufficient data on the availability and access to essential medicines. Stock-outs remain prevalent across the country.



THERE ARE VARIOUS DATA QUALITY ISSUES WITH THIS INDICATOR

THE TRACER LIST INCLUDES:

- Infectious diseases
- NCDs
- RMNCH
- General/emergency care



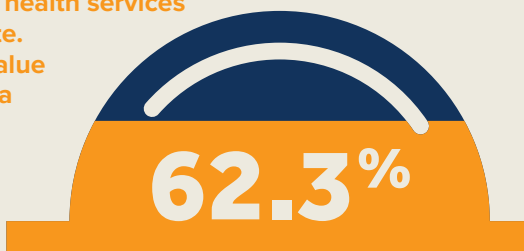
UHC 16 INTERNATIONAL HEALTH REGULATIONS CORE CAPACITY INDEX

This proxy measure is based on 13 core capacities for preparedness in dealing with health security events.

A CHECKLIST TO GUIDE ASSESSMENT WAS PUBLISHED IN 2013.

AN ALTERNATIVE MEASURE

for sub-national monitoring is the environmental health services compliance rate. The national value for South Africa in 2018 was:



ENVIRONMENTAL HEALTH SERVICES COMPLIANCE RATE

The NDoH tool assessed compliance of municipalities to the national norms and standards for rendering environmental health services which was developed and implemented in 2015/16.

